

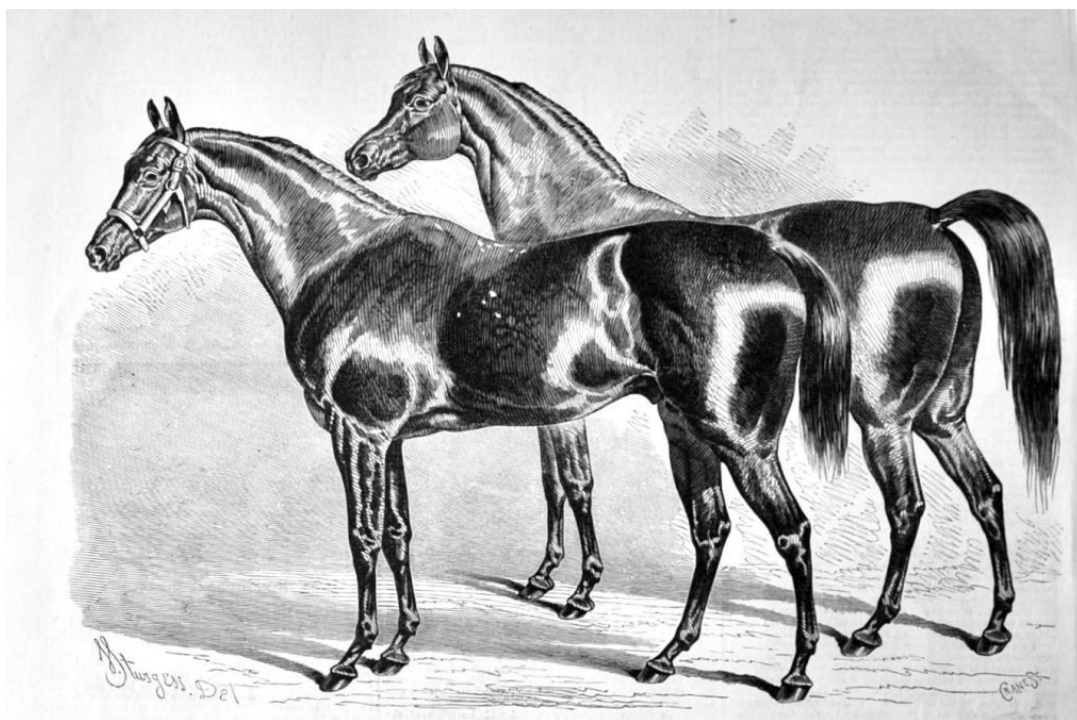


2025 FRASER COAST AGRICULTURE SHOW

Show Theme: Our Rich History

HORSE PROGRAM

Friday 23rd May 2025



GENERAL REGULATIONS

(For the conduct of competitions at QCAS affiliated Queensland Agricultural Shows)

Subject to the Rules, By-Laws and Regulations of the Queensland Chamber of Agricultural Associations Inc. and the Fraser Coast Agriculture Show Society Inc., the following General Regulations shall apply.

GENERAL REGULATIONS AND ACCEPTANCE OF ENTRIES

- 1 Judging will be performed by a Judge or panel of Judges appointed by the Fraser Coast Agriculture Show Society Inc.
- 2 The attention of Exhibitors is drawn to the fact that entries are accepted subject to the Rules, By-Laws and Regulations of the Queensland Chamber of Agricultural Societies Inc. and the Fraser Coast Agriculture Show Society Inc. in addition to the Special Regulations which appear in this schedule. Copies of the Rules and By-Laws may be obtained upon application to the Queensland Chamber of Agricultural Societies or the Fraser Coast Agriculture Show Society Inc.
- 3 No refunds will be made after close of entry.

NOTICE TO INTENDING EXHIBITORS

- 4 Entries for the upcoming Fraser Coast Agriculture Show can be made as described for each section in this schedule. Entries submitted other than on the correct form will be returned to the Exhibitor and, unless all requirements are complied with, and the forms returned to the Fraser Coast Agriculture Show office by completion of business on the closing date, as shown in this Schedule, they will not be considered.
- 5 Notwithstanding the provisions of General Regulation 6, late entries may be accepted at the discretion of the Section Chief Steward.
- 6 Entries are accepted subject to the Rules, By-Laws and Regulations of the Association, in addition to any Special Regulations, which appear in the Associations Schedule. All completed Entry Forms remain the property of the Fraser Coast Agriculture Show Society Inc. and are to be returned to the Fraser Coast Agriculture Show Society Inc. office after the Show for further office procedures as required.
- 7 Exhibitors whose entries have not been accepted shall be advised accordingly and entry fees refunded.
- 8 The exhibitor irrevocably consents to the Association publishing or reproducing in any manner whatsoever any particulars or information in relation to their exhibits; the publication or reproduction may be in a printed form or visual image through electronic means and/or on the internet.

PRIVACY STATEMENT

- 9 The information provided by Exhibitors is used by the Queensland Chamber of Agricultural Associations Inc. and the Fraser Coast Agriculture Show Society Inc. to organise, process and conduct competitions at the Fraser Coast Agriculture Show. By entering such competitions you consent to your personal information being used for this purpose including this information being made available to sponsors, breed Associations, the media, the public, promotional purposes, archival purposes, published in publications and could be made available to other third parties for the purpose of promoting the Queensland Agricultural Show Movement, or as otherwise required by law. Exhibitors have a right of access to and alteration of personal information concerning themselves in terms of the Privacy Act. This may be done by contacting the QCAS Chief Executive Officer or by writing to the Queensland Chamber of Agricultural Societies Inc.

WORKPLACE HEALTH AND SAFETY

- 10 All Queensland Chamber of Agricultural Societies Inc. affiliated Associations Showground's are designated workplaces within the meaning of the Workplace Health and Safety Act 2011 and exhibitors / competitors are required to ensure that they and all persons under their direction or control, including their contractors or subcontractors, comply with all requirements of the Act. The Queensland Chamber of Agricultural Associations Inc. holds each exhibitor responsible to discharge its obligations to provide and maintain a safe place and system of work during occupation by the exhibitor/competitor of any area of the affiliated Agricultural Associations Showground's.
- 11 Each exhibitor/competitor will assess the risk to themselves, staff, volunteers, family, other exhibitors, Agricultural Society staff, show visitors, children and any person foreseeably affected by the presentation of their exhibit.
- 12 Risks identified by exhibitors/competitors will be eliminated or controlled by the exhibitor/competitor and particular attention will be paid to ensuring public safety and safety of other exhibitors/competitors.
- 13 Exhibits will only be held and handled by competent persons whose experience is known to the Exhibitor/Competitor.
- 14 A "No Smoking Policy" will be strictly adhered to by exhibitors/competitors. Smoking areas are marked in "ORANGE MARKINGS/FLAGS" which are located near the Cane & Cattleman's Bar & Witches Hat Bar. No food or drink is allowed in the smoking area. The exhibitors/competitors are advised that the use of Primus stoves, any heating or lighting appliances of a like character, or any naked light, is strictly prohibited in pavilions.
- 15 Any exhibitors/competitors intending to bring electrical equipment to the Showground's will be required to ensure that such equipment is fitted with residual current protection and that all electrical leads, tools and appliances have been inspected by a licensed electrical contractor and currently tagged. The use of double adaptors is prohibited and all power boards must also be tested and tagged.
- 16 All exhibitors/competitors will comply with the requirements of the Act and its Regulations and Standards in every other respect. This is essential for the safety of all exhibitors/competitors and the general public. The Act imposes very severe penalties in the event of noncompliance with its provisions. Any exhibitors/competitors who do not comply will not be allowed to exhibit at Queensland Chamber of Agricultural Associations Inc. affiliated Shows.

DISCLAIMER

- 17 The information contained in the Competitions Schedule is gathered for the purpose of providing information to Exhibitors and show patrons. The information is a compilation of information provided by third parties and the Queensland Chamber of Agricultural Associations Inc. and affiliated Agricultural Associations does not warrant its accuracy and advises that any such information may be subject to change or amendment occurring at any time and thereby making the information incorrect. Subject to the Queensland Chamber of Agricultural Associations Inc. legal obligations and responsibilities, if you require confirmation of any information please contact the QCAS Office.

PRIZES AND GST

- 18 The Australian Taxation Office has deemed that GST is payable on prizes if an Exhibitor is registered for GST and enters an Exhibit as part of a business enterprise.
- 19 The information an Exhibitor provides on the Application for Entry determines whether GST is applicable.
- 20 Any prize stated in this Schedule does not include GST.
- 21 GST will not apply:
 - (a) If an Exhibitor enters an Exhibit as a hobby or private recreational pursuit; or
 - (b) If an Exhibitor enters an Exhibit as part of a business enterprise, the Exhibitor has an ABN, but the Exhibitor is NOT REGISTERED for GST.
 - (c) If an Exhibitor enters an Exhibit as part of a business enterprise, the Exhibitor is not entitled to an ABN as the business or enterprise is not operating in Australia.
- 22 GST will apply if an Exhibitor enters an Exhibit as part of a business enterprise, the Exhibitor has an ABN, and the Exhibitor is REGISTERED for GST.
- 23 Where GST applies, the Association will pay the prize money quoted in this Schedule plus 10% GST. The Association will issue a recipient created tax invoice.
WARNING: The Exhibitor must complete the Exhibitor's Declaration on the Application for Entry. The Queensland Chamber of Agricultural Associations Inc. recommends that the Exhibitor seeks professional advice before completing the Exhibitor Declaration.

THANK YOU TO OUR 2025 SPONSORS:

Fraser Coast Rural Supplies

Carratum Park

JUDGES

Mieke Bigg

Gail Iskra

IMPORTANT

Program/Classes are subject to change. The organisers reserve the right to alter/amend/delete classes/events if deemed necessary on the day without consultation. Gate Entry fees can be prepaid. Camping/Stables/Yards **must** be prebooked online. Please print your confirmation and present at the Horse Gate to collect your Gate Entry, Camping Pass and Stable allocations. Ring nominations will be accepted on the day via Eftpos only (no cash) Entries on Nominate.

All horse competitors to enter through the Horse Gate

Centre Ring Chief Steward:	Lyndal Roos	0408839824
Livestock Chief Steward	Tracey Hillier	0409063015
Stable and Camping Queries	Tracey Hillier and Lyndal Roos	
Show Horse Steward (Indoor)	Cindy White	

PLEASE NOTE:

A printed **BIOSECURITY ANIMAL HEALTH DECLARATION/MOVEMENT RECORD AND A HORSE EVENT PARTICIPATION WAIVER, RELEASE AND ACKNOWLEDGEMENT FORM** **Must** be handed to ticket stewards prior to purchasing entry tickets at Indoor Arena otherwise **entry may be refused to the competition. These forms are available on the website or can be emailed to you.**

MEDIA CONSENT

I understand it is a condition of my entry that I hereby authorise the Fraser Coast Agriculture Show Society Inc or its representatives, the irrevocable right to use my name, likeness, image, voice, property and/or any performances as captured by photo/video means for release and/or reproduction in any medium for any legal purpose. I acknowledge that I have no interest, ownership or copyright in the use of my name, likeness, image, voice, property and/or any performances and that any use made without compensation or notice to me, I waive any right to inspect or approve and/or otherwise control the use of same in any kind of marketing and media worldwide including online, now or in the future.

SECTION CONDITIONS:

(These conditions to be read in conjunction with the QCAS Special & General Horse Regulations.) A Horse Participant Waiver, Release and Acknowledgement Form and a Biosecurity Animal Health Declaration /Movement Record is available on the website. These MUST BE PRINTED AND FILLED OUT COMPLETELY AND HANDED IN AT THE TICKET ENTRY BOOTH FOR SHOWHORSE AT THE INDOOR. **If all these forms are not received together, no participation in events can be allowed.** Entries available online at NOMINATE up until 23rd May. Tickets will also be available for purchase on the day at the **Office at the Indoor Arena. All ticket purchases to be by EFTPOS/Card – NO CASH TAKEN ON THE DAY.** Tickets **must** be handed to the Steward prior to the event commencing. **Clearly print showing rider's name and horse's name.** This information is vital to the accuracy of publication by the ring announcer.

1. **Stables:** Stables Must be **pre-booked online** at **NOMINATE**. The stable fees/rates are \$5 per night per stable/yard. Bond \$40 per stable, 5 horses or more Bond \$20 per stable. Stables will be available from **Monday 19th May to Sunday 25th May**. Open yards will be available to Showjumping horses which carry the same fee and Bond as the Stables. Booking confirmation **MUST** be brought to the Horse Gate before entering Stables.
2. **Camping** must be **pre-booked online** at **NOMINATE**: Camping sites are available for the duration of the Show period. Camping is \$11 per night per site. Sites can be prebooked online and confirmation presented at Horse Gate to receive your Camping Pass.
3. **Gate Entry Passes: To be paid when Nominating.**
4. **Horse Entry Tickets** – prenominate on NOMINATE.COM.AU up to the 22nd May, 2024 at 12pm. Any prenominated entries that are cancelled will be refunded in full via nominate. Entries will also be available on the day via Eftpos. No Cash taken on the day!
5. **Prize Money** to be issued via Bank transfer at the conclusion of the Show. No prize money will be given out on the day.
6. ALL RIDERS MUST WEAR APPROVED SAFETY HELMETS AS107 IN ALL EVENTS.
7. **District Events are open to horses and riders who are residents in the cities of Maryborough, Hervey Bay and the Shire of the Fraser Coast Regional Council and have been so for a minimum of three (3) months.**
8. Random Drug Testing may be conducted.
9. The age of the horse shall be calculated from the first day of August. Every horse foaled before August in any year shall be deemed to be one (1) year old on that date.
10. No ring shall be required to wait for a competitor who may be competing in another ring.
11. If in the opinion of the Judge any horse or pony has been entered in the wrong class; the Judge shall have the authority/power to classify the horse/pony in the correct class.
12. A Maiden is a horse who has not won a first (1st) prize in a similar event at an affiliated show.
13. A Novice horse is one that has not won an Open Championship at any Agricultural Show.
14. Stallions are not permitted in hack classes, except in classes as listed (Breed Classes only). No persons under the age of 18 years are to handle stallions on the grounds or in the show ring.
15. Pony Hack must not exceed 14hh.
16. Pony Hack classes ne 12.2hh for riders under 17 years, 12.2hh and above can be ridden by anyone.
17. A Galloway Hack shall be 14hh not to exceeding 15hh.
18. Measuring available from Thursday morning. Prebook and organise with Gail Iskra. Forms on Equestrian Qld Show Horse Site.
19. Horses entered in Hunter classes are not eligible for Show Horse classes.
20. Horses entered in Show Horse Classes are not eligible for Hunter classes.
21. All horses must have a current height certificate acceptable to the Fraser Coast Agriculture Show Society.
22. A Judge or Steward may exclude any person or horse from competition for bad behaviour or conduct.
23. The Steward rather than the Judge shall sign performance cards during the continuance of the Show.
24. Correct attire including approved helmets and riding boots must be worn for all events.
25. All electrical leads are required to be tagged and tested before coming onto the showground's indicating testing with-in the previous 12 months.
26. Entrants attention is drawn to the QCAS SPECIAL HORSE REGULATIONS and the BIOSECURITY FOR FRASER AG SHOW INFORMATION LEAFLET.
27. It is not expected that competitors attend the Grand Parade unless the competitor wishes to.
28. Where there is only one competitor in any class the prize money will be the second place prize money.

RING ONE INDOOR ARENA – FRIDAY 23 MAY 2025

Morning Program – Start 9.00am

ENTRY FEE \$5.00 Prize Money: \$15, \$10, \$5
Champion / Reserve Champion \$15, \$10

LED SHOW HORSE

CLASS	DETAILS
1001	Led Show Horse Youngstock Colt/Filly/Gelding (pony/galloway/hack)
1002	Led Pony Show Horse
1003	Led Galloway Show Horse
1004	Led Hack Show Horse

CHAMPION/RESERVE CHAMPION

JUNIOR RIDER CLASS

CLASS	DETAILS
1005	Beginner Rider 17yrs and under (walk and trot only, May be on lead)
1006	Maiden Rider 17yrs and under
1007	Novice Rider 17yrs and under
1008	Open Rider 17yrs and under

CHAMPION/RESERVE CHAMPION

SUPREME CHAMPION RIDER

RING ONE INDOOR ARENA (continued) – FRIDAY 23 MAY 2025

Morning Program – Start 9.00am

ENTRY FEE \$5.00 Prize Money: \$15, \$10, \$5

Champion / Reserve Champion \$15, \$10

BEGINNER SHOW HORSE

(Horses competing in Hack classes are not eligible for Hunter classes)

CLASS	DETAILS
1009	Beginner Show Horse (pony/Galloway/hack) (Walk and trot only. Rider can be led)

SHOW HORSE HACK

(Horses competing in Hack classes are not eligible for Hunter classes)

CLASS	DETAILS
1010	Maiden Show Horse (Pony/Galloway/Hack)
1011	Novice Show Horse
1012	Open Show Horse Hack Mare
1013	Open Show Horse Hack Gelding/Stallion
1014	Open Small Show Horse Hack
1015	Open Large Show Horse Hack
1016	Best Educated Show Horse Hack

CHAMPION/RESERVE CHAMPION

PONY SHOW HORSE

(Horses competing in Hack classes are not eligible for Hunter classes)

CLASS	DETAILS
1017	Maiden Pony Show Horse
1018	Novice Pony Show Horse
1019	Open Pony Show Horse Mare
1020	Open Pony Show Horse Gelding/Stallion
1021	Open Small Pony Show Horse
1022	Open Large Pony Show Horse
1023	Best Educated Show Pony

CHAMPION/RESERVE CHAMPION

GALLOWAY SHOW HORSE

(Horses competing in Hack classes are not eligible for Hunter classes)

CLASS	DETAILS
1024	Maiden Galloway Show Horse
1025	Novice Galloway Show Horse
1026	Open Galloway Show Horse Mare
1027	Open Galloway Show Horse Gelding/Stallion
1028	Open Small Galloway Show Horse
1029	Open Large Galloway Show Horse

CHAMPION/RESERVE CHAMPION

FRASER COAST AG SHOW SUPREME CHAMPION RIDDEN SHOW HORSE OF THE SHOW SPONSORED BY FRASER COAST RURAL SUPPLIES

(All Champions from Rings 1 eligible for Supreme)

To be judged after all ridden classes.

\$100, Sash & Trophy Rug

RING 2 INDOOR ARENA – FRIDAY 23 May 2025

Morning Program – Start 9am

ENTRY FEE \$5.00Prize Money \$15, \$10, \$5
Champion / Reserve Champion \$15, \$10

LED HUNTER CLASSES

CLASS	DETAILS
1030	Led Hunter Youngstock Colt/Filly/Gelding (pony/galloway/hack)
1031	Led Pony Hunter
1032	Led Galloway Hunter
1033	Led Hack Hunter

CHAMPION/RESERVE CHAMPION

SENIOR RIDER CLASSES

CLASS	DETAILS
1034	Beginner Rider 18yrs and over (Walk and trot only)
1035	Maiden Rider 18yrs and over
1036	Novice Rider 18yrs and over
1037	Novice Rider 18yrs – 40yrs
1038	Novice Rider 40yrs and over
1039	Open Rider 18-40yrs
1040	Open Rider 40yrs and over

CHAMPION/RESERVE CHAMPION

RING 2 INDOOR ARENA (continued) – FRIDAY 23 May 2025

Morning Program – Start 9am

ENTRY FEE \$5.00Prize Money \$15, \$10, \$5
Champion / Reserve Champion \$15, \$10

BEGINNER HUNTER HACK

CLASS	DETAILS
1041	Beginner Hunter (pony/Galloway/Hack) (Walk Trot Only. Rider Can be led)

CHAMPION/RESERVE CHAMPION

HUNTER HACK

(Hand Gallop in Hunter Class)

Horses competing in Hunter Classes are not eligible for Hack classes and must abide by Show Hunter rulings on correct saddlery and dress codes – Tweed jackets and plain browbands etc. horses will be required to gallop in their workouts.

CLASS	DETAILS
1042	Maiden Hunter Hack
1043	Novice Hunter Hack
1044	Open Hunter Hack Mare
1045	Open Hunter Hack Gelding/Stallion
1046	Open Small Hunter Hack
1047	Open Large Hunter Hack

CHAMPION/RESERVE CHAMPION

PONY HUNTER CLASSES

(Hand Gallop in Hunter Class)

Horses competing in Hunter Classes are not eligible for Hack classes and must abide by Show Hunter rulings on correct saddlery and dress codes – Tweed jackets and plain browbands etc. horses will be required to gallop in their workouts.

CLASS	DETAILS
1048	Maiden Pony Hunter
1049	Novice Pony Hunter
1050	Open Pony Hunter Mare
1051	Open Pony Hunter Gelding/Stallion
1052	Open Small Pony Hunter
1053	Open Large Pony Hunter

CHAMPION/RESERVE CHAMPION

GALLOWAY HUNTER CLASSES

(Hand Gallop in Hunter Class)

Horses competing in Hunter Classes are not eligible for Hack classes and must abide by Show Hunter rulings on correct saddlery and dress codes – Tweed jackets and plain browbands etc. horses will be required to gallop in their workouts.

CLASS	DETAILS
1054	Maiden Galloway Hunter
1055	Novice Galloway Hunter
1056	Open Galloway Hunter Mare
1057	Open Galloway Hunter gelding/Stallion
1058	Open Small Galloway Hunter
1059	Open Large Galloway Hunter

CHAMPION/RESERVE CHAMPION

FRASER COAST AG SHOW SUPREME CHAMPION RIDDEN HUNTER HORSE OF THE SHOW SPONSORED BY CARRATUM PARK

(All Champions eligible for Supreme)

To be judged after all ridden classes.

\$100, Sash & Trophy Rug

RING 1 INDOOR ARENA – FRIDAY 23 May 2025

Afternoon Program – Starts after completion of Show Horse/Hunter Program but not before 1pm

ENTRY FEE \$5.00Prize Money \$15, \$10, \$5

Champion / Reserve Champion \$15, \$10

RDA LED CLASSES

(Horses presented in RDA classes may be presented by multiple riders/handlers)

CLASS	DETAILS
1060	Disability Led Handlers 12 & Under
1061	Disability Led Handlers 12 & Over

CHAMPION/RESERVE CHAMPION

RDA RIDDEN CLASS

(Horses presented in RDA classes may be presented by multiple riders/handlers)

CLASS	DETAILS
1063	Disability Rider Class 12yrs & Under
1064	Disability Rider Class 13 yrs & Over

CHAMPION/RESERVE CHAMPION