



2025 FRASER COAST AGRICULTURE SHOW

Show Theme: *Our Rich History*

150years: 1875 – 2025

SECTION 13:

CHAINSaws

Thursday 22 May 2025 at 2PM

Section Sponsors:

**Fraser Coast Chainsaws & Mowers -
Maryborough**

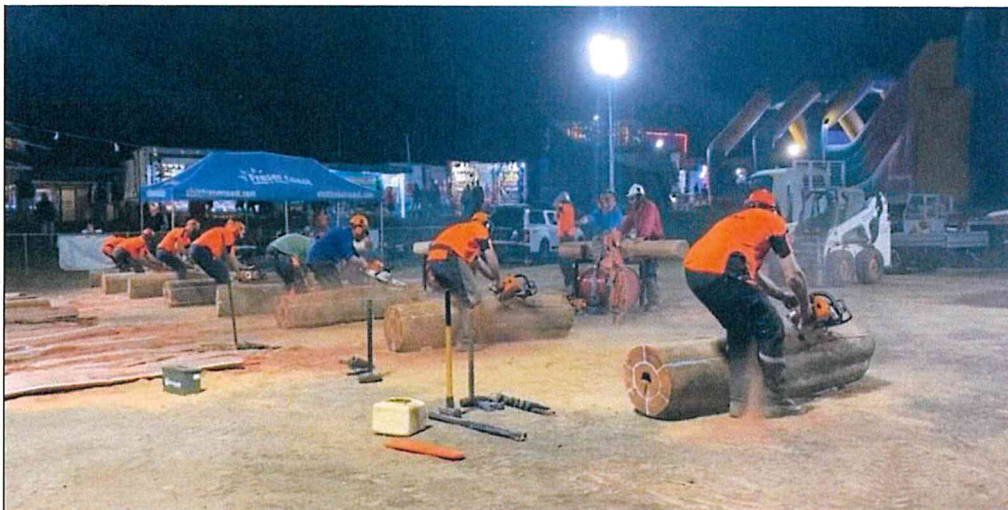
**Stutz Sawmill, Logging &
Haulage – Maryborough**

Fraser Coast Rural Supplies - Maryborough

Handy Hire - Maryborough/Hervey Bay

Ian Rook – Tiaro

Karen Hansen – Maryborough



**Queensland
Government**
Department of Infrastructure,
Local Government
and Planning

GENERAL REGULATIONS

(For the conduct of competitions at Queensland Ag Shows affiliated Queensland Agricultural Shows)

Subject to the Rules, By-Laws and Regulations of the Queensland Chamber of Agriculture Society's Inc. (Queensland Ag Shows) and the society relevant to this schedule (Fraser Coast Agriculture Show Society Inc.), the following regulations shall apply. Where there is a conflict between these regulations and the regulations and the rules of the local Agricultural Society, (Fraser Coast Agriculture Show Society Inc.), the rules of the Affiliated Agricultural Society prevail.

GENERAL REGULATIONS AND ACCEPTANCE OF ENTRIES

1. The attention of Exhibitors is drawn to the fact that entries are accepted subject to the Rules, By-Laws and Regulations of the Queensland Ag Shows and the Fraser Coast Agriculture Show Society Inc. in addition to any Special Regulations which appear in this schedule. Copies of the Rules and By-Laws may be obtained the Queensland Ag Shows website www.queenslandshows.com.au/competitions or the show society relevant to this schedule (Fraser Coast Agriculture Show Society Inc.)
2. These By-Laws and Regulations, together with Special Regulations and notes as set forth in the respective sections of the Competition Schedules or Catalogues, are to be the conditions of competition. In these By-Laws, the Regulations, the Special Regulations and notes the words "entry form" shall, unless the context otherwise indicates or requires mean the form supplied by the Show to persons desiring to apply to enter an Exhibit in any of the Show's competitions or to compete in any event which those persons are required to complete and lodge with the Show in order to apply to do so.
3. Subject to this by-Law and to any Regulation, Special Regulation or condition of Entry in any section or class (a) An Exhibit must be the bona fide property of the person who enters the Exhibit or class.
4. In any class in which entries are accepted from a club or other groups of Owners, the name of the club or particulars sufficient to identify the group shall be stated on the Entry Form together with a statement of the name and address of a person who is authorised to act on behalf of the club or group in relations to all matters relating to the entry. The Show shall be entitled to deal with the person so authorised as if he were the sole Owner of the Exhibit and delivery or payment to that person or the club or group by whom such person is authorised to act of any trophy prize or moneys won by or payable in respect of the Exhibit shall be a complete discharge to the Show.
5. Entries entered in the wrong class by the Exhibitor/Competitor may be transferred to the proper class by the Chief Stewards.
6. In the case of insufficient numbers being nominated or shown in any class, the society retains the right suspend classes at any time. The section Chief Steward retains the right to reduce prize money where classes are not sufficiently patronised.
7. **The Fraser Coast Agriculture Show Society Inc. is operating under the Queensland Ag Shows and the Maryborough Showgrounds & Equestrian Park covid safe plan. You must adhere to COVID safe key principles that apply to Maryborough Showgrounds & Equestrian Park and the Fraser Coast Agriculture Show Society Inc.**

JUDGING

8. Judging will be performed by a Judge or panel of Judges appointed by the Fraser Coast Agriculture Show Society Inc.
9. In all affiliated Agricultural Show Sections, Judges should not judge the same section within a two (2) year period of the same show.
10. An exhibitor shall not compete in a section if the Exhibitor is a member of the Judge's immediate family.
11. Any person causing a nuisance by loud comments, or the decision of the judge or otherwise unseemly behaviour will, after being cautioned, be expelled from the judging area and in the case of exhibitors, be liable for disqualification.
12. All Judges and Stewards who accept engagements with Queensland Ag Shows and Show Societies must follow the rules set in the Code of Practice and Conduct – Show Judges and Stewards document obtained from the Qld Ag Shows website www.queenslandshows.com.au/competitions or the show society relevant to this schedule (Fraser Coast Agriculture Show Society Inc.)

NOTICE TO INTENDING EXHIBITORS

13. Entries for the upcoming Fraser Coast Agriculture Show can be made as described for each section in this schedule. Entries submitted other than on the correct form or online will be returned to the Exhibitor and, unless all requirements are complied with, and the forms returned to the Fraser Coast Agriculture Show office by completion of business on the closing date, as shown in this Schedule, they will not be considered.
14. Notwithstanding the provisions of General Regulation 6, late entries may be accepted at the discretion of the Section Chief Steward.
15. Entries are accepted subject to the Rules, By-Laws and Regulations of the Society, in addition to any Special Regulations, which appear in the Schedule. All completed Entry Forms remain the property of the Fraser Coast Agriculture Show Society Inc. and are to be returned to the Fraser Coast Agriculture Show Society Inc. office after the Show for further office procedures as required.
16. Exhibitors whose entries have not been accepted shall be advised accordingly and entry fees refunded.
17. The Exhibitor must complete the Exhibitor's Declaration on the Application for Entry. Queensland Ag Shows recommends that the Exhibitor seeks professional advice before completing the Exhibitor Declaration.
18. The exhibitor irrevocably consents to the Society publishing or reproducing in any manner whatsoever any particulars or information in relation to their exhibits; the publication or reproduction may be in a printed form or visual image through electronic means and/or on the internet. **See Over**

PRIVACY STATEMENT

- 19 The information provided by Exhibitors is used by the Queensland Ag Shows and the Fraser Coast Agriculture Show Society Inc. to organise, process and conduct competitions at the relevant agricultural show (Fraser Coast Agriculture Show), sub chamber and state finals. By entering such competitions, you consent to your personal information being used for this purpose including this information being made available to sponsors, breed Associations, the media, the public, promotional purposes, archival purposes, published in publications and could be made available to other third parties for the purpose of promoting the Queensland Agricultural Show movement, or as otherwise required by law. Queensland Ag Shows and the Fraser Coast Agriculture Show Society Inc. have the right to take or use photographs of exhibits or exhibitors (and or property) and use photos in any or all marketing and media worldwide including online, now and in the future. Exhibitors have a right of access to and alteration of personal information concerning themselves in terms of the Privacy Act. This may be done by contacting Queensland Ag Shows.

WORKPLACE HEALTH AND SAFETY

- 20 All Queensland Ag Shows affiliated Society's Showground's are designated workplaces within the meaning of the Workplace Health and Safety Act 2011 and exhibitors / competitors are required to ensure that they and all persons under their direction or control, including their contractors or subcontractors, comply with all requirements of the Act and Queensland Ag Shows holds each exhibitor responsible to discharge its obligations to provide and maintain a safe place and system of work during occupation by the exhibitor/competitor of any area of the affiliated Agricultural Society's Showground's.
- 21 Each exhibitor/competitor will assess the risk to themselves, staff, volunteers, family, other exhibitors, Agricultural Society staff, show visitors, children and any person foreseeably affected by the presentation of their exhibit.
- 22 Risks identified by exhibitors/competitors will be eliminated or controlled by the exhibitor/competitor and particular attention will be paid to ensuring public safety and safety of other exhibitors/competitors.
- 23 Exhibits will only be held and handled by competent persons whose experience is known to the Exhibitor/Competitor.
- 24 A "No Smoking Policy" will be strictly adhered to by exhibitors/competitors. Smoking areas are marked in "ORANGE MARKINGS/FLAGS" which are located near the Cane & Cattleman's Bar & far end of Working Heritage display.. No food or drink is allowed in the smoking area. The exhibitors/competitors are advised that the use of Primus stoves, any heating or lighting appliances of a like character, or any naked light, is strictly prohibited in pavilions.
- 25 Any exhibitors/competitors intending to bring electrical equipment to the Showground's will be required to ensure that such equipment is fitted with earth leakage circuit breakers/residual current protection and that all electrical leads, tools and appliances have been inspected by a licensed electrical contractor and currently tagged. The use of double adaptors is prohibited as well as all power boards must also be tested and tagged. This is essential for the safety of all exhibitors and the general public and is a requirement of the current Electrical Safety Regulations.
- 26 All exhibitors/competitors will comply with the requirements of the Act and its Regulations and Standards in every other respect. This is essential for the safety of all exhibitors/competitors and the general public. The Act imposes very severe penalties in the event of noncompliance with its provisions. Any exhibitors/competitors who do not comply will not be allowed to exhibit at QCAS affiliated Shows.

DISCLAIMER

- 27 The information contained in the Competitions Schedule is gathered for the purpose of providing information to Exhibitors and show patrons. The information is a compilation of information provided by third parties and the QCAS. and affiliated Agricultural Society's does not warrant its accuracy and advises that any such information may be subject to change or amendment occurring at any time and thereby making the information incorrect. Subject to the QCAS legal obligations and responsibilities if you require confirmation of any information, please contact the QCAS Office.

PRIZES AND GST

- 28 The Australian Taxation Office has deemed that GST is payable on prizes if an Exhibitor is registered for GST and enters an Exhibit as part of a business enterprise.
- 29 The information an Exhibitor provides on the Application for Entry determines whether GST is applicable.
- 30 Any prize stated in this Schedule does not include GST.
- 31 GST will not apply:
- (a) If an Exhibitor enters an Exhibit as a hobby or private recreational pursuit; or
 - (b) If an Exhibitor enters an Exhibit as part of a business enterprise, the Exhibitor has an ABN, but the Exhibitor is NOT REGISTERED for GST.
 - (c) If an Exhibitor enters an Exhibit as part of a business enterprise, the Exhibitor is not entitled to an ABN as the business or enterprise is not operating in Australia.
- 32 GST will apply if an Exhibitor enters an Exhibit as part of a business enterprise, the Exhibitor has an ABN, and the Exhibitor is REGISTERED for GST.
- 33 Where GST applies, the Society will pay the prize money quoted in this Schedule plus 10% GST. The Society will issue a recipient created tax invoice.
34. All cash prizes, sashes, cards and trophies etc. must be claimed within 4 weeks from the closing date of the show. Prizes not claimed will become a donation to the Fraser Coast Agriculture Show Society.



Queensland Ag Shows

ABN 79 086 021 294
PO Box 240, Rocklea QLD 4106
Phone: (07) 3277 7747
Email: admin@qldagshows.com.au

COMPETITION REGULATIONS Queensland Chainsaw Racing Rules

(For the conduct of competitions at Queensland Ag Shows affiliated Agricultural Shows)

Subject to the Rules, By-Laws and Regulations of the Queensland Chamber of Agricultural Society's Inc. (Queensland Ag Shows) and the Society/Association relevant to this schedule, the following Regulations shall apply.

Where there is a conflict between these regulations and the regulations and rules of the local Agricultural Society, the rules of the Affiliated Agricultural Society prevail.

1 GENERAL REGULATIONS AND ACCEPTANCE OF ENTRIES

- 1.1. All rules set down by the organisers must be adhered to.
- 1.2. The decision of the Judge and the Chief Steward is final.
- 1.3. All competitors who are **operating a chainsaw** at an event must hold a minimum of a Chainsaw Level 1 accreditation and should a competitor be aged between 16 and 18 years at the time of the competition they will need to be assessed by a reputable and properly qualified independent party. Only if the independent party confirms the said individual meets their level of knowledge and skill to participate, will they be allowed to compete. (Competitors under the age of 16 are not allowed to compete)
- 1.4. If a competitor who is operating a chainsaw doesn't hold a Chainsaw Level 1 Accreditation, they will be permitted to compete at a maximum of two shows under the supervision of an experienced accredited ticket holder. After the two shows, if a competitor wishes to continue racing, they must complete their Chainsaw Level 1 Accreditation with an accredited provider.
- 1.5. ALL Competitors must always wear Australian Standard PPE Safety gear while competing. including but not limited to, Helmet & muffs (or ear plugs), eye protection, leg protection and steel cap boots.
- 1.6. No loose-fitting clothing to be worn.
- 1.7. All hammers, axes and blockbusters to be pinned with 1/8 – 1/4 inch pin, and handles are to be in good condition. Fibreglass handles are allowed without pinning. Wedges are to be in good condition.
- 1.8. Judges /Stewards have the authority to check equipment and saws at any time. This may include removal of the front muffler cover, pipe and top plastics. If saws are found to be out of specification for a class, disqualification from the event will occur.
- 1.9. Chain brake system must be operational if the saw is manufactured with one and you are competing in any production saw events. The only exception being the Production Hot Saw class.

- 1.10. There must be no loose handles or broken components on the chainsaw and saws must have complete sprocket covers.
- 1.11. Bar covers must be fitted when the saw is not in use.
- 1.12. Competitors must not be under the influence of drugs or alcohol.
- 1.13. Any competitor who is running a fuel mix, which is outside standard pump fuel, must notify officials prior to racing.
- 1.14. Officials and Competitors only in the cutting area while racing in heats and finals.
- 1.15. NO drop starts. This will result in instant disqualification. Chainsaw must be placed on the ground or between the knees for support when starting.
- 1.16. Operator needs to be in complete control of chainsaw. When the saw is fully operational, a hand on each handle is always required.
- 1.17. Left-handed operators are allowed to run their saw left side to allow safe and comfortable use of the saw.
- 1.18. Bad sportsmanship and/or bad language will not be tolerated. Judges have the discretion to instantly disqualify a competitor should they display bad conduct. Continuing bad sportsmanship could lead to a prolonged ban from the sport.
- 1.19. Following each heat/race, results will be announced so competitors have the opportunity to protest the result prior to the commencement of the next heat/race. All protests must be lodged by the competitor concerned accompanied by a protest fee of \$50.
- 1.20. If a protest is successful the \$50 will be returned to the competitor who protested, if its unsuccessful the \$50 should be paid to the Show Society with an explanation why it failed. The Protest will be assessed and determined by the Judges on the day.
- 1.21. Judging decisions will be made off the official cameras on the day. No other footage, unless called upon by the judges, will be considered.
- 1.22. (Optional) Cutters will be required to nominate the saws they will be using in the Modified Production and Unlimited Production Classes (including the post rip events). These saws will be tagged by officials. In the event of a mechanical failure of the nominated saw, the competitor is to see the officials to nominate another saw for them to use.

2 - Speed Events

- 2.1. All cutters are responsible for ensuring they are happy with their block, and is mounted securely in the stand, that they have a complete line marked around their block and that the block is square.
- 2.2. Qualifying competitors must use the same saw (powerhead) in subsequent semis or finals that they originally qualified with. In case of saw breakdown or malfunction, a competitor should immediately notify the judges/stewards. In this instance a competitor will be given 3 minutes to repair the saw. If the saw is not repairable within the time frame, a cutter can use a backup saw, as long as that saw hasn't raced in that event or wasn't planned to be raced in that event. One saw per cutter per event. Following the three minutes, the starting procedure will re-commence.
- 2.3. There will be a 2-minute call up before each event. Once competitors are at their blocks the starter will announce each competitor in the race. Competitors will then be given up to 1 minutes to warm their saws and stand to their blocks so the race can be commenced. Competitors will know the race is about to commence as the starter will walk down the line of competitors and commence marking them off.

- 2.4. The distance of 4 inches will be marked with a pen or chalk on the end of each block. Three (3) full disks must be cut from the end of the block. After the 3 full disks have been cut, the line must still be visible on the block all the way around the block and unbroken. Splinters and/or feathers of timber will not be folded back to determine if a line is complete. The line must be clearly visible without having to do this.
- 2.5. The first cut of the saw must enter the timber via a pierce cut into the top half of the block, BUT NOT THROUGH the top of the block. The disc **must** hang when the first down cut is completed and the disc is cut off on the up cut, unless there is a fault in the wood or the disc breaks away. If the first disc breaks away, all timber must be cut in the up cut. The second cut is a down cut and the third and final cut is an up cut. If all timber isn't cut, it will not be considered a full disc. If a disc is not completely cut off, the competitor must complete that cut from the direction that the cut is originally started from.
- 2.6. The specific Ladies speed races will not require a pierce cut. They will cut three (3) discs, with two down cuts and an up cut in this order. If an event has specific Ladies speed races on the program and the competitor chooses to race in the Open races on the day, they will not be eligible to compete in the specific Ladies races as well. Where there isn't specific Ladies races, the Ladies are able to compete in the Open competition.
- 2.7. Veteran events are for competitors over the age of 55 years. (must turn 55 during the year of competition).
- 2.8. All competitors must face the same designated direction.
- 2.9. The competitor's top hand should have thumb wrapped firmly around the handlebar for the pierce cut. (Kickback control)

3 - Fence Post Cutting

- 3.1. A Novice cutter is a cutter who has won less than 3 Novice Post rips. If the program has a specific Novice Post Rip event, that race will be a 100cc race.
- 3.2. If a Novice cutter chooses to compete in the Open Post Rip event on the day, they will not be eligible to compete in the Novice Race as well.
- 3.3. Novice competitors must be deemed competent and safe by the event organising committee before being allowed to start in the arena.
- 3.4. A spare saw can be warmed up but switched off prior to the start of the race. A second saw can be supplied to a competitor but once the race has commenced, it must not be started by anyone other than the competitor.
- 3.5. Competitors must wedge away from the crowd where possible. If in doubt, discuss with judges prior to racing.
- 3.6. The cutter must also draw a ring on the end of the billet at an allocated depth (as advised by the officials) for wedging. This wedge line must be drawn in lumber crayon, not chalk. Officials must check the crayon line is at the correct depth prior to the commencement of the race.
- 3.7. At the completion of the race, all posts must have crayon clearly visible on the end of each post at the wedged end. This line will have been checked prior to racing not after. Hence if you have a post that doesn't have crayon on it, the post will not be measured to check for correct depth, it will be deemed illegal, and disqualification will occur.
- 3.8. If cutters have any queries regarding the depth of wedging, defects in the timber, flares etc, ensure you check with the officials before the commencement of the race.
- 3.9. Billet supports or chocks are allowed to stabilise the billet before and during the race.
- 3.10. Wedges must not enter the billet before the start of the event.

- 3.11. Once the billets have been allocated to the competitor, cutters may commence marking the billet. Chalk lines can be drawn along the billet to assist the cutter.
- 3.12. The event will be called by the announcer/starter. Cutters are to be at their blocks within the two (2) minute call up time and during this time can warm up their saws. Cutters will then be asked to turn off their saws so they can be individually announced. Cutters will then be asked to start their saws and they will be given no more than one (1) minute to be ready for the starters signal.
- 3.13. The post cutting events are hot starts, saws running and on the ground before the start with throttle lock off. Failure to do this will result in disqualification. At start, competitor is to have one knee on the ground, with one hand on the saw and one hand raised. The official will start by acknowledging each cutter is ready to commence and then the flag will be dropped.
- 3.14. The chain break is to be engaged at all times when the saw is not in the operators' hands, if it isn't turned off. In the case of a saw that wasn't manufactured with a chain break (i.e. Stihl 090) the saw must be turned off when not in the operators hands.
- 3.15. After sawing is complete, wedges are hit with the sledgehammer or other approved equipment to free the posts from the billet heart.
- 3.16. All posts must be wedged which means all wedges must be entered. If a post falls free from the billet above the wedge line, a wedge must still be entered into the heartwood below the line. If a post falls free below the line, a wedge must still be entered whether in the post or in the heartwood.
- 3.17. If a V post is cut above the chalk line on the wedged end, it will be deemed an illegal post and be disqualified. If the post is V'd below the chalk line, it will be a legal post, but the post must be wedged.
- 3.18. When there is no visible distinct heart, heartwood must be cleared one foot from the wedged end on One (1) post that has distinct heartwood attached. Posts must be free from each other and free from the heartwood with no connecting splinters. Disqualification will result if there is no visible heart and posts are still joined to heart or other posts.
- 3.19. Competitors signal they have finished racing by raising both hands above their shoulders. A Competitor must not walk through their posts or touch or move any part of their billet after they have thrown their hands and prior to judging by officials.
- 3.20. Posts are to be a minimum of 5 inches across the back. If a legally cut post runs out to a slab whilst wedging, the post is classed as legal.
- 3.21. All posts must be wedged unless exempted by the officials i.e., in the case of an event which requires only rip and bust.

4 - Team Post Rips & Jack & Jill Events

Rules as set out for Fence Post Cutting above apply with the addition of the following:

- 4.1. One saw is to be used per team, with one designated operator.
- 4.2. Team members may help to roll the billet, but they can't place their hands on the timber while the saw is operational in the wood.
- 4.3. Wedging of the billet must not commence whilst sawing is in progress. Wedging commences when the saw is on the ground and chain brake is on for a one billet race, or when ripping of another billet commences (in a race with 2 or more billets per team). Whilst wedging is in operation, the other team member cannot assist.

- 4.4. Barring out of posts commences when the hammer is on the ground or when hammering commences on another billet (in a race with 2 or more billets per team). Both team members can help with the barring out of posts.
- 4.5. The first team member to raise both hands above their shoulders will signify the end of the race.
- 4.6. If the other team member is still working on the billet after this time, the team will be disqualified.
- 4.7. If there are two or more billets in the race, the wedging of the 2nd billet can be commenced by the saw operator if the other team member hasn't finished barring the posts of the preceding billet.
- 4.8. Traditionally in a Jack and Jill post rip the Man will undertake the sawing, and the Lady will undertake the wedging. It is up to the discretion of the individual event if they wish to vary this, however it must be clearly stated on the program if this variation is to occur.

5 - Vertical Disc Stacking

- 5.1. The cutter has One (1) minute to cut as many discs as they can off the top of the block. This time may vary depending on the size of the blocks and timber available.
- 5.2. Each disc must be cut through cleanly and must be a complete disc. NO back cutting is allowed to separate joined discs.
- 5.3. Every disc must remain on the stack to be counted. Discs on the ground will not be counted.
- 5.4. Competitors will be disqualified if they touch or support the stack with their hand, body or any part of the saw, except the bar and chain.
- 5.5. Knees are allowed to touch the ground for support and balance.
- 5.6. As soon as the allotted time is up, the competitor is to stop cutting immediately and stand back from their block to allow for judging.
- 5.7. A Timekeeper will count down to stop and each competitor. A person will signal the competitor to stop by tapping them lightly on the shoulder.
- 5.8. If two (2) competitors cut the same number of discs, the last cut in the timber will be measured. The block will also be measured and the person with the most timber (measured from the lowest point of the last cut) will win.
- 5.9. Left hand cutters are allowed to turn their saw to allow safe and comfortable operation.

6 – Cold Start Open and Production Hot Saw

- 6.1. An Open or Production Hotsaw may be configured as set out in clause 7 - Definition of Saw Classes of these regulations.
- 6.2. Prior to the commencement of any Hotsaw Event, all Hotsaws intended to be used in that event may be required to be presented for inspection by the Steward, or his delegate.
- 6.3. An Open Hotsaw may only be used in an Event if, following the inspection provided for in Rule 2, permission has been granted by the Steward or his delegate. The Steward must not grant that permission unless he has been advised, in writing, by a suitable technically experienced person. Nonetheless, the decision whether or not to grant permission is wholly at the discretion of the Steward (or his delegate, as appropriate) and must not be called into question by a Competitor.
- 6.4. No person may make any modification of any kind or description to an Open Hotsaw after inspection as provided in Rule 2 unless directed to do so by the Steward or his delegate.

- 6.5. At all times when carrying, testing or operating an Open or Production Hotsaw, a Competitor must be wearing safety protection equipment that is appropriate in the circumstances, including at least eye and ear protection and chaps or long pants that are cut proof and steel cap boots.
- 6.6. The Steward (or his delegate) may direct that a Competitor comply with any requirement which the Steward, or his delegate, considers is desirable in the interests of safety.
- 6.7. The Hotsaw may only be started and operated in the area designated for that purpose by the Committee, which area must include safety screens of no less than 600 x 1500 positioned in such a way as to protect persons in the area from impact of shavings thrown during operation of the Hotsaw.
- 6.8. At all times when a Hotsaw is operating, it must be held and must be pointing in a manner and direction that is safe for all Competitors and other persons in the vicinity.
- 6.9. In a Hotsaw Event, the block must be marked with a line drawn around the entire block, approximately 6 inches (15cm) from the end of the block. If during the conduct of the Event the line is severed or the Competitor cuts on the other side of the line, the Competitor is disqualified.
- 6.10. For the start, a starter cord tether must be used where the Open Hotsaw has a detachable starter cord. If a second starter cord is required, a tether is not required, but the second starter cord must remain within the area defined by the safety screens, failing which the Competitor is disqualified.
- 6.11. A Competitor must supply his own starter cord tether, or the organisers of the event can supply one to be used if they wish.
- 6.12. Prior to commencement of the warmup for the event, all persons, other than the Competitor, must vacate the area in which the event will take place, and must stay in such position as may have been nominated by the Committee for that purpose.
- 6.13. A period of 60 seconds will be allowed for warming up a Hotsaw. This will be announced as follows: "Timers ready, Competitors ready, 60 seconds to warm up starts now". The announcer will advise when there is 30 seconds remaining and at the completion of the full 60 seconds, the announcer will tell the cutters to shut down the saws.
- 6.14. The Hotsaw must be shut off, placed on the ground, and the Competitor's hands must be resting on the top of the block. The announcer will say: "Hands on the block, get set 3 2 1". The gun will be fired, or other signal to start given, at which point the timer starts.
- 6.15. Until such time as the starter's gun is fired (or other signal to start is given) the Competitor's hands must be placed in such a way so that the Competitor's fingers (not the thumb) of each hand break the plane of a line drawn longitudinally down the centre of the block. If the competitor moves their hands from the block, prior to the starters gun or other signal, they will be disqualified.
- 6.16. The Competitor must make 3 complete cuts of the block: first cut down, second cut up, third cut down. If a disk is not complete, the Competitor may make a fourth cut, either up or down. If there are not 3 complete disks, the Competitor is disqualified. The timer stops when the last disk is completely severed.
- 6.17. Rules 1 to 17 are binding in respect of all Cold Start Open & Production Hotsaw Events and Competitions and no Show Society or Local Association, seeking to conduct, or in fact conducting a Cold Start Open or Production Hotsaw Event or Competition may make any rule, or adopt any practice or procedure, that is inconsistent with those Rules. However, this does not prevent any such Show Society or Local Association from adopting any rule in respect of a Cold Start Open or Production Hotsaw Competition that is not inconsistent with those Rules and which enhances safety.

THIS DOCUMENT IS A NO DUTY OF CARE RISK WARNING
THIS DOCUMENT IS A WAIVER OF DUTY OF CARE

Do not complete "Event" details if this document only applies to use of facilities other than for an Event.

Event Name (Subsequently referred to as "the Event"):

Event Date:

Participant Name: Refer to Section F Participant's Date of Birth: Refer to Section F

Participant Address: Refer to Section F

Participant Contact Number: Refer to Section F

Participant Email: Refer to Section F

Section A - Supplier's statements about risk and duty of care

Queensland Chamber of Agricultural Societies Inc and

(Name of Show)(together the Suppliers) advise as set out below.

The handling of animals is a dangerous recreational activity as animals can act in a sudden and unpredictable way, especially when frightened or hurt.

Participation (including passive participation) in animal handling and/or physical competitions and/or Events at an agricultural show and/or use of the Suppliers' facilities contain elements of risk, both obvious and inherent.

Physical competitions and activities, Events and use of the Suppliers' facilities are all dangerous recreational activities. This document is a risk warning for the purpose of the Civil Liability Act (2003) QLD and Australian Consumer Law.

Any and all warranties, conditions and guarantees in relation to the competitions and activities, Events and use of Suppliers' facilities which are implied by Australian Consumer Law are excluded to the fullest extent permitted by law.

This risk warning is given by or on behalf of the Suppliers.

This document acts as an exclusion of liability under the Civil Liability Act (2003) QLD if the services supplied by the Suppliers are supplied without reasonable care and skill.

Section B - Participant's acknowledgements

By signing this document I acknowledge that:

Participation in the Event and/or use of the Suppliers' facilities is a recreational activity for the purposes of the Civil Liability Act (2003) QLD and Australian Consumer Law

1. I participate in the Event and/or use of the Suppliers' facilities at my own risk.
2. Participation in the Event and/or use of the Suppliers' facilities is a hazardous activity and involves a significant risk of physical harm and may result in injury, loss, damage or death to me and others.
3. Participation in the Event and/or use of the Suppliers' facilities requires certain skills and experience. I declare that I have sufficient skills and experience to be able to safely and properly participate in the Event and/or use the Suppliers' facilities.
4. Animals can act in sudden and unpredictable ways, especially if frightened or hurt, or if exposed to loud or unfamiliar noises.
5. The Event will be held in close proximity to rides and large groups of people and there may be loud and unfamiliar noises which can frighten animals used in the Event.
6. If the Event is held outdoors, there are risks to me as a result of the weather conditions, including either extreme hot or cold weather, rain or wind.
7. Insects or other animals may cause animals used in the Event to become frightened and act in an unpredictable way.
8. In handling animals, there is a risk of suffering injury including injuries caused by the animals.

9. I am responsible for ensuring that I have and will wear equipment suitable for my safety in my participation of the Event and/or in using the Suppliers' facilities.
10. I am responsible for the condition of any tools and equipment and ensuring that they are appropriate for the Event and/or in using the Suppliers' facilities.
11. I use the Suppliers' facilities, including for the Event entirely at my own risk, as I find them and with the prior acceptance of the risk of possible danger to me, both obvious and inherent.
12. At the time of participating in the Event and/or in using the Suppliers' facilities, I will not to any degree be under the influence of alcohol or illicit drugs.
13. I will not consume any alcohol or illicit drugs while participating in the Event and/or in using the Suppliers' facilities and agree that such use may result in my being excluded from the Event and/or from using the Suppliers' facilities with no entitlement to any refund of money paid to the Suppliers for entry.
14. I agree to be bound by the rules and guidelines of the Suppliers as varied from time to time.

Section C - Participant's acceptance of risk & no duty of care & waiver of rights

1. I acknowledge and agree that my participation in the Event and any associated activities and/or my use of the Supplier's facilities is dangerous and may have obvious and/or inherent risks as a result of which personal injury (and sometimes death) may occur.
2. I acknowledge that my participation in the Event and any associated activities and/or my use of the Supplier's facilities carry with them a significant risk of physical harm.
3. I accept and assume all risks of personal injury or death in anyway whatsoever arising from my participation in the Event and any associated activities and/or my use of the Supplier's facilities.
4. I waive my individual right to sue the Suppliers for all claims I may have for such personal injury or death against the Suppliers in any way whatsoever arising from or in connection with my participation in the Event and any associated activities and/or my use of the Supplier's facilities.
5. If I suffer personal injury or death while participating in the Event and/or from my use of the Supplier's facilities, I will not hold the Suppliers, their employees or agents legally responsible for any personal injury or death I suffer.
6. I will not sue the Suppliers, their employees or agents for any claims, actions, costs, damages or liability.
7. I release the Suppliers and their employees from legal responsibility for the services I have been provided and/or activity I have participated in, including the Event.

Section D – Signature (Please ignore and sign at Section F if using a Bulk Waiver)

Where the participant is 18 years of age or over:

I agree that I have read and understood this waiver prior to signing it.

I acknowledge that the Suppliers have permitted me to participate in the activity the subject of this document in reliance on the matters acknowledged by me and the representations I have made in this document.

I agree that this waiver is governed in all respects by and interpreted in accordance with the laws of Queensland and Commonwealth of Australia where applicable.

I agree that everything in this document is binding on me and my heirs, next of kin, executors and administrators.

Signature:

Dated:

Where participant is UNDER 18 years of age (to be completed by a parent or guardian):

Participant's Date of Birth

I (insert parent/guardian name),
being a parent or legal guardian of the above named participant, hereby consent to my child using the Suppliers' facilities and/or participating in the Event.

I confirm that I have read and understood and explained to the participant this waiver prior to signing it.

I acknowledge that the Suppliers have permitted the participant to participate in the activity the subject of this document in reliance on the matters acknowledged by me and the representations that I have made in this document.

I agree that this waiver is governed in all respects by and interpreted in accordance with the laws of Queensland and Commonwealth of Australia where applicable.

I agree that everything in this document is binding on me and my heirs, next of kin, executors and administrators.

Signature:

Dated:

~~Section E - Horse Details and Acknowledgement~~

If there are no horses in this activity then leave this Section Blank. If there are horses in this event then this Section MUST BE COMPLETED.

[illegible]

I, the owner/rider/exhibitor of the above horse, declare that, to the best of my knowledge, it is fit and healthy and I agree that if found to be otherwise, it will not be allowed to compete at this event. If prior to the event, the health of the horse changes from the date of this declaration, I will inform the event organizer for their due consideration.

Section F – Bulk Signature Facility (if required)

- I ACKNOWLEDGE THAT I HAVE READ AND UNDERSTOOD the above SECTIONS A through to D WARNING ME OF THE RISKS OF MY PARTICIPATION IN THE ACTIVITY
- I HAVE MADE ALL FURTHER ENQUIRIES WHICH I FEEL ARE NECESSARY OR DESIRABLE AND FULLY UNDERSTAND THE RISKS INVOLVED IN THIS ACTIVITY
- I SIGN THE DOCUMENT FREELY AND VOLUNTARILY WITHOUT ANY INDUCEMENT MADE TO ME

PARTICIPANT'S NAME (Please Print)	PARTICIPANT or PARENT/GUARDIAN'S SIGNATURE	ADDRESS	EMAIL ADDRESS	DATE OF BIRTH	CONTACT NUMBER

I, have observed the sighting and signing of this document by the participants (PLEASE PRINT) listed above.

.....
Signature of Responsible Official/Witness

Date:

SECTION 13 CHAINSAWS

Thursday 22nd May 2025

2025 Show Theme: **Our Rich History**

150 years - 1875 -2025

THANKS TO OUR SPONSORS:

Fraser Coast Chainsaws - Maryborough

Stutz Sawmill, Logging & Haulage -

Maryborough

Fraser Coast Rural Supplies- Maryborough

Handy Hire - Maryborough/Hervey Bay

Karen Hansen - Maryborough

Ian Rook - Tiaro

Chief Steward: Chris Robinson - 0437 590 407

Stewards: John Porter – 0429 106 327

Chainsaw Racing commences at 2:00pm

Thursday 22nd May 2025.

Section Conditions:

1. 2025 Schedules are available on the Fraser Coast Agriculture Show Society website at www.frasercoastagshow.com under Schedules, or from the Show Office at 84 Gympie Road, Tinana, Tuesday and Thursday 9am to 3pm.

2. **Entries to be lodged at:**

<https://showday.online/show/frasercoast>.

If entries do not have ALL information, including emergency contact details & bank details, the entry will not be accepted.

Manual entry forms available at www.frasercoastagshow.com then Schedule tab, scroll down to Chainsaws or manual forms available at the Show Office 84 Gympie Road, Tinana 9am to 3pm. Forms and payment can be lodged at the Show Office.

3. **Entry is via Gate 5 (Showgrounds Road off Bruce Highway) \$10 admission is to be paid online, link to be advised. Ph 0417 343 493. Ticket to be scanned at Gate 5 upon presentation of Chainsaw Accreditation. A vehicle pass will also be provided.**

4. Late Entries at the discretion of the Chief Steward. **Prize money to be paid into bank, please provide bank details when doing online entry.**

5. **Nominations close 3:00pm Thursday 8th May 2025.**

All competitors must be from the Fraser Coast Agriculture Show Society District.

6. If a competitor is not at the start of the event, the competitor will be disqualified.

7. There will be a two-minute call at the start of each event

8. **All competitors who are operating a chainsaw at an event must hold a minimum of Chainsaw Level 1 accreditation. Those who do not have Chainsaw Level 1 accreditation will be permitted to compete a maximum of two Shows under supervision with an experienced accredited ticket holder.**

9. The start will be a drop flag start or other start nominated by the Chief Steward.

10. In the event of mechanical breakdown at start, it will be the discretion of the starter to:

- Allow a time limit of three minutes to repair.

- Use another chainsaw.

- Relocate the next heat.

- Re-run of final to use the same chainsaw.

11. The distance that the three wheels are to be cut is a maximum 100mm and the chalk line must be visible on the block completely around and unbroken.

12. After judging each competitor to clear block.

13. All saws are to be checked by the Chainsaw Race Safety Officer prior to the event

14. Open Speed Event (Men's & Ladies) is restricted to an open class standard production saw with standard muffler, piston, cylinder and crankshaft. No power pipes or non-production saw attachments.

Chainsaw Racing Competition Regulations see attached Queensland Chainsaw Racing Rules or are available on the Document tab of Showdayonline.

Waiver in document tab on Showdayonline to be printed or from Chief Steward or Steward on the day and needs to be signed by competitors before commencing racing.

Diagram for Speed Racing is available on the document tab of Showdayonline.

Entry fees:

	per entry
Classes: 13001 - 13006	\$6.00 (inc. GST)
Classes: 13007	\$8.00 (inc. GST)
Classes: 13008 - 13011	\$10.00 (inc. GST)

Prizes Part 1 – SPEED RACING

	1 st	2 nd	3 rd	4 th
13001 Open Speed Jills	\$45	\$30	\$25	\$20
13002 78cc Speed	\$55	\$40	\$30	\$25
13003 100cc Speed	\$70	\$50	\$35	\$25
13004 Open Speed	\$75	\$55	\$45	\$30
13005 Disc. Stkg 78cc	\$55	\$35	\$30	\$25
13006 78cc Speed	\$45	\$30	\$25	\$20
Local Jills				

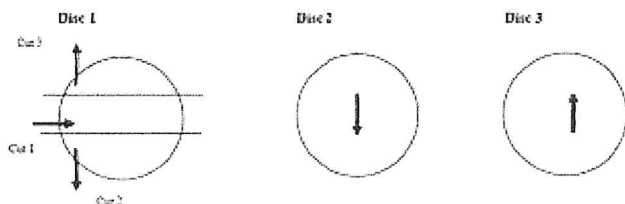
Prizes Part 2 – POST RIPPING

	1 st	2 nd	3 rd	4 th	5 th
13007 Under 100cc Farmers Rip	\$100	\$80	\$60	\$50	\$40
13008 Under 100cc Post (First 10 Entries)	\$250	\$165	\$135	\$100	\$80
13009 Noel Hansen Memorial Post Rip (First 10 Entries)	\$300	\$165	\$135	\$100	\$80
13010 100cc Post Rip (Jack & Jill) Sponsored by Ian Rook	\$280	\$170	\$130	\$100	
13011 Under 100cc Jills Post Rip	\$100	\$80	\$60	\$50	

PART 1 – SPEED RACING

Speed Racing Cut

(3 discs to be cut within 100mm of the marked end of the block)



Class 13001 - Open Speed Jills

Class 13002 - 78cc Speed

Class 13003 - 100cc Speed

Class 13004 - Open Speed

Class 13005 – Disc. Stkg 78cc Speed

Class 13006 – 78cc Speed – Local Jills

3 Discs – Start on the top block with 2 down cuts
With two discs & one cut from the bottom of the block, up cut to finish with one disc.

Ribbons for 1st, 2nd, 3rd.

PART 2 – POST RIPPING

Class 13007 - Under 100cc Farmers Rip

Class 13008 - Under 100cc Post
(First 10 Entries)

Class 13009 – Noel Hansen Memorial
Post Rip
(First 10 Entries)

Class 13010 – 100cc Post Rip – Jack & Jill
(Sponsored by Ian Rook)

Class 13011 – Under 100cc Jills Post Rip

Ribbons for 1st, 2nd, 3rd.

FRASER COAST RURAL SUPPLIES ENCOURAGEMENT AWARD – LADIES

1ST Lady Jills Post Rip Winner

Sash + \$100

President's Encouragement Award –

Chainsaws – Chosen from all classes by the President
of the Fraser Coast Agriculture Show Society or
representative)

Sash + \$100

2025 FRASER COAST AGRICULTURE SHOW

Maryborough Showgrounds & Equestrian Park

Thursday 22nd & Friday 23rd MAY 2025

This Entry Form remains the property of the Fraser Coast Agriculture Show Society Inc.

Entrant No:

APPLICATION FOR SECTION ENTRY

Section No: 13	Section Name: CHAINSAWS	
Mr / Mrs / Miss / Ms	First Name:	Surname:
Company or Body Corporate/Partnership Name (Provide the ABN where applicable):		
		ABN:
Postal Address:		
		Postcode:
Phone - Work:	Home:	Mobile:
Email:		

DECLARATION BY EXHIBITOR

This declaration has serious implications for taxation. The Fraser Coast Agriculture Show Society Inc strongly recommends you seek professional advice before completing.

Are you undertaking this activity as a hobby? Yes ☐ No ☐

Is this activity part of a Business Enterprise? Yes ☐ No ☐

If Yes, do you have an ABN? Yes ☐ No ☐

Are you registered for GST? Yes ☐ No ☐

If Yes, what is your ABN?

CONDITIONS OF ENTRY:

- I hereby apply to enter the following Exhibit(s) subject to the terms and conditions set out in the Queensland Ag Shows and the Fraser Coast Agriculture Show Society Rules and Section Conditions (collectively called the "Regulations") for the Fraser Coast Agriculture Show. I agree to be bound by these Regulations. All cash prizes, sashes, cards and trophies etc. must be claimed within 4 weeks from closing date of the show, if not they will become a donation to the Fraser Coast Agriculture Show Society.
- Application for Entry and the Regulations shall constitute the whole agreement upon which entries are submitted and I agree that all representations and statements not appearing herein or in the Regulations are hereby excluded.
- Society is at liberty to consider or to refuse this application, in its absolute and unfettered discretion.
- I hereby certify that all particulars relative to entries set out on this form are correct in all details.
- I agree to abide by the Regulations set down by the Fraser Coast Agriculture Show Society Inc. and the COVID Safe Regulations set down by Qld Health.

..... / / 2025
Signature of Exhibitor *Date*

Please refer to the Show Section Schedule for entry dates and other details.
Please complete both pages of this form.

2025 FRASER COAST AGRICULTURE SHOW

Maryborough Showgrounds & Equestrian Park
Thursday 22nd & Friday 23rd MAY 2025

ENTRY FEES ARE GST INCLUSIVE

Entrant No:

Section No: 13		Section Name: CHAINSAWS			
Mr / Mrs / Miss / Ms		First Name:		Surname:	
Class No.	Exhibitor Entry No. <i>(Stewards use only)</i>	No. of Entries per Class	Class Title / Description		Entry Fee (\$)
TOTAL ENTRY FEES \$					



Fraser Coast Agriculture Show Society Inc.

Postal Address
PO Box 232
Maryborough QLD 4650

CHAINSAWS SECTION BANK DETAILS

NAME _____

BANK NAME _____

BSB _____

ACCOUNT NO. _____

Signed: _____



Fraser Coast Agriculture Show Society Inc.

Postal Address
PO Box 232
Maryborough QLD 4650

CHAINSAWS SECTION EMERGENCY DETAILS

COMPETITOR NAME:

EMERGENCY CONTACT NAME:

EMERGENCY CONTACT PHONE NO.:

Signed: _____

Date: _____

Show Office | 84 Gympie Road, Maryborough | QLD | 4650
Office hours – Tuesday & Thursday 9 am to 3pm
Telephone (07)41235311 | Mobile 0417343493

WEBSITE- www.frasercoastagshow.com | Email secretary@frasercoastagshow.com