

June 14th -15th 2025



**Trial Site Information
for
Fond du Lac County Fair Grounds**

Fond du Lac County Fair Grounds

Rec Building
Buried Containers
and Interiors All
Levels

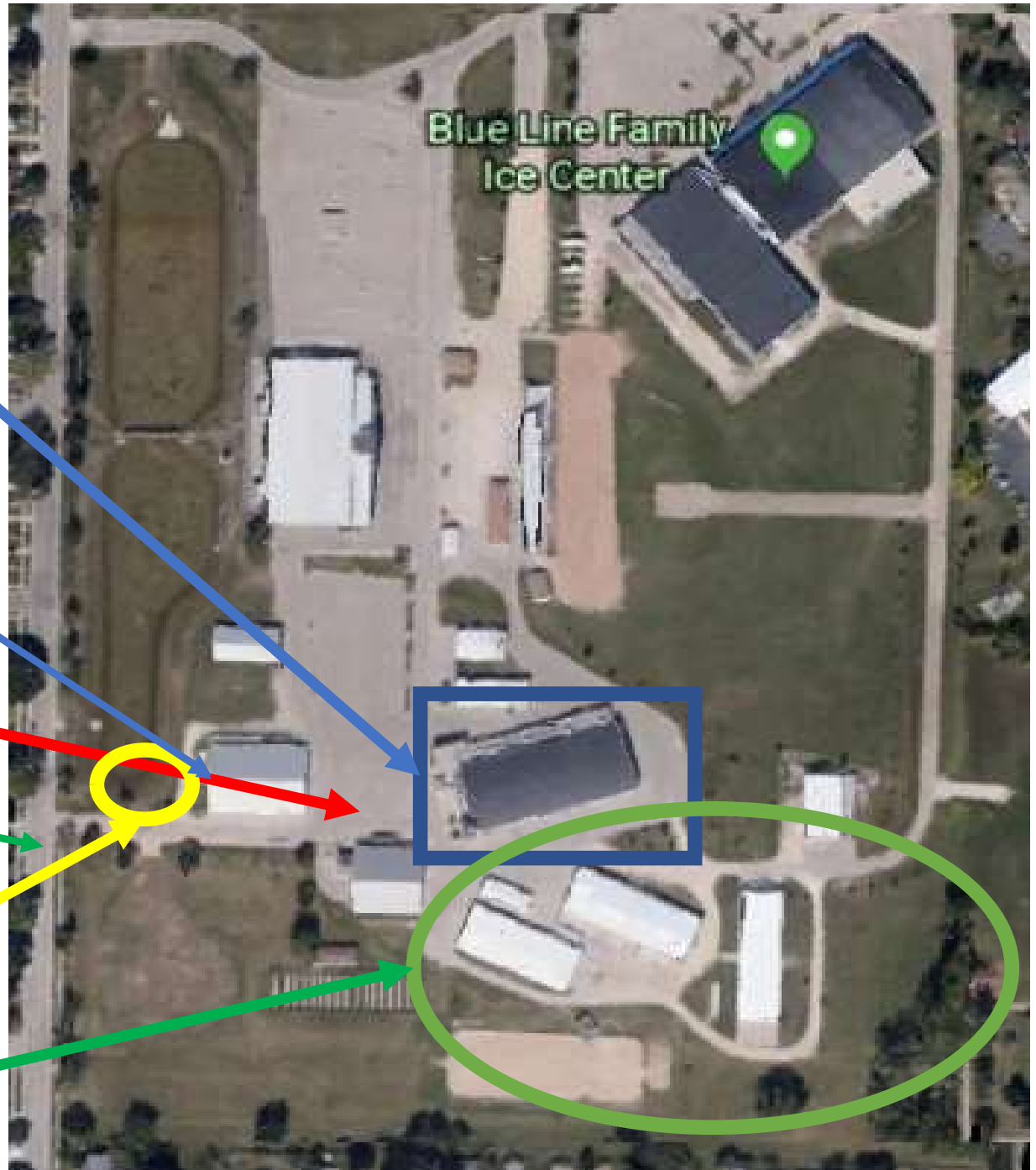
D Building Interior
Master & Excellent
Trial 1

Parking

17th Street
Entrance

Dog Exercise Area

Exterior
All Levels



Fond du Lac County Fairgrounds

We will be using the south section of the fairgrounds

Use the 17th street entrance only

D building is used for Trial 1 Master & Excellent Interior Searches.

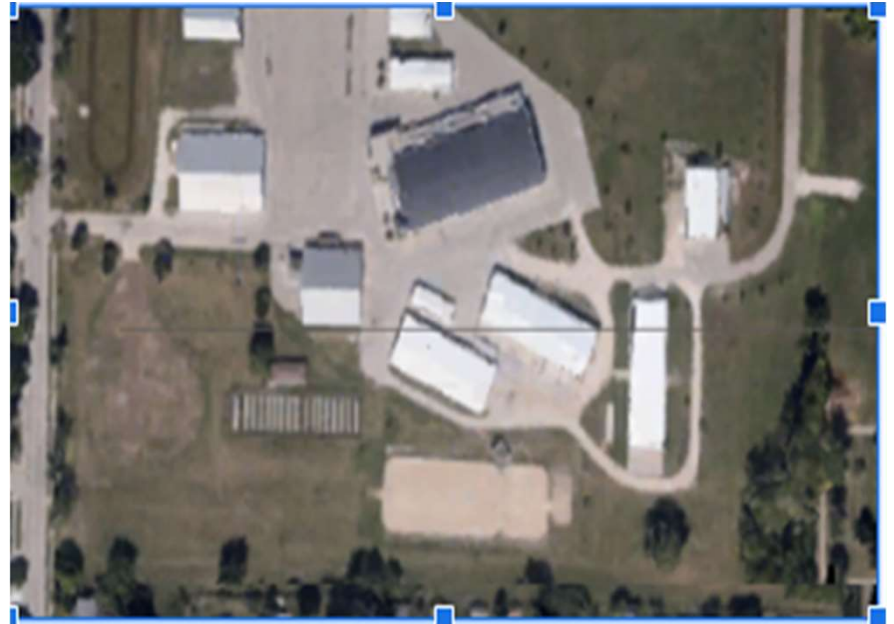
Cow Palace has restrooms. It is used for exterior staging.

Recreation Center – All levels for Buried & Containers. Interior Master & Excellent Trail2. Interior Advanced and Novice both Trials.

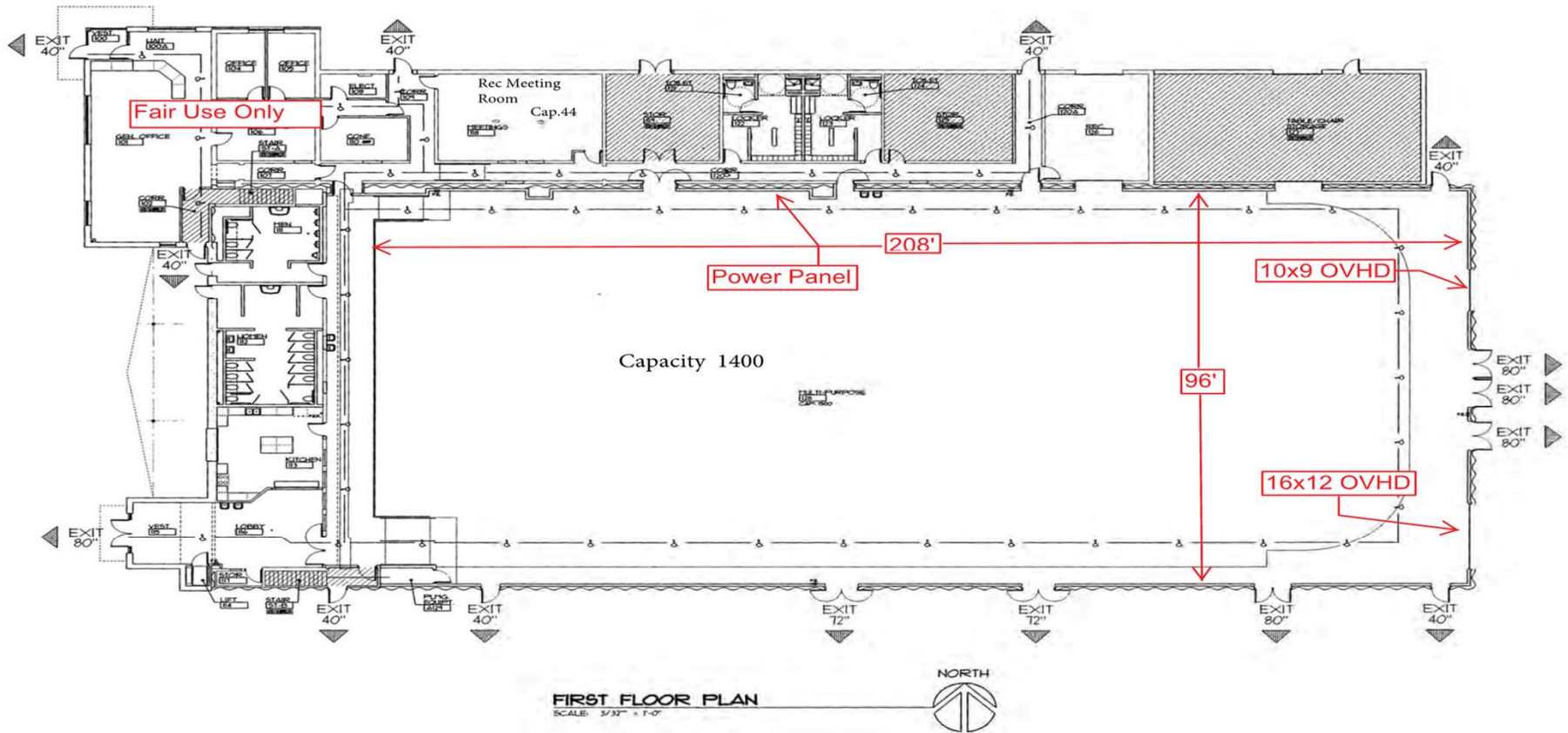
Parking on blacktop between D Building, Cow Palace and Recreation Center.

Dog exercise area is behind D building near 17th street road.

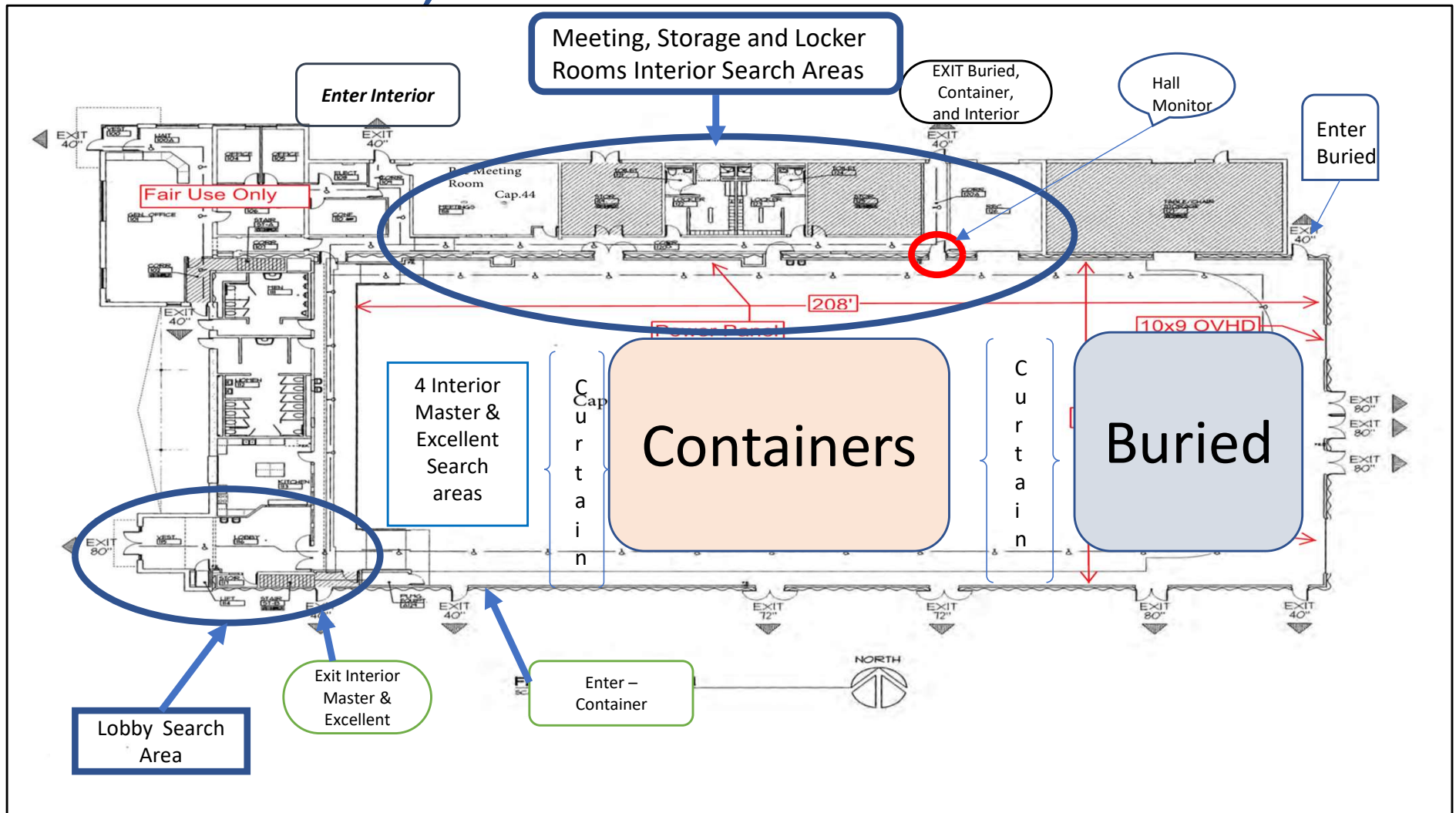
- Below is a picture of the south side buildings



Recreation Center Building Floor Plan



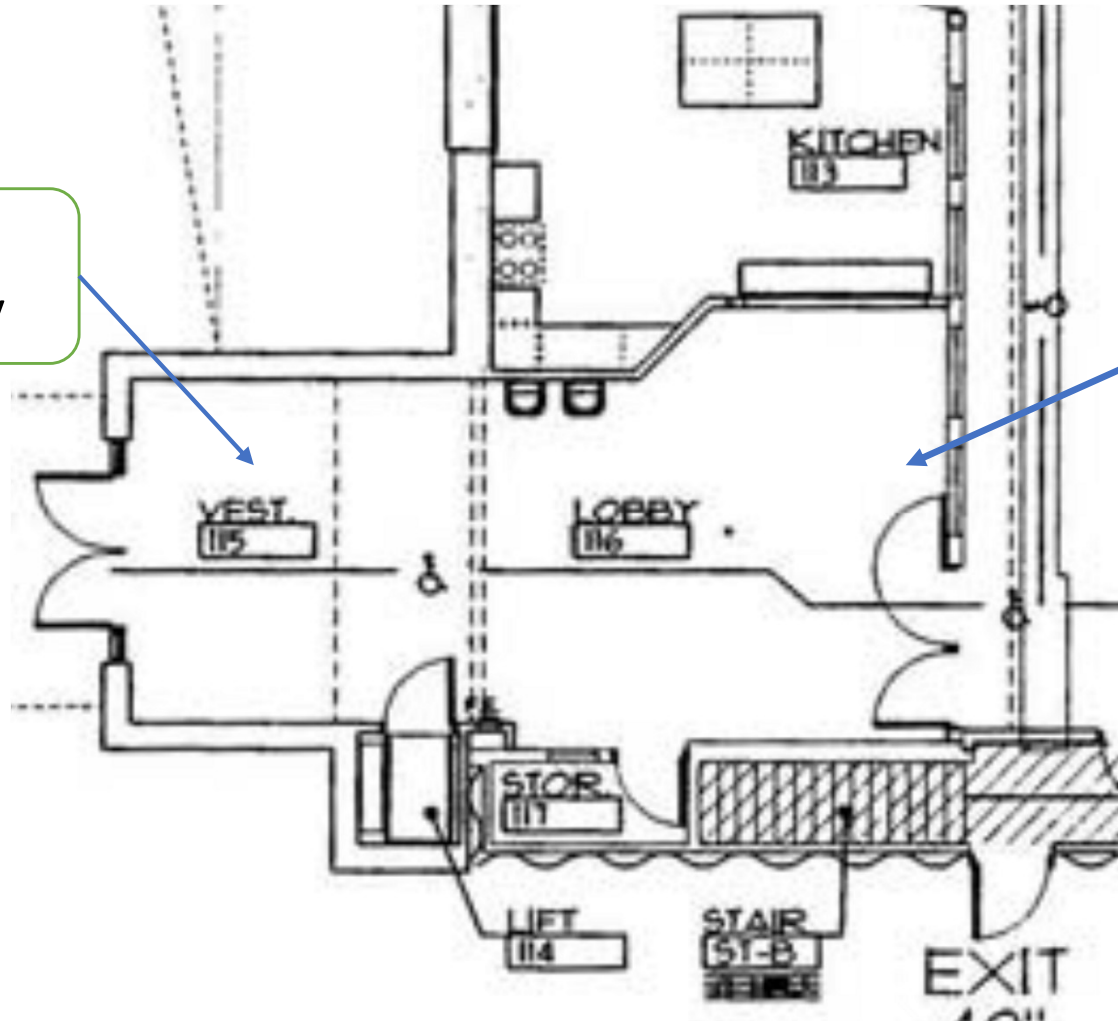
Interiors, Containers and Buried



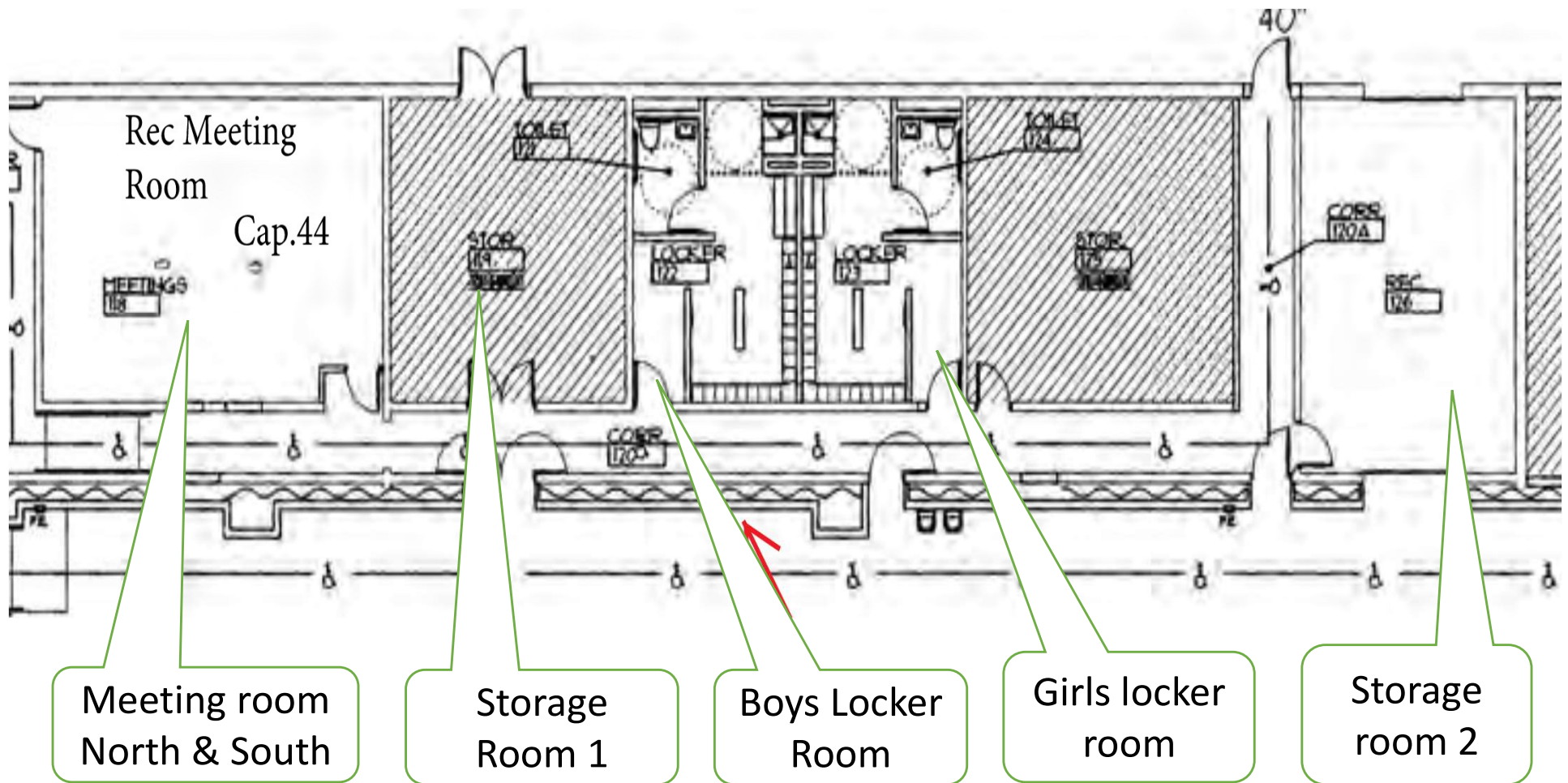
Excellent Interior search, Lobby

West
Lobby

East Lobby

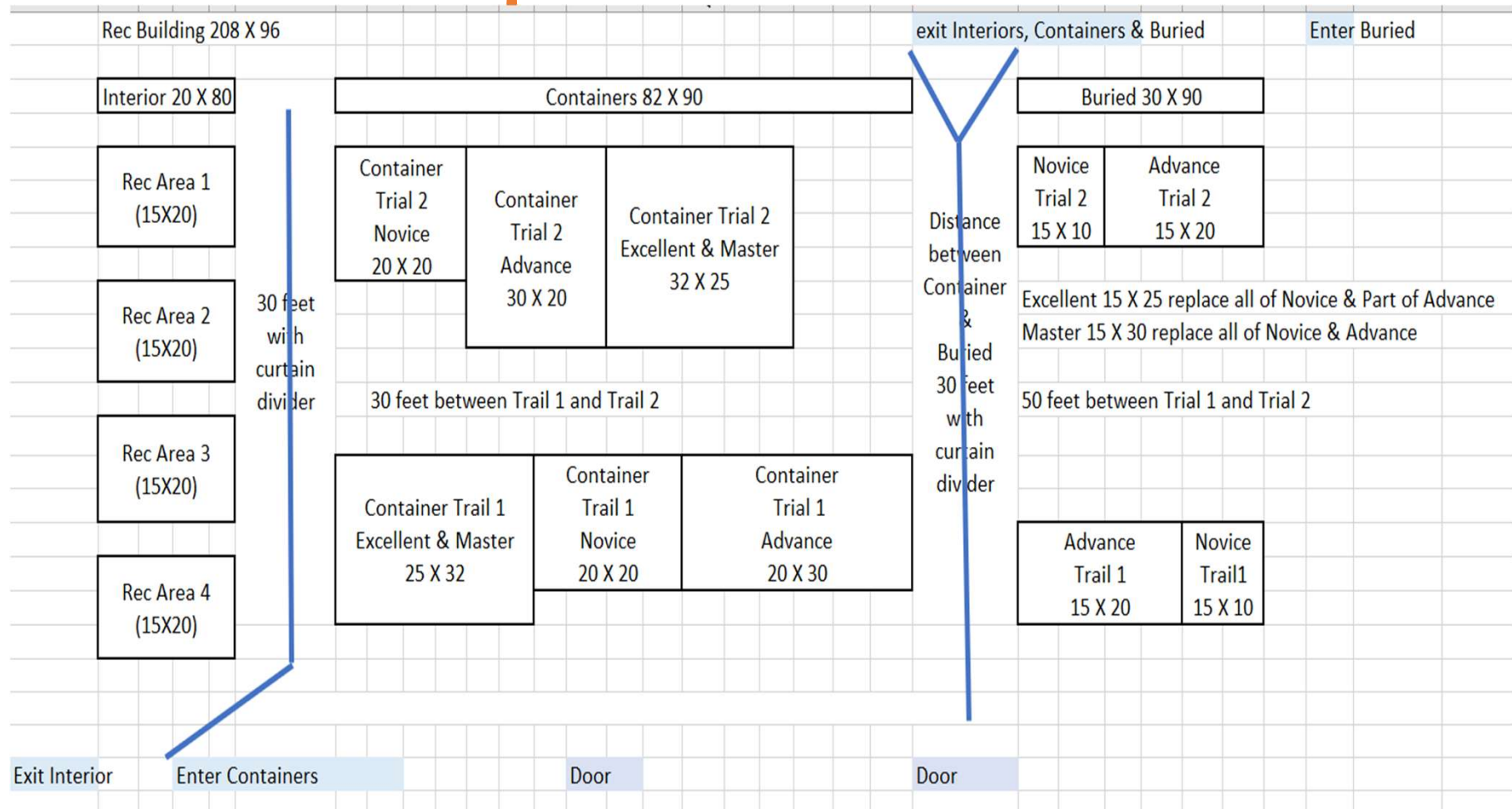


Interior Search Areas



Rec Building Floor Layout

- Container Excellent and Master will share same space.
- Buried Excellent and Master will use the same space as Novice & Advance
- 30 feet separates Container & Buried
- Curtains separate Interior and Container and Buried Search Areas



Judges Assignments & Proposed schedule

Saturday				
Christine Calace	Christine Kozanda	Jim Johnson	Sharon Jonas	Dave Conroy
Containers Novice T1 T2	Interior Master T1	Interior Novice T1 T2	Exterior Excellent T1 T2	Buried Master T1 T2
Containers Advanced T1 T2	Interior Excellent T1	Interior Advanced T1 T2	Exterior Master T1 T2	Buried Excellent T1 T2
Containers Master T1 T2	Interior Master T2		Exterior Advanced T1 T2	Buried Advanced T1 T2
Containers Excellent T1 T2	Interior Excellent T2		Exterior Novice T1 T2	Buried Novice T1 T2
Sunday				
Christine Calace	Christine Kozanda		Sharon Jonas	Dave Conroy
Exterior Excellent T1 T2	Containers Novice T1 T2		Buried Master T1 T2	Interior Master T1
Exterior Master T1 T2	Containers Advanced T1 T2		Buried Excellent T1 T2	Interior Excellent T1
Exterior Advanced T1 T2	Containers Master T1 T2		Buried Advanced T1 T2	Interior Master T2
Exterior Novice T1 T2	Containers Excellent T1 T2		Buried Novice T1 T2	Interior Excellent T2
				Interior Novice T1 T2
				Interior Advanced T1 T2

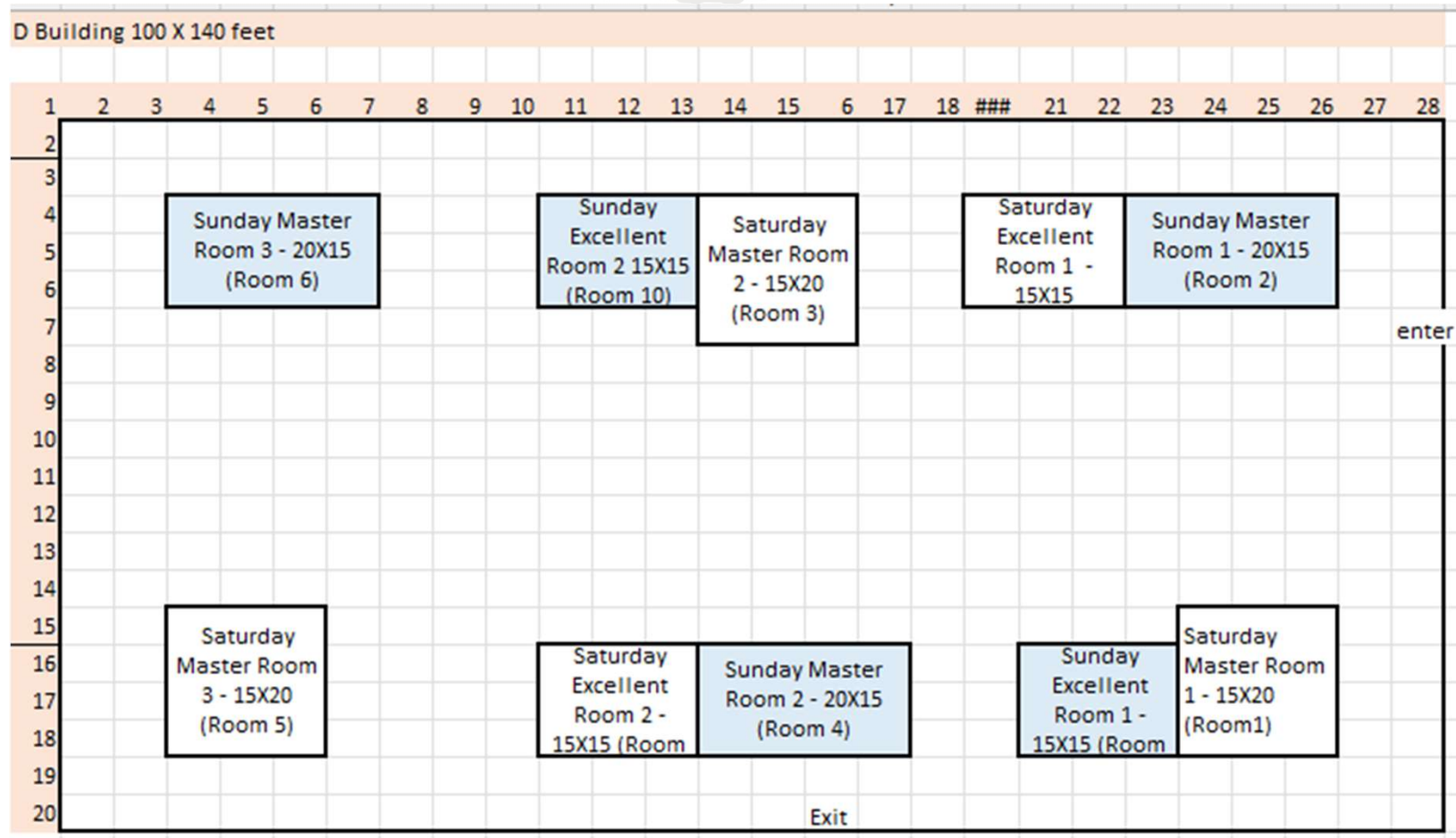
Interior Room Usage

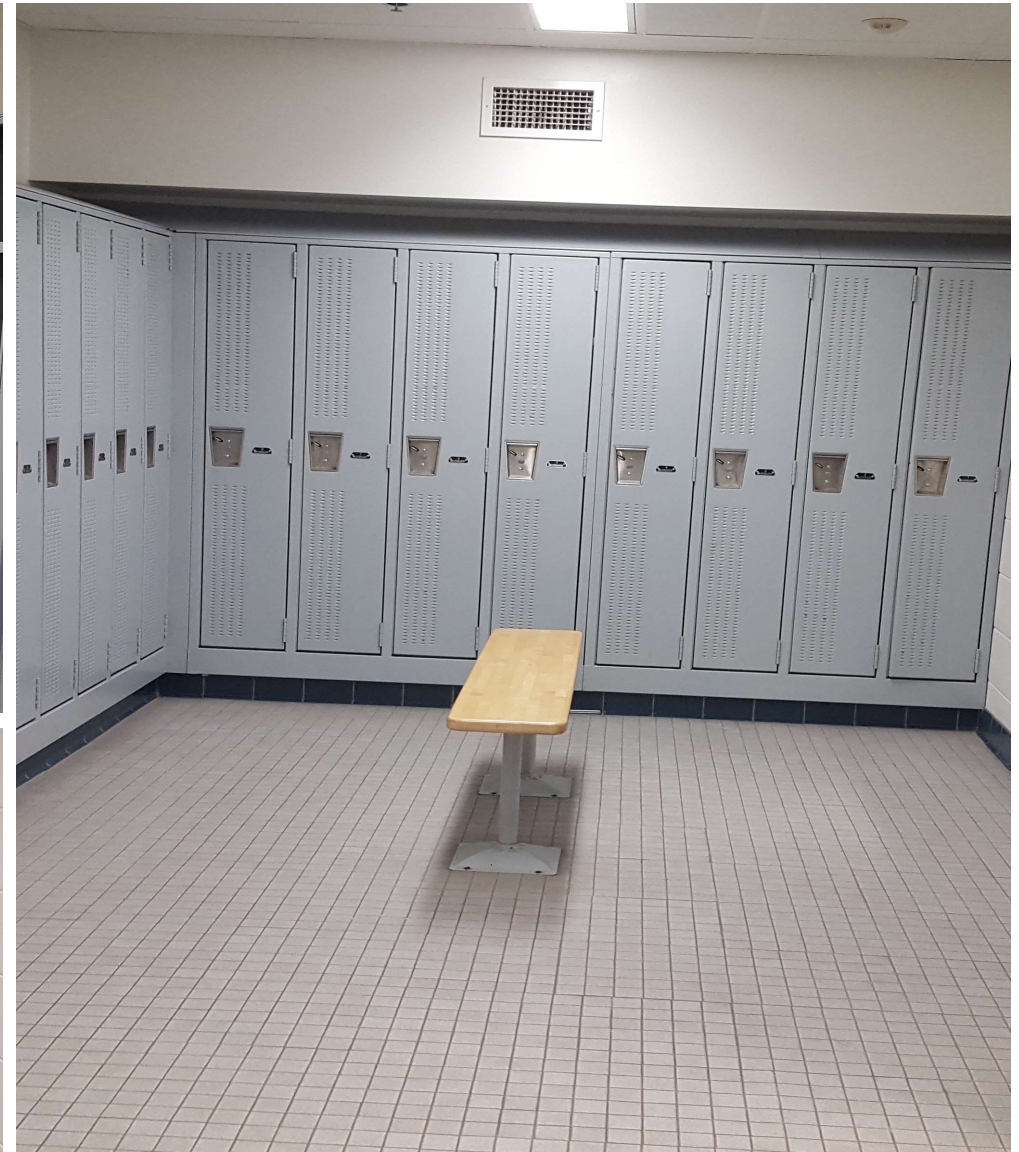
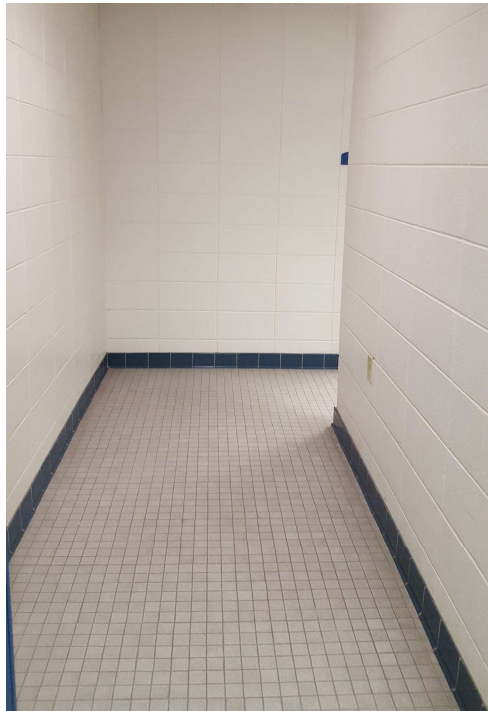
Saturday Novice Interiors 100-200			Saturday Advance Interiors 200-400			Saturday Excellent Interiors 400-800			Saturday Master Interiors 600-1000		
Trial 1			Trial 1			Trial 1			Trial 1		
Room	Souht Meeting	336	Room	Storage 1	441	Room 1: D Building Room 7	225		Room 1: D building room 1	300	
						Room 2: D Building Room 9	225		Room 2: D building room 3	300	
									Room 3: D building room 5	300	
	Total Size =	336		Total Size =	441		Total Size =	450		Total Size =	900
Trial 2			Trial 2			Trial 2			Trial 2		
Room	Storage 2	475	Room	Boys Locker	201	Room 1: Rec Area 3	300		Room 1: North Meeting Room	300	
						Room 2: West Lobby	330		Room 2: Rec Area 2	300	
									Room3 East Lobby	247	
	Total Size =	475		Total Size =	201		Total Size =	630		Total Size =	847
Sunday Novice Interiors 100-200			Sunday Advance Interiors 200-400			Sunday Excellent Interiors 400-800			Sunday Master Interiors 600-1000		
Trial 1			Trial 1			Trial 1			Trial 1		
Room	North Meeting	352	Room	South Meeting	336	Room 1: D Building room 8	225		Room 1: D building room 2	300	
						Room 2: D Building room 10	225		Room 2: D building room 4	300	
									Room3 D building room 6	300	
	Total Size =	352		Total Size =	336		Total Size =	450		Total Size =	900
Trial 2			Trial 2			Trial 2			Trial 2		
Room	Girls Locker	170	Room	Storage 2	475	Room 1: Rec Area 1	300		Room 1: Womens Bathroom	232	
						Room 2: East Lobby	247		Room 2: Rec Area 4	300	
									Room3 West Lobby	330	
	Total Size =	170		Total Size =	475		Total Size =	547		Total Size =	862

Interior Room Size Usage

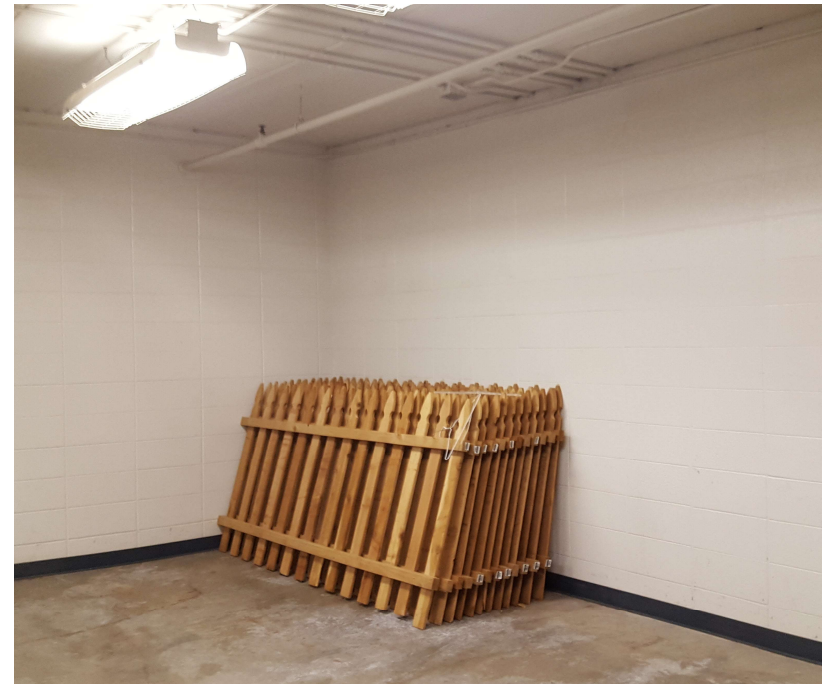
Description	Size (Sq Ft)	Saturday																Sunday																Time s Used	Total Max Hides	
		Nov T1		Nov T2		Adv T1		Adv T2		Ex T1		Ex T2		Mas T1		Mas T2		Nov T1		Nov T2		Adv T1		Adv T2		Ex T1		Ex T2		Mas T1		Mas T2				
		Used	Max	Used	Max	Used	Max	Used	Max	Used	Max	Used	Max	Used	Max	Used	Max	Used	Max	Used	Max	Used	Max	Used	Max	Used	Max	Used	Max	Used	Max					
Interior Rooms																																				
Whole Lobby																																				
East Lobby	247																1	3										1	2				2	5		
West Lobby	330												1	2																1	3		2	5		
Rec building area	1600																																0	0		
Rec building area 1	300																											1	2				1	2		
Rec building area 2	300																1	3															1	3		
Rec building area 3	300												1	2																			1	2		
Rec building area 4	300																														1	3		1	3	
Womens bathroom	232																														1	3		1	3	
Whole meeting room	688																																	0	0	
North Meeting Room	352																1	3			1	1											2	4		
South Meeting Room (L	336			1	1																		1	2										2	3	
Storage 1 less 4x5	441							1	2																									1	2	
Girls Locker (no bathroo	170																		1	1														1	1	
Boys Locker include bat	201					1	2																											1	2	
Storage 2	475	1	1																				1	2										2	3	
D Building (100 X 140)																																		0	0	
Room 1 (15 X 20)	300													1	3																			1	3	
Room 2 (20 X 15)	300																												1	3				1	3	
Room 3 (15 X 20)	300													1	3																			1	3	
Room 4 (20 X 15)	300																													1	3				1	3
Room 5 (15 X 20)	300													1	3																			1	3	
Room 6 (20 X 15)	300																													1	3				1	3
Room 7 (15 X 15)	225									1	2																							1	2	
Room 8 (15 X 15)	225																										1	2						1	2	
Room 9 (15 X 15)	225									1	2																							1	2	
Room10 (15 X 15)	225																										1	2						1	2	

D Building – Master Interior Trial 1; Excellent Interior Trail 1

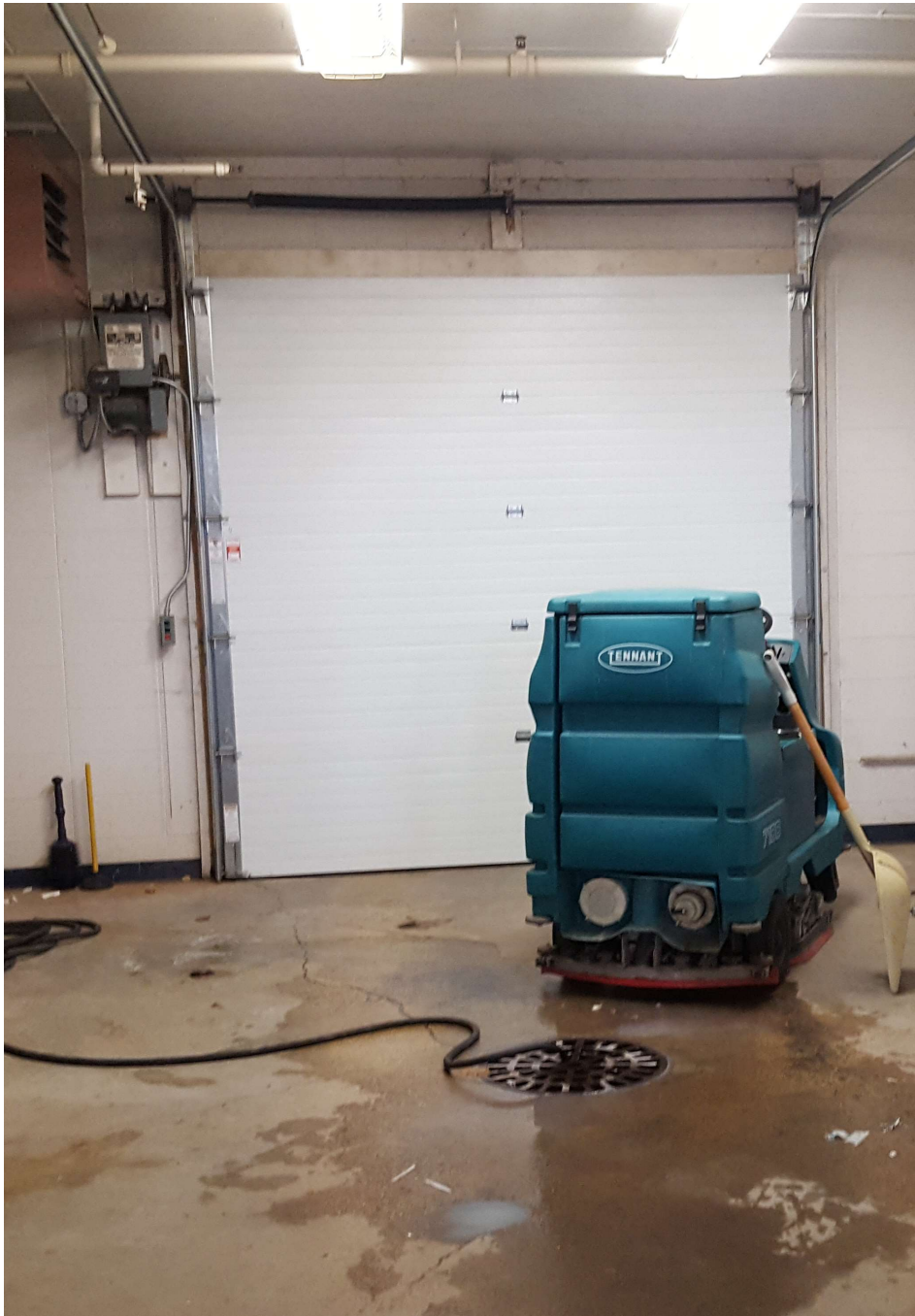




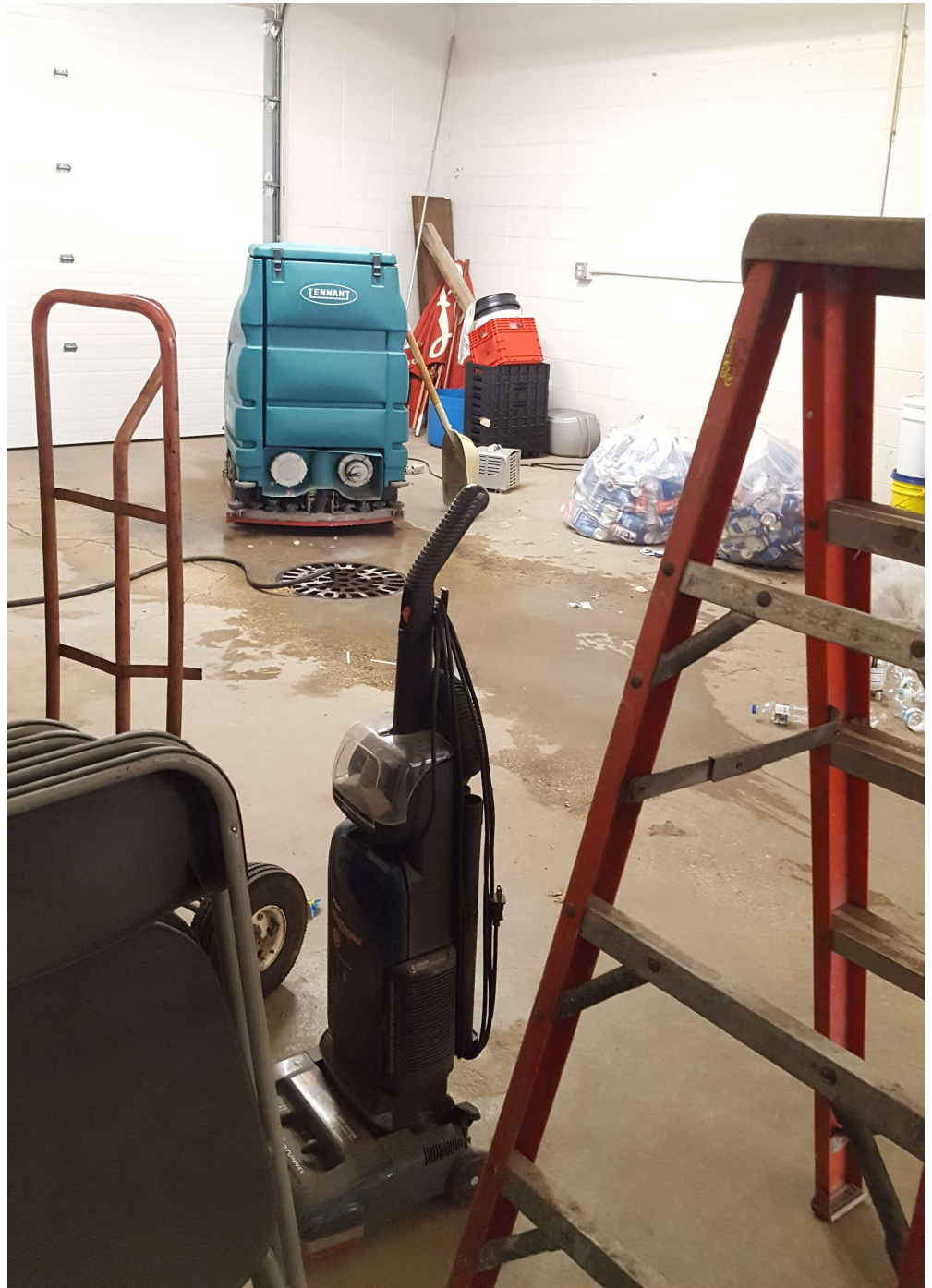
Men's Locker Room Interior search area
Women's Locker Room is the same



Storage area 1 (441 Sq Ft)



Storage area 2 (475 Sq Ft).





Meeting room will be 2 search areas – South Meeting (336 sq feet); North meeting (352 sq feet)





Photos of the lobby area, upper right is the exit doors lower right is the entering door.
Above is the lobby view to the kitchen.

Containers

Note:

- All containers in all classes are closed containers.
- Tissue paper is available for clear containers.



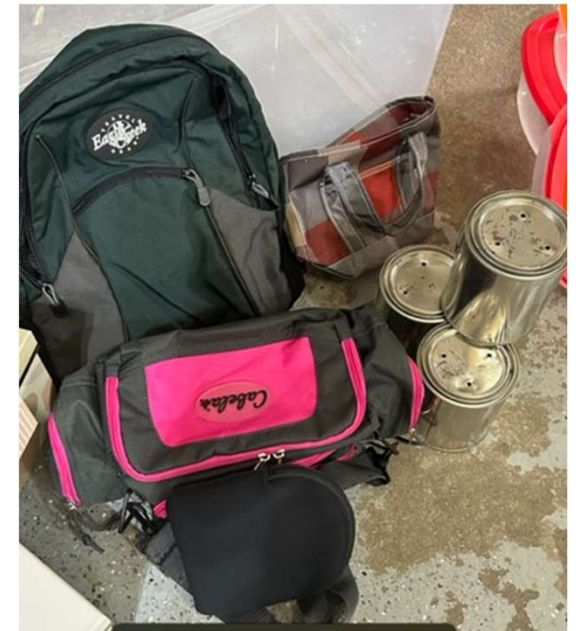
Novice Container



Advanced Containers

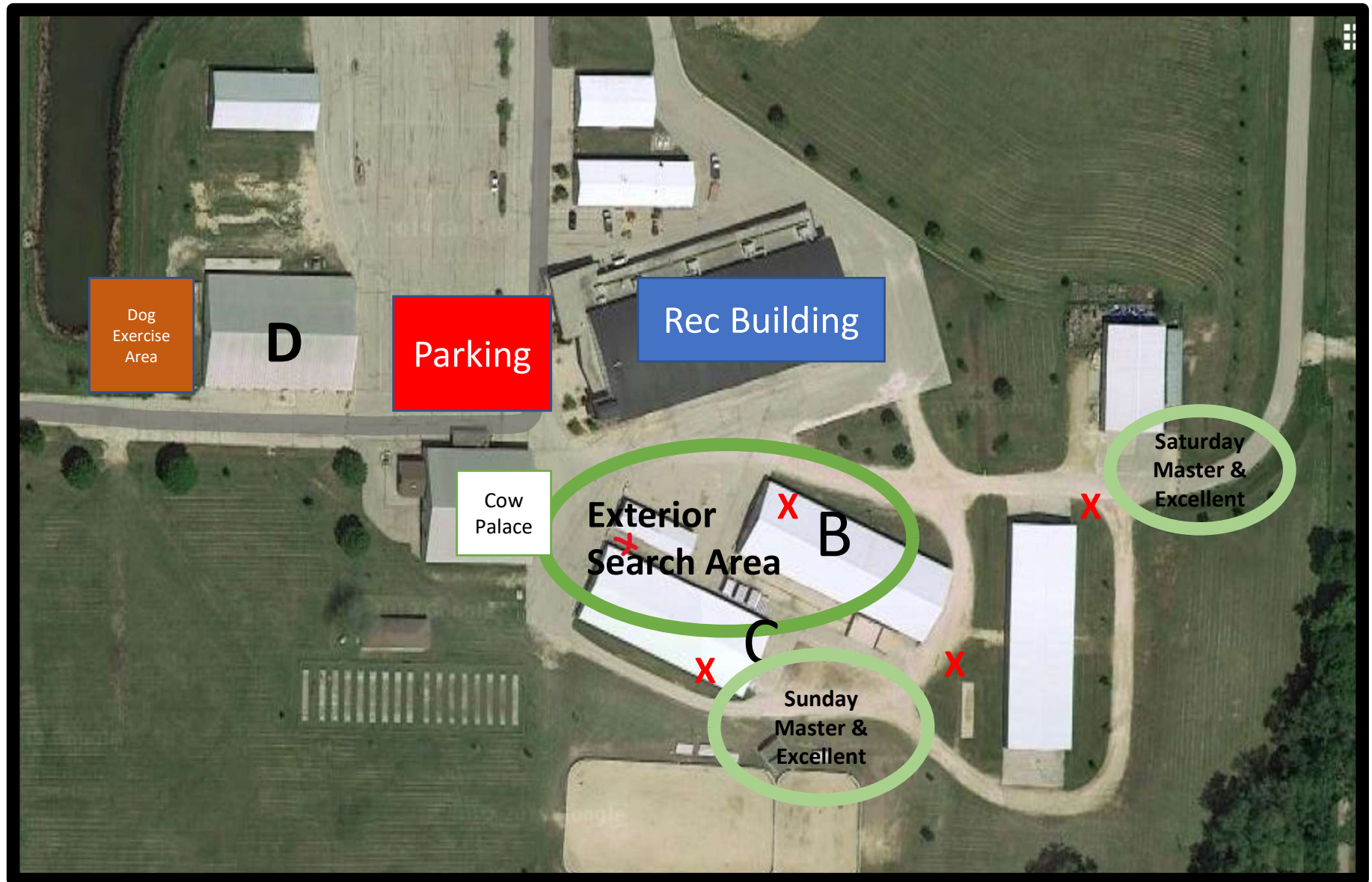
Excellent / Master Containers

- There will be many containers to choose from for these classes.



Exterior Search areas

X=picnic table



Master & Excellent Exterior Search areas

Saturday

- Master (1500-2000 sq ft)
Excellent (800-1500 sq ft)
 - Trial 1 Tomato Patch
 - Trial 2 Rims & Tires
 - First Stage Cow Palace
 - Second stage Back of B
@ picnic table
 - Exit Cow Palace

Sunday

- Master (1500 – 2000 sq ft)
Excellent (800-1500 sq ft)
 - Trial 1 Horse Hello
 - Trial 2 C Back
 - First stage in Cow Palace
 - Second stage side of C
building @ picnic table
 - Exit Cow Palace



Trial 1 Tomato Patch
Trial 2 Rims & Tires



And then exit to the cow palace

Saturday Exterior Master & Excellent –
begins in Cow Palace, then stage at
Picnic Table at the end of B building



Cow Palace Doors



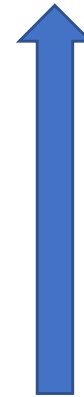
Sunday Master and Excellent Exterior Search

Sunday Exterior & Excellent begins at the cow palace.

This is the view from the cow palace to the Horse Hello



Sunday Exterior Master & Excellent Trial 1



Sunday Exterior Master & Excellent Trial 2
C Back (behind C Building)

Then exit to the Cow Palace

Advanced & Novice Exterior Search areas

Saturday

- Advanced (400-800 sq ft)
 - Trial 1 Cleary Back
 - Trial 2 Cleary Front
 - Enter & Exit at Cow Palace
- Novice (200-400 sq ft)
 - Trial 1 Cleary Back
 - Trial 2 Front B Building left
 - Enter & Exit at Cow Palace

Sunday

- Advanced (400-800 sq ft)
 - Trial 1 C Building Right
 - Trial 2 C Building Left
 - Enter & Exit at Cow Palace
- Novice (200-400 sq ft)
 - Trial 1 Front B Building right
 - Trial 2 Cleary Front
 - Enter & Exit at Cow Palace

Saturday Exterior Advanced



From the Cow palace walk
between C building and
Cleary



Trial 2 Front of Cleary
Building – Then exit cow
palace



Trial 1 – back of Cleary
Building

Saturday Exterior Novice



Sunday Exterior Advanced



Sunday Exterior Novice

