



PLANET EARTH

ECO PLANET EARTH CORP.

UNITING HUMANITY FOR CHILDREN, ANIMALS AND EARTH

OUR MISSION AND VISION

ECO Planet Earth Corp. is a 501C3 Ecological Conservation Organization (ECO).



MISSION

Our MISSION is to unite humanity for children, animals and earth



VISION

Our VISION is that we come together to solve global problems and develop the next generation of industry leaders.





COMMUNITY LEGACY GARDENS INITIATIVE

Coconut Grove Legacy Gardens



Join us for the Inauguration of the First of Many Legacy Gardens at
Greater St. Paul A.M.E Church | 3680 Thomas Ave. Miami, FL 33133

January 29th, 2025
9:30AM-1:00PM

#LetsGrowTogether @ecoplanetearth

The Legacy Garden Initiative is spearheaded by ECO Planet Earth (ECO) in partnership with the Coconut Grove Ministerial Alliance (CGMA), Law Enforcement Officers Memorial High School, Carrollton School of the Sacred Heart, FIU, Esquina De Abuela and Future AC Water System. ECO Planet Earth is dedicated to advancing eco-friendly technologies to fulfill our mission to unite humanity for children, animals, and the earth.

This Initiative benefits the historic black churches that have been in existence for over 100 years in Coconut Grove, our community volunteers and donors have come together to implement Legacy Gardens with each church which includes AC Water recycling technology, a vegetable garden and art as we beautify and preserve each property and align programs with health, nutrition, and sustainable living!



This Initiative is Sponsored & made possible because of City of Miami, District 2 Office of Commissioner Damian Pardo.
Join Our Movement of ECO Influencers | www.ecoplanetearth.org

OUR FOCUS AREAS

- (1) Environmental Education
- (2) Community Outreach
- (3) Habitat Conservation & Clean-ups

Lets Grow Together!

**DID
YOU
KNOW**

- 30-40% is wasted
- Valued at \$165 billion annually
- Rotting food in landfills releases greenhouse gases.



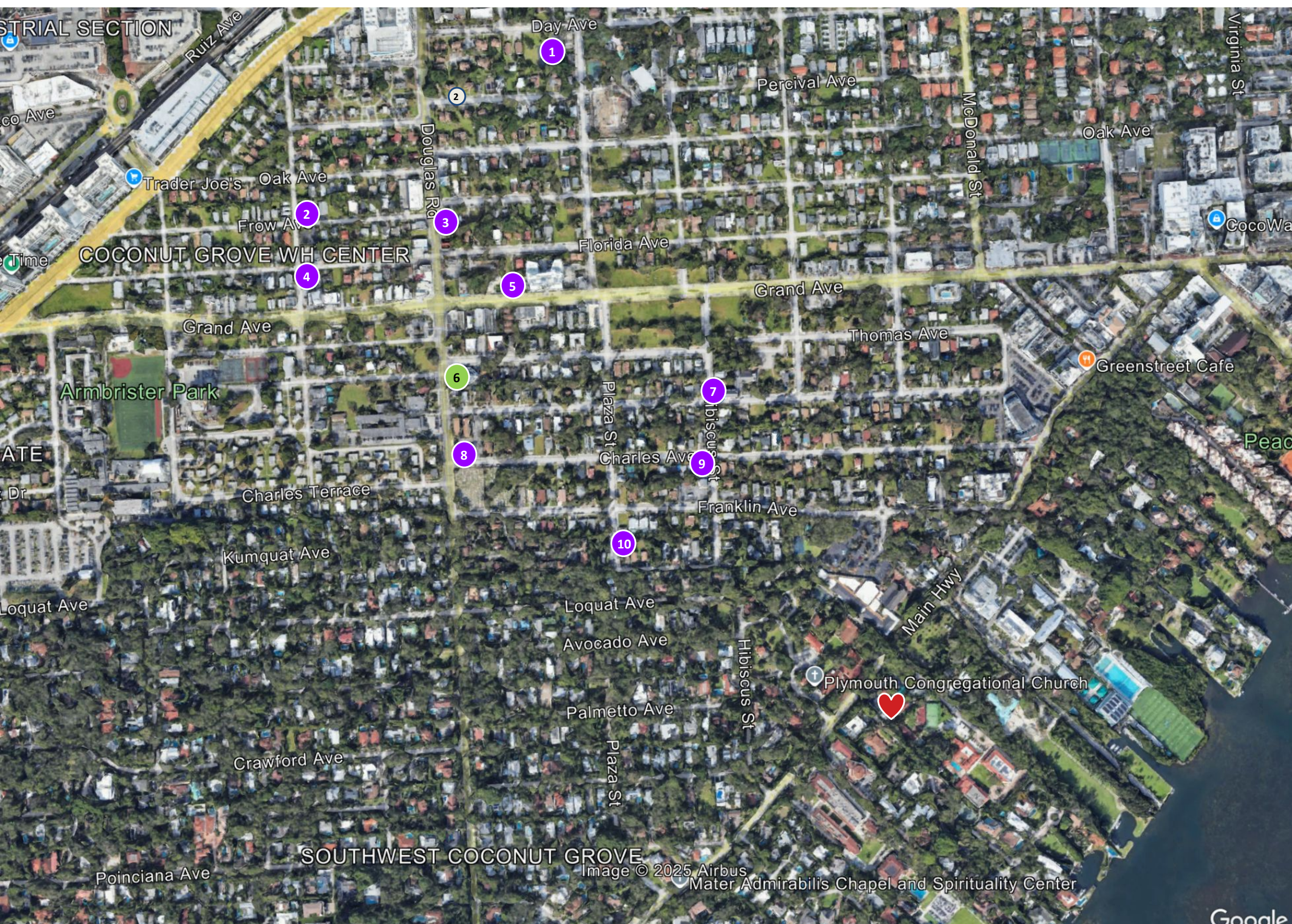
Legacy Garden Project Overview

The Legacy Gardens Initiative aims to heal and unite the community—one garden at a time. This initiative, by ECO Planet provides fresh spices and vegetables that can support local feeding ministries, while also empowering churches to implement AC water recycling systems for landscaping, ice-making, and drinking water. Through this effort, we seek not only to beautify each space but also to help congregations preserve and improve their properties from the outside in.

Each garden will serve as a living tribute to the community leaders who have left a legacy of service and sustainability. It will also become a space where all generations can come together—to grow, learn, and be inspired. By engaging youth and elders alike, the Legacy Gardens will cultivate the next generation of environmental champions committed to advocating for both people and the planet.

Let's Grow Together!

MAP KEY		
St. Matthew Community Baptist Church	3616 Day Ave, Miami, FL 33133	1
Beulah Missionary Baptist Church	3795 Frow Ave, Miami, FL 33133	2
Coconut Grove Church of Christ	3345 Douglas Rd, Miami, FL 33133	3
Greater Faith Temple	4715 Brooker St, Miami, FL 33133	4
Believers of Authority Ministries	3655 Grand Ave, Miami, FL 33133	5
Greater St. Paul AME Church (1st Legacy Garden done)	3680 Thomas Ave Miami, FL 33133	6
Christ Episcopal Church	3481 Hibiscus St, Miami, FL 33133	7
Macedonia Missionary Baptist Church	3515 Douglas Rd, Miami, FL 33133	8
St. James Baptist Church	3500 Charles Ave, Miami, FL 33133	9
Sweetfield Baptist Church	3585 Plaza St, Miami, FL 33133	10
Carrollton School of the Sacred	3645 Main Hwy Miami, FL 33133	<3



- ECO Planet Earth serves as a holistic agency to mobilize youth in High Schools and Colleges to volunteer as "ECO Influencers" as we beautify each church, school and park.
- Historically marginalized communities have been impacted the most by environmental destruction and human overconsumption. Trees and Oceans are carbon sink-holes and in zip codes of high concentrations of poverty, there are fewer job opportunities and high unemployment rates.
- These communities suffer from the most environmental dumping and climate gentrification as sea level rise have caused waterfront home-owners to move inward into inner cities, raising the values of homes and pushing out the historical neighborhoods for new development opportunities.
- Research shows that there is a direct impact of climate change on human health and exacerbation of existing inequities.
- Communities in Poverty suffer from Urban Deserts and lack of food and nutrition, as there is hunger and scarcity resulting from extreme heat, malnutrition, increased civil conflict and gun violence, mental health impacts and increased loss of jobs and income.
- Through education and innovative programs we can directly reach the most vulnerable communities and increase representation of minorities in Careers in Science, Technology, Engineering and Math (STEM).

Education is the Equalizer!



I sometimes worry about the youth and how the world must look from their eyes with everything going on.



It was so refreshing to see how much excitement they had for their futures and it made me smile cause that's really all we need, a next generation that's excited to shape the world around them



We implemented AC Water Recycling Technology for landscaping created by innovator and inventor, Michael Molinar!



It started with an artistic vision by the art muralist, Tierra Armstrong!











KENDRA SCOTT

Shop for Good!

DATE & TIME

April 19 - April 22

DETAILS

Join us at kendrascott.com
for a Virtual Kendra Gives Back event in support of our
Legacy Gardens Initiative!

Shop from home and use promocode:
GIVEBACK-LETSGROWTOGETHER
to give 20% of your purchase back to the Eco Planet Earth.



Kendra Scott Give-Back, Influencer Marketing Campaign Brand Ambassadors! @ecoplaneteearth

@tierra_armstrong

ECO Planet Earth Ambassador

Tierra Armstrong

Tierra Armstrong is a mural artist whose work explores introspection, duality, and human connection. Raised in London and shaped by global influences, she honed her craft in Chicago before creating murals across the U.S. and beyond.

From Museo del Juguete Antiguo México to projects with Jordan Air and F1 Miami Grand Prix, her bold, emotive murals bring vibrancy and meaning to public spaces.



@vikinamusic

ECO Planet Earth Ambassador

Vikina

Vikina is a Latin GRAMMY-nominated & Miami-based bilingual pop-electronic artist known for blending Latin flair with futuristic beats. Her music fuses English and Spanish, creating a vibrant, genre-bending sound that celebrates cultural duality.

Mentored by industry legends like Pitbull and Emilio Estefan, she's become a bold voice in both the Latin and EDM worlds. Her latest album, ¿QUESTIONS?, explores identity, technology, and empowerment through a tech-forward lens. As a performer, host, and actress, Vikina is redefining what it means to be a multifaceted artist in the digital age.



Easter Sunday Unveiling to the members of Greater St. Paul AME Church!





We are grateful for the Carrollton School of the Sacred Heart Community for joining us in service and faith to heal and unite the Coconut Grove Community one garden at a time through the Legacy Gardens Initiative!



YOU ARE CORDIALLY INVITED TO THE

LEGACY GARDEN UNVEILING & EARTH DAY CELEBRATION

Tuesday | April 22nd | 9:30am-Noon
Greater St. Paul A.M.E Church
3680 Thomas Avenue, Miami, FL 33133

Join Us as we celebrate unity in the community and our Earth Day inagural ribbon-cutting ceremony featuring the first Legacy Garden, with AC Water Recycling technology, community vegetable garden & commemorative mural of the Legacy Gardens Initiative.



WWW.ECOPLANETEARTH.ORG



THIS IS OUR HOME

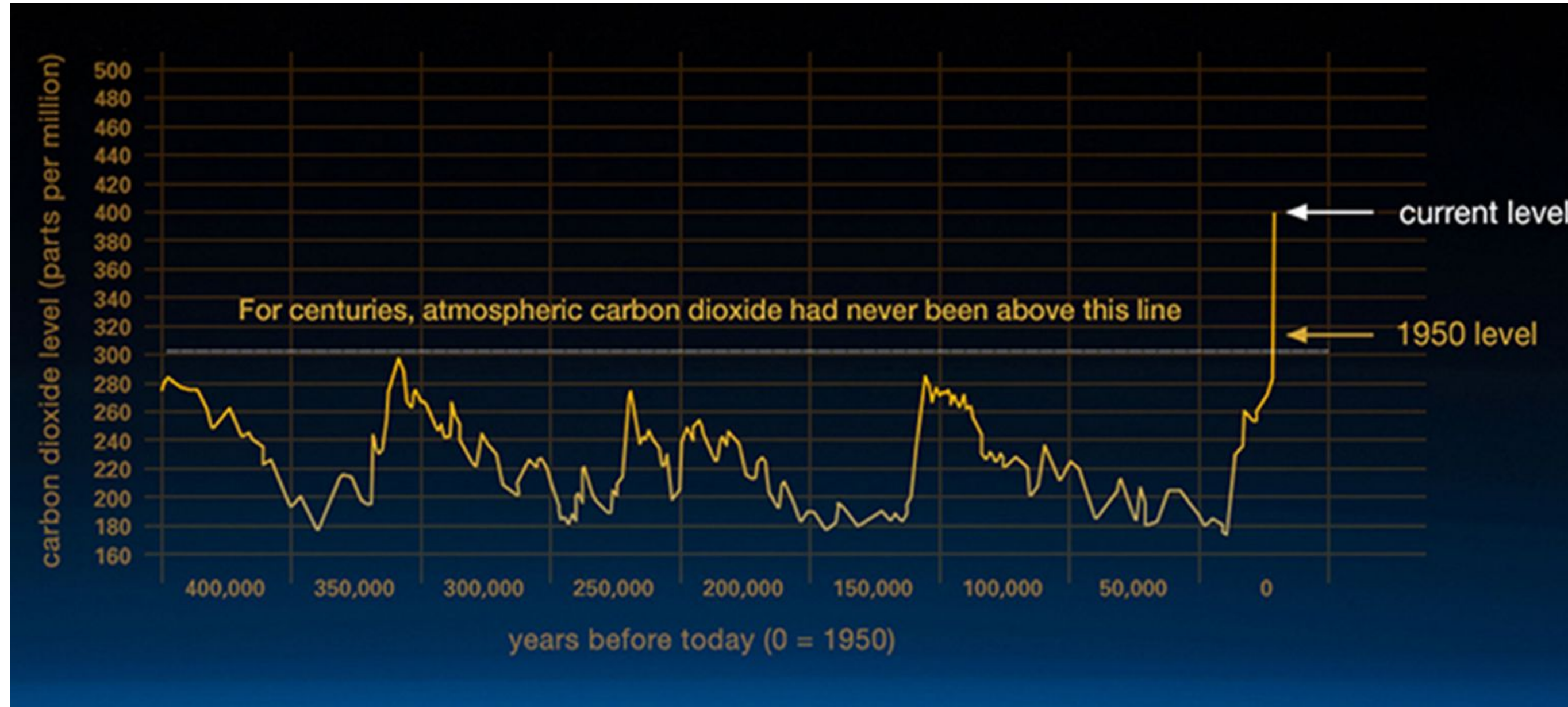
“

People who have strong empathy to always care for the environment are individuals who have deep love and affection for those closest to them



The ecosystem is an ecological system formed from the reciprocal relationship between living things and the surrounding environment

CARBON DIOXIDE LEVELS ARE THE HIGHEST IN HISTORY, Trees and Oceans are Carbon Dioxide sink-holes, they eat Carbon Dioxide & produce Oxygen



Carbon Dioxide Levels measured in April 2019: 411ppm

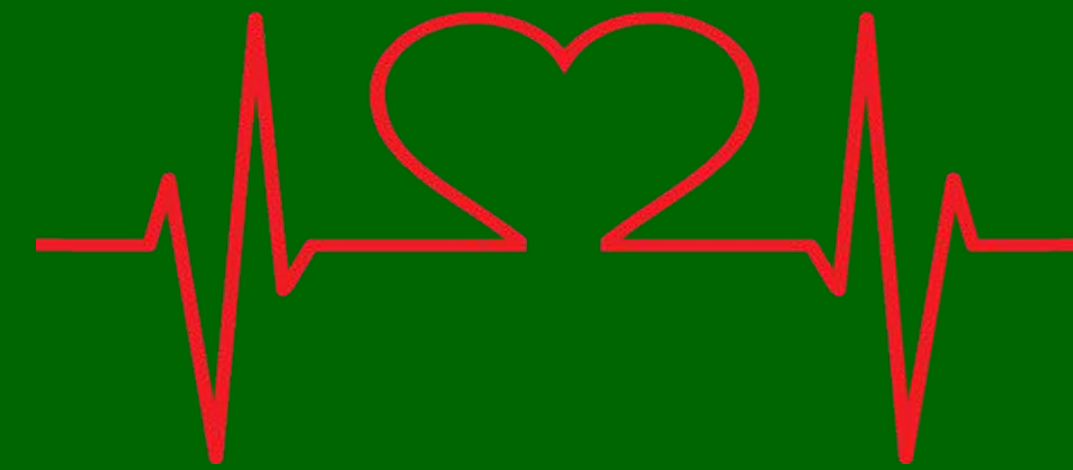
Credit: Vostok ice core records for carbon dioxide concentration and temperature change

High Tide and Sea-Level Rise and it's Impact on South Florida



In Florida, **\$23.3 billion** of existing property could be **lost by 2050**, and in coastal property, **\$152 billion** will likely be **at risk of inundation** at high tide.

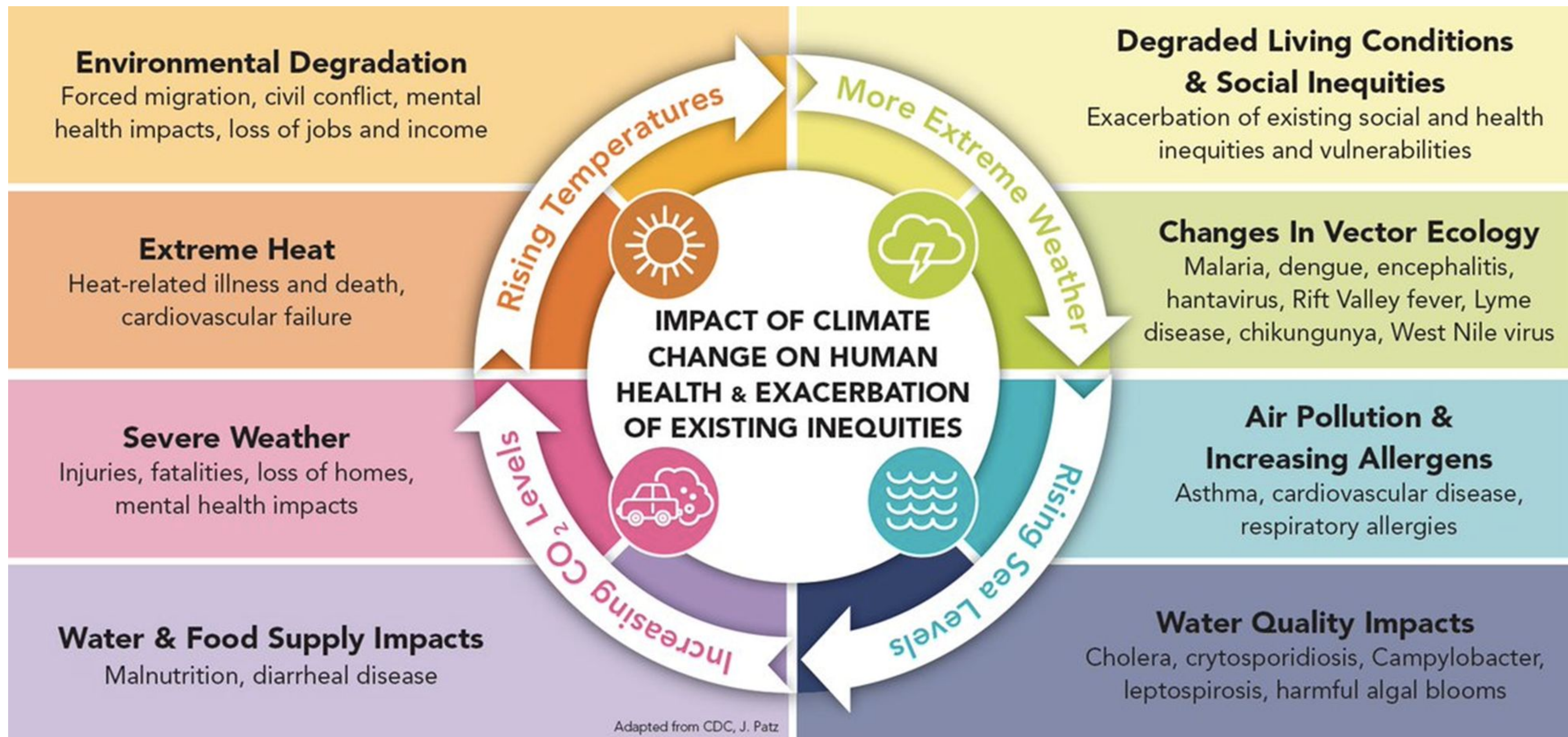
Risky Business Report



**“CLIMATE CHANGE IS
THE BIGGEST HEALTH
THREAT OF THE 21st
CENTURY”**



**World Health
Organization**





PLANET EARTH

THANK YOU!

