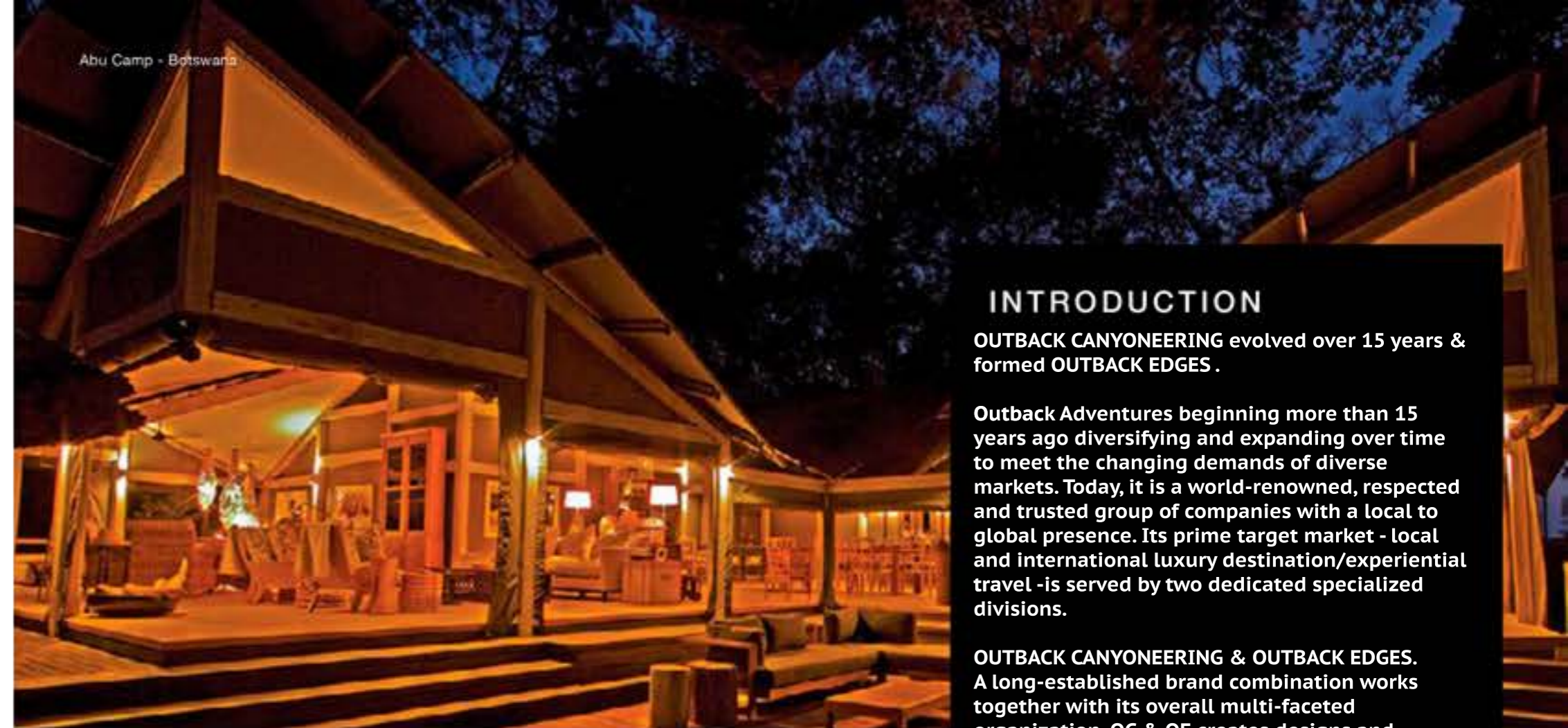




Rooted in the
HEART OF LUXURY

| | |
|----|-----------------------------------|
| 03 | INTRODUCTION |
| 04 | CREDENTIALS |
| 04 | MANUFACTURING FACILITIES |
| 04 | QUALITY ASSURANCE |
| 05 | CONCEPT AND DESIGN |
| 05 | TENT FEATURES |
| 06 | FULLY INTEGRATED TURNKEY SOLUTION |
| 07 | CONSTRUCTION AND INSTALLATION |
| 07 | MAINTENANCE SERVICE/TRAINING |
| 07 | DESIGNED TO IMPRESS |
| 08 | LUXURY TENT RANGE |
| 30 | MERU TENT RANGE |
| 32 | STANDARD LUXURY TENT RANGE |
| 34 | PORTFOLIO |
| 44 | CONTACT US |



“ **WORLD-RENOWNED,**
respected & trusted ”

INTRODUCTION

OUTBACK CANYONEERING evolved over 15 years & formed **OUTBACK EDGES**.

Outback Adventures beginning more than 15 years ago diversifying and expanding over time to meet the changing demands of diverse markets. Today, it is a world-renowned, respected and trusted group of companies with a local to global presence. Its prime target market - local and international luxury destination/experiential travel - is served by two dedicated specialized divisions.

OUTBACK CANYONEERING & OUTBACK EDGES. A long-established brand combination works together with its overall multi-faceted organization. OC & OE creates designs and supplies innovative, individuated, award-winning luxury outback-adventures & facilitates safari camps, game reserves, lodges and leisure resorts across the Great American West. OC & OE immerses and merges its premier services & delivery capacity across six continents.

OUTBACK EDGES
A recreational services bureau focusing on servicing our clientele & guests have been fueled by the diversification of **WESTERN MINERAL & ORES**. Outback Edges online presence began October of 2021.

CREDENTIALS

◊ Over 15 years' experience 'Installing LUXURY in CANYONEERING @OUTBACKEDGES'

◊ Over 15 yrs' experience at Western American Canyoneering Adventures & Alpine Desert Safaris

◊ Collaborating and Integrating Award-winning Products & Services with over 65 years' experience

◊ Winners of a combined collective of various design and other awards

◊ Rock solid Installations Into temporary or permanent locations [focusing on geomantic architecture]

◊ Installations are enhanced with guaranteed safety & longevity

- ◊ LUXVILLATent™ supported by SO 9001:2015 & ISO 14001:2015 certified canvas manufacturing factory
- ◊ LUXVILLATent™ supported by B-BBEE certified factory

◊ Integrated & Combined Quality & Environmental policies w Localized Ecology-friendly Awareness

◊ Local portfolio West Coast States: California – Oregon – Washington

◊ Local portfolio SouthWest States: Arizona | Nevada | Utah | Idaho | Wyoming | Montana

◊ Global portfolio: North American regions not included in 'Western American States'

◊ Global portfolio: Mexico & it's specifically targeted areas which function for our applications

◊ Global portfolio: Africa | Asia | Australia | Europe

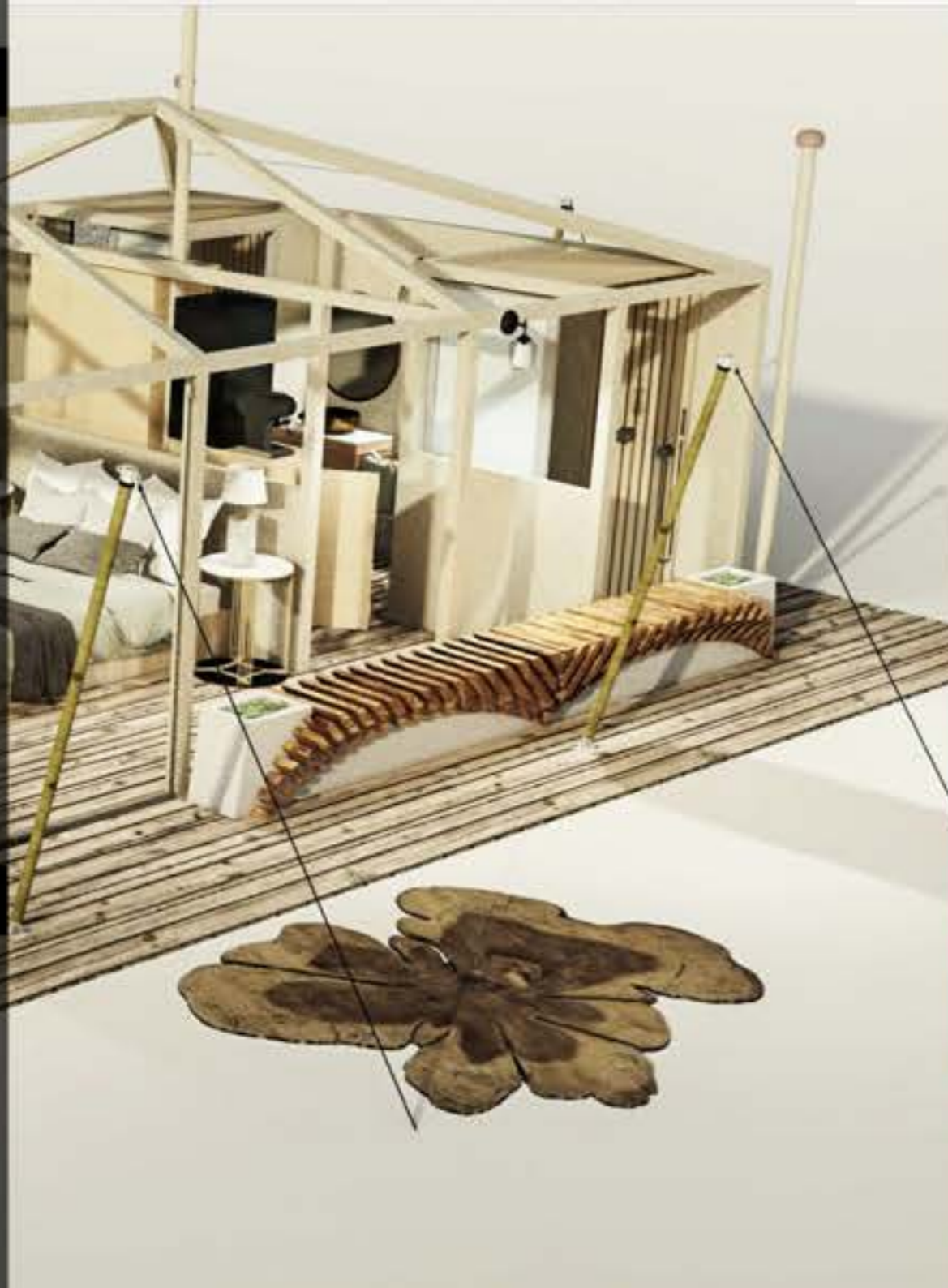
◊ Global portfolio: Middle East | South America

MANUFACTURING FACILITIES

TENT FEATURES

Whether a customizable ready-to-go design or a one-of-a-kind custom-made & personalized creation, each LUXURY NOMADTENT is as functional and durable as it is beautiful...

- ◊ Up to four-layered roof to optimise ventilation
- ◊ Galvanised, powder coated, or stainless steel framing
- ◊ Durable RipTech™ canvas body
- ◊ Large shade-net windows with outer storm flaps
- ◊ Velcro zipper doors for easy maintenance
- ◊ Body poles and webbing straps
- ◊ UV-resistant, insulated, rot proof, waterproof and can be fire-retardant



WINNING INNOVATION

RESPECTED & TRUSTED

Our goal is to always create something unique that incorporates, fulfills and exceeds our client's expectations while surprising and delighting them & their guests with something astonishing.

- ◊ Innovative in-house design & engineering team combines with award-winning world-class installation
 - ◊ Thorough pre-consult research of prospective client's needs and proposed location
 - ◊ Collaborative non-hierarchical design approach
 - ◊ In-depth assessment of client needs and facilitation of clients' guests & objectives
 - ◊ In awareness of and in-tune with, but not dictated by, 'design trends'
- "Designed to astonish. Built to last"

CONCEPT & DESIGN



Settlers Drift - Kariega - South Africa



Goo-Moremi Gorge - Botswana

TENT FEATURES

Whether a customisable ready-to-go design or a one-of-a-kind bespoke creation, each luxury tent is as functional and durable as it is beautiful ...

- ◊ Up to four-layered roof to optimise ventilation
- ◊ Galvanised, powder coated, or stainless steel framing
- ◊ Durable RipTech™ canvas body
- ◊ Large shade-net windows with outer storm flaps
- ◊ Velcro zipper doors for easy maintenance
- ◊ Body poles and webbing straps
- ◊ UV-resistant, insulated, rot proof, waterproof and can be fire-retardant



FULLY INTEGRATED TURNKEY SOLUTION

Advisement and consultancy service – all camp design, construction and installation elements, incl décor

Air conditioning/ventilation/heating and cooling systems

Back-of-house solutions - staff accommodation, kitchens, laundry and storage

Basic civils

Camp concept, design and planning

Construction

Electrical distribution system

Flooring and decking

Installation

Interior décor, fittings and furnishings

Maintenance service and training

Plumbing and ablutions

Potable water system (filtration, reverse osmosis or desalination)

Power generation or on grid

Project management

Sewage and wastewater drainage system and treatment

Site research and preparation

Transport and logistics

Obligation-free consultation at the Canvas and Tent office park in Centurion or via Skype

SEDONA WEST



SEDONA WEST



FLAGSTAFF PANDEROSA

CONSTRUCTION AND INSTALLATION

◇ Installation team has over 15 years in the Western Coastal and American SouthWest States

◇ Installation team has over 45 years' of combined local and international experience

◇ Trusted relationships with contractors, suppliers and artisans to minimize delays and maintain standards

◇ Dedicated on-site project managers who know what they are doing

◇ Follow-up site visits/inspections as per agreement w client & clients' preferred specialty guests

◇ Utilize upscale local workforce where possible

◇ Use of local materials and suppliers to reduce transport and import costs and minimize carbon footprint and uplift communities where possible

◇ Proven packaging/crating methods to minimize damages

MAINTENANCE SERVICE/TRAINING

◇ Full maintenance service with regular on-site inspections to maintain health, hygiene, safety and operational standards, preserve camp aesthetics and extend its lifespan and ROI

◇ For camp managers and staff who prefer to handle it in-house, we offer the necessary training and reference manual covering vital daily, monthly and annual maintenance checklists and procedures

DESIGNED TO IMPRESS

◇ Walk through our on-site LUXVILLA OUTBackEDGES HighCamp and experience our magnificent tents 'live up close'

◇ Take a virtual tour of the fascinating factory & watch the tent creation process from a simple sketch to finished product – the video link is available at the following link

www.outbackedges.com





LUXURY
tent range

BALINES

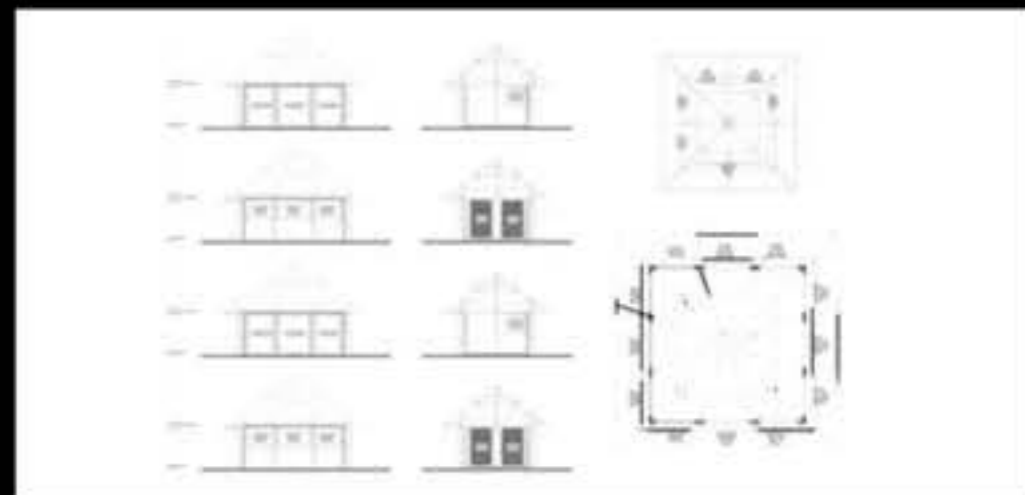
luxury tent

STANDARD FEATURES

- ◆ Mild steel frame
- ◆ Canvas flysheet
- ◆ Canvas tent body – 550 GSM ripstop canvas
- ◆ Bull denim inner ceiling
- ◆ Bull denim curtains
- ◆ Square tubing, body poles and webbing straps

ADDED FEATURES

- ◆ Powder coated, galvanised or stainless steel frame
- ◆ Wooden or aluminium doors





JUBANOE

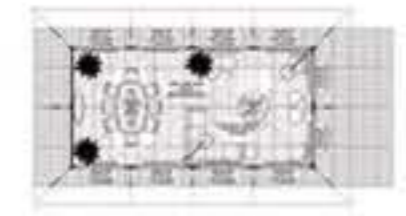
luxury tent

STANDARD FEATURES

- ◆ Mild steel frame
- ◆ Canvas flysheet
- ◆ Canvas tent body – 550 GSM ripstop canvas
- ◆ Bull denim inner ceiling
- ◆ Bull denim curtains
- ◆ Square tubing, body poles and webbing straps

ADDED FEATURES

- ◆ Powder coated, galvanised or stainless steel frame
- ◆ Wooden or aluminium doors
- ◆ Shade-net flysheet



ABUBAIJAH

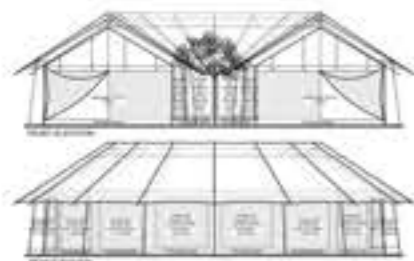
luxury tent

STANDARD FEATURES

- ◆ Mild steel frame
- ◆ PVC flysheet
- ◆ Shade-net flysheet
- ◆ Canvas tent body – 550 GSM ripstop canvas
- ◆ Bull denim inner ceiling
- ◆ Bull denim curtains
- ◆ Square tubing, body poles and webbing straps

ADDED FEATURES

- ◆ Powder coated, galvanised or stainless steel frame
- ◆ Wooden or aluminium doors





JAHMON

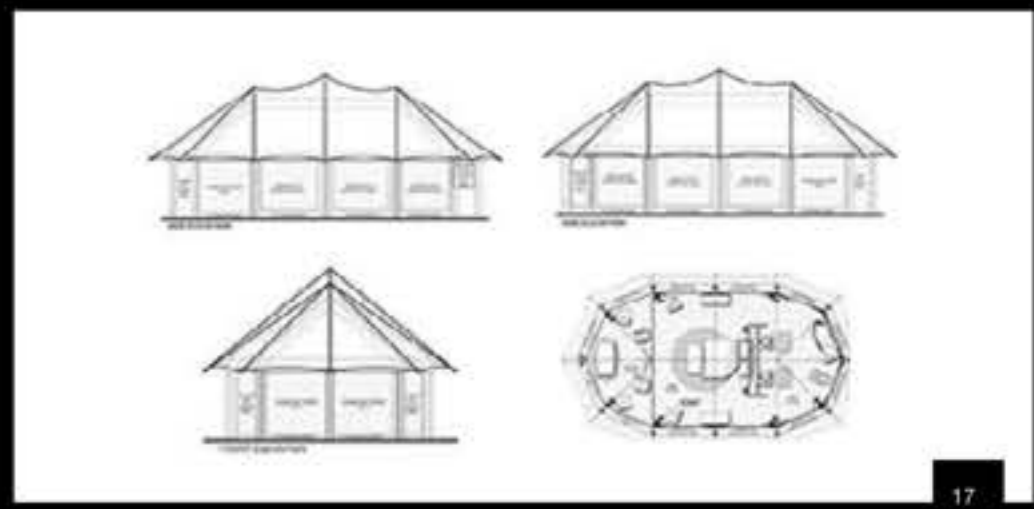
luxury tent

STANDARD FEATURES

- ◆ Mild steel frame
- ◆ PVC flysheet
- ◆ Shade-net flysheet
- ◆ Canvas tent body – 550 GSM ripstop canvas
- ◆ Bull denim inner ceiling
- ◆ Bull denim curtains
- ◆ Square tubing, body poles and webbing straps

ADDED FEATURES

- ◆ Powder coated, galvanised or stainless steel frame
- ◆ Wooden or aluminium doors



JAVABON

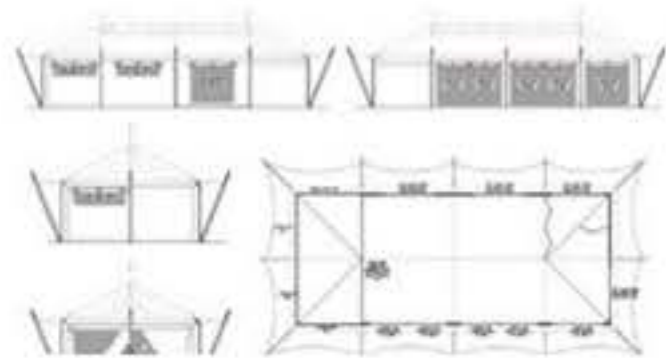
luxury tent

STANDARD FEATURES

- ◆ Mild steel frame
- ◆ Wooden outrigger poles with sisal rope
- ◆ Canvas flysheet – 550 GSM ripstop canvas
- ◆ Canvas tent body – 550 GSM ripstop canvas
- ◆ Bull denim inner ceiling
- ◆ Bull denim curtains
- ◆ Square tubing, body poles and webbing straps

ADDED FEATURES

- ◆ Powder coated, galvanised or stainless steel frame
- ◆ Wooden or aluminium doors
- ◆ Shade-net flysheet





MAHIMBE

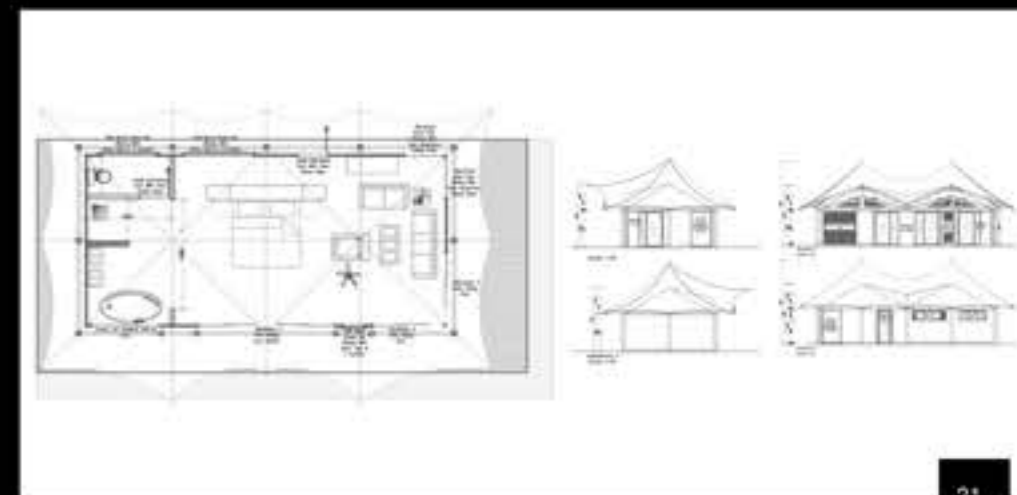
luxury tent

STANDARD FEATURES

- ◆ Mild steel frame
- ◆ Ferrari PVC flysheet
- ◆ Canvas tent body – 550 GSM ripstop canvas
- ◆ Bull denim inner ceiling
- ◆ Bull denim curtains
- ◆ Square tubing, body poles and webbing straps

ADDED FEATURES

- ◆ Timber beams
- ◆ Powder coated, galvanised or stainless steel frame
- ◆ Wooden or aluminium doors



SERENGETI

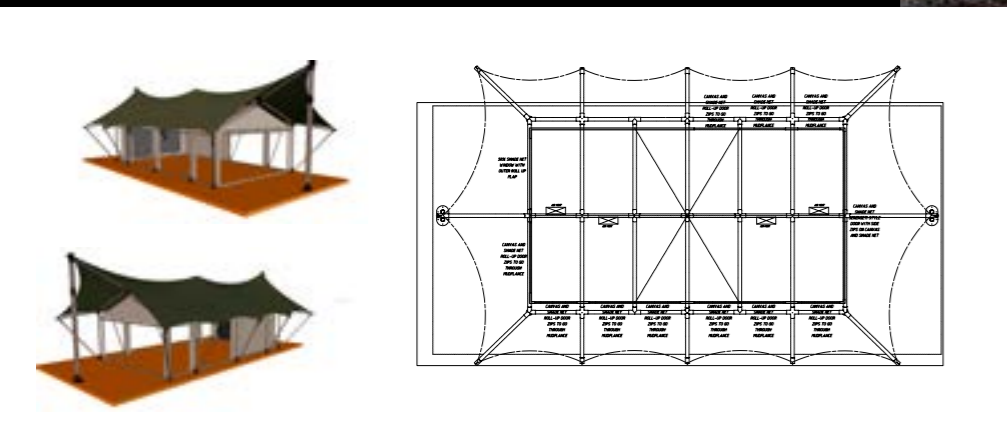
luxury tent

STANDARD FEATURES

- ◆ Complete turned wooden pole structure
- ◆ Mild steel corner fittings and foot brackets
- ◆ Wooden outriggers
- ◆ Canvas flysheet – 550 GSM ripstop canvas
- ◆ Canvas tent body – 550 GSM ripstop canvas
- ◆ Bull denim inner ceiling
- ◆ Bull denim curtains
- ◆ Square tubing, body poles and webbing straps

ADDED FEATURES

- ◆ Powder coated, galvanised or stainless steel fittings
- ◆ Wooden or aluminium doors
- ◆ Shade-net flysheet





SHAKON

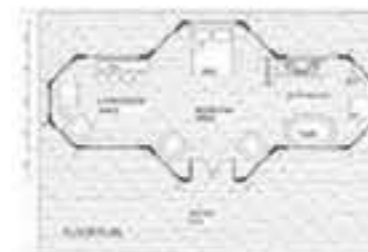
luxury tent

STANDARD FEATURES

- ◆ Mild steel frame
- ◆ PVC flysheet
- ◆ Shade-net flysheet
- ◆ Canvas tent body – 550 GSM ripstop canvas
- ◆ Bull denim inner ceiling
- ◆ Bull denim curtains
- ◆ Square tubing, body poles and webbing straps

ADDED FEATURES

- ◆ Powder coated, galvanised or stainless steel frame
- ◆ Wooden or aluminium doors



SPROUL

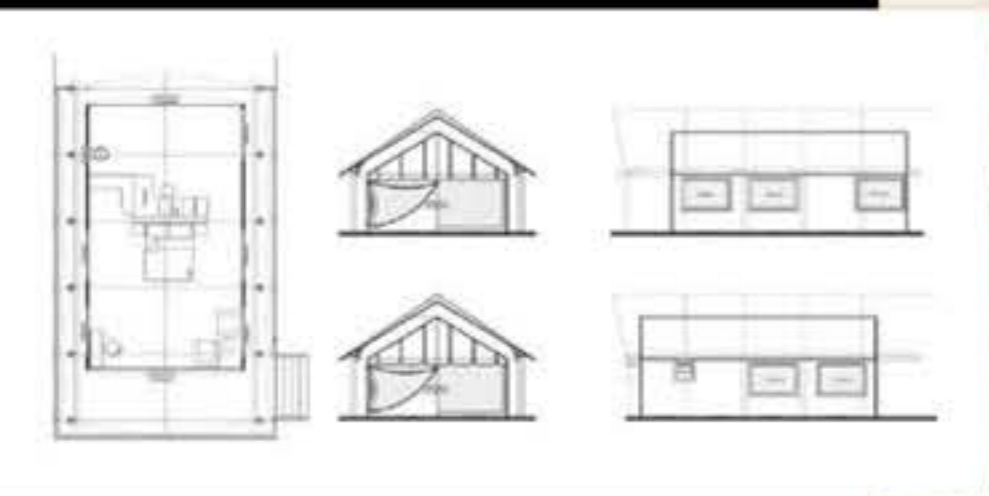
luxury tent

STANDARD FEATURES

- ◆ Mild steel frame to fit onto customer's gum pole structure
- ◆ PVC flysheet
- ◆ Shade-net flysheet
- ◆ Canvas tent body – 550 GSM ripstop canvas
- ◆ Bull denim inner ceiling
- ◆ Bull denim curtains
- ◆ Square tubing, body poles and webbing straps

ADDED FEATURES

- ◆ Powder coated, galvanised or stainless steel frame
- ◆ Wooden or aluminium doors



SHAKWANE

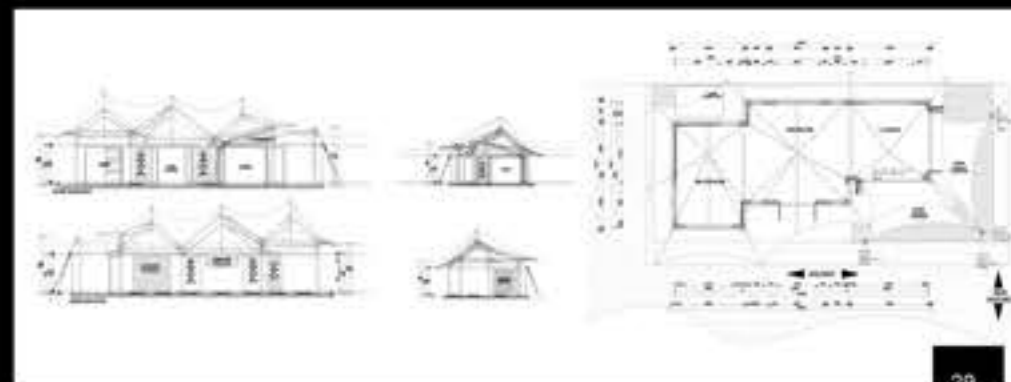
luxury tent

STANDARD FEATURES

- ◆ Mild steel frame
- ◆ Ferrari PVC flysheet
- ◆ Two PVC awnings
- ◆ Canvas tent body – 550 GSM ripstop canvas
- ◆ Bull denim inner ceiling
- ◆ Bull denim curtains
- ◆ Square tubing, body poles and webbing straps

ADDED FEATURES

- ◆ Timber beams
- ◆ Powder coated, galvanised or stainless steel frame
- ◆ Wooden or aluminium doors



MERUVA tent range



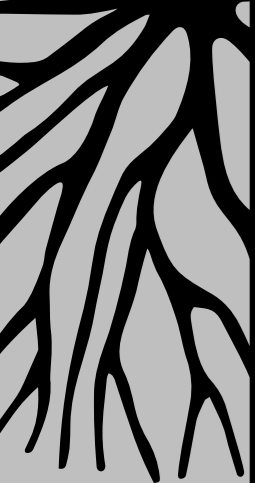
This range is more of what you want, for less. Invest in the Meru Range of standard A-style framed tents. They're also an ideal solution for mobile camps and each tent can be customised to meet most requirements.

There are three standard frame sizes (frame length with flysheet for each tent) with all three tents available in three body sizes (any tent body size fits onto any frame):

| FRAME SIZES | BODY SIZES |
|------------------|----------------|
| ◆ 4 Leg – 6,3 m | ◆ 3,5 x 3,5 m |
| ◆ 5 Leg – 8,4 m | ◆ 4,68 x 3,5 m |
| ◆ 6 Leg – 10,5 m | ◆ 5,22 x 3,5 m |

STANDARD FEATURES

- ◆ Mild steel frame
- ◆ Double flysheet (PVC and shade-net)
- ◆ Heavy duty canvas inner tent
- ◆ Serengeti style (zipper) doors
- ◆ Option of adding hard doors
- ◆ Large shade-net windows with inner and outer flaps
- ◆ Optional bull denim inner liner and curtains
- ◆ Covered outside veranda
- ◆ Bedroom
- ◆ Optional en-suite canvas bathroom or built-on at the back
- ◆ Kitchenette
- ◆ Colour canvas of your choice, subject to a specific minimum quantity
- ◆ Full PVC floor for mobile tents



OUR RANGE OF STANDARD AND FLAGSHIP LUXURY SAFARI TENTS CAN BE CUSTOMISED TO YOUR EXACT SPECIFICATIONS AND REQUIREMENTS.

CHOOSE FROM OUR VARIOUS FEATURES TO CUSTOMISE YOUR TENTED ACCOMMODATION

- ◆ En-suite ablution facilities
- ◆ Tailored canvas bathroom with gauze roof
- ◆ Mild steel frame, option to fit onto your existing structure
- ◆ Square tubing
- ◆ PVC/shade-net flysheet
- ◆ Serengeti-style door (front/rear/both)
- ◆ Roll-up front door



STANDARD

luxury tent range

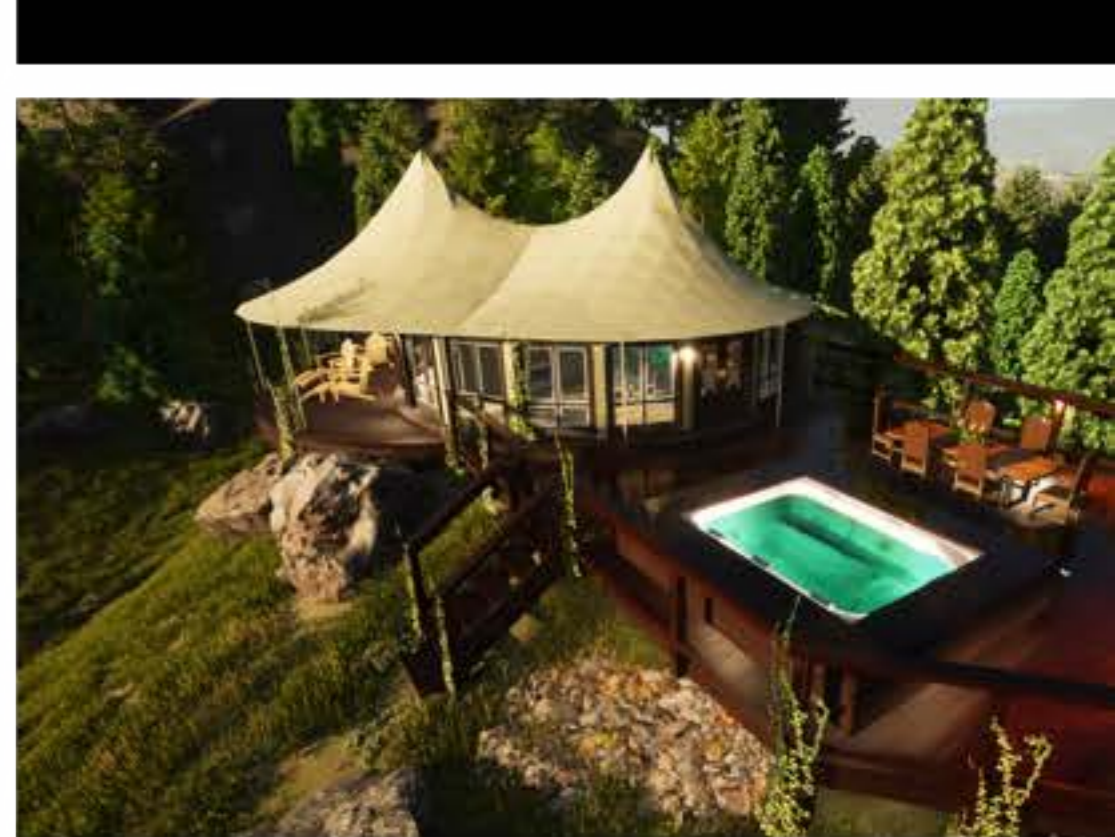




glimpse of luxury
PORTFOLIO











Tel: 602.314.0413 | Fax: 928.282.5140
OUTBACKEDGES®
c/o Western Minerals & Ores [WMO]
P.O. Box 1249
Sedona, AZ 86339

ARISE® @ ECOPLEX® &
LUXVILLARESORT® @ OUTBACKEDGES
® are trade & services marks of
ESCHELON®

An OUTBACKEDGES Organization.
Delivering Adventures & Safaris' -
Discovery - Exploration & Innovation
A Platform of
EschelonCapitalIntelligence
@Interchange

WWW.OUTBACKEDGES.COM

