

FAST BACK

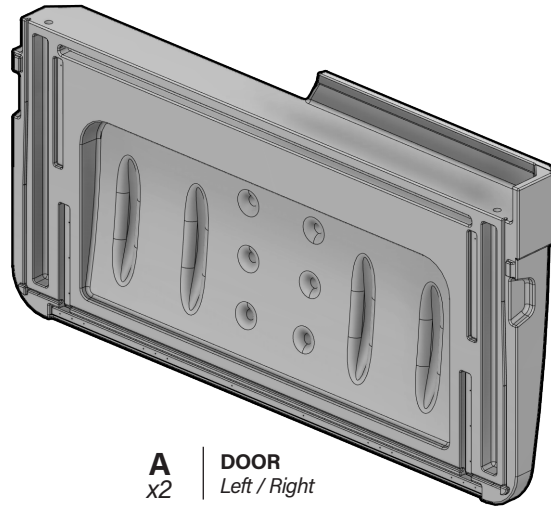
T R U C K B E D C O V E R S



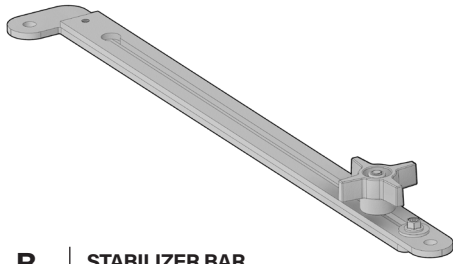
Installation Instructions

THIS INSTRUCTION BOOKLET CONTAINS **IMPORTANT** SAFETY INFORMATION.
PLEASE READ AND KEEP FOR FUTURE REFERENCE.

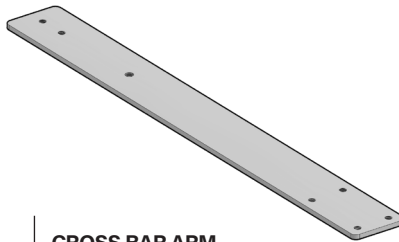
Parts & Hardware



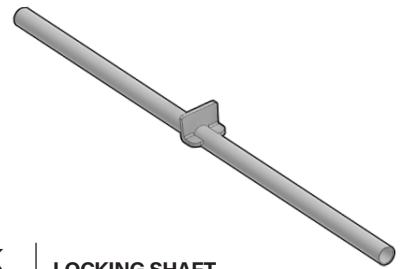
A | DOOR
x2 | Left / Right



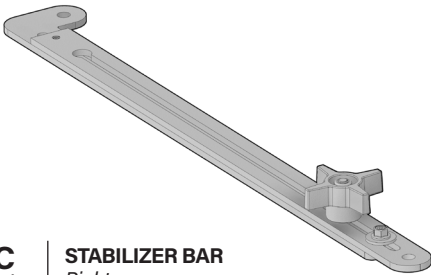
B | STABILIZER BAR
x1 | Left



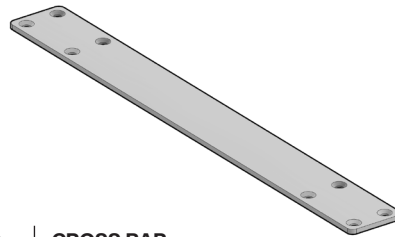
F | CROSS BAR ARM
x2



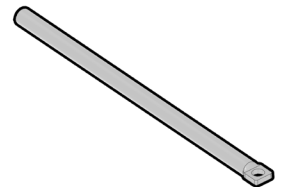
K | LOCKING SHAFT
x1



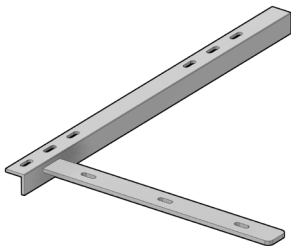
C | STABILIZER BAR
x1 | Right



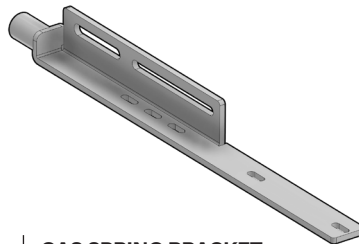
G | CROSS BAR
x1 | Middle



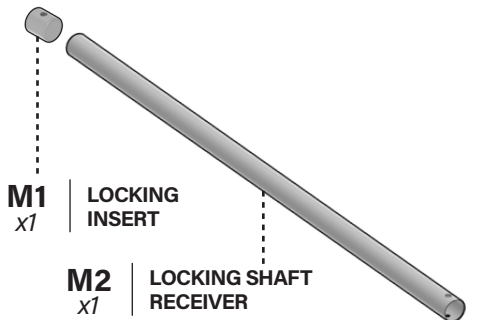
L | LOCKING SHAFT GUIDE
x1



D | HINGE SUPPORT BAR
x1 | Left

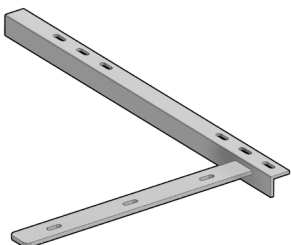


H | GAS SPRING BRACKET
(x1) | Left

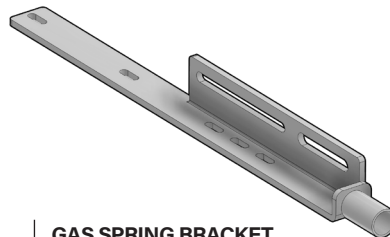


M1 | LOCKING INSERT
x1

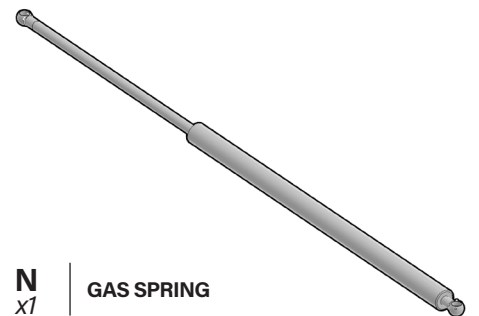
M2 | LOCKING SHAFT RECEIVER
x1



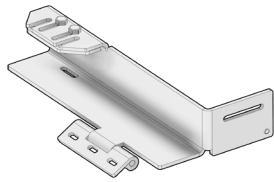
E | HINGE SUPPORT BAR
x1 | Right



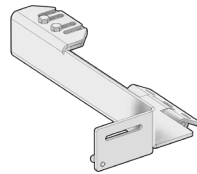
J | GAS SPRING BRACKET
x1 | Right



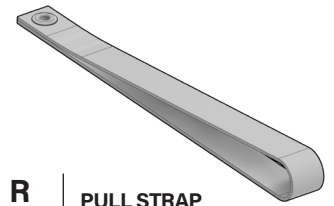
N | GAS SPRING
x1



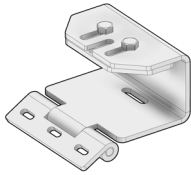
P | FRONT HINGE & SLIDE PLATE
x1 | *Left*



Q | FRONT HINGE & SLIDE PLATE
x1 | *Right*



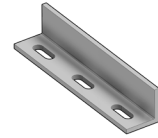
R | PULL STRAP
x2



S | REAR HINGE & SLIDE PLATE
x2

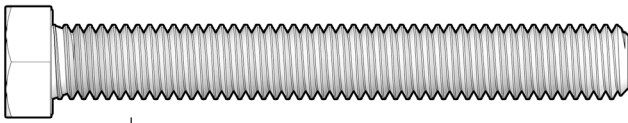


T | CAB SUPPORT BRACKET
x2

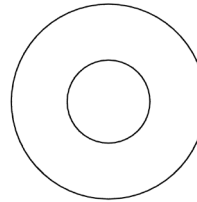


U | REAR HINGE SPACER
x2

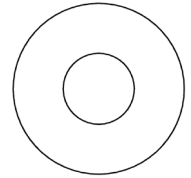
Parts & Hardware



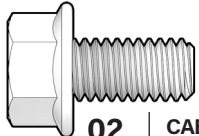
01 | HINGE MOUNT BOLT
x6 | 3/8"-16 x 3"



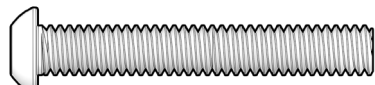
07 | FLAT WASHER
x6 | 3/8"



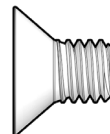
08 | FLAT WASHER
x6 | 5/16"



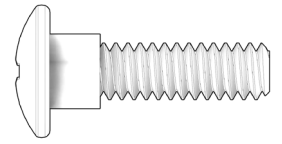
02 | CAB SUPPORT BOLT
x4 | 5/16"-18 x 5/8"



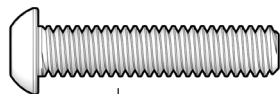
03 | LOCK SHAFT RECEIVER BOLT
x1 | 1/4"-20 x 1 - 3/4"



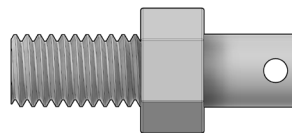
09 | CROSS BAR BOLT
x8 | 5/16"-18 x 1/2"



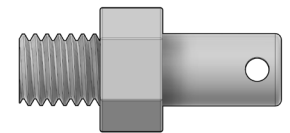
10 | PULL STRAP BOLT
x2 | 5/16" - x 3/4"



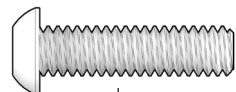
04 | LOCK SHAFT GUIDE BOLT
x1 | 1/4"-20 x 1 1/4"



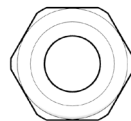
11 | SPRING BRACKET BOLT
x2 | 1 1/2"



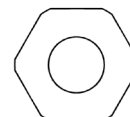
12 | SPRING BAR BOLT
x2 | 1 3/8"



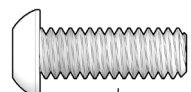
05 | HINGE BRACKET BOLT
x12 | 1/4"-20 x 1"



13 | NYLON LOCK NUT
x4 | 3/8"-18



14 | JAM NUT
x6 | 3/8"-18



06 | HINGE BRACKET BOLT
x20 | 1/4"-20 x 3/4"



15 | COTTER PIN
x4 | 2.5 mm

Safety Information

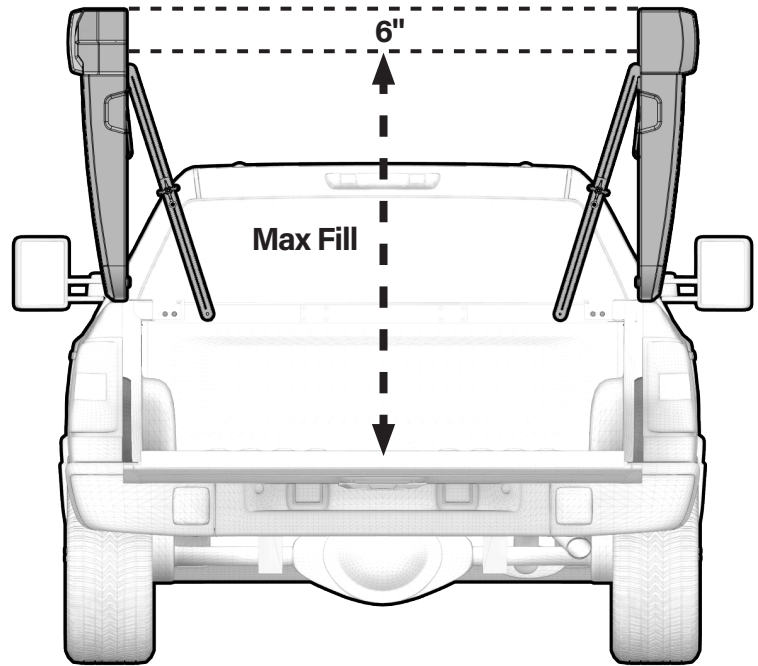
OBSERVE ALL STATEMENTS AND WARNINGS TO REDUCE THE LIKELIHOOD OF SERIOUS OR FATAL INJURY.

⚠ WARNING
DO NOT overload. Follow all vehicle manufacturer's limitations.

⚠ WARNING
DO NOT Load cargo above top of doors. Cargo must be 6" below top of door.

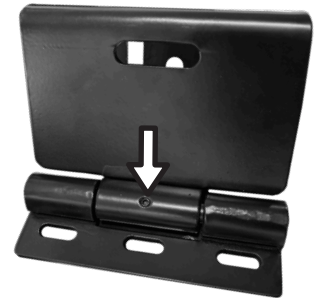
⚠ WARNING
ALWAYS fully secure cargo when doors are in open position.

⚠ WARNING
DO NOT exceed 55 mph when doors are in open position.

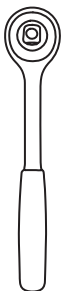


Read Before Installation

1. Two people required when mounting doors.
2. It is recommended to work on an elevated flat surface.
3. It is recommended to cover truck bed and tailgate with flattened cardboard during mounting and if using bed as elevated work surface.
4. Fastener images are to printed scale, lay on page to help identify fasteners.
5. Tighten hinge pin holder screws with Allen wrench to ensure it is fully secured.



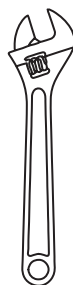
Tools Required



Socket Wrench



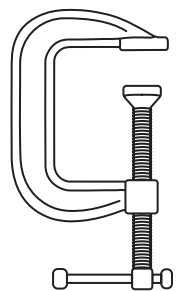
5/32 Allen Wrench



Crescent Wrench

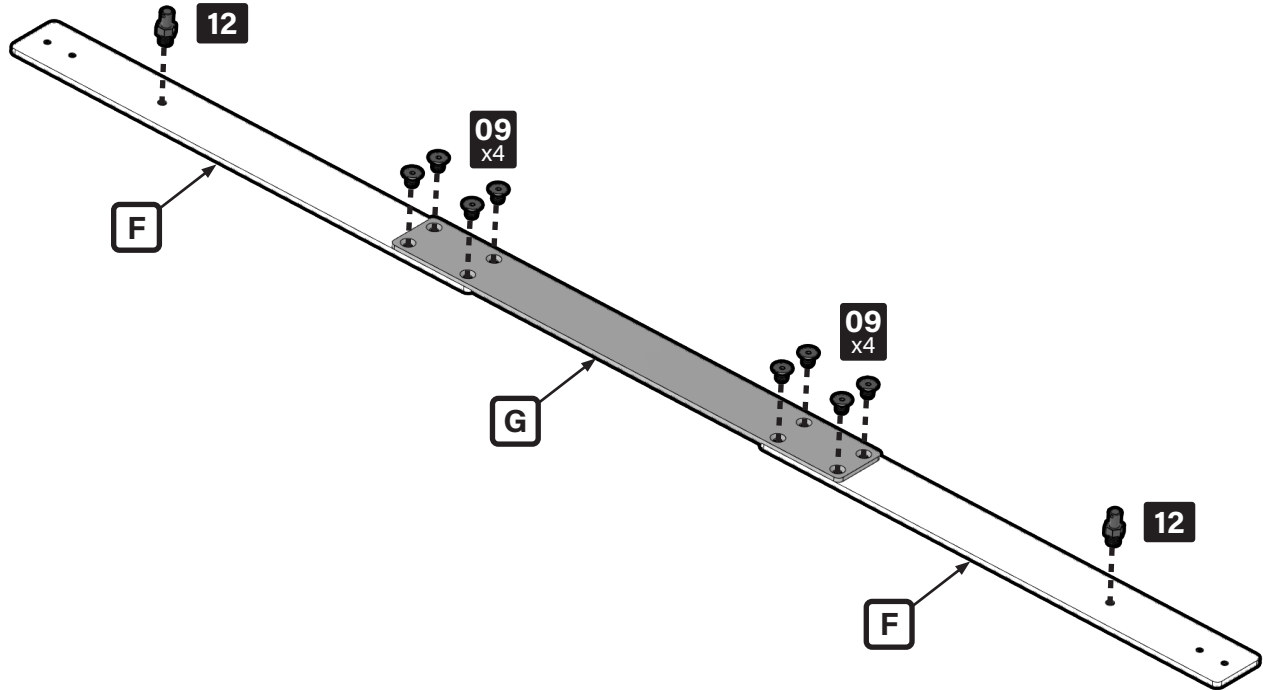
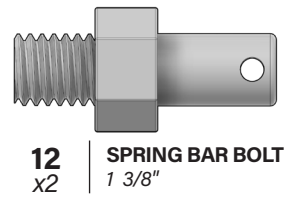
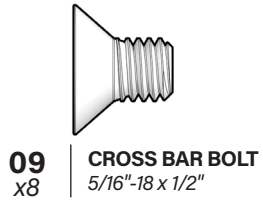


Pliers

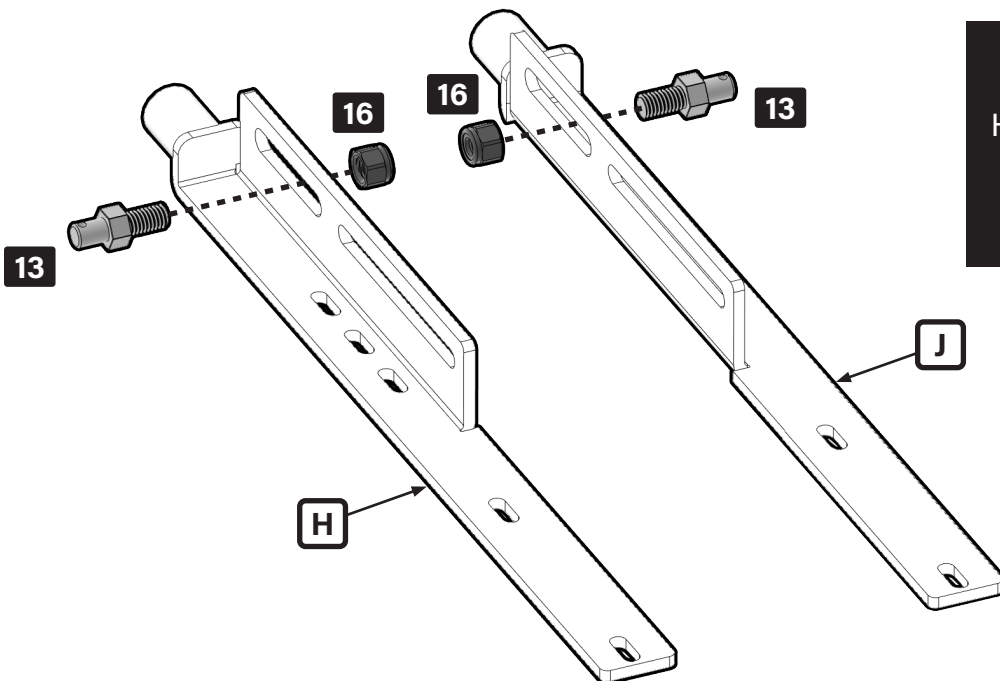
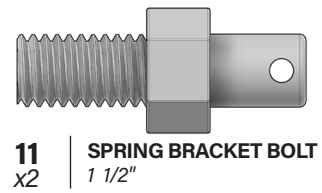


Clamps

Step 1

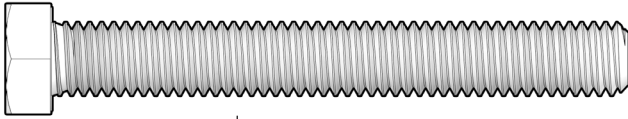


Step 2

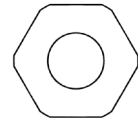


DO NOT fully tighten.
Hardware should move freely in slots
to allow door adjustment during
mounting and alignment steps.

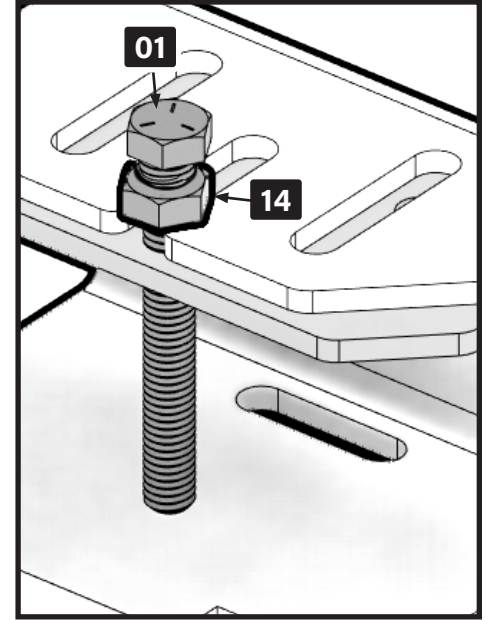
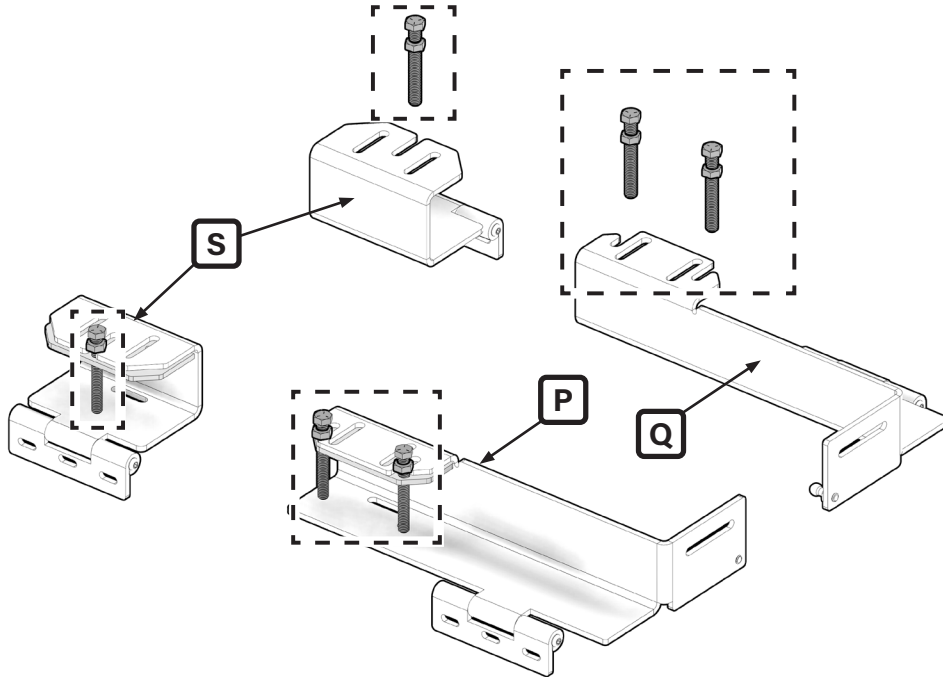
Step 3



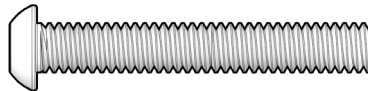
01 | HINGE MOUNT BOLT
X6 | 3/8"-16 x 3"



14 | JAM NUT
X6 | 3/8"-18

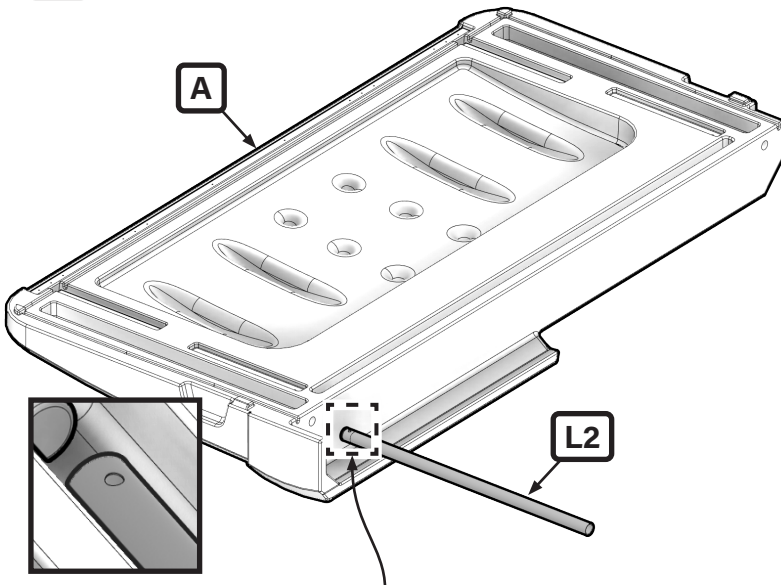


Step 4



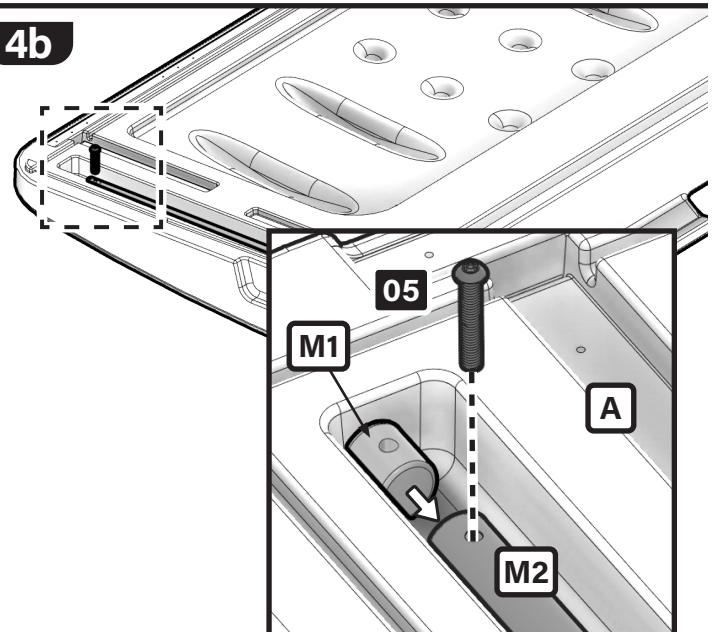
03 | LOCK SHAFT RECEIVER BOLT
X1 | 1/4"-20 x 1 - 3/4"

4a



NOTE:
Hole end of Locking Shaft Receiver ('M2') must go through hole first.

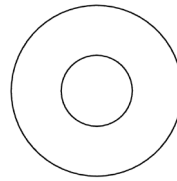
4b



NOTE:
Ensure Receiver Insert ('M1') is used to prevent over-tightening.

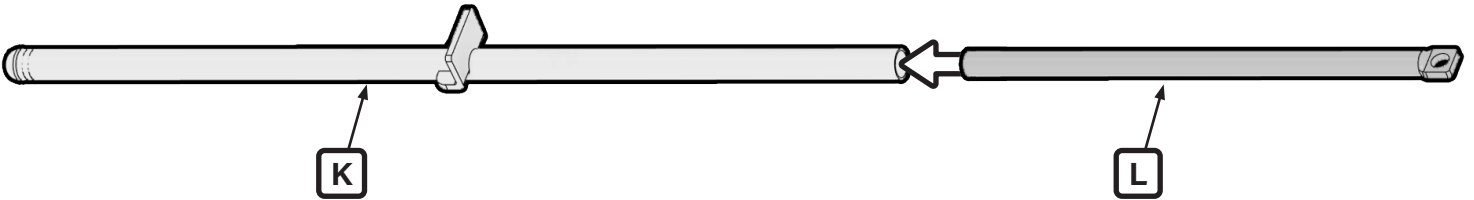
Step 5

04
x1
LOCK SHAFT GUIDE BOLT
1/4"-20 x 1 1/4"

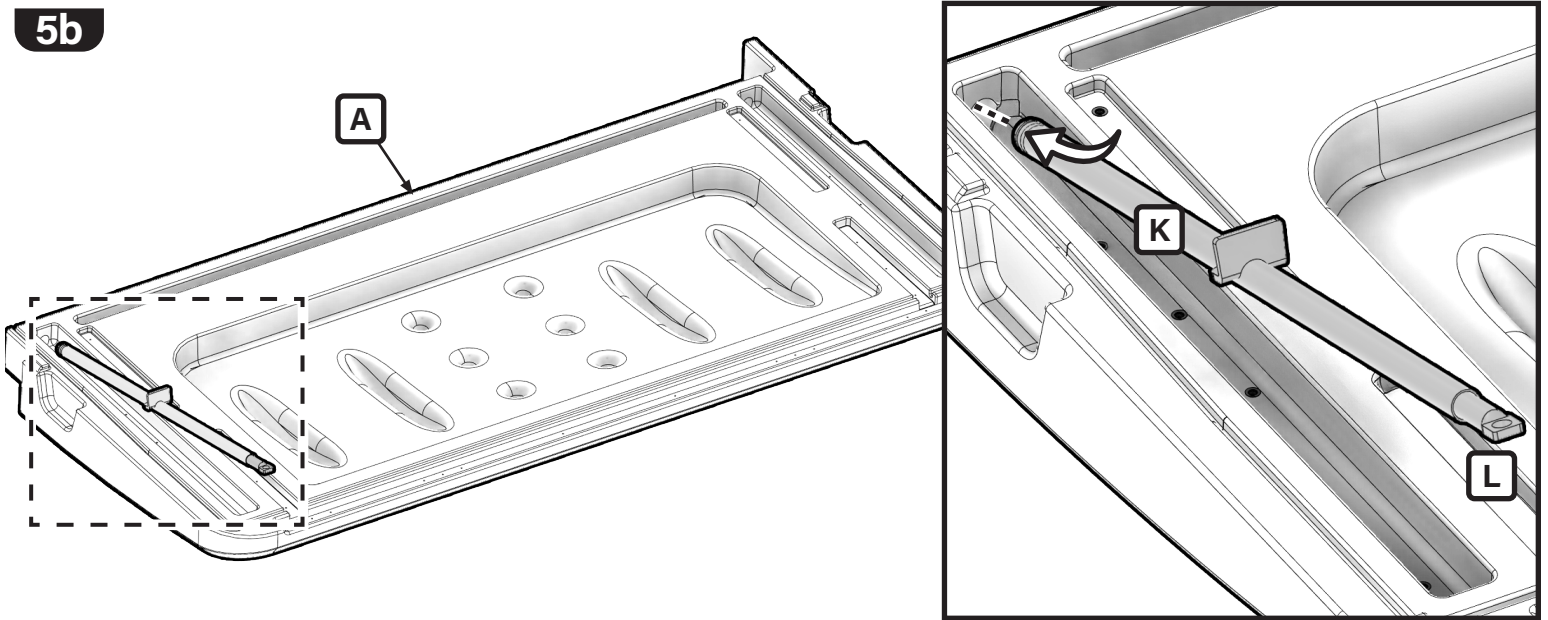


08
x2
FLAT WASHER
5/16"

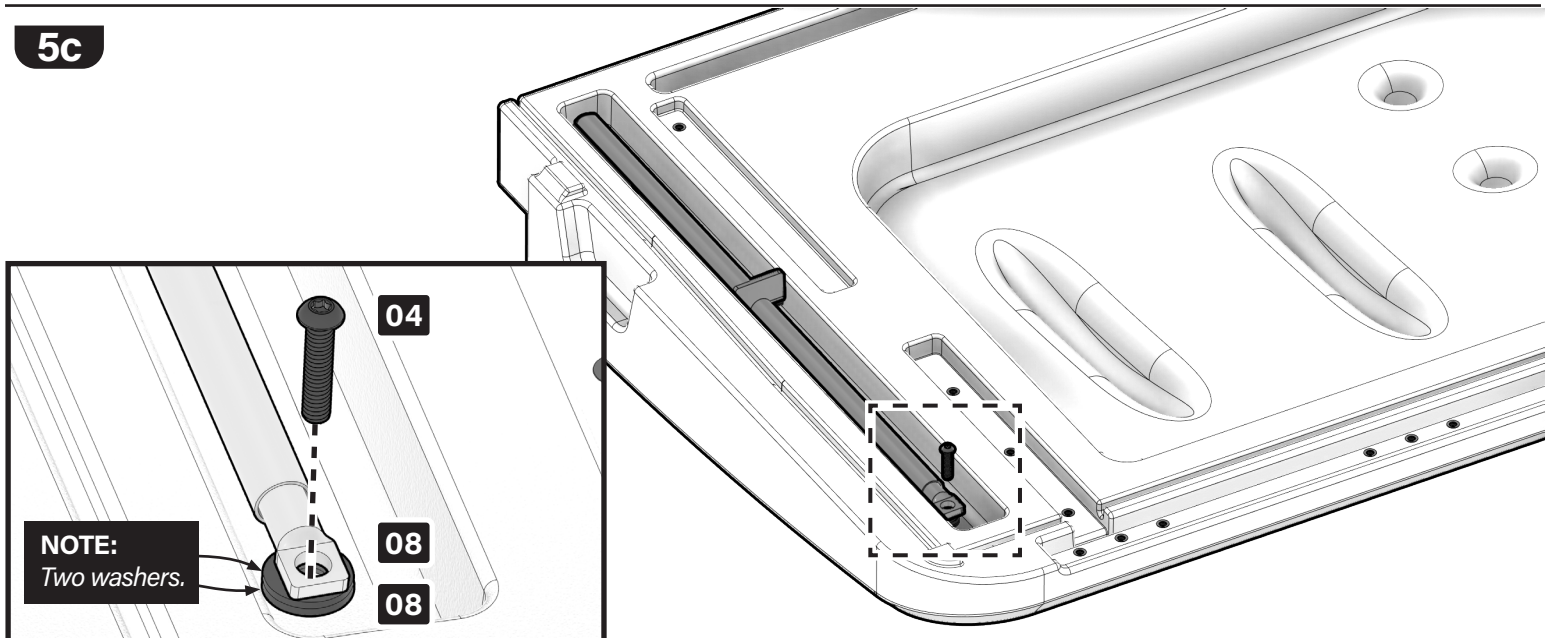
5a



5b



5c



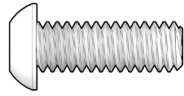
NOTE:
Two washers.

04

08

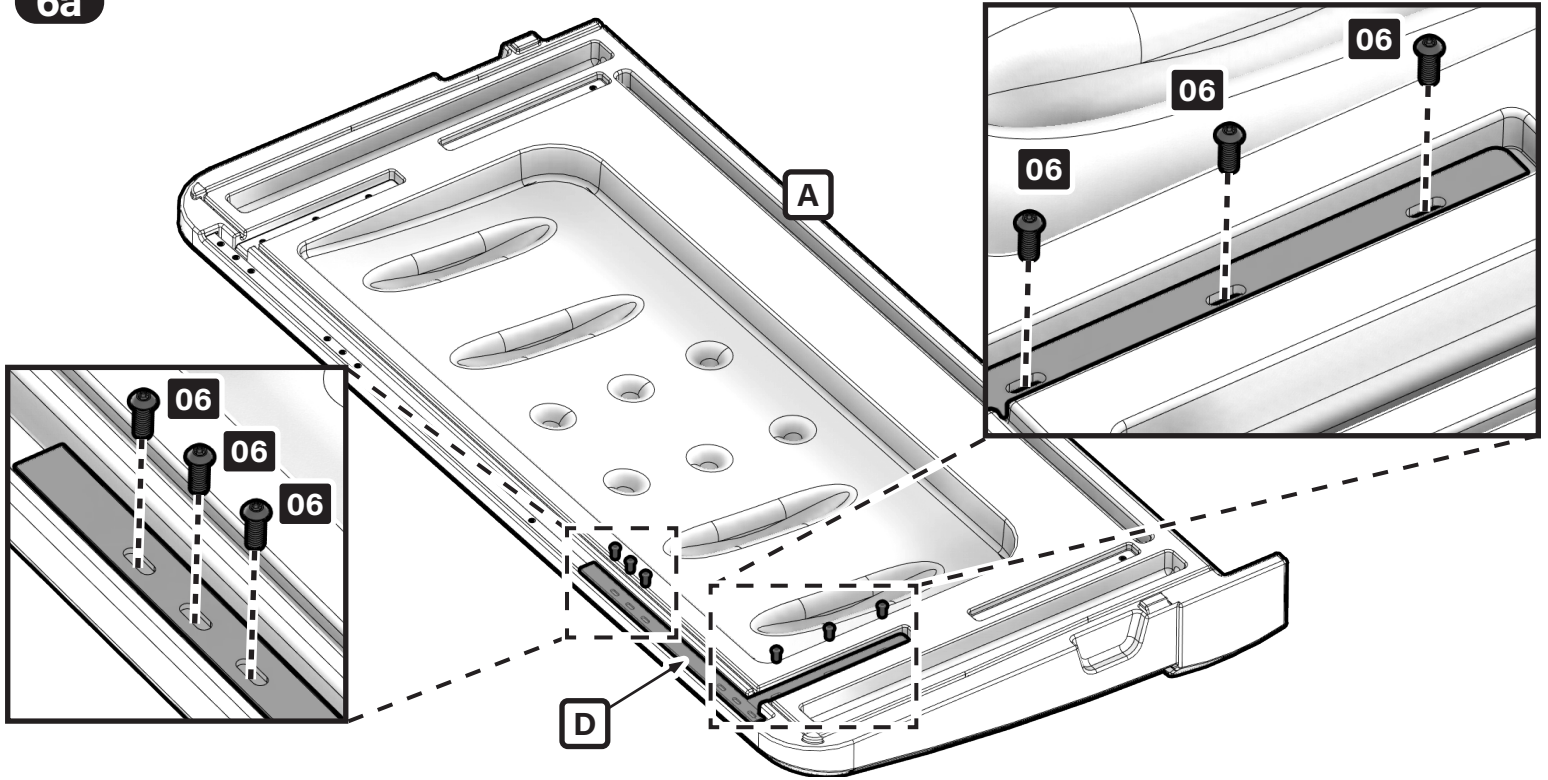
08

Step 6

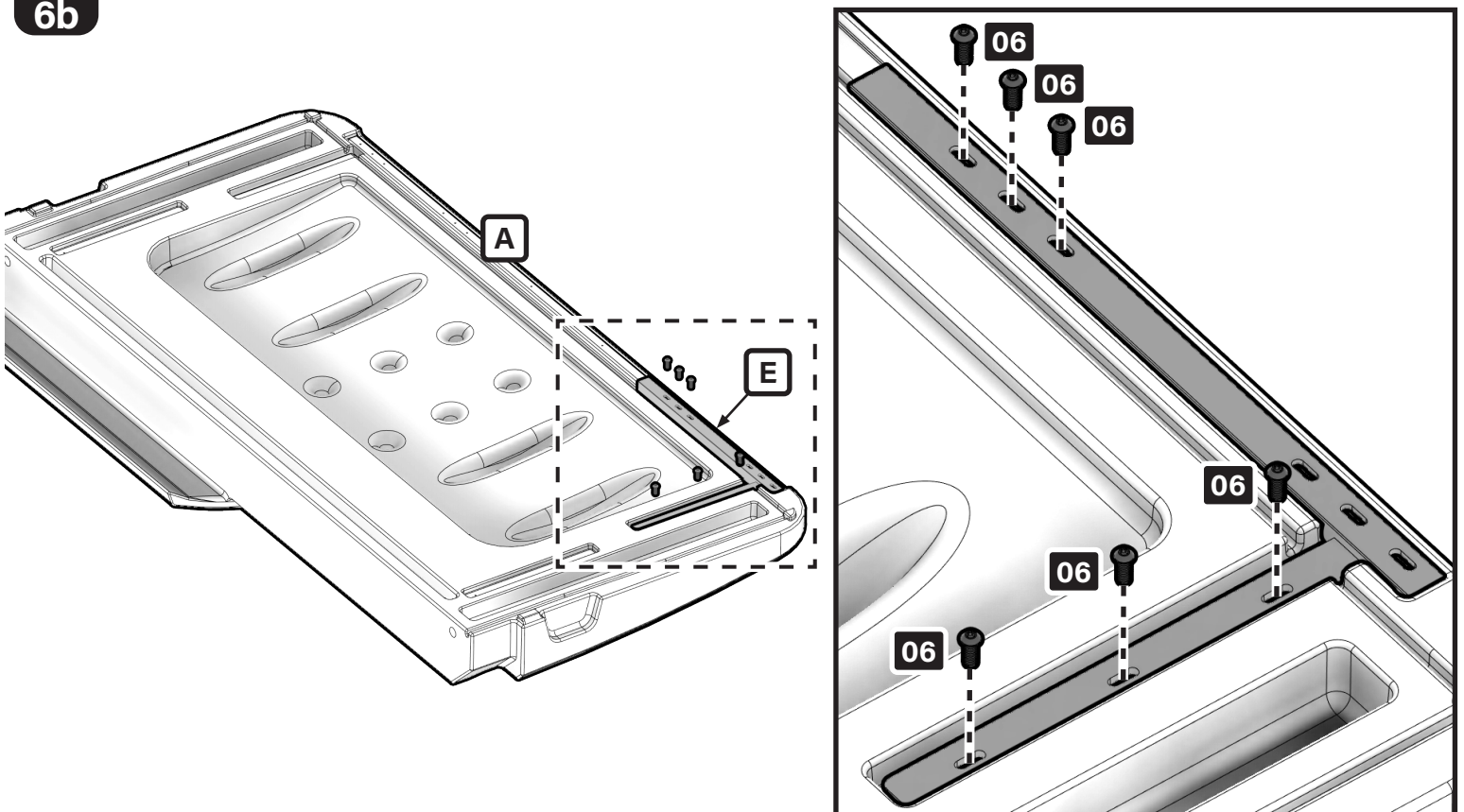


06 | HINGE BRACKET BOLT
x12 | 1/4"-20 x 3/4"

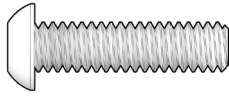
6a



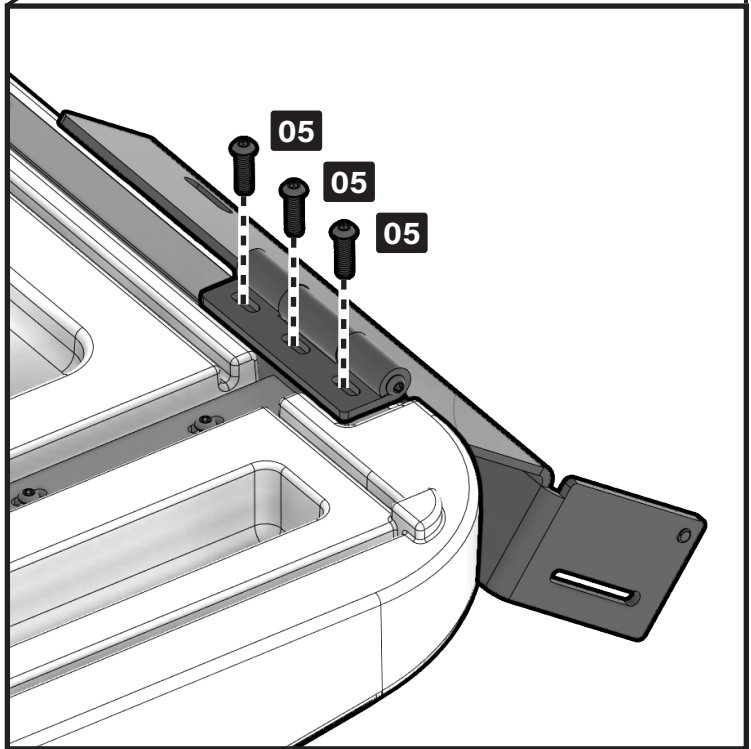
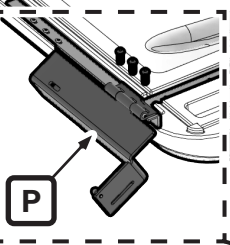
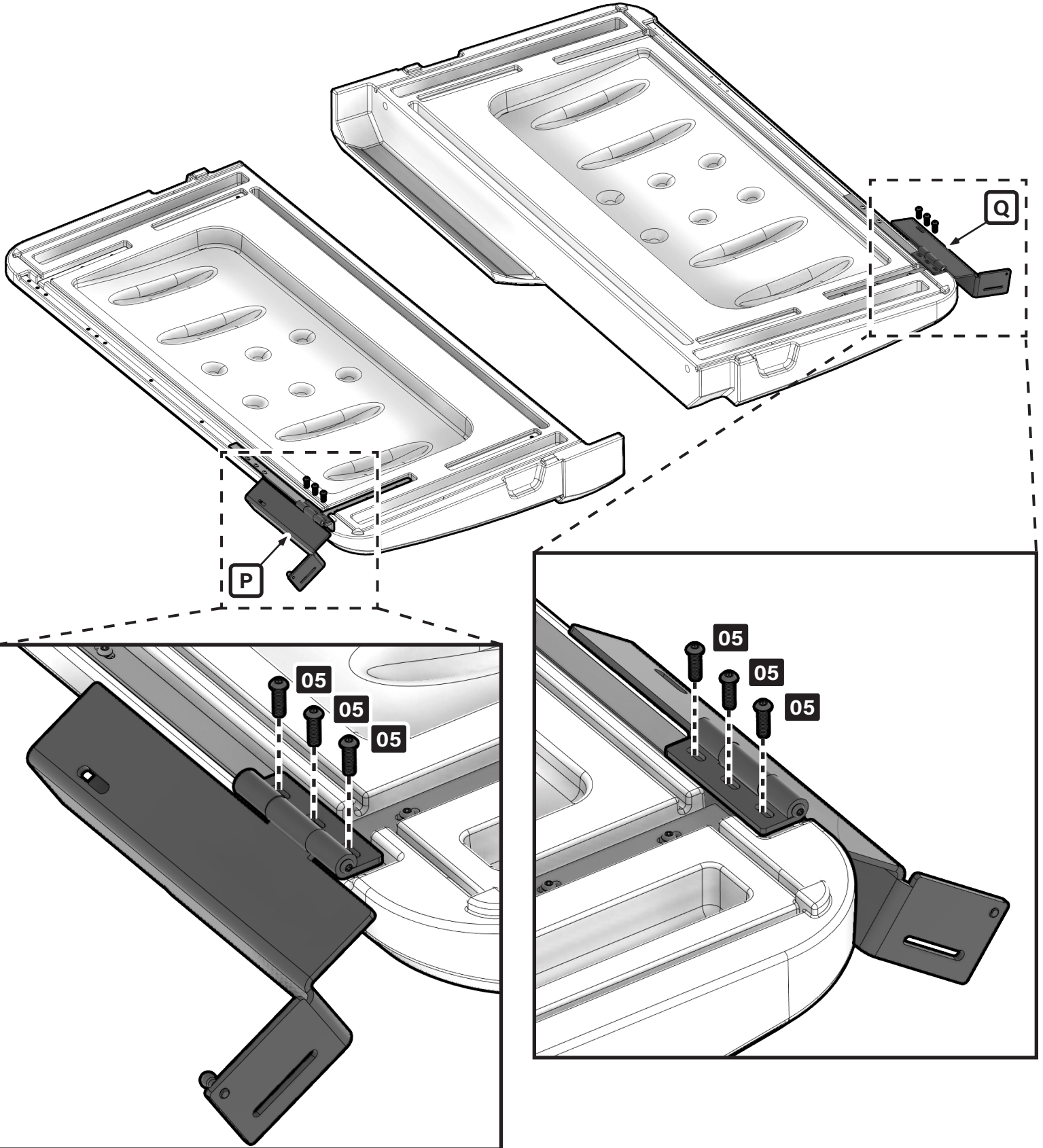
6b



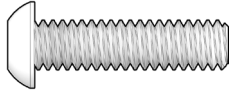
Step 7



05 | HINGE BRACKET BOLT
x6 | 1/4"-20 x 1"

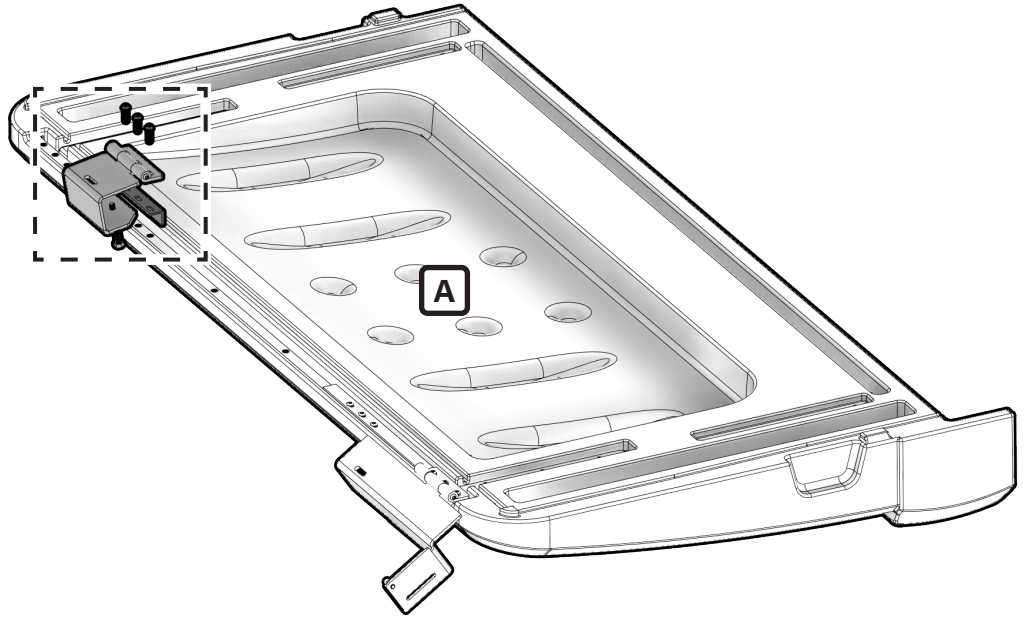
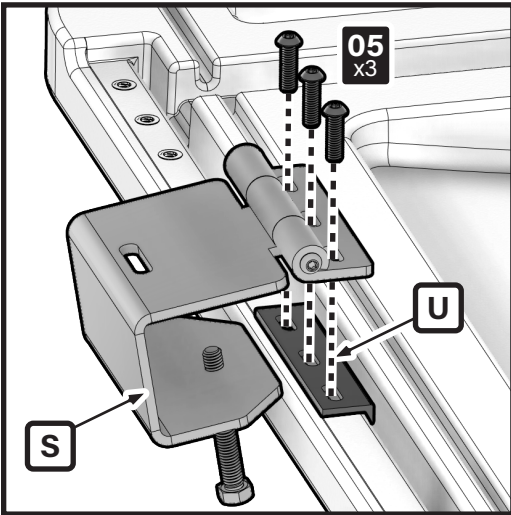


Step 8

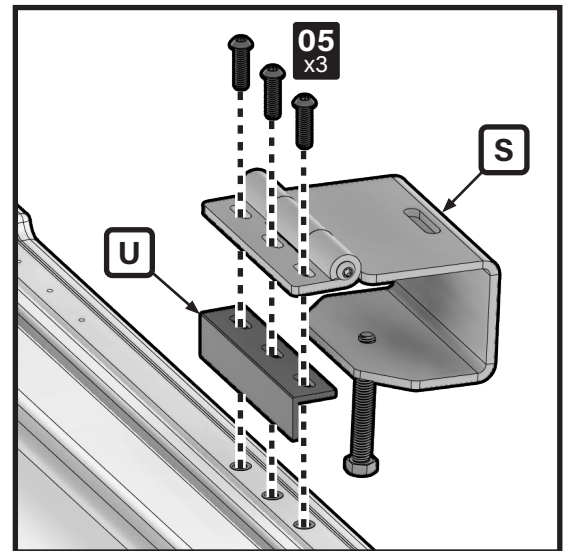
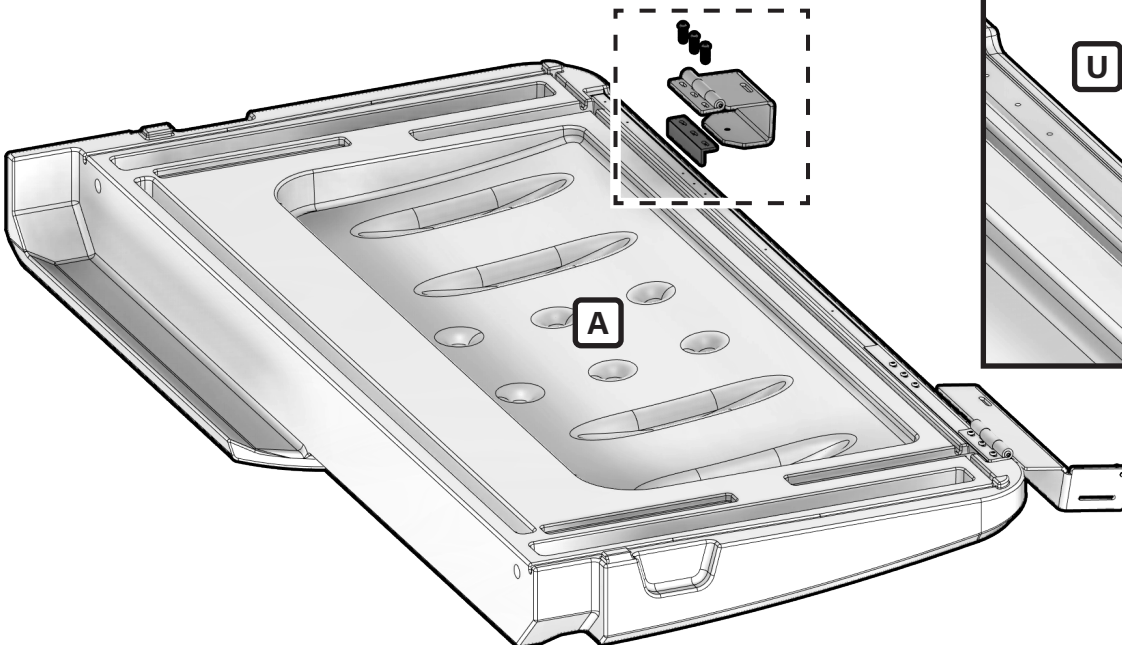


05 | HINGE BRACKET BOLT
x6 | 1/4"-20 x 1"

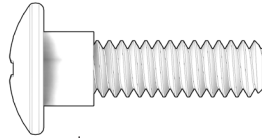
8a



8b

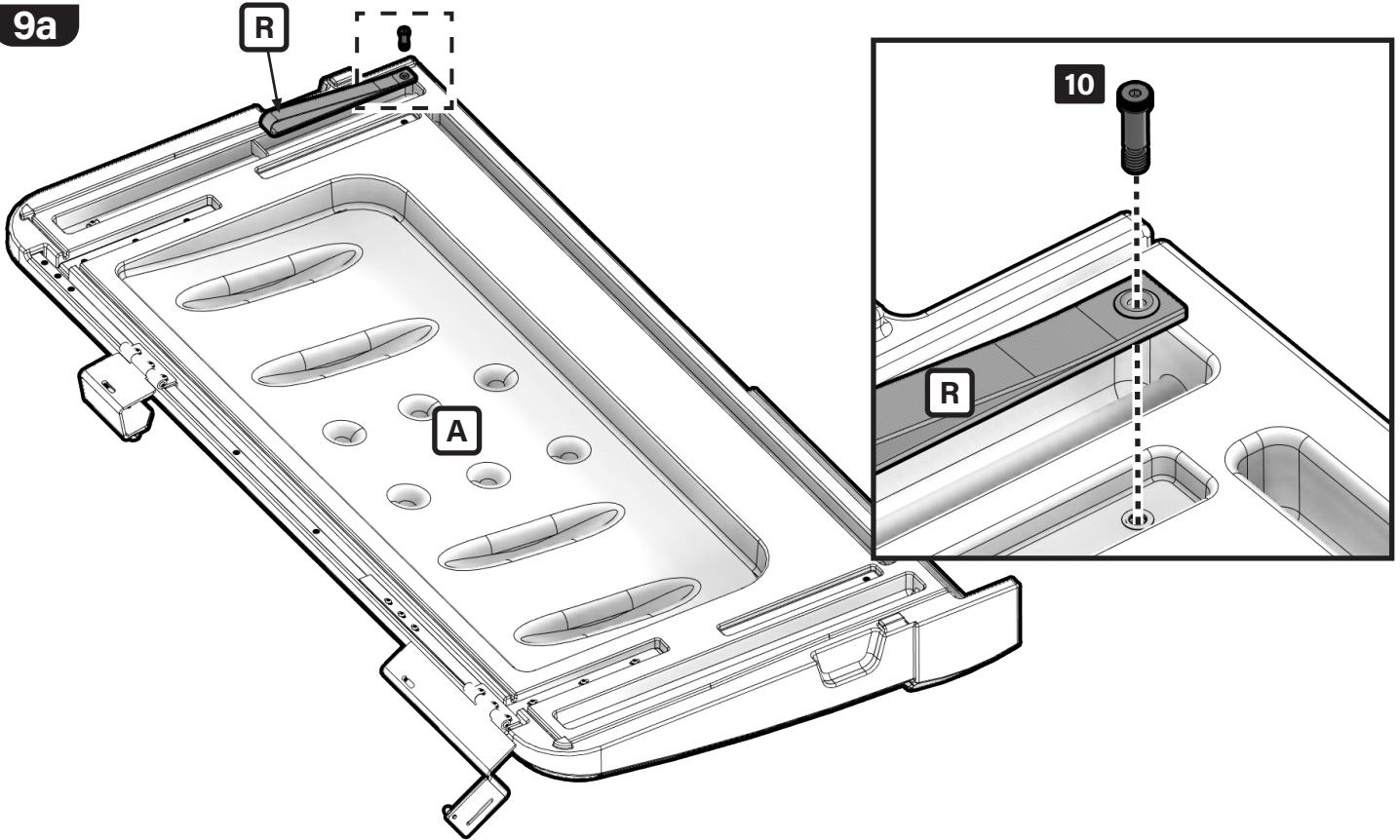


Step 9

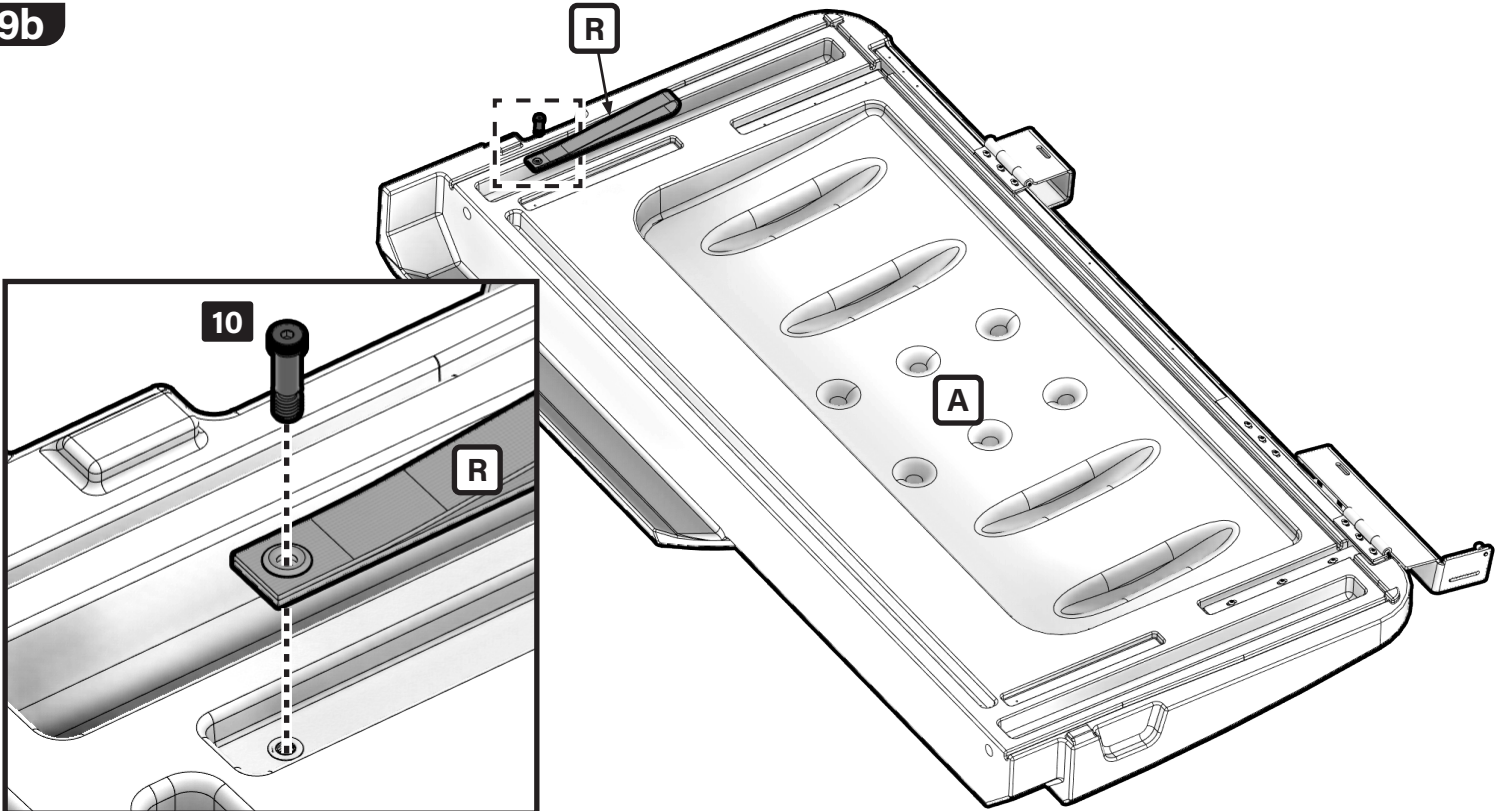


10 | PULL STRAP BOLT
x2 | 5/16" - x 3/4"

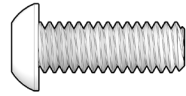
9a



9b



Step 10

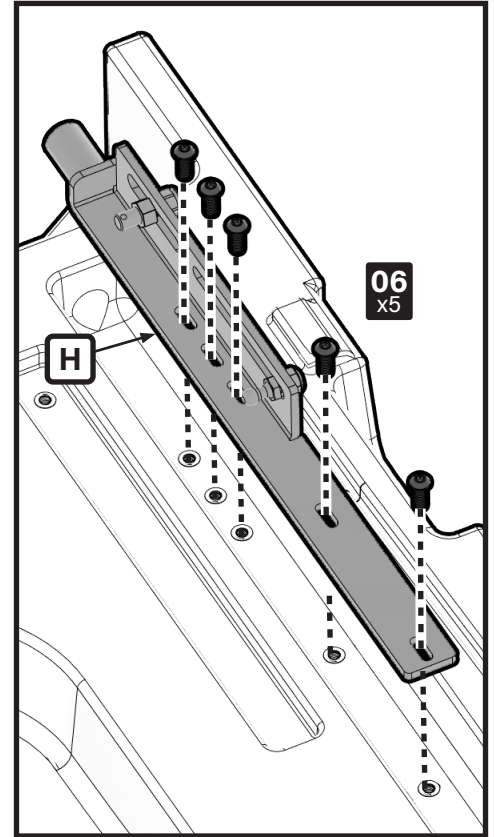
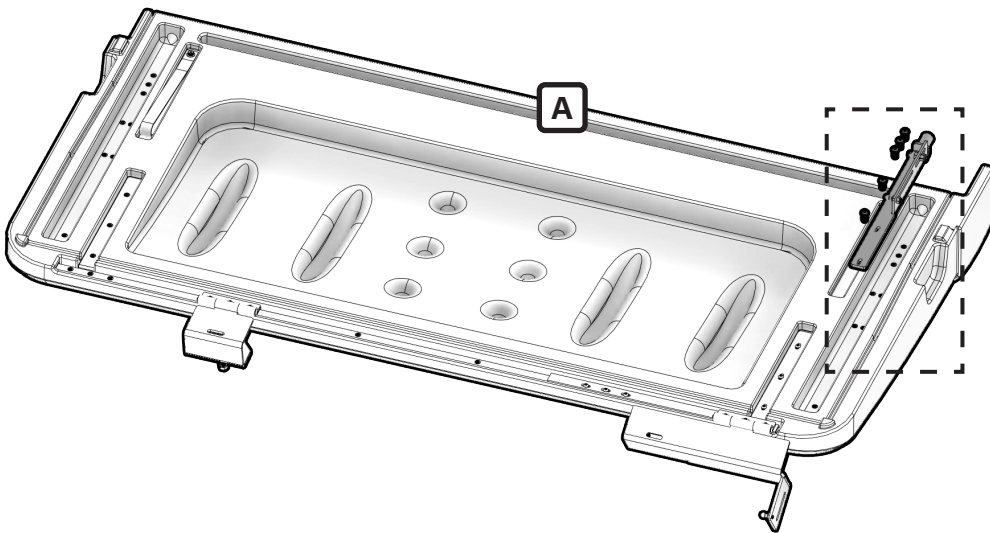


06 | HINGE BRACKET BOLT
x10 | 1/4"-20 x 3/4"

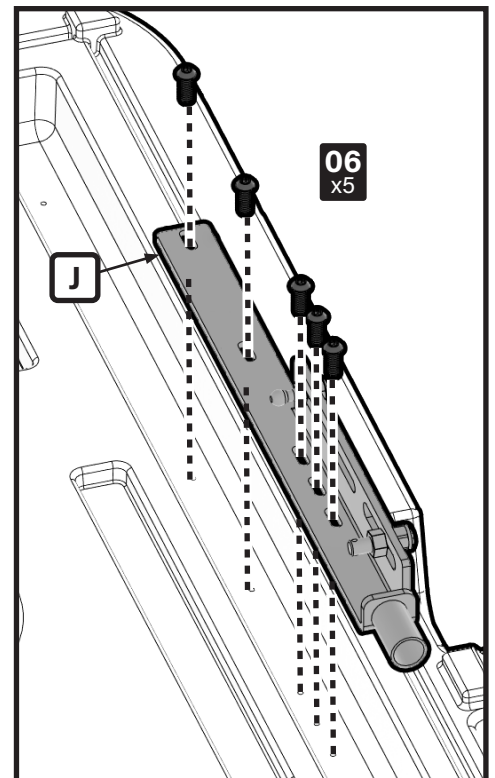
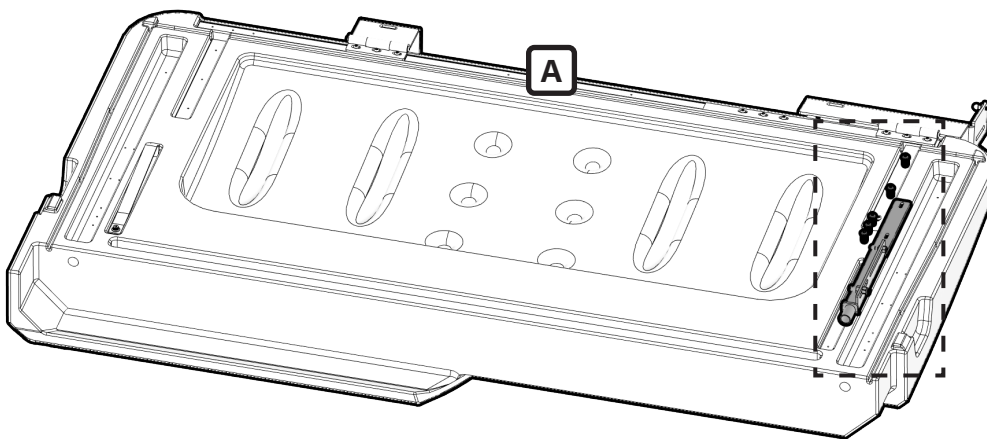
10a

NOTE:

Ensure Gas Spring Brackets are placed on proper door:
Bracket Left ('H') on Door Left ('A').
Bracket Right ('J') on Door Right ('A').



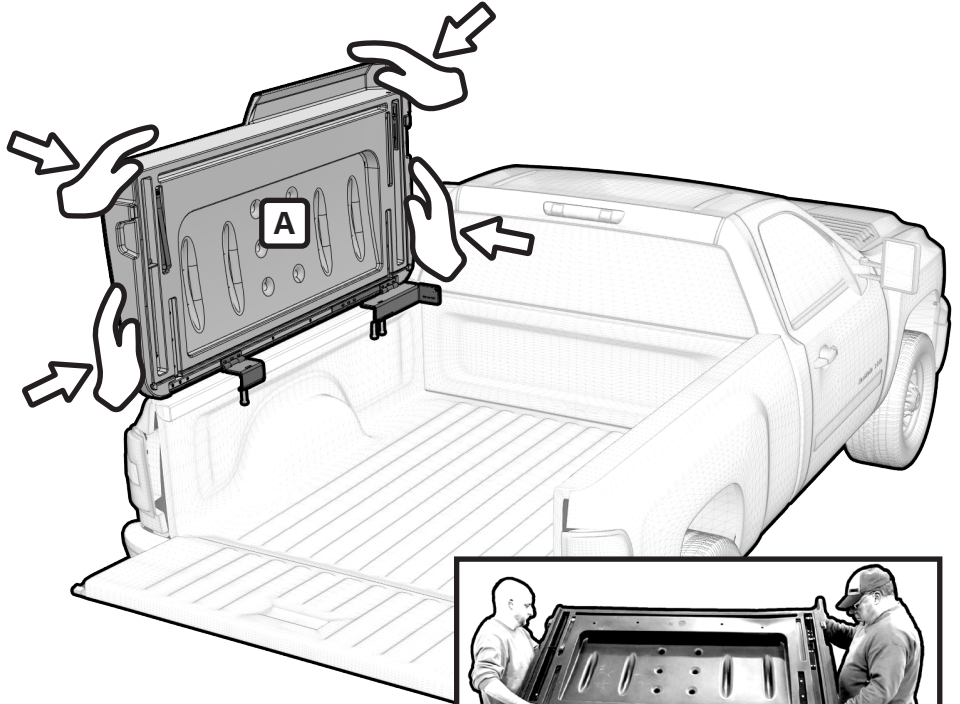
10b



Step 11

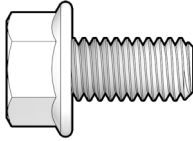
DO NOT FULLY TIGHTEN.

Only tighten bolts so that they make contact with truck bed, but door can still be moved. Further adjustments will be made in alignment step.

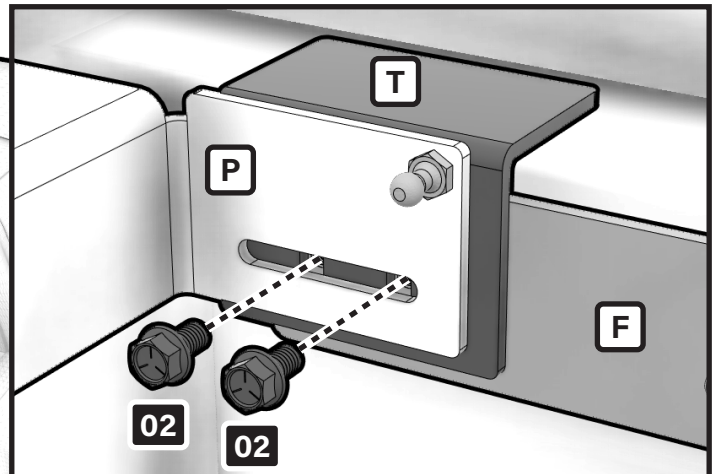
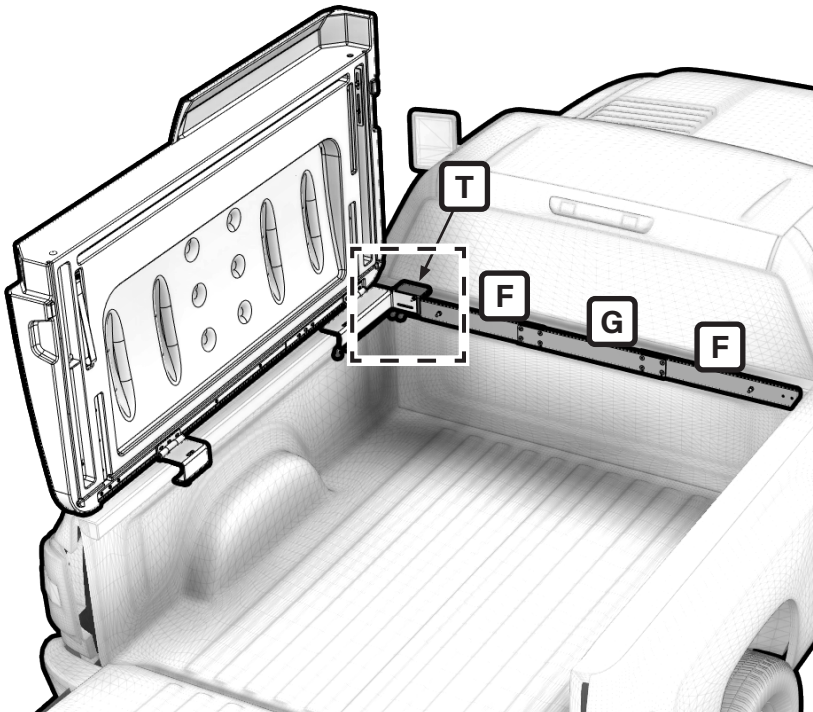


TWO PEOPLE REQUIRED.

Step 12



02 CAB SUPPORT BOLT
x2 5/16"-18 x 5/8"



NOTE:

Cab Support Bracket ('T') must be between Front Hinge ('P') and Cross Bar assembly ('F/G').

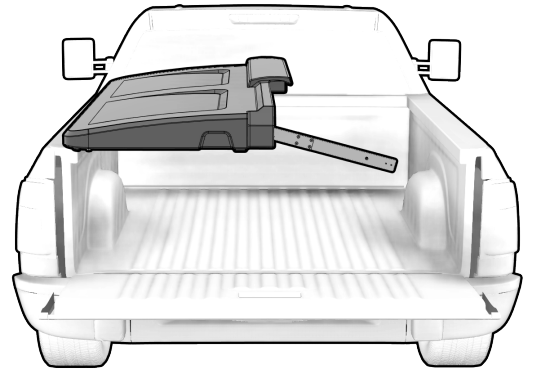
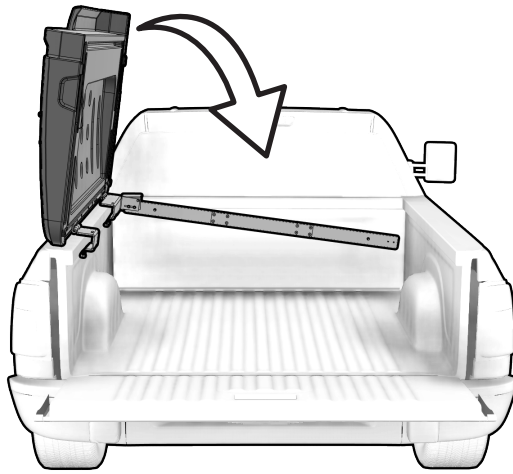
Step 13

13a

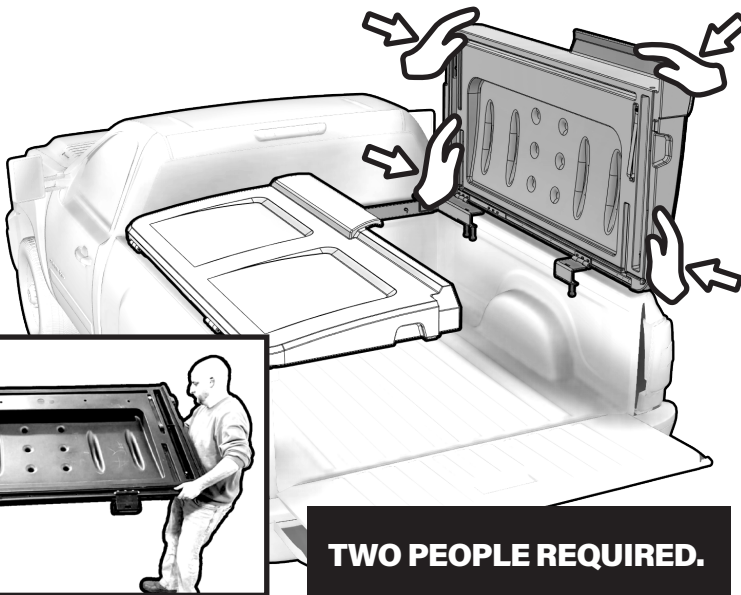
CAREFULLY close left door before mounting right door.

NOTE:

The cross bar and door will rest at an angle during this time.



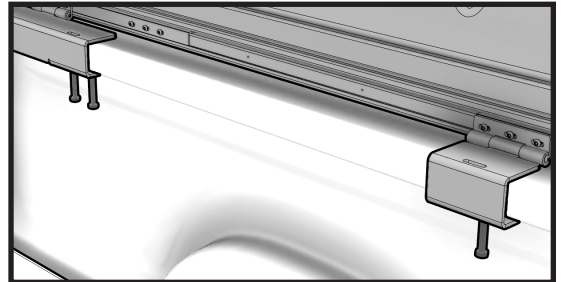
13b



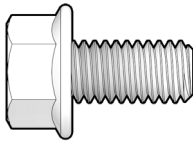
TWO PEOPLE REQUIRED.

DO NOT FULLY TIGHTEN.

Only tighten bolts so that they make contact with truck bed, but door can still be moved. Further adjustments will be made in alignment step.



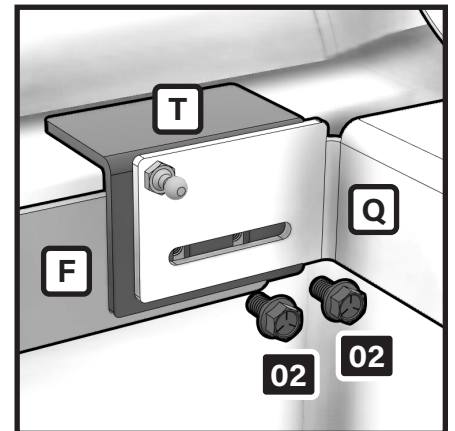
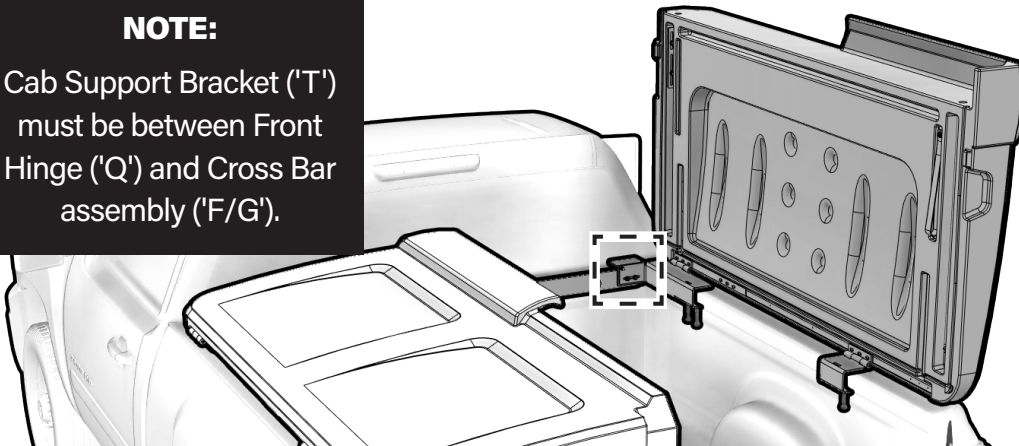
Step 14



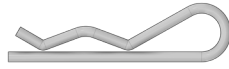
02 CAB SUPPORT BOLT
x2 5/16"-18 x 5/8"

NOTE:

Cab Support Bracket ('T') must be between Front Hinge ('Q') and Cross Bar assembly ('F/G').

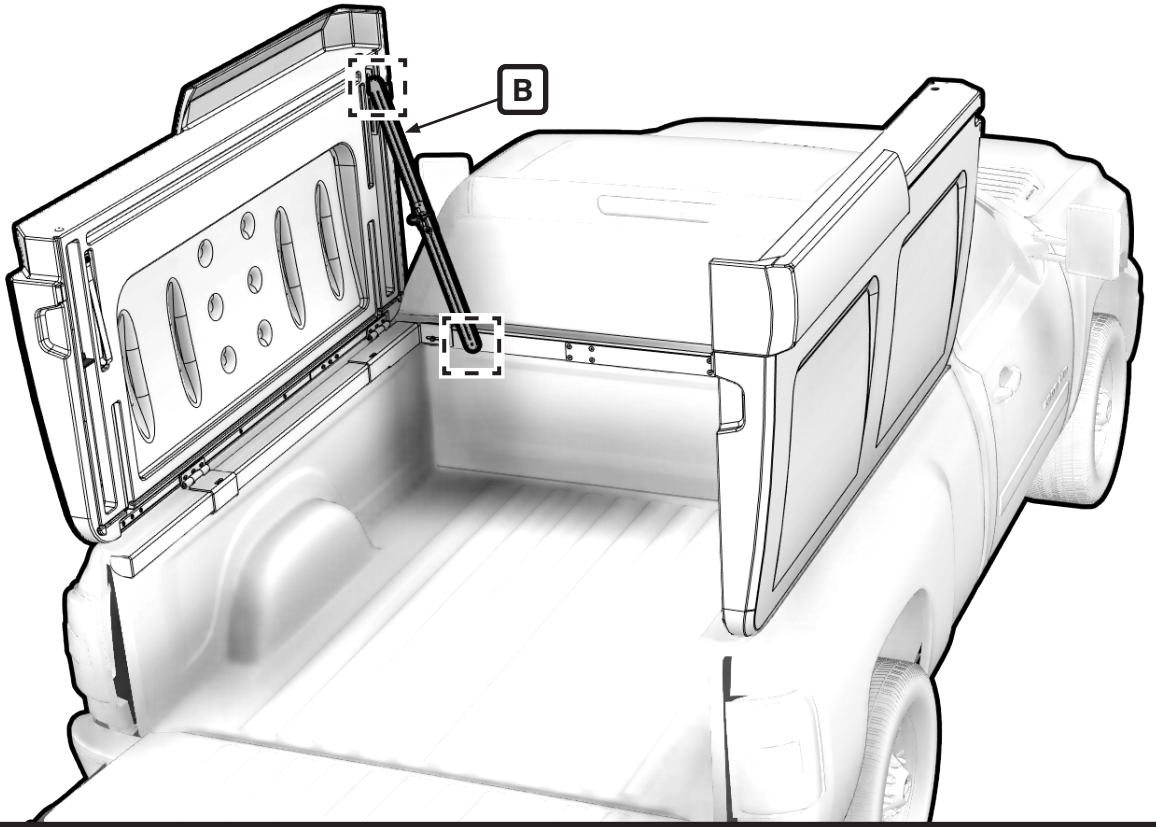
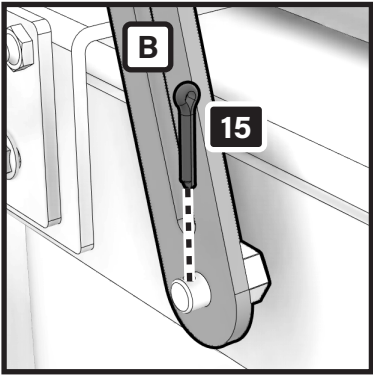
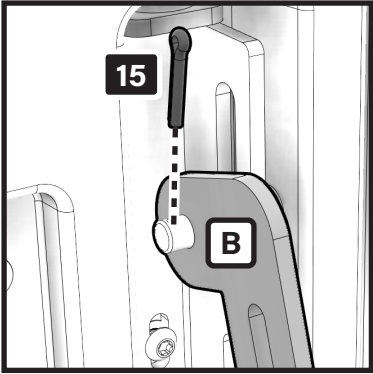


Step 15

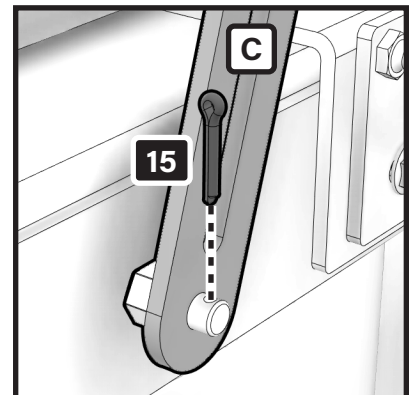
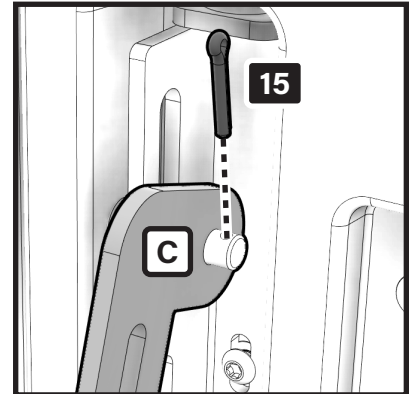
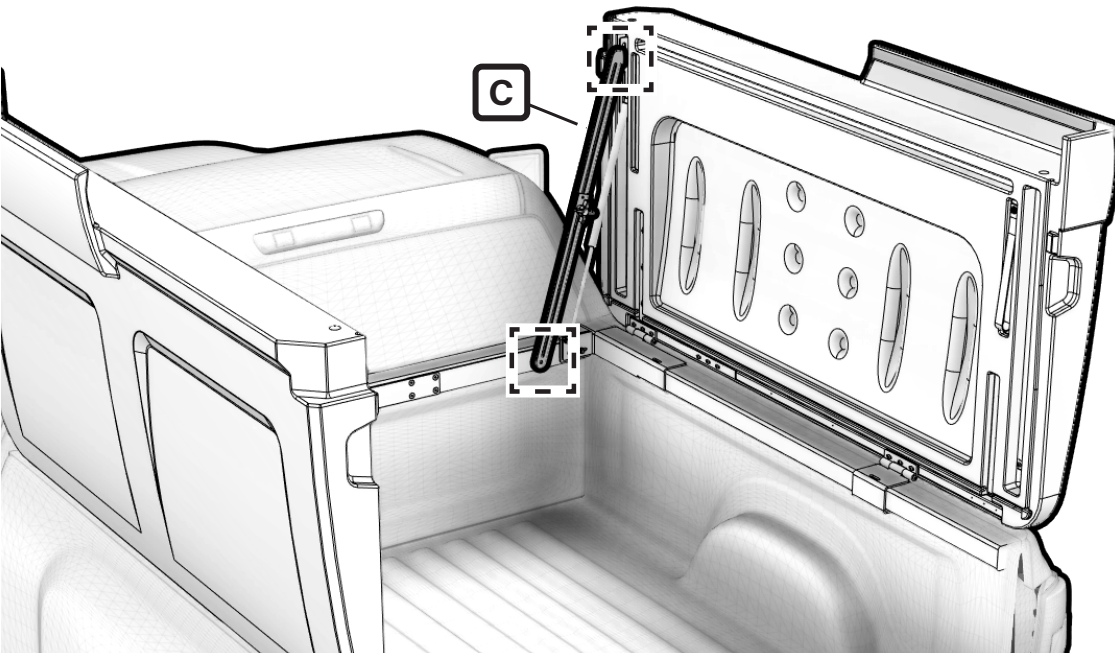


15 | COTTER PIN
x4 | 25 mm

15a

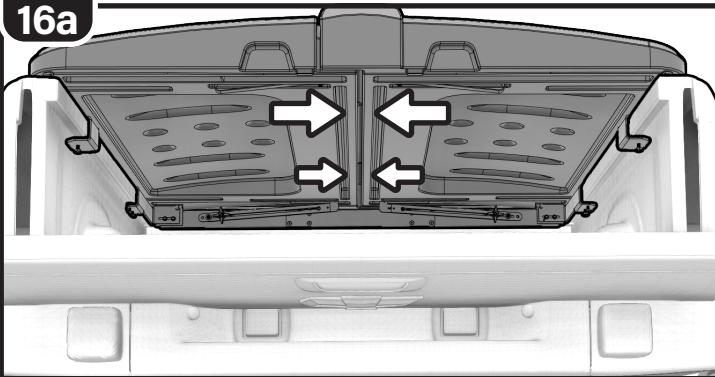


15b

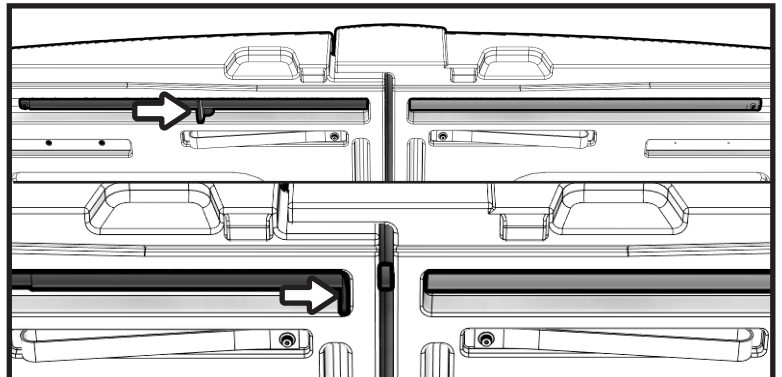


Step 16

16a



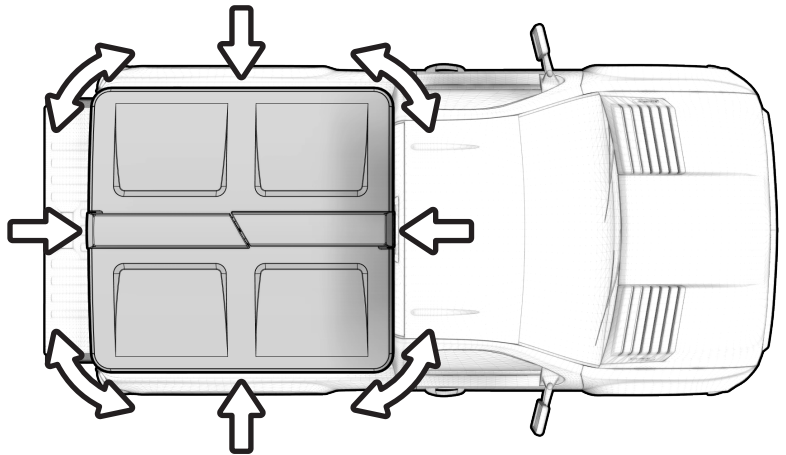
Clamp Left and Right doors together to ensure doors are shut properly and evenly before securing bolts.



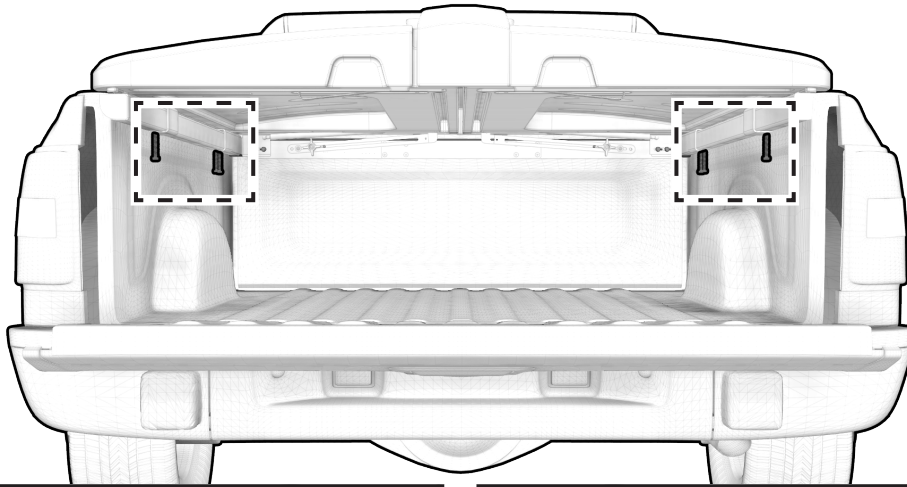
Slide Locking Shaft ('K') to the right, fully engaging the Locking Shaft Receiver ('M').

16b

Make adjustments as needed to align doors so that they are square and evenly spaced on truck bed.



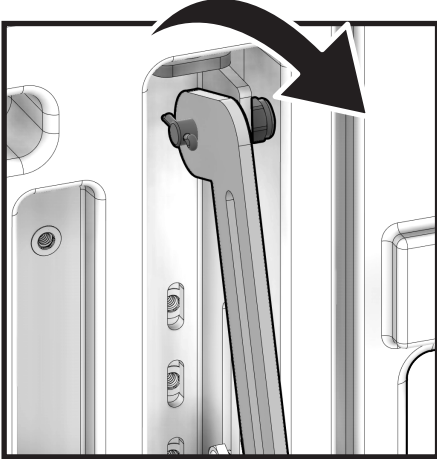
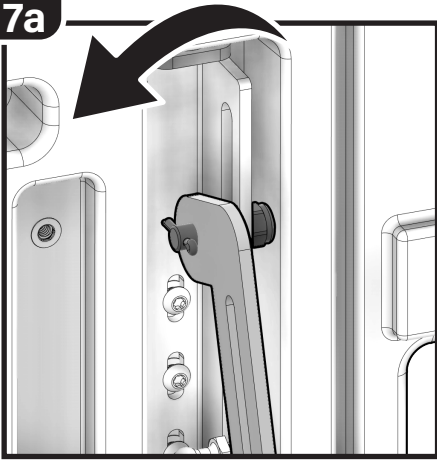
16c



FULLY TIGHTEN.

Step 17

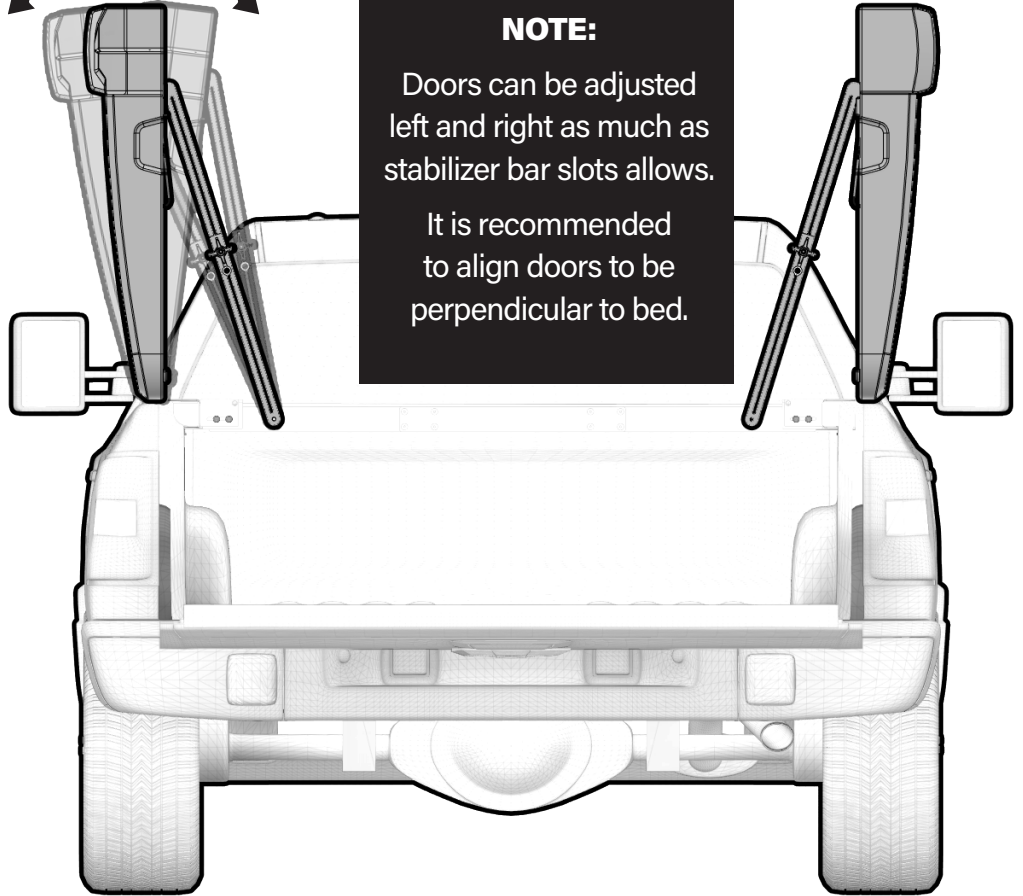
17a



NOTE:

Doors can be adjusted left and right as much as stabilizer bar slots allows.

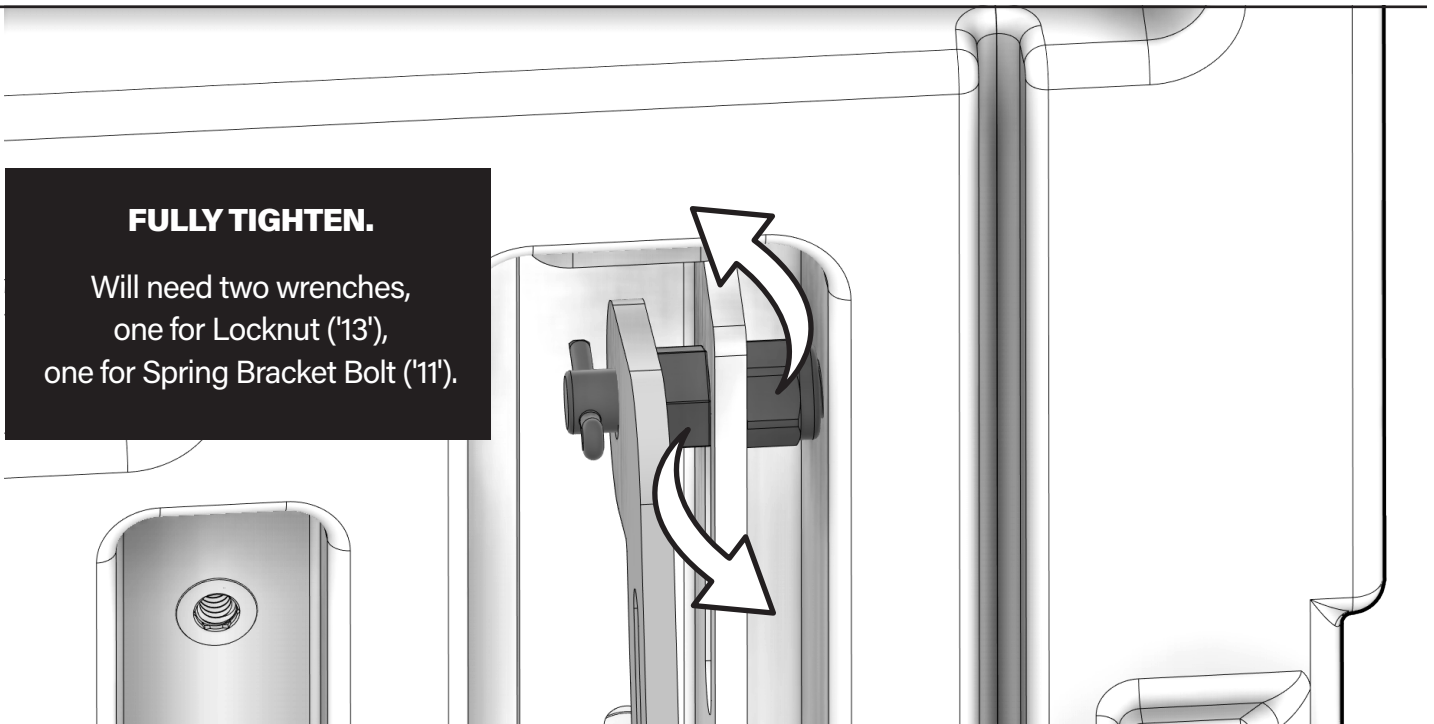
It is recommended to align doors to be perpendicular to bed.



17b

FULLY TIGHTEN.

Will need two wrenches, one for Locknut ('13'), one for Spring Bracket Bolt ('11').



17c

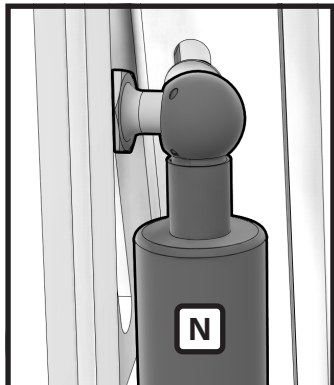
REPEAT.

Repeat 17a & 17b to other door.

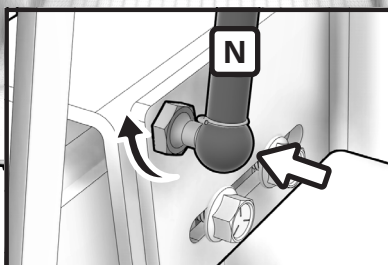
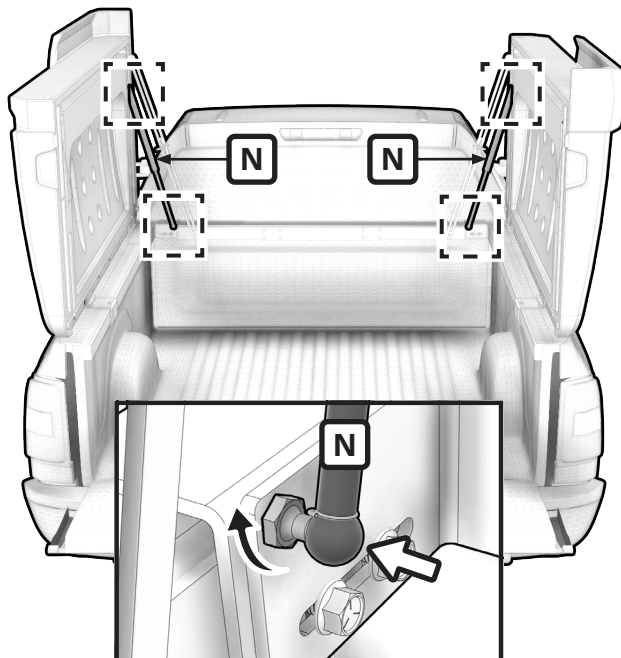
Step 18



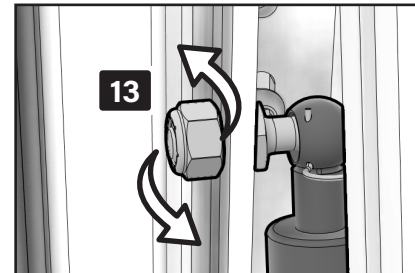
13 | NYLON LOCK NUT
x2 | 3/8"-18



Mount Gas Spring to bracket stud.



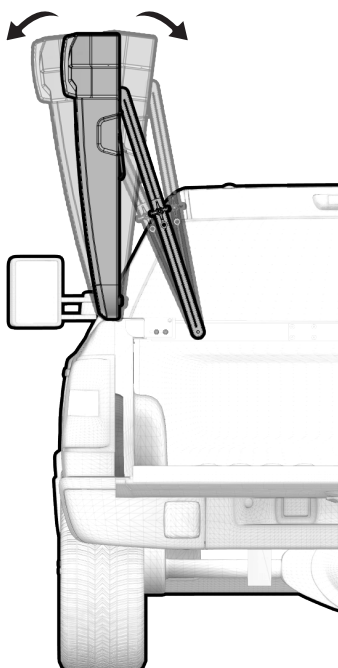
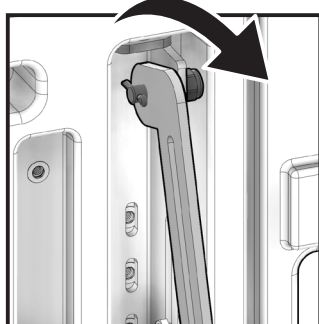
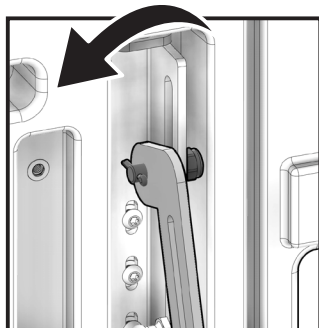
Attach bottom of Gas Spring ('N') to Front Hinge studs.



FULLY TIGHTEN.

Will need two wrenches, one for Locknut ('13'), and one for Spring Stud.

Open Door Lock Check



CAUTION!

When traveling with doors open, the Stabilizer Bar locking knob must be tightened to the key hole as illustrated below.

