



NextGen Housing Australia Pty Ltd is at the forefront of providing innovative and sustainable living solutions in Australia. Recognizing the growing demand for modern modular housing, we specialize in delivering high-quality, environmentally friendly modular capsule and homes that redefine comfort and convenience. Our smart modular capsule and homes are designed with intelligence, sustainability, and superior comfort in mind, offering a new standard of living for those who seek flexibility and style.

### Why Choose NextGen Housing?

- **Sustainable Living:** Our modular capsule and homes are built with eco-friendly materials and designed to minimize environmental impact. We are committed to reducing carbon footprints and promoting a greener future.
- **Cost-Effective Solutions:** Modular capsule and home are not only efficient but also cost-effective. We help our customers save on construction time and costs without compromising on quality or comfort.
- **Innovative Design:** We partner with leading designers to create modern, stylish homes that blend form and function seamlessly. Our modular capsules and homes are equipped with smart technology features that enhance convenience and elevate the living experience.
- **Community and Lifestyle Focus:** We believe in creating more than just homes; we create communities. Our developments are designed with shared spaces and amenities that encourage a sense of community and improve quality of life.







### Our Services

- **Consultation and Design:** We work closely with clients from the initial concept stage to design homes that meet their needs and vision.
- **Manufacturing and Quality Assurance:** Our homes are manufactured in a controlled environment to ensure the highest standards of quality and consistency.
- **Delivery and Installation:** We provide complete delivery and on-site installation services, ensuring that each home is set up safely and efficiently.
- **After-Sales Support:** Our commitment to our customers doesn't end after installation. We offer ongoing support and maintenance services to ensure long-term satisfaction.

### Our Vision

At NextGen Housing Australia, our vision is to revolutionize the housing market by making modular living accessible to everyone. We are committed to providing sustainable, high-quality modular capsules and homes that are not only functional but also aesthetically pleasing, allowing our customers to enjoy a lifestyle that is both modern and environmentally responsible.

### Our Strengths

- **Local Quality Control:** We maintain a local representative at the factory, ensuring that each unit is rigorously inspected for quality before reaching our customers.
- **Industry Experience and Compliance:** Our deep expertise in the Australian construction industry guarantees that all modular capsule and homes meet or exceed Australian and local compliance standards.
- **Turnkey Solutions:** From early-stage planning to complete on-site installation, we provide end-to-end service to make the transition to modular living seamless.
- **Customer-Focused Approach:** Our customer service is tailored to meet individual requirements, ensuring that each client's expectations are fully met.
- **Adaptability and Customization:** Our modular capsule and homes are highly adaptable, allowing customers to personalize their living spaces to suit their unique needs and preferences.

With our extensive experience, rigorous quality control, and commitment to customer satisfaction, NextGen Housing Australia delivers not just homes but peace of mind to our customers across Australia. We are dedicated to shaping the future of housing by offering innovative, affordable, and sustainable living solutions.







**NextGen Housing Australia**

*Your Trusted Partner in Modular Homes*

Ready to build smarter?

# LET'S TALK!



### Schools & Kindergartens

Rapid construction to meet urgent educational needs  
Safe, durable, and energy-efficient classrooms  
Minimal disruption to students and teachers

### Hotels & Apartments

Quick project turnaround for higher return on investment  
Consistent, high-quality modular rooms  
Scalable solutions for urban developments



### Retirement Homes & Community Living

Affordable, high-quality housing for retirees  
Customizable layouts for accessibility and comfort  
Energy-efficient homes for long-term savings

### Our Modular Construction Process Step by Step

1. Design & Planning – Tailored to client needs
2. Off-Site Manufacturing – High-quality factory production
3. Site Preparation – Minimal groundwork required
4. Delivery & Assembly – Fast and efficient installation
5. Final Touches & Handover – Ready for use!







**NextGen Housing Australia**

*Your Trusted Partner in Modular Homes*

## Why NextGen Housing Australia different from others?



**All Modular Homes comply with Australian Standards ensuring safety, health., accessibility, energy efficiency, and sustainability**

**Stimulate Australian labor in various ways;**

- Local assembly and installation creating jobs for tradespeople, engineers, and project managers
- Supply Chain Growth demand for complementary services like landscaping, plumbing, electrical work, and interior finishing can benefit Australian suppliers and contractors
- Transport & Logistics importing and distributing modular homes requires Australian-based logistics companies, truck drivers, and warehouse staff
- Regulatory & Compliance ensuring modular homes meet Australian Compliance Standards involves architects, surveyors, and compliance specialists
- Sales & Customer Support increasing demand for local sales representatives, marketing teams, and after-sales support

**Local Quality Control maintain a local representative at the factory ensuring modular homes are rigorously inspected for quality before reaching our customers**







Modular Home is sparking an innovation wave in the building construction industry. With an efficient modular design, it simplifies the building process. Each section (module) is meticulously crafted to ensure rapid assembly while delivering exceptional strength and durability.

Modular Home is a prefabricated house that is built off-site in sections (modules) in a quality-controlled factory environment, then transported to the home site and assembled.

From cost saving and energy efficiency to design flexibility and speedy construction, Modular Home offers a host of benefits that might just surprise you

### Design Flexibility

A Modular Home is designed with the future in mind. The flexibility and customisation options offered by modular homes make them a great choice for anyone looking for a home that can grow and change with their family over time.

### Low Maintenance

Modular homes are built with longevity in mind with the modules building in a controlled indoor environment. Additionally, Modular Homes are constructed using more durable and resistant materials to wear and tear than traditional building materials.

### Cost-Effectiveness

Modular Homes are generally more cost-effective than traditional homes due to efficient and streamlined construction plus lower labour costs. With energy-efficient materials and designs, Modular Home can help to reduce energy consumption and save money on utility bills over time.

### Reduced Disruption

Since the modules are offsite construction in a controlled factory environment, there is no need for heavy machinery or construction equipment onsite with less noise and dust. The final onsite installation only requires minimal additional work before move-in ready. By choosing a modular home, you can enjoy a smoother, more efficient construction process, with fewer disruptions to your daily routine and minimal impact on your property and neighbourhood.

### Energy Efficiency

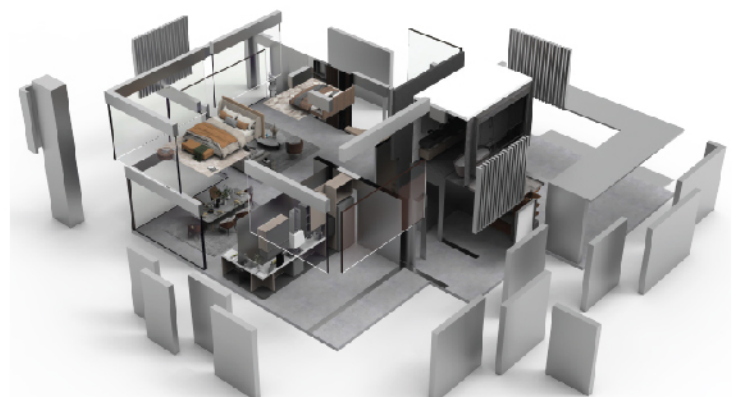
Energy efficiency is a key benefit of Modular Home for homeowners looking to reduce their carbon footprint and save money on their utility bills. With a range of energy-saving features and high-quality insulation, Modular Homes are designed to provide maximum comfort and efficiency while minimising your impact on the environment.

### Faster Build Time

One of the biggest advantages of Modular Home is the speed at which the homes can be built. Since the modules are built in a factory setting, there are fewer weather-related delays and other setbacks that can slow down traditional construction projects.

### Environmentally Friendly

Modular Homes offer a more eco-friendly housing option for homeowners who want to reduce their environmental impact without compromising on functionality. These homes are built with energy-efficient materials and design features, produce less waste during the designing and controlled pre-designed process, and use sustainable materials that are better for the environment.

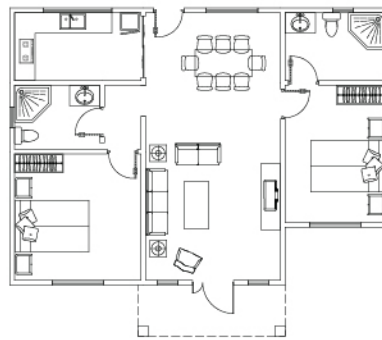






**NextGen Housing Australia**  
*Your Trusted Partner in Modular Homes*

## Single Storey Modular Home MHSS

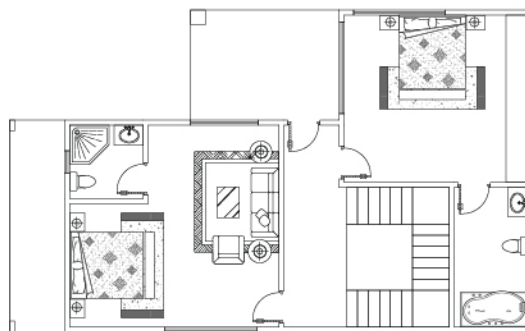
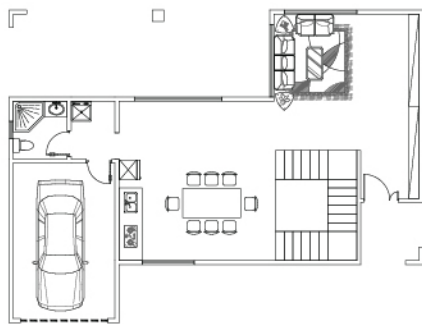






**NextGen Housing Australia**  
*Your Trusted Partner in Modular Homes*

## Double Storey Modular Home MHDS

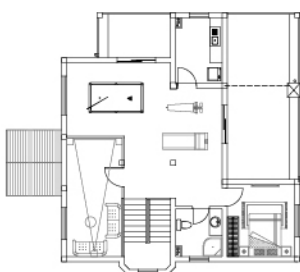
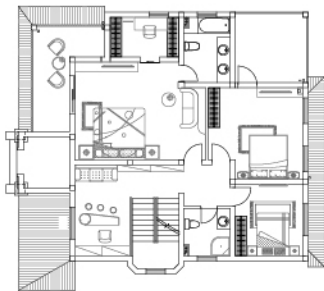
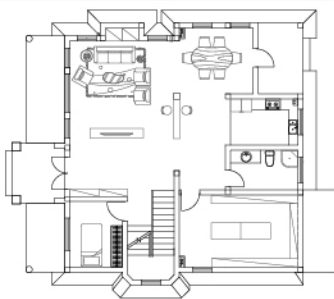






**NextGen Housing Australia**  
*Your Trusted Partner in Modular Homes*

## Triple Storey Modular Home MHTS







**NextGen Housing Australia**

*Your Trusted Partner in Modular Homes*

## Capsule House Advantages

**Cost-effective** - Capsule House is constructed in the factory where it goes through strict quality control. It then delivers to site with simple and quick onsite installation, which minimizes dust and noise in comparison with traditional house construction. Capsule House is cost-effective as requiring less time and labors. Therefore Capsule House is typically more affordable than traditional house, making homeownership accessible to a wider range of people, including young professionals and those on a budget.

### Design for Limited Space

Capsule House is expertly designed to make the most of limited space. Their compact layout and multi-purpose furnishings ensure that every inch is utilized effectively, therefore Capsule House is an ideal housing in an urban area that has limited space.

### Capsule House as Primary Residence

Serving as primary residences, Capsule House exemplify efficient space utilization and minimalist living. The key advantage is affordability offering a budget-friendly alternative with lower rent or purchase prices.

### Mobility

Unlike traditional house, Capsule House can be easily relocated whether for work, travel, and lifestyle changes. As the result of Capsule House mobility, it can minimize resource waste and reduce environmental impact.

### Capsule House as Temporary & Emergency Housing

With equipped essential amenities in a compact and durable structure ensuring a safe and secure environment for occupants in emergency situations. The rapid deployment design which makes Capsule House be assembled and disassembled for transporting and setting up in affected areas.







### Capsule House as Hotel

Capsule House have found a unique niche in the hospitality industry as offering compact and modern accommodations as capsule hotel providing travelers with affordable and efficient stays, especially in bustling urban centers.

### Capsule House as Resort

Capsule House is revolutionizing the tourism and hospitality industry, especially in scenic spots and resorts offering unique and flexible accommodation options. The sustainable and eco-friendly design of Capsule House align with the growing demand for green tourism options.

### Capsule House for Camping Site

Capsule House upgrades the camping experience from traditional camping by providing modern amenities within a compact and efficient design. The robust materials can withstand the rigors of outdoor use with protecting from wind, rain and extreme temperatures. The eco-friendly and sustainable design of capsule houses minimizes environmental impact and fosters greener camping practices.

### Capsule House as Urban Station

Capsule House can be deployed quickly to provide emergency or transitional housing for the homeless or displaced populations. The compact footprint allows Capsule House to fit in small urban areas like sidewalks or parking spaces for various services or retail purposes. With the easy installation and portability, Capsule House is also perfect for temporary retail or dining set-ups as pop-up shops for seasonal or promotional events.

### Environment Impact

Capsule House has minimum impact on the environment as requiring no large-scale excavation or site leveling onsite. Capsule House also adopts internationally certified eco-friendly materials reducing environmental impact from the sources. Moreover Capsule House uses efficient insulation materials reducing daily energy consumption and carbon footprint, which making Capsule House more energy-efficient and environmentally friendly.

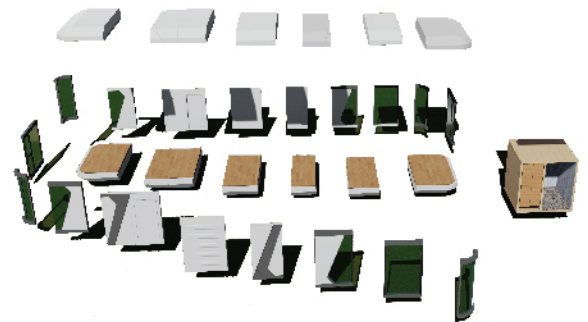
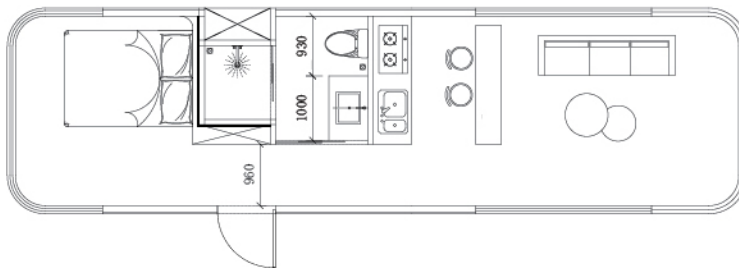
With the prevalent urbanization and soaring costs of housing, Capsule House has gain global traction as a practical solution for addressing housing shortages and providing temporary dwellings to travelers and transient workers. Capsule House, with sleek, efficient and sustainable properties, offers a glimpse into the future of living.







Size: 11.5 x 3.3 x 3.3m area of structure 37m2



The modern traveler often looks not for a bed to sleep in but for a creative & original experience within a new type of accommodation. One of the new and interesting housing concept that perfectly suits these new types of travelers is the Space Capsule House. The Space Capsule House features a robust structure with an overall frame made of hot-dipped Galvanized

steel plates and an aluminum alloy shell, ensuring stability while showcasing its elegant and sophisticated design. Additional the Space Capsule House adopts environment friendly materials to achieve sustainable development and establishes a social responsibility image of environment protection.

As increasing flexibility on

assembly & disassembly with saving on shipping costs, the next generation Modular Space Capsule House has been launched in Australia. The Modular Space Capsule House is a prefabricated home that is built off-site in sections (modules) in a quality-controlled factory environment, then transported to the home site and assembled.







Size: 11.5 x 3.3 x 3.3m area of structure 37m2



Apple Capsule is a type of prefabricated modular home that is becoming increasingly popular due to their unique design, affordability, and sustainability. Apple Capsule is characterized by the spherical or oval shape, which gives Apple Capsule a futuristic appearance and allows for efficient use of space. Modular Apple Capsule typically made from lightweight materials such as aluminum or fiberglass, and can be easily assembled and disassembled.

Modular Apple Capsule can be used for Primary Residence, Vacation Homes, Rental Properties and Emergency Shelters.

Overall, Modular Apple Capsule is a great option for people who are looking for a unique, affordable, and sustainable home. Modular Apple Capsule is also perfect for people who want to live in a variety of places or who need temporary housing.

