

Blueprint® Enterprise 5.4

Flexible and scalable print management
for complex, security-conscious enterprises





Pharos Blueprint Enterprise is an ISO 27001 certified on-premises print management solution with a proven track record of helping the largest enterprises with complex print workflows and multi-vendor fleets to:

- Reduce costs
- Enhance security
- Optimize printing

Blueprint's unique combination of flexibility, scalability, and integration with existing technology investments makes it easy for you to manage your entire print environment.



BENEFITS



Reduce Printing Costs

Leverage Existing Investments

Scalable and reliable platform integrates with Active Directory and LDAP user authentication

- Single system with the flexibility to work with your mix and match of printer manufacturers and device models
- Manage fewer print queues with secure print workflows allowing users to conveniently print at any Pharos-secured device
- Reduce print servers by holding print jobs at the workstation level—ideal for remote/branch offices and secure printing in restricted network areas

Manage with Quotas

Control printing costs by instituting monthly page count quotas.

- Manage and enforce quotas on a per-group basis—quotas don't prevent printing if threshold is exceeded—the user and manager are notified by email
- Set separate quotas for black & white pages and color pages, as well as different departments and managers

Foster Mindful Printing Habits

Establish more sustainable printing habits by educating users and enforcing print policies.

- Notify employees about company printing policies
- Encourage more efficient options at the point of action
- Educate employees about the costs of printing in terms of dollars and sustainability metrics

Use Less Toner

Reduce toner consumption 25–35% while still achieving the same print quality you have today. (Option)

- Achieve significant cost savings by leveraging Pixel Optimization
- Define the level of toner savings you want and automatically apply it to all jobs, specific jobs, or specific applications
- Set toner saving rules for specific groups, departments, or users



Enhance Security

Secure Your Devices & Documents

ISO 27001 certified platform secures network devices so documents can only be released after owner authentication.

- Control access to all features on multi-function devices.
- Leverage the latest security standards, TLS 1.2 and IPPS
- Print forensics automatically identifies documents containing sensitive information specified and notifies Data Protection Officer or interested Parties



Optimize Printing

Schedule Reports

Automatically distribute monthly reports reflecting the state of your print environment.

- Choose from over 50 reports, including an enterprise summary, job-level tracking, and device utilization
- Send reports off-schedule for unplanned requests
- Audit printing costs and recover by charging back to departments
- Up-to-date printer information enables Admins and Analysts to model data and obtain more accurate insight
- Easily integrate with 3rd-party reporting tools

Track and Manage from Your Browser

Print Center makes it easy to manage common administrative tasks right from your browser.

- Troubleshoot issues in your print environment without having to log into a server
- Track and manage system performance and components that may affect printing operations

Intuitive User Experience

Provide a consistent user experience on multifunction printers embedded with Pharos' common UI, regardless of manufacturer.

- Reduce user training and frustration with a consistent look-and-feel across MFPs from different manufacturers
- Customize the UI to display your organization's logo and brand colors

PHAROS PRINT CENTER™

Users can easily manage their print queue:

- A** View and release print jobs sent to Pharos queues
- B** Select printers previously used or search for a new printer
- C** Delete jobs that you no longer need to print
- D** Preview a document before printing

Organizations with MobilePrint enable users to:

- E** Upload documents to the print queue
- F** Modify finishing options for jobs submitted by e-mail or web upload (e.g. color vs. monochrome, simplex vs. duplex, number of copies, etc.)
- G** Support touchless print release via QR code scan to limit employee contact on shared surfaces

The screenshot displays the PHAROS Print Center web interface. At the top, the logo and 'Print Center' text are visible. Below the header, there are tabs for 'My Printing' and 'Job List'. The 'Job List' tab is active, showing a table of print jobs. The table has columns for checkboxes, Type, Title, Print Preview, Pages, Pieces of Paper, and Submitted. Two jobs are listed: 'Communications policy.docx' and 'User Conference Attendees.docx'. The first job is selected, and its details are shown in the 'Selected 1 documents' section. This section includes 'Print options' (Color, Black & White, Pages per side, Double Sided, Copies) and 'Destination' (Select a printer). A 'Print' button is located at the bottom right. An inset image on the right shows a tablet displaying a 'Secure Print Login' screen with a QR code, and a smartphone scanning the QR code, illustrating the touchless print release feature.

PHAROS Print Center

My Printing

A Job List

Refresh **C** Delete Upload **E**

<input type="checkbox"/>	Type	Title	Print Preview	Pages	Pieces of Paper	Submitted
<input checked="" type="checkbox"/>	W	Communications policy.docx	D	1	1	5 seconds ago
<input type="checkbox"/>	W	User Conference Attendees.docx		1	1	10 seconds ago

Selected 1 documents

Print options : **F**

Color: Black & White Pages per side: 1

Sides: Double Sided Copies: 1

Destination : Select a printer **B**

Print

© Copyright 2015 - Powered by Pharos®



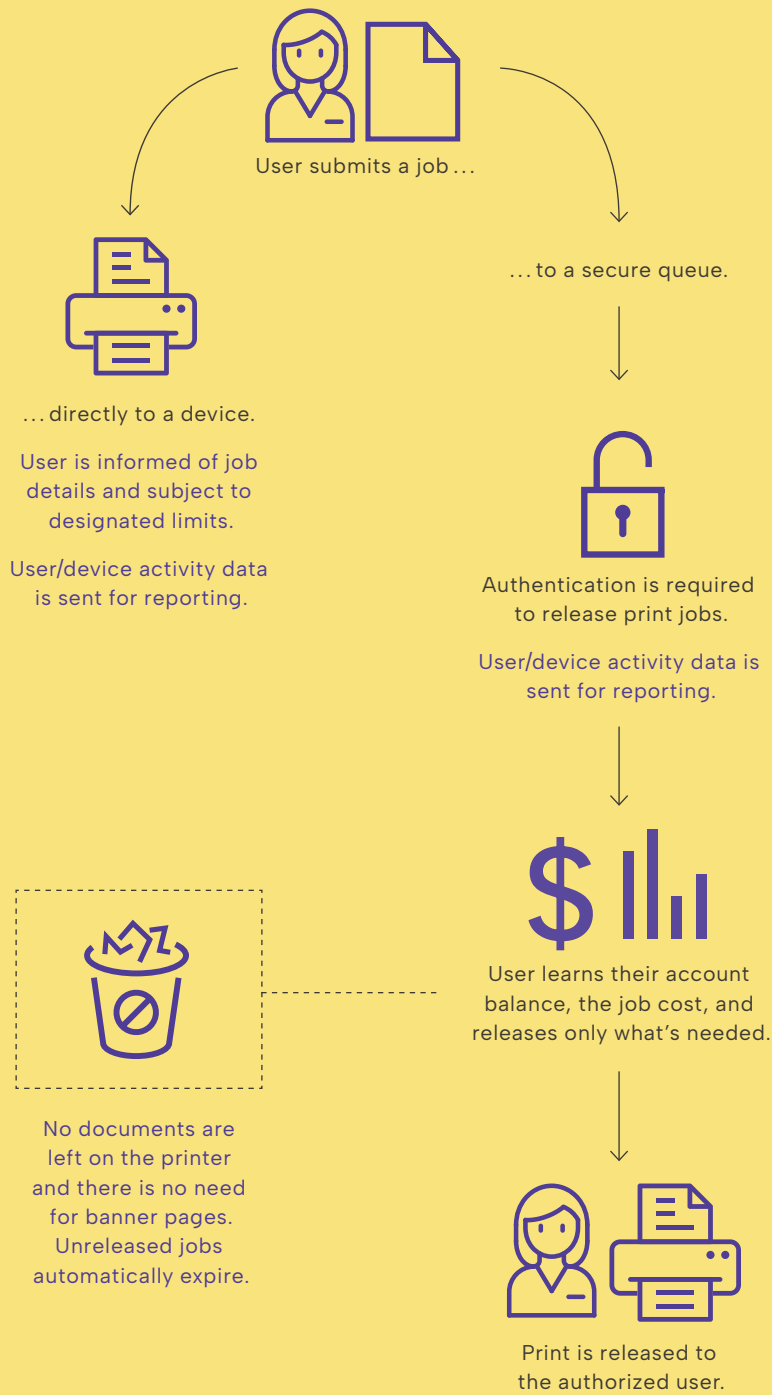
SECURE PRINT

Print jobs are held on the network and released after the user authenticates at the device.

- Ensure confidential documents are released and collected by their owner.
- Significantly reduce the amount of abandoned and forgotten documents.
- Save users from having to rifle through stacks of paper to find their documents.
- Release jobs at any Pharos-enabled printer, regardless of its manufacturer or location.

The Secure Print Workflow

Secure Print frees IT staff from managing hundreds of print queues and endor-specific print drivers, and it eliminates piles of unclaimed printouts.



PHAROS MOBILEPRINT™ (OPTIONAL)

Add Pharos MobilePrint to enable print from any e-mail or web-enabled device, on or off-site, to any Pharos-secured printer, regardless of manufacturer. With MobilePrint, you can leverage and extend your Blueprint investment, making the jobs of employees, administrators, and IT professionals much easier.

Driverless Printing

MobilePrint does not require print drivers. All a user needs is a web browser or the ability to send e-mail. Print jobs can be easily sent from all versions and flavors of Windows®, Mac, and Linux. It's that simple.

Device Independence

Pharos MobilePrint allows you to release your print jobs at any Pharos-secured printer, regardless of its manufacturer or location. Organizations often have a mixed collection of printing devices from different manufacturers. MobilePrint provides the convenience and flexibility to work with all of them.

Secure Printing

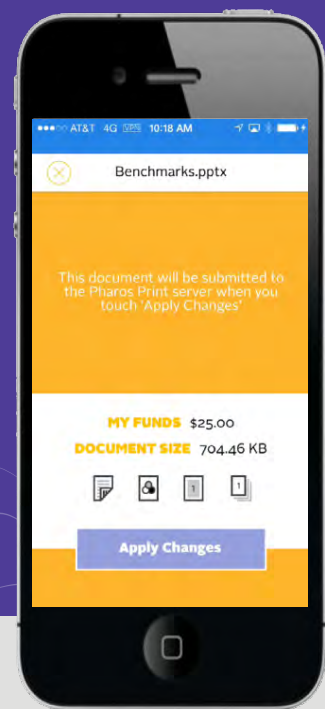
MobilePrint can leverage our Secure Print technology for superior document security. Users must be present at a device to authenticate and release a job.

Mobile Apps

Our Pharos Print app for iOS and Android devices makes it even easier for employees to submit documents for printing and view available funds and print history.

Submission Notifications

When jobs are submitted via e-mail, users are immediately notified that their document is ready for release. They are also notified if a job cannot be printed due to an unsupported file format. This immediate feedback gives the user an opportunity to resubmit in a supported format before they walk to a printer.



SUPPORT FOR POPULAR FILE FORMATS & E-MAIL PROTOCOLS

All of the most commonly printed file formats are supported, including*:

Adobe® Portable Document Format (.pdf)

Office Documents

- Microsoft® Office (.doc, .docx, .xls, .xlsx, .ppt, .pptx)
- Microsoft Outlook (.msg, .eml)
- Microsoft Publisher (.pub)
- Microsoft Visio (.vsd)
- Open Document Formats (.odt, .ods, .odp, .odg, .odf, .otg)

Image Files

- .jpg, .jpeg, .gif, .bmp, .png, .tiff

Text Formats

- .txt, .ini, .cfg, .rtf, .csv

E-mail Contents

- HTML as part of the e-mail body (HTML links or attachments are not supported)
- E-mail in web links not requiring authenticated access

E-mail Protocols

- POP3, Exchange (EWS), Google Mail (Gmail API), Office 365 (OAuth)

* See product documentation for a full list of supported file formats.

MOBILEPRINT USER EXPERIENCE



With the Pharos Print app, users can easily send content from their iOS or Android device to any Pharos-secured printer. Download the app directly from the Apple app store or Google Play store.

The following scenario and diagram illustrates a typical user experience with Pharos MobilePrint:

1) Submit documents to print:

OPTION 1 E-mail documents to the address set up for MobilePrint (e.g. print@organization.com).

OPTION 2 Upload files via the Pharos Print Center or Pharos Print app.

2) Release the documents:

OPTION 1 Walk up to your preferred device, authenticate using your ID or access card, and then select the document(s) in your queue that you want to print.

OPTION 2 Log into the Pharos Print Center and select the documents you want to print.

3) Collect documents from the printer

SYSTEM REQUIREMENTS

Server Operating Systems

Microsoft®

- Windows Server 2022
- Windows Server 2019
- Windows Server 2016

Software Requirements

- Microsoft® Internet Information Services (IIS) 7.0 or later
- Microsoft® .NET Framework 4.6.1 or higher
- Microsoft .NET 6+

Hardware Requirements (minimum*):

Blueprint Collector(s)

- Single processor, dual core or greater
- At least 4 GB RAM, and at least a 40 GB hard disk

Blueprint Analyst

- Single processor, dual core or greater
- At least 4 GB RAM, at least a 40 GB hard disk

Database

Microsoft SQL Server 2017/2016/2014/2012

Client Operating Systems

Microsoft®

- Windows 11
- Windows 10
- Windows 8/8.1
- 64 bit versions and thin client support

Windows Workstation SCOUT Requirements

- Microsoft® Windows Installer 3.1

Apple

Mac OS 10.14 – 11.5

We also support Citrix environments. Please contact Pharos for more details.

* The number of users and type of features used may impact these recommendations. Please consult Pharos for assistance in planning your server configuration.

4545 EAST RIVER ROAD
SUITE 210 West Henrietta, NY 14586 USA
888 864 7768 (toll free US/Canada)

pharos.com | community.pharos.com | Copyright © 2022 Pharos Systems International, Inc. Pharos®, Pharos Blueprint®, Secure Release Here®, MobilePrint™, Pharos Print Center™, Policy Print™, and Discovering Best™ are trademarks or registered trademarks of Pharos Systems International, Inc. The trademarks and names of other companies and products mentioned herein are the property of their respective owners.

To learn how Pharos can do the same for you, contact us today.
(585) 939-7000 or sales@pharos.com



www.pharos.com