

**DEKTON**<sup>®</sup>  
designed by COSENTINO

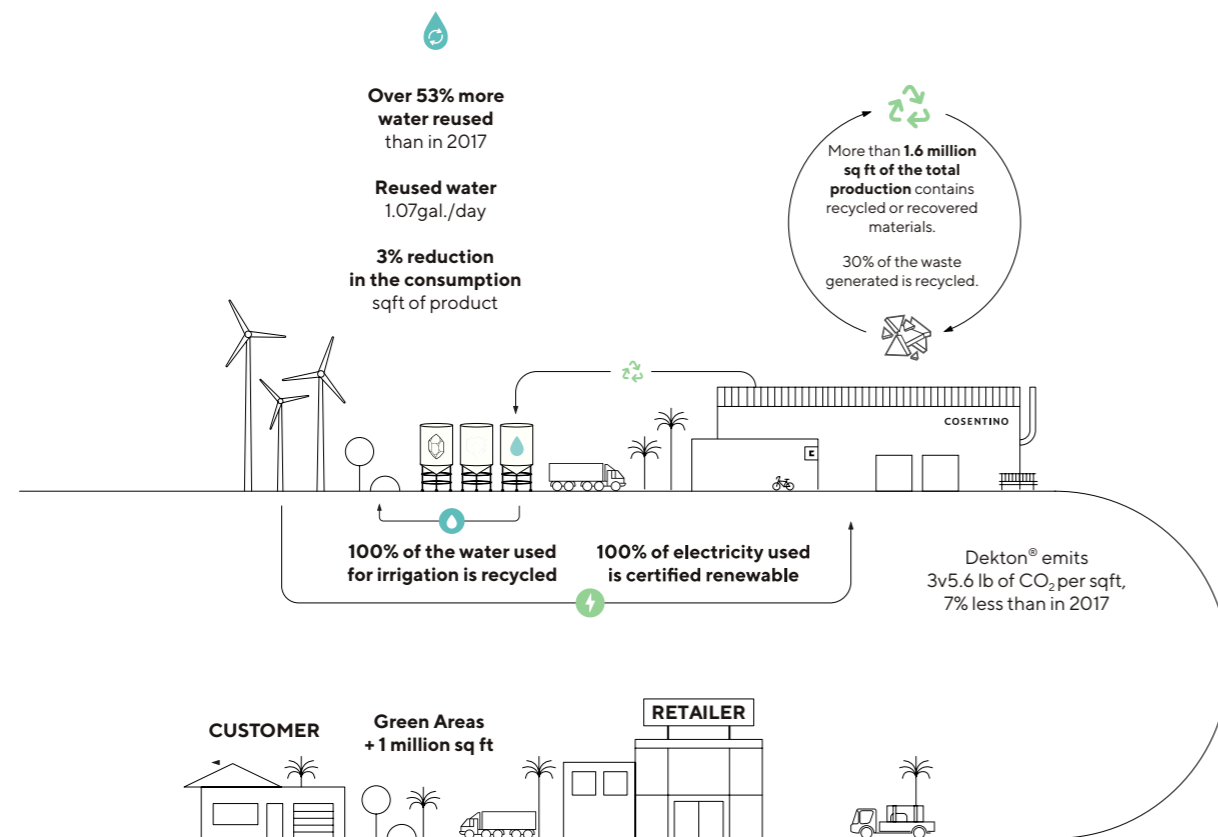


Dekton for Facades

## Index

<b>04</b>	By Cosentino*
<b>08</b>	What is Dekton*?
<b>06</b>	Why use Dekton* for Facades?
<b>20</b>	Systems for Facades
<b>32</b>	References
<b>46</b>	Color Chart
<b>50</b>	Environment
<b>52</b>	Technical Sheets

# Cosentino, Towards A True Circular Economy



 Renewal of regulation **ISO 14001:2015**

 We promote sustainable products with up to **25 years warranty**

 **Mobility Strategy**  
Our sustainable mobility strategy reduces over 1,200 tons of CO<sup>2</sup> emissions per year.

 We obtained our **Environmental Product Declaration (EPD)** for Silestone®

 Our agreement with shipping companies reduces overall CO<sup>2</sup> emissions by 4000 tons per year

The data provided refers to activities at the Cantoria Industrial Park in 2018 ( Almería, España)

## Water Management

Water is a limited resource. That is why we have adopted the following measures in the Dekton® manufacturing process:

- Four tanks located in different locations of the factory allow for the collection of cleaning water that will be reused in the process.
- A system to get water through reverse osmosis.
- A water pouring and purification system that enables water used in the process to be treated and saved.

## Atmosphere

Protecting the air is fundamental, not only for the environment, but also for our health. The measures adopted in the Dekton® manufacturing process include:

- Airtight transport systems for micro raw material from the truck to the mill.
- Integrated transport systems that minimize potential emissions from the point of origin of the colored raw material (atomisers) to the point of storage (24 hermetic silos).
- Centralized systems for the collection and purification of particles using seven-bag located at various points throughout the factory.
- Installed vacuums for the suction, treatment and recovery of fumes from the ovens.
- MDR and SPR systems for the recovery of heat from the ovens.

## Sustainable Model

Sustainable mobility plays a fundamental role in Cosentino's sustainability policy. For this reason, more than 1.2 miles of cycle paths have been built at the new Dekton® industrial park, to give the ability to bike between buildings.

We also encourage the use of electric vehicles for transporting people and supplies around the industrial park.

## Waste Evaluation

The following systems have been installed for the recovery of waste generated during the manufacturing process:

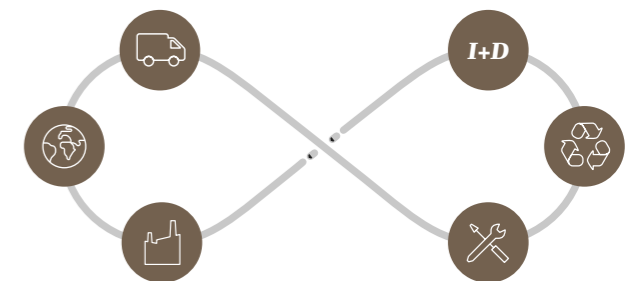
- Various facilities for reusing crude waste before the heat treatment process.
- A system of dust recovery at the various emission capture points.
- Cleaning machinery (sweeping-mopping type) with water recycling system.

## Energy Efficiency

In addition to all of the other energy saving methods that we have adopted, we have installed skylights to maximize the use of natural light. For areas where light is needed, we have installed time controlled interior and exterior LED lighting to reduce the electricity used.

## Green Spaces

269.098 sq ft of green spaces have been created around the new industrial park. More than 200 trees and native plant life have been planted that suit the dry conditions of the area.







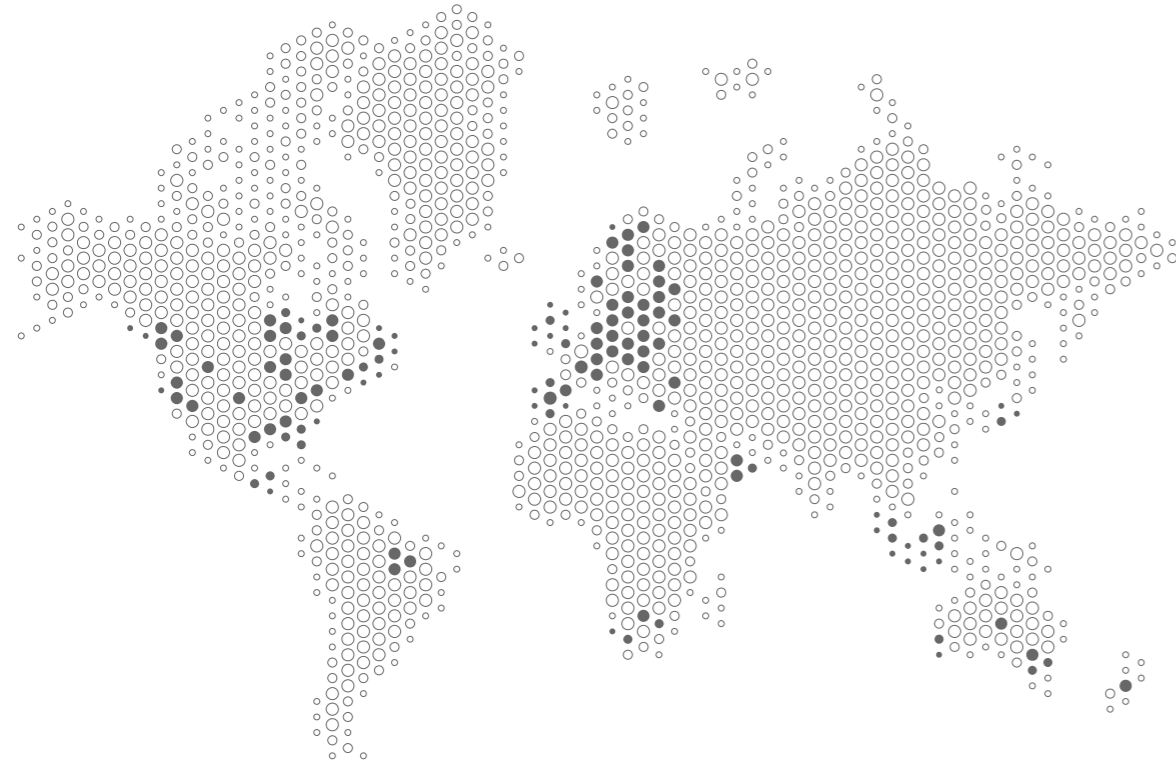
## by **COSENTINO**<sup>®</sup>

Cosentino<sup>®</sup> is an international family-owned company that produces and distributes surfaces that enrich architecture and design. Founded in 1979 with business activities in natural stone, the company today has 5 worldwide brands that are considered industry standards. Its commitment to innovation has created an industrial park of more than 1,000,000 sqft which year after year continues to grow thanks to the passion of its more than 4000 employees around the world.

Cosentino's main offices<sup>®</sup> are located at the Cosentino Group Industrial Park<sup>®</sup> in Cantoria which is located in the province of Almería, Spain. These offices are the productive, administrative and logistical hub from which the Group manages and supervises its international distribution system.



# By Cosentino®



## Very Close to Our Customers and their Projects

Our Cosentino CENTERS are the heart of the company no matter where we might be in the world. Our warehouses are available to those curious and passionate about design who may want to touch and see our products on a real scale. We are witnesses of the chromatic richness that each Dekton® slab brings to the world of design.

Our Cosentino CITIES, which are located in some of the most iconic cities around the world, create spaces so that anyone can discover Dekton® and the latest market trends by using all five senses. Besides the fact that you can use them as your own office, they are spaces whose configuration encourages meetings, classrooms, exhibitions, etc. We consider them to be social, dynamic places where you can exchange ideas.

### North America

43 Centers  
2 Hubs  
12 Workshops  
6 Cosentino Cities

### Latin America

26 Distributors  
1 Granite Factory  
8 Centers

### Singapore

1 Centers  
1 Cosentino City

### Australia

3 Centers  
1 Cosentino City

### Turkey

3 Centers

### Israel

1 Center

### Europe

23 Centers  
1 Cosentino City  
14 Distributors

### Iberia

20 Centers  
1 Cosentino City







## What is Dekton®?

Dekton® is a sophisticated blend of more than 20 inorganic minerals that have been extracted from nature. Its production process is the result of years of learning and gathering inspiration from the manufacturing process of glass, state-of-the-art porcelain and quartz surfaces.

The manufacturing of Dekton® uses exclusive TSP technology, which is capable of sintering mineral particles and causing them to bond molecularly with each other, as well as change and compact their internal structure. A unique and innovative technological process that involves an accelerated version metamorphic process by which natural stone is created, when the minerals are exposed for millennia to extreme pressure and extreme heat.

---

*In the span of a few hours, Dekton® emulates what took nature thousands of years thanks to the exclusive TSP technology.*

The extreme compaction and sintering process, which are exclusive to Dekton®, allows for extremely low porosity in the material. This reduced porosity and absence of microdefects that cause stress or weak points, are some of the differentiating qualities of Dekton® vs other surfacing materials.





## Dekton® Benefits



High UV  
Stability



Highly Resistant  
to Scratches



High Stain and  
Graffiti resistance



Excellent Fire and  
Heat Resistance



Freeze/Thaw  
resistant



High Impact  
Resistance



Extremely Low  
Porosity



Dimensional  
Stability



Non-Combustible



High Resistance  
to Hydrolysis

## Customize Architectural Surfaces

With Ultra compact Surfacing we are able to create custom colors, images, designs, logos, and replicate the aesthetics of many different natural and man-made materials!

The possibilities are endless!™





## Dekton® Warranty

Dekton® is the only brand that provides you with a certified written warranty. Only Cosentino, a global company in surface production, can stand out once again by providing a 25-year real warranty for Dekton® products. Cosentino once again demonstrates its innovation by offering consumers a long warranty. Trusting in high-performance materials such as Dekton for facades is synonymous with success, reliability and warranties.

Below we detail the steps to follow and the requirements needed to fulfill the terms of the Dekton® warranty.



See warranty for details



Aura Book Match - NATURAL

## Certificates

Dekton® is internationally certified, guaranteeing maximum safety and durability.

ETA 14/0413



BBA



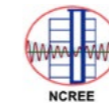
ISO 14001



ISO 9001



NCREE Earthquakes



A1 Fire Classification



EPD



DoP



NOA



HPD



NSF



VOC Eurofins



VOC Greenguard



VOC Greenguard Gold



Kosher



CSTB



ICC-ES\*

\*In process.

# Why use Dekton® for Facades?

Because of its design possibilities and technical features, Dekton® is the ideal surfacing product for any façade project.

## Design

### Infinite colors and designs

Endless color varieties, different textures, and high quality graphics, with the possibility of customized designs and colors thanks to our CustomColor department.

### Wide range of thicknesses

Different thicknesses of 4, 8, 12, 20, and 30mm depending on project and system requirements

### Large format

With a maximum panel size of 126" x 56" Dekton can span the distance between floors with a single panel, reducing joints and lowering the installation time.

### Personalized

Possibility of making custom facade modulations with customized panels or pieces directly assembled from the factory.

### Variety of cuts

#### Standard formats

Maximum use of the slab. Reduction in the number of joints, thus achieving a monolithic surface.



Halo - XGloss SOLID

## Technical Features

Dekton's extreme durability makes it the ideal surface for demanding applications, like a building facade.



### High mechanical resistance

Excellent performance in wind and resulting impacts.



### Low and easy maintenance

As a material, Dekton offers low maintenance using conventional cleaning products and tools.



### High chemical resistance.

Extreme resistance to harsh chemicals, which can also be used to remove difficult marks and stains, when necessary.



### Apt for adverse weather conditions

Ideal performance in freeze/thaw environments.



### Stain- and graffiti-resistant

Nearly zero porosity (<0.2%), preventing penetration of stains and external agents.



### UV-ray resistant

There is no degradation of color due to ultraviolet exposure



### Unbeatable performance in fire

A1 classification certification and A2 safety mesh.

## Service and Technical Support

### Initial Help and Technical Analysis

#### Detailed study of all of the parts of your project:

- ▶ Assignment of a Project Manager
- ▶ Team of more than 15 experts will help evaluate and price your project.
- ▶ Software for the management of the project and plans.
- ▶ Multiple different teams to overlook the project
- ▶ Certificates and testing results available.
- ▶ Availability of receiving any certificate.
- ▶ Help and solutions for LEED v4 certification.

### Quotation and Technical Proposal

- ▶ Study of the proposals from the client and able to give recommendations for changes when necessary.
- ▶ Recalculation of the lay-out to offer additional options to reduce material waste and decrease pricing.
- ▶ Detailed budget proposals.
- ▶ Quick turnaround for pricing and proposals.
- ▶ Rapid budget execution.
- ▶ Coordination of any safety documentation.

### Layout and Mock Up



Availability of Digital 3D with the final project rendering



Sending of samples



Possibility of onsite Mock Up.



### Quality Production and Control

#### Project-Factory Warranty

- ▶ Project Manager.
- ▶ Client-Production Dialog.
- ▶ Translation of specifications from Project to factory.
- ▶ Validation of production plans by the customer.
- ▶ Plan of Production dates.
- ▶ Photographs of shipments before loading.

#### Factory for Finished Goods Manufacturing

- ▶ More than 140 employees.
- ▶ Maximum Capacity of 240,000 sqf CTS / month (approx. 5,500 slabs). Average production: 100,000 sqf - 120,000 sqf per month.

#### Project Factory. Facades, flooring and tiling

More than 187 employees Maximum capacity 1,500,000 sqft. per month.

Automatic tile line  
Measurements: From 12"x6" to 79"x47"  
Average capacity: 10,000 sqft/day

Automatic large format line  
Measurements: From 24x24" to 126x56"  
Capacity: 30,000 sqft/day

#### Project Based Options

Development, supply and placement of all types of grooves, holes for anchors, trims, etc. Meshing of the panels to improve safety and mechanical properties of the material.

#### Quality Control

Guarantee of deadlines and link between the project and factory thanks to our Project Managers.

- ▶ Daily review of Production Dates Plans.
- ▶ Quality Control during the production and fabrication of the panels
- ▶ Quality Control in the packaging and photos of the shipments before loading
- ▶ Support in the reception of the material/piece currently being worked on by our technicians depending on the project.





### Execution and Technical Support

- ▶ Recommendations regarding handling and transportation of panels.
- ▶ Manuals on placement, cleaning and maintenance, special works, etc. available to the customer.
- ▶ Technical support during the execution of the project. Possibility of the Project Manager visiting the work site for support or evaluation of changes.
- ▶ Official and public documentation on the material, application, Use, Maintenance. Available on our website: [Pro.cosentino.com/s/facade](http://Pro.cosentino.com/s/facade)

### Post-Sales Service and Warranties

- ▶ Monitoring and traceability of all our shipments until the destination.
- ▶ Guaranteed delivery of our products to customers.
- ▶ Transportation insurance to guarantee the perfect state of our shipments.
- ▶ Standard warranties of the materials made by Cosentino.
- ▶ "Custom" warranties for each project depending on the needs.

#### Cosentino is committed to the end

- ▶ 25 year warranty.
- ▶ Customer service from our Corporate team.
- ▶ Customer service from inception to final project execution.

## Logistics

### Packaging

Personalized packaging:

- ▶ Weight per package (weight limit).
- ▶ Measurements per package (measurement limit).
- ▶ Design (Vertical, horizontal, etc.).
- ▶ Materials. (Possibility ECO- Packaging).
- ▶ Organization (by lots, by items, by size, etc.).
- ▶ Shipments by manufacture order
- ▶ Information sheets (safety, material, use, maintenance, etc.)

Support for construction efficiency:

- ▶ Packing list with positioning order/sequencing of panels.
- ▶ Material Layout

### Shipping

- ▶ Logistics and Planning Team of more than 170 people.
- ▶ More than 40 Containers and 20 Trucks on a daily basis.
- ▶ Preferential agreements with the main shipping companies based around the world.
- ▶ Inland port at our Facilities with a capacity for more than 150 containers.
- ▶ Quick passage through customs and ports



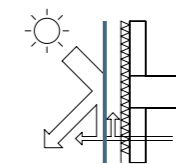


## Systems for Facades

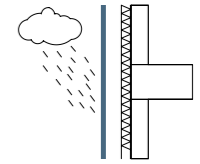
With Dekton® you can form projects and design globally: it's an ideal material for all types of environments and spaces, achieving (if you so desire) continuity in the architecture by breaking down the boundaries between exterior and interior. The facade is the building's surface. With Dekton® we offer both direct adhere facade and ventilated facade solutions.

The **direct adhere facade** is a system that allows to refurbish buildings with good aesthetic and energetic results. This type of set exterior refurbishing adapts to the building's contours, even the most complicated ones. Dekton® as a direct adhere surface in new construction projects or refurbishing guarantee the necessary protection for the system.

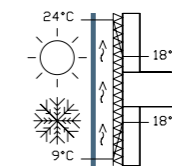
The **ventilated facade** is a construction solution that allows for the establishment of a physical separation between the exterior and the interior wall of the building. This separation creates an open chamber that allows the renewal of the air, which implies a series of thermal, acoustic and functional advantages that lend the building a great added value.



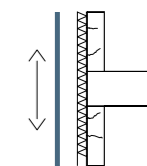
Energy Saving



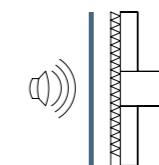
Water and moisture prevention



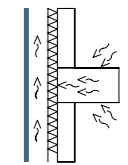
Protection of Supporting Wall



Avoid thermal bridges and condensation



Soundproofing



Thermal Isolation





## Ventilated Facade - DKT1 Undercut Anchor System

Discreet fixing system by using metal clamps anchored to the panel via an undercut screw on the back of the pieces.

The panels are fixed to the wall by hanging the clamps in the horizontal profiles.

Each plate has two adjustment points and a fixed point at the top, which makes possible the adjustment while preventing undesirable movements of the entire plate.

The DKT1 system lends lots of freedom of design and a wide possibility of combinations to be able to modify the size of the boards both horizontally and vertically.

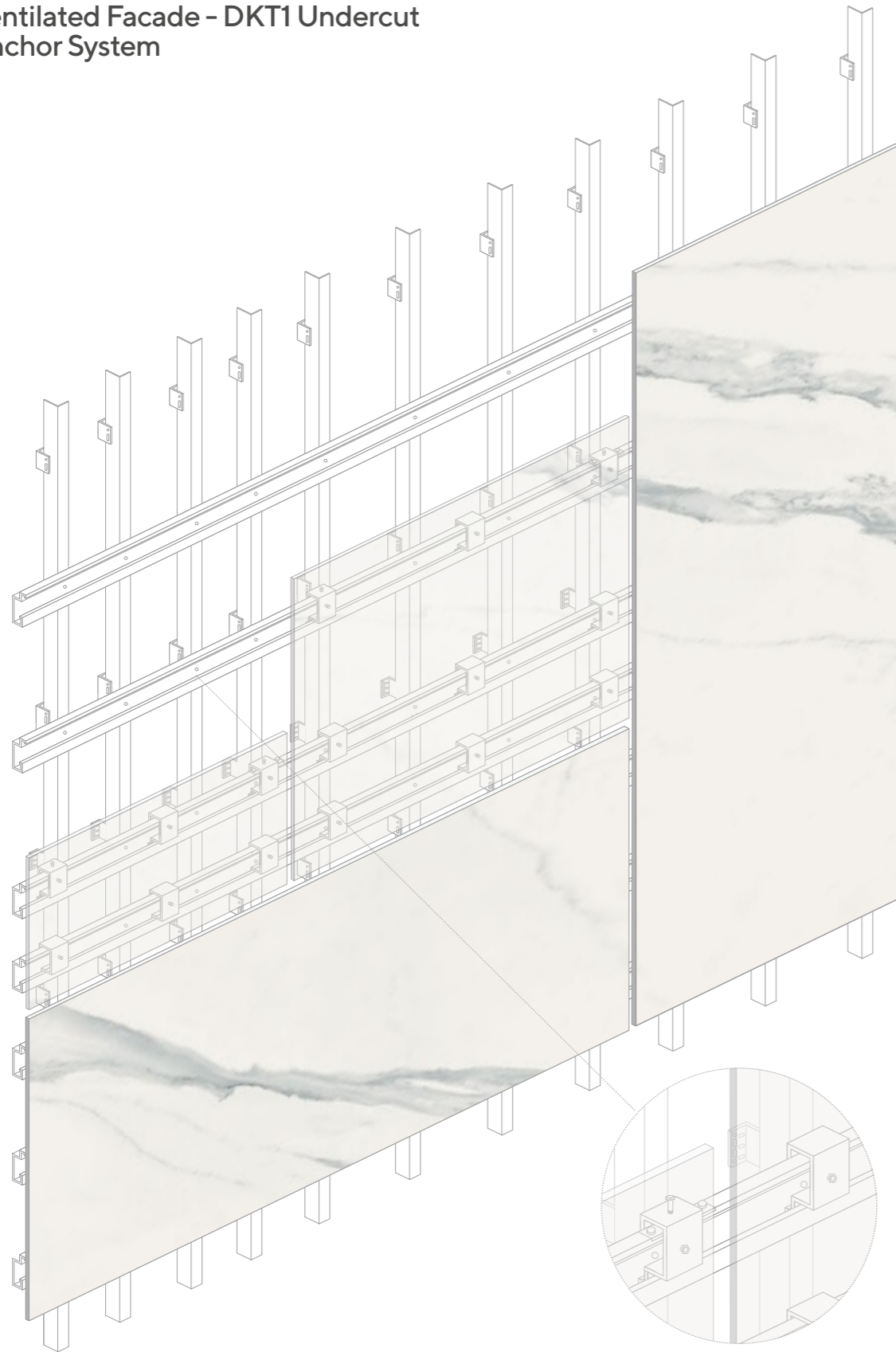
### Available

Thickness	Available	Notes
8 mm	✓	Some limitations may apply*
12 mm	✓	Unlimited
20 mm	✓	Unlimited

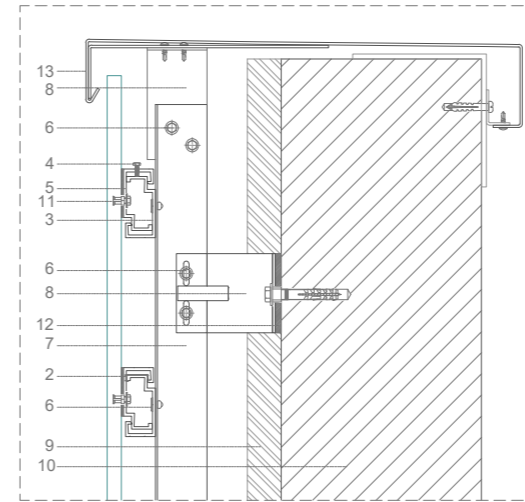
\*Recommended for direct adhere applications



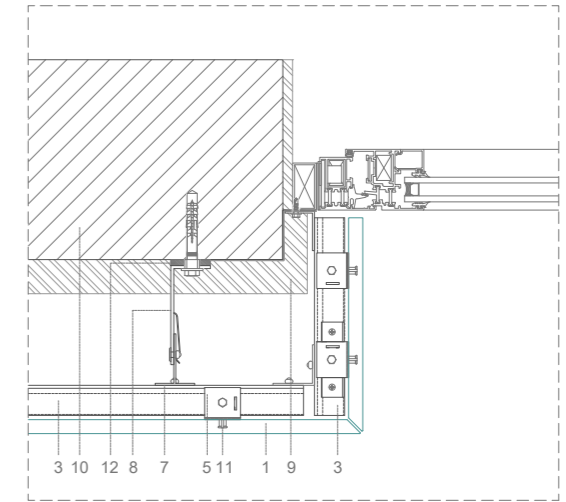
# Ventilated Facade - DKT1 Undercut Anchor System



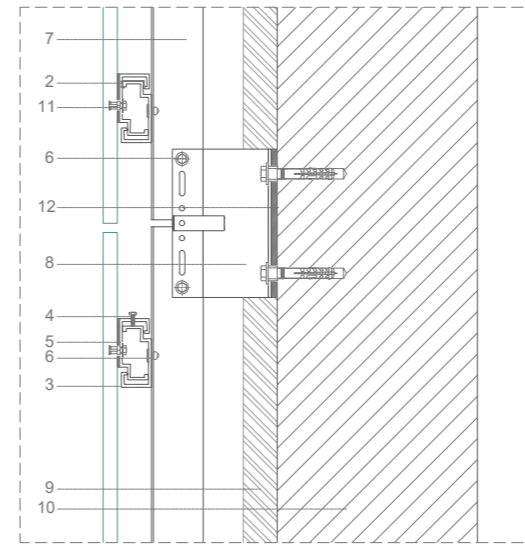
## Construction Detail



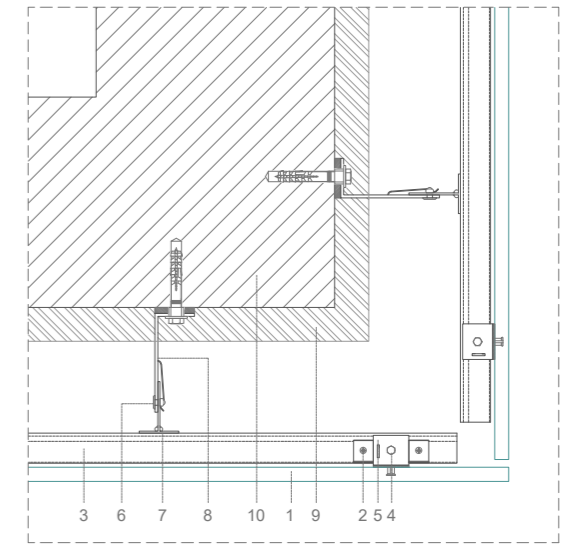
Vertical section



Horizontal section



Vertical section



Horizontal section

- |                               |  |
|-------------------------------|--|
| 1. Dekton                     | 8. "L" Separator                                   |
| 2. Fixed attachment clip      | 9. Thermal isolation                               |
| 3. Horizontal profile         | 10. Support wall                                   |
| 4. Drilling screw             | 11. Keil anchor or other approved anchoring system |
| 5. Adjustable attachment clip | 12. Thermal bridge break                           |
| 6. Auto-drilling screw        | 13. Padding  |
| 7. Vertical profile           |  |



## Ventilated Facade - DKT2 Continuous Grooved Edge System

DKT2 concealed fixing system by using a continuous profile housed in grooves made in the horizontal edges of the panels.

The horizontal profiles that serve as fixing for the plates are anchored on a vertical structure.

Plate regulation is achieved thanks to the continuous horizontal profiles located in the slots.

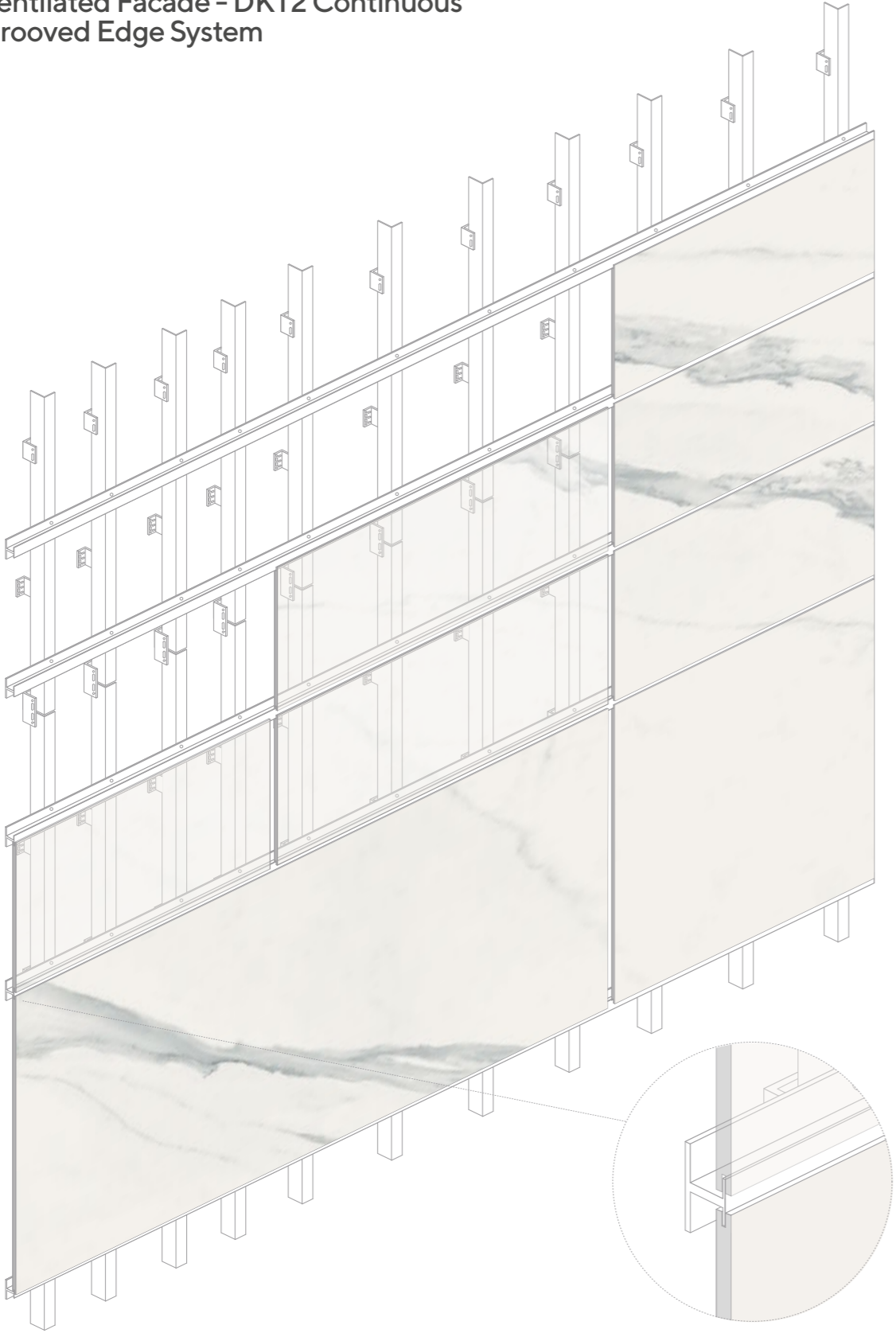
Especially apt for large façade surfaces with horizontal modulations. There are maximum panel sizes with this type of system.

### Available

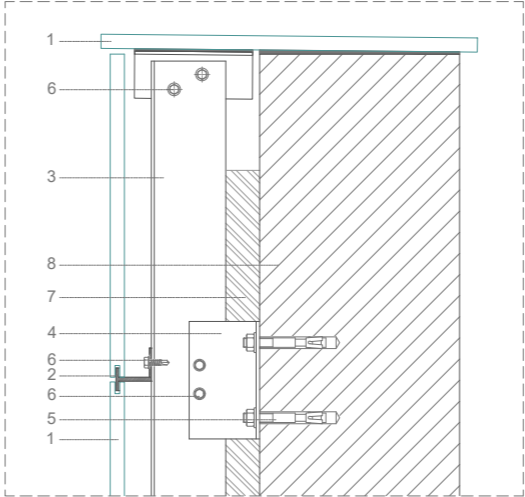
Thickness	Available
12 mm	✓
20 mm	✓



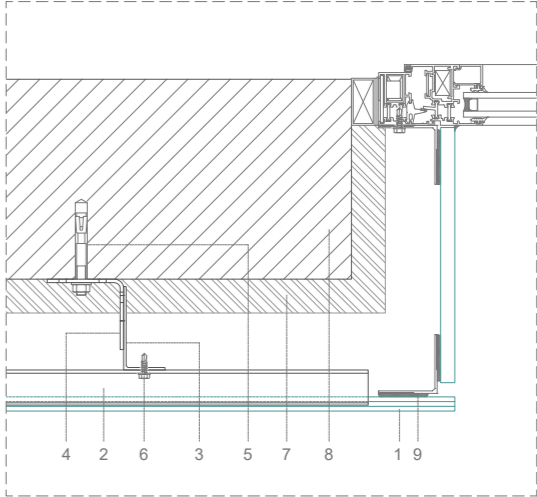
Ventilated Facade - DKT2 Continuous Grooved Edge System



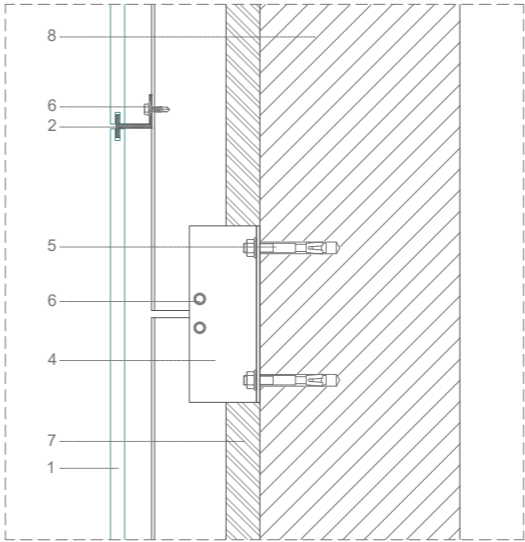
Construction Detail



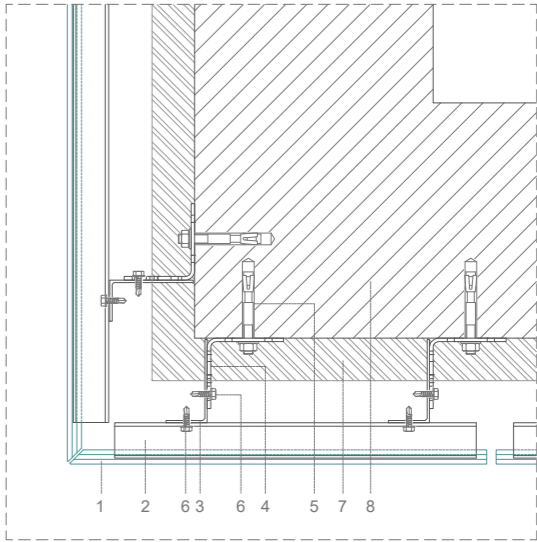
Vertical section



Horizontal section



Vertical section



Horizontal section

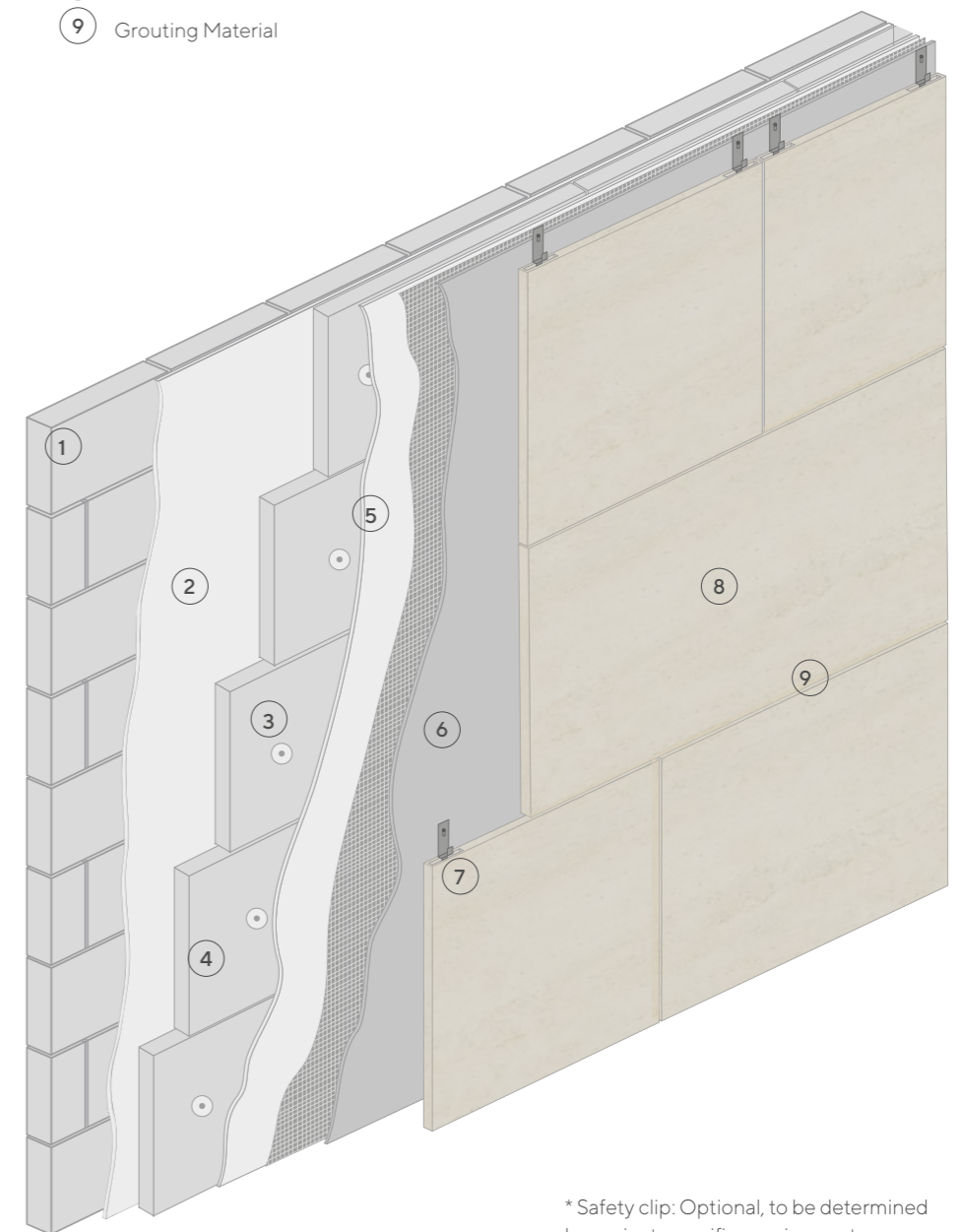
- 1. Dekton®
- 2. Horizontal profile
- 3. Vertical profile
- 4. "L" Separator
- 5. Mechanical anchor
- 6. Auto-drilling screw
- 7. Thermal insulation
- 8. Structural Wall
- 9. Adhesive





## Direct Adhere Facade - DKS External Thermal Insulation System

- |                        |                                |
|------------------------|--------------------------------|
| ① Support Wall         | ⑥ Adhesive                     |
| ② Adhesive             | ⑦ Safety Clips                 |
| ③ Insulation           | ⑧ Exterior Dekton Facade Tiles |
| ④ Mechanical Fastening | ⑨ Grouting Material            |
| ⑤ Regularization Layer |                                |



\* Safety clip: Optional, to be determined by project-specific requirements.





## References

### Gunni & Trentino Flagship Store

**Material**

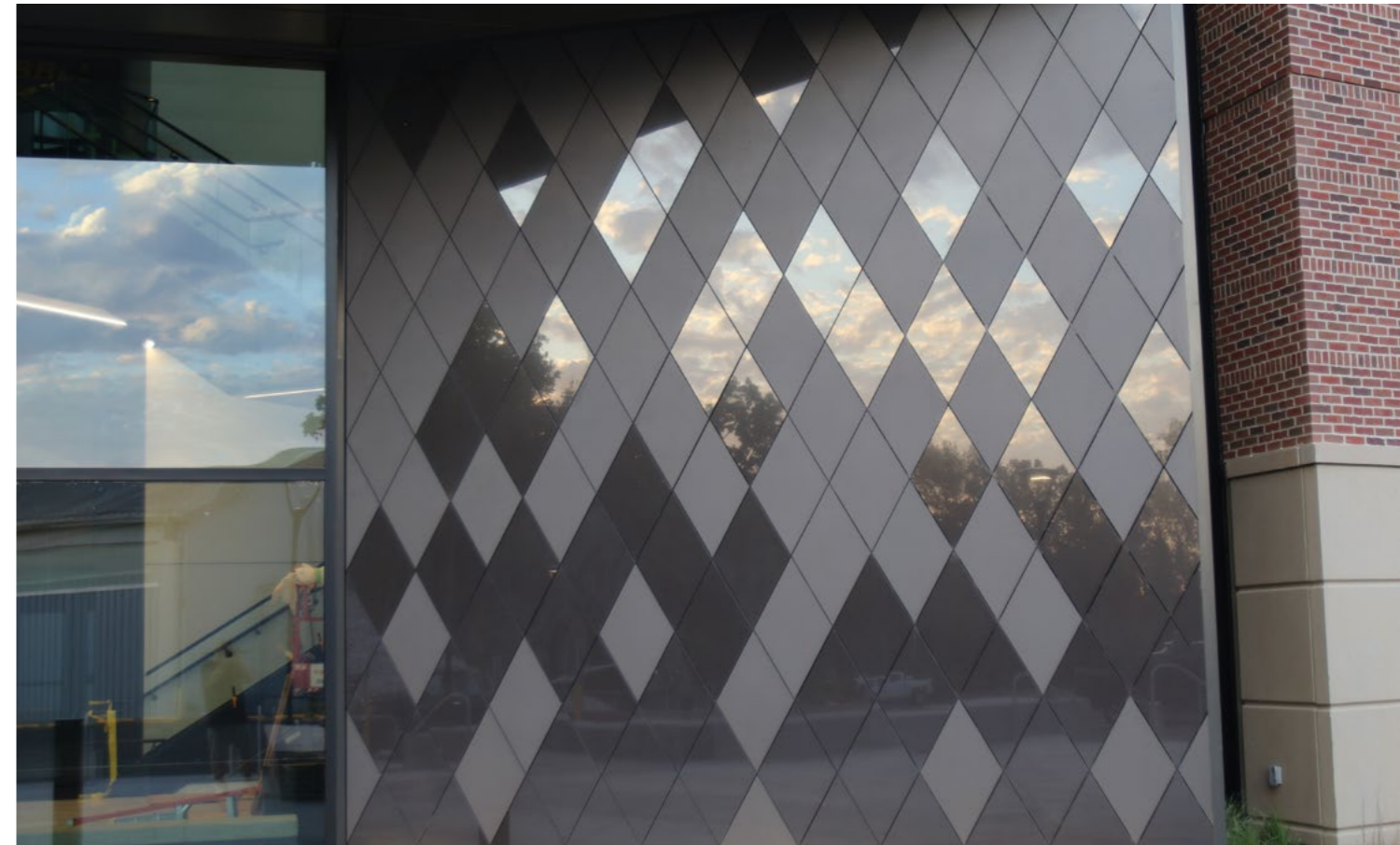
6460 sqft Dekton XGloss Halo  
Polished CTS hexagonal pieces  
1080 sqft Dekton Domoos

**Thickness**

1.2 cm







**University of Missouri**  
Columbia, Missouri

**Material**  
6,729 sqft Dekton Domoos & Spectra  
**Thickness**  
1.2 cm





**Porsche Design Boutique**  
Illinois

**Material**

Dekton® Domoos CTS Cut-to-Size 5ft. x 10ft.

**Thickness**

1.2 cm





**Totzeret**  
Tel Aviv, Israel

**Material**  
199,875 sqft Dekton® Totzeret Items cut to measure  
Custom colors: 7

**Thickness**  
1.2 cm







**Armonk Professional Center**  
New York City

**Material**  
1350 sqft Dekton Trilium

**Thickness**  
1.2 cm





**The Charles**  
Atlanta, Georgia

**Material**

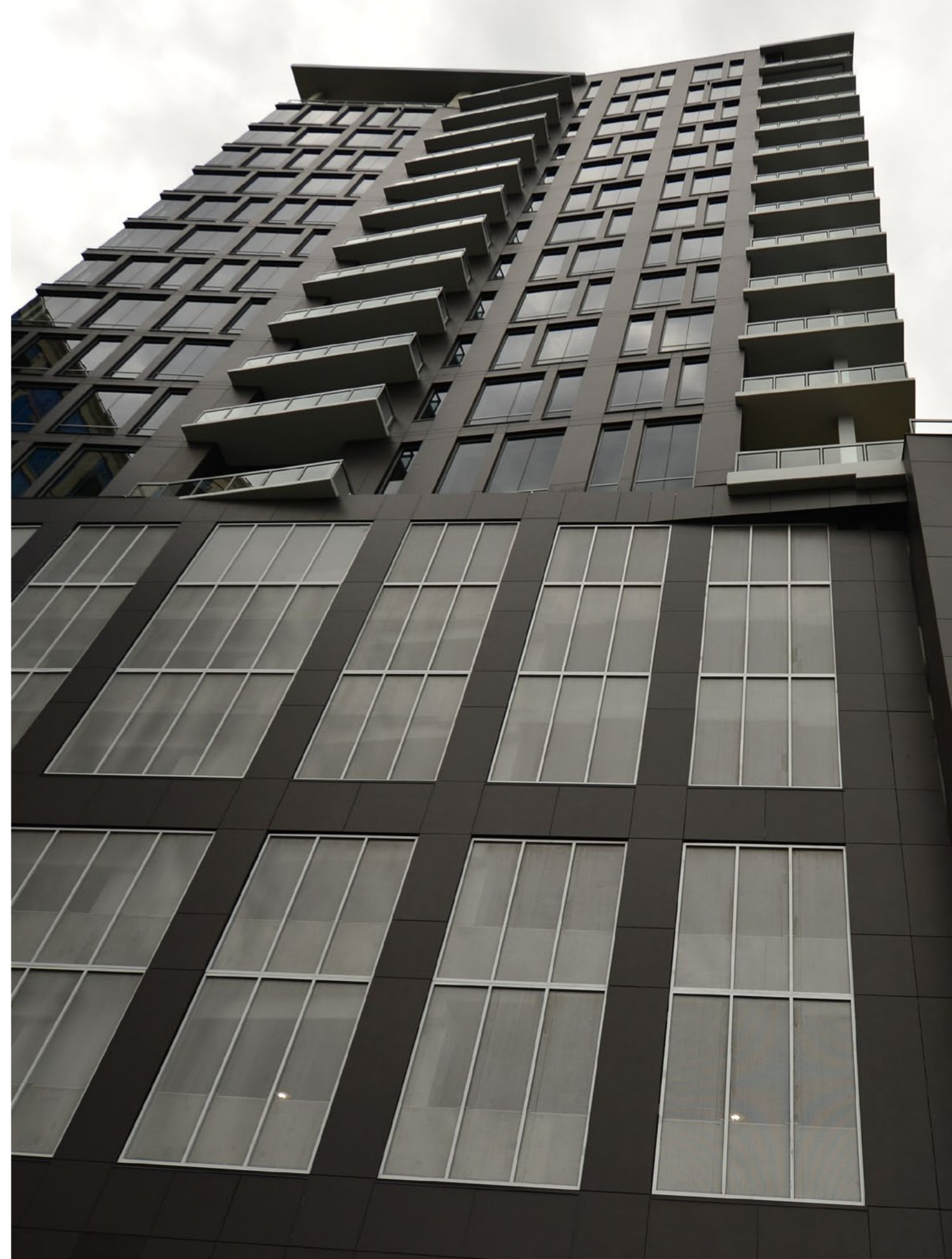
Dekton® Domoos CTS Cut-to-Size 5ft. x 10ft.

Dekton® Danae CTS Cut-to-Size 5ft. x 10ft.

12,000 sq.ft.

**Thickness**

1.2 cm







**Skallan Private Villa**  
Sweden

**Material**  
5380 sqft Dekton® Kadum

**Thickness**  
1.2 cm





**Schauffauserstrasse**  
Zurich, Switzerland

**Material**  
5,920 sqft Dekton Sirius

**Thickness**  
2 cm







## MK8 – Kap West Munich

### Material

135625 sqft Dekton Keon  
Facade through independent modules. Pieces cut to size and pre-assembled in the factory to create modules that are placed directly on site.

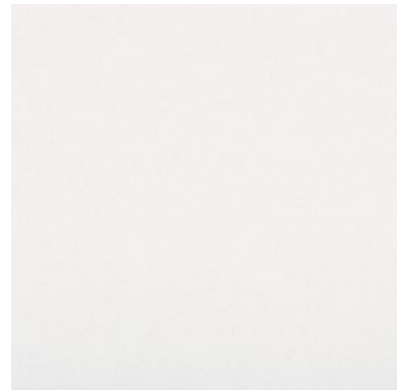
### Thickness

1.2 cm



# Color Chart

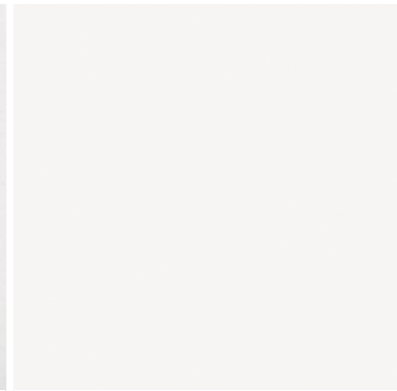
Ultra Texture Ultra Mate Velvet Texture XGloss Eco Dekton Thickness 3 cm



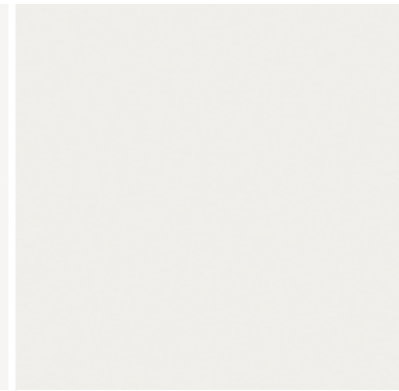
Nayla NATURAL Collection



Vienna XGLOSS Basiq



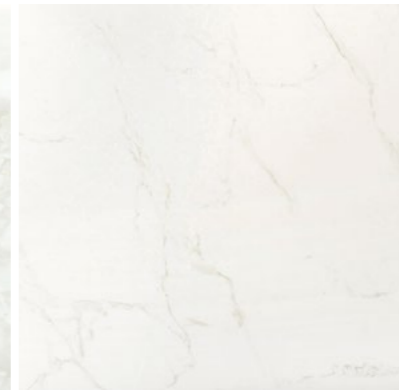
Zenith SOLID Collection



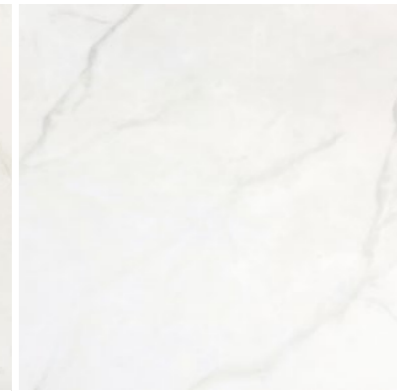
Halo XGLOSS Solid



Vapour NATURAL Collection



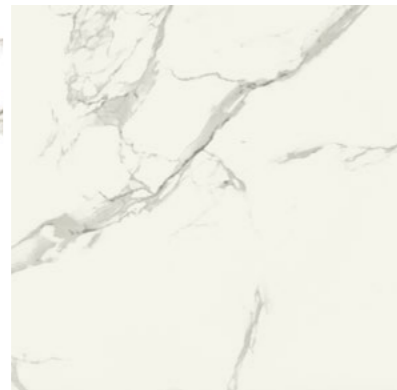
Glacier XGLOSS Natural



Tundra XGLOSS Natural



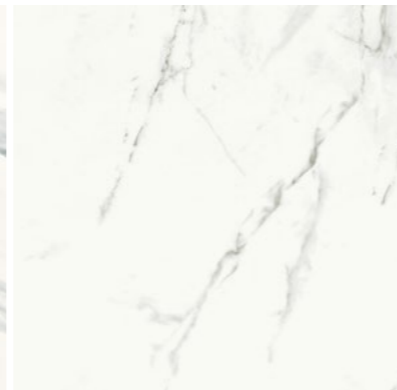
Aura 15 NATURAL Collection



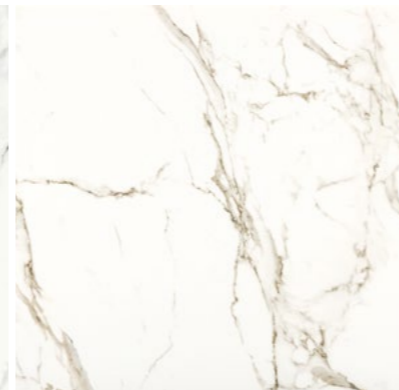
Natura XGLOSS Natural



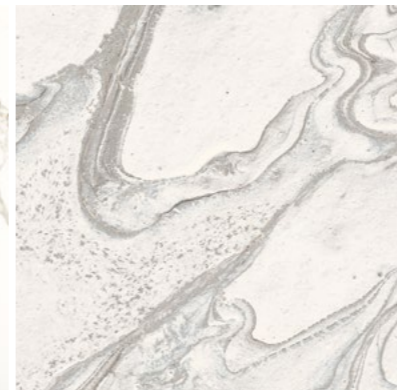
Opera NATURAL Collection



Kairos NATURAL Collection



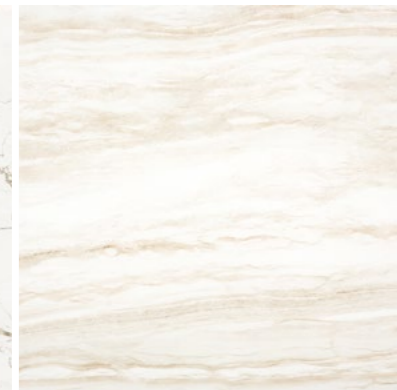
Entzo NATURAL Collection



Sky LIQUID Collection



Bedrock NATURAL Collection



Sand Drift NATURAL Collection



Portum NATURAL Collection



Bergen STONIKA Collection



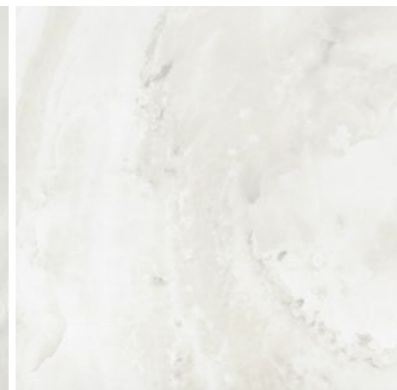
Olimpo STONIKA Collection



Sasea NATURAL Collection



Helena STONIKA



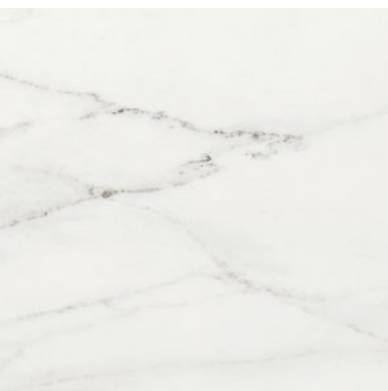
Fiord XGLOSS Natural



Lunar INDUSTRIAL Collection



Nilium INDUSTRIAL Collection



Rem NATURAL Collection



Kovik NATURAL Collection



Shell LIQUID Collection



Makai WILD Collection



Arga STONIKA Collection



Taga STONIKA Collection



Edora NATURAL Collection



Danae NATURAL Collection





Keon TECH Collection



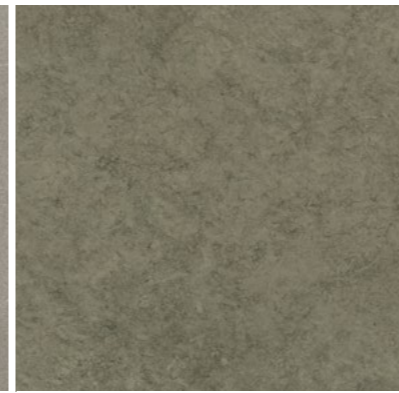
Splendor XGLOSS Solid



Ventus SOLID Collection



Sirocco NATURAL Collection



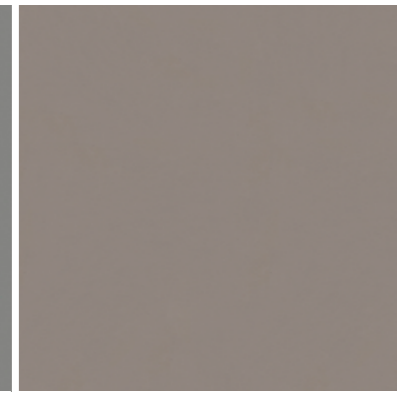
Vegha NATURAL Collection



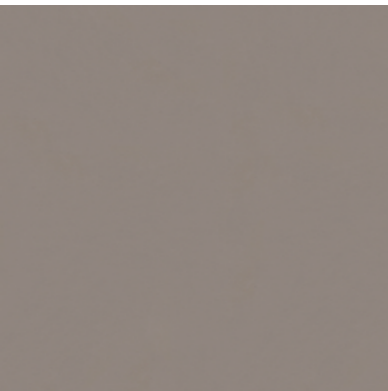
Blaze XGLOSS Solid



Korus SOLID Collection



Galema SOLID Collection



Lumina XGLOSS Solid



Strato TECH Collection



Kira NATURAL Collection



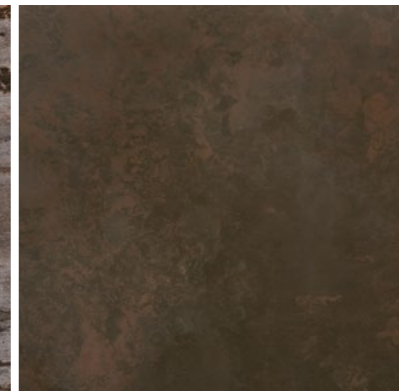
Korso STONIKA Collection



Khalo STONIKA Collection



Trilium INDUSTRIAL Collection



Keranium TECH Collection



Soke INDUSTRIAL Collection



Soke INDUSTRIAL Collection



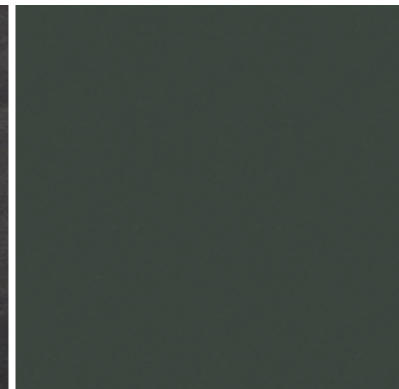
Vera NATURAL Collection



Orix INDUSTRIAL Collection



Bromo NATURAL Collection



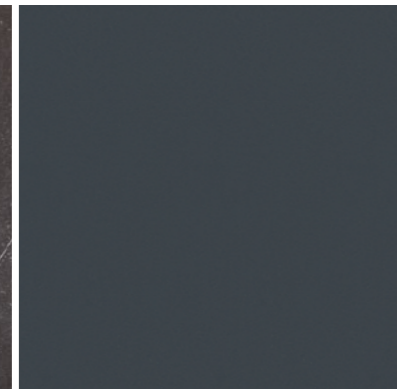
Feroe Chromica Collection



Kelya NATURAL Collection



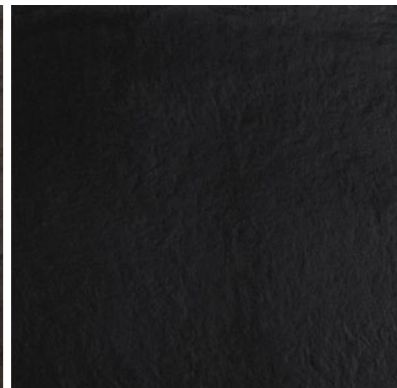
Fossil NATURAL Collection



Baltic STONIKA Collection



Radium INDUSTRIAL Collection



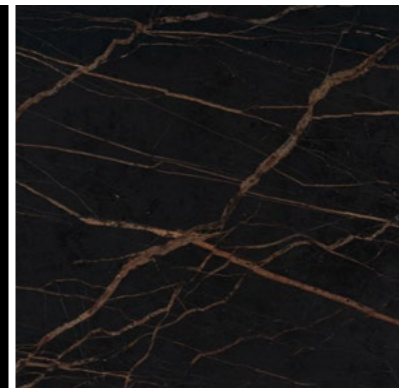
Sirius SOLID Collection



Embers LIQUID Collection



Domoos SOLID Collection



Laurent NATURAL Collection



Spectra XGLOSS Solid



# Technical Characteristics

TRIAL	REGULATION	DETERMINATION	UD	FAMILY I	FAMILY II	FAMILY III
Humidity expansion	ASTM C370	Average humidity expansion	%	0.020	0.005	0.004
Rupture resistance	ASTM C648	Average expansion by fracture	lbf	3.963	4.896	3.932
Flexibility properties	ASTM C674	Average rupture module	psi	10.828	13.997	9.005
Water absorption, bulk density, porosity)	ASTM C373	Average water absorption	%	0.03 (non-porous)	0.05 (non-porous)	0.01 (non-porous)
Adhesion and friction coefficient (slip resistance)	ASTM C1028	Dry adhesion and friction coefficient	-0	0.800	0.770	0.77
		Dry and wet adhesion and friction coefficient	-0	0.660	0.560	0.69
Wear resistance (TABER Abrasion)	ASTM C501	Average wear index because of abrasion		182.23	337	240
Resistant to thermal shock	ASTM C484	Defects	-	No defects	No defects	No defects
Adhesion strength	ASTM C482	Average adhesion strength	psi	423	437	357
Resistance to chemical substances	ASTM C650	Daily use cleaning products				
		Acetic acid, 3% (v/v)	-	Does not affect	Does not affect	Does not affect
		Acetic acid, 10% (v/v)	-	Does not affect	Does not affect	Does not affect
		Ammonium chloride, 100 g/l	-	Does not affect	Does not affect	Does not affect
		Citric acid solution, 100 g/l	-	Does not affect	Does not affect	Does not affect
		Lactic acid, 5% (v/v)	-	Does not affect	Does not affect	Does not affect
		Phosphoric acid, 3% (v/v)	-	Does not affect	Does not affect	Does not affect
		Phosphoric acid, 10% (v/v)	-	Does not affect	Does not affect	Does not affect
		Sulfamic acid, 30 g/l	-	Does not affect	Does not affect	Does not affect
		Sulfamic acid, 100 g/l	-	Does not affect	Does not affect	Does not affect
		Chemical pool products	-	Does not affect	Does not affect	Does not affect
		Sodium hypochlorite solution, 20 mg/l	-	Does not affect	Does not affect	Does not affect
		Acids and bases	-	Does not affect	Does not affect	Does not affect
		Hydrochloric acid solution, 3%	-	Does not affect	Does not affect	Does not affect
		Hydrochloric acid solution, 18% (v/v)	-	Does not affect	Does not affect	Does not affect
		Potassium hydroxide, 30 g/l	-	Does not affect	Does not affect	Does not affect
Potassium hydroxide, 100 g/l	-	Does not affect	Does not affect	Does not affect		

TRIAL	REGULATION	DETERMINATION	UD	FAMILY I	FAMILY II	FAMILY III
Specific density and absorption	ASTM C97	Average absorption percentage of by weight	%	0.020	0.040	0.02
		Average density	lb/ft <sup>2</sup>	156	160.63	157.6
Rupture module	ASTM C99	Average condition of dry rupture	psi	8128	9.042	7.369
		Average condition of wet rupture	psi	7.490	8.446	7.480
Flexibility resistance	ASTM C880	Average condition of dry flexibility	psi	6.840	3.118	5.858
		Average condition of wet flexibility	psi	6.205	4.187	5.119
Resistant to compression	ASTM C170	Average strength condition of dry compression	psi	34.409	>55.000	44.882
		Average strength condition of wet compression	psi	17.823	>55.000	40.165
Wear-resistant	ASTM C1353	Average abrasion index	-	349	349.48	265.8

\*View references by families.

TITLE	DESIGNATION CODE	UNITS	RESULT
Freeze Thaw of Panels	ASTM C1026	300 Cycles	Pass / No Damage
Full System Temperature Cycling with Water Spray	Temperature Cycling	25 Cycles	No Damage
Strength of Anchor in Panel (Negative) Strength of Anchor in Panel (Positive) Strength of Anchor in Panel (Lateral)	ASTM C1354	LB LB LB	496 932 1,368
Test to Determine Combustibility	ASTM E136	N/A	Noncombustible
Flame Spread and Smoke Development	ASTM E84	N/A	Class A



Get inspired and find resources at [Pro.cosentino.com](http://Pro.cosentino.com)



\* See specific warranty conditions.

\*\* To obtain more information about hues with NSF certificate, please visit [www.nsf.org](http://www.nsf.org)

\*\*\* Colors on this brochure are indicative. Please refer to real samples or slabs.

A product designed by **COSENTINO**

**COSENTINO NORTH AMERICA HEADQUARTERS**  
355 Alhambra Circle Suite 1000,  
Coral Gables, FL 33134, United States of America  
786.686.5060  
@CosentinoUSA  
[www.cosentino.com](http://www.cosentino.com)