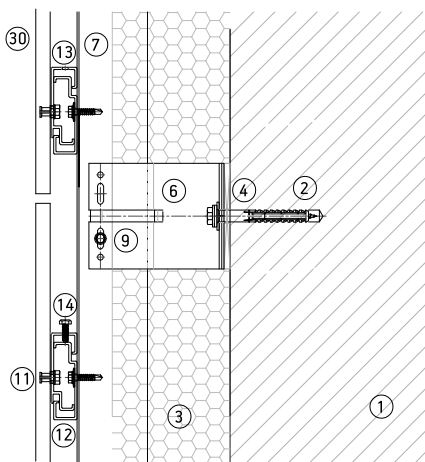
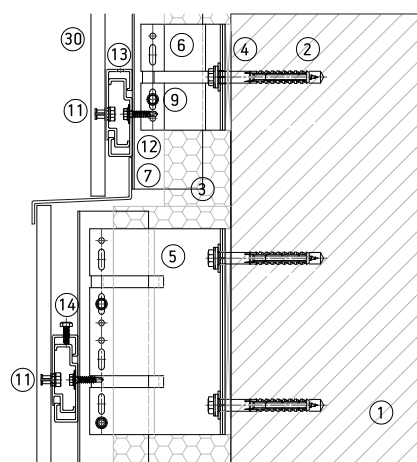


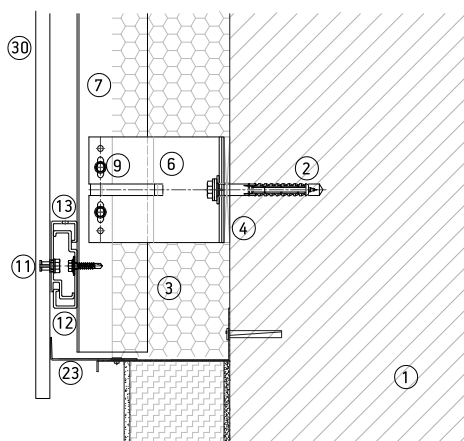
DKT1.1. D4. Parapet Detail.



DKT1.1. D2. Horizontal joint.



DKT1.1. D3. Horizontal profiles joint.



DKT1.1. D1. Ground Level.

- | | |
|-----------------------------------|-------------------------------|
| 1. SUPPORTING WALL. | 16. MIDDLE EDGE PROFILE/CLIP. |
| 2. BRACKET ANCHOR. | 17. BOTTOM/TOP VISIBLE CLAMP. |
| 3. INSULATION. | 18. MIDDLE VISIBLE CLAMP. |
| 4. INSULATOR PAD. | 19. INTERIOR BACK CLAMP |
| 5. FIXED BRACKET. | 20. EXTERIOR BACK PROFILE |
| 6. ADJUSTABLE BRACKET. | 21. CHEMICAL ANCHOR SYSTEM |
| 7. L PROFILE. | 22. SECURITY FIXING |
| 8. T PROFILE. | 23. VENTILATION PROFILE |
| 9. SD SCREW. | 24. LINTEL |
| 10. RIVET. | 25. JAMB |
| 11. UNDERCUT ANCHOR. | 26. WINDOW SILL |
| 12. HORIZONTAL RAIL. | 27. TOP HAT |
| 13. C HANGER. | 28. CORNER PROFILE |
| 14. C HANGER ADJUSTABLE. | 29. BONDING ADHESIVE |
| 15. BOTTOM/TOP EDGE PROFILE/CLIP. | 30. DEKTON |

DESCRIPTION:

CONSTRUCTION DETAILS DEKTON KEIL UNDERCUT ANCHOR. VERTICAL SECTIONS. BOTTOM, HORIZONTAL JOINTS AND TOP HAT

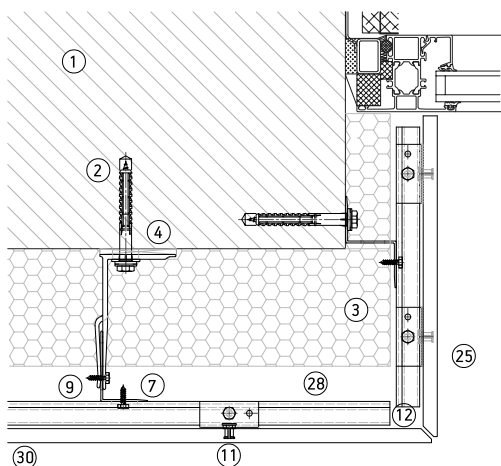
SYSTEM:
DKT1.1

SCALE:
1/10

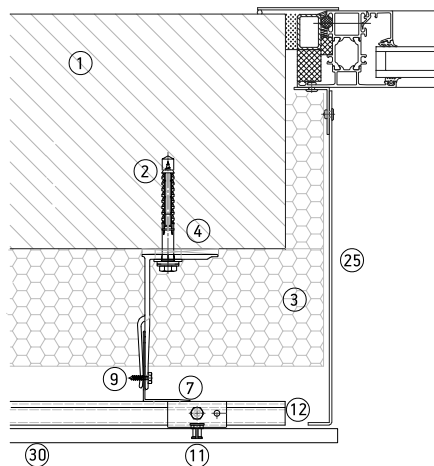
DATE:
v0. 09/20

These technical details has been developed by Cosentino as a suggestion to solve different points in a general way. They need to be adapted and coordinate with support in each project by a competent technician. If you need support to adapt them to a project do not hesitate to contact Cosentino.

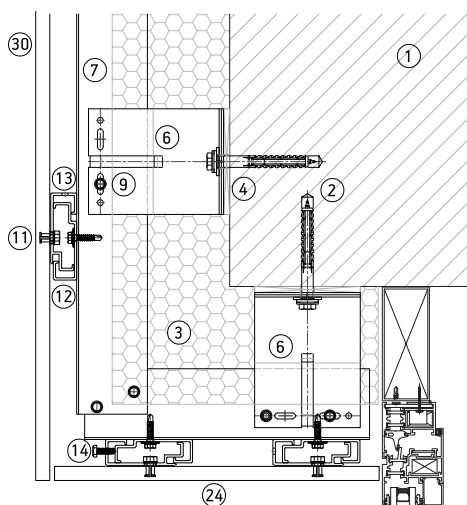




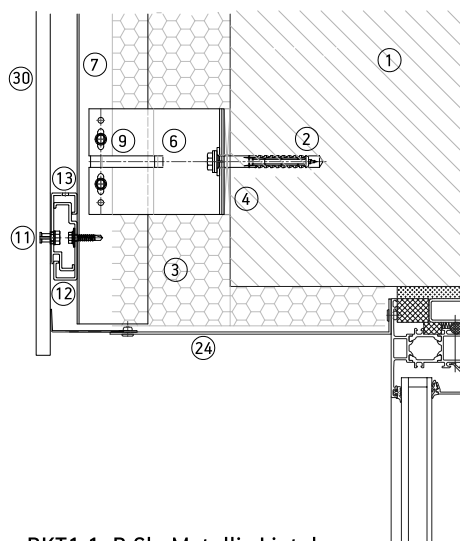
DKT1.1. D 11a. Dekton jamb.



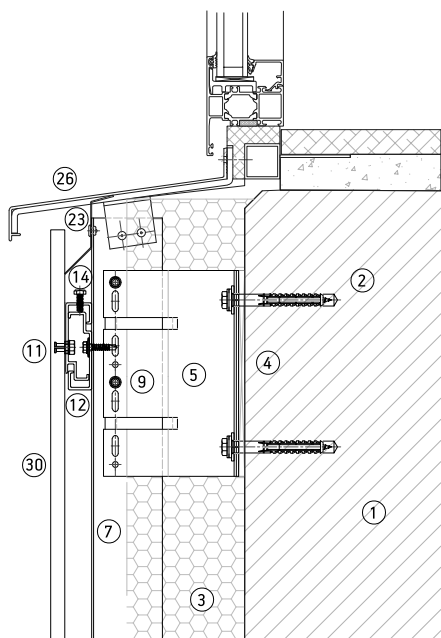
DKT1.1. D 11b. Metallic jamb.



DKT1.1. D 6a. Dekton lintel.



DKT1.1. D 6b. Metallic Lintel.



DKT1.1. D 5b. Metallic Windows Sill.

- | | |
|-----------------------------------|-------------------------------|
| 1. SUPPORTING WALL. | 16. MIDDLE EDGE PROFILE/CLIP. |
| 2. BRACKET ANCHOR. | 17. BOTTOM/TOP VISIBLE CLAMP. |
| 3. INSULATION. | 18. MIDDLE VISIBLE CLAMP. |
| 4. INSULATOR PAD. | 19. INTERIOR BACK CLAMP |
| 5. FIXED BRACKET. | 20. EXTERIOR BACK PROFILE |
| 6. ADJUSTABLE BRACKET. | 21. CHEMICAL ANCHOR SYSTEM |
| 7. L PROFILE. | 22. SECURITY FIXING |
| 8. T PROFILE. | 23. VENTILATION PROFILE |
| 9. SD SCREW. | 24. LINTEL |
| 10. RIVET. | 25. JAMB |
| 11. UNDERCUT ANCHOR. | 26. WINDOW SILL |
| 12. HORIZONTAL RAIL. | 27. TOP HAT |
| 13. C HANGER. | 28. CORNER PROFILE |
| 14. C HANGER ADJUSTABLE. | 29. BONDING ADHESIVE |
| 15. BOTTOM/TOP EDGE PROFILE/CLIP. | 30. DEKTON |

These technical details has been developed by Cosentino as a suggestion to solve different points in a general way. They need to be adapted and coordinate with support in each project by a competent technician. If you need support to adapt them to a project do not hesitate to contact Cosentino.



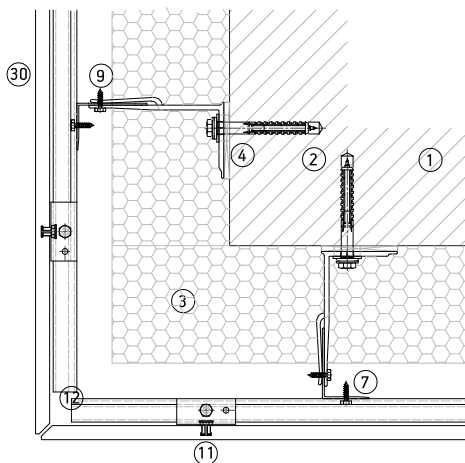
DESCRIPTION:

CONSTRUCTION DETAILS DEKTON KEIL UNDERCUT ANCHOR. VERTICAL SECTIONS. WINDOW DETAILS: JAMB,LINTEL AND SILL.

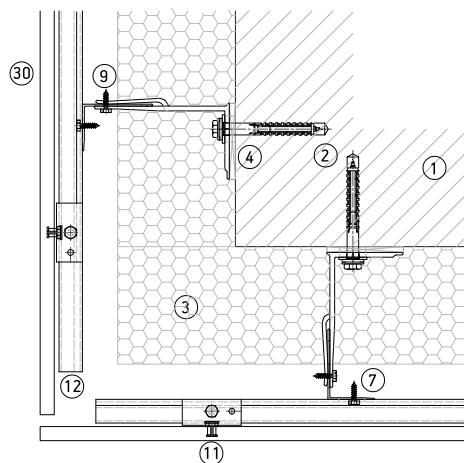
SYSTEM:
DKT1.1

SCALE:
1/10

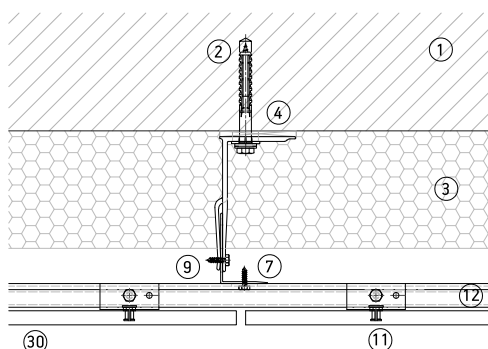
DATE:
v0. 09/20



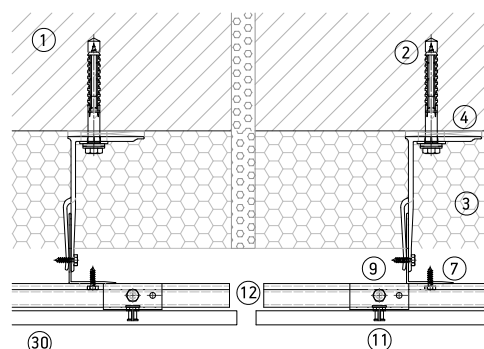
DKT1.1. D 7a. External corner beveled.



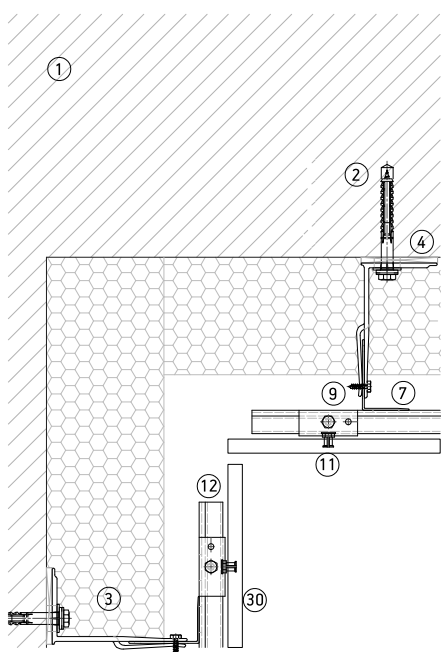
DKT1.1. D 7b. External corner straight.



DKT1.1. D 9. Vertical joint.



DKT1.1. D 10. Vertical expansion joint.



DKT1.2. D 8. Internal Corner.

- | | |
|-----------------------------------|-------------------------------|
| 1. SUPPORTING WALL. | 16. MIDDLE EDGE PROFILE/CLIP. |
| 2. BRACKET ANCHOR. | 17. BOTTOM/TOP VISIBLE CLAMP. |
| 3. INSULATION. | 18. MIDDLE VISIBLE CLAMP. |
| 4. INSULATOR PAD. | 19. INTERIOR BACK CLAMP |
| 5. FIXED BRACKET. | 20. EXTERIOR BACK PROFILE |
| 6. ADJUSTABLE BRACKET. | 21. CHEMICAL ANCHOR SYSTEM |
| 7. L PROFILE. | 22. SECURITY FIXING |
| 8. T PROFILE. | 23. VENTILATION PROFILE |
| 9. SD SCREW. | 24. LINTEL |
| 10. RIVET. | 25. JAMB |
| 11. UNDERCUT ANCHOR. | 26. WINDOW SILL |
| 12. HORIZONTAL RAIL. | 27. TOP HAT |
| 13. C HANGER. | 28. CORNER PROFILE |
| 14. C HANGER ADJUSTABLE. | 29. BONDING ADHESIVE |
| 15. BOTTOM/TOP EDGE PROFILE/CLIP. | 30. DEKTON |

These technical details has been developed by Cosentino as a suggestion to solve different points in a general way. They need to be adapted and coordinate with support in each project by a competent technician. If you need support to adapt them to a project do not hesitate to contact Cosentino.



COSENTINO GROUP / Ctra. A334 Baza-Huércal Overa, km 59 / 04850 Cantoria (Almería) / España (Spain) www.cosentino.com

DESCRIPTION:

CONSTRUCTION DETAILS DEKTON KEIL UNDERCUR ANCHOR. HORIZONTAL SECTIONS. INTERNAL & EXTERNAL CORNERS AND VERTICAL JOINTS

SYSTEM:

DKT1.1.

SCALE:

1/10

DATE:

v0. 09/20