



STEINMANN GROUP *presents*

LITHODECOR FASSADEN GMBH



STEINMANN GROUP takes over the BRAND "LITHODECOR" from DAW SE.

- Lithodecor Fassaden GmbH - within the STEINMANN GROUP - has a qualified and experienced team of employees.
 - Under a new banner and fresh wind, our focus remains on the **supply business**.
- We offer you new and comprehensive competences for the construction of ventilated facades - in glass, ceramics and natural stone...



About us

Large & Light in design?
in ceramic, glass or stone?
Can only be from "LITHO"!

Advantages



LITHODECOR FASSADEN GMBH

Quality means that the customer and not the material comes back!

- Our structures are lean, so decisions can be made quickly.
- **WE** have competences that make it possible to turn diverse design ideas into reality - where other systems reach their limits.
- Our supply factory has the best requirements and standards to handle your order professionally.

You have the ideas - we make it happen!

System: Litho-Stone

Even large panels with an area of up to 7.7 m² can be hooked into the aluminium substructure without any visible fixing elements.

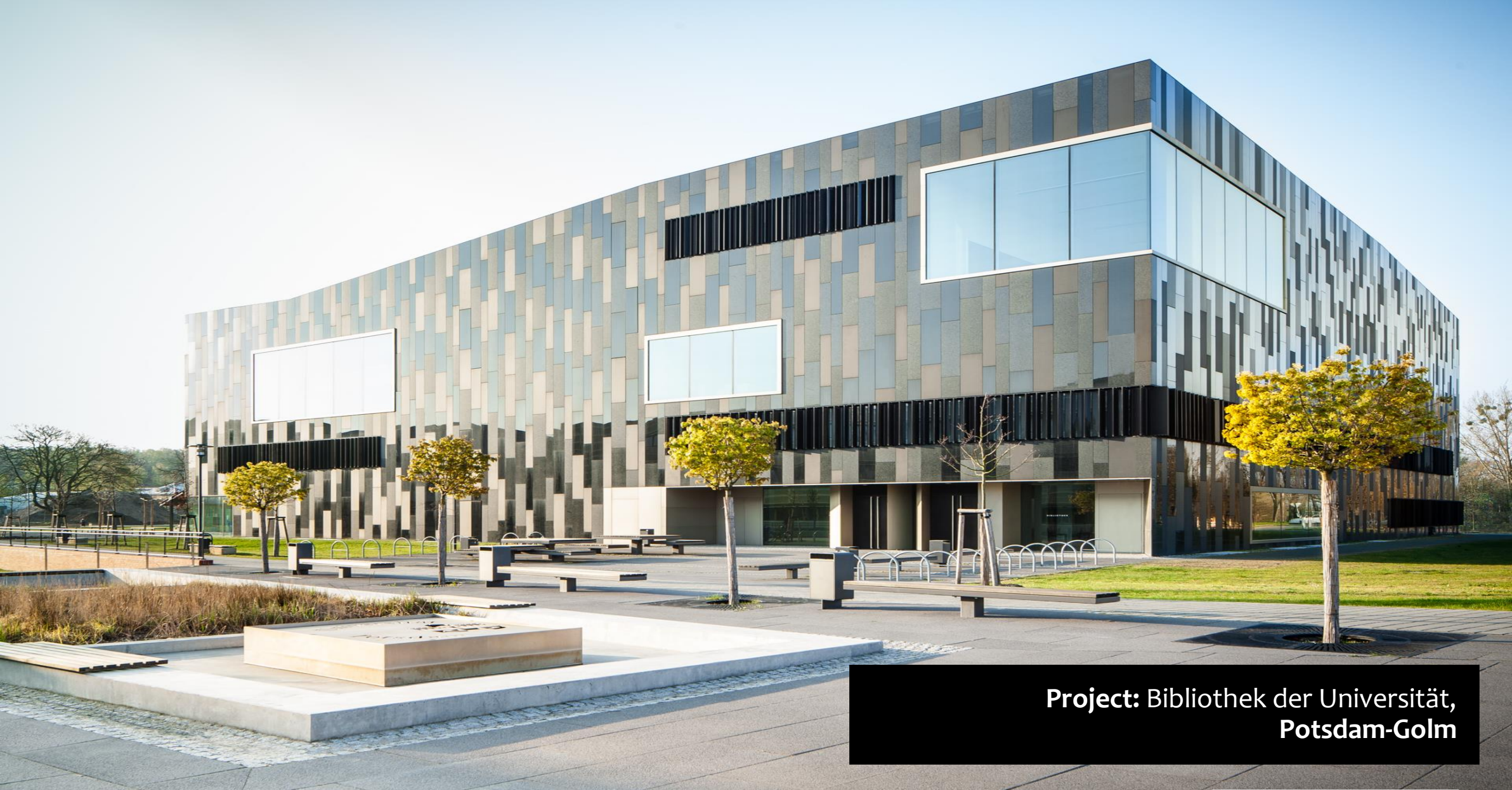


**Project: Büro & Verwaltungsgebäude Bestseller
Aarhus - Dänemark**



**Project: ATHLETES VILLAGE - FESTUCA HOUSE
London - England**

Litho-Stone – 630 m²



**Project: Bibliothek der Universität,
Potsdam-Golm**

Litho-Stone – 1.600 m²

 **sevens+maltry**

 **LITHO
DECOR**



**Project: Deutsche Rentenversicherung
Laatzen - Deutschland**

Litho-Stone – 6.000 m²





**Project: Wellington Place
Leeds - England**

Litho Stone – 10.500 m²



System: Litho-Glass

The panels of toughened safety glass are available in numerous attractive colours and can even carry customised digital printing.





**Project: Enderby Wharf
London - England**

Litho-Glass - 5.400 m²



**Project: Münchner Rückversicherung
München - Deutschland**

Litho-Glass - 2.550 m²





**Project: Zentrale FC Bayern München
München - Deutschland**

Litho-Glass - 200 m²



**Project: Klinik / Gesundheitszentrum
Walstede - Deutschland**



**Project: Leibniz-Universität
Hannover - Deutschland**

Litho-Glass– 1.200 m²

System: Litho-Ceramics

Litho-Ceramics offers a wide range of design and finish options for high-quality ceramic facades.





**Project: Flare of Frankfurt
Frankfurt - Deutschland**

Litho-Ceramics – 5.500 m²





Facts:



LITHODECOR FASSADEN GMBH

Light - Lighter – Lithodecor

- **low weight** per unit area of all systems.
- **Easy combinations** with other facade systems.
- **Highest resistance** to mechanical action.
- **weather-independent** and **quick assembly**.
- **Large formats and shapes** where other systems reach their limits.

ONLY BY LITHODECOR!

You already have ideas and images in your head? [Let's talk about it!](#)



STEINMANN GROUP

Dept.: Lithodecor Fassaden GmbH

Lithodecor Fassaden GmbH

+49 3765 3804510

info@lithodecor.de

www.lithodecor.de



Naturstein Steinmann GmbH



www.naturstein-steinmann.de

Lithodecor Fassaden GmbH



www.lithodecor.de

COOLSTONES by Steinmann UG



www.coolstones.de

STEINMANN GROUP

getting together is a start
sticking together is progress
working together is a success.

Henry Ford

