

B

Inspired by Colour – STENI*



*

B

Housing



B

CO₂ emissions: 14 Kg/m² Steni Nature 17 Kg/m² Steni Colour

Source: Official EPD analyzes

[Wait for stories of reusable panels!!]

B

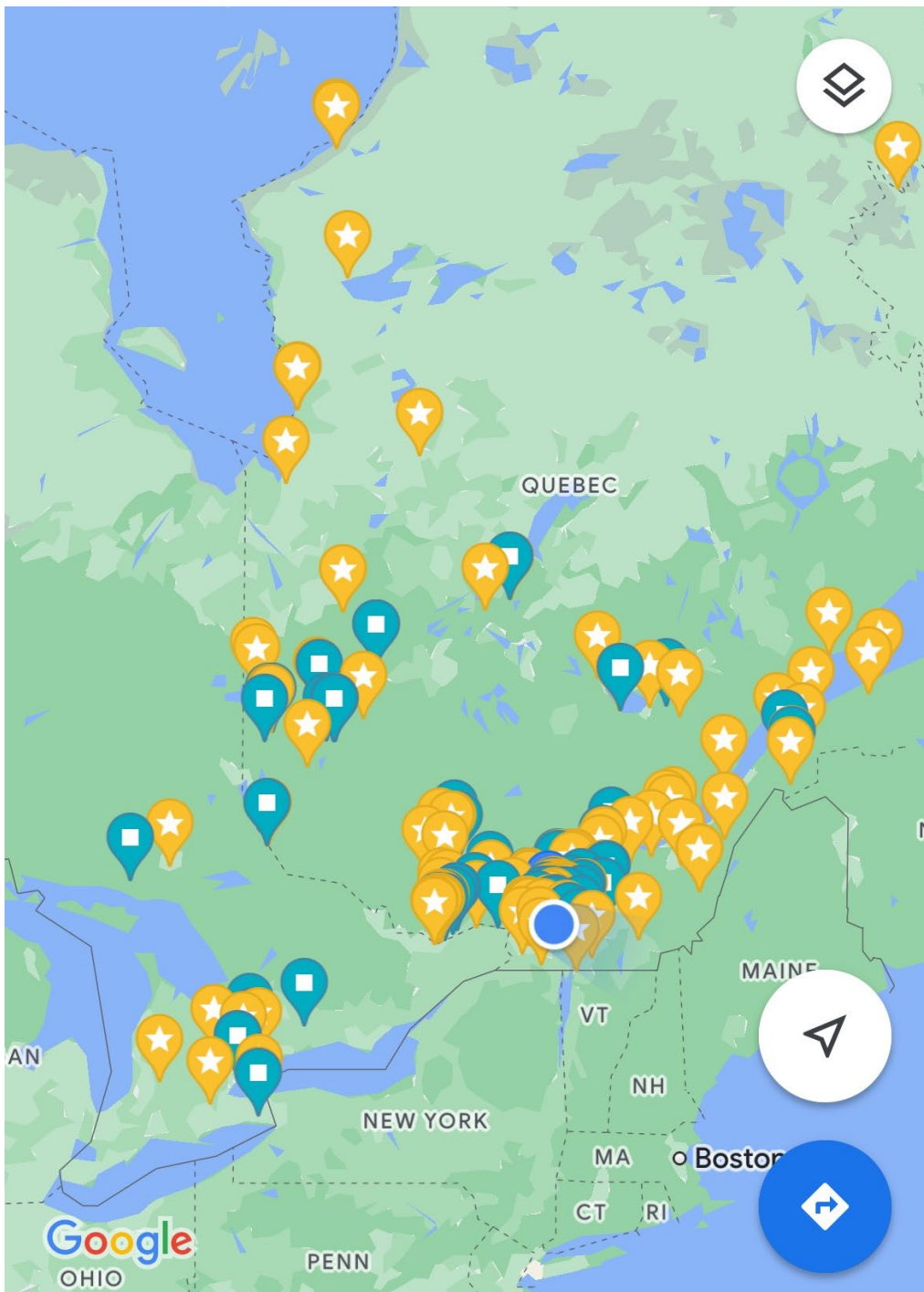


60 Year Warranty

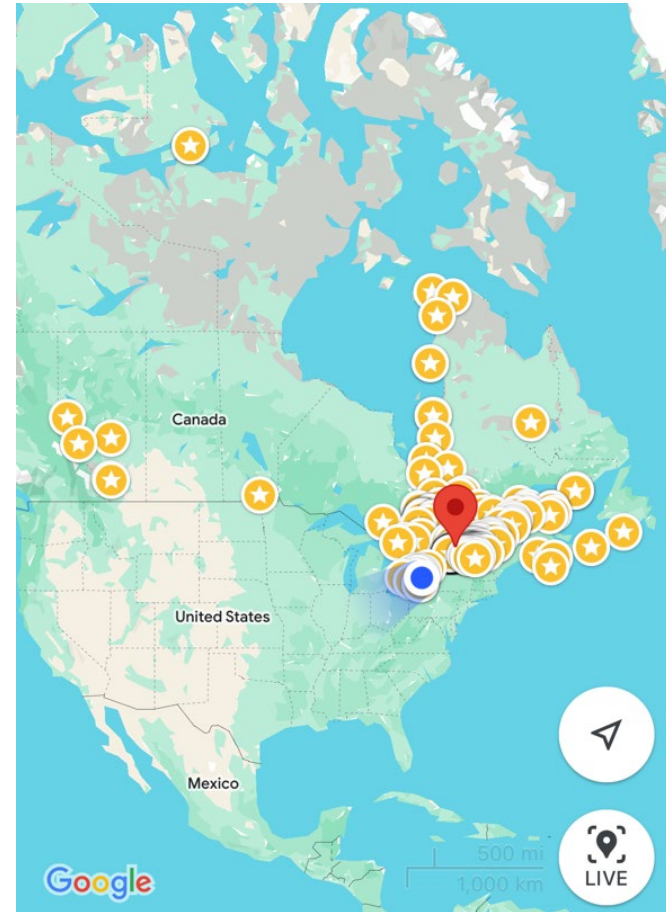
Buildings in Canada that
old, no claims.

Prime Minister 60 Years Ago

B

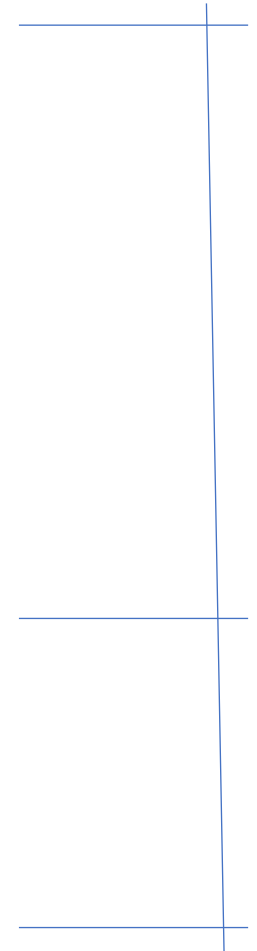
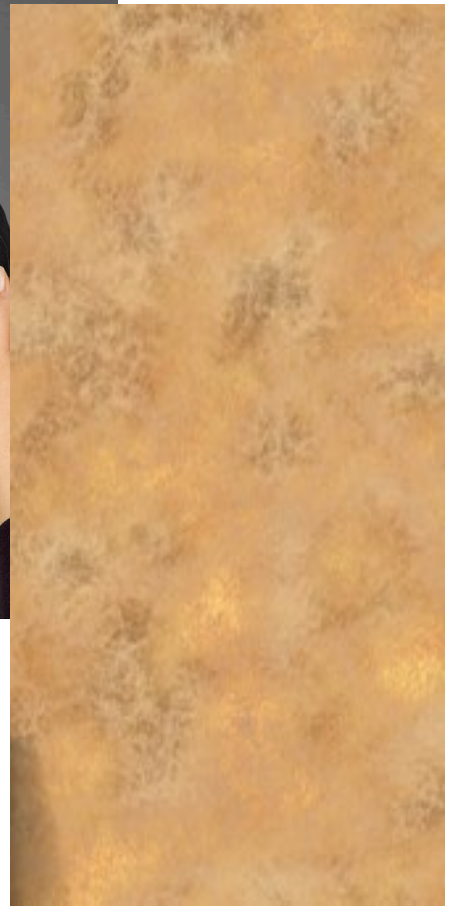


In Canada since 1965





B



Max 11 1/2'

Min 33 1/2"

48"

Cut to length



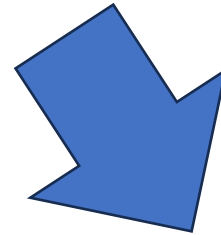
Inventory in Montreal!





High Performance Facades Should Not Be Left to Chance

Get expert advice on the best building envelopes and high performance façades to fit
s unique needs.



Colour



 **CERACLAD**
Rain Screen Exterior Siding System


STENI®


 **Argeton**



FSi
FACADE SYSTEMS INC.



FSI
FACADE SYSTEMS INC.



STENI®



B









*Looks like tile, eh.
This is not a mortar joint!*



- Colour, not just for colour's sake
- Meet budgets
- Almost zero maintenance [easy to clean graffiti]
- Retrofit solutions



- Constructability
- Operating performance





Confidence



55
Years in Production

4
Offices in 4 countries +
local distribuion partners



HQ
Steinsholt, Larvik

115
Employees



40%
Female
employees



10 000
M2 Factory site



14 kg
Low CO₂
emission




220
Tonnes recycled
production waste p.a

+50 000 000 m²
Of delivered facade panels



3 500
Active
customers



60yrs
Warranty



40
Countries deliveries

5 000
Surface alternatives



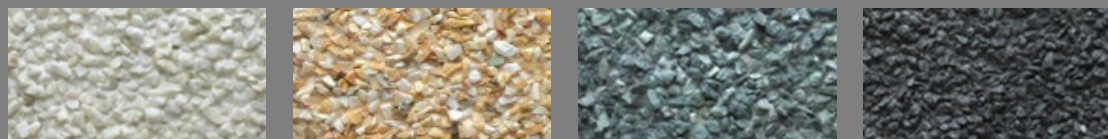
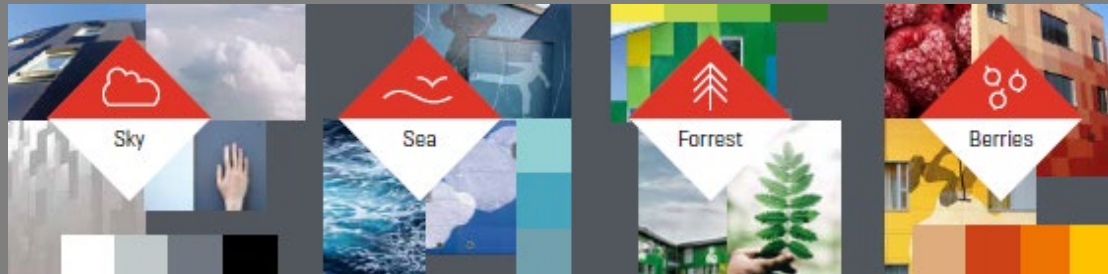
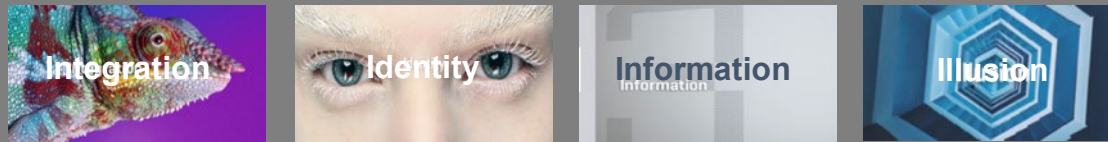
1,000, 000
M² production capacity



€30 million
turnover

0
Maintainance need

Design Freedom in finish, texture and colour



Steni Vision Custom – allows for individuality and expression in design

Steni Vision Standard – takes standard patterns and designs

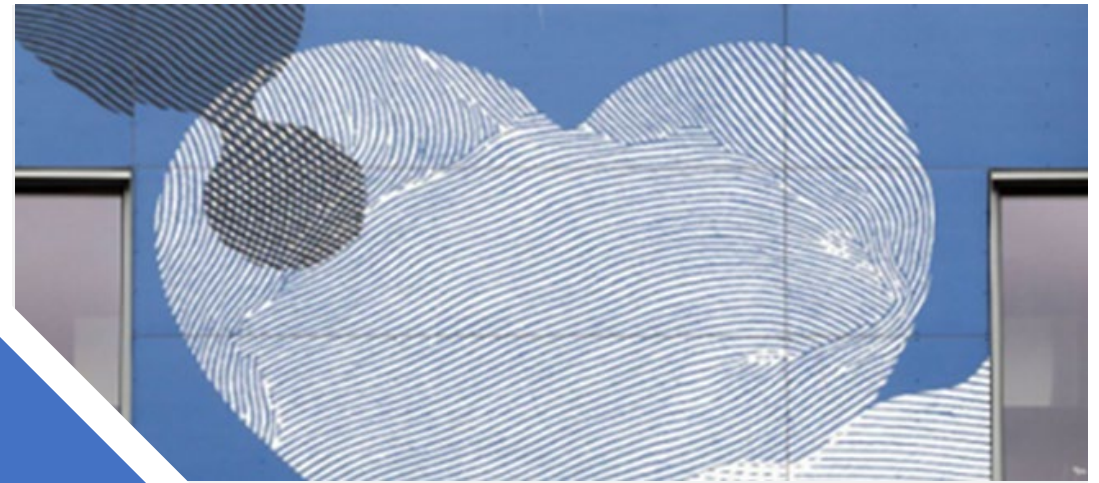
Steni Colour – offers a wide range of colour options and gloss finishes

Steni Nature – Natural stone in four grades, various textures + recycled glass surfaces



Steni Vision

Freedom and expression – Standard designs and custom options to allow freedom of expression



B



GRUNNSTEIN 12 APRIL 1991
نیک بنیاد جمعیت الوداع
۲۴ رمضان المبارک ۱۴۱۲ ہجری

WORLD ISLAMIC MISSION
ÅKEBERGVEIEN 28B
0650 OSLO

B



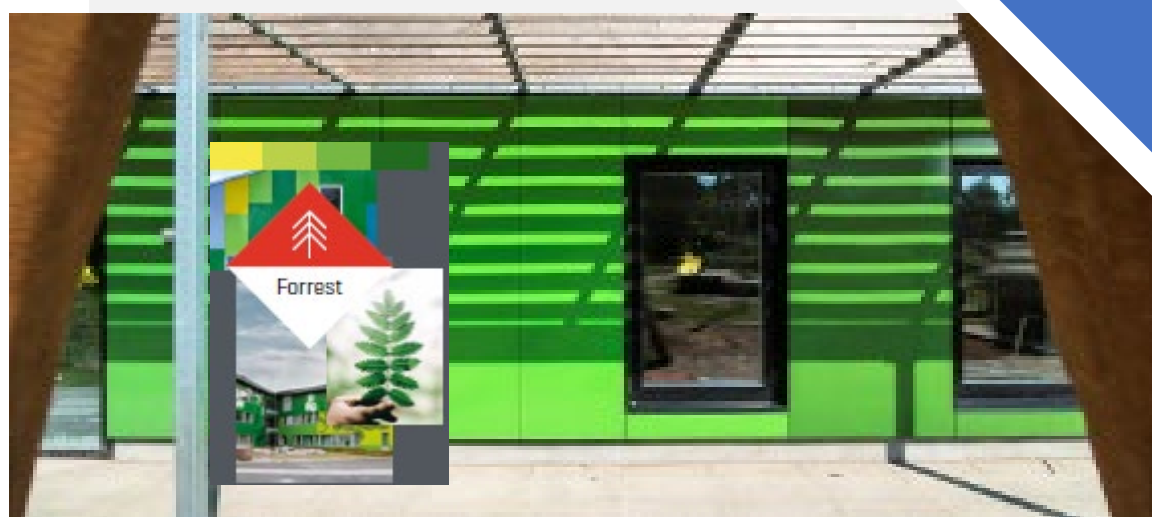
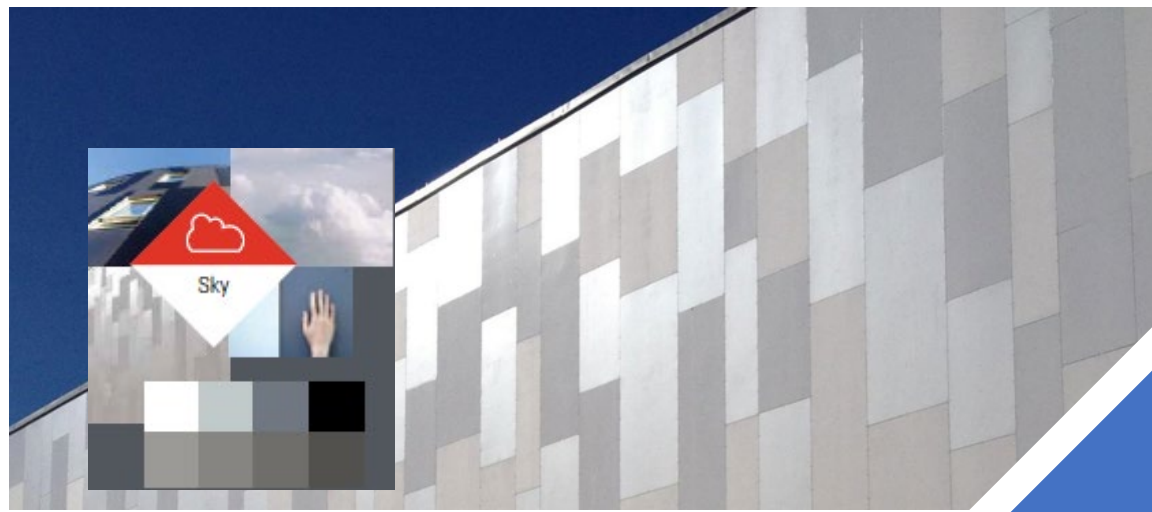
 newton® Flight Academy

 newton® Flight Academy



B Strong Colours

Four main colour groups with 60 standard colour options and three gloss finishes



B

Design Freedom - One colour and three gloss choices



B Corners and details

Budget Panel price +
\$30/ linear ft one corner
Two corners [column
covers] \$35/ linear ft





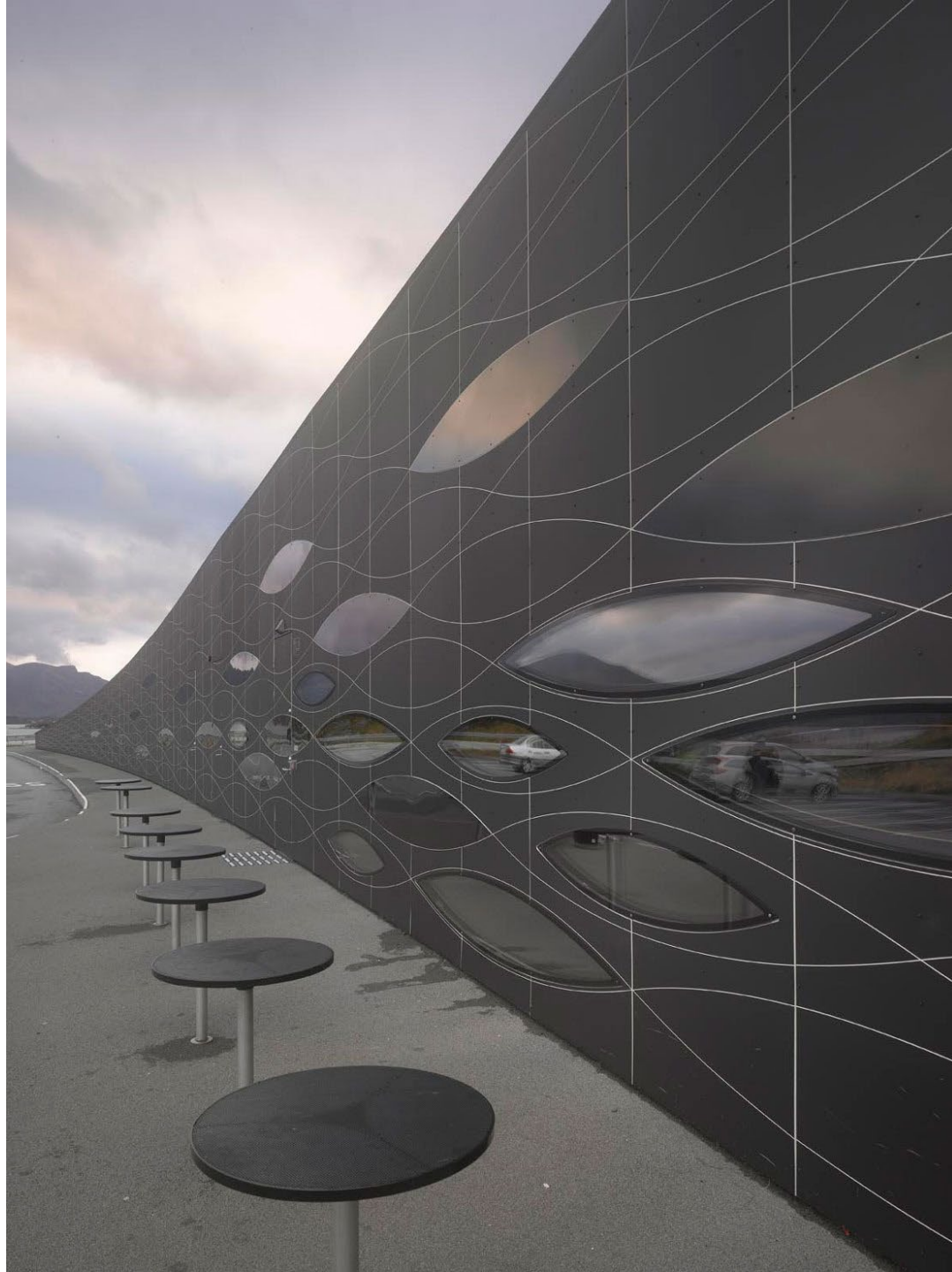
J Natural Stone Finishes

Four main colour options - with four standard material grades



Steni Nature – Stone & Glass







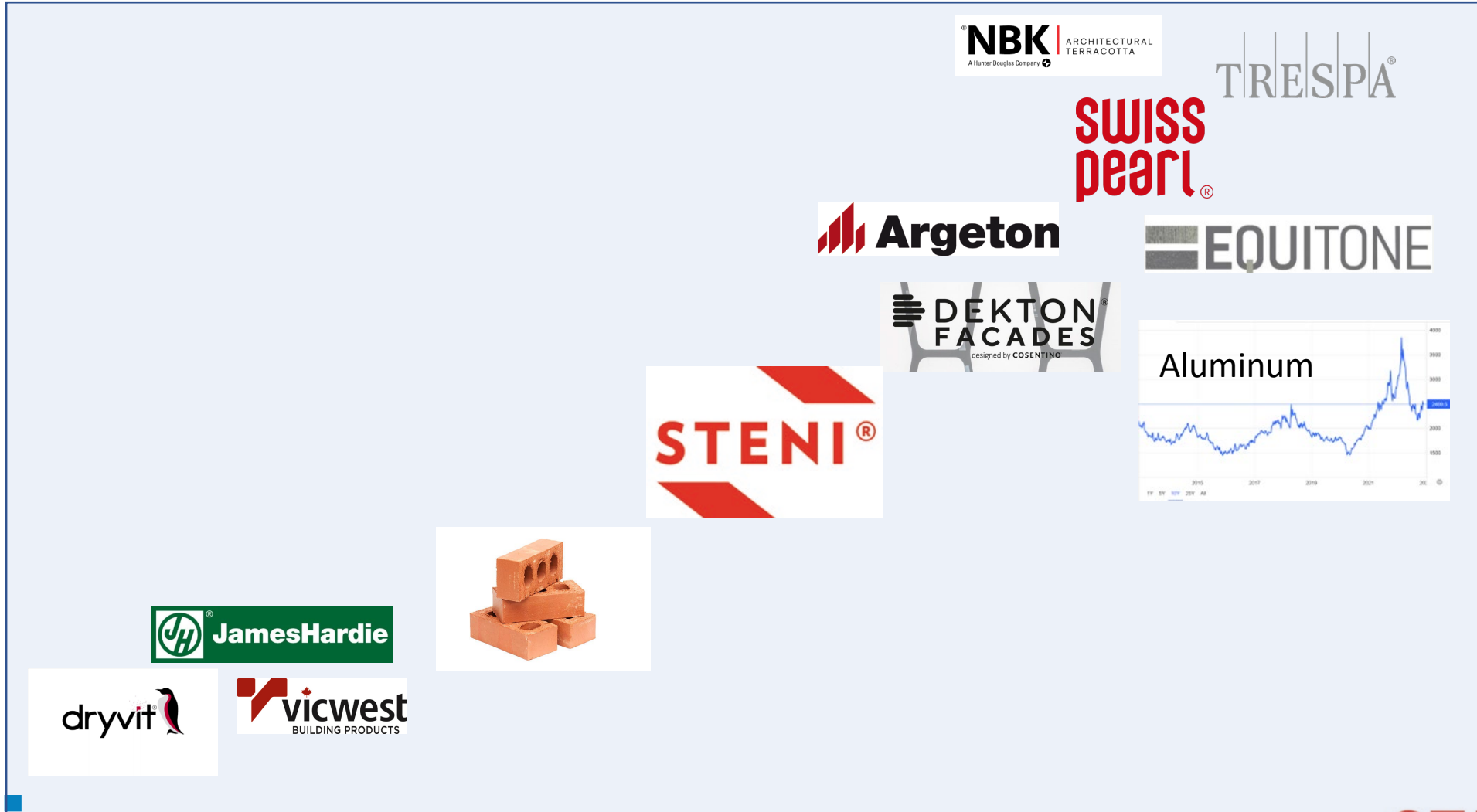
Budget Prices

Nature	Colour	Vision	Terra*
\$11	\$14	\$18	\$9

- Optimize widths helps.
- **Length flexibility to enhance utilization.**
- Simple cutting, drilling, attachment to site conditions.
- Suits high performance and simple subsystem.
- Excellent for recladding.
- Nature at grade, colour above common from schools.

J

Cost



STENI NATURE
- Rough, natural
stone surface





J



Steni Colour as art, Scott Thoe, CNC-cut





Most Sustainable Building Is The One We Use

Really. Now that is sustainability

Built 1975 w/ Steni Panels

Panels Removed, insulated and re clad w/ same Steni Panels 2016

Propriétaire

Office municipal d'habitation de Gatineau

Architectes

Tolchinski & Goodz

Adresse

26, rue Claire (J8T 5V7)
Gatineau

Année de construction: 1975

Structure: Béton

Catégorie: Personnes âgées

Nombre d'étages: 9

Nombre de logements: 80

Typologie: 72x1cc
8x2cc

Salle communautaire: Oui

Ascenseurs: Oui



J

Retrofit 2016 Removing and Re installing Original Panels



STENI®



J

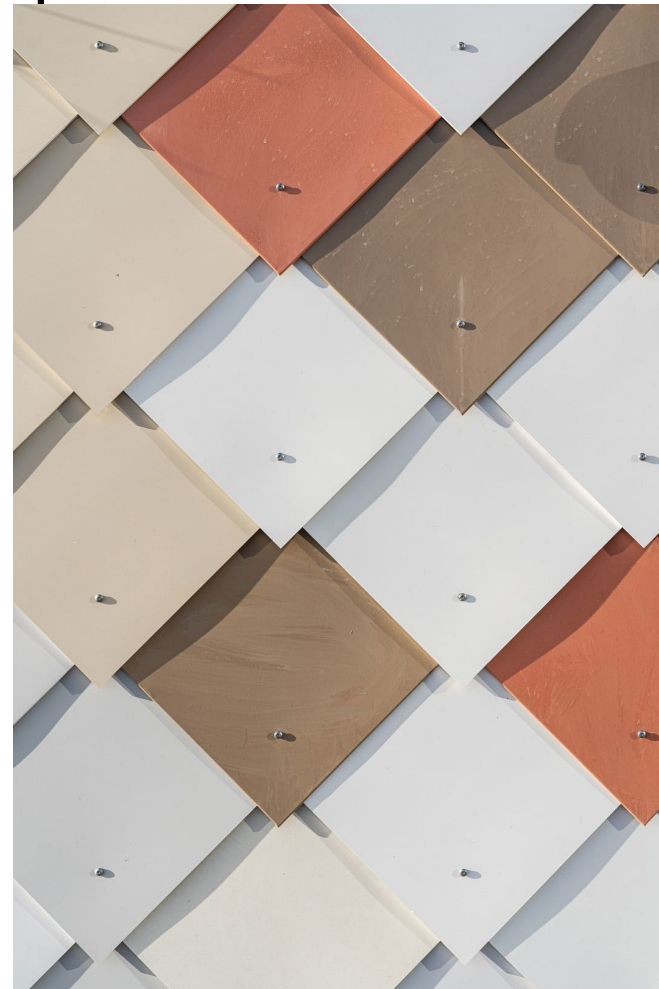


J





35 year old
recycled Steni
panels





B

TUOMARILAN KINDERGARDEN – FINLAND

Architect: Claudia Auer & Niclas Sandås



PRINSES BEATRIXSCHOOLO





B



B Panels can be bent at a 3,5 metre radius







J

49



After Father Bressani
Pretium Engineering



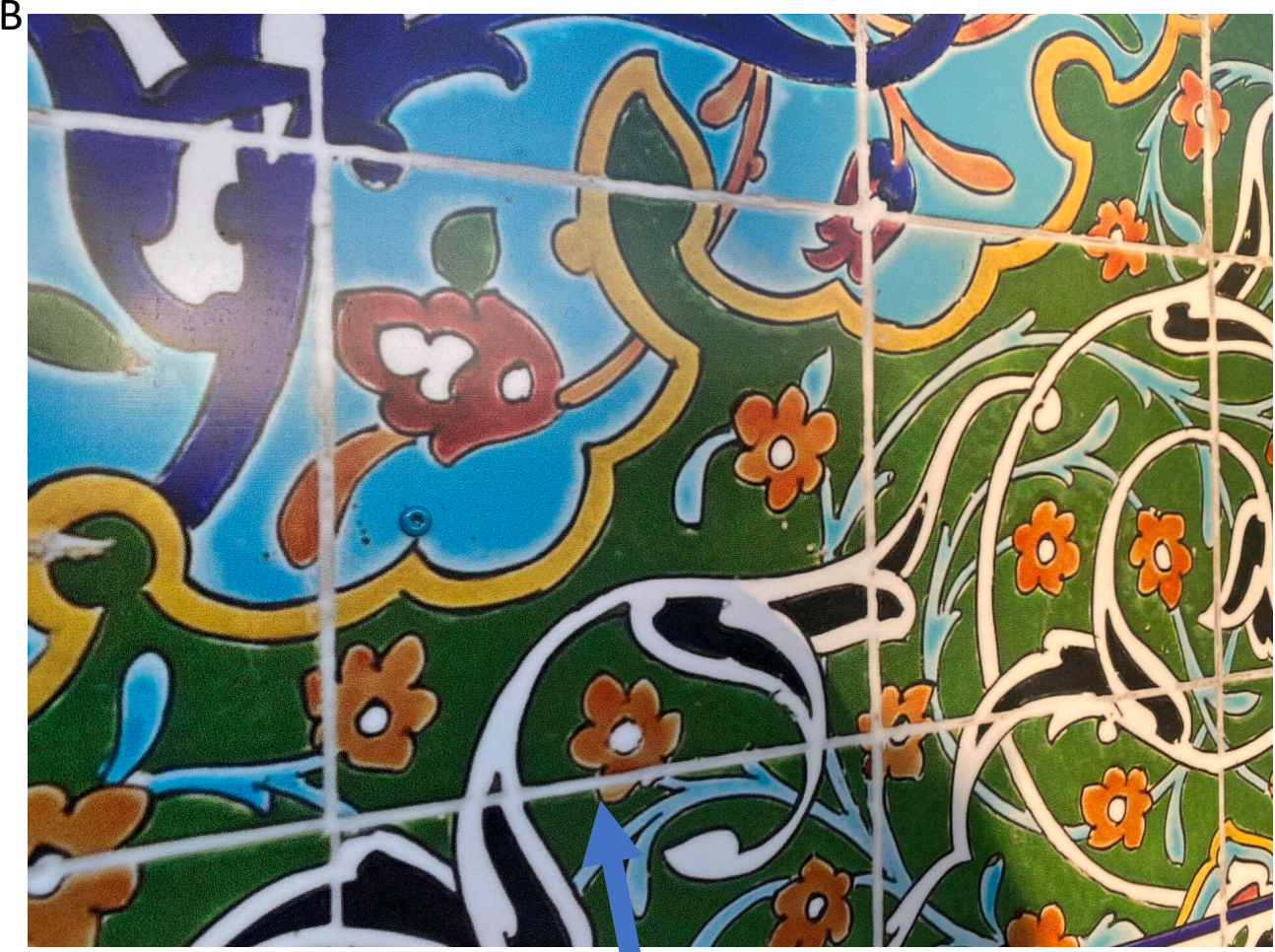
After Father Bressani Pretium Engineering



J

After Father Bressani Pretium Engineering





*Looks like tile, eh.
This is not a mortar joint!*



- Colour, not just for colour's sake
- Meet budgets
- Almost zero maintenance [easy to clean graffiti]
- Retrofit solutions



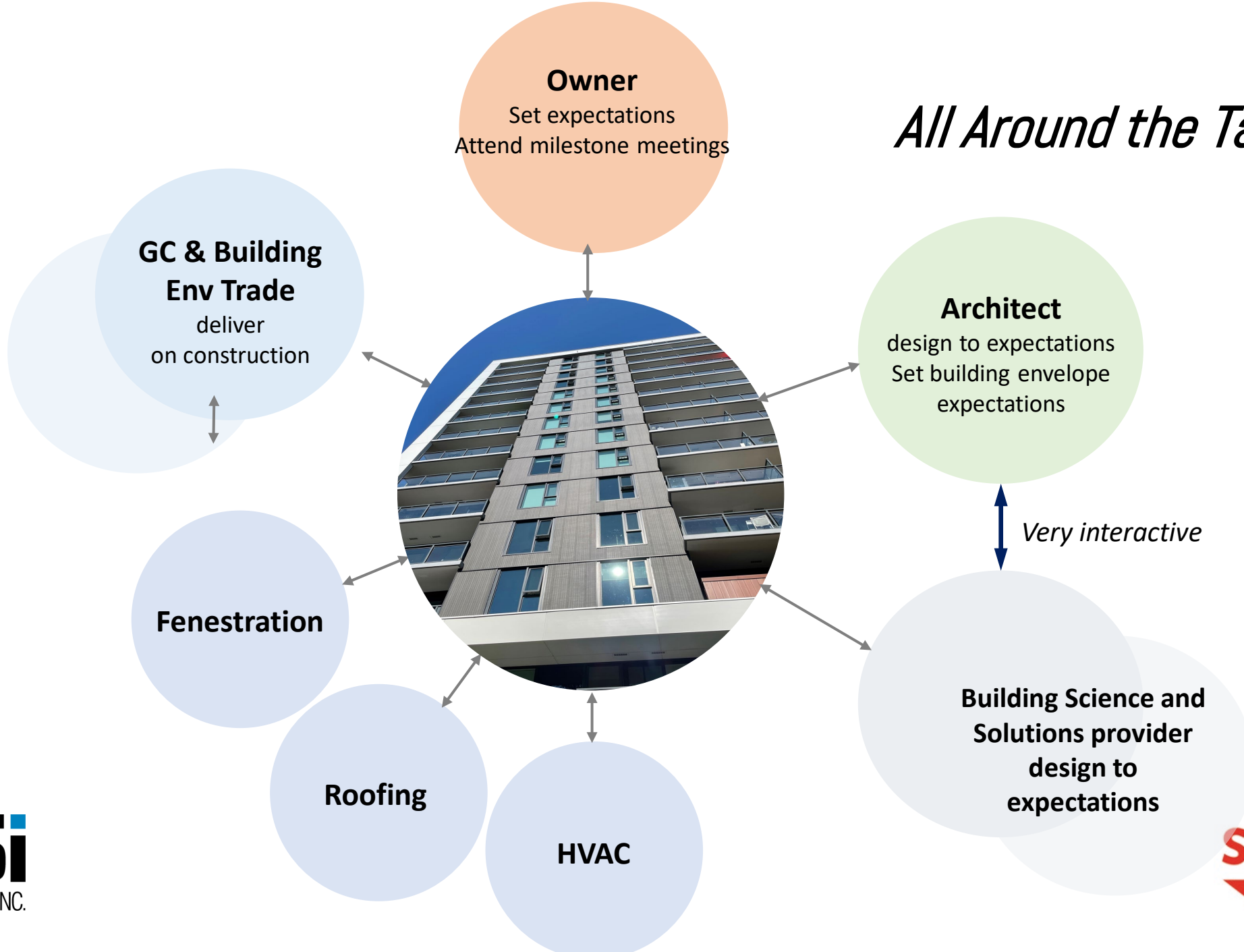
- Constructability
- Operating performance







All Around the Table!

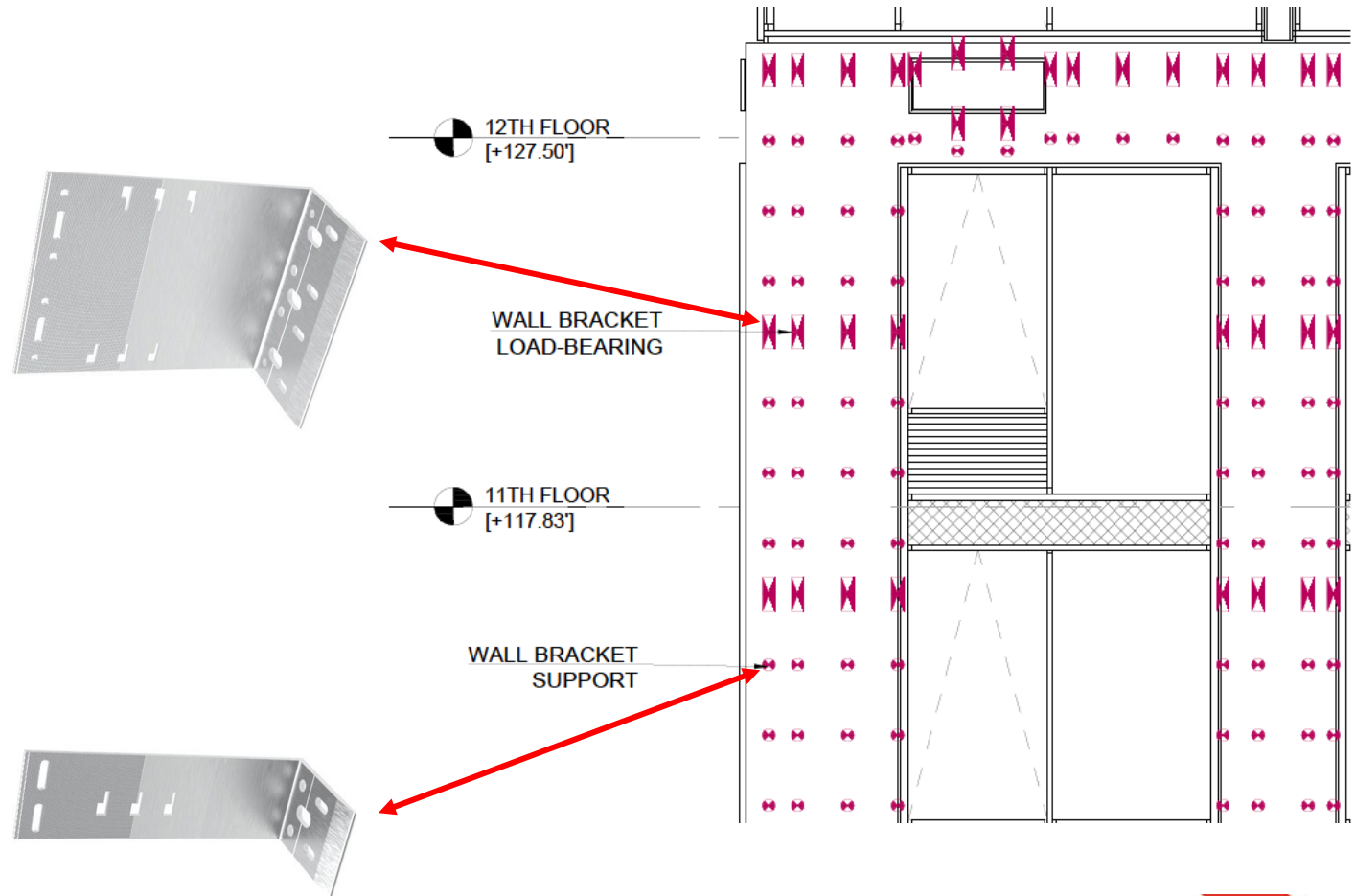
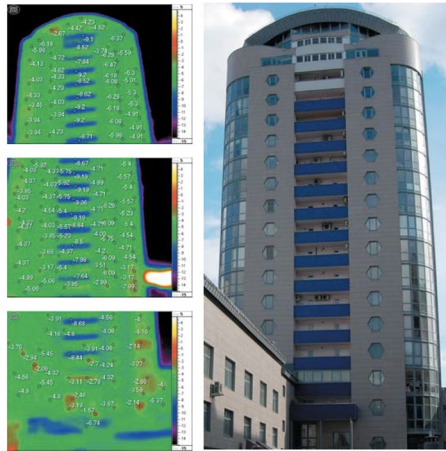


Structural and Thermal Engineering Together

A façade is modelled for structural requirements and thereby thermal results.

Initial **budgeting** and value engineering opportunities identified.

Problems revealed early.



Location of wall brackets; based on structural analysis

Look for System Choices – Demand Better



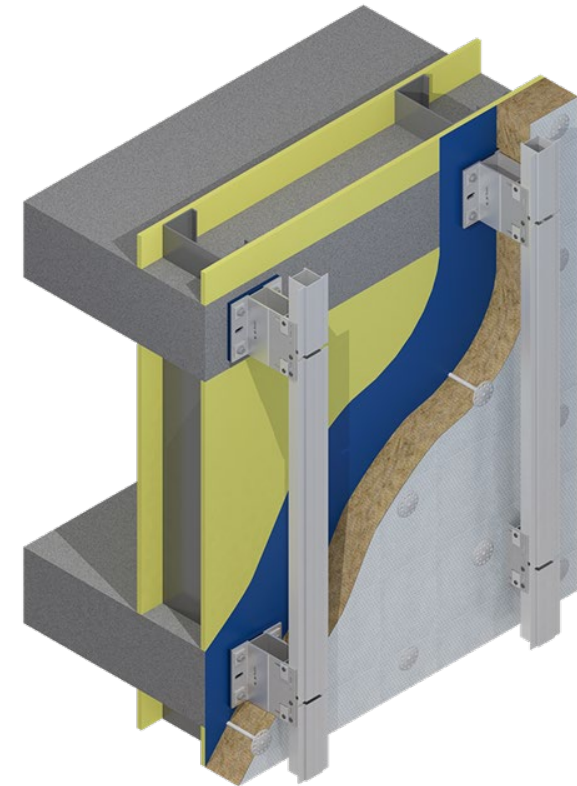
Simple



High Performance



Innovative (slab-to-slab)



*And Everything Between

Build = Design Starts at Beginning



**Best accomplishments are at the beginning;
Greatest Failures Avoided are too.**

- Design review.
- Cladding layout review.
- Initial system recommendation.
- Initial **structural engineering** and resulting **thermal performance**.
- Comprehensive **value engineering**.
- **Cladding fabrication** recommendations.
- **Document creation; details, specifications.**
- **Budgeting.**



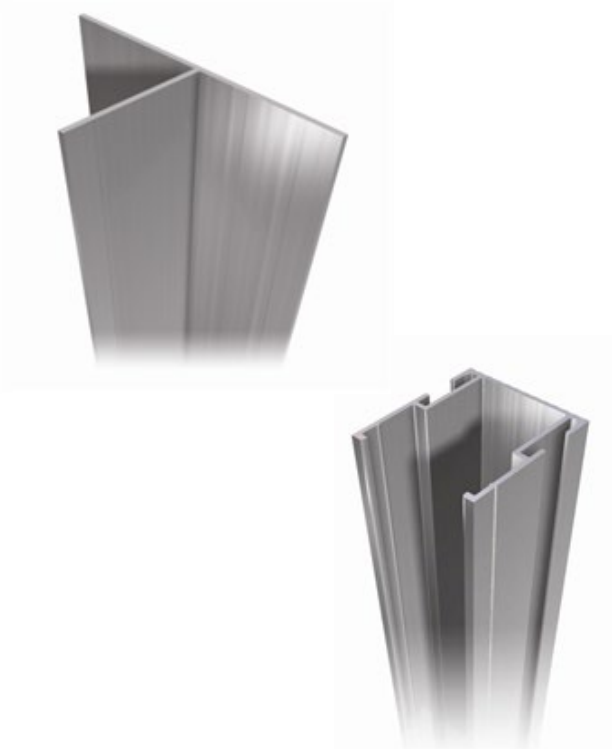
You Should Ask for This.

Bespoke Systems “Building Blocks”

#1 Wall Brackets



#2 Profiles



#3 Cladding Attachments



Note: Often different systems are used on the same building, depending on cladding and loads

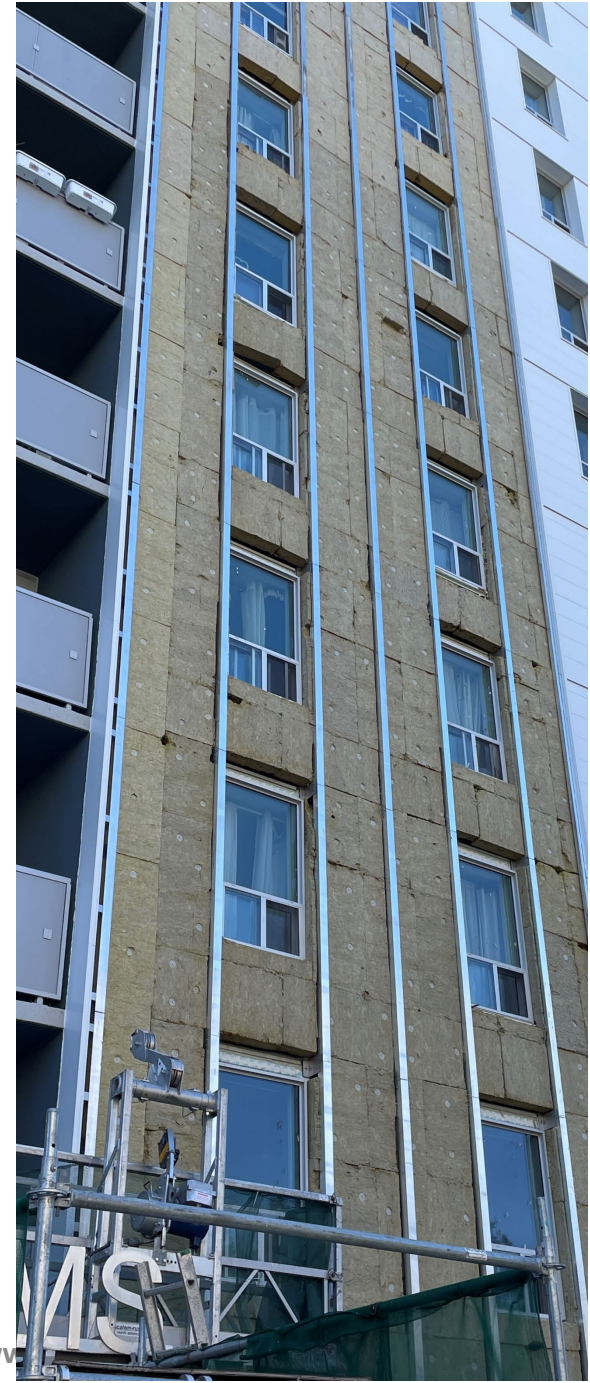


cool, temperate climate



**CERTIFIED
COMPONENT**

Passive House Institute



2 Brahms, North York
Construction Trinity Group

www



*Looks like tile, eh.
This is not a mortar joint!*



- Colour, not just for colour's sake
 - Meet budgets
 - Almost zero maintenance [easy to clean graffiti]
 - Retrofit solutions
- 
- Constructability
 - Operating performance





Riobel

820

Commercial













This blew my mind. Let's explore the use of cast Glass Fibre Reinforced Concrete [GFRC]



This blew my mind. Cast GFRC offers affordable, extremely creative, constructable choices for remarkable facades.

Get this. It is in our back yard. This project is at [Yonge and Eglerslie](#)

Mahmoud owns [Petra Design](#), with more than 30+ years in the GFRC business. This is a very well known technology in Europe and the Middle East. We are scaling it here.

This webinar will cover
What is GFRC, How is it used, and Case studies
Explain form construction, pour, QC, release and subsystem
Walk through cost drivers.
Q&A

[Mahmoud Alfayez](#) of [Petra Design](#) will join me

REGISTER HERE FOR JUNE 7, NOON - 1PM EDT

Are You Building High Performance Facades?



U-Kon High Performance Facades

Our popular series exploring:

- * Systems thinking
- * Design Precision and value engineering
- * Bespoke Systems
- * Innovation e.g. Passive House
- * Proper specification
- * Case Studies

Alex Mirilenko U-Kon Systems will be joining me

REGISTER HERE FOR JUNE 21, NOON - 1PM EDT



PREMIUM

Blair Davies, P.Eng.
An Expert and Agent for High Performance Facade Systems that are innovative, aesthetic, sustainable, constructible, affordable and proven.

Subscribe for High Performance Facades Knowledge

Sign up to receive few (we do not fill your inbox) technical, inspiring, informative messages

Email

SIGN UP

B

