

# Inspired – STENI\* Comprehensive Recladding Gatineau Affordable Housing



Gatineau Quebec



**Imagine:**

**1970's building**

**Panels removed; Insulated; Panels reinstalled.**

**Same Panels 40 Years Later.**

**Who Does that?**





# Really. Now that is sustainability

Built 1975 w/ Steni Panels

Panels Removed,  
insulated and reclad  
w/ **same** Steni Panels  
2016

**Propriétaire**

Office municipal d'habitation de Gatineau

**Architectes**

Tolchinski & Goodz

**Adresse**

26, rue Claire (J8T 5V7)  
Gatineau

**Année de construction:**

1975

**Structure:**

Béton

**Catégorie:**

Personnes âgées

**Nombre d'étages:**

9

**Nombre de logements:**

80

**Typologie:**

72x1cc  
8x2cc

**Salle communautaire:**

Oui

**Ascenseurs:**

Oui





J

**Retrofit 2016 Removing and  
Re installing Original Panels**









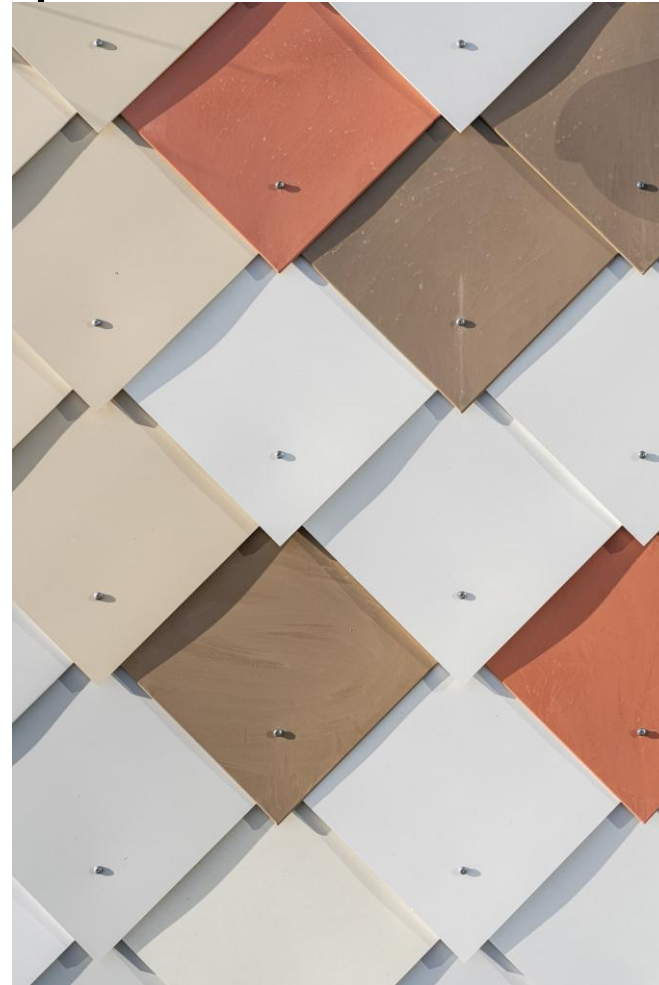
## *Recladding Does Not Stop There*

- Norwegian recycled panel example
- Father Bressani, North York
- Father McGivney, Markham
- Homeland P.S., Mississauga
- Sacred Heart CHS, Toronto
- And too many to list...





35 year old  
recycled Steni  
panels





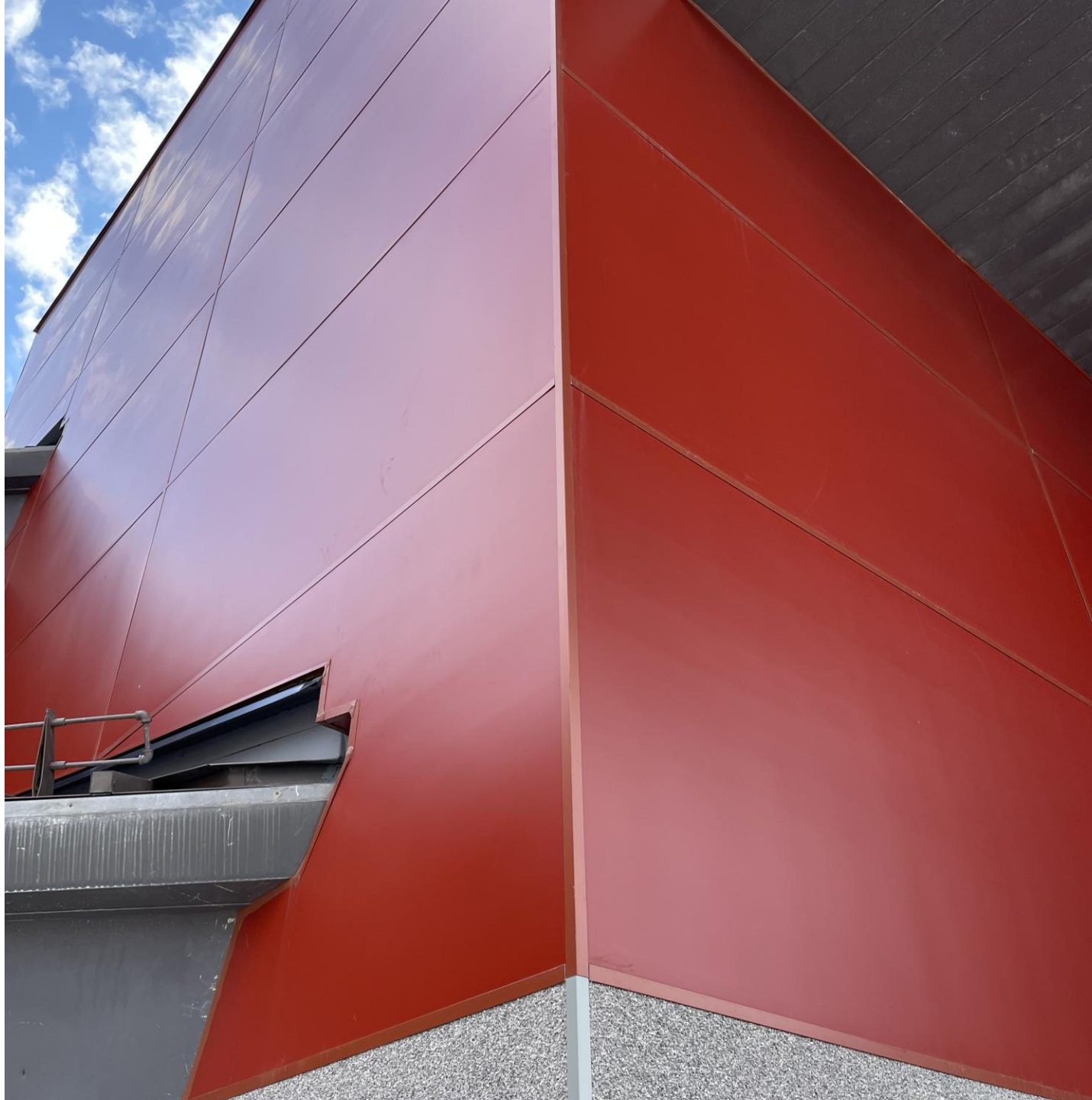








## After Father Bressani Pretium Engineering





J

## After Father Bressani Pretium Engineering





B Before  
Homeland P.S.  
Pretium Engineering





B

**After Homeland P.S.  
Pretium Engineering**





Before Sacred Heart CHS  
Pretium Engineering

14





After Sacred Heart CHS  
Pretium Engineering

15





J

After Sacred Heart CHS  
Pretium Engineering





J

Before Father Michael McGivney CA  
Pretium Engineering

FATHER  
MICHAEL MCGIVNEY  
CATHOLIC  
ACADEMY

MAIN ENTRANCE

FIRE ROUTE  
P  
VEHICLES MUST BE  
PULLED AWAY  
← TURNED RIGHT →







**New Carrefour High School,  
Architect TLA Architects**

2017

\$28 / sq ft including panels, girts,  
insulation, membranes and  
installation





**St Francis Assisi**  
**Poirier Fontaine Architectes**  
2016  
\$28 / sq ft recladding.





## Recladding

2014

\$40 / sq ft [small area]  
including panels, girts,  
insulation, membranes and  
installation on steel studs





**Ecole Marie-Clarac  
School Board**

2015

\$28 / sq ft recladding. Façade,  
soffits and returns.

**FSE**  
FACADE SYSTEMS



**ENI**®



B

**School Board Head Office**  
Late 1970's  
Look how clean original Nature  
is with little to no maintenance





B

24

