

B

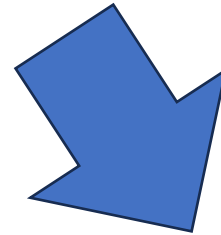
Inspired by Colour - Steni





High Performance Facades Should Not Be Left to Chance

Get expert advice on the best building envelopes and high performance façades to fit
s unique needs.



Colour





B



FSI
FACADE SYSTEMS INC.

STENI[®]







 **CERACLAD**
Rain Screen Exterior Siding System


STENI®


 **Argeton**



FSi
FACADE SYSTEMS INC.



*Looks like tile, eh.
This is not a mortar joint!*

- Colour, not just for colour's sake
- Meet budgets
- Almost zero maintenance [easy to clean graffiti]
- Retrofit solutions
- Constructability
- Embedded Carbon
- Operating performance



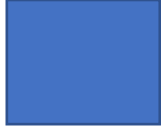
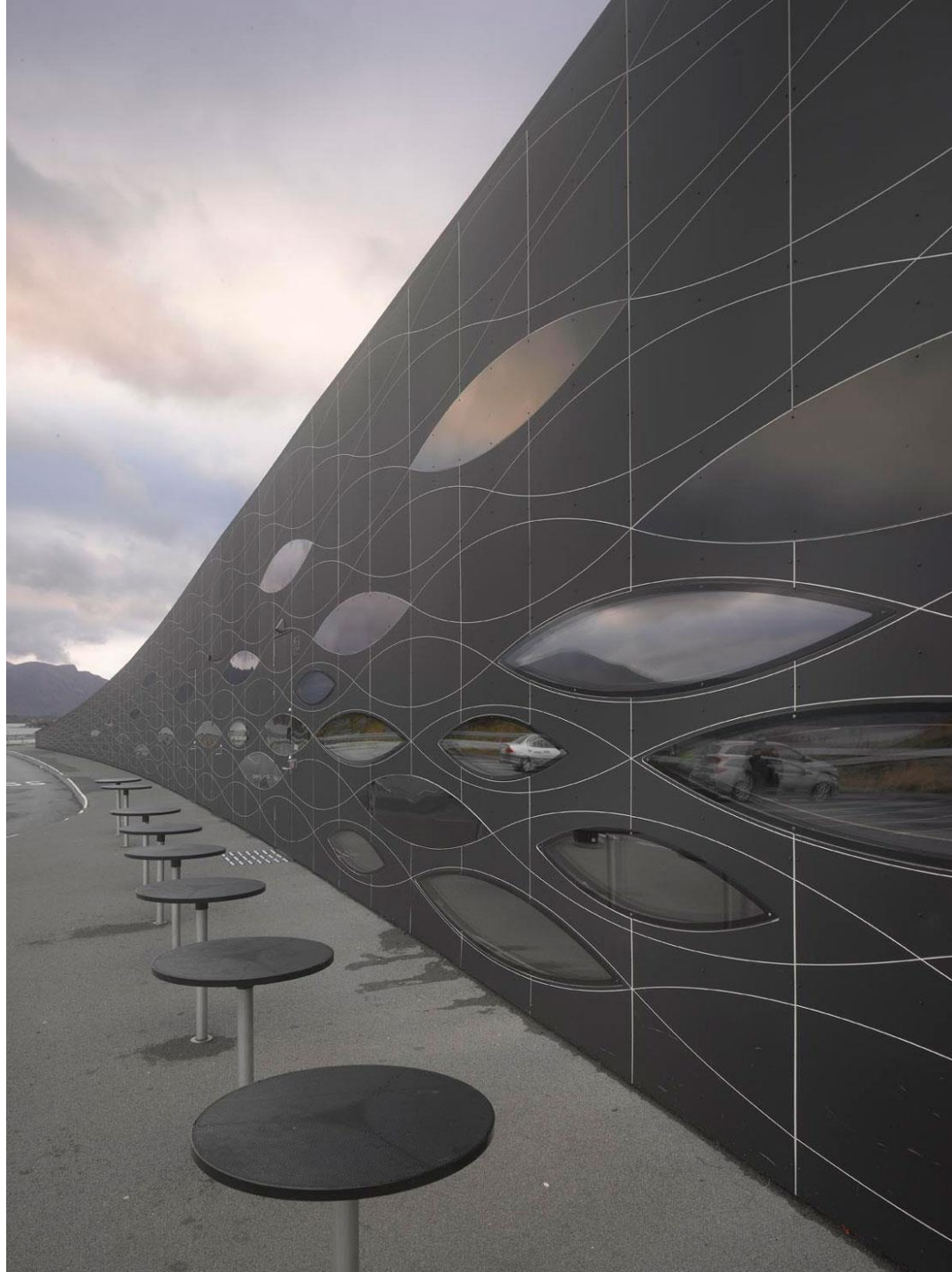
B



WORLD ISLAMIC MISSION
 دُنْيَا لِكُلِّ مَسْجِدٍ
 FIRST CENTRAL JAM-E-MOSQUE
 پہلی مرکزی جامع مسجد

GRUNNSTEIN 12 APRIL 1991
 مسجد جامعہ جماعتہ الوداع
 ۱۲ اپریل ۱۳۱۳ھ

WORLD ISLAMIC MISSION
 ÅKEBERGVEIEN 28B
 0650 OSLO



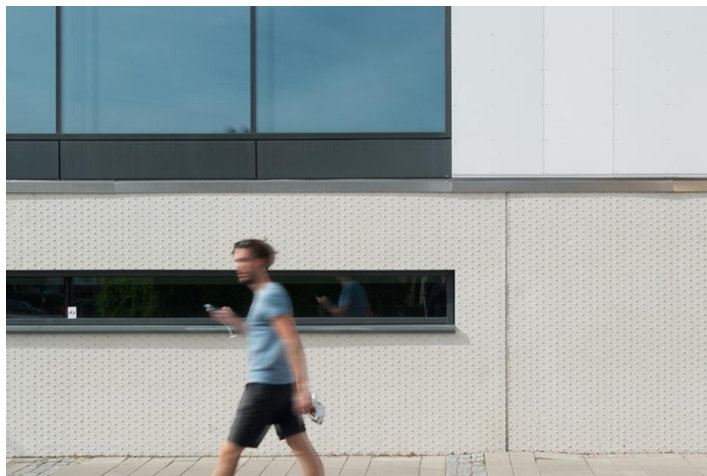
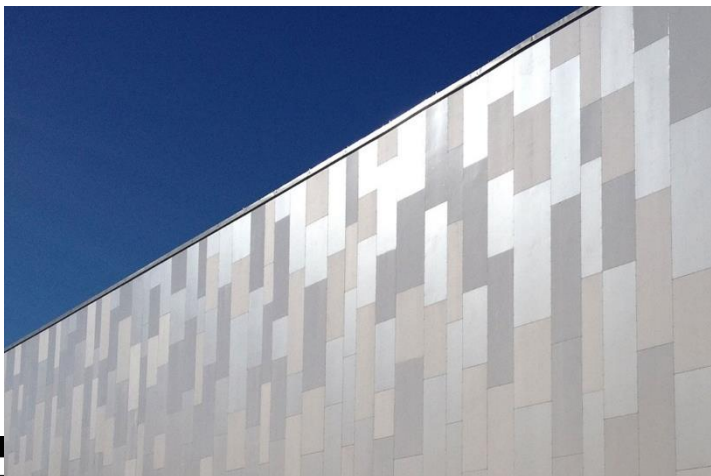
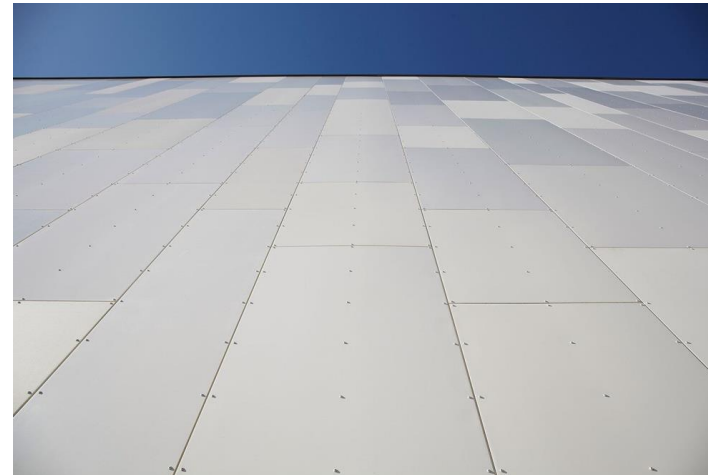


newton® Flight Academy

newton® Flight Academy

B

One colour and three gloss degrees – pre cut formats



B Gloss degrees

– matte, semi matte and high gloss



B



B

LIVSRUM – DENMARK

Effekt Arkitekter

Protego





STENI – in numbers



55
Years in Production

4
Offices in countries +
local distribuion partners




HQ
Steinsholt, Larvik

115
Employees



40%
Female
employees



10 000
M2 Factory site



14kg
Low CO₂
emission



220
Tonnes recycled
production waste p.a

+50 000 000 m²
Of delivered facade panels



1,000, 000
M² production capacity


FSI
FACADE SYSTEMS INC.



€30 million
turnover



3 500
Active
customers



60yrs
Warranty

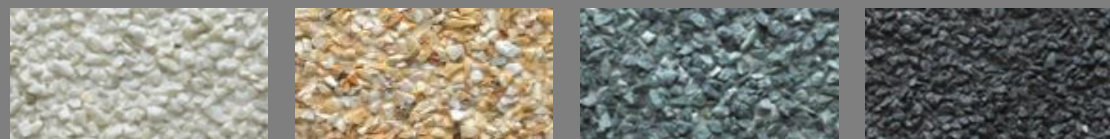
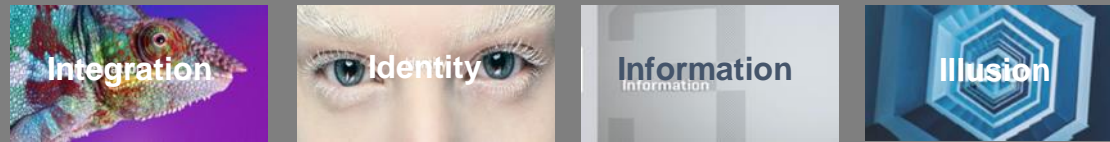


40
Countries deliveries

5 000
Surface alternatives

0
Maintainance need

Surfaces



Steni Vision Custom – allows for individuality and expression in design

Steni Vision Standard – takes standard patterns and designs

Steni Colour – offers a wide range of colour options and gloss finishes

Steni Nature – Natural stone in four grades, various textures + recycled glass surfaces

Now, let's back that up a bit





J

Real men don't use bandage's

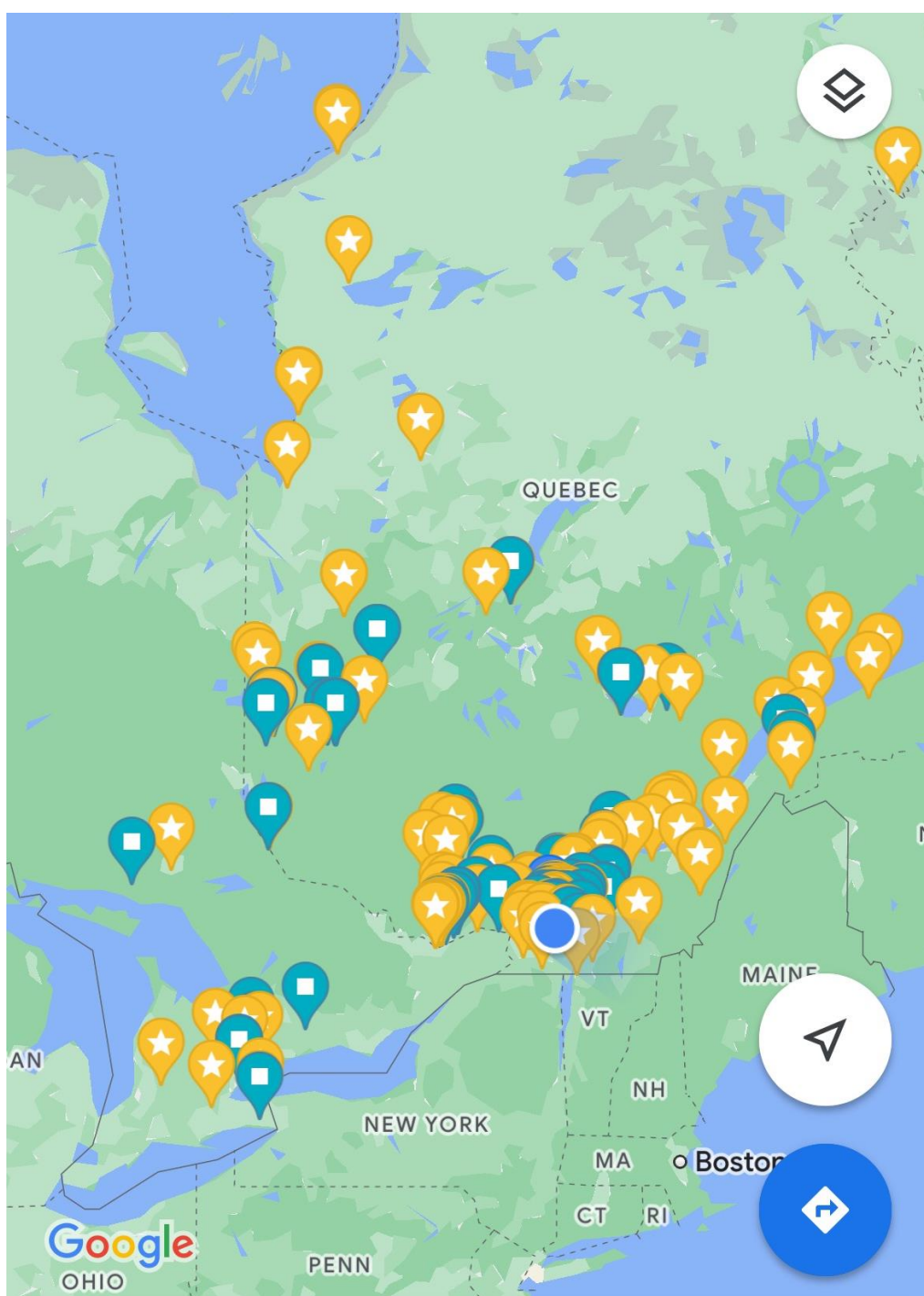
Nature [my best try™]



Budget Prices

Nature	Colour	Vision	Terra*
\$11	\$14	\$18	\$9

- Optimize widths helps.
- **Length flexibility to enhance utilization.**
- Simple cutting, drilling, attachment to site conditions.
- Suits high performance and simple subsystem.
- Excellent for recladding.
- Nature at grade, colour above common from schools.

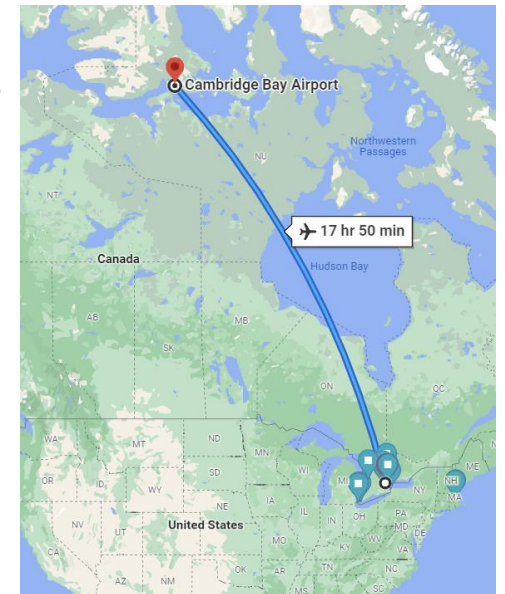


New Here...Not

Projects across Canada

You have been looking at Steni projects and probably did not know it. Hundreds and hundreds of projects in Ontario and Quebec, especially.

Far North projects as far as Cambridge Bay.





60 Year Warranty

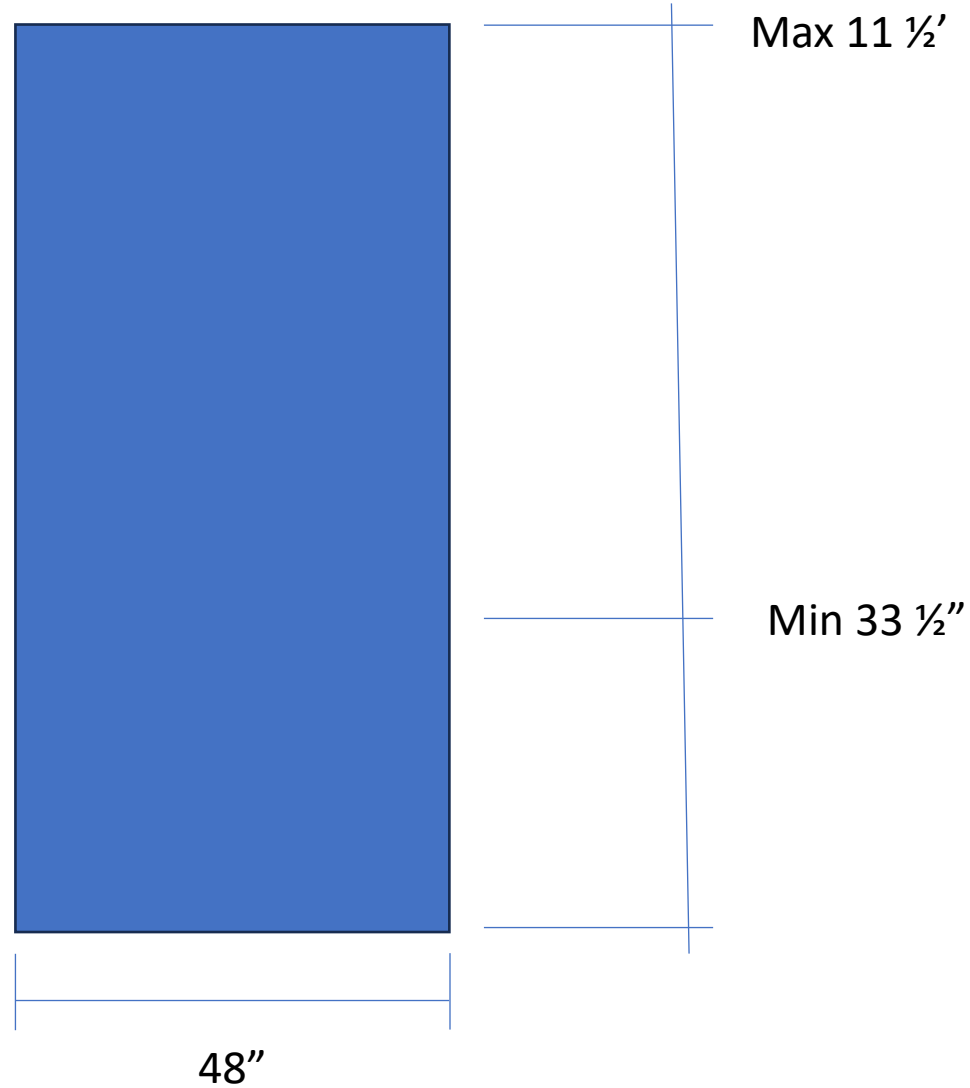
Buildings in Canada that old, no claims.





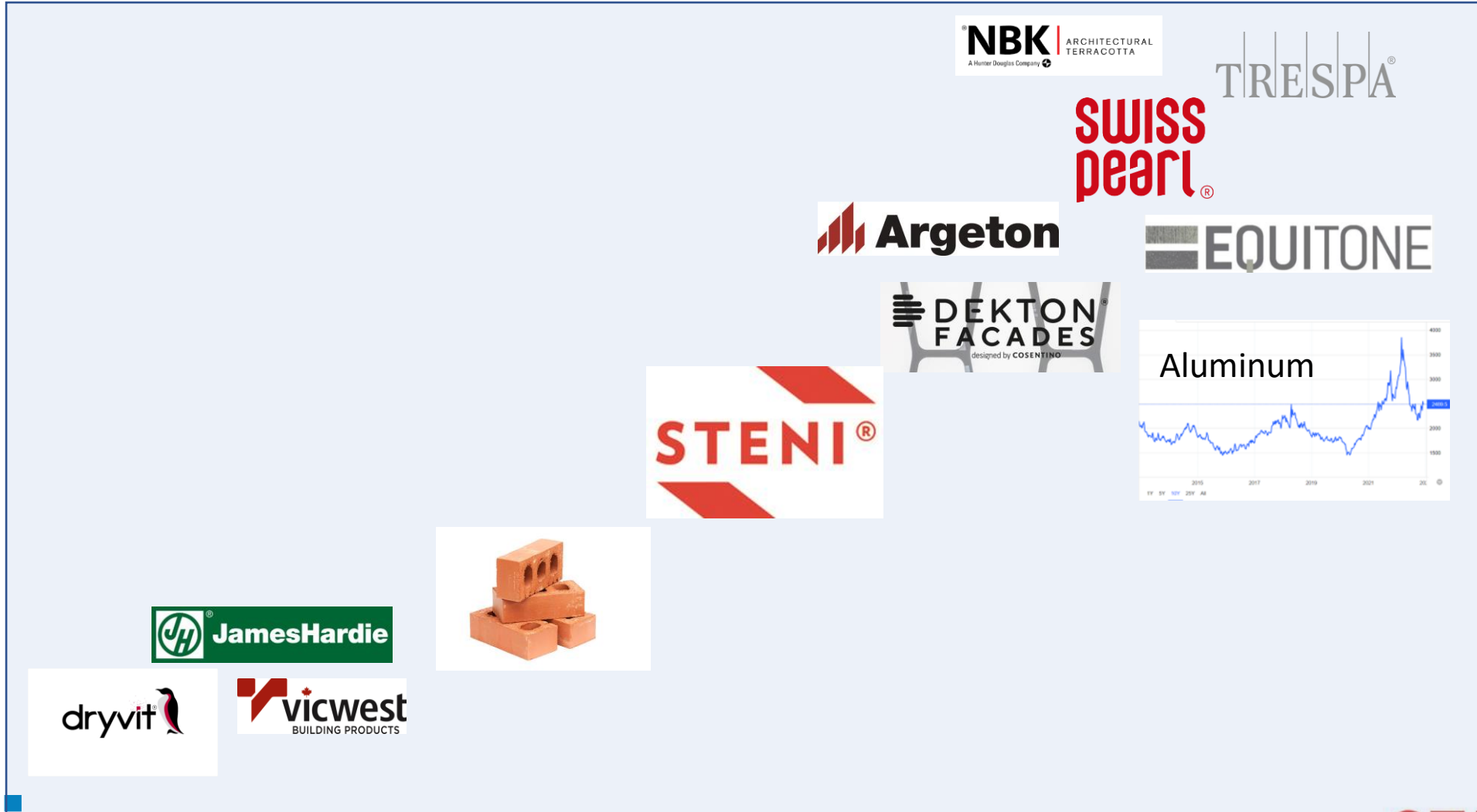
Cut to length

Inventory in Montreal!



J

Cost



J Strong Colours

Four main colour groups with 60 standard colour options and three gloss finishes









Steni Colour as art, Scott Thoe, CNC-cut



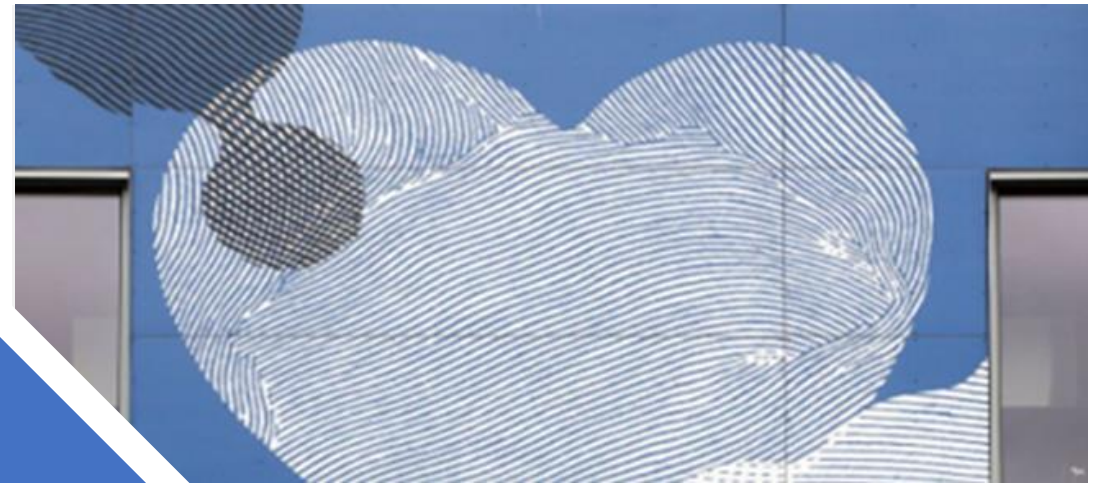
TUOMARILAN KINDERGARDEN – FINLAND

Architect Claudia Auer & Niclas Sandås



Steni Vision

Freedom and expression – Standard designs and custom options to allow freedom of expression



B

PRINSES BEATRIXSCHOOLO

33

B







J Natural Stone Finishes

Four main colour options - with four standard material grades



Steni Nature

Steni Nature – Stone & Glass



Best Design Solution for High Traffic Areas, like Schools

- **FRP with a stone core**
- 60 years in Canada; 60 year warranty.
- Norway & Montreal.
- Hundreds of projects in Canada.
- Natural stone and glass textured finish.
- Smooth colour or custom image panels.
- Foundation panels.
- Order the length what you want
- Or have standards cut in Montreal.
- Ease of installation: exposed, hidden and ship lap fastening



Steni in Design

Nerding Out



STENI NATURE

- Rough, natural
stone surface



CornerRadius and details

Budget Panel price +
\$30/ linear ft one corner
Two corners [column
covers] \$35/ linear ft



Panels can be bent at a 3,5 metre radius



B

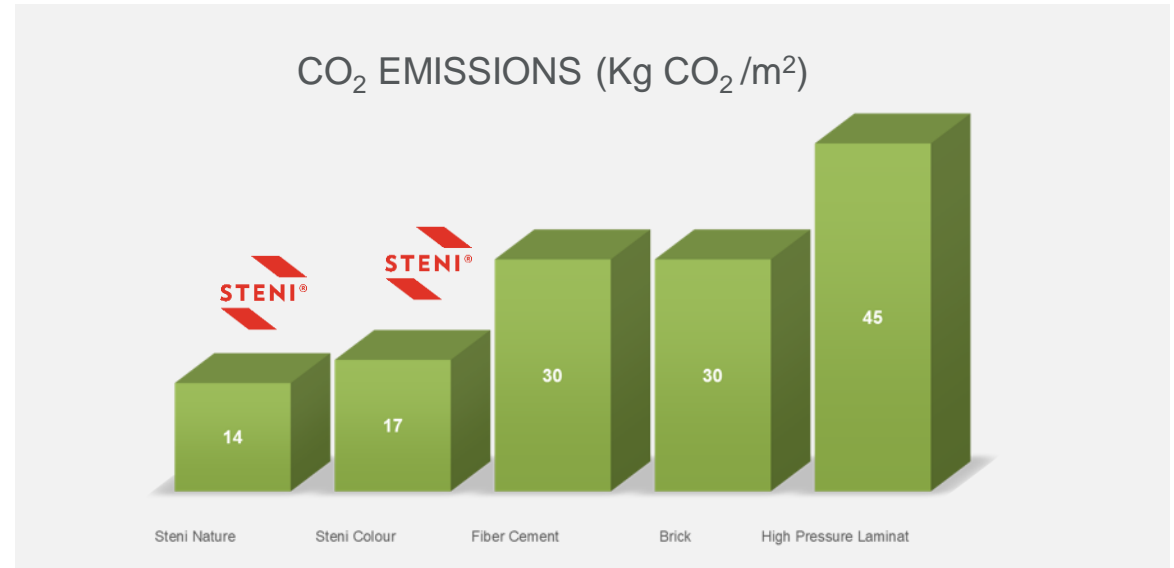
CO₂ emissions: 14 Kg/m² Steni Nature **17** Kg/m² Steni Colour

Source: Official EPD analyzes

Environmental profile

• Environmental classifications

- EPD documents (EPD Norway and Institut Bauen und Umwelt e.V.) (EU)
- ECO Product (Norway)
- Sunda Hus (Sweden)
- ECO Platform (EU)

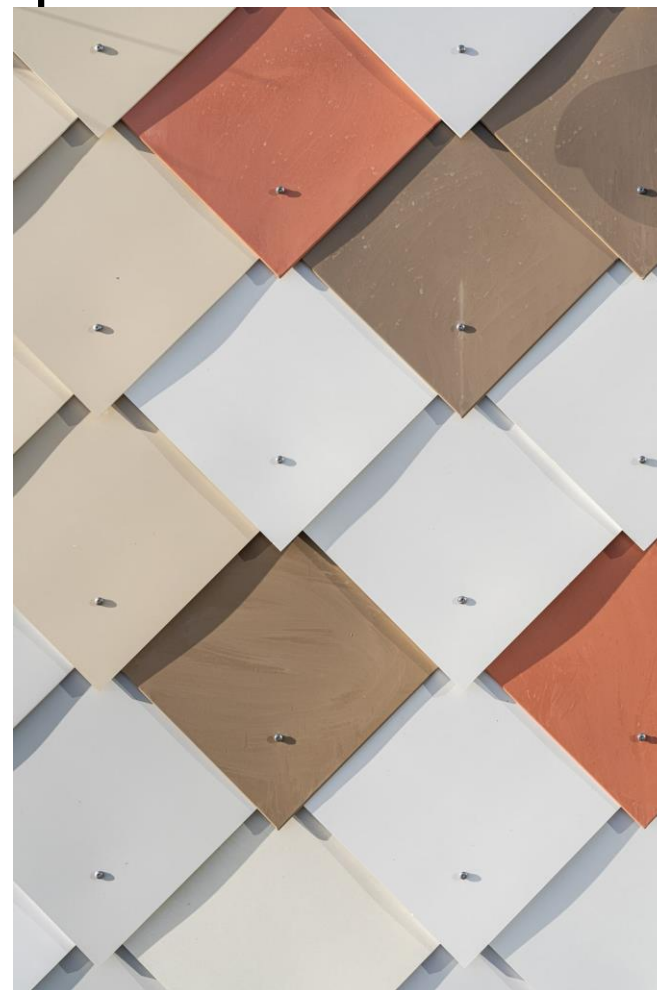


Facts

- Low global environmental impact
- No environmentally harmful substances
- BREEAM Excelent applicable
- Low LCC – 60Y warranty

Source: Bygganalyse AS (NS3454;2013)

35 year old
recycled Steni
panels



STENI®

Pattern Generator

VIDEO



Choose architecture



Choose product



Pick a surface



Export

STENI Vision Standard



Yellow Sandstone



Travertin



Rusty Corten



Concrete



SV10001



SV10002



SV10003



SV20001



SV20002





Recladding



Before Father Bressani Pretium Engineering



After Father Bressani Pretium Engineering



B

After Father Bressani
Pretium Engineering



B

**After Father Bressani
Pretium Engineering**





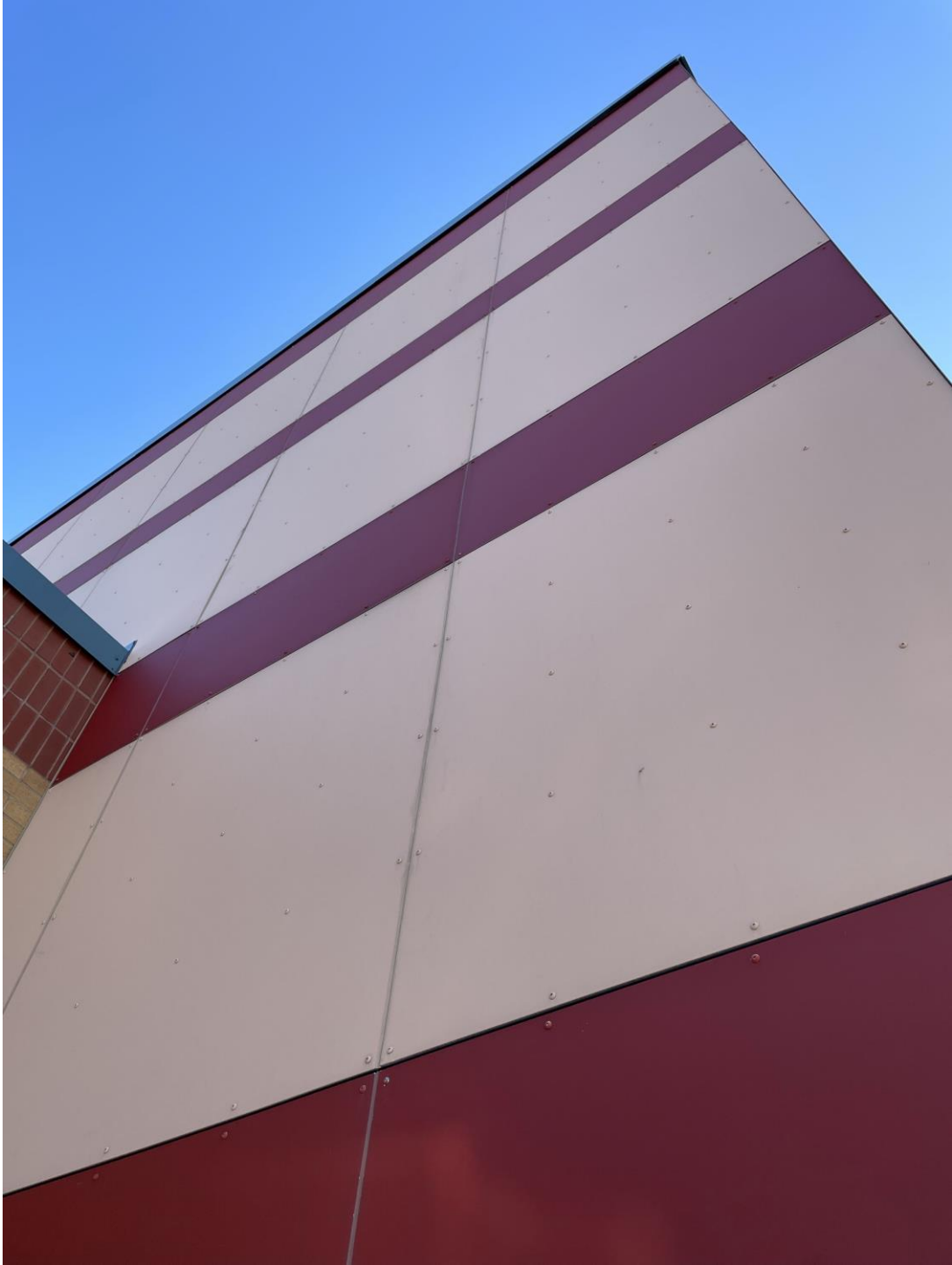






J

**Doncrest
Pretium Engineering**



J

**Doncrest
Pretium Engineering**



B Before Homeland P.S.
Pretium Engineering



B

After Homeland P.S.
Pretium Engineering



Before Sacred Heart CHS Pretium Engineering



After Sacred Heart CHS
Pretium Engineering



**After Sacred Heart CHS
Pretium Engineering**



J

Before Father Michael McGivney CA
Pretium Engineering

FATHER
MICHAEL MCGIVNEY
CATHOLIC
ACADEMY



Markham, Ontario



Google



J

After Father Michael McGivney CA Pretium Engineering



**New Carrefour High School,
Architect TLA Architects**

2017

\$28 / sq ft including panels, girts,
insulation, membranes and
installation



St Francis Assisi
Poirier Fontaine Architectes
2016
\$28 / sq ft recladding.



Recladding

2014

\$40 / sq ft [small area]
including panels, girts,
insulation, membranes and
installation on steel studs



**Ecole Marie-Clarac
School Board**
2015
\$28 / sq ft recladding. Façade,
soffits and returns.



B

School Board Head Office
Late 1970's
Look how clean original Nature
is with little to no maintenance





Look for System Choices – Demand Better



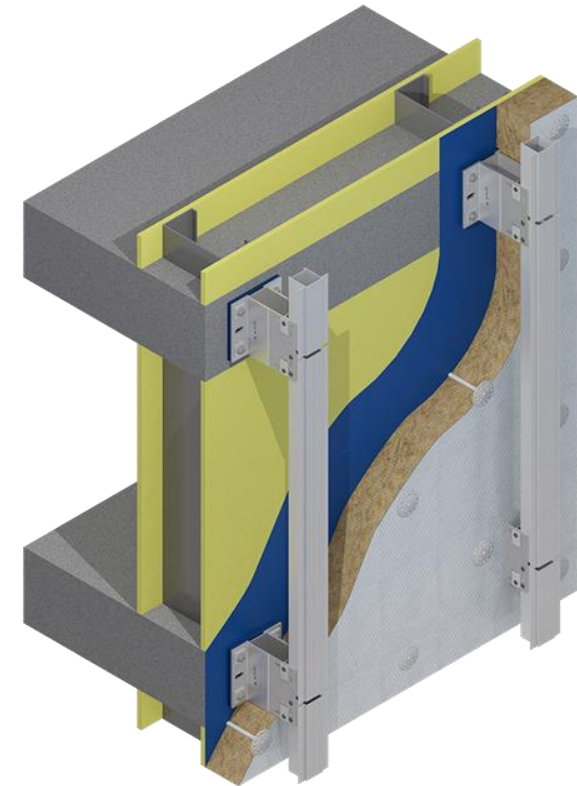
Simple



High Performance



Innovative
(slab-to-slab)



*And Everything Between

Build = Design Starts at Beginning



**Best accomplishments are at the beginning;
Greatest Failures Avoided are too.**

- Design review.
- Cladding layout review.
- Initial system recommendation.
- Initial **structural engineering** and resulting **thermal performance**.
- Comprehensive **value engineering**.
- **Cladding fabrication** recommendations.
- **Document creation; details, specifications.**
- **Budgeting.**



You Should Ask for This.



- Colour, not just for colour's sake
- Meet budgets
- Almost zero maintenance [easy to clean graffiti]
- Retrofit solutions
- Constructability
- Embedded Carbon
- Operating performance

This blew my mind. Let's explore the use of cast Glass Fibre Reinforced Concrete [GFRC]



This blew my mind. Cast GFRC offers affordable, extremely creative, constructable choices for remarkable facades.

Get this. It is in our back yard. This project is at [Yonge and Eglerslie](#)

Mahmoud owns [Petra Design](#), with more than 30+ years in the GFRC business. This is a very well known technology in Europe and the Middle East. We are scaling it here.

This webinar will cover
 What is GFRC, How is it used, and Case studies
 Explain form construction, pour, QC, release and subsystem
 Walk through cost drivers.
 Q&A

[Mahmoud Alfayez](#) of [Petra Design](#) will join me

REGISTER HERE FOR
 JUNE 7, NOON - 1PM
 EDT

Are You Building High Performance Facades?



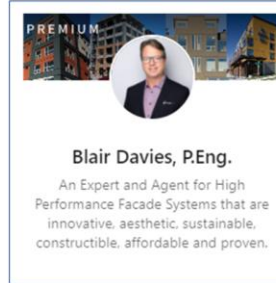
U-Kon High Performance Facades

Our popular series exploring:

- * Systems thinking
- * Design Precision and value engineering
- * Bespoke Systems
- * Innovation e.g. Passive House
- * Proper specification
- * Case Studies

Alex Mirilenko U-Kon Systems will be joining me

REGISTER HERE FOR
 JUNE 21, NOON - 1PM
 EDT



Subscribe for High Performance Facades Knowledge

Sign up to receive few (we do not fill your inbox) technical, inspiring, informative messages

Email

SIGN UP

B

