

ENVIRONMENTAL PRODUCT DECLARATION

IN ACCORDANCE WITH EN 15804+A2 & ISO 14025 / ISO 21930

Photocatalytic Fiber Cement Panel, Extrusion process
KMEW Co., Ltd.



EPD HUB, HUB-1313

Publishing date 19 April 2024, last updated on 19 April 2024, valid until 19 April 2029.

一般情報 - GENERAL INFORMATION

メーカー - MANUFACTURER

メーカー名 Manufacturer	KMEW Co., Ltd.
住所 Address	Crystal Tower 13F, 1-2-27, Shiromi 1-chome, Chuo-ku, Osaka Japan
問い合わせ先 Contact details	h.masui@kmew.co.jp
ウェブサイト Website	https://www.kmew.co.jp/company/

EPD 規格、スコープ、認証機関 - EPD STANDARDS, SCOPE AND VERIFICATION

プログラムオペレータ Program operator	EPD Hub, hub@epdhub.com
参照規格 Reference standard	EN 15804+A2:2019 and ISO 14025
PCR PCR	EPD Hub Core PCR Version 1.0, 1. Feb. 2022
製品カテゴリ Sector	Construction product
EPD カテゴリ Category of EPD	Third party verified EPD
親 EPD 番号 Parent EPD number	-
EPD のスコープ Scope of the EPD	Cradle to gate with modules C1-C4, D
EPD 申請者 EPD author	Hisashi masui

EPD 検証 EPD verification	Independent verification of this EPD and data, according to ISO 14025: <input type="checkbox"/> Internal verification <input checked="" type="checkbox"/> External verification
EPD 検証 EPD verifier	Magaly González Vázquez, as an authorized verifier acting for EPD Hub Limited

The manufacturer has the sole ownership, liability, and responsibility for the EPD. EPDs within the same product category but from different programs may not be comparable. EPDs of construction products may not be comparable if they do not comply with EN 15804 and if they are not compared in a building context.

製品 - PRODUCT

製品名 Product name	Photocatalytic Fiber Cement Panel, Extrusion process
追加ラベル Additional labels	NEOROCK Photocatalytic Fiber Cement Panel, Extrusion process 18
参照製品 Product reference	-
製造地 Place of production	Ashikaga Mill (Ashikaga, Tochigi, Japan)
データ取得年 Period for data	From April 2022 to March 2023
EPD 平均化 Averaging in EPD	Multiple products
A1-A3 の GWP-fossil 変動率 Variation in GWP-fossil for A1-A3	1.8 %

環境影響データ概要 - ENVIRONMENTAL DATA SUMMARY

宣言単位	1 ton
Declared unit	
宣言単位あたりの質量	1000 kg
Declared unit mass	
GWP-fossil, A1-A3 (kgCO ₂ e)	1,09E+03
GWP-fossil, A1-A3 (kgCO ₂ e)	
GWP-total, A1-A3 (kgCO ₂ e)	1,15E+03
GWP-total, A1-A3 (kgCO ₂ e)	
副資材の投入(%)	20.8
Secondary material, inputs (%)	
副資材のアウトプット(%)	0.48
Secondary material, outputs (%)	
エネルギー使用量計, A1-A3 (kWh)	3640
Total energy use, A1-A3 (kWh)	
水使用量計, A1-A3 (m ³ e)	5.06
Total water use, A1-A3 (m ³ e)	

製品とメーカー - PRODUCT AND MANUFACTURER

メーカーの概要 - ABOUT THE MANUFACTURER

KMEW Co., Ltd. is Japan's only manufacturer and distributor of overall exterior building materials, including roofing materials, exterior wall claddings, and rain gutters, founded in December 2003. The company contributes to the improvement of the living environment by providing products and services that utilise its unique technologies, such as photocatalytic technology for lightweight roofing and exterior wall materials to enhance the beauty and longevity of buildings.

製品説明 - PRODUCT DESCRIPTION

Extruded cladding product is a board-shape cement product which consists of blended materials with cementitious materials, fibre materials, recycled materials and chemical admixture extruded for hollow or solid shape. The shaped materials are then patterned, cured, dried and finally sent to decorative painting process. It is an excellent product in terms of lightweight, low environmental impacts, high fire resistance as well as strong and flexible characteristics that is commonly used for housing, shops, warehouses or offices. Name of products declared in this EPD: - NEOROCK Photocatalytic Fiber Cement Panel, Extrusion process 16 - NEOROCK Photocatalytic Fiber Cement Panel, Extrusion process 18 - FILTECT Photocatalytic Fiber Cement Panel, Extrusion process 16

Further information can be found at <https://www.kmew.co.jp/company/>.

主な原材料構成 - PRODUCT RAW MATERIAL MAIN COMPOSITION

原材料カテゴリ Raw material category	量、質量 - % Amount, mass - %	原材料源 Material origin
金属 Metals	0	
鉱物 Minerals	63	Japan
化石原料 Fossil materials	30	Japan
バイオマス原料 Bio-based materials	7	Japan

生物起源 CO2 含有量 - BIOGENIC CARBON CONTENT

Product's biogenic carbon content at the factory gate

製品の生物起源 CO2 含有量、kg C Biogenic carbon content in product, kg C	-
梱包の生物起源 CO2 含有量、kg C Biogenic carbon content in packaging, kg C	2.048

機能単位と耐用年数 - FUNCTIONAL UNIT AND SERVICE LIFE

宣言単位 Declared unit	1 ton
宣言単位あたりの質量 Mass per declared unit VP	1000 kg
機能単位 Functional unit	-
参照耐用年数 Reference service life	-

化学物質、REACH 高懸念物質 - SUBSTANCES, REACH - VERY HIGH CONCERN

The product does not contain any REACH SVHC substances in amounts greater than 0,1 % (1000 ppm).

製品のライフサイクル - PRODUCT LIFE-CYCLE

システム境界 - SYSTEM BOUNDARY

This EPD covers the life-cycle modules listed in the following table.

Product stage			Assembly stage		Use stage								End of life stage				Beyond the system boundaries		
A1	A2	A3	A4	A5	B1	B2	B3	B4	B5	B6	B7		C1	C2	C3	C4	D		
x	x	x	MND	MND	MND	MND	MND	MND	MND	MND	MND		x	x	x	x	x		
Raw materials	Transport	Manufacturing	Transport	Assembly	Use	Maintenance	Repair	Replacement	Refurbishment	Operational energy use	Operational water use		Deconstr./demol.	Transport	Waste processing	Disposal	Reuse	Recovery	Recycling

Modules not declared = MND. Modules not relevant = MNR.

製造と梱包 - MANUFACTURING AND PACKAGING (A1-A3)

The environmental impacts considered for the product stage cover the manufacturing of raw materials used in the production as well as packaging materials and other ancillary materials. Also, fuels used by machines, and handling of waste formed in the production processes at the manufacturing facilities are included in this stage. The study also considers the material losses occurring during the manufacturing processes as well as losses during electricity transmission.

Blended materials with cementitious materials, fiber materials, recycled materials and chemical admixture are extruded for hollow or solid shape and then patterned, cured, dried, dimensioned, decoratively painted, and finally shipped out as a finished product on a wooden pallet. This EPD considers raw materials procurement, transport to the production site, all the energy consumed during production as well as manufacturing wastes including production loss. The finished product is packed with plastic sheet, film and shipped out on wood pallets.

A1: Raw materials procurement. This includes extraction of raw materials and processing.

A2: Raw materials transportation. All the materials are assumed to be shipped by vessels or trucks to the production site and then stored.

A3: Manufacturing. This stage includes all the energy (electricity, city gas, LPG) consumed to operate machinery or equipment used during manufacturing processes. Manufacturing waste from ancillary materials, packaging materials as well as production losses are considered as well. The waste water from this stage is reused within the factory as recycled materials.

輸送と据付 - TRANSPORT AND INSTALLATION (A4-A5)

Transportation impacts occurred from final products delivery to construction site (A4) cover fuel direct exhaust emissions, environmental impacts of fuel production, as well as related infrastructure emissions.

-

製品使用とメンテナンス - PRODUCT USE AND MAINTENANCE (B1-B7)

-

Air, soil, and water impacts during the use phase have not been studied.

製品の廃棄・リサイクル段階 - PRODUCT END OF LIFE (C1-C4, D)

The end-of-life scenarios applied for product wastes and wooden pallets in this EPD are based on the internal data. The end-of-life scenarios applied for plastic wastes is according to the report Results of the 2018 survey on the actual status of construction by-products from Construction Recycling Promotion Plan conducted by Japanese Ministry of Land, Infrastructure, Transport and Tourism.

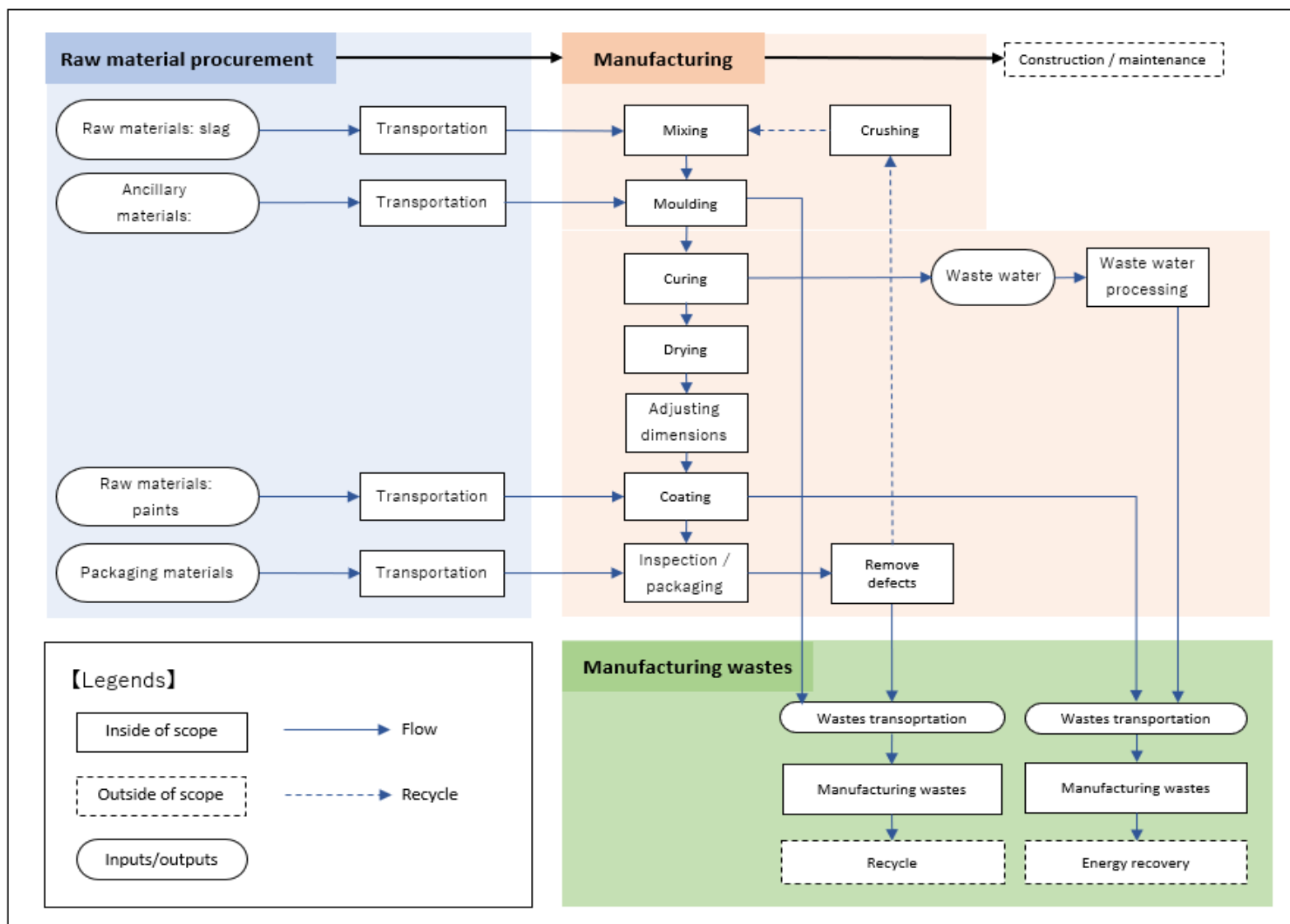
Energy considered for demolition of building (C1) is considered negligible and transportation distance and method to the treatment facility (C2) is assumed to be 50km by a truck in all scenarios.

Product wastes: 100% of the product is assumed to be landfilled.

Wooden pallets: 70% are collected by Kmeu themselves and reused as is. The remaining 30% are assumed to be collected and sent to chipping facility for recycling.

Plastic wastes: 38% are assumed to be collected and processed for recycling. The remaining 62% are assumed to be incinerated with energy recovery.

製造プロセス - MANUFACTURING PROCESS



ライフサイクルアセスメント - LIFE-CYCLE ASSESSMENT

カットオフ基準 - CUT-OFF CRITERIA

The study does not exclude any modules or processes which are stated mandatory in the reference standard and the applied PCR. The study does not exclude any hazardous materials or substances. The study includes all major raw material and energy consumption. All inputs and outputs of the unit processes, for which data is available for, are included in the calculation. There is no neglected unit process more than 1% of total mass or energy flows. The module specific total neglected input and output flows also do not exceed 5% of energy usage or mass.

配分、推定 - ALLOCATION, ESTIMATES AND ASSUMPTIONS

Allocation is required if some material, energy, and waste data cannot be measured separately for the product under investigation. All allocations are done as per the reference standards and the applied PCR. In this study, allocation has been done in the following ways:

データタイプ - Data type	配分 - Allocation
原材料 - Raw materials	No allocation
梱包材 - Packaging materials	Not applicable
補助材料 - Ancillary materials	Not applicable
製造エネルギーと廃棄物 - Manufacturing energy and waste	Allocated by mass or volume

平均値と変動率 - AVERAGES AND VARIABILITY

平均化の種類 - Type of average	Multiple products
平均化の方法 - Averaging method	Averaged by shares of total volume
A1-A3 における GWP-fossil の変動率 - Variation in GWP-fossil for A1-A3	1.8 %

In this EPD, averaging is done over three similar products as it is extremely difficult to collect data respectively due to its high similarity in its comprising raw materials as well as single production site. The input and output data of all the raw materials, packaging materials, ancillary materials, energy consumptions and manufacturing wastes are collected in the factory level and then averaged based on the production volume of each product. One of the product, Filtect Photocatalytic Ceramic 16, has slightly different compositions from other two products, therefore the blending ratio of raw materials are also considered. Results tables of Neorock 18mm are shown on the declaration as it is considered to be representative over these three products, with the highest production volume. The variance of A1-A3 GWP-total is below 1.8% compared to the baseline.

LCA ソフトウェアと参考文献 - LCA SOFTWARE AND BIBLIOGRAPHY

This EPD has been created using One Click LCA EPD Generator. The LCA and EPD have been prepared according to the reference standards and ISO 14040/14044. Ecoinvent v3.8 and One Click LCA databases were used as sources of environmental data.

環境影響データ - ENVIRONMENTAL IMPACT DATA

主な環境影響指標 - CORE ENVIRONMENTAL IMPACT INDICATORS – EN 15804+A2, PEF

Impact category	Unit	A1	A2	A3	A1-A3	A4	A5	B1	B2	B3	B4	B5	B6	B7	C1	C2	C3	C4	D
GWP – total ¹⁾	kg CO ₂ e	6,39E+02	2,67E+01	4,85E+02	1,15E+03	MND	MND	MND	MND	MND	MND	MND	MND	MND	MNR	1,16E+01	2,15E+00	8,10E+00	-3,14E+00
GWP – fossil	kg CO ₂ e	5,84E+02	2,67E+01	4,85E+02	1,09E+03	MND	MND	MND	MND	MND	MND	MND	MND	MND	MNR	1,16E+01	2,15E+00	8,09E+00	-3,14E+00
GWP – biogenic	kg CO ₂ e	0,00E+00	0,00E+00	0,00E+00	0,00E+00	MND	MND	MND	MND	MND	MND	MND	MND	MND	MNR	0,00E+00	0,00E+00	0,00E+00	0,00E+00
GWP – LULUC	kg CO ₂ e	5,56E+01	1,35E-02	7,82E-02	5,57E+01	MND	MND	MND	MND	MND	MND	MND	MND	MND	MNR	5,65E-03	1,22E-04	9,22E-03	-4,97E-03
Ozone depletion pot.	kg CFC ₁₁ e	3,78E-05	5,68E-06	4,62E-05	8,97E-05	MND	MND	MND	MND	MND	MND	MND	MND	MND	MNR	2,46E-06	1,60E-08	3,56E-06	-3,56E-07
Acidification potential	mol H ⁺ e	2,76E+00	2,04E-01	1,21E+00	4,16E+00	MND	MND	MND	MND	MND	MND	MND	MND	MND	MNR	4,70E-02	7,45E-04	7,19E-02	-2,16E-02
EP-freshwater ²⁾	kg Pe	2,05E-02	2,29E-04	5,62E-03	2,64E-02	MND	MND	MND	MND	MND	MND	MND	MND	MND	MNR	1,10E-04	3,15E-06	2,01E-04	-1,20E-04
EP-marine	kg Ne	6,84E-01	5,37E-02	2,07E-01	9,45E-01	MND	MND	MND	MND	MND	MND	MND	MND	MND	MNR	1,32E-02	2,76E-04	2,18E-02	-3,82E-03
EP-terrestrial	mol Ne	5,91E+00	5,95E-01	2,30E+00	8,80E+00	MND	MND	MND	MND	MND	MND	MND	MND	MND	MNR	1,46E-01	2,97E-03	2,40E-01	-4,29E-02
POCP (“smog”) ³⁾	kg NMVOCe	1,72E+00	1,68E-01	7,42E-01	2,63E+00	MND	MND	MND	MND	MND	MND	MND	MND	MND	MNR	4,46E-02	7,82E-04	7,29E-02	-1,32E-02
ADP-minerals & metals ⁴⁾	kg Sbe	1,33E-02	1,05E-04	4,94E-04	1,39E-02	MND	MND	MND	MND	MND	MND	MND	MND	MND	MNR	5,22E-05	1,09E-06	2,29E-05	-1,03E-05
ADP-fossil resources	MJ	4,65E+03	3,76E+02	6,69E+03	1,17E+04	MND	MND	MND	MND	MND	MND	MND	MND	MND	MNR	1,64E+02	8,48E-01	2,50E+02	-4,27E+01
Water use ⁵⁾	m ³ e depr.	1,63E+02	1,71E+00	3,07E+01	1,96E+02	MND	MND	MND	MND	MND	MND	MND	MND	MND	MNR	7,98E-01	5,64E-02	9,00E-01	-1,00E+00

1) GWP = Global Warming Potential; 2) EP = Eutrophication potential. Required characterisation method and data are in kg P-eq. Multiply by 3,07 to get PO₄e; 3) POCP = Photochemical ozone formation; 4) ADP = Abiotic depletion potential; 5) EN 15804+A2 disclaimer for Abiotic depletion and Water use and optional indicators except Particulate matter and Ionizing radiation, human health. The results of these environmental impact indicators shall be used with care as the uncertainties on these results are high or as there is limited experience with the indicator.

追加(オプション)の環境影響指標 - ADDITIONAL (OPTIONAL) ENVIRONMENTAL IMPACT INDICATORS – EN 15804+A2, PEF

Impact category	Unit	A1	A2	A3	A1-A3	A4	A5	B1	B2	B3	B4	B5	B6	B7	C1	C2	C3	C4	D
Particulate matter	Incidence	3,31E-05	1,90E-06	4,26E-06	3,92E-05	MND	MND	MND	MND	MND	MND	MND	MND	MND	MNR	8,56E-07	8,22E-09	1,24E-06	-2,94E-07
Ionizing radiation ⁶⁾	kBq U235e	2,36E+01	1,74E+00	2,24E+01	4,78E+01	MND	MND	MND	MND	MND	MND	MND	MND	MND	MNR	7,62E-01	7,64E-03	1,12E+00	-2,91E-01
Ecotoxicity (freshwater)	CTUe	1,37E+04	3,49E+02	2,67E+03	1,67E+04	MND	MND	MND	MND	MND	MND	MND	MND	MND	MNR	1,60E+02	6,66E+00	2,91E+03	-6,57E+01
Human toxicity, cancer	CTUh	2,85E-07	1,18E-08	1,00E-07	3,98E-07	MND	MND	MND	MND	MND	MND	MND	MND	MND	MNR	5,01E-09	5,25E-10	2,47E-07	-9,40E-09
Human tox. non-cancer	CTUh	1,12E-05	3,07E-07	1,72E-06	1,33E-05	MND	MND	MND	MND	MND	MND	MND	MND	MND	MNR	1,43E-07	4,97E-09	8,71E-06	-3,86E-08
SQP ⁷⁾	-	7,00E+03	2,13E+02	1,57E+03	8,78E+03	MND	MND	MND	MND	MND	MND	MND	MND	MND	MNR	9,78E+01	6,60E-01	9,62E+02	-7,12E+02

6) EN 15804+A2 disclaimer for Ionizing radiation, human health. This impact category deals mainly with the eventual impact of low dose ionizing radiation on human health of the nuclear fuel cycle. It does not consider effects due to possible nuclear accidents, occupational exposure nor due to radioactive waste disposal in underground facilities. Potential ionizing radiation from the soil, from radon and from some construction materials is also not measured by this indicator; 7) SQP = Land use related impacts/soil quality.

天然資源の利用 - USE OF NATURAL RESOURCES

Impact category	Unit	A1	A2	A3	A1-A3	A4	A5	B1	B2	B3	B4	B5	B6	B7	C1	C2	C3	C4	D
Renew. PER as energy ⁸⁾	MJ	8,61E+02	4,70E+00	2,67E+02	1,13E+03	MND	MND	MND	MND	MND	MND	MND	MND	MND	MNR	2,24E+00	8,85E-02	2,33E+00	-4,81E+01
Renew. PER as material	MJ	0,00E+00	0,00E+00	0,00E+00	0,00E+00	MND	MND	MND	MND	MND	MND	MND	MND	MND	MNR	0,00E+00	0,00E+00	0,00E+00	0,00E+00
Total use of renew. PER	MJ	8,61E+02	4,70E+00	2,67E+02	1,13E+03	MND	MND	MND	MND	MND	MND	MND	MND	MND	MNR	2,24E+00	8,85E-02	2,33E+00	-4,81E+01
Non-re. PER as energy	MJ	5,01E+03	3,76E+02	6,61E+03	1,20E+04	MND	MND	MND	MND	MND	MND	MND	MND	MND	MNR	1,64E+02	8,48E-01	2,50E+02	-3,92E+01
Non-re. PER as material	MJ	0,00E+00	0,00E+00	0,00E+00	0,00E+00	MND	MND	MND	MND	MND	MND	MND	MND	MND	MNR	0,00E+00	0,00E+00	0,00E+00	0,00E+00
Total use of non-re. PER	MJ	5,01E+03	3,76E+02	6,61E+03	1,20E+04	MND	MND	MND	MND	MND	MND	MND	MND	MND	MNR	1,64E+02	8,48E-01	2,50E+02	-3,92E+01
Secondary materials	kg	2,08E+02	1,48E-01	2,53E+03	2,74E+03	MND	MND	MND	MND	MND	MND	MND	MND	MND	MNR	6,61E-02	2,22E-03	4,52E-02	-1,45E-01
Renew. secondary fuels	MJ	6,32E-02	1,80E-03	1,75E+00	1,82E+00	MND	MND	MND	MND	MND	MND	MND	MND	MND	MNR	9,06E-04	1,98E-05	2,06E-03	-1,24E+00
Non-ren. secondary fuels	MJ	0,00E+00	0,00E+00	0,00E+00	0,00E+00	MND	MND	MND	MND	MND	MND	MND	MND	MND	MNR	0,00E+00	0,00E+00	0,00E+00	0,00E+00
Use of net fresh water	m ³	4,25E+00	4,47E-02	7,63E-01	5,06E+00	MND	MND	MND	MND	MND	MND	MND	MND	MND	MNR	2,10E-02	1,38E-03	2,98E-01	-2,21E-02

8) PER = Primary energy resources.

廃棄・リサイクル段階 — 廃棄 - END OF LIFE – WASTE

Impact category	Unit	A1	A2	A3	A1-A3	A4	A5	B1	B2	B3	B4	B5	B6	B7	C1	C2	C3	C4	D
Hazardous waste	kg	5,58E+01	5,95E-01	2,12E+01	7,76E+01	MND	MND	MND	MND	MND	MND	MND	MND	MND	MNR	2,72E-01	7,22E-03	1,00E+03	-2,33E-01
Non-hazardous waste	kg	1,39E+03	8,99E+00	2,18E+02	1,62E+03	MND	MND	MND	MND	MND	MND	MND	MND	MND	MNR	4,31E+00	9,87E-01	0,00E+00	-4,21E+00
Radioactive waste	kg	1,33E-02	2,47E-03	6,59E-03	2,24E-02	MND	MND	MND	MND	MND	MND	MND	MND	MND	MNR	1,07E-03	1,66E-06	0,00E+00	-1,84E-04

廃棄・リサイクル段階 — 出力フロー - END OF LIFE – OUTPUT FLOWS

Impact category	Unit	A1	A2	A3	A1-A3	A4	A5	B1	B2	B3	B4	B5	B6	B7	C1	C2	C3	C4	D
Components for re-use	kg	0,00E+00	0,00E+00	2,53E+03	2,53E+03	MND	MND	MND	MND	MND	MND	MND	MND	MND	MNR	0,00E+00	2,35E+00	0,00E+00	0,00E+00
Materials for recycling	kg	0,00E+00	0,00E+00	2,46E+01	2,46E+01	MND	MND	MND	MND	MND	MND	MND	MND	MND	MNR	0,00E+00	1,54E+00	0,00E+00	0,00E+00
Materials for energy rec	kg	0,00E+00	0,00E+00	1,21E+01	1,21E+01	MND	MND	MND	MND	MND	MND	MND	MND	MND	MNR	0,00E+00	8,73E-01	0,00E+00	0,00E+00
Exported energy	MJ	0,00E+00	0,00E+00	0,00E+00	0,00E+00	MND	MND	MND	MND	MND	MND	MND	MND	MND	MNR	0,00E+00	1,96E+01	0,00E+00	0,00E+00

環境影響 - ENVIRONMENTAL IMPACTS – EN 15804+A1, CML / ISO 21930

Impact category	Unit	A1	A2	A3	A1-A3	A4	A5	B1	B2	B3	B4	B5	B6	B7	C1	C2	C3	C4	D
Global Warming Pot.	kg CO ₂ e	6,30E+02	2,65E+01	4,71E+02	1,13E+03	MND	MND	MND	MND	MND	MND	MND	MND	MND	MNR	1,14E+01	2,15E+00	7,87E+00	-3,10E+00
Ozone depletion Pot.	kg CFC-11e	3,32E-05	4,50E-06	4,04E-05	7,81E-05	MND	MND	MND	MND	MND	MND	MND	MND	MND	MNR	1,95E-06	1,55E-08	2,82E-06	-2,87E-07
Acidification	kg SO ₂ e	2,23E+00	1,61E-01	1,01E+00	3,40E+00	MND	MND	MND	MND	MND	MND	MND	MND	MND	MNR	3,69E-02	5,49E-04	5,56E-02	-1,79E-02
Eutrophication	kg PO ₄ ³ e	1,36E+00	2,72E-02	2,31E-01	1,62E+00	MND	MND	MND	MND	MND	MND	MND	MND	MND	MNR	8,68E-03	7,71E-04	1,71E-01	-5,28E-03
POCP ("smog")	kg C ₂ H ₄ e	1,76E-01	5,34E-03	6,23E-02	2,44E-01	MND	MND	MND	MND	MND	MND	MND	MND	MND	MNR	1,54E-03	2,43E-05	3,25E-03	-1,03E-03
ADP-elements	kg Sbe	5,12E-03	1,02E-04	4,92E-04	5,71E-03	MND	MND	MND	MND	MND	MND	MND	MND	MND	MNR	5,09E-05	8,72E-07	2,26E-05	-1,02E-05
ADP-fossil	MJ	5,15E+03	3,76E+02	6,69E+03	1,22E+04	MND	MND	MND	MND	MND	MND	MND	MND	MND	MNR	1,64E+02	8,47E-01	2,50E+02	-4,27E+01

検証報告 - VERIFICATION STATEMENT

本 EPD の検証プロセス - VERIFICATION PROCESS FOR THIS EPD

This EPD has been verified in accordance with ISO 14025 by an independent, third-party verifier by reviewing results, documents and compliancy with reference standard, ISO 14025 and ISO 14040/14044, following the process and checklists of the program operator for:

- This Environmental Product Declaration
- The Life-Cycle Assessment used in this EPD
- The digital background data for this EPD

Why does verification transparency matter? [Read more online](#)

This EPD has been generated by One Click LCA EPD generator, which has been verified and approved by the EPD Hub.

第三者検証報告 - THIRD-PARTY VERIFICATION STATEMENT

I hereby confirm that, following detailed examination, I have not established any relevant deviations by the studied Environmental Product Declaration (EPD), its LCA and project report, in terms of the data collected and used in the LCA calculations, the way the LCA-based calculations have been carried out, the presentation of environmental data in the EPD, and other additional environmental information, as present with respect to the procedural and methodological requirements in ISO 14025:2010 and reference standard.

I confirm that the company-specific data has been examined as regards plausibility and consistency; the declaration owner is responsible for its factual integrity and legal compliance.

I confirm that I have sufficient knowledge and experience of construction products, this specific product category, the construction industry, relevant standards, and the geographical area of the EPD to carry out this verification.

I confirm my independence in my role as verifier; I have not been involved in the execution of the LCA or in the development of the declaration and have no conflicts of interest regarding this verification.

Magaly González Vázquez, as an authorized verifier acting for EPD Hub Limited

19.04.2024

