



CERACLAD  
Rain Screen Exterior Siding System



CERACLAD

SUPERIOR CLADDING SOLUTIONS  
FOR SUSTAINABLE BUILDINGS AND  
A HEALTHY LIVING ENVIRONMENT

**MORE CHOICES!**

# MORE CHOICES

Too much of a good thing  
is a good thing.

## **MORE ADVANCED TECHNOLOGY, QUALITY, AND PERFORMANCE**

The **CERACLAD** high-performance vented wall cladding system incorporates the highest quality materials and advanced manufacturing processes to provide long-term protection against water, wind, sunlight, and changing thermal conditions. The attractive and durable exterior surfaces are easy to clean and maintain, so they will keep their beautiful appearance for years to come.

## **MORE TEXTURES AND STYLES**

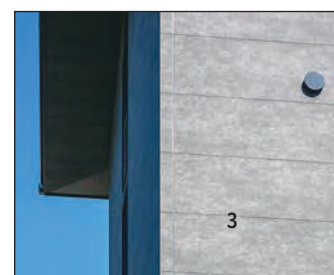
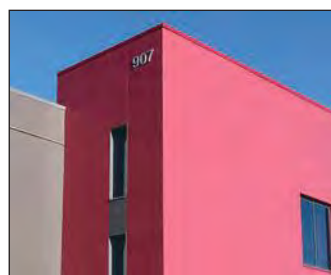
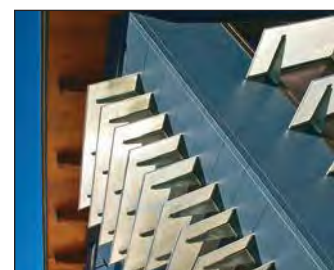
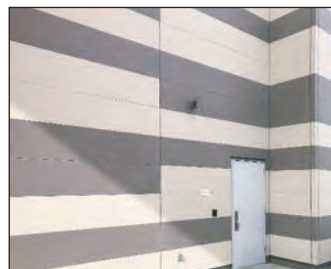
The difference is in the details. **CERACLAD** offers a wide selection of textures and colors from subtle to sophisticated, making it easier for you to bring variety and visual interest to every setting from residential neighborhoods to high-density mixed-use environments. And this year, we've added more new designs to choose from.

## MORE COLORS

Choice is good. With new products, we now have even more variety in our palette of beautiful shades. And if that's not enough, you have almost unlimited color choices through our **CREATIV™** program. Just send us your favorite swatch or paint-manufacturer color number and we'll make a match for your approval.

## MORE INSTALLATION SUPPORT

Execution is everything. That's why your **CERACLAD** panels and accessories arrive at the construction site packaged, labeled, and ready to install. If you'd like more assistance, we'll send one of our expert technicians for an on-site demonstration to help make your installation even easier.





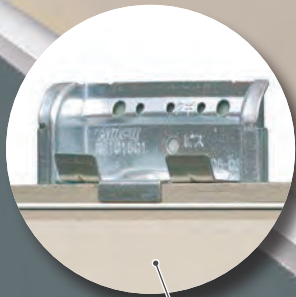
# CERACLAD

Rain Screen Exterior Siding System

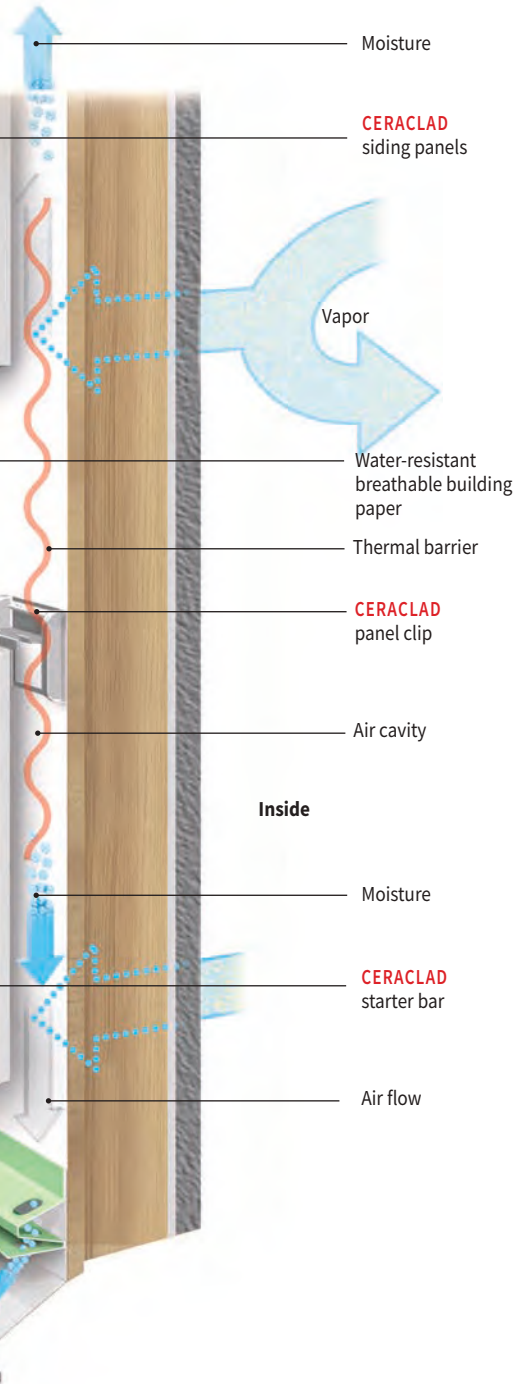
The shiplap and the factory applied gasket ensure a tight seal between joints.



Outside



Our proprietary clips provide quick and accurate assembly of the system every time.



Our customers love a good thing.

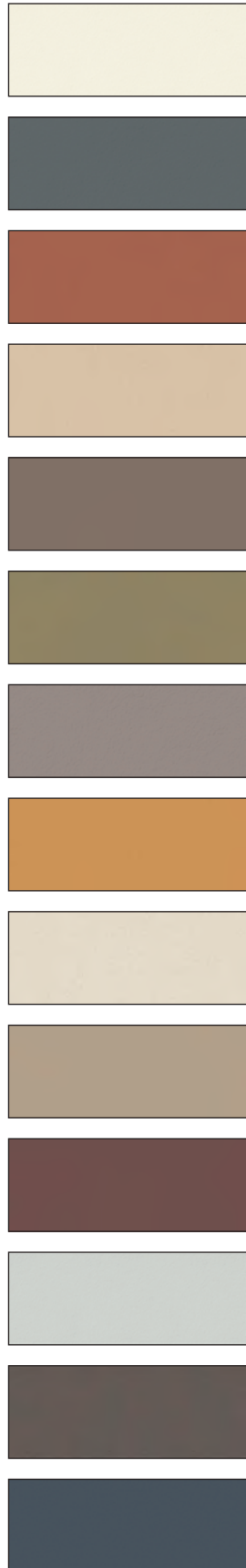
### THE CERACLAD SYSTEM

The **CERACLAD** Rainscreen Exterior Siding System is an advanced ceramic-coated construction assembly that incorporates proven rain-shielding technology. Developed for use in commercial and residential buildings, the system consists of pre-finished siding panels and innovative mounting clips and accessories that are manufactured and designed for durability, flexibility and ease of installation.

Our exclusive technology combines a durable weather-resistant exterior with an internal ventilation layer that allows moisture to escape. Proven in continuous use for over 35 years, the **CERACLAD** system offers

long-term protection against water infiltration, stands up to UV rays, and guards against dry rot. The result is high-performance, low-maintenance exterior walls that are as beautiful as they are durable. Buildings constructed with **CERACLAD** ceramic siding reflect the quality, care, and sophisticated design that go into everything we manufacture.

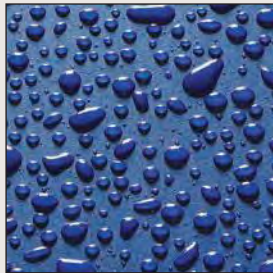
**CERACLAD** siding panels also come in a wide range of rich textures, handsome styles and beautiful colors. And our exclusive **CREATIV™** custom color program allows you to order your components in colors that will match your exact specifications.



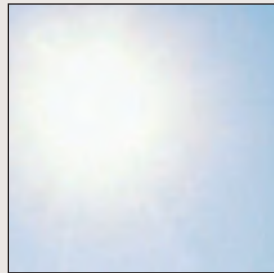


## And the good things just keep coming.

The **CERA CLAD** difference is more than skin deep. No other exterior wall assembly system offers our unique combination of quality manufacturing, sustainable materials, ease of installation, construction support, and low maintenance in such a wide range of textures and colors.



The heat-resistant, UV-blocking ceramic coated finish on **CERA CLAD** siding repels moisture, provides a high performance surface that



resists fading and discoloration, reduces maintenance costs for re-painting, and increases the value of the building.

### **EASY TO DESIGN**

Revit Wall Assemblies make it simple to integrate **CERA CLAD** products into your projects. The online Revit Material Library contains 2D hatch patterns and 3D textures for all **CERA CLAD** exterior products.

### **EASY TO SPECIFY**

We take the guesswork out of specifying a fully ventilated rainscreen. The **CERA CLAD** system includes everything you need for a functional ventilated rainscreen, even the fasteners!

### **EASY TO MAINTAIN**

With our proprietary ceramic coating, the color and finish of your project will stay looking vibrant and new for decades, resulting in less maintenance over the lifespan of the building.

### **WARRANTIED**

#### **CERAMIC COATED PANELS**

**CERA CLAD** ceramic coated panels are available in multiple styles and factory-finished proprietary colors. All come with a 20 year color guarantee.

#### **CUSTOM COLOR PANELS**

**CERA CLAD CREATIV™** custom color panels are made with two factory-applied finish coats to protect the panels from ultraviolet rays and minimize discoloration on the building exterior. They come with a 15 year finish warranty.

## HIGH PERFORMANCE

Manufactured and proven in Japan for more than 35 years, the **CERACLAD** Rainscreen Exterior Siding System:

- ✓ allows moisture to escape from within walls
- ✓ helps prevent mold, health problems and dry-rot in walls
- ✓ helps provide a healthy living environment
- ✓ improves sustainability of the building
- ✓ provides savings in maintenance and energy consumption
- ✓ is available in a wide variety of colors and textures
- ✓ creates a seamless panelized appearance
- ✓ reduces construction time and cost
- ✓ is environmentally low impact, using approximately 45% recycled materials

## MORE RESOURCES

Our website has all the detailed information you need to make specifying your next **CERACLAD** project simple:

- ✓ Product photos and details
- ✓ Revit downloads
- ✓ CAD details
- ✓ 3-Part spec
- ✓ Testing data
- ✓ Installation videos
- ✓ Installation guide and manual

Visit <https://ceraclad.com/resources>

<https://ceraclad.com/resources>

**CERACLAD** MENU

### Technical Information

CERACLAD exterior panels meet or exceed the standards of ASTM 1186 and ICC-ES AC-90.

CERACLAD products are Type A, Grade I as defined in ASTM 1186. Ceraclad panels are non-combustible and are approved for construction types I, II, III, IV, and V.

<b>Brochures</b>	CERACLAD Product Catalog CERACLAD CREATIV Custom Color Panels CERACLAD Case Studies SOLIDO Interior Panels
<b>CAD Details</b>	CAD Details_PDF_Horizontal_Wood Framing_Wood Sheathing CAD Details_PDF_Horizontal_Steel Framing_Wood Sheathing CAD Details_PDF_Vertical_Wood Framing_Wood Sheathing CAD Details_PDF_Vertical_Steel Framing_Wood Sheathing CAD Details_DXF_Vertical_Wood Framing_Wood Sheathing CAD Details_DXF_Horizontal_Wood Framing_Wood Sheathing CAD Details_DXF_Horizontal_Steel Framing_Wood Sheathing CAD Details_DXF_Vertical_Steel Framing_Wood Sheathing
<b>Health and Safety</b>	CERACLAD_HPQ.pdf CERACLAD_Red_tst_Compliance.pdf Panels (Solid Core) Panels (Hollow Core) Touch-up Paint Hardener Touch-up Paint Base Touch-up Paint Primer Repair Putty
<b>Installation Instructions</b>	Installation Guidelines Installation Manual Care and Maintenance
<b>Reports and Certifications</b>	ICC ESR-1627
<b>Specifications</b>	Ceraclad 3 Part Guide Specification 07.46.84
<b>Technical Bulletins</b>	Bulletin - Horizontal Panels over Continuous Insulation Bulletin - Vertical Panels over Continuous Insulation
<b>Technical Data Sheets</b>	Hollow Core Panels and Corners Solid Core Panels and Corners Solids
<b>Warranty</b>	Ceraclad Express Limited Transferable Warranty

**CERACLAD** DOWNLOAD FOR REVIT

PRODUCTS GALLERY TECHNICAL RESOURCES CONTACT

PRIVACY POLICY TERMS AND CONDITIONS

13359 NE 90th Street, Redmond, WA 98052 | (425) 883-9290

© 2020 CERACLAD



# MORE COLORS

Our patterns —  
your flair for color.

We heard you! You wanted more choices and we brought you **CREATIV™**, the **CERA CLAD** custom color program with nearly unlimited choices.

We keep those colors true with two factory-applied finish coats to protect **CERA CLAD CREATIV™** panels from damaging ultraviolet rays for 15 years, warrantied.

**LEARN MORE AT CERA CLAD.COM**





# CREATIV™ PROGRAM SUMMARY

## COLOR SELECTION

Select your color, submit your order form, available on our website, and receive your samples.

## COLOR APPROVAL

Sign the back of one sample using a permanent black marker. Complete and sign the Custom Color Product Approval Form provided electronically when you received the custom color samples. Send the signed sample and completed form to **CERACLAD**.

## ORDER PRODUCT

Submit your purchase order as you normally would and include the unique SKU number(s) as your color selection.

## PROGRAM DETAILS

Our **CREATIV™** custom color finish utilizes a two-coat finish system: color plus protective coating to provide additional UV resistance and color stability.

Select a custom color from a **CERACLAD CREATIV™** color fan deck or send us a Benjamin Moore or Sherwin Williams color number and let us match your selection for you.\* **CERACLAD CREATIV™** is available in Contemporary Smooth, Zen Garden, Textured Stucco, 8 Reveal, and Cast Stripe.

**CERACLAD** will produce 4" x 8" **CREATIV™** color samples for your approval and send them to you within two weeks of our receipt of your Color Selection Form, unless otherwise noted. If the samples don't meet your requirements, you may submit a new Color Selection Form. Once you are satisfied with the color samples, fill out the Custom Color Product Approval Form, send it to us, and we will provide unique SKU numbers for all products and colors for easy ordering.

**CREATIV™** orders will be shipped from our finish factory in eight to ten (8–10) weeks from the date of acceptance of your purchase order.

\* Certain colors are only available for indoor applications. Contact your local representative for more details or assistance with your custom color selection.

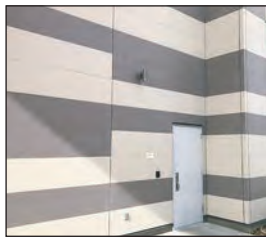
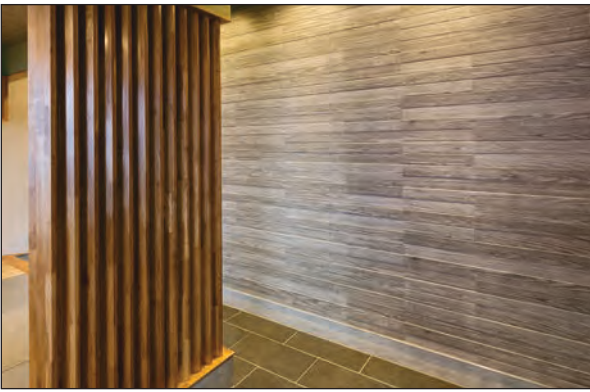




## The sky is the limit.

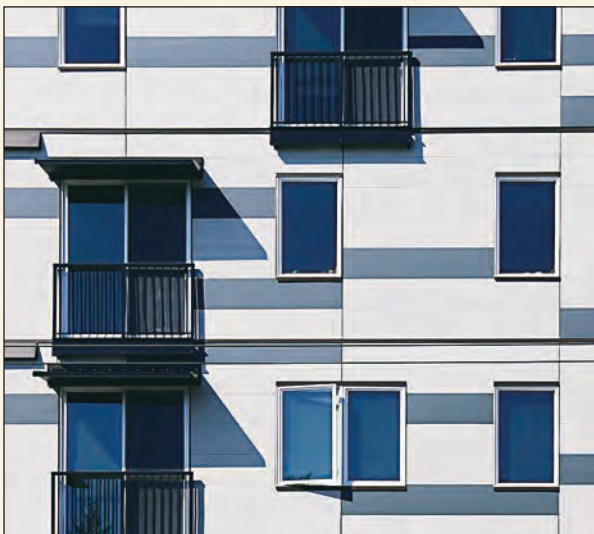
The almost unlimited combinations of textures and colors of the **CERA CLAD** system and **CREATIV™** program give you the ability to explore your creative limits with confidence, knowing our product quality, ease of installation, installation support, and low maintenance are backed by the best warranties in the industry.







Contemporary Smooth | Linen  
Contemporary Smooth | Slate

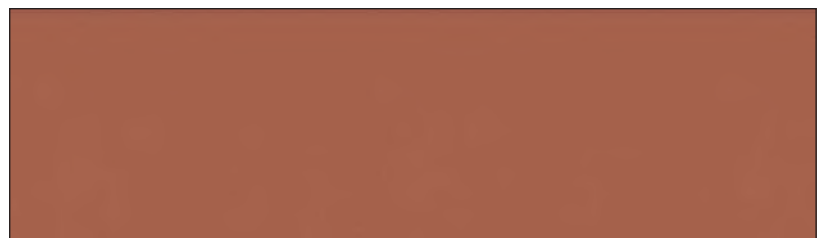
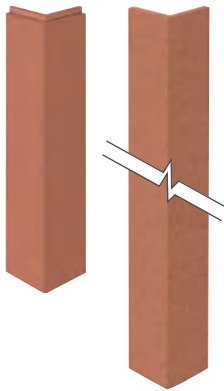


Silk | HEM90851H

# Contemporary Smooth

CERACLAD Contemporary Smooth is available in these 15 ceramic colors plus our **CREATIV™** custom color program.

Custom color samples can be requested at <https://ceraclad.com/creativ-custom-color>



Saffron | HEM90861H

BASIC SPECIFICATIONS	
<b>Panel Type</b>	Filtrated
<b>Application Method</b>	Vertical or Horizontal
<b>Coating Options</b>	Ceramic (15 colors) Creativ™ Custom Colors
<b>Dimensions</b>	W: 18" (455 mm) L: 10' (3030 mm) T: 5/8" (16 mm)
<b>Coverage</b>	15 ft <sup>2</sup> (1.38 m <sup>2</sup> )
<b>Weight</b>	60 lb. (27 kg)
The ceramic coating is super weather resistant, low maintenance, and backed by a 20-year limited warranty.	
Please visit our website for additional CERACLAD product information including: <ul style="list-style-type: none"> <li>• Product samples</li> <li>• Custom color samples</li> <li>• Specifications</li> <li>• CAD details</li> <li>• Product performance and approval documents</li> <li>• MSDS</li> </ul>	

1. The product color tones on this sheet may appear slightly different from the actual products. Final color selection should be made from product samples.
2. Colors and textures are subject to change.
3. Damage caused by any product installation, repair, or replacement that is not in accordance with KMEW's technical manual, as well as damage caused by product installation on inappropriate buildings/structures, is specifically excluded from warranty coverage. Please review KMEW's technical manual and website for this product.
4. Please note that this texture uses filtrated panels and cannot be used in areas where freeze/thaw weathering occurs more than 80 days per year.



Textured Stucco | Linen  
Contemporary Smooth | Brass

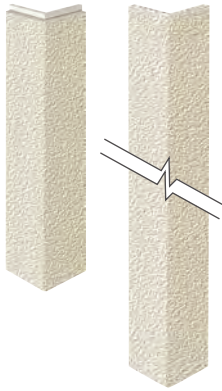


Linen | HNM34452RU

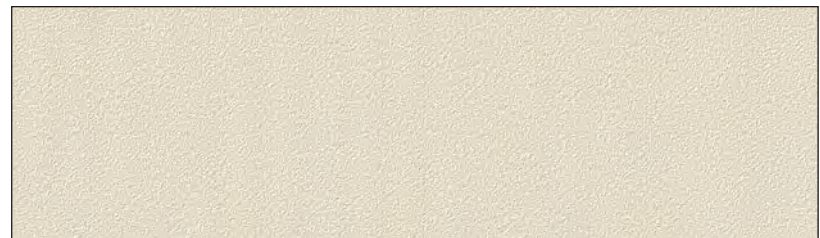
# Textured Stucco

**CERACLAD Textured Stucco** is available in these 15 ceramic colors plus our **CREATIV™** custom color program.

Custom color samples can be requested at <https://ceraclad.com/creativ-custom-color>



BASIC SPECIFICATIONS	
<b>Panel Type</b>	Extruded
<b>Application Method</b>	Vertical or Horizontal
<b>Coating Options</b>	Ceramic (15 colors) Creativ™ Custom Colors
<b>Dimensions</b>	W: 18" (455 mm) L: 10' (3030 mm) T: 5/8" (16 mm)
<b>Coverage</b>	15 ft <sup>2</sup> (1.38 m <sup>2</sup> )
<b>Weight</b>	46 lb. (21 kg)
The ceramic coating is super weather resistant, low maintenance, and backed by a 20-year limited warranty.	
Please visit our website for additional <b>CERACLAD</b> product information including: <ul style="list-style-type: none"> <li>• Product samples</li> <li>• Custom color samples</li> <li>• Specifications</li> <li>• CAD details</li> <li>• Product performance and approval documents</li> <li>• MSDS</li> </ul>	



Linen | HNM34452RU

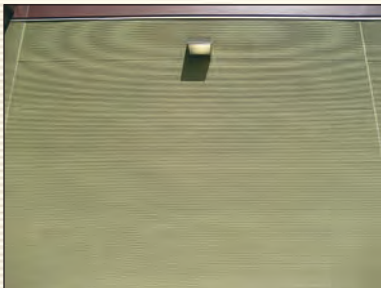
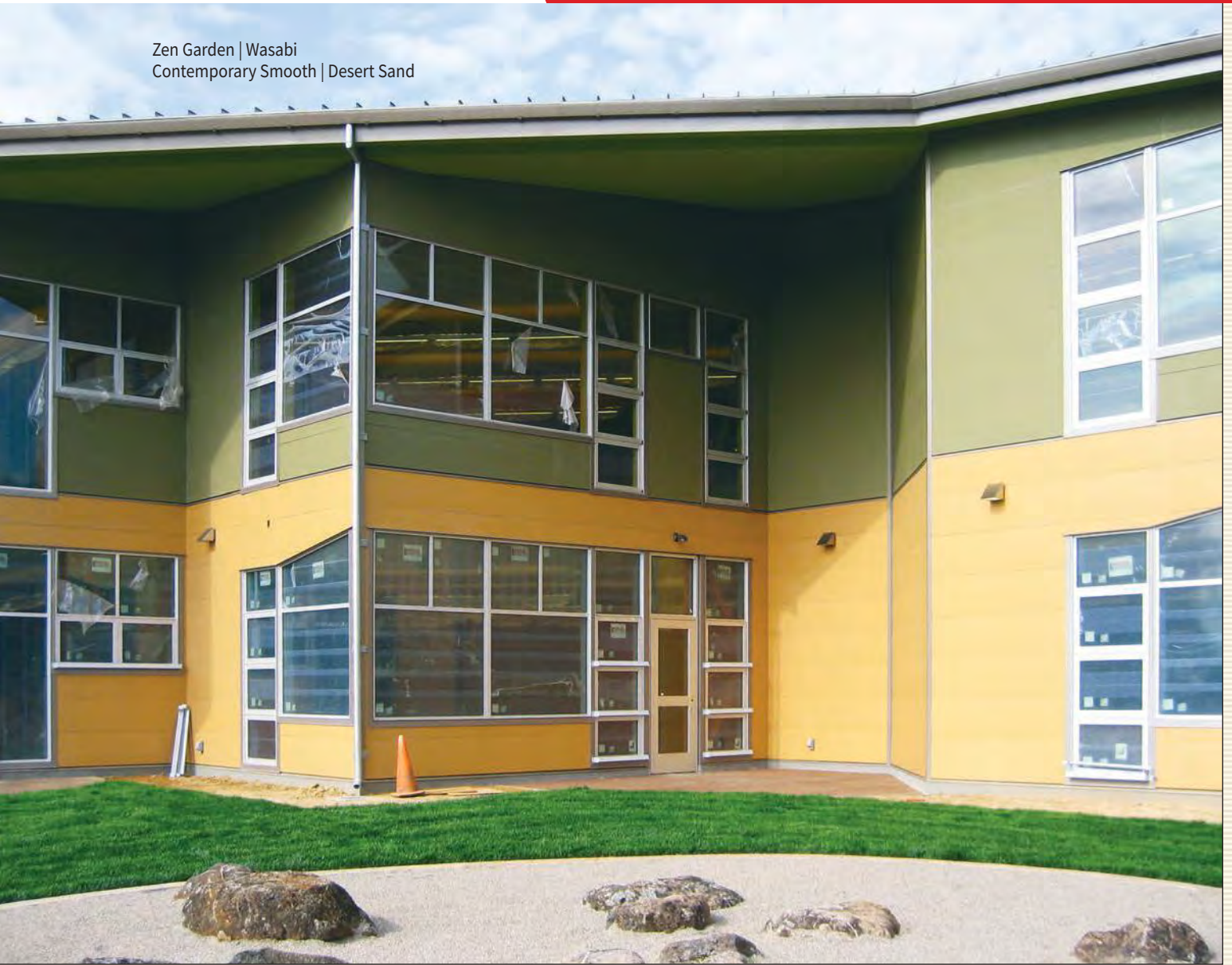
1. The product color tones on this sheet may appear slightly different from the actual products. Final color selection should be made from product samples.
2. Colors and textures are subject to change.
3. Damage caused by any product installation, repair, or replacement that is not in accordance with KMEW's technical manual, as well as damage caused by product installation on inappropriate buildings/structures, is specifically excluded from warranty coverage. Please review KMEW's technical manual and website for this product.



# CERACLAD

Rain Screen Exterior Siding System

Zen Garden | Wasabi  
Contemporary Smooth | Desert Sand

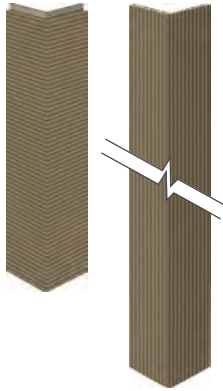




# Zen Garden

CERACLAD Zen Garden is available in these 15 ceramic colors plus our CREATIV™ custom color program.

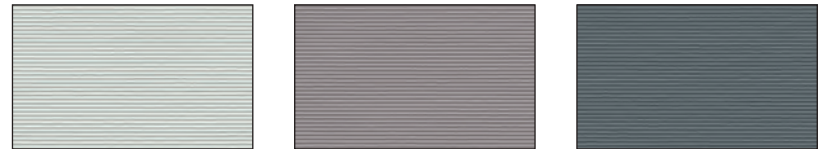
Custom color samples can be requested at <https://ceraclad.com/creativ-custom-color>



Silk  
HNM91251RU

Linen  
HNM91252RU

Wheat  
HNM91253RU



Ash  
HNM91254RU

Medium Gray  
HNM91255RU

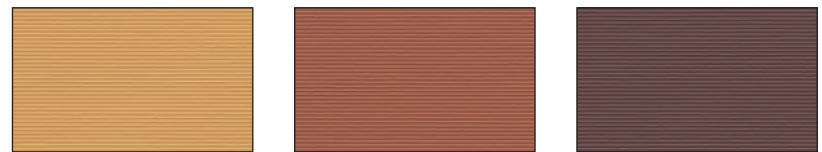
Slate  
HNM91256RU



Brass  
HNM91257RU

Euro Brown  
HNM91258RU

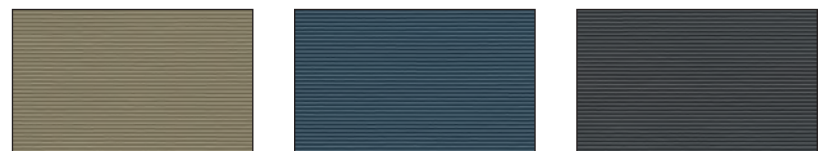
Cocoa  
HNM91259RU



Desert Sand  
HNM91260RU

Saffron  
HNM91261RU

Burgundy Brown  
HNM91262RU



Wasabi  
HNM91263RU

Midnight Blue  
HNM91264RU

Charcoal  
HNM91265RU



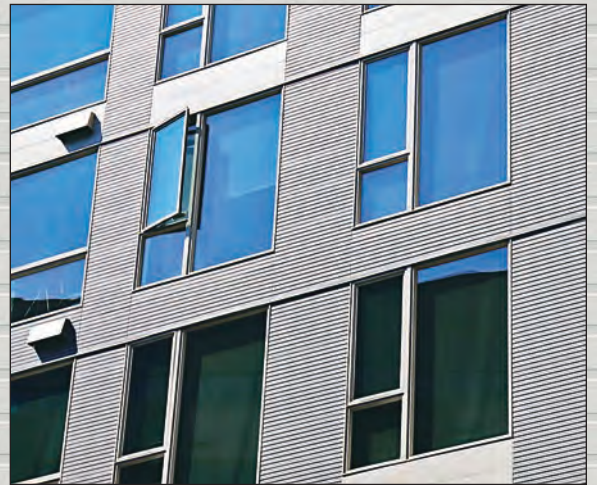
Wasabi | HNM91263RU

BASIC SPECIFICATIONS	
<b>Panel Type</b>	Extruded
<b>Application Method</b>	Vertical or Horizontal
<b>Coating Options</b>	Ceramic (15 colors) Creativ™ Custom Colors
<b>Dimensions</b>	W: 18" (455 mm) L: 10' (3030 mm) T: 5/8" (16 mm)
<b>Coverage</b>	15 ft <sup>2</sup> (1.38 m <sup>2</sup> )
<b>Weight</b>	46 lb. (21 kg)
The ceramic coating is super weather resistant, low maintenance, and backed by a 20-year limited warranty.	
Please visit our website for additional CERACLAD product information including: <ul style="list-style-type: none"> <li>• Product samples</li> <li>• Custom color samples</li> <li>• Specifications</li> <li>• CAD details</li> <li>• Product performance and approval documents</li> <li>• MSDS</li> </ul>	

1. The product color tones on this sheet may appear slightly different from the actual products. Final color selection should be made from product samples.
2. Colors and textures are subject to change.
3. Damage caused by any product installation, repair, or replacement that is not in accordance with KMEW's technical manual, as well as damage caused by product installation on inappropriate buildings/structures, is specifically excluded from warranty coverage. Please review KMEW's technical manual and website for this product.



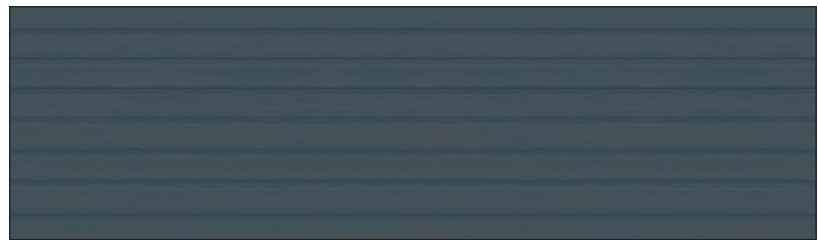
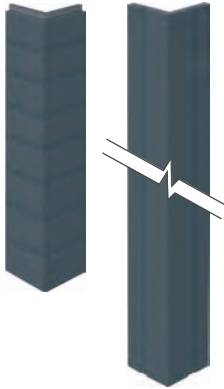
8 Reveal | Saffron  
Contemporary Smooth | Linen, Midnight Blue, Desert Sand



# 8 Reveal

**CERACLAD 8 Reveal** is available in these 15 ceramic colors plus our **CREATIV™** custom color program.

Custom color samples can be requested at <https://ceraclad.com/creativ-custom-color>



Midnight Blue | HNM91364RU

BASIC SPECIFICATIONS	
<b>Panel Type</b>	Extruded
<b>Application Method</b>	Vertical or Horizontal
<b>Coating Options</b>	Ceramic (15 colors) Creativ™ Custom Colors
<b>Dimensions</b>	W: 18" (455 mm) L: 10' (3030 mm) T: 5/8" (16 mm)
<b>Coverage</b>	15 ft <sup>2</sup> (1.38 m <sup>2</sup> )
<b>Weight</b>	46 lb. (21 kg)
The ceramic coating is super weather resistant, low maintenance, and backed by a 20-year limited warranty.	
Please visit our website for additional CERACLAD product information including: <ul style="list-style-type: none"> <li>• Product samples</li> <li>• Custom color samples</li> <li>• Specifications</li> <li>• CAD details</li> <li>• Product performance and approval documents</li> <li>• MSDS</li> </ul>	

1. The product color tones on this sheet may appear slightly different from the actual products. Final color selection should be made from product samples.
2. Colors and textures are subject to change.
3. Damage caused by any product installation, repair, or replacement that is not in accordance with KMEW's technical manual, as well as damage caused by product installation on inappropriate buildings/structures, is specifically excluded from warranty coverage. Please review KMEW's technical manual and website for this product.

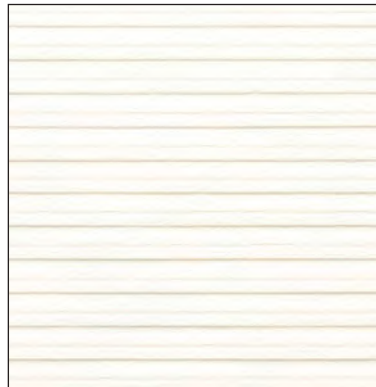
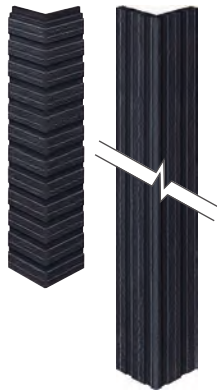


Pearl | NH3121U

# Cast Stripe

**CERACLAD Cast Stripe** is available in these 4 ceramic colors plus our **CREATIV™** custom color program.

Custom color samples can be requested at <https://ceraclad.com/creativ-custom-color>



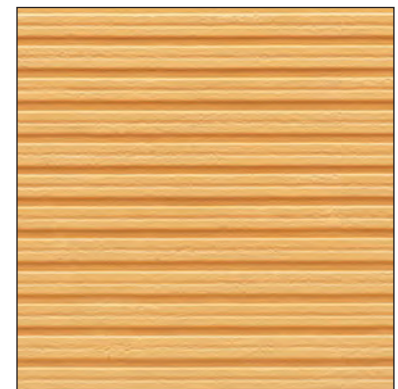
Pearl  
NH3121U



Ash  
NH31213U



Charcoal  
NH31215U



Amber  
NH31216U

BASIC SPECIFICATIONS	
<b>Panel Type</b>	Extruded
<b>Application Method</b>	Vertical or Horizontal
<b>Coating Options</b>	Ceramic (4 colors) Creativ™ Custom Colors
<b>Dimensions</b>	W: 18" (455 mm) L: 10' (3030 mm) T: 5/8" (16 mm)
<b>Coverage</b>	15 ft <sup>2</sup> (1.38 m <sup>2</sup> )
<b>Weight</b>	44 lb. (21 kg)
The ceramic coating is super weather resistant, low maintenance, and backed by a 20-year limited warranty.	
Please visit our website for additional <b>CERACLAD</b> product information including: <ul style="list-style-type: none"> <li>• Product samples</li> <li>• Custom color samples</li> <li>• Specifications</li> <li>• CAD details</li> <li>• Product performance and approval documents</li> <li>• MSDS</li> </ul>	



Charcoal | NH31215U

1. The product color tones on this sheet may appear slightly different from the actual products. Final color selection should be made from product samples.
2. Colors and textures are subject to change.
3. Damage caused by any product installation, repair, or replacement that is not in accordance with KMEW's technical manual, as well as damage caused by product installation on inappropriate buildings/structures, is specifically excluded from warranty coverage. Please review KMEW's technical manual and website for this product.



# CERACLAD

Rain Screen Exterior Siding System

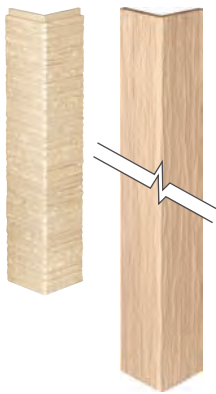
Silky Flow | Pearl  
Zen Garden | Charcoal



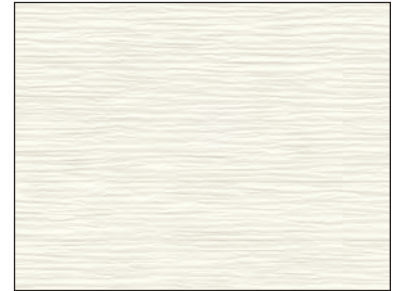
Wheat | NH3753A

# Silky Flow

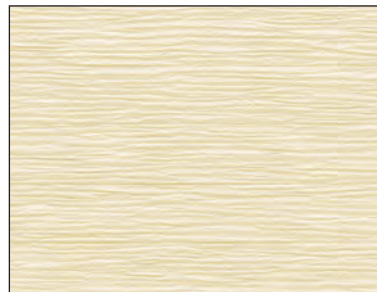
**CERACLAD Silky Flow** is available in these 6 ceramic colors.



Pearl  
NH3751A



Cream  
NH3752A



Wheat  
NH3753A



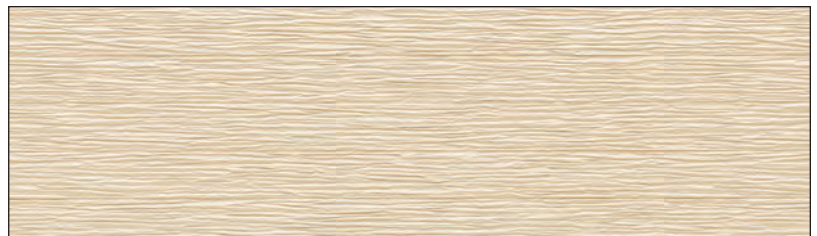
Charcoal  
NH3756A



French Beige  
NH3757A



Euro Brown  
NH3758A



French Beige | NH3757A

BASIC SPECIFICATIONS	
<b>Panel Type</b>	Extruded
<b>Application Method</b>	Vertical or Horizontal
<b>Coating Options</b>	Ceramic (6 colors)
<b>Dimensions</b>	W: 18" (455 mm) L: 10' (3030 mm) T: 5/8" (16 mm)
<b>Coverage</b>	15 ft <sup>2</sup> (1.38 m <sup>2</sup> )
<b>Weight</b>	46 lb. (21 kg)
The ceramic coating is super weather resistant, low maintenance, and backed by a 20-year limited warranty.	
Please visit our website for additional <b>CERACLAD</b> product information including: <ul style="list-style-type: none"> <li>• Product samples</li> <li>• Custom color samples</li> <li>• Specifications</li> <li>• CAD details</li> <li>• Product performance and approval documents</li> <li>• MSDS</li> </ul>	

1. The product color tones on this sheet may appear slightly different from the actual products. Final color selection should be made from product samples.
2. Colors and textures are subject to change.
3. Damage caused by any product installation, repair, or replacement that is not in accordance with KMEW's technical manual, as well as damage caused by product installation on inappropriate buildings/structures, is specifically excluded from warranty coverage. Please review KMEW's technical manual and website for this product.





# Rustic Wood

**CERACLAD Rustic Wood** is available in these 3 ceramic colors.



Almond  
NH4059U



Coastal Gray  
NH4052U



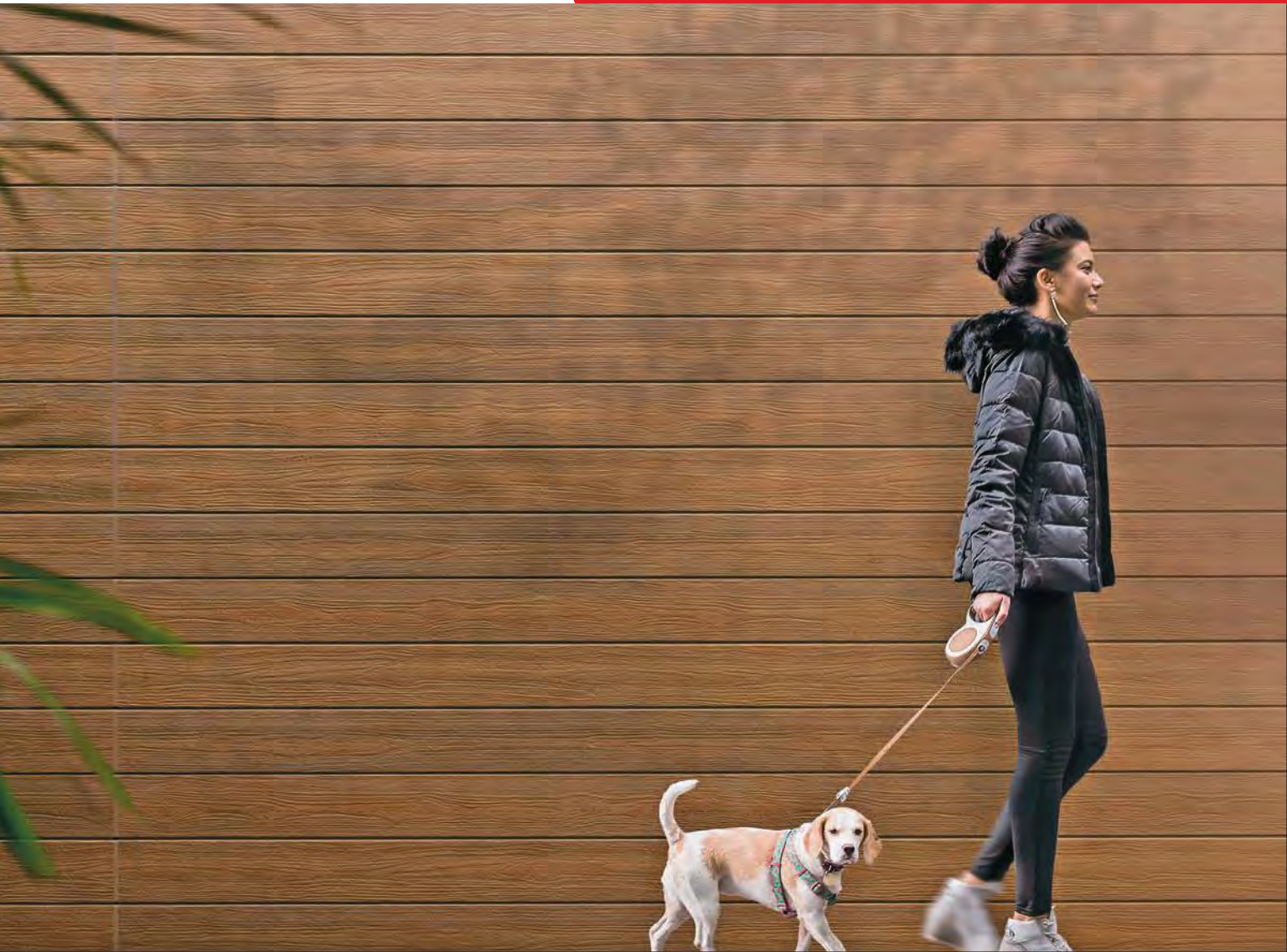
Coffee  
NH4058U



Coffee | NH4058U

BASIC SPECIFICATIONS	
<b>Panel Type</b>	Extruded
<b>Application Method</b>	Vertical or Horizontal
<b>Coating Options</b>	Ceramic (3 colors)
<b>Dimensions</b>	W: 18" (455 mm) L: 10' (3030 mm) T: 5/8" (16 mm)
<b>Coverage</b>	15 ft <sup>2</sup> (1.38 m <sup>2</sup> )
<b>Weight</b>	46 lb. (21 kg)
The ceramic coating is super weather resistant, low maintenance, and backed by a 20-year limited warranty.	
Please visit our website for additional <b>CERACLAD</b> product information including: <ul style="list-style-type: none"> <li>• Product samples</li> <li>• Custom color samples</li> <li>• Specifications</li> <li>• CAD details</li> <li>• Product performance and approval documents</li> <li>• MSDS</li> </ul>	

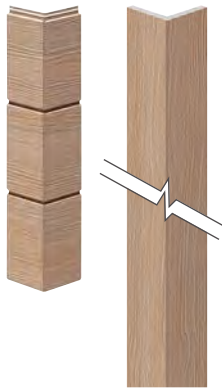
1. The product color tones on this sheet may appear slightly different from the actual products. Final color selection should be made from product samples.
2. Colors and textures are subject to change.
3. Damage caused by any product installation, repair, or replacement that is not in accordance with KMEW's technical manual, as well as damage caused by product installation on inappropriate buildings/structures, is specifically excluded from warranty coverage. Please review KMEW's technical manual and website for this product.





# Urban Cedar

**CERACLAD Urban Cedar** is available in these 4 ceramic colors.



Honey  
NH4992U



Cappuccino  
NH4991U

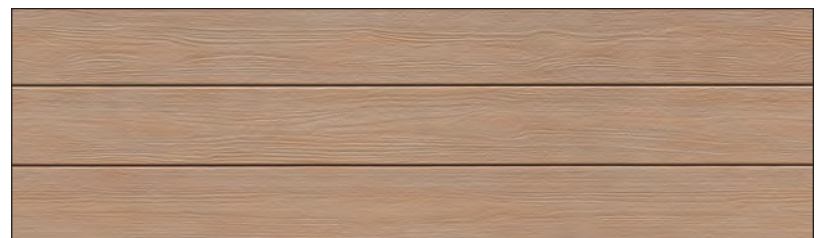


Espresso  
NH4994U



Golden Brown  
NH4993U

BASIC SPECIFICATIONS	
<b>Panel Type</b>	Extruded
<b>Application Method</b>	Vertical or Horizontal
<b>Coating Options</b>	Ceramic (4 colors)
<b>Dimensions</b>	W: 18" (455 mm) L: 10' (3030 mm) T: 5/8" (16 mm)
<b>Coverage</b>	15 ft <sup>2</sup> (1.38 m <sup>2</sup> )
<b>Weight</b>	46 lb. (21 kg)
The ceramic coating is super weather resistant, low maintenance, and backed by a 20-year limited warranty.	
Please visit our website for additional <b>CERACLAD</b> product information including: <ul style="list-style-type: none"> <li>• Product samples</li> <li>• Custom color samples</li> <li>• Specifications</li> <li>• CAD details</li> <li>• Product performance and approval documents</li> <li>• MSDS</li> </ul>	



Cappuccino | NH4991U

1. The product color tones on this sheet may appear slightly different from the actual products. Final color selection should be made from product samples.
2. Colors and textures are subject to change.
3. Damage caused by any product installation, repair, or replacement that is not in accordance with KMEW's technical manual, as well as damage caused by product installation on inappropriate buildings/structures, is specifically excluded from warranty coverage. Please review KMEW's technical manual and website for this product.



Board Formed Concrete | Warm Gray



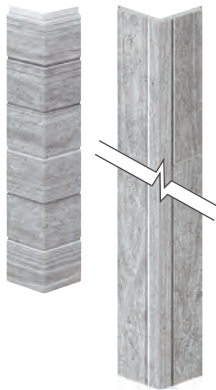
Concrete Gray | NH7041A

# Board Formed Concrete

**CERACLAD** Board Formed Concrete is available in these 3 ceramic colors.



Close-up of texture



Concrete Gray  
NH7041A



Warm Gray  
NH7042A



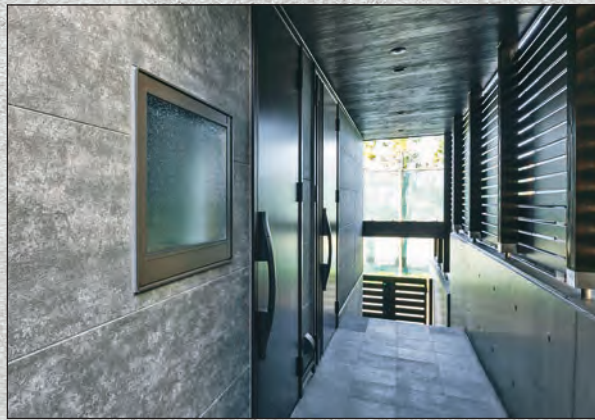
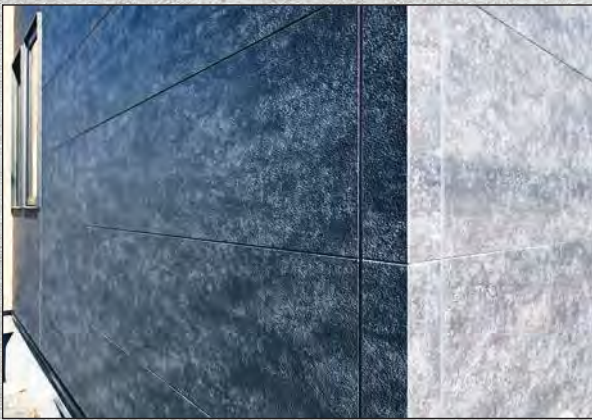
Fog Gray  
NH7043A



Concrete Gray | NH7041A

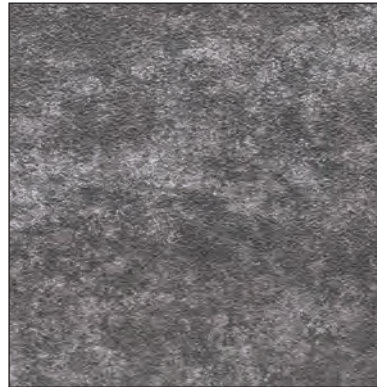
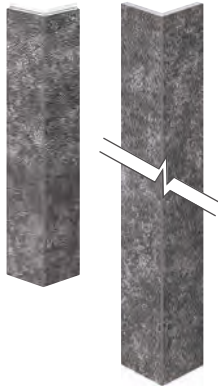
BASIC SPECIFICATIONS	
<b>Panel Type</b>	Extruded
<b>Application Method</b>	Vertical or Horizontal
<b>Coating Options</b>	Ceramic (3 colors)
<b>Dimensions</b>	W: 18" (455 mm) L: 10' (3030 mm) T: 5/8" (16 mm)
<b>Coverage</b>	15 ft <sup>2</sup> (1.38 m <sup>2</sup> )
<b>Weight</b>	51 lb. (23 kg)
The ceramic coating is super weather resistant, low maintenance, and backed by a 20-year limited warranty.	
Please visit our website for additional <b>CERACLAD</b> product information including: <ul style="list-style-type: none"> <li>• Product samples</li> <li>• Custom color samples</li> <li>• Specifications</li> <li>• CAD details</li> <li>• Product performance and approval documents</li> <li>• MSDS</li> </ul>	

1. The product color tones on this sheet may appear slightly different from the actual products. Final color selection should be made from product samples.
2. Colors and textures are subject to change.
3. Damage caused by any product installation, repair, or replacement that is not in accordance with KMEW's technical manual, as well as damage caused by product installation on inappropriate buildings/structures, is specifically excluded from warranty coverage. Please review KMEW's technical manual and website for this product.



# Elements

**CERACLAD Elements** is available in these 4 ceramic colors.



Blacken Steel  
NH4976A



Dark Marble  
NH4975A



Ashlar Slate  
NH4971A



Travertine  
NH4972A

BASIC SPECIFICATIONS	
<b>Panel Type</b>	Extruded
<b>Application Method</b>	Vertical or Horizontal
<b>Coating Options</b>	Ceramic (4 colors)
<b>Dimensions</b>	W: 18" (455 mm) L: 10' (3030 mm) T: 5/8" (16 mm)
<b>Coverage</b>	15 ft <sup>2</sup> (1.38 m <sup>2</sup> )
<b>Weight</b>	46 lb. (21 kg)
The ceramic coating is super weather resistant, low maintenance, and backed by a 20-year limited warranty.	
Please visit our website for additional <b>CERACLAD</b> product information including: <ul style="list-style-type: none"> <li>• Product samples</li> <li>• Custom color samples</li> <li>• Specifications</li> <li>• CAD details</li> <li>• Product performance and approval documents</li> <li>• MSDS</li> </ul>	



Blacken Steel | NH4976A

1. The product color tones on this sheet may appear slightly different from the actual products. Final color selection should be made from product samples.
2. Colors and textures are subject to change.
3. Damage caused by any product installation, repair, or replacement that is not in accordance with KMEW's technical manual, as well as damage caused by product installation on inappropriate buildings/structures, is specifically excluded from warranty coverage. Please review KMEW's technical manual and website for this product.







CERACLAD Holme is available in these 3 ceramic colors.



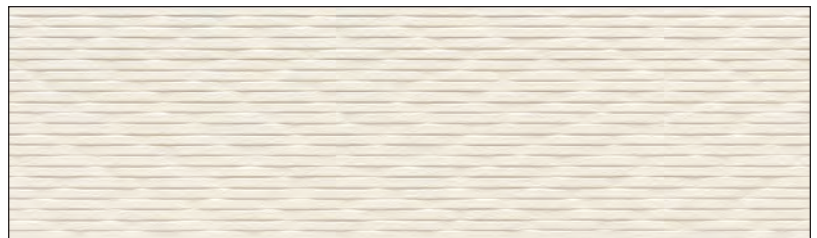
Snow  
NH4331U



Maroon  
NH4333U



Onyx  
NH4334U



Snow | NH4331U

BASIC SPECIFICATIONS	
Panel Type	Extruded
Application Method	Horizontal
Coating Options	Ceramic (3 colors)
Dimensions	W: 18" (455 mm) L: 10' (3030 mm) T: 5/8" (16 mm)
Coverage	15 ft <sup>2</sup> (1.38 m <sup>2</sup> )
Weight	49 lb. (22 kg)
The ceramic coating is super weather resistant, low maintenance, and backed by a 20-year limited warranty.	
Please visit our website for additional CERACLAD product information including: <ul style="list-style-type: none"> <li>• Product samples</li> <li>• Custom color samples</li> <li>• Specifications</li> <li>• CAD details</li> <li>• Product performance and approval documents</li> <li>• MSDS</li> </ul>	

1. The product color tones on this sheet may appear slightly different from the actual products. Final color selection should be made from product samples.
2. Colors and textures are subject to change.
3. Damage caused by any product installation, repair, or replacement that is not in accordance with KMEW's technical manual, as well as damage caused by product installation on inappropriate buildings/structures, is specifically excluded from warranty coverage. Please review KMEW's technical manual and website for this product.



# Ridged Concrete



White | AH 5391U

**CERA CLAD** Ridged Concrete is available in these 3 ceramic colors.



White  
AH5391U



Charcoal  
AH5393U



Light Gray  
AH5394U



#### BASIC SPECIFICATIONS

<b>Panel Type</b>	Extruded
<b>Application Method</b>	Horizontal
<b>Coating Options</b>	Ceramic (3 colors)
<b>Dimensions</b>	W: 18" (455 mm) L: 10' (3030 mm) T: 7/8" (21 mm)
<b>Coverage</b>	15 ft <sup>2</sup> (1.38 m <sup>2</sup> )
<b>Weight</b>	57 lb. (26 kg)

The ceramic coating is super weather resistant, low maintenance, and backed by a 20-year limited warranty.

Please visit our website for additional **CERA CLAD** product information including:

- Product samples
- Custom color samples
- Specifications
- CAD details
- Product performance and approval documents
- MSDS

1. The product color tones on this sheet may appear slightly different from the actual products. Final color selection should be made from product samples.

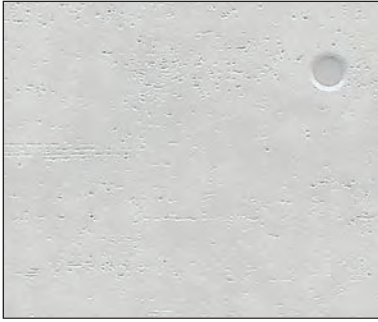
2. Colors and textures are subject to change.

3. Damage caused by any product installation, repair, or replacement that is not in accordance with KMEW's technical manual, as well as damage caused by product installation on inappropriate buildings/structures, is specifically excluded from warranty coverage. Please review KMEW's technical manual and website for this product.

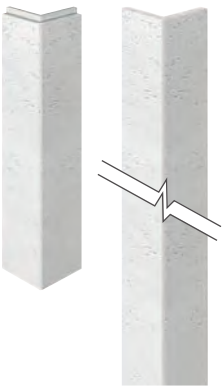


# Bare Concrete Acrylic Finish

**CERACLAD Bare Concrete** is available in 1 ceramic color.



Concrete Gray  
EW3571H



BASIC SPECIFICATIONS	
<b>Panel Type</b>	Extruded
<b>Application Method</b>	Vertical or Horizontal
<b>Coating Options</b>	Acrylic Finish
<b>Dimensions</b>	W: 18" (455 mm) L: 10' (3030 mm) T: 3/4" (19 mm)
<b>Coverage</b>	15 ft <sup>2</sup> (1.38 m <sup>2</sup> )
<b>Weight</b>	55 lb. (25 kg)
Please visit our website for additional <b>CERACLAD</b> product information including: <ul style="list-style-type: none"> <li>• Product samples</li> <li>• Custom color samples</li> <li>• Specifications</li> <li>• CAD details</li> <li>• Product performance and approval documents</li> <li>• MSDS</li> </ul>	



Concrete Gray | EW3571H

1. The product color tones on this sheet may appear slightly different from the actual products. Final color selection should be made from product samples.
2. Colors and textures are subject to change.
3. Damage caused by any product installation, repair, or replacement that is not in accordance with KMEW's technical manual, as well as damage caused by product installation on inappropriate buildings/structures, is specifically excluded from warranty coverage. Please review KMEW's technical manual and website for this product.
4. Please note that Bare Concrete uses filtrated panels and cannot be used in areas where freeze/thaw weathering occurs more than 80 days per year.



# Antique Sawn



Ash | NH4755A

**CERA CLAD** Antique Sawn is available in these 4 ceramic colors.



Dark Red  
NH4751A



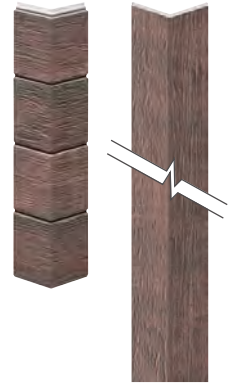
Amber  
NH4756A



Ash  
NH4755A



Brown  
NH4752A



#### BASIC SPECIFICATIONS

<b>Panel Type</b>	Extruded
<b>Application Method</b>	Vertical or Horizontal
<b>Coating Options</b>	Ceramic (4 colors)
<b>Dimensions</b>	W: 18" (455 mm) L: 10' (3030 mm) T: 5/8" (16 mm)
<b>Coverage</b>	15 ft <sup>2</sup> (1.38 m <sup>2</sup> )
<b>Weight</b>	44 lb. (20 kg)

The ceramic coating is super weather resistant, low maintenance, and backed by a 20-year limited warranty.

Please visit our website for additional **CERA CLAD** product information including:

- Product samples
- Custom color samples
- Specifications
- CAD details
- Product performance and approval documents
- MSDS

1. The product color tones on this sheet may appear slightly different from the actual products. Final color selection should be made from product samples.
2. Colors and textures are subject to change.
3. Damage caused by any product installation, repair, or replacement that is not in accordance with KMEW's technical manual, as well as damage caused by product installation on inappropriate buildings/structures, is specifically excluded from warranty coverage. Please review KMEW's technical manual and website for this product.



# Wood Stack

**CERACLAD Wood Stack** is available in these 3 ceramic colors.



Charcoal  
NH5274U



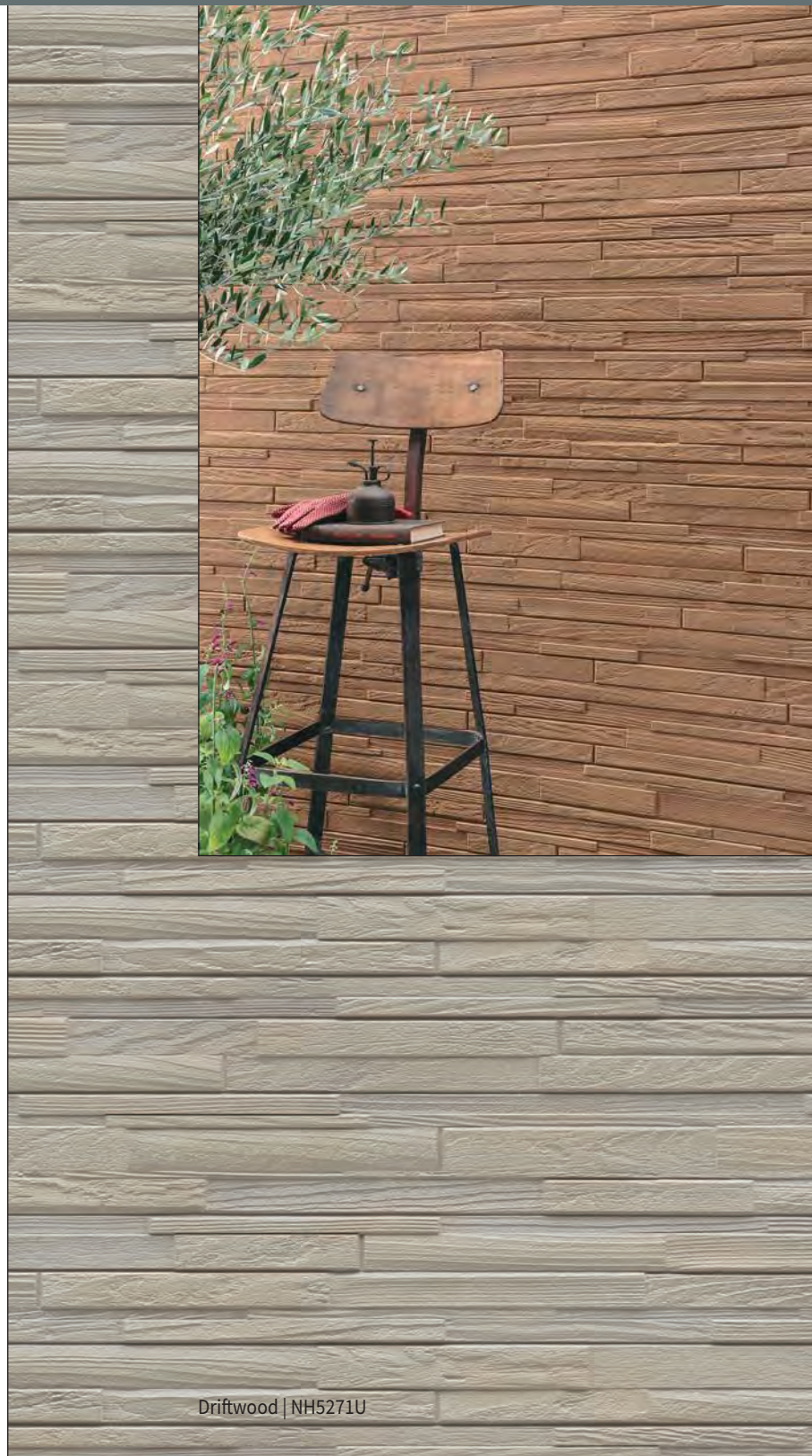
Firewood  
NH5273U



Driftwood  
NH5271U



BASIC SPECIFICATIONS	
<b>Panel Type</b>	Extruded
<b>Application Method</b>	Horizontal
<b>Coating Options</b>	Ceramic (3 colors)
<b>Dimensions</b>	W: 18" (455 mm) L: 10' (3030 mm) T: 5/7" (18 mm)
<b>Coverage</b>	15 ft <sup>2</sup> (1.38 m <sup>2</sup> )
<b>Weight</b>	51 lb. (23 kg)
The ceramic coating is super weather resistant, low maintenance, and backed by a 20-year limited warranty.	
Please visit our website for additional <b>CERACLAD</b> product information including: <ul style="list-style-type: none"> <li>• Product samples</li> <li>• Custom color samples</li> <li>• Specifications</li> <li>• CAD details</li> <li>• Product performance and approval documents</li> <li>• MSDS</li> </ul>	



Driftwood | NH5271U

1. The product color tones on this sheet may appear slightly different from the actual products. Final color selection should be made from product samples.
2. Colors and textures are subject to change.
3. Damage caused by any product installation, repair, or replacement that is not in accordance with KMEW's technical manual, as well as damage caused by product installation on inappropriate buildings/structures, is specifically excluded from warranty coverage. Please review KMEW's technical manual and website for this product.

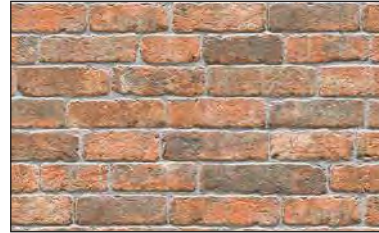


Vintage White | NH4741A

**CERA CLAD** Chateau Brick is available in these 3 ceramic colors.



Vintage White  
NH4741A



Vintage Red  
NH4743A



Vintage Brown  
NH4744A



#### BASIC SPECIFICATIONS

<b>Panel Type</b>	Extruded
<b>Application Method</b>	Horizontal
<b>Coating Options</b>	Ceramic (3 colors)
<b>Dimensions</b>	W: 18" (455 mm) L: 10' (3030 mm) T: 5/8" (16 mm)
<b>Coverage</b>	15 ft <sup>2</sup> (1.38 m <sup>2</sup> )
<b>Weight</b>	44 lb. (26 kg)

The ceramic coating is super weather resistant, low maintenance, and backed by a 20-year limited warranty.

Please visit our website for additional **CERA CLAD** product information including:

- Product samples
- Custom color samples
- Specifications
- CAD details
- Product performance and approval documents
- MSDS

1. The product color tones on this sheet may appear slightly different from the actual products. Final color selection should be made from product samples.
2. Colors and textures are subject to change.
3. Damage caused by any product installation, repair, or replacement that is not in accordance with KMEW's technical manual, as well as damage caused by product installation on inappropriate buildings/structures, is specifically excluded from warranty coverage. Please review KMEW's technical manual and website for this product.



# New Products

**CERACLAD** Antique Brick is available in these 3 ceramic colors.



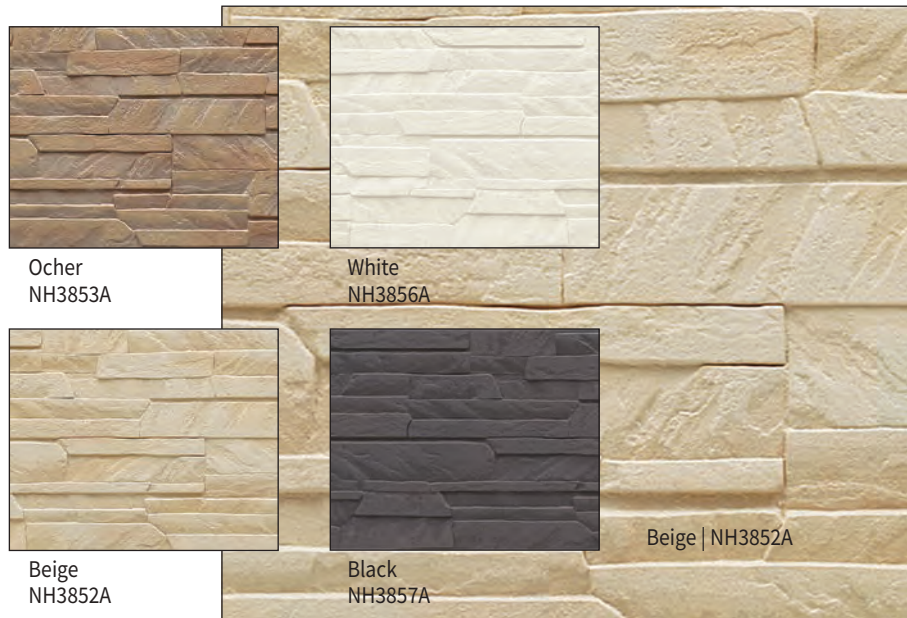
## Antique Brick



**CERACLAD** Strata Stone is available in these 4 ceramic colors.



## Strata Stone

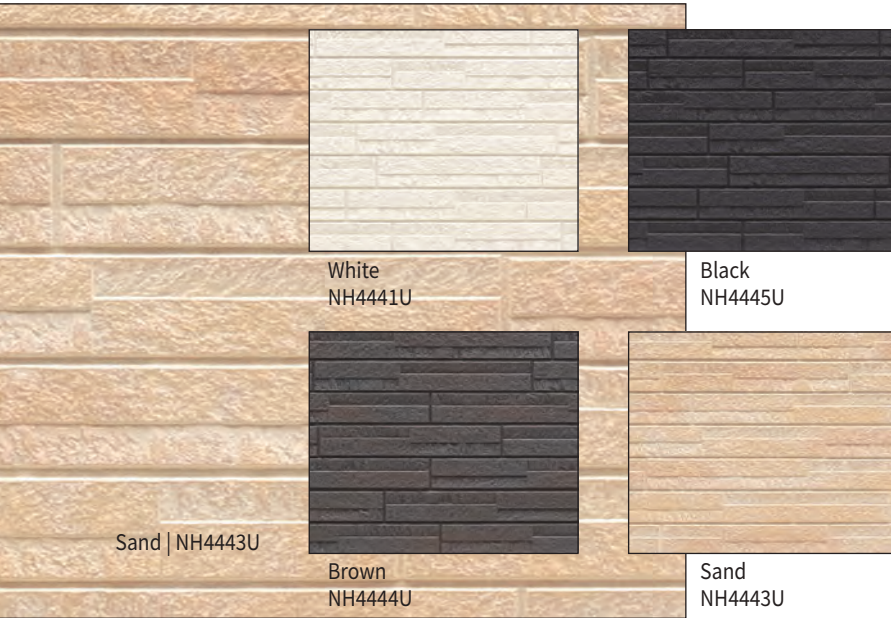


BASIC SPECIFICATIONS	
<b>Panel Type</b>	Extruded
<b>Application Method</b>	Horizontal
<b>Coating Options</b>	Ceramic
<b>Dimensions</b>	W: 18" (455 mm) L: 10' (3030 mm) T: 5/8" (16 mm)
<b>Coverage</b>	15 ft <sup>2</sup> (1.38 m <sup>2</sup> )
<b>Weight</b>	44 lb. (20 kg)
The ceramic coating is super weather resistant, low maintenance, and backed by a 20-year limited warranty.	
Please visit our website for additional <b>CERACLAD</b> product information including: <ul style="list-style-type: none"> <li>• Product samples</li> <li>• Custom color samples</li> <li>• Specifications</li> <li>• CAD details</li> <li>• Product performance and approval documents</li> <li>• MSDS</li> </ul>	

1. The product color tones on this sheet may appear slightly different from the actual products. Final color selection should be made from product samples.
2. Colors and textures are subject to change.
3. Damage caused by any product installation, repair, or replacement that is not in accordance with KMEW's technical manual, as well as damage caused by product installation on inappropriate buildings/structures, is specifically excluded from warranty coverage. Please review KMEW's technical manual and website for this product.

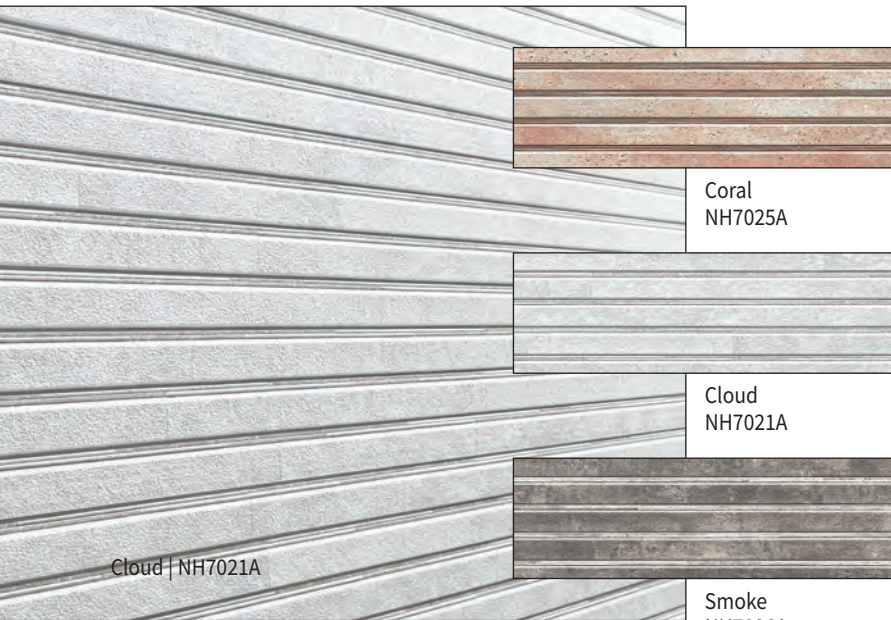
## Ledge Stone

**CERACLAD Ledge Stone** is available in these 4 ceramic colors.



## Earth Bands

**CERACLAD Earth Bands** is available in these 3 ceramic colors.



BASIC SPECIFICATIONS	
<b>Panel Type</b>	Extruded
<b>Application Method</b>	Horizontal
<b>Coating Options</b>	Ceramic
<b>Dimensions</b>	W: 18" (455 mm) L: 10' (3030 mm) T: 5/8" (16 mm)
<b>Coverage</b>	15 ft <sup>2</sup> (1.38 m <sup>2</sup> )
<b>Weight</b>	46 lb. (21 kg)
The ceramic coating is super weather resistant, low maintenance, and backed by a 20-year limited warranty.	
Please visit our website for additional <b>CERACLAD</b> product information including: <ul style="list-style-type: none"> <li>• Product samples</li> <li>• Custom color samples</li> <li>• Specifications</li> <li>• CAD details</li> <li>• Product performance and approval documents</li> <li>• MSDS</li> </ul>	

1. The product color tones on this sheet may appear slightly different from the actual products. Final color selection should be made from product samples.
2. Colors and textures are subject to change.
3. Damage caused by any product installation, repair, or replacement that is not in accordance with KMEW's technical manual, as well as damage caused by product installation on inappropriate buildings/structures, is specifically excluded from warranty coverage. Please review KMEW's technical manual and website for this product.



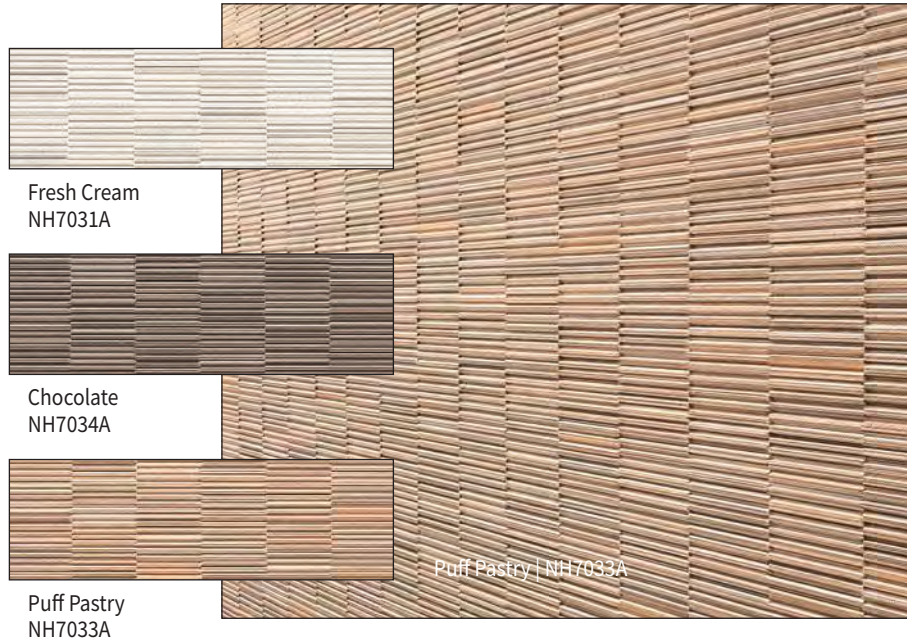


# New Products

**CERACLAD Mille Feuille** is available in these 3 ceramic colors.



## Mille Feuille



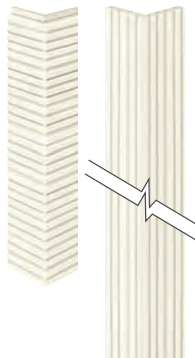
Fresh Cream  
NH7031A

Chocolate  
NH7034A

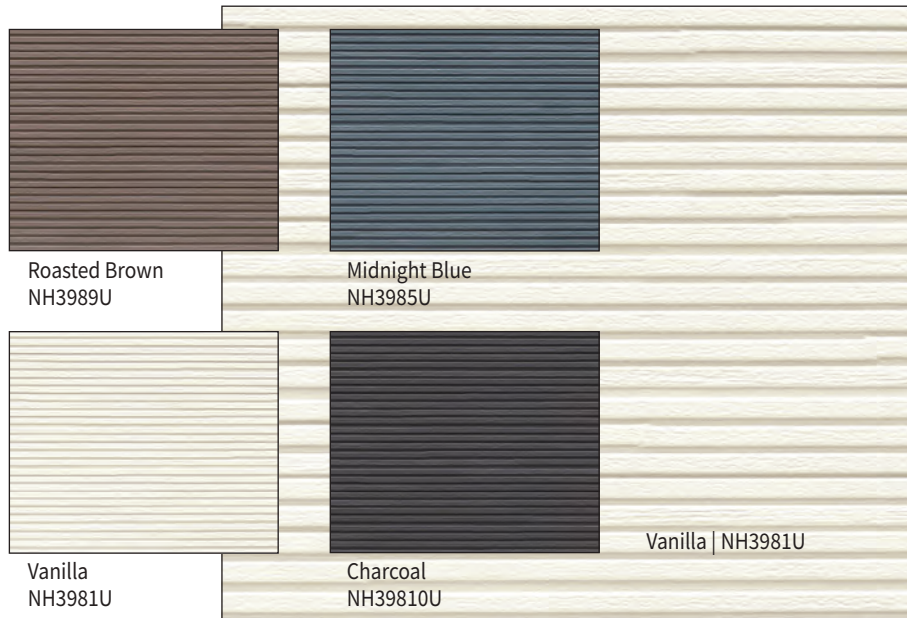
Puff Pastry  
NH7033A

Puff Pastry | NH7033A

**CERACLAD Modern Stripe** is available in these 4 ceramic colors.



## Modern Stripe



Roasted Brown  
NH3989U

Midnight Blue  
NH3985U

Vanilla  
NH3981U

Charcoal  
NH39810U

Vanilla | NH3981U

BASIC SPECIFICATIONS	
<b>Panel Type</b>	Extruded
<b>Application Method</b> Mille Feuille Modern Stripe	Horizontal Vertical or Horizontal
<b>Coating Options</b>	Ceramic
<b>Dimensions</b>	W: 18" (455 mm) L: 10' (3030 mm) T: 5/8" (16 mm)
<b>Coverage</b>	15 ft <sup>2</sup> (1.38 m <sup>2</sup> )
<b>Weight</b> Mille Feuille Modern Stripe	46 lb. (21 kg) 49 lb. (22 kg)
The ceramic coating is super weather resistant, low maintenance, and backed by a 20-year limited warranty.	
Please visit our website for additional <b>CERACLAD</b> product information including: <ul style="list-style-type: none"> <li>• Product samples</li> <li>• Custom color samples</li> <li>• Specifications</li> <li>• CAD details</li> <li>• Product performance and approval documents</li> <li>• MSDS</li> </ul>	

1. The product color tones on this sheet may appear slightly different from the actual products. Final color selection should be made from product samples.
2. Colors and textures are subject to change.
3. Damage caused by any product installation, repair, or replacement that is not in accordance with KMEW's technical manual, as well as damage caused by product installation on inappropriate buildings/structures, is specifically excluded from warranty coverage. Please review KMEW's technical manual and website for this product.



# Naturally beautiful, simply sustainable.

CERACLAD SOLIDO interior panels are uncoated, cement-based panels. Made with recycled coffee cups and used coffee beans, they create a beautiful and naturally uneven color pattern.



CERACLAD SOLIDO panels are made with 60% recycled materials, including fiber from paper cups and coffee beans, fly ash, and cement from recycled panels. The varied surface patterns create warm and natural interiors.

Like all other CERACLAD panels, SOLIDO can be cut on-site with common tools, and installed easily using our patented hidden fastener system.

Please note that our SOLIDO interior panels come with a different warranty than our exterior panels. Visit our website for more information.



Fire Rated



Interior

Fire Rating	Class A
Panel Type	Filtrated

BASIC SPECIFICATIONS	
Panel Type	Filtrated
Application Method	Vertical or Horizontal
Coating Options	Uncoated
Dimensions	W: 18" (455 mm) L: 10' (3030 mm) T: 5/8" (16 mm)
Coverage	15 ft <sup>2</sup> (1.38 m <sup>2</sup> )
Weight	62 lb. (28 kg)
Please visit our website for additional CERACLAD product information including:	
<ul style="list-style-type: none"> <li>• Product samples</li> <li>• Custom color samples</li> <li>• Specifications</li> <li>• CAD details</li> <li>• Product performance and approval documents</li> <li>• MSDS</li> </ul>	



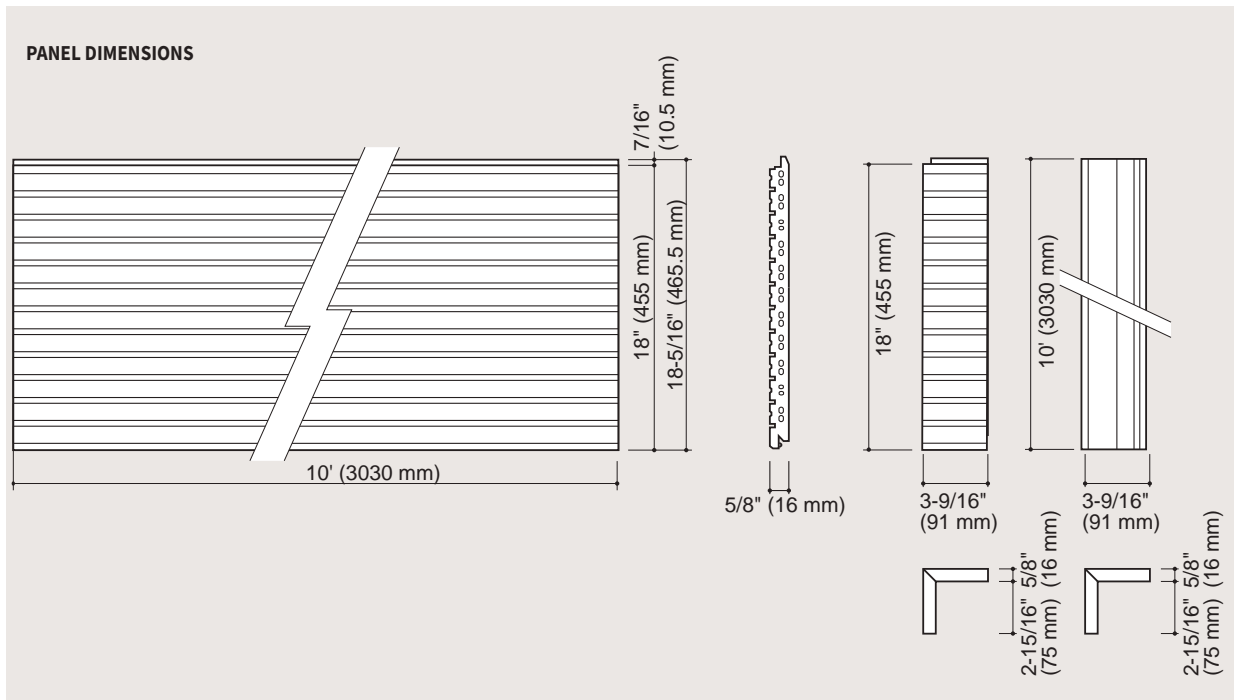
EA6511K











1. The product color tones on this sheet may appear slightly different from the actual products. Final color selection should be made from product samples.  
2. SOLIDO panels are not covered by our standard warranty. Please visit our website for the SOLIDO warranty.

# THE CERACLAD SYSTEM

## INSTALLATION

**CERACLAD** delivers the complete installation package to your jobsite including panels, accessories and hardware. All products are individually packed and marked for your convenience. **CERACLAD** helps you to deliver fast, high quality rainscreen installations on every project – every time.



Installation Accessories				
Panel Clip	Corner Clip	Starter Bar	Caulking Joiner	Face Nail
				
Face Screw	Wood/Steel Screw	Touch-up Paint	Spacer Block	Repair Putty
				

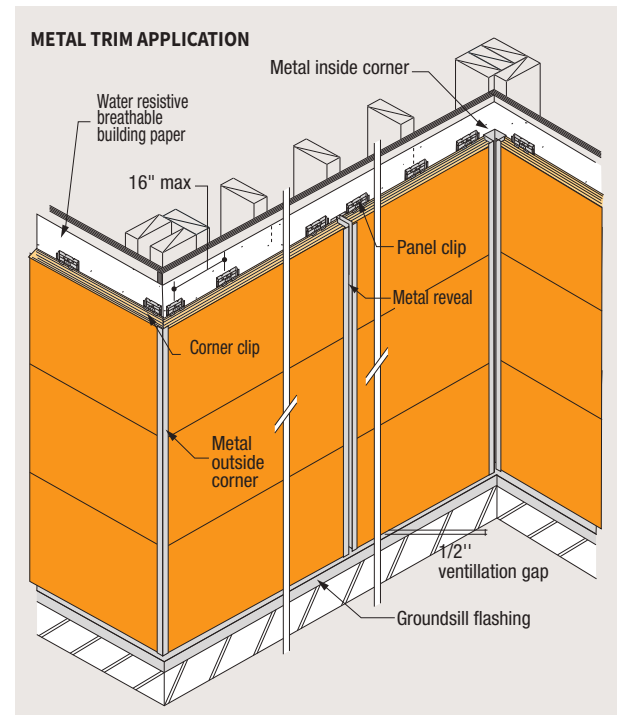
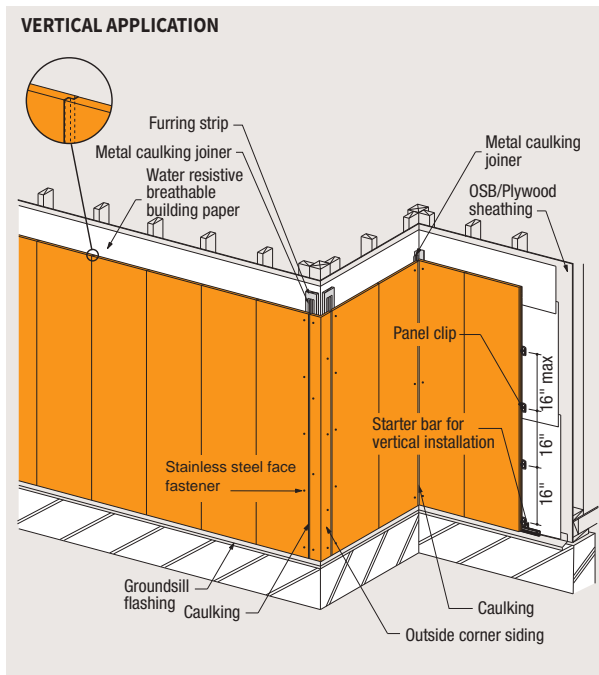
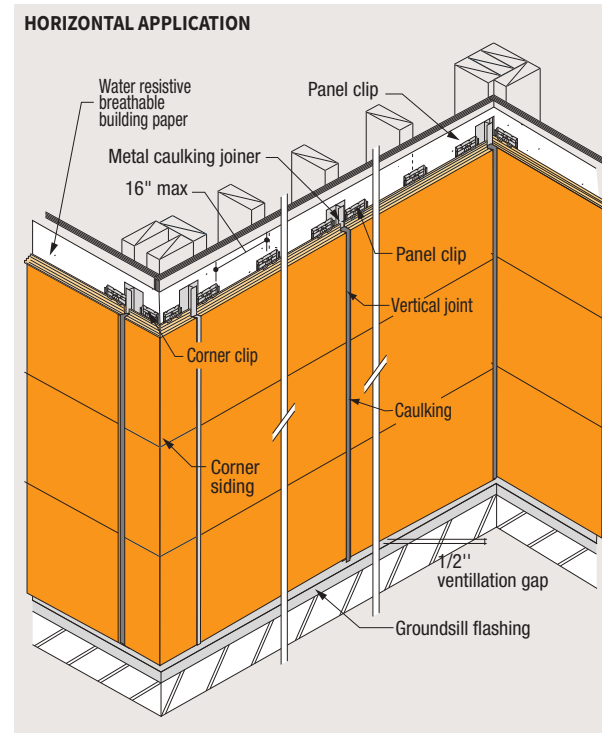
## THE CERACLAD SYSTEM

### PANEL ORIENTATION

All **CERACLAD** siding panels are designed to allow both horizontal and vertical application, providing greater design flexibility for architects. Installers will find that the innovative panel clip system makes installation easy and straightforward no matter which application is chosen.

In order to create an effective rainscreen system, a fully ventilated cladding with openings to the exterior, both at the top and bottom of the wall, is critical. Simply providing an air space behind the cladding is not enough. In addition, testing has shown that in order to maximize air flow, each story should have a separate air cavity.

Metal reveal joints may be used in lieu of a caulking joint.

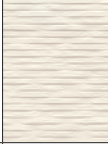









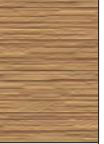




## PANEL CHARACTERISTICS

Design	Textures		Contemporary Smooth	Textured Stucco	Zen Garden	8 Reveal	Cast Stripe	Silky Flow	Rustic Wood	Board Formed Concrete	Elements	Urban Cedar	Bare Concrete	
	Colors	Ceramic	Proprietary 15 colors	Proprietary 15 colors	Proprietary 15 colors	Proprietary 15 colors	Proprietary 4 colors	Proprietary 6 colors	Proprietary 3 colors	Proprietary 3 colors	Proprietary 4 colors	Proprietary 4 colors	Acrylic 1 color	
Creativ		Unlimited Custom Colors						N/A						
Base Material	Panel Type		Filtrated	Extruded								Filtrated		
	Dimension		W: 18"×L: 10'×T: 5/8"										T: 3/4"	
	Weight		60 lb.	46 lb.	46 lb.	46 lb.	44 lb.	46 lb.	46 lb.	51 lb.	46 lb.	46 lb.	55 lb.	
	Fire Resistance		Non-combustible, Class A rated											
	Assembly Wind Resistance		Please refer to the Fire and Wind Certification Data at the end of the Technical Resources section.											
	Recycled Material Content		Approximately 45%											
	Dimensional Stability		The maximum dimensional change per year is approximately 0.05%											
	Freeze/thaw Resistance		Limited*	Yes									Limited*	
	Impact Resistance		Yes											
	Warranty		50 Year Limited Warranty											
Coating	Finish		Factory finished										Acrylic finish	
	Protective Top Coat	Ceramic	Ceramic coating in proprietary colors											
		Creativ	UV resistant coating in custom colors						N/A					
	Graffiti Resistant	Ceramic	Yes**										N/A	
		Creativ	N/A											
	Warranty	Ceramic	20 Year Limited Color Warranty										15 Year Same as CREATIV	
Creativ		15 Year Limited Finish Warranty						N/A						
Wall Assembly	Rainscreen		Built-in Rainscreen System through clip-on installation											
	Thermal Barrier Effect		0.089 m2 K/W	0.114 m2 K/W								0.089 m2 K/W /Nominal		
	Noise Barrier Performance		Acoustic transmission loss 29db in the 500Hz, 33db in the 1000Hz											
Delivery	Ceramic		Made in Japan, 8–10 weeks lead time, pre-packaged job pack										8–10 weeks Same as Ceramic	
	Creativ		Finished in USA, 6 – 8 weeks lead time, pre-packaged job pack						N/A					
		* Filtrated products (Contemporary Smooth and Bare Concrete panels) can not be used in areas where freeze/thaw weathering occurs more than 80 days per year. ** Effect of graffiti resistance may vary depending on types of graffiti materials used and the performance of the ceramic coating may be affected by graffiti removal.												

## PANEL CHARACTERISTICS

Design	Textures		Holme	Earth Bands	Mille Feuille	Antique Brick	Ledge Stone	Strata Stone	Antique Sawn	Modern Stripe	Chateau Brick	Ridged Concrete	Wood Stack
													
	Colors	Ceramic	Proprietary 3 colors	Proprietary 3 colors	Proprietary 3 colors	Proprietary 3 colors	Proprietary 4 colors	Proprietary 4 colors	Proprietary 4 colors	Proprietary 4 colors	Proprietary 3 colors	Proprietary 3 colors	Proprietary 3 colors
		Creativ	N/A										
Base Material	Panel Type		Extruded										
	Dimension		W: 18"×L: 10'×T: 5/8"									T: 7/8"	T: 5/7"
	Weight		49 lb.	46 lb.	46 lb.	44 lb.	46 lb.	44 lb.	44 lb.	49 lb.	44 lb.	57 lb.	51 lb.
	Fire Resistance		Non-combustible, Class A rated										
	Assembly Wind Resistance		Please refer to the Fire and Wind Certification Data at the end of the Technical Resources section.										
	Recycled Material Content		Approximately 45%										
	Dimensional Stability		The maximum dimensional change per year is approximately 0.05%										
	Freeze/thaw Resistance		Yes										
	Impact Resistance		Yes										
Warranty		50 Year Limited Warranty											
Coating	Finish		Factory finished										
	Protective Top Coat	Ceramic	Ceramic coating in proprietary colors										
		Creativ	N/A										
	Graffiti Resistant	Ceramic	Yes*										
		Creativ	N/A										
	Warranty	Ceramic	20 Year Limited Color Warranty										
Creativ		N/A											
Wall Assembly	Rainscreen		Built-in Rainscreen System through clip-on installation										
	Thermal Barrier Effect		0.114 m2 K/W /Nominal										
	Noise Barrier Performance		Acoustic transmission loss 29db in the 500Hz, 33db in the 1000Hz /Nominal										
Delivery	Ceramic		Made in Japan, 8–10 weeks lead time, pre-packaged job pack										
	Creativ		N/A										
			* Effect of graffiti resistance may vary depending on types of graffiti materials used and the performance of the ceramic coating may be affected by graffiti removal.										

## PRODUCTION TECHNOLOGY

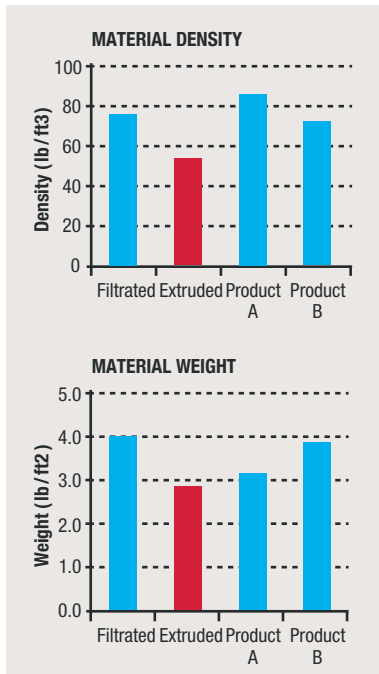
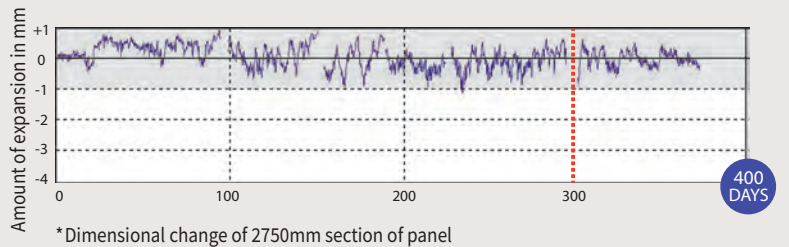


Autoclave for curing **CERACLAD** panels

### EXCELLENT DIMENSIONAL STABILITY ✓EXTRUDED / FILTRATED

All **CERACLAD** panels are cured in an autoclave to produce excellent dimensional stability. Other cement panel products can take several years to fully cure, with a risk of warping of the base material over time. **CERACLAD** panels are subjected to high pressure and temperatures to accelerate curing. The maximum amount of expansion and contraction after 400 days is  $\pm 1.1\text{mm}$  or 0.05%.

#### LENGTH CHANGE OF EXTRUDED PANEL IN EXPOSURE TEST\*



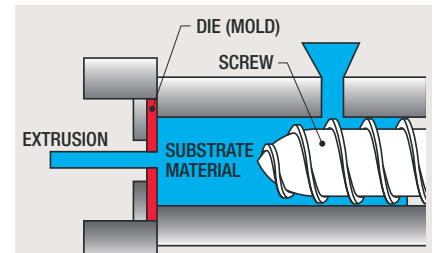
### LIGHT WEIGHT ✓EXTRUDED

**CERACLAD** extruded panels are manufactured by an extrusion process that produces lower density and lighter weight panels that are easier to install and reduce stress on the building structure.

#### EXTRUDED PANELS



Extruded panels have cavities in the material to help reduce weight



Our extrusion process produces lower density and lighter weight panels

### ENVIRONMENTALLY FRIENDLY

In our manufacturing process, all discharged water is treated by the latest treatment technologies and recycled as much as possible. Advanced co-generation systems with high thermal efficiency enable the plants to maintain a strong commitment to energy conservation.



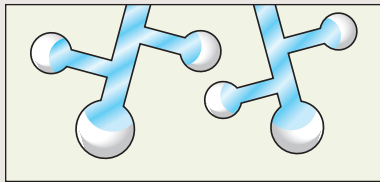
## BASE MATERIAL TECHNOLOGY

### EXCELLENT RESISTANCE TO FREEZING/THAWING

✓EXTRUDED

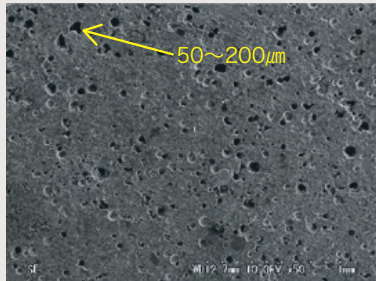
When moisture contained inside the base material freezes, it expands and can cause frost damage. Manufactured with an extrusion process, **CERACLAD** panels have a large number of fine independent voids inside the base material. This absorbs and relieves the pressure due to volume expansion caused by moisture freezing. **CERACLAD** extruded has a volume swelling rate of approximately 2% even after 600 cycles.

#### FREEZE / THAW RESISTANCE



#### After freezing

Expanded ice escapes into independent air gaps. The gaps relieve the pressure that occurs when trapped water freezes, preventing frost damage.



Close-up of panel surface

### IMPACT RESISTANCE ✓EXTRUDED / FILTRATED

Because **CERACLAD** panels are reinforced with thousands of fibers, impact resistance is improved as compared to stucco and thinner fiber-cement siding products.

### MADE FROM RECYCLED MATERIAL ✓EXTRUDED / FILTRATED

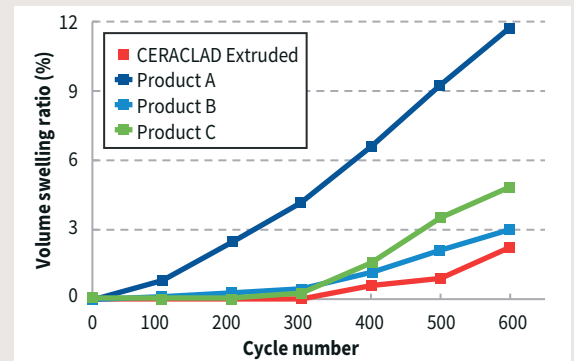
Fly ash and pulp are included as recycled materials, reducing resource consumption during production. Consisting of approximately 45% recycled material, the panels are 100% recyclable, factory finished with no VOC, and contain no asbestos.



#### JIS A 1435 - FREEZING AND THAWING PERFORMANCE TEST

(Samples frozen in air at -20 °C for 2hrs, then thawed in water at 10 °C for 1hr)

#### CYCLE TIME (Hours)



Extruded **CERACLAD** products are more resistant to freeze/thaw weathering cycles than typical fiber cement siding products.



Hollow core **CERACLAD** panel after 600 freeze/thaw cycles. Extruded panel demonstrates its strength even in cold climates.



## COATING TECHNOLOGY

### 15 YEARS ACHIEVEMENT



2002



2017



#### Closeup of wall in 2017

Even after 15 years of performance the panels exhibited no "chalking", no deterioration of the ceramic coating and no color change.

### LONG-TERM WEATHER RESISTANCE

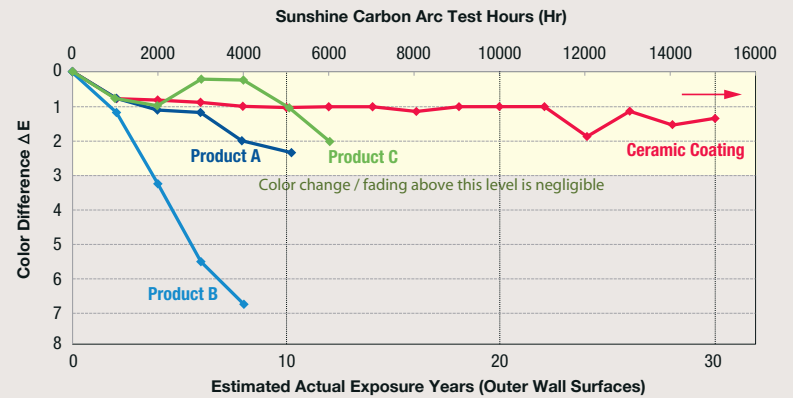
✓ CERAMIC PANELS

**CERACLAD**'s inorganic ceramic coating has excellent UV blocking properties to protect the color layer from ultraviolet rays and minimize fading of the outer wall. Maintenance costs are reduced by virtually eliminating the need for repainting. This technology is exclusive to **CERACLAD**.

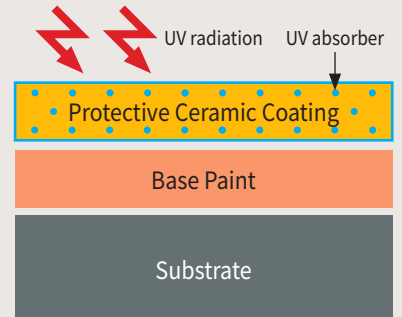
### EXPOSURE TEST

**CERACLAD** panels have been tested in Arizona, Florida and Singapore. Even in Singapore where ultraviolet rays are particularly strong, there was almost no color change. And in the Sunshine Carbon Arc test, an accelerated weathering resistance test which simulates 30 years of sun exposure, there was almost no color change on the **CERACLAD** panels.

#### SUNSHINE CARBON ARC TEST



#### SECTIONAL VIEW OF CERAMIC COATED PANEL




The ultraviolet absorber layer prevents the penetration of ultraviolet rays into the colored layer.

## COATING TECHNOLOGY

### EASY GRAFFITI REMOVAL ✓ CERAMIC PANELS

Graffiti doesn't stand a chance with **CERACLAD**. The protective coating on **CERACLAD** ceramic panels makes removing graffiti possible. The images below show what happened when we painted a **CERACLAD** panel and a competitor's panel with standard acrylic lacquer paint and then tried to remove it with ethanol. The **CERACLAD** panel cleans up nicely; the other panel, not so much.

**GRAFFITI REMOVAL**

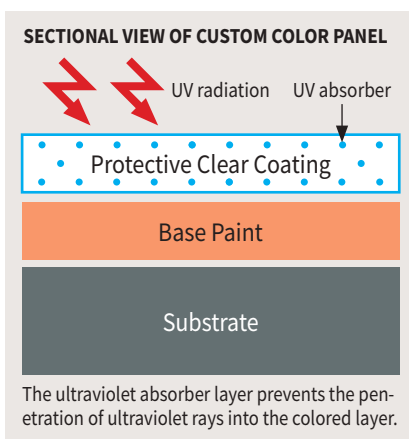


**CERACLAD** ceramic panel      Competitor's panel

NOTE: Our ceramic coating does not actually repel graffiti but makes it easier to remove graffiti similar to "non-sacrificial" graffiti treatment products. The ability to remove graffiti will depend on the type of paint used. Ethanol is commonly used for graffiti removal. **CERACLAD** does not warrant that the performance of the panel coating will be the same after graffiti removal.

### CUSTOM COLOR COATING ✓ CREATIV™ PANELS

Choose your own color with our **CREATIV™** custom color program. **CERACLAD CREATIV™** panels are made with a color coat, followed by a clear coat to protect the panels from ultraviolet rays and to minimize discoloration on the building exterior. Other custom color products are made with just one color coat. This extra color protection reduces or eliminates the need for repainting and



lowers maintenance costs. And our custom color panels come with a 15-year finish warranty.

Our proprietary colors, custom colors and our ceramic and clear coatings are all applied in our factory during manufacturing to ensure quality. Two factory applied finish coats prevent fading.

### FACTORY FINISH



One of our **CERACLAD** factories

Both ceramic and clear coating are applied at one of our factories so you can be confident that you'll receive consistent quality.

# BARRIER TECHNOLOGY

## THERMAL BARRIER EFFECT

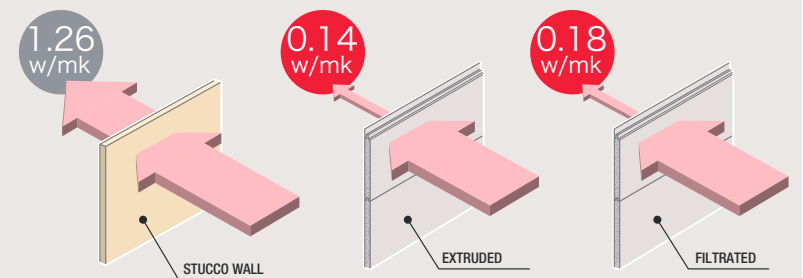
**CERACLAD** exterior siding products have excellent thermal resistance properties because of their small thermal conductivity, offering nine times the thermal resistance performance compared to stucco. And because there is a ventilation layer, the rainscreen system further increases thermal resistance properties. **CERACLAD** has 9 times the thermal resistance properties of stucco.

### THERMAL RESISTANCE PROPERTIES

Product Material	Thickness	Thermal Conductivity W / (M·K)	Thermal Resistance (M <sup>2</sup> /K)/W
Stucco Wall	—	1.26	—
Extruded	16mm	0.14	0.114
Filtrated	16mm	0.18	0.089

This is thermal resistance performance of only product. Thermal resistance ((m<sup>2</sup>/K)/W) = Material thickness (m) ÷ Thermal conductivity (W/mK)

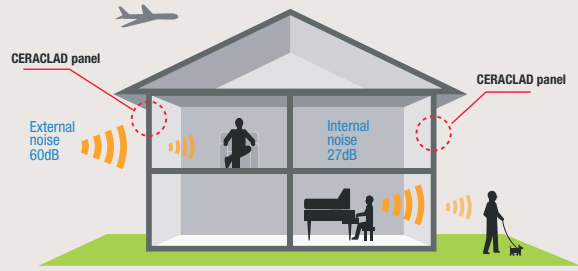
### THERMAL RESISTANCE PROPERTIES



**CERACLAD** has 9 times the thermal resistance properties of stucco (Test method: JIS A 1412)

### NOISE BARRIER PROPERTIES

Test method (JIS A 1416)  
 Frequency 1000Hz



### SOUND REDUCTION PROPERTIES

Frequency	Reduction
1000 Hz	33 dB
500 Hz	29 dB

## NOISE BARRIER EFFECT

Outer walls covered with **CERACLAD** provide excellent protection from sound in the range of 250 to 1000 Hz, where the human ear is most sensitive. In addition to protecting inhabitants against noise from the outside, sound leakage from the inside is also alleviated. And because there is a ventilation layer, the rainscreen system further increases noise barrier effect.

## MOISTURE BARRIER EFFECT

**CERACLAD**'s Rainscreen System keeps water out two ways: by suppressing dew condensation and by closing joints to prevent rain water from intruding. This helps prevent decay, speeds moisture release and prevents mold from growing.



## FIRE AND WIND CERTIFICATION

### FIRE RESISTANCE CHARACTERISTICS

**CERACLAD** panels have a Class 1 (A) Flame Spread Classification-0, Smoke Developed Classification-0 when tested in accordance with ASTM E84. Panels are Non-Combustible when tested in accordance with ASTM E136 and CAN ULC S114. **CERACLAD** extruded and filtrated panels comply with the requirements specified by ASTM E136 and CAN ULC S114 to be considered as non-combustible.

### ASSEMBLY WIND RESISTANCE

ASTM E330 Standard Test Methods of Conducting Strength Test of Panels for Building Construction. Maximum allowable transverse loads, based on a safety factor of 3, are available for the following combinations of wall assembly and **CERACLAD** assembly:

<b>CERACLAD PANEL Extruded</b>		
Wall Assembly	<b>CERACLAD</b> Assembly	Allowable positive and negative loads
2×6 wood stud framing 16" o.c. with 1/2" plywood sheathing	Horizontal application 1-3/8" No.8 screw per clip, clip placed 16"o.c. attached through plywood sheathing to wood stud	25 psf
2×6 wood stud framing 16" o.c. with 1/2" plywood sheathing	Vertical application 1-3/8" No.8 screws 2 per clip attached into plywood sheathing	21 psf
18GA steel channel 17-7/8" o.c. attached to 18GA steel studs	Horizontal application 3/4" No.8 screws 2 per clip, clip placed 16"o.c. attached to steel channel	23 psf
18GA steel channel 16" o.c. attached to 18GA steel studs	Vertical application 3/4" No.8 screws 2 per clip, clip placed 16"o.c. attached to steel channel	21 psf

For SI: 1 inch=25.4mm, 1 foot=305mm, 1 psf=47.88Pa. For the latest performance values, please check the website at <https://ceraclad.com>.

The CERACLAD Express Limited Transferable Warranty

**1. WARRANTY COVERAGE:**

KMEW USA, Inc. (“KMEW”) warrants to the purchaser and to its transferees, including the original owner of the property upon which its Product (the KMEW CERAMIC COATING SIDING - the “Ceramic Product” or the KMEW CUSTOM COLOR SIDING - the “CREATIV™ Product”, or the KMEW Acrylic Finish Product – the “Acrylic Product” collectively, the “Product”) is installed as external walls, and up to the first subsequent owner of the property (each a “Covered Person”. In the event of a multi-unit condominium, “Covered Person” shall mean the Condominium Association, Owners’ Association, or similar governing body for the owner/residents of the structure) that when manufactured, the Product is free from defects in material and manufacture, and when used for its intended purpose and properly stored, installed and maintained per the CERACLAD installation manual, the Product shall be warranted as follows:

**NOTICE:** All warranty periods discussed and defined herein shall be deemed to commence on the date of purchase of the Product by the party installing the Product or, as applicable, on the date of purchase of the Product by the property owner for third-party installation. This warranty is applicable only to installations occurring within the United States and Canada.

**50 Year Limited Warranty:** The Product shall: not incur structural cracking, rot or delaminate under normal wear, and shall resist damage caused by termites for a period of 50 years under normal use.

**20 Year Limited Warranty:** The Ceramic Product finish shall (A) retain its color and luster (meaning color fade shall not exceed color No.1 – 2 and E=9.6 in accordance with ISO 105-A02:1990, Test for color fastness - Part A02: Grey scale for assessing change in color) for color integrity, and shall not significantly (B) peel, (C) incur structural cracking, or (D) chip, for a period of 20 years under normal use.

**15 Year Limited Warranty:** The CREATIV™ Product and the Acrylic Finish Product finish shall not significantly (A) peel, (B) incur structural cracking, or (C) chip, for a period of 15 years under normal use.

**2. WARRANTY DURATION:**

This Limited Warranty will continue in favor of a Covered Person for the respective consecutive years provided above.

**3. WARRANTY EXCLUSIONS:**

This Warranty covers only the specific manufacturing defects described in Section 1 above. Notwithstanding anything herein to the contrary, failures attributable to any other reason including, but not limited to, those set forth below, are hereby specifically excluded from warranty coverage:

- A. improper storage, shipping, handling, or installation (please refer to CERACLAD installation manual and website);
- B. improper design and/or construction of the building/structure to which the Product is attached;
- C. lack of, or improper, maintenance and repair after installation (please refer to CERACLAD installation manual and website);
- D. any unauthorized alteration of the Product;
- E. attachment of non-authorized accessories to the Product (for a list of authorized accessories, please refer to CERACLAD installation manual and website);
- F. warping, cracking, settling, or other movement or condition of the building/structure to which the Product is attached;
- G. substrate failures which cause or contribute to any compromise or failure of the Product. This exclusion applies to both supporting and non-supporting substrates (including, but not limited to, glass mat gypsum substrate/gypsum, plywood/OSB sheathing, and structural framing/stud) used under or attached to the Product;
- H. acts of God including, but not limited to, lightning, hurricanes, tornadoes, floods, earthquakes, mudslides or any other severe weather or natural phenomena;
- I. unauthorized sealer or caulking;
- J. paint, or other coating or finish applied after purchase;
- K. mold, mildew, fungi, bacteria, or any organism that is allowed to grow on the surface of the Product;
- L. industrial pollution (including acid, alkali, sulfur, noxious gases;

- M. exposure to salt spray, heat sources;
- N. submersion or continuous exposure to moisture (spray, splash from ocean, lake, pond or river);
- O. exceeding maximum design wind load as specified in ICC ESR-1627;
- P. other unusual or unreasonable conditions in the surrounding physical environment; and
- Q. any other such similar or dissimilar occurrences beyond the control of KMEW.

**NOTICE:** DAMAGE CAUSED BY ANY PRODUCT INSTALLATION, REPAIR, OR REPLACEMENT THAT IS NOT IN ACCORDANCE WITH THE CERACLAD INSTALLATION MANUAL, AS WELL AS DAMAGE CAUSED BY PRODUCT INSTALLATION ON INAPPROPRIATE BUILDINGS/STRUCTURES, IS HEREBY SPECIFICALLY EXCLUDED FROM WARRANTY COVERAGE. PLEASE REVIEW THE CERACLAD INSTALLATION MANUAL AND WEBSITE FOR THIS PRODUCT.

**4. WARRANTY CONDITIONS:**

KMEW’s liability hereunder to the Covered Person shall also be subject to each of the following additional terms and conditions:

- A. The claimant must provide proof that he/she is a Covered Person;
- B. The CERACLAD installation manual for the proper storage, shipping, handling, installation and maintenance of the Product must have been followed at all times (failure to do so may affect Product performance and void the Warranty); and
- C. UPON DISCOVERY OF A POSSIBLE COVERED PRODUCT DEFECT OR FAILURE, AND PRIOR TO MAKING ANY PERMANENT REPAIR TO THE PRODUCT, THE COVERED PERSON MUST, AT ITS OWN COST AND EXPENSE: (i) PROMPTLY PROVIDE FOR PROTECTION OF ALL PROPERTY THAT COULD BE FURTHER DAMAGED UNTIL SUCH TIME THAT THE POSSIBLE COVERED DEFECT OR FAILURE HAS BEEN REPAIRED; (ii) PROMPTLY, BUT IN NO EVENT LATER THAN THIRTY (30) DAYS AFTER DISCOVERY, PROVIDE WRITTEN NOTICE TO KMEW OF THE POSSIBLE COVERED PRODUCT DEFECT OR FAILURE (AS PROVIDED BELOW); AND (iii) ALLOW KMEW A REASONABLE PERIOD OF TIME (UP TO 25 BUSINESS DAYS AFTER

# Warranty

NOTICE HAS BEEN RECEIVED BY KMEW) AS WELL AS PROVIDE REASONABLE ACCESS THROUGHOUT THE PROPERTY TO KMEW OR KMEW'S AGENT SO THEY CAN EXAMINE, PHOTOGRAPH AND/OR TAKE SAMPLES OF THE PRODUCT.

## 5. WARRANTY CLAIMS:

Claims under this Limited Warranty, must be promptly presented in writing to KMEW USA Inc., 15359 NE 90th St., Redmond, WA 98052, and must include:

- A. The address and location of the structure;
- B. Details (including photos) of the alleged defect or failure sufficient for KMEW to begin investigating the claim;
- C. Proof of owner or installer's date of purchase;
- D. The name of the owner, builder or installer; and
- E. Proof that you are a Covered Person (as defined in Section 1 above).

## 6. WARRANTY REMEDY:

If, after investigation, KMEW, in its sole discretion, determines that a warranted defect exists, KMEW shall do the following:

During the First Year After Purchase:

(Before Installation): Replace<sup>1</sup> the defective portion of the Product or reimburse Covered Person the Original Purchase Price<sup>2</sup> of the defective portion of the Product.

(After Installation): For CREATIV™ Product and Acrylic Finish Product: Provide a quantity of coating sufficient to cover the defective portion, or reimburse the Covered Person up to \$1.00 per square foot for repair of the defective portion.

For Ceramic Product: Replace<sup>1</sup> the defective portion of the Product or reimburse the Covered Person for resulting losses up to the Original Purchase Price<sup>2</sup> of the defective portion of the Product.

Beyond the First Year After Purchase (whether or not installed):

For CREATIV™ Product and Acrylic Finish Product: Reimburse the Covered Person up to \$1 per square foot for repair of the defective portion, reduced by 6.67% for each year from the original date of purchase, such that after the 15th year no warranty shall remain.

For Ceramic Product: Replace<sup>1</sup> the defective portion of the Product or reimburse the Covered Person up to the Original Purchase Price<sup>2</sup> of the defective portion of the Product, reduced by 5% for each year from the original date of purchase, such that after the 20th year no warranty shall remain.

For All Other Claims under the 50 year Warranty: Replace<sup>1</sup> the defective portion of the Product or reimburse the Covered Person up to the Original Purchase Price<sup>2</sup> of the defective portion of the Product, reduced by 2% for each year from the original date of purchase, such that after the 50th year no warranty shall remain.

REFUND OR PRODUCT REPLACEMENT BY KMEW SHALL BE AT KMEW'S SOLE DISCRETION AND SHALL BE THE SOLE AND EXCLUSIVE REMEDY WITH RESPECT TO ANY DEFECT; AND ACCEPTANCE BY ANY COVERED PERSON SHALL CONSTITUTE A FULL SETTLEMENT AND RELEASE OF ALL CLAIMS FOR DAMAGES OR OTHER RELIEF. FOR CLAIMS INVOLVING BOTH COLOR AND OTHER DEFECTS, THE HIGHER REIMBURSEMENT RATE SHALL PREVAIL. KMEW WILL NOT REFUND OR PAY ANY COSTS IN CONNECTION WITH LABOR OR ACCESSORY MATERIALS.

1. KMEW reserves the right to modify or to discontinue any of its products without notice and shall not be liable as a result of such modification or discontinuation. In such event, a suitable replacement product will be determined by KMEW in its sole and reasonable discretion.

2. If the Original Purchase Price cannot be established by the Covered Person, it shall be determined by KMEW in its sole and reasonable discretion.

## 7. WARRANTY DISCLAIMER:

The statements herein constitute the only warranty extended by KMEW for the Product. KMEW DISCLAIMS ALL OTHER WARRANTIES, EXPRESS OR IMPLIED, INCLUDING ANY IMPLIED WARRANTIES OF MERCHANTABILITY OR FITNESS FOR A PARTICULAR PURPOSE, EXCEPT WHERE PRODUCT PURCHASE IS SUBJECT TO CONSUMER PRODUCT WARRANTY LAW, OR BY USAGE OF TRADE OR COURSE OF DEALING IN WHICH INSTANCES

THE DURATION OF ANY APPLICABLE WARRANTIES ARE LIMITED TO THE FIRST ELAPSE OF THE WARRANTY PERIOD PROVIDED ABOVE, OR SUCH SHORTER PERIOD AS APPLICABLE LAW PERMITS OR REQUIRES. Some states do not allow limitations on how long an implied warranty lasts, so the above limitation may not apply to you. IN NO EVENT WILL KMEW HAVE ANY LIABILITY FOR ANY INCIDENTAL, SPECIAL, INDIRECT, CONSEQUENTIAL OR OTHER DAMAGES (WHETHER RESULTING FROM NONDELIVERY OR FROM THE USE, MISUSE, OR INABILITY TO USE THE PRODUCT OR FROM DEFECTS IN THE PRODUCT). Some states do not allow the exclusion or limitation of incidental or consequential damages, so the above limitation may not apply to you. NO OTHER WARRANTY WILL BE MADE BY THE MANUFACTURER OR THE SELLER OR BY OPERATION OF LAW OR BY USAGE OF TRADE OR COURSE OF DEALING WITH RESPECT TO THE PRODUCT OR ITS INSTALLATION, STORAGE, HANDLING, MAINTENANCE, USE, REPLACEMENT OR REPAIR. This Warranty gives you specific legal rights and you may also have other rights which vary from state to state.

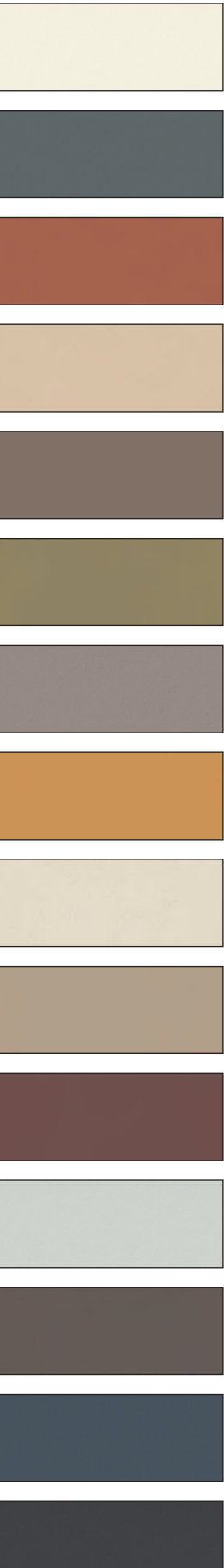
## 8. DISPUTE RESOLUTION:

Any dispute arising under this Warranty shall be resolved by arbitration conducted in King County State of Washington, United States of America pursuant to the then current rules of the American Arbitration Association, applying the laws of the State of Washington without regard to its internal conflicts of laws provisions. The award of the arbitrator shall be final and binding. Each party shall be responsible for its own legal fees and costs, as well as its equal share of any arbitrators' fees.

NOTICE: Please print this card for your records.

For the latest warranty policy, please check the website: <https://ceraclad.com/>

Manufactured by:  
**KMEW Co., Ltd.**  
13F, Crystal Tower Bldg.  
1-2-27 Shiromi, Chuo-ku,  
Osaka 540-6013 Japan  
Tel: +81-6-6945-8123



May 2020 version 14

Please visit our website for additional **CERA CLAD** product information including:

- Product samples
- Custom color samples
- REVIT downloads
- CAD details
- Specifications
- Product performance and approval documents
- MSDS

[www.ceraclad.com](http://www.ceraclad.com)

MANUFACTURED BY:  
**KMEW Co., Ltd.**  
 13F, Crystal Tower Bldg.  
 1-2-27 Shiromi, Chuo-Ku,  
 Osaka 540-6013  
 Japan

REPRESENTED BY:  
**KMEW USA Inc.**  
 15359 NE 90th Street  
 Redmond, WA 98052  
 USA

**CREATIV™**  
 CUSTOM COLOR PROGRAM