



Hope Always Rises

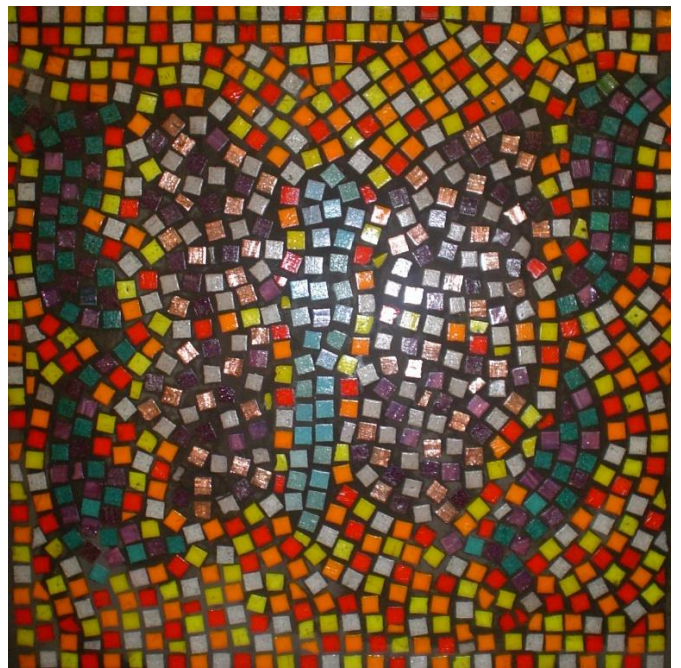
Mixed media mosaic sculpture
2.5m x 3.1m x 80cm

Commissioned by National Museums Liverpool and Marie Curie. The project saw the creation of a series of mosaic mural pieces and mosaic paving stones made during the project.

The project participants who designed and made the mosaics were a range of young people from families who linked to the services of the Hospice. Who, for instance, may have had a parent undergoing treatment or palliative care provided by the Hospice and staff.

The mosaics are situated in the Marie Curie Memorial Garden in Greenbank Park, Liverpool, and within the Marie Curie





Mosaic panels made by young people who were participants in the project