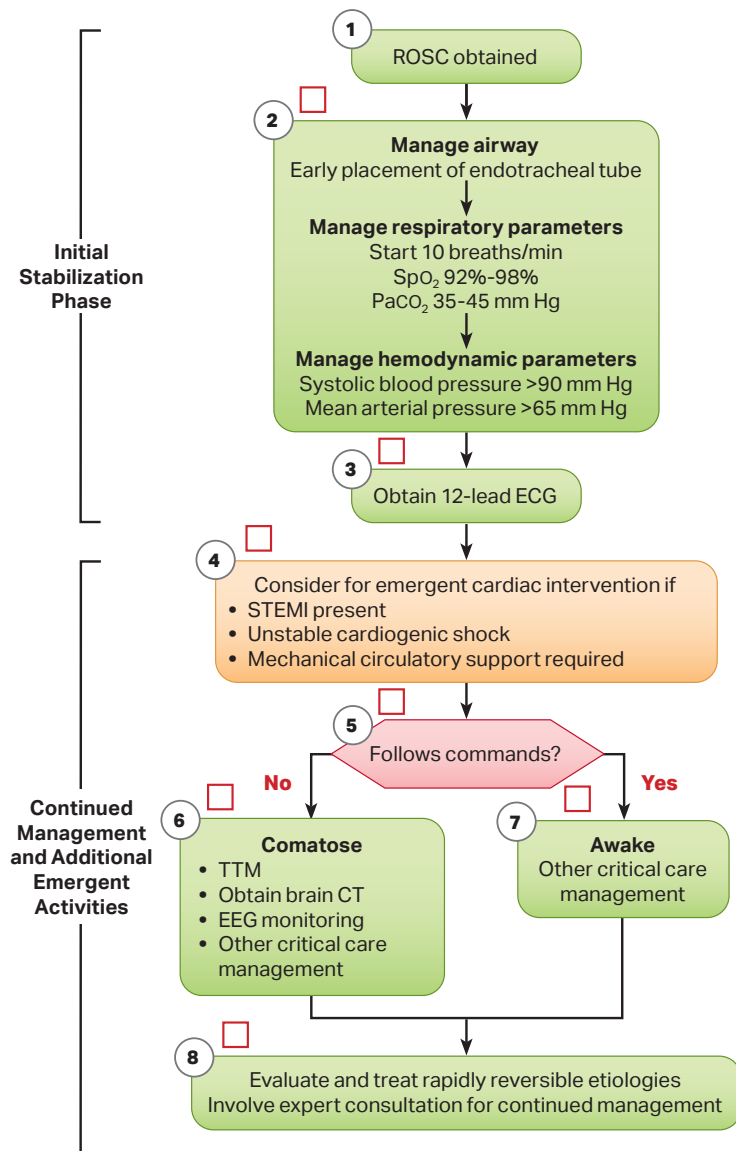


Adult Post-Cardiac Arrest Care Learning Station Checklist

Adult Post-Cardiac Arrest Care Algorithm



Initial Stabilization Phase

Resuscitation is ongoing during the post-ROSC phase, and many of these activities can occur concurrently. However, if prioritization is necessary, follow these steps:

- Airway management: Waveform capnography or capnometry to confirm and monitor endotracheal tube placement
- Manage respiratory parameters: Titrate FiO_2 for SpO_2 92%-98%; start at 10 breaths/min; titrate to $PaCO_2$ of 35-45 mm Hg
- Manage hemodynamic parameters: Administer crystalloid and/or vasopressor or inotrope for goal systolic blood pressure >90 mm Hg or mean arterial pressure >65 mm Hg

Continued Management and Additional Emergent Activities

These evaluations should be done concurrently so that decisions on targeted temperature management (TTM) receive high priority as cardiac interventions.

- Emergent cardiac intervention: Early evaluation of 12-lead electrocardiogram (ECG); consider hemodynamics for decision on cardiac intervention
- TTM: If patient is not following commands, start TTM as soon as possible; begin at 32-36°C for 24 hours by using a cooling device with feedback loop
- Other critical care management
 - Continuously monitor core temperature (esophageal, rectal, bladder)
 - Maintain normoxia, normocapnia, euglycemia
 - Provide continuous or intermittent electroencephalogram (EEG) monitoring
 - Provide lung-protective ventilation

H's and T's

- Hypovolemia
- Hypoxia
- Hydrogen ion (acidosis)
- Hypokalemia/hyperkalemia
- Hypothermia
- Tension pneumothorax
- Tamponade, cardiac
- Toxins
- Thrombosis, pulmonary
- Thrombosis, coronary