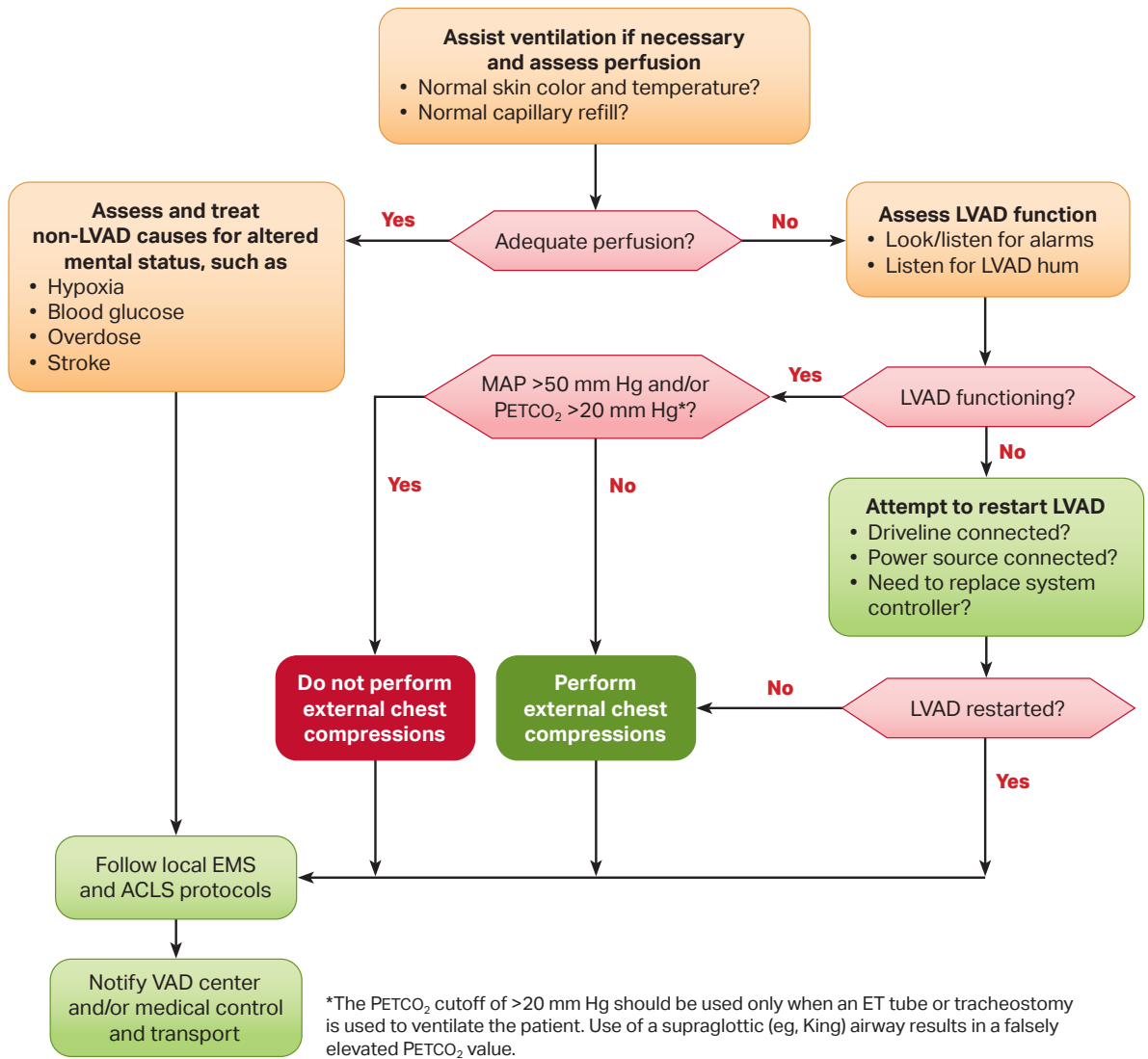


Adult Ventricular Assist Device Learning Station Checklist

Adult Ventricular Assist Device Algorithm



*The PETCO₂ cutoff of >20 mm Hg should be used only when an ET tube or tracheostomy is used to ventilate the patient. Use of a supraglottic (eg, King) airway results in a falsely elevated PETCO₂ value.