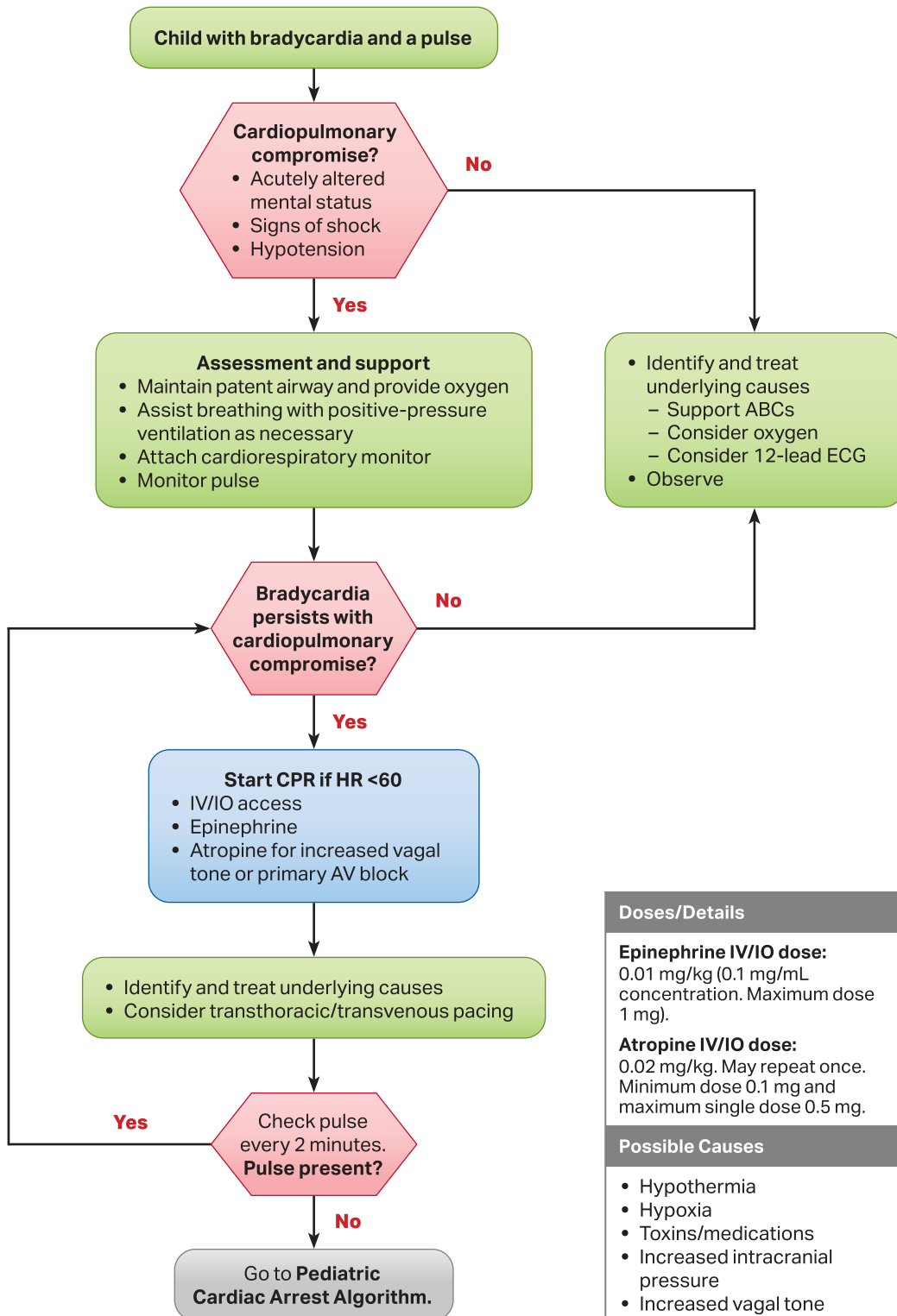


## Pediatric Bradycardia With a Pulse Algorithm



### Doses/Details

**Epinephrine IV/IO dose:**  
0.01 mg/kg (0.1 mg/mL concentration. Maximum dose 1 mg).

**Atropine IV/IO dose:**  
0.02 mg/kg. May repeat once. Minimum dose 0.1 mg and maximum single dose 0.5 mg.

### Possible Causes

- Hypothermia
- Hypoxia
- Toxins/medications
- Increased intracranial pressure
- Increased vagal tone
- Heart block
- Physiologic/appropriate