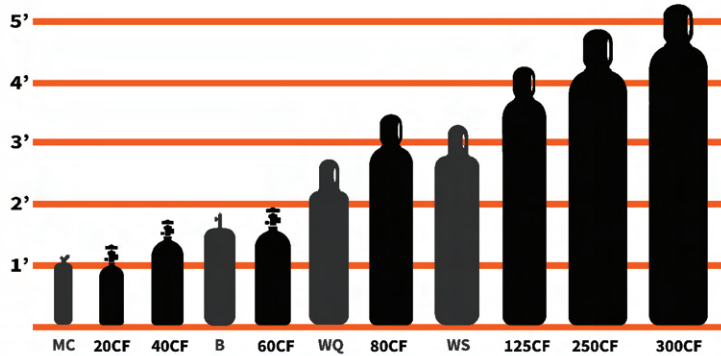


WASCO

WASCOINDUSTRIAL.COM GAS AND WELDING SUPPLY

860-315-9225



Industrial Gases

- Argon
- CO2
- Acetylene
- Propylene
- Helium
- Oxygen
- Nitrogen
- Propane
- Mix Gases

\$2.38per ft



XTRweld - Welding Cable



TURBO-SHARP X



\$807.40

The Turbo-Sharp X is a portable enclosed tungsten grinder that minimizes preparation time and minimizes exposure to grinding dust, which is harmful to both the user and environment.

Product#	Size	Length	Amp	UOM	Price
XTRWCSN2B-250	#2 AWG	250'	200	Foot	\$2.38
XTRWCSN1B-250	#1 AWG	250'	250	Foot	\$3.02
XTRWCS1/0B-250	1/0 AWG	250'	350	Foot	\$3.75
XTRWCS2/0B-250	2/0 AWG	250'	400	Foot	\$4.54

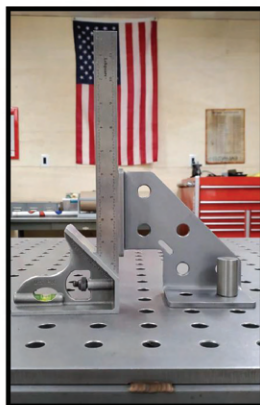
Mitering Metal Chop Saw (14" Blade) Part # S355MCS

\$849

Built for professionals, the S355MCS Mitering Chop Saw from Evolution is the first 14" TCT industrial Chop Saw that allows you to produce accurate miter cuts without having to reposition the workpiece.



EVOLUTION POWER TOOLS



Speed Squares	
4" pack of 4	\$95
6" pack of 2	\$85
8" pack of 2	\$90
10" pack of 2	\$135



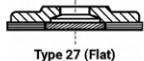
Due to marketplace volatility, prices are subject to change without notice.

Abrasives



Ovation Attacker High Density Flap Disc - Type 27

Application	Contour finishing, Deburring, Finishing and blending, Weld grinding and blending
Stainless	Stainless steel, high tensile steel, titanium
Metal	Ferrous Metals
Aluminum	Non-ferrous metals (aluminum, copper, brass, etc.)



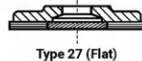
Available with 5/8"-11 Hub and in 5", 6", and 7" sizes

DIA	Arbor	Grit	RPM	QTY	Part #	Price
4.5"	7/8"	40	13300	10	76206	\$9.06
4.5"	7/8"	60	13300	10	76208	\$9.06
4.5"	7/8"	80	13300	10	76209	\$9.06
4.5"	7/8"	120	13300	10	76211	\$9.06



Encore - Type 27 Regular Density Flap Disc

Application	Contour finishing, Deburring, Finishing and blending, Weld grinding and blending
Stainless	Stainless steel, high tensile steel, titanium
Metal	Ferrous and/ or non-ferrous metals
Aluminum	Non-ferrous metals (aluminum, copper, brass, etc.)



Available with 5/8"-11 Hub and in 5" size

DIA	Arbor	Grit	RPM	QTY	Part #	Price
4.5"	7/8"	40	13300	10	71206	\$5.55
4.5"	7/8"	60	13300	10	71208	\$5.55
4.5"	7/8"	80	13300	10	71209	\$5.55
4.5"	7/8"	120	13300	10	71211	\$5.55



A60S - .045 General Purpose - Type 27

Application	Cutting
Metal	Ferrous and/ or non-ferrous metals (iron, steel, welds, etc.)

Available with 5/8"-11 Hub

DIA	Arbor	RPM	QTY	Part #	Price
4.5"	7/8"	13300	50	22021	\$2.75
5"	7/8"	12200	50	22071	\$3.15
6"	7/8"	10200	50	22047	\$3.45
7"	7/8"	8500	50	22053	\$3.78



The Ultimate Cut - .045 Premium Performance - Type 27

Application	Cutting
Stainless	Stainless steel, high tensile steel, titanium
Metal	Ferrous and/ or non-ferrous metals
Aluminum	Non-ferrous metals (aluminum, copper, brass, etc.)

Available with 5/8"-11 Hub

DIA	Arbor	RPM	QTY	Part #	Price
4.5"	7/8"	13300	50	22380	\$3.37
5"	7/8"	12200	50	22385	\$3.97
6"	7/8"	10200	50	22390	\$4.26



A24N - 1/4" Fast Grinding - Type 27

Application	Grinding
Metal	Ferrous and/ or non-ferrous metals (iron, steel, welds, etc.)
Stainless	Low grade stainless steel

Available with 5/8"-11 Hub, 3/8" arbor, and 5/8" arbor

DIA	Arbor	RPM	QTY	Part #	Price
4.5"	7/8"	13300	25	20060	\$2.46
5"	7/8"	12200	25	20070	\$4.15
6"	7/8"	10200	25	20078	\$5.26
7"	7/8"	8500	25	20081	\$5.60
9"	7/8"	6600	25	20091	\$8.25



Ultimate Performance - 1/4" Premium Performance - Type 27

Application	Grinding
Stainless	Stainless steel, high tensile steel, titanium
Metal	Ferrous metals (iron, steel, welds, etc.)

Available with 5/8"-11 Hub, 3/8" arbor, and 5/8" arbor

DIA	Arbor	RPM	QTY	Part #	Price
4.5"	7/8"	13300	25	20064	\$9.32
5"	7/8"	10200	25	20074	\$12.29
7"	7/8"	8500	25	20084	\$14.71
9"	7/8"	6600	25	20094	\$19.71

Abrasives



3A Aluminum Oxide Fiber Disc with Grinding Aid

Application	Grinding and Blending
Stainless	Stainless steel, high tensile steel, titanium
Metal	Ferrous Metals
Aluminum	Non-ferrous metals (aluminum, copper, brass, etc.)

Available in 5", 6", and 7" sizes

DIA	Arbor	Grit	QTY	Part #	Price
4.5"	7/8"	36	100	52890	\$1.80
4.5"	7/8"	50	100	52891	\$1.74
4.5"	7/8"	60	100	52892	\$1.65
4.5"	7/8"	80	100	52893	\$1.54
4.5"	7/8"	100	100	52894	\$1.54
4.5"	7/8"	120	100	52895	\$1.54



9.3 Ceramic with Grinding Aid Premium performance Fiber Disc

Application	Grinding and Blending
Stainless	Stainless steel, high tensile steel, titanium
Metal	Ferrous Metals
Aluminum	Non-ferrous metals (aluminum, copper, brass, etc.)

Available in 5", 6", and 7" sizes

DIA	Arbor	Grit	QTY	Part #	Price
4.5"	7/8"	36	100	58207	\$3.18
4.5"	7/8"	50	100	58208	\$2.86
4.5"	7/8"	60	100	58209	\$2.72
4.5"	7/8"	80	100	58210	\$2.52



Challenger 3 - Type 29 High Performance

- . Semi-Flexible
- . Grind and blend welds in one step
- . Open pattern on wheel for cool grinding
- . Contaminant Free
- . Requires no backing pad

DIA	Arbor	Grit	QTY	Part #	Price
4.5"	7/8"	36	10	27610	\$6.15
4.5"	7/8"	60	10	27611	\$6.15
5"	7/8"	36	10	27615	\$8.95
5"	7/8"	60	10	27616	\$8.95

Knot Cup Brush

Available in stainless steel and crimped wire



DIA	Arbor	Part#	Price
4"	5/8"-11	03460	\$20.52
5"	5/8"-11	03373	\$31.71
6"	5/8"-11	03388	\$37.48

Knot Wire Wheel

Available in stainless steel and crimped wire



DIA	Arbor	Part#	Price
2.75"	5/8"-11	03501	\$22.06
3.5"	5/8"-11	03511	\$31.11
6"	5/8"-11	03409	\$56.57

Spiralcool Sait-Lok-R Backing Pad For Quick Change Discs

Available with 1/4" shank



DIA	Part#	Price
1.5"	95292	\$15.74
2"	95293	\$18.12
3"	95294	\$21.00
4"	95295	\$22.82

Spiralcool Backing Pad For Fiber Discs



DIA	Part#	Price
4.5"	95011	\$41.40
5"	95016	\$42.77
6"	95112	\$53.20
7"	95018	\$54.21
9"	95021	\$65.42

Non-Woven Hand Pads



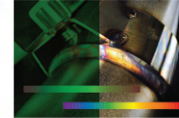
Color	Part#	Price
Brown	77440	\$4.06
Maroon	77447	\$1.74
Black	77446	\$4.06
Green	77496	\$1.74
Gray	77448	\$1.74
White	77486	\$1.74



Sait-Strip Silicon Carbide \$23.25

- . Fast, safe removal of surface contaminants
- . Excellent for cleaning welds, removing corrosion, rust, scaling, and blending
- . Great for removing paints, varnishes and sealants from difficult to reach surfaces

Safety



**True Color View
No Green Tint**



Panoramaxx
Part # 1010.200
\$704.55



Crystal 2.0
Part # 1006.900
\$638.40



Vegaview 2.5
Part # 1006.600
\$417.90



Neo P550
Part # 1007.011
\$265.60



Fourney Pro (Warhawk)
Part # 55938

\$179.99

Auto darkening

Helmet	Part#	Price
Amped	55937	\$179.99
Camo	55936	\$179.99
Warhawk	55938	\$179.99
Black	55935	\$172.99



Fourney ADF (Valor)
Part # 55861

\$109.99

Auto darkening

Helmet	Part#	Price
Lightning	55864	\$109.99
Camo	55735	\$74.99
Scorch	55859	\$109.99
Black	55857	\$89.99



Clearmaxx Standard
Part # 1100.000

\$53.00



Lens	Part#	Price
10pk Lens	5000.038	\$184.67
2pk Shade 3	5000.049	\$72.26
2pk shade 5	5000.048	\$72.26
10pk Tear-off	5000.039	\$29.13



Maxview Face Shield
Part # 138-14201

\$52.27



Jackson Safety Maxview ratcheting headgear system provides easy grab-easy turn adjustments for superior comfort and fit. Lightweight design for total comfort all day use. Anti fog and scratch resistant lens. Framed side and chin area provide added protection.

Conqueror
Part # 28CM5M

\$6.35



. Anti-fog lens and tinted lens available

Color	Part#	Price
Black	28GB79	\$6.25
Camo	28CM79	\$6.40
Old Glory	28USX9	\$8.05



StarLite IR
Part # 4666

\$7.15



. Anti-fog lens and tinted lens available

Shade	Part#	Price
3.0	4664	\$7.15
5.0	4666	\$7.15



StarLite Mag
Part # 46MG15

\$6.42



. Anti-fog lens and tinted lens available

Magnif.	Part#	Price
1.0	46MC10	\$6.05
1.5	46MC15	\$6.05
2.0	46MC20	\$6.05
2.5	46MC25	\$6.05



StarLite
Part # 4683

\$2.00



. Anti-fog lens and tinted lens available

Color	Part#	Price
Clear	4680	\$1.77
Blue	4676	\$2.00
Amber	4675	\$2.00



Safety

Crystal 2.0 PAPR

Part # 4442.900



\$863.00

The Optrel e3000x is the most powerful ventilated breathing protection system available on the market. Make no compromises for safety, comfort, and protection. The e3000x has an integrated airflow sensor, 3 level airflow adjustment, 18 hour battery life, and 240 liters of air per minute.

e3000x

Part # 4553.100

\$1286.38



Swiss Air PAPR

Part # 4700.010

\$1530.90



Optrel Swiss Air, a revolutionary TH3 PAPR system. Choose to pair the swiss air with most welding helmets, a weldcap, or no helmet at all. Take a deep breath, safety never felt so comfortable!

Miller LPR-100 Low Profile Respirator

Miller \$37.19



.99.97% Filtration of airborne particle
.Extreme Low-Profile Mask Design



Miller P100 Replacement Filters

Miller \$13.98

Miller



39

25E

39CHMP

MIG Gloves

Part#	Sizes	Price
39	XS-XL	\$28.90
25E	S-XL	\$13.60
39CHMP	S-2XL	\$19.90



BX9C \$41.90



30WC \$141.50



JF1331-BK \$101.50



Reaching a new level in innovation, the BSX Welding Jacket utilizes a modern design to create a better fitting, better looking, and more comfortable protective garment. Coming in sizes small - 5XL.



.Durable split cowhide
.Protective stand-up corduroy collar
.Kevlar stitching
.30" length
.Sizes small-5XL



.Comfortable 12-ounce FR treated cotton
.Convenient exterior sleeve pocket
.Removable hood
.Covered flaps on pockets
.Sizes M-4XL



35KF

25D-BLK

24K

TIG Gloves

Part#	Sizes	Price
35KF	S-2XL	\$13.90
25D-BLK	S-XL	\$17.00
24K	S-XL	\$23.40



FR Shirts

Part # WF2110

\$59.90



FR Pants

\$55.25

Features & Benefits

Black Stallion FR-treated cotton (100 washes) meets the NFPA 2112 standards for flash fire protection and NFPA 70E standards for arc flash hazard protection. Available in different colors.

.Prices go up with larger sizes

.AR/FR cotton blend provides both flash fire & arc flash hazard protection
.Knee darts offer comfort while bending, crawling, or stooping
.Double pockets on right thigh
.Flat hammer loop
.Available in waist sizes 30" - 48" (even sizes)
.Available in 30" - 36" inseam

.Prices go up with larger sizes

Part#	Sizes	Price
WF2110-PB	S-4XL	\$59.90
WF2110-PK	S-4XL	\$59.90
WF2110-PR	S-4XL	\$59.90
WF2110-NV	S-4XL	\$51.90
WF2110-ST	S-4XL	\$51.90

Part#	Sizes	Price
PF5530-CG	30-48	\$55.25
PF5530-KH	30-48	\$55.25
FD10-30P (Denim)	30-48	\$52.70



280

110

550

Stick Gloves

Part#	Sizes	Price
280	Large	\$16.50
110	S-XL	\$15.90
550	Large	\$17.90



Tools



Milwaukee 4.5" Grinder
Part # 6141-31

\$119.50



DeWalt 4.5" Grinder
Part # DWE402N

\$112.78



Forney 4.5" Grinder
Part # 1905

\$89.99



Metabo 4.5" Grinder
Part # 603624420

\$245.06



Metabo 5" Grinder (Cordless)
Part # 613059830

\$453.47



Metabo 9" Grinder
Part # 606474420

\$700.82



D1 Compact Mag Drill
\$855.00

- . 1-3/8" diameter x 2" depth of cut
- . Ultra compact and light weight only 22 lbs
- . Adjustable cutter guard with built-in chip breaker
- . Through spindle coolant system with removable reservoir
- . Maintenance free rail guide system for long life
- . Safe Magnet circuitry recognizes magnetic holding power
- . Automatic slug ejection system
- . Magnet is 1/3 smaller, lighter and stronger
- . Magnet uses only 50% power when motor isn't under load
- . Designed for easy field service repair
- . All aluminum parts are heat treated for rigidity

Steelmax
The Tools of Tomorrow

BM 25 Portable Plate Beveling Machine



\$3495.00

- . Continuous bevel width adjustment from 0 to 90 degrees
- . Guide set with rollers can be rotated through 360 degrees
- . Precision guide plates ensure accurate and repeatable cutting performance
- . Motor overload protection
- . Variable spindle speed
- . Powerful 2200 w motor
- . 1" (25) mm maximum bevel
- . adjustable grip & handle for ergonomic operation

Steelmax
The Tools of Tomorrow

S 18 LTX 115 Cordless Burnisher
Part # 600154850

\$725.13



- . Compact cordless burnishing machine for grinding, burnishing, brushing and high-gloss polishing of e.g. stainless steel
- . Robust motor for long service life
- . Spindle lock and quick-adjusting flange nut for quick accessory change without tools
- . Quickly adjust the protective panel and side handle without tools
- . Smooth-running, form-fit roller arbor for a uniform finish
- . Battery pack can be swiveled for better working in hard to reach places.
- . Detachable dust filter protects motor from coarse particles
- . Overload protection: protects the motor from overheating
- . Electronic soft start for smooth start-up

metabo



Powermaxx SSD 12 Cordless Impact
Part # 601115890

\$265.56



BS 18 LT BL Q Cordless Drill
Part # 602334890

\$278.50

metabo

metabo

Tools

Double Quick Charger

Part # 627497000



\$253.40
metabo

C- Clamps 6" - 32"



Size	Price
4"	\$24.21
6"	\$37.27
8"	\$50.22
10"	\$73.93

Chipping Hammer E3-WC



ESTWING

\$35.98



MADE IN USA

Framing Hammer E6-24TM



ESTWING

\$56.66

24 OZ

MADE IN USA

Engineer's Hammer



ESTWING

MADE IN USA

\$50.99

Ball Peen Hammer



ESTWING

MADE IN USA

\$39.94

metabo

18V LIHD Battery Packs



Part#	Bat. Ah	Price
625367000	4 Ah	\$168.17
625368000	5.5 Ah	\$243.61
625369000	8 Ah	\$280.31
625549000	10 Ah	\$350.68

F- Clamps 6" - 48"



Size	Price	Size	Price
6"	\$35.57	8"	\$37.21
12"	\$47.01	16"	\$51.27
20"	\$56.67	4"	\$61.24
32"	\$70.98	48"	\$97.52

Adjustable Long Reach

Locking C-Clamps

\$53.00

Part # PGA20S



Strong Hand PGA20S adjustable pliers reach 14" up to 20" in 2" increments.



Adjust-O Magnet



Part#	Pull Force	Price
MSA45	65	\$41.50
MSA46-HD	90	\$78.00
MSA47	75	\$46.50
MSA48-HD	160	\$85.00
MSA53-HD	140	\$85.00

Mini Magnet Squares

6 Pack Part # MS346AK



\$45.50



48" x 48" x 6" Welding Table

Part # 78909515

\$4650.00

- .1/2" Top with 16mm holes
- .2" grid pattern
- 3/8" x 5" struts every 16"
- +/- .015" surface flatness
- Flextur metal tool board panels
- Casters

Flextur



MADE IN USA

Welders/ Plasma

LINCOLN ELECTRIC



Ranger 330MPX
EFI Part # K4779-1

\$9449.00

Premium welder/generator designed with an EFI (Electronic Fuel Injection) engine for an overall enhanced performance with excellent multi-process capability for stick, TIG, MIG, gouging, and pipe applications.

Miller



Trailblazer 330
Diesel (Kubota) w/Excel Power & Wireless Interface Control
Part # 907849002

\$19850.00

Reliable engine-driven welders with unbeatable arc performance, providing the smoothest, most stable arc in the industry. Trailblazer exclusive technologies — advanced Auto-Speed™ and optional Excel™ power — deliver superior runtimes, increase fuel efficiency, and improve engine-driven welder performance. No other compact machine in the 300-amp class delivers more welding power or more auxiliary power with better fuel efficiency and less noise — for productive, profitable, quieter jobsites.

UP TO **52%**
MORE FUEL EFFICIENT
WITH EXCEL POWER

Forney 242 Dual
Part # 11334

\$3299.99



TIG225X AC/DC TIG
\$869.00



PrimeWeld

45 P Pro Plasma
Part # 445

\$2199.99



TIG325X AC/DC TIG
\$1349.00



Pricing include standard torch options, upgrades may be available (price varies)

Power MIG 260
Part # K3520-1

\$3899.00



The POWER MIG 260 welding machine sets the standard for MIG and flux-cored welding in light industrial shop fabrication, maintenance, and repair work

Millermatic 255 MIG
Part # 907734

\$4349.00



Easy to use machine to increase efficiency and productivity for the light manufacturing and fabrication users. Color screen featuring Auto-Set™ Elite and Pulsed MIG.

Millermatic 211 MIG
Part # 907614

\$1935.00



Welds material from 24-gauge to 3/8 in thick in a single pass. Uses 120V or 240V power.

Renegade VOLT ES 200i
Cordless Battery Powered Stick TIG Welder



Renegade VOLT is lightweight and compact to fit where generators can't. The portable welder is 5x smaller and lighter than a typical compact welder-generator. And it can be easily carried in one or two pieces, so you have the freedom to weld absolutely anywhere.

\$3999.00



MIG180
With Spool Gun
\$549.00



Power MIG 215 MPi
Part # K4876-1

\$1999.00



POWER MIG® 215 MPi™ multi-process welder is portable for MIG, stick, TIG, and flux-cored welding.

LN-25 Pro Wire Feed
Part # K2613-5

\$4486.00



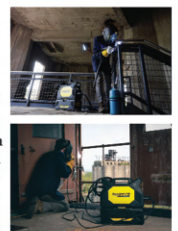
LN-25 PRO series wire feeders are designed to be simple, reliable and easy to service. Whether you are an ironworker, pipeline welder, or weld at a construction site, shipbuilding facility or metal fabrication shop, we have the right semiautomatic wire feeder for you.



Dynasty 300
Complete Part # 951937
\$13845.00

The Dynasty 300 Series is a powerful combination of capability and portability. Weighing only 55 pounds, it can weld up to 3/8" thick material. The AC/DC TIG/Stick power sources feature an energy-efficient inverter design.

- Included**
- . Coolmate 1.3
 - . Runner Cart
 - . Torch Kit (300990)
 - . Coolant
 - . Wireless Foot Control (301580)
 - . 8' Primary Cord



Renegade VOLT is a battery-powered welder as strong as they come - whether you're on the go or in the shop. With cordless power that burns up to 30 electrodes per charge thanks to four swappable 12Ah DEWALT® FLEXVOLT® batteries, and the ability to plug into mains power, no job can outrun the wrath of this Renegade.

CUT60
CNC Compatible
\$699.00



Wire/Rod

FabCO Triple 7 Dual Shield

Comes in wire sizes from .045 to 1/16 and spools from 15lb to 500lb.



Pricing below reflects 33lb spools

Part#	Wire	Price
S246312-029	.045	\$193.05
S246315-029	.052	\$188.43
S246319-029	1/16	\$186.12

MaxalMig 4043

Comes in wire sizes from .035 to 1/16 and packages from 1lb to 22lb.



Pricing below reflects 16lb spools

Part#	Wire	Price
404303504	.035	\$194.08
404304712	3/64	\$160.32
404306212	1/16	\$156.80

ER4043



Pricing below reflects 10lb packs

Size	Price
.030x36	\$450.15
.035x36	\$350.92
3/64x36	\$121.69
1/16x36	\$81.38
3/32x36	\$77.38
1/8x36	\$72.62
5/32x36	\$71.69
3/16x36	\$80.15

Washington Alloy Co. also offers Aluminum TIG in 1100, 4047, 4643, 5183, 5356, 5554, 5556 and in 1lb tubes.

ER70S-6



Pricing below reflects 10lb packs

Size	Price
.030x36	\$102.00
.035x36	\$70.62
.045x36	\$59.69
1/16x36	\$45.08
3/32x36	\$41.08
1/8x36	\$40.31
5/32x36	\$40.31
3/16x36	\$55.69

Washington Alloy Co. also offers Low Alloy TIG in 100S-1, 110S-1, 120S-1, 70S-2, 70S-3, 80S-D2 and in 1lb tubes.

ER308L



Pricing below reflects 10lb packs

Size	Price
.030x36	\$229.02
.035x36	\$161.04
.045x36	\$146.08
1/16x36	\$107.14
3/32x36	\$106.70
1/8x36	\$106.70
5/32x36	\$106.70
3/16x36	\$128.70

Washington Alloy Co. also offers Stainless TIG in 2209, 309L, 310, 312, 316L, 320LR, 409, 410 and in 1lb tubes.



Quantum Arc 6

ER70S-6

Comes in wire sizes from .035 to .052 and spools from 33lb to 950lb.



Pricing below reflects 33lb spools (except S307615-028 60lb)

Part#	Wire	Price
S307608-033	.035	\$178.20
S307612-033	.045	\$169.95
S307615-028	.052	\$298.80

ESAB 7018-1 Prime



Pricing below reflects 4lb packs

Part#	Rod	Price
55042430G0	3/32	\$26.95
55043230G0	1/8	\$25.66
55044030G0	5/32	\$24.52

610 (50lb can)

Part # S129444-035

Comes in rod sizes from 3/32 to 5/32 and packages from 5lb to 50lb.



\$278.00



418 (50lb can)

Part # S119944-035 (7018)

Comes in rod sizes from 3/32 to 1/4 and packages from 5lb to 50lb.



\$250.00



7100 Ultra

Dual Shield .045 x 33lb

Comes in wire sizes from .035 to 1/16 and spools from 10lb to 50lb.



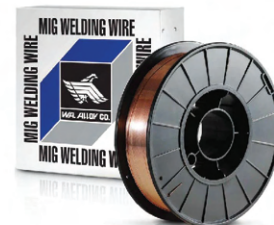
\$191.91



ER70S-6

TC 70S-6 093 .035 x 33lb

Comes in wire sizes from .035 to 1/16 and spools from 2lb to 550lb.



\$92.95



Super Pipe (E6010)



6010P with its fast freeze are recommended for pipe welding and many overhead and vertical welding positions on carbon steels. This deep penetrating rod has a forceful, spray type arc needed for applications such as square edge butt welds, galvanized, greasy, painted or poorly cleaned base metals and many other welding repairs. The weld bead has a thin light slag that produces a relatively flat smooth bead ripple.

Size	Price
3/32 10lb	\$32.33
3/32 5lb	\$17.75
1/8 10lb	\$
1/8 5lb	\$229.02
5/32 10lb	\$229.02
5/32 5lb	\$229.02
3/16 10lb	\$229.02

Pricing reflects 5lb and 10lb packs.



Due to marketplace volatility, prices are subject to change without notice.

Gas Apparatus

TOTE-A-TORCH

Part # 1753

\$499.99



Welds up to 1/2 in (12.7 millimeters) and cuts up to 4 in (101.6 millimeters)
 Provided with built-in check valves for safety.
 Includes 3/16 in (4.76 millimeters by 12-1/2 ft (3.81 meters) T-Grade hose.
 All accessories fit comfortably in a light sturdy plastic tote.
 All tanks are shipped empty per DOT regulations.



Commander HD

Part # 1711

\$569.99



Victor® compatible, 450-series cutting, welding & heating outfit cuts up to 19.05mm (3/4 in) and welds 12.7mm (1/2 in) right out of the box. Ideal for heavy duty fusion welding, braze welding, brazing, heating and hand cutting operations in industrial and general maintenance, fabrication, automotive repair and HVAC.

Commander HD

Part # 1711

\$419.99



Victor® compatible, 250-series cutting Cuts up to 150mm (5.91 in) and welds up to 9mm (0.35 in) with proper tips. Ideal for general maintenance medium-duty fusion welding, braze welding, brazing, heating, hand cutting applications, HVAC and automotive repair.

HD Oxygen Regulator

Part # VH0R-21CS

\$161.45

FLAME TECH



MD Acety Regulator

Part # VMCR-22CS

\$112.41

FLAME TECH



1/4" Twin Hose

Grade T



XTRweld manufactured hoses are designed with welders in mind. They are a lightweight, flexible option for ease of use in daily operation, and meet or exceed today's welding safety standards. Our welding hoses are available from stock in a wide range of sizes for quick delivery, and are offered in both reels

Torch Tips



FLAME TECH Call for Pricing ...
 Cutting tips available for Airco, Harris, Koike, Meco, Oxxweld, Purox, Rego, Flame Tech Scorpion, Smith, and Victor

WYPO Tip Cleaner

\$6.82

WYPO



Flashback Arrestor

Part # 0901-0021 (oxy & fuel)
 (up to size 6)

\$42.81

FLAME TECH



Flashback Arrestor

Part # 0901-0463 (fuel gas)
 Part # 0901-0464 (oxygen)

\$156.73

FLAME TECH



Quick Connect Set



Western Enterprises Torch to Hose Set, Brass Quick Connect Set, Gas Type: Fuel Gas, Oxygen/Inert Gas, Includes: QDB11, QDB12

\$67.85

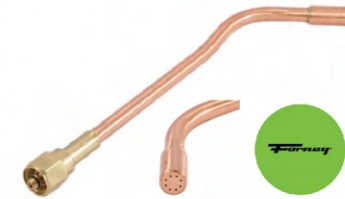


HD Heating Nozzle

Part # 87791 (Victor style)

This size #8 Victor® style rosebud heating nozzle is ideal for heavy-duty oxy-acetylene applications. This nozzle can be used to protect the quality of your welding or cutting.

\$97.99



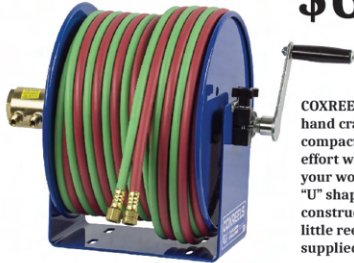
Like your old torch or regulator? Have it rebuilt!

Call us today for more info 860-315-9225

General Supplies

Coxreels 100' 1/4 Hose

Part # CXR112W1100



\$689.30



COXREELS® 100W Series "Welding" hand crank hose reels are lightweight, compact and versatile. Save time and effort while increasing the safety of your work environment. The sturdy "U" shaped frame and all steel construction make this one tough little reel. All listed models are supplied less hose.

Tungsten Packages

Tungsten sold in 10 pack or 3 pack



Available in 7 electrode varieties. Red (2% Thoriated), White (.8% Zirconiated), Gold (1.5% Lanthanated), Grey (2% Ceriated), Green (Pure), Blue (2% Lanthanated), and Chartrreuse LaYZr (Lanthanated, Yttrium, and Zirconiated Blend) Available in sizes from .020 x 7" (0.5x175mm) to 5/32 x 7" (4.0x175mm)



Pricing reflects 10 packs of 3/32

Part #	Size	Price
Red T3327GT2	3/32 x 7"	\$38.50
White T3327GZ	3/32 x 7"	\$39.00
Gold T3327GL	3/32 x 7"	\$38.50
Grey T3327GC2	3/32 x 7"	\$37.50
Green T3327G	3/32 x 7"	\$37.50
Blue T3327GL2	3/32 x 7"	\$38.50
LaYZr T3327GTM	3/32 x 7"	\$38.50



CK17

The CK17, 150 amp, gas cooled torch can be ordered as a rigid, or flex neck, with or without a valve. Thread-On and pencil options also available. Hose length available in 12.5' and 25' Tri-Flex or Super-Flex.



CK17-25-RSF FX
\$141.17



CK20

The CK20/CK25, 250 amp, water cooled torch can be ordered as a rigid, or flex neck, with or without a valve. Pencil / Pencil Flex and extended length options also available. Hose length available in 12.5' and 25' Tri-Flex or Super-Flex.



CK20-25SF FX
\$240.40

Ground Clamp

300 amp Part # ECTWC30



\$24.90



Ground Clamp

250amp Part # ECCR20



\$5.52



Ground Clamp

500 amp Part # ECTWC50



\$41.54



Ground Clamp

500amp Part # ECTWS50



\$15.12



Electrode Holder

300 amp Part # EHBN40



\$14.07



Electrode Holder

300 amp Part # EHL30



\$14.22



Electrode Holder

300 amp Part # EHTW30



\$18.10



Screen Frame

6' x 6'-8' (modular)



\$89.72

Screen

6' x 8'

\$33.48



Jazzy #10

\$40.00



Fupa #12

\$40.00



Moose Knuckle #14

\$22.00



BBW #19

\$23.50



Welding Blanket

6' x 8'



\$46.03

Due to marketplace volatility, prices are subject to change without notice.



WD-40 12oz

\$10.52



Air Tool Lube 15oz

\$9.48



Anti Spatter

\$6.71



Degreaser 20oz

\$13.49



Contact Cleaner

\$18.84



Nozzle Gel



\$6.28



Brakleen 20oz

\$6.08



Knock'er Loose

\$12.33



Rapid Tap

\$10.24

ALL THE BEST BRANDS AVAILABLE AT

WASCO
WASCOINDUSTRIAL.COM GAS AND WELDING SUPPLY



And many, many more....