

R O G A N

An Extraordinary Sense of Touch

Proprietary Fasteners, Hand Hardware and Custom Molding



800-584-5662



Rogan Corporation: Changing the feel of the future

We at Rogan are highly involved with exploring and understanding the sense of touch as a means to enhance human interaction with products of all kinds. Our hands-on ergonomic designs strive to perfect the moment of human contact and compliment form and function.

Pure Touch™ products feature the latest in TPE technology and will pave the way into an endless array of products in the future that not only feel good in your hand but have added safety and aesthetic benefits. Rogan has the technology and expertise today to put these TPE applications to work for you.

What are you going to Pure Touch first? Look around you right now, chances are that you're within arm length of TPE technology. However we're just getting warmed up. Call us today to see what we can add to the list of ergonomically friendly – feel good industrial and consumer products.

Customer driven custom products; Pure Touch molded parts and components that enhance the moment of contact.



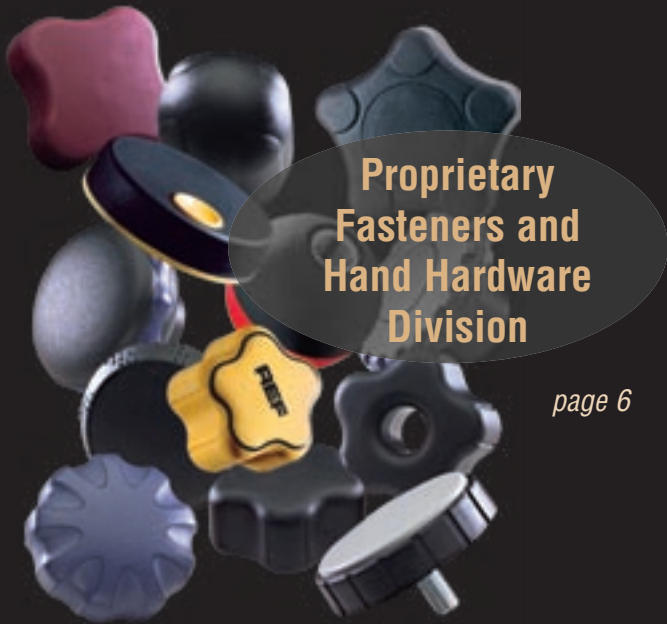
**Two Shot
Custom Molding
Division**

page 2

THE HUMAN TOUCH – A heritage of innovation

Rogan Corporation has defined the concept of corporate innovation to meet customer's needs for over 60 years. Started in 1934, Rogan Corporation grew out of the Great Depression with one mission; to survive.

Having met that goal, Rogan evolved to being a customer driven manufacturer with a global reputation for providing superior two shot molding capabilities. Known as America's Premier Knob Company, the Rogan line of multi-material and multi-functional knob products has provided the perfect foundation for an expanded effort behind custom designed two shot injection molding.



**Proprietary
Fasteners and
Hand Hardware
Division**

page 6

PURE TOUCH™ – The New Standard

It happens in an instant. It happens so quickly that it is hard to define the exact instant when our sense of touch registers pleasure or pain, control or panic, effort or relief.

It is this instant, this exact moment that Rogan Pure Touch is designed for.

Rogan Pure Touch is the New Standard for two shot injection molding and is the foundation for our Proprietary Fasteners and Hand Hardware Division. Rogan Pure Touch products have been in the forefront of innovative product designs to meet the consumer needs for more and more ergonomically friendly applications.

Rogan Pure Touch injection molding provides unmatched control combined with sturdy durable performance in custom designed products for your customers.



**Design
Standards by Rogan:
Distribution
Division**

page 23

Design Standards by Rogan

Design Standards by Rogan is a distributor of the best hardware and design components from the world's best manufacturers.

To meet the needs of product engineers and design engineers, Design Standards by Rogan is able to ship small quantities immediately for next day delivery. Credit card payment and in-stock inventory makes this the perfect resource for creative design solutions.

Multi Materials

Multi Colors &

Textures

The applications for thermoplastic elastomers (TPE) have literally exploded over recent years. Rogan has over 15 years experience in custom design of two shot molding products. Their expertise reflects the research and investment in time, equipment and ideas to provide the very best products to meet each customer's needs.

Rogan Pure Touch injection molding provides unmatched control combined with sturdy durable performance in custom designed products for your customers.

The Rogan Team can easily modify existing tooling to meet your specific needs. If appropriate, we can develop a custom piece that will truly be unique. With our design expertise, we can help you enhance the appearance and operation of your product to differentiate your offering from those of your competitors. We are experts in this field so you don't have to be diverted from your main purpose. We can guide you through the product selection process to give you the best solution for your needs – balancing aesthetics, feel and cost. We would welcome the opportunity to show you what we can do for you.

Color

Unlimited color matches available
One part with two colors molded together without assembly labor

Touch

Soft thermoplastic outer surface
High fashion ergonomics

Let Us Build You a Sample

Our application engineers will work with you to create a custom product sample to fit your needs and specific requirements.

Superior Structural Performance

Thicker wall sections mean stronger parts
Solid second surfaces meet F.D.A.
Application Specifications

Permanent Markings

Decorative copy or corporate logo
Symbols or arrows



Manufacturing . . .

THE PHILOSOPHY:

The customer comes first, second and last at Rogan. Rogan utilizes the world's best technology to meet today's needs and anticipate tomorrow's.

A culture of continuous improvement and innovation insures state-of-the-art-manufacturing capabilities.

THE EXPERTISE:

Over 15 years of two shot injection molding experience.

Committed employees with an average of 10 plus years of employment and 14.8 years of molding experience.

Design specialists on staff to maximize benefits of Rogan expertise and proprietary technology for each customer.

Manual molding and samples available upon request for prototype development.

Experience

Innovation

Technology



Multi Material and Two Color Molding Process

THE MACHINERY:

8 custom two shot precision injection molding machines.

Proprietary technology allows for multi-material and multi-color precision molding.

16 molding cavity capacity and quick change mold changeover.

Ultimate in versatility – colors / shafts / inserts / markings.

Automatic overhead feed & silos storage up to 80,000 pounds of raw material.

3 Shift, 24-hour operations with added capacity upon demand.

Cellular manufacturing environment includes thermal insert and stud bonding, customization of studs and inserts, staging, packaging and shipping.

THE QUALITY:

99.4% approval ratings

Automated multi material, multi color, proprietary two shot molding equipment produces Pure Touch™ products.

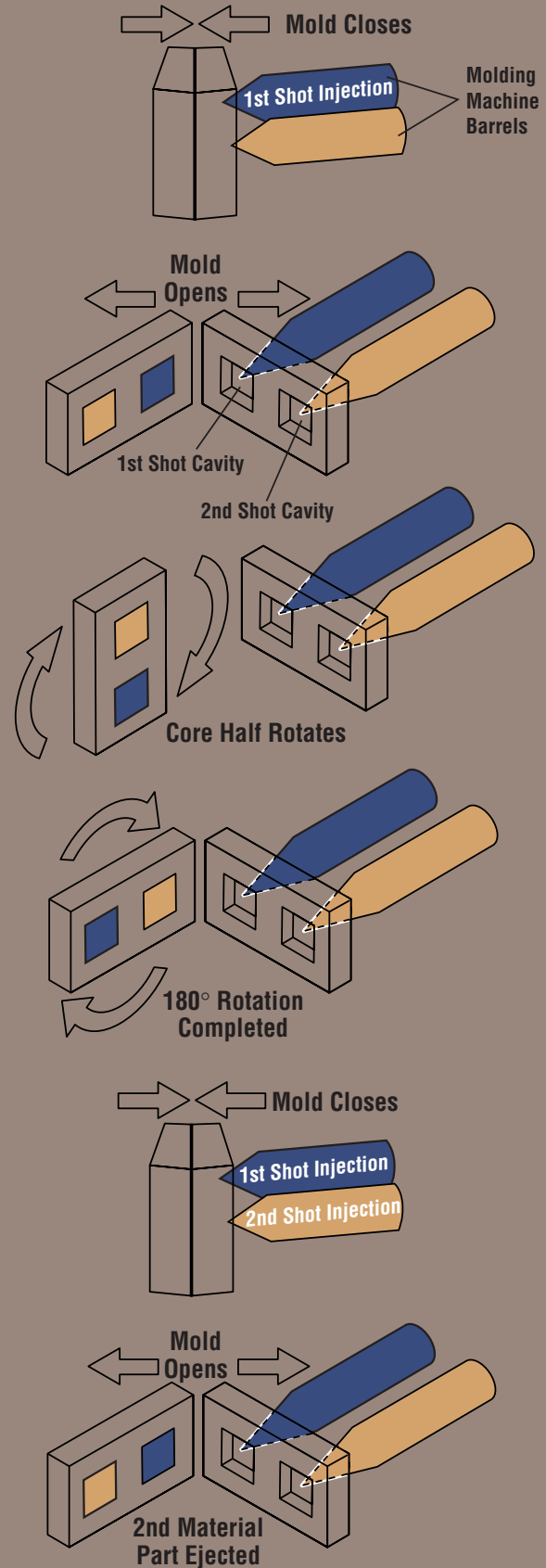
State-of-the-art, sophisticated molding machines and robotic auxiliary equipment insure peak efficiency and quality.

Quality monitored by full time Constant Improvement Coordinator and staff of facilitators.

Quality Policy Manual available to all customers.

Rogan quality standards require that products provide best options to customers for:

- Aesthetics
- Ergonomics
- Functionality



*Proprietary Technology for
Custom Designs*

Rogan Pure Touch Thermoplastic Elastomers (TPE) technology is designed to impact and improve three areas of product design:

AESTHETICS: Pure Touch products bring an element of style and quality to any finished product. For manufacturers who desire a premium look and feel to their finished product, Pure Touch products have been proven to enhance overall quality and image perceptions. The ability to customize colors and design means that the products will fit into or help create a signature look for any manufacturer.

ERGONOMICS: Feel the future of industrial and consumer feel good products when you touch the results of our Pure Touch TPE technology. Manufacturer responsiveness to consumer demand has resulted in an explosion of products that simply feel good in your hand. Rogan has been producing these feel good products for 15 years. The outer surface is like a soft supple skin wrapped around the hard durable body of the product. This results in the perfect balance of control and durability.

FUNCTIONALITY: This combination of improved form and function is the ultimate improvement to functionality. Products that reflect the style, quality and benefits of custom design are guaranteed to look better and work harder no matter what your end product.

PURE TOUCH™ PURE ROGAN

*Feel the future . . .
Custom Pure Touch products*

Feel good products will dominate the 21st Century

Largest selection of TPE fasteners in the world!

Customization of threads, studs, inserts etc.

metric / English
lengths / depths
stainless steel / brass

*Old World craftsmanship combined with
21st Century technology*

In-house tool room
High speeds thermal induction assembly



Rogan Products

are right at home in
every environment

Home Work

Custom Wheel developed through Rogan and Bissel partnership and has been added to Rogan product line.

Yard Work

Signature color enhances image and identity. Rogan worked closely with a leader in the lawn and garden industry to develop exclusive color as a signature element. High impact color and superior clamping functionality improves ergonomics and image.

Hard Work

Rogan Products are unmatched in standing up to the elements with superior performance.



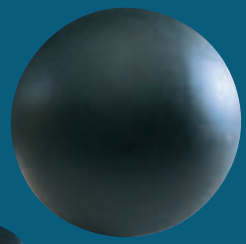
TABLE OF CONTENTS

Proprietary Fasteners and Hand Hardware

“LP” Clamp Knob Series10



“BK” Ball Knob Series11



“FL” Clamp Knob Series12



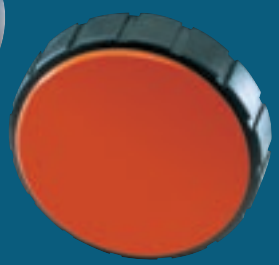
“FL-H” Clamp Knob Series13



“HP” Clamp Knob Series14



“WH” Clamp Knob Series15



“WK” Clamp Knob Series16



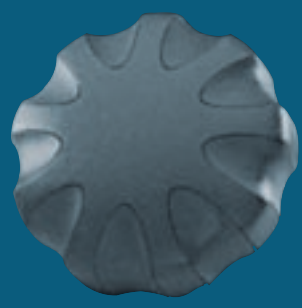
“EDSR” Clamp Knob Series17



“JVH” Clamp Knob Series18



“AJK” Clamp Knob Series19



“AXL” Clamp Lever Series20-21

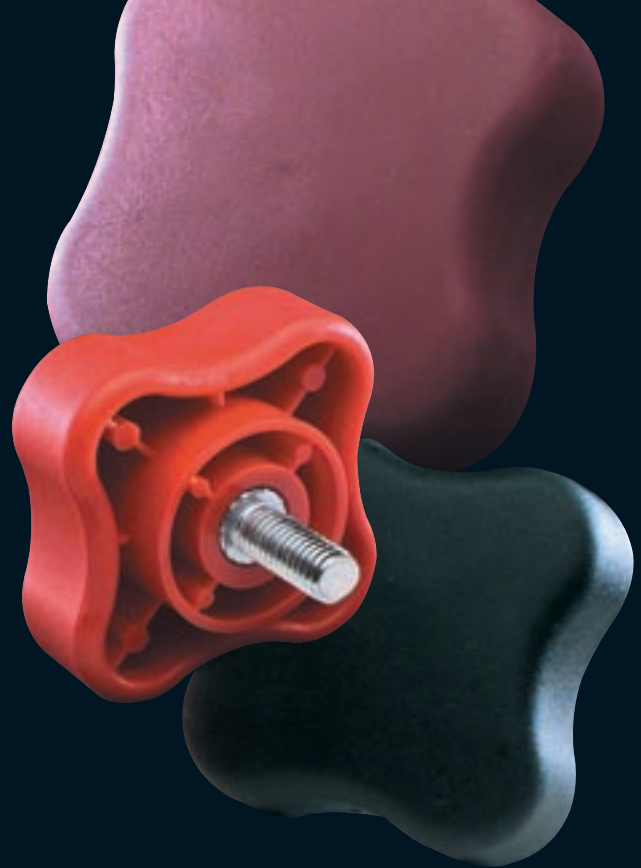
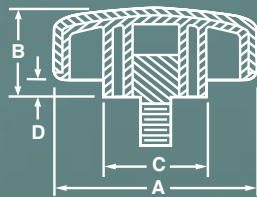
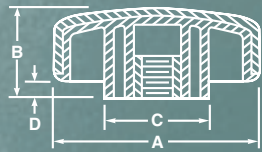


“JLR” Clamp Knob Series22



PURE TOUCH

LP clamp knob series



The first full series of Pure Touch™ clamping knobs designed and tooled by us to create a proprietary line was the “LP” series. Ergonomics and the science of feel guided all our decisions for this series. Grab testing had us go with a four lobe design instead of playing it safe with five lobes. Our testers proved that when a fast grip was required, the “LP” design allowed more hand sizes to fold around the gripping perimeter faster than the five lobe design.

The thermoplastic elastomer Pure Touch™ first surface gives the “LP” series a feel, unique and friendly to the flesh. We knew we had a winner in our Pure Touch™ concept of two material molded hand control hardware as this series was our first Pure Touch™ product line to be awarded a 1 million piece order by an international manufacturer of consumer lawn and garden items. The “LP’s” subtle but functional design allows for a second color to be added to the base of the gripping surface. Again the Pure Touch™ concept allows design conscious companies to economically make a functional commodity type product into an exciting statement piece.

Colors? Yes (Standards and specials) – Markings? Yes (pad printing) – English and metric threads? Yes – Stud lengths? Yes (Available as standards or special orders).

Dimensions in (mm)

Part No.	A	B	C	D
PT-CL-LP-J1	1.40 (35.56)	.68 (17.27)	.56 (14.22)	.18 (4.57)
PT-CL-LP-J2	1.75 (44.45)	.75 (19.05)	.68 (17.27)	.125 (3.17)
PT-CL-LP-J3	1.99 (50.55)	.86 (21.84)	.91 (23.11)	.16 (4.06)
PT-CL-LP-1	2.48 (62.99)	1.09 (27.69)	1.25 (31.75)	.18 (4.57)
PT-CL-LP-3	3.00 (76.20)	1.30 (33.02)	1.50 (38.10)	.22 (5.59)

XX = ±.010"

Inserts and Studs

Part No.	10-32	1/4-20	5/16-18	3/8-16	1/2-13	M6	M8	M10	M12
PT-CL-LP-J1	x	x	x			x	x		
PT-CL-LP-J2	x	x	x	x		x	x	x	
PT-CL-LP-J3	x	x	x	x	x	x	x	x	
PT-CL-LP-1		x	x	x	x	x	x	x	x
PT-CL-LP-3		x	x	x	x	x	x	x	x

Add -st to part # to indicate stud selection. Popular stud lengths are more readily available.

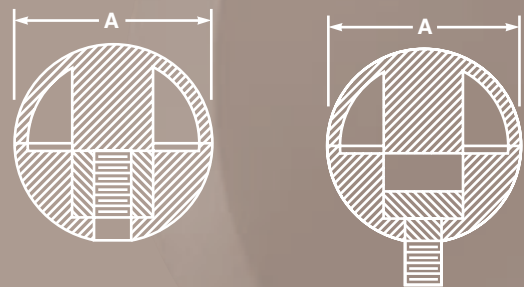


More ball knobs have been manufactured in the history of mankind than any other control hardware. In fact ball knobs are one of the many mundane foundations of the industrial revolution that get no or little respect, yet there will always be a need for them. The ball knob which has evolved from wood, metal, hard elastomer and hard plastic now leaps over centuries of sameness by automatically injection molding an outer layer of thermoplastic elastomer for the Pure Touch™ feel. Our snap together mechanical design, use of standardized threaded inserts and studs, and state of the art molding equipment means you don't have to pay the high cost for a elastomer molded ball knob. For designers and companies that want to differentiate their products with design and ergonomic distinction, the Pure Touch™ ball knob series of 5 sizes will please your customers when you upgrade them from a commodity ball knob to the ball knob for the 21st Century.

Colors? Yes (Standards and specials) – Markings? Yes (pad printing) – English and metric threads? Yes – Stud lengths? Yes (Available as standards or special orders).

PURE TOUCH

BK clamp knob series



Part No.	Dimensions in (mm)	
	A	
BK-2	.75	(19.05)
BK-5	1.00	(25.40)
BK-20	1.38	(35.05)
BK-30	1.63	(41.4)
BK-40	1.88	(47.75)

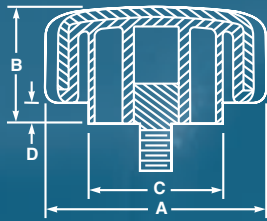
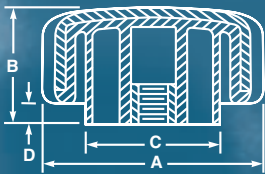
XX = ±.010"

Part No.	Inserts and Studs								
	10-32	1/4-20	5/16-18	3/8-16	1/2-13	M6	M8	M10	M12
BK-2	x								
BK-5	x								
BK-20	x	x	x			x	x		
BK-30	x	x	x			x	x		
BK-40			x	x	x		x	x	x

Add -st to part # to indicate stud selection. Popular stud lengths are more readily available.

PURE TOUCH

FL clamp knob series



Dimensions in (mm)

Part No.	A	B	C	D
PT-CL-FL-40	1.52 (38.61)	1.09 (27.69)	.69 (17.45)	.18 (4.57)
PT-CL-FL-50	1.91 (48.51)	1.09 (27.69)	.93 (23.50)	.17 (4.32)
PT-CL-FL-60	2.26 (57.40)	1.07 (27.18)	1.25 (31.75)	.165 (4.19)

XX = ±.010"

Inserts and Studs

Part No.	1/4-20	5/16-18	3/8-16	1/2-13	M6	M8	M10	M12
PT-CL-FL-40	x	x	x		x	x	x	
PT-CL-FL-50	x	x	x	x	x	x	x	x
PT-CL-FL-60	x	x	x	x	x	x	x	x

Add -st to part # to indicate stud selection. Popular stud lengths are more readily available.

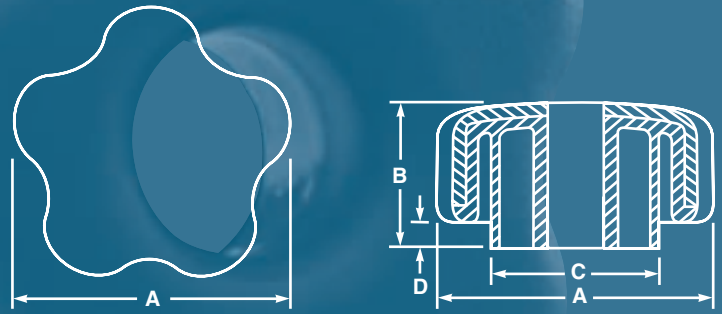
5 fingers ... 5 lobes ... 5 fingers ... 5 lobes; GET IT? Of course you do. This is Darwinian ergonomic engineering. The fingers of the hand attach onto the "FL" series like magnetism because of man and woman's evolution into having a hand that works with 4 fingers and a thumb. Our 5 lobe, "FL" series feels wonderful because of this. With our Pure Touch™ thermoplastic elastomer outer surface greeting your customer's palms and fingers and our subtle grooves providing style and thumb traction this is one of our can't miss products. This means you will be using a fastener that will enhance your project's overall appearance and help you sell your product. When was the last time a fastener did that for you?



Pure Touch™ 5-lobe clamp knobs, one of the world's most popular styles, are now available with a thru hole (-H) option. Molded of Pure Touch™ Thermoplastic Elastomer (TPE), the series has the advantage of being user friendly with its soft, touch me feel. The English and metric threaded insert are high speed thermally induction assembled to insure competitive pricing. Tee 5-lobe thru hole knob incorporates mother nature's ultimate ergonomic design, is smooth to the touch, functional and tested to assure torque and pull high quality performance.

PURE TOUCH

FL-H clamp knob series



Part No.	Dimensions in (mm)			
	A	B	C	D
PT-CL-FL-H-40	1.52 (38.61)	1.09 (27.69)	.69 (17.45)	.18 (4.57)
PT-CL-FL-H-50	1.91 (48.51)	1.09 (27.69)	.93 (23.50)	.17 (4.32)
PT-CL-FL-H-60	2.26 (57.40)	1.07 (27.18)	1.25 (31.75)	.165 (4.19)

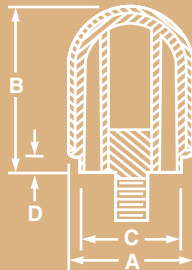
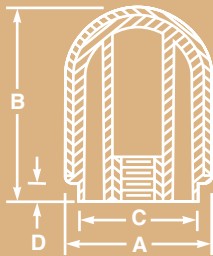
XX = ±.010"

Part No.	Inserts Only							
	1/4-20	5/16-18	3/8-16	1/2-13	M6	M8	M10	M12
PT-CL-FL-40	x	x	x		x	x	x	
PT-CL-FL-50	x	x	x	x	x	x	x	x
PT-CL-FL-60	x	x	x	x	x	x	x	x

Add -st to part # to indicate stud selection. Popular stud lengths are more readily available.

PURE TOUCH

HP clamp knob series



We designed the “HP” series to be just plain unlike any other clamp knob style in the world. Our hands do so many different functions in controlling mechanical operations in life that no one style or shape of clamp knob can meet all needs. This is another one of our designs that is available to the design conscious. It tells the world that you aren’t a design lemming and care about every detail on your product.

The “HP” series is a key component of one of the most advanced and award winning high-end ergonomic office chairs in the world. We’ve been commended by our customer’s designers for our design contribution to their chair even though the “HP” clamp knob is under the seat. But, it feels good to the flesh and functions flawlessly as adjustment control hardware. The Pure Touch™ soft thermo-plastic elastomer outer surface can be colored and marked per your needs. Available with English and metric threads. Stud lengths available as standards and special orders.

Dimensions in (mm)

Part No.	A	B	C	D
PT-CL-HP-1	1.68 (42.67)	2.18 (55.37)	1.34 (34.04)	.20 (5.08)
PT-CL-HP-3	1.87 (47.50)	2.44 (61.98)	1.50 (38.10)	.22 (5.59)

XX = ±.010"

Inserts and Studs

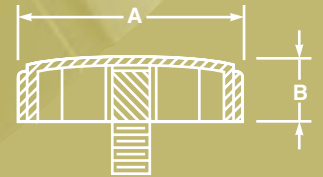
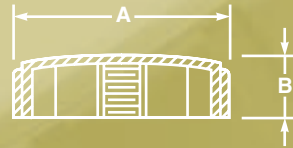
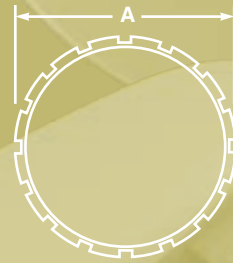
Part No.	1/4-20	5/16-18	3/8-16	1/2-13	M6	M8	M10	M12
PT-CL-HP-1	X	X	X	X	X	X	X	X
PT-CL-HP-3	X	X	X	X	X	X	X	X

Add -st to part # to indicate stud selection. Popular stud lengths are more readily available.



The "WH" style clamping hub is only .67 inches / 17.02 mm in height and is excellent for space limited applications. This Plain Jane style knob is really a Cinderella in disguise. Because the first surface is textured polypropylene, color combinations can be as striking and dramatic as your imagination. The large first surface also allows pad printed marking and logos to stand out. This hard working, basic clamp knob was the first by us to incorporate non-marring soft Pure Touch™ thermo-plastic elastomer for use by our customer, a billion dollar floor and rug cleaning product corporation. Their application also required us to mold the "WH" with special order colors. Available in English or metric threads and standard or special order stud lengths.

PURE TOUCH
WH clamp knob series



Part No.	Dimensions in (mm)	
	A	B
PT-CL-WH	2.26 (57.40)	.67 (17.02)

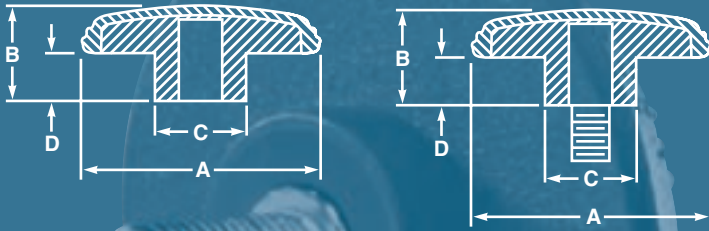
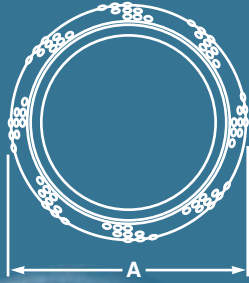
XX = ±.010"

Part No.	Inserts and Studs						
	10-32	1/4-20	5/16-18	3/8-16	M6	M8	M10
PT-CL-WH	X	X	X	X	X	X	X

Add -st to part # to indicate stud selection. Popular stud lengths are more readily available.

PURE TOUCH

WK clamp knob series



The "WK" series was engineered to use our two-material molding process (see page 5) to produce a thick-sectioned automatically molded thermoplastic clamping knob previously only available by the slow cycled thermoset molding process. There are no core-outs or rib on the second surface of the "WK" clamping knobs. This means solid plastic with no areas for contaminants to accumulate. Low profiled, this simple dome-styled clamp knob became ergonomically relevant when our designers added diagonal segments of dimples to its outside perimeter. Thus our Pure Touch™ thermoplastic elastomer outer layer feels good to the flesh, yet provides a light friction for the hand's control functions. Our manufacturing and molding process make the "WK" one of our most competitive lines in quantity. Standard and special order colors, markings, English and metric threads, stud materials, and stud lengths available. Can be pad printed too.

Dimensions in (mm)

Part No.	A	B	C	D
PT-CL-WK-25	.98 (24.89)	.40 (10.16)	.50 (12.70)	.20 (5.08)
PT-CL-WK-32	1.26 (32.00)	.52 (13.20)	.79 (20.06)	.26 (6.60)
PT-CL-WK-40	1.57 (39.87)	.65 (16.51)	.75 (19.05)	.33 (8.38)
PT-CL-WK-50	1.96 (49.78)	.81 (20.57)	.76 (19.30)	.41 (10.41)

XX = ±.010"

Inserts and Studs

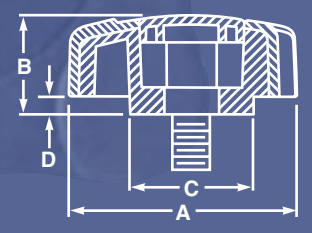
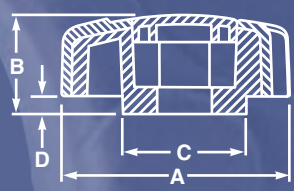
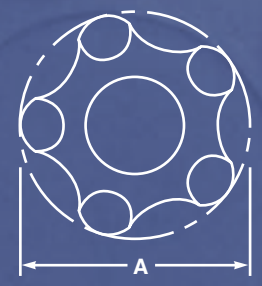
Part No.	10-32	1/4-20	5/16-18	3/8-16	M6	M8	M10
PT-CL-WK-25	x	x			x		
PT-CL-WK-32		x	x	x	x	x	x
PT-CL-WK-40		x	x	x	x	x	x
PT-CL-WK-50		x	x	x	x	x	x

Add -st to part # to indicate stud selection. Popular stud lengths are more readily available.



PURE TOUCH

EDSR clamp knob series



Named in honor of our co-founder, Ed Rogan SR. (1907 - 1991), the "EDSR" clamping knob series is the most pragmatic Pure Touch™ clamp knob series we offer. Simple in concept, the "EDSR" consists of a soft outer surface two-shot molded knob body and a polypropylene cap. The "EDSR" converts into an attractive Pure Touch™ clamp knob with the installation of a standard English or metric hex nut or hex bolt of any length. The cap snaps in or out to secure the nut or bolt. Note: Rogan Corporation states there are no stripping torque and no push/pull specifications warranties for the "EDSR" series. The buyer must test their intended application personally to determine safety applicability and personally takes responsibility for their decision to use this product.

The "EDSR" clamping knob series is widely available in small quantity lot sizes from distributors throughout the world. Standard and special order colors and markings are available. The "EDSR" is simplicity with a more human touch, a concept you need and can provide to your designs.

Part No.	Dimensions in (mm)			
	A	B	C	D
PT-CL-EDSR-34	1.34 (34.01)	.29 (7.39)	.71 (18.08)	.18 (4.57)
PT-CL-EDSR-38	1.50 (38.00)	.68 (17.35)	.79 (20.12)	.18 (4.57)
PT-CL-EDSR-43	1.69 (43.00)	.83 (21.13)	.96 (24.38)	.26 (6.50)
PT-CL-EDSR-53	2.09 (53.01)	.83 (21.18)	1.05 (26.67)	.18 (4.57)

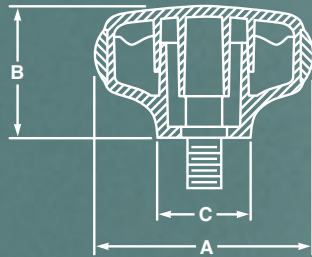
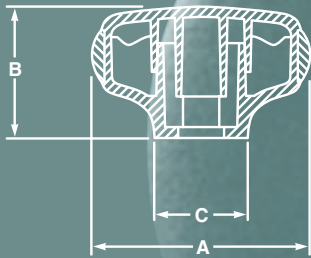
XX = ±.010"

Part No.	Nuts and Bolts							
	1/4-20	5/16-18	3/8-16	1/2-13	M6	M8	M10	M12
PT-CL-EDSR-34	x				x			
PT-CL-EDSR-38	x	x			x	x		
PT-CL-EDSR-43	x	x	x		x	x	x	
PT-CL-EDSR-53		x	x	x		x	x	x

Add -st to part # to indicate stud selection. Popular stud lengths are more readily available.

PURE TOUCH

JVH clamp knob series



Dimensions in (mm)

Part No.	A	B	C
PT-CL-JVH-32	1.26 (31.65)	.71 (18.06)	.71 (18.06)
PT-CL-JVH-42	1.65 (42.01)	1.10 (27.94)	.71 (18.06)
PT-CL-JVH-62	2.44 (62.05)	1.34 (34.04)	.83 (21.11)

XX = ±.010"

Inserts and Studs

Part No.	10-32	1/4-20	5/16-18	3/8-16	1/2-13	M6	M8	M10	M12
PT-CL-JVH-32	x	x					x		
PT-CL-JVH-42		x	x	x		x	x	x	
PT-CL-JVH-62			x	x	x		x	x	x

Add -st to part # to indicate stud selection. Popular stud lengths are more readily available.

The "JVH" clamping knob series is magic in your hands. Our mold designer, tool room manager, mold makers, molding manager and plant manager spent long hours engineering this series. Every brain cell available was needed for us to figure out how to competitively manufacture the "JVH". Our team succeeded by configuring a three part assembly: top half, bottom half, and insert or stud.

Our thermoplastic elastomer Pure Touch™ soft plastic is strategically situated so that the hand sends the brain a very simple message: the "JVH" feels magnificent. The subtle polypropylene indents can explode with eceletic color as a special order or standard color option. The bottom half is psuedo-solid with no core-outs or ribs present. This provides assurance for designers of health and food industry equipment that undesirable elements won't find a haven in your designs using the "JVH" clamp knob series.

The "JVH" series has to be the best because it is named in honor of company friend and advisor, John von Holdt (1920-1998). John was a giant in the plastics world. A tooling and plastics molding genius, John held 55 U.S. patents and hundreds of foreign patents for molds and plastic product designs. He was a three-time winner of the prestigious Bachner Award for plastic product design. an elected member to the Plastics Hall of Fame, and won the Lifetime Industry Achievement Award presented by the Plastics Academy. In the early 60's, John von Holdt led Rogan Corporation into the world of injection molded products. This was one of the 8 key events in the history of the company.

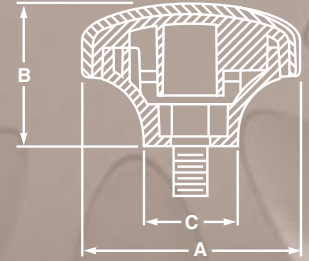
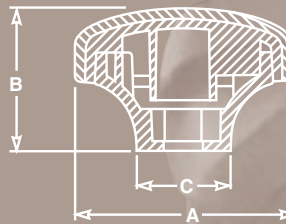


PURE TOUCH

AJK clamp knob series



The "AJK" series is cunningly deceptive. Its attributes are a seductive enhancement for any mechanical design application. The soft Pure Touch™ thermoplastic elastomer perimeter does all the work of providing a positive stimulus that feels so superior to solid one piece clamping fasteners. Yet the "AJK" allows the designer to texturize, color, and mark a mostly polypropylene clamp knob that portrays ergonomic ingenuity, simplicity, and strength to its intended usage. The second surface is "faux" solid meaning no ribs or core-outs are visible. The fastening system can be English or metric. Standard or special order stud lengths and colors.



Dimensions in (mm)

Part No.	A	B	C
PT-CL-AJK-32	1.26 (31.98)	.80 (20.35)	.711 (18.06)
PT-CL-AJK-42	1.65 (42.01)	1.10 (27.94)	.711 (18.06)
PT-CL-AJK-62	2.44 (61.98)	1.41 (35.76)	.832 (21.13)

XX = ±.010"

Nuts and Bolts

Part No.	1/4-20	5/16-18	3/8-16	1/2-13	M6	M8	M10	M12
PT-CL-AJK-32	x				x			
PT-CL-AJK-42	x	x	x		x	x	x	
PT-CL-AJK-62		x	x	x		x	x	x

Add -st to part # to indicate stud selection. Popular stud lengths are more readily available.

PURE TOUCH

AXL clamp lever series



TOP SECRET

Introduction to be made at the Hannover, Germany Industrial Fair, April 2000!

Yes, we succumbed to Millenium Mania too. Rogan Corporation considers the Pure Touch™ adjustable clamping lever one of its greatest organizational design and manufacturing achievements ever. This hand controlled lever eliminates the need for adjustment tools and equipment thus allowing operators to make instant installations and changes. The result is set-up and cycle time reductions. Speed means more efficiency, essential in the global economy.

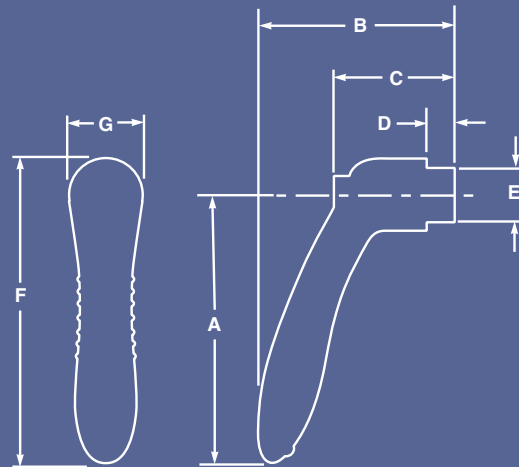
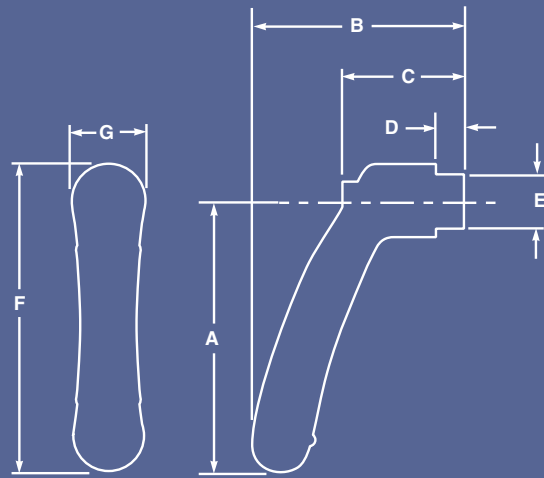
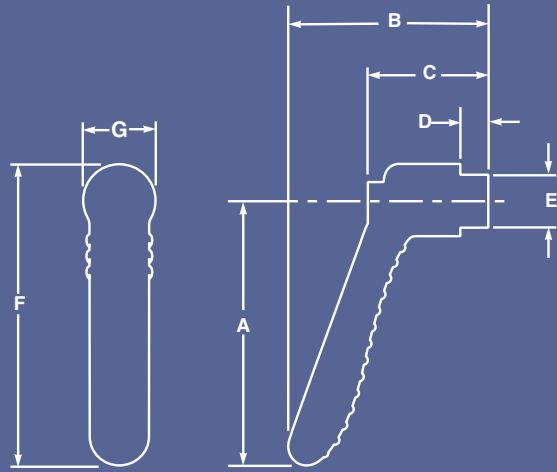
The PT-adjustable clamp lever is activated by pulling up on the handle to disengage the torque action and releasing the handle re-engages it for tightening and loosening. Thus you can make multi-position adjustments with and without load. While simple to use, this is a product of sophisticated engineering and is available with the following options: custom colors; metric and English threads; stainless steel hardware; adjustment screw choices including hex heads for security applications.

We saved the best for last. Our contributions to Millenium introductions of new products will be the greatest looking and feeling products in the hand controlled hardware category you will ever purchase and use. Ergonomically designed by the prestigious industrial design firm of Herbst, Lazar and Bell of Chicago, winner of many international design awards, the Pure Touch™ adjustable clamp lever is two-shot molded of thermoplastic elastomer that provides maximum comfort in sustained daily use and a polypropylene core that withstood grueling destructive torque testing with more torque than comparable one-shot thermoplast molded crank levers.



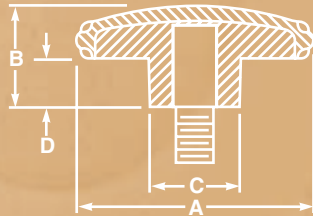
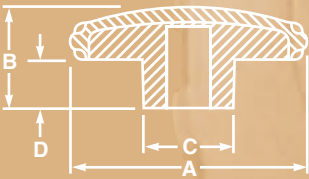
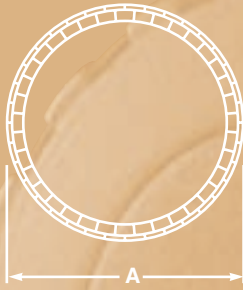
PURE TOUCH

AXL clamp lever series



PURE TOUCH

JLR clamp knob series



Our sister division, Design Standards by Rogan (see next page), focuses on companies that “understand the right and left brain aspects of design engineering” and think outside the lines. We demand that our industrial designers create a clamp knob fastener that would passionately appeal to this audience. We believe our globally renowned and awarded design firm of Herbst, Lazar and Bell did exactly that when they conceived the “JLR” series for you to consider for your work.

The feel and look of the “JLR” comes about by having the mold create a gripping surface of our Pure Touch™ thermoplastic elastomer plastic that is a tapered, undulating contour of micro-cylinders. It really, really works. We gambled that this “on the edge” styling would satisfy the leaders of the design world and give them fasteners that upstyle their designs. This is it! We will be entering this series in design competitions around the world. We predict success.

Joseph L. Roschman (1911-Present) is the only living person we have ever honored by naming a Rogan product line after a salesman, advisor, Board of Directors Member, and a friend to the whole Rogan family. Joe’s personality is exemplified by this series. Joe had a career of unending success. He didn’t look like a mover and a shaker, until you met him. Then you realized you were dealing with someone special, someone dynamic, someone who made things happen and made you feel good doing so. Joe, thank you, this “JLR” is named after you.

Dimensions in (mm)

Part No.	A	B	C	D
PT-CL-JLR-25	.98 (24.89)	.40 (10.16)	.50 (12.70)	.20 (5.08)
PT-CL-JLR-32	1.26 (32.00)	.52 (13.20)	.79 (20.06)	.26 (6.60)
PT-CL-JLR-40	1.57 (39.87)	.65 (16.51)	.75 (19.05)	.33 (8.38)
PT-CL-JLR-50	1.96 (49.78)	.81 (20.57)	.76 (19.30)	.41 (10.41)

XX = ±.010"

Inserts and Studs

Part No.	10-32	1/4-20	5/16-18	3/8-16	M6	M8	M10
PT-CL-JLR-25	x	x			x		
PT-CL-JLR-32		x	x	x	x	x	x
PT-CL-JLR-40		x	x	x	x	x	x
PT-CL-JLR-50		x	x	x	x	x	x

Add -st to part # to indicate stud selection. Popular stud lengths are more readily available.

History of Rogan Corporation

1934

Established in 1934 by the Rogan Brothers: Ed Sr., Nick and Jim.

1937

Invented hot stamp marking on plastic.

1939

The United States only approved custom hot stamp marking contractor from 1939 - 1944.

1945

Implemented custom molding capabilities.

Plastic Molding Pioneers: Advertised "Make plans now . . . for the coming plastic era/consult Rogan" from 1945 - 1950.

1950

Custom molder to the appliance and connector industries from 1950 - 1960.

19?

Charter member Society of the Plastic Industries.

1960

Insert molder to the world of instrument and control electronics from 1960 - present.

1961

Pioneer in assembling decorative aluminum trim to plastic.

1967

Automated insert injection molding capabilities.

1976

Insert molder of threaded fasteners for clamping applications.

1984

Automated two material/two-shot injection molding capabilities.

1993

Named "Inc. Magazines" Employer of the Year.

1994

Gas assist molding pioneer.

1997

The 50 millionth part was shipped.

1998

Winner of the Arthur Andersen Enterprise Award for Best Business PracticesSM.

1999

Celebrated our 65th Anniversary.

Awarded State of Illinois grant for recycling program.



A PERSONAL TOUCH –

Shared responsibility & rewards

Rogan team members are challenged by the corporate culture of Constant Improvement. All members are consulted on improvements and encouraged to submit ideas and share their points of view.

Rogan has over 40 years of history as a Gainsharing and Profit Sharing company where members see and feel the results of their involvement.

Rogan Corporation has had the honor of being named the recipient of the prestigious Arthur Anderson Enterprise Award for Best Business Practices and Employer of the Year by Inc. magazine.

Rogan's manufacturing facilities and management offices are located in Northbrook, IL, a northern suburb of Chicago, just 25 minutes from O'Hare airport. The 42,500 square foot factory is filled with over 100 team members, fully automated specialized machinery and the ability to custom design any products for any number of industries and applications. We welcome your visit to our facility and feel sure that during your visit you will get a first hand sense of the positive environment which ultimately results in even more productivity for each of our customers.



Rogan
Corporation

ENTERPRISISE
AWARD

FOR
MOTIVATING AND
RETAINING EMPLOYEES

800-584-5662