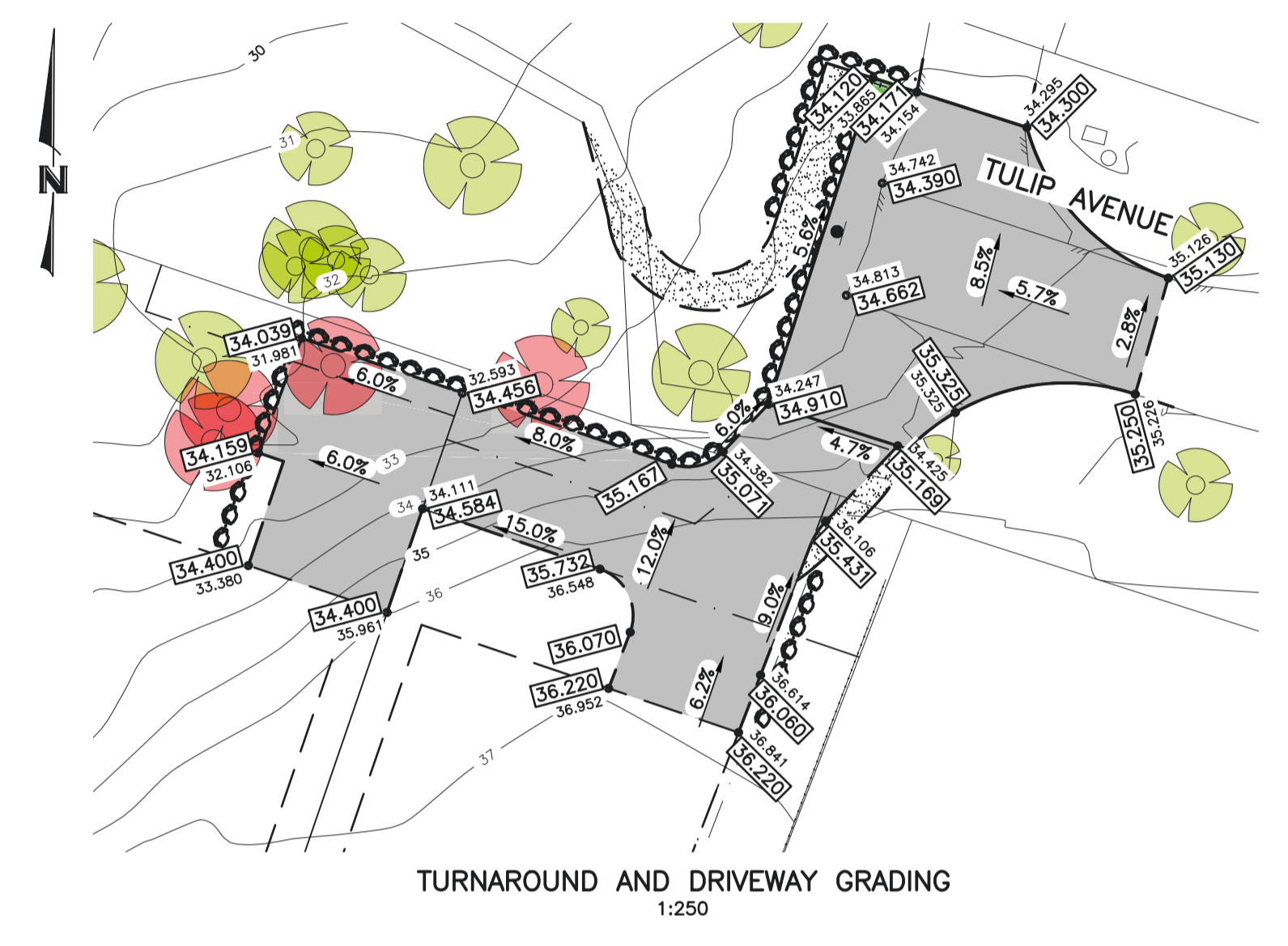
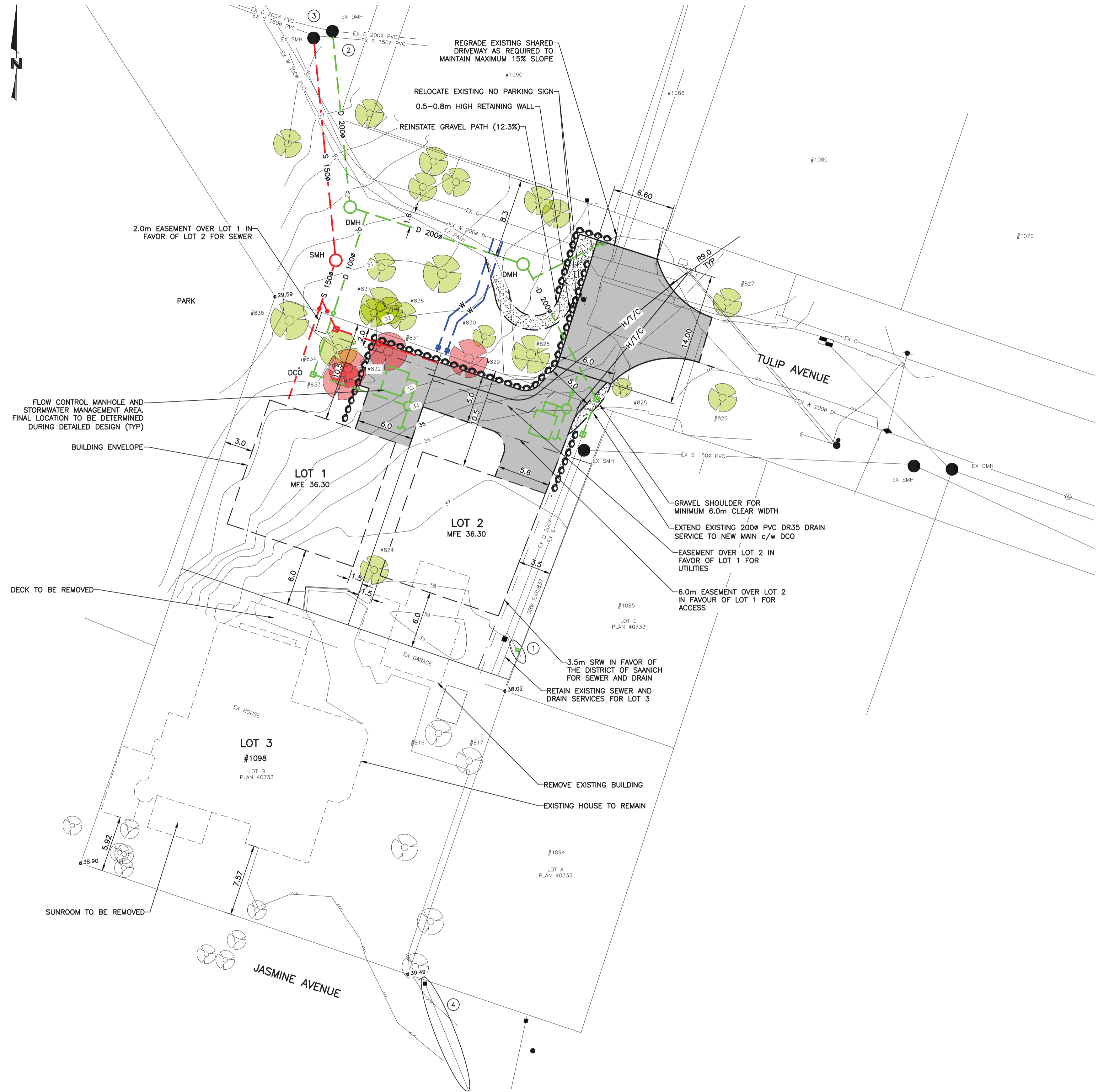
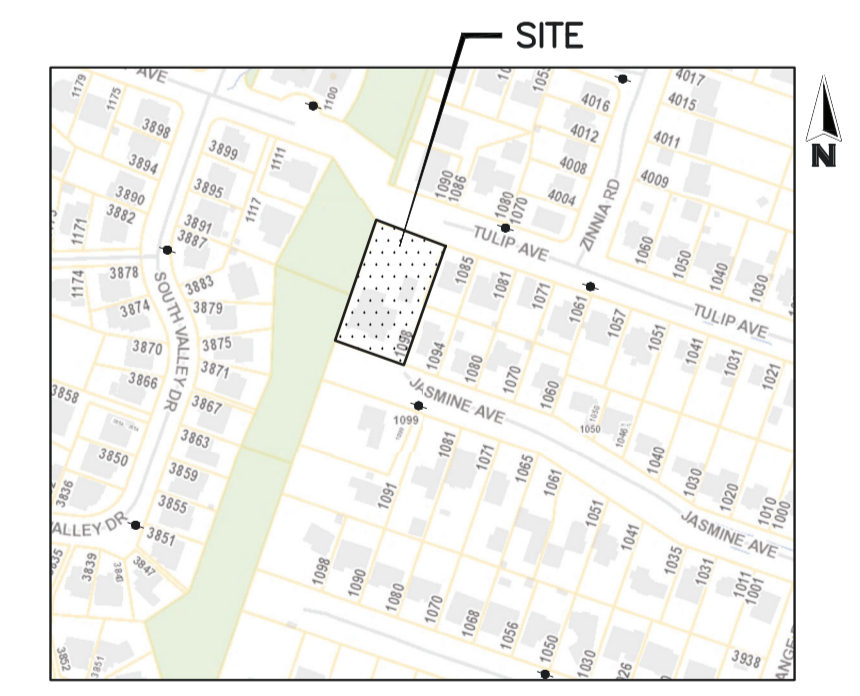


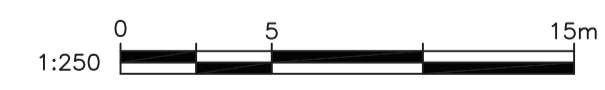
- NOTES:**
- DISTRICT OF SAANICH FORCES SHALL INSTALL THE PROPOSED IC ON THE EXISTING DRAIN SERVICE AT THE DEVELOPER'S EXPENSE.
 - DISTRICT OF SAANICH FORCES SHALL INSTALL THE 200# DRAIN STUB ON THE EXISTING MANHOLE AT THE DEVELOPER'S EXPENSE.
 - DISTRICT OF SAANICH FORCES SHALL INSTALL THE 150# SEWER STUB ON THE EXISTING MANHOLE AT THE DEVELOPER'S EXPENSE.
 - DISTRICT OF SAANICH FORCES SHALL UPGRADE THE EXISTING WATER SERVICE AND METER FROM 13mm TO 19mm AT THE DEVELOPER'S EXPENSE.



- LEGEND**
- APPROXIMATE EXTENT OF PROPOSED ASPHALT PAVING
 - PROPOSED GRAVEL PATH
 - EXISTING TREE TO REMAIN
 - EXISTING TREE TO BE REMOVED
 - PROPOSED SPOT ELEVATION
 - EXISTING SPOT ELEVATION



ISSUED FOR
REZONING APPLICATION



<p>WESTBROOK Consulting Ltd. #115 - 866 Goldstream Ave., Victoria, BC V9B 0J3 Telephone: 250-391-8592 Facsimile: 250-391-8593</p>	<p>1098 JASMINE AVENUE</p> <p>JANICE PARKER & TERRY WEBER</p>	WESTBROOK PROJECT No.
		3294
		SHEET 1 OF 1 REV.
		WESTBROOK DWG No.
		329401
		SAANICH DWG No.
		SUB00895

WESTBROOK CONSULTING LTD. 2023-03-13 08:29AM H:\PROJECTS\3294_1098 Jasmine Ave\DWG Drawings\329401_02.dwg

LEGEND - Existing services shown solid				REVISIONS			
WATER — W —	CURB — C —	EXISTING U/G UTL.	MANHOLE ○	HYDRANT ◇	REDUCER ▾	SEPTIC TANK □	
DRAIN — D —	SIDEWALK S/W	PROPOSED U/G UTL.	CLEANOUT □	VALVE ○	CAP ▾	TEST PIT □	
DITCH — D —	EDGE PAVE.	LIGHT STANDARD	CATCHBASIN ▭	FLUSH VALVE ⊗	PLUG ▾	PERC. HOLE ○	3
SEWER — S —	BUSHLINE	POWER POLE	SILT TRAP ▭	AIR VALVE ⊕	CULVERT ▾	MONUMENT ⊙	2
GAS — G —	TREE	ANCHOR	CONC. BOX ▭	METER □	ROAD SIGN ▸	LOT PIN •	1

REVISIONS APPROVED			DESIGN APPROVED		
REVISION # 1	REVISION # 2	REVISION # 3	EXCEPTIONS		
APP. DATE SIGN	APP. DATE SIGN	APP. DATE SIGN	APPROVED BY	DATE	SIGN
DESIGN ENGINEER	DESIGN ENGINEER	DESIGN ENGINEER	DESIGN ENG.		
MGR OF DEVELOPMENT	MGR OF DEVELOPMENT	MGR OF DEVELOPMENT	MGR OF DEV.		
DEVELOPMENT COORDINATOR	DEVELOPMENT COORDINATOR	DEVELOPMENT COORDINATOR	DEV. COORD		

DISTRICT OF SAANICH			
JASMINE AVENUE & TULIP AVENUE			
WATER, SEWER, DRAIN, ROAD, HYDRO, TEL, CABLE			
B.M.	ELEV.		
DESIGN	IK/MW	DRAWN	BB
SCALES	Hor. 1:250	Vertical	N/A
DATE	JANUARY 2023	CHECKED	