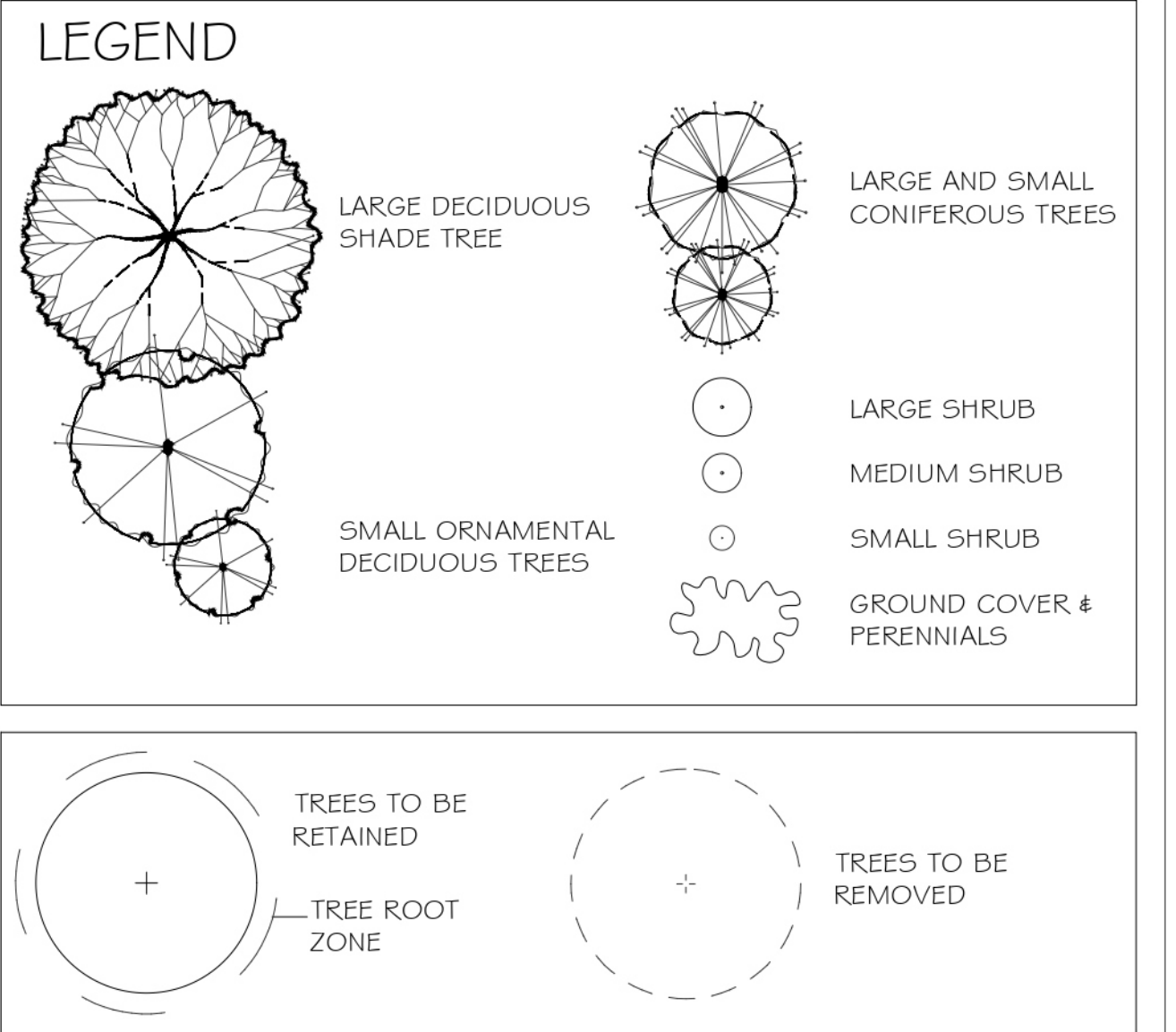


**PLANT LIST**  
4551 VIEWMONT

Key	Quantity	Common Name	Latin Name	Size
TRNCS	2	Heritage River Birch	<i>Betula nana</i> (Multistem?) var. 'Cody'	3.0 m HT
RMAP	1	Red Maple	<i>Acer rubrum</i> var. 'Red Sunset'	7cm Cal.
DEKD	6	Berberis Opuntia	<i>Ficus ornata</i>	2.5m HT
JMAP	2	Red Japanese Maple	<i>Acer palmatum</i> var. 'Bloodgood'	6cm Cal.
LARGE SHRUBS	7	Lily of the Valley Shrub	<i>Lilium japonica</i> var. 'Forest Flame' & 'Valley Rose'	#5 Pot
SHRUBS	3	Rhododendron	<i>Rhododendron</i> var. 'Pink Wallpaper'	#7 Pot
LRHB	6	Rhododendron	<i>Rhododendron</i> var. 'Colum Waterer'	#7 Pot
THUJ	5	Upright Cedar	<i>Thuja occidentalis</i> var. 'Spirangul'	1.5m HT
MEDIUM SHRUBS	11	Satini	<i>Gaultheria shallon</i>	#2 Pot
SHRUBS	3	Rhododendron	<i>Rhododendron</i> var. 'Landscape'	#5 Pot
MRHA	11	Rhododendron	<i>Rhododendron</i> var. 'Christmas Cheer'	#5 Pot
ALAT	16	Dwarf Burning Bush	<i>Echinops alata</i> var. 'Compact'	#5 Pot
VACC	11	Mountain Blueberry	<i>Vaccinium oxycodum</i>	#5 Pot
ABE	30	Glossy Abelia	<i>Abelia x grandiflora</i>	#2 Pot
MAHC	6	Dwarf Oregon Grape	<i>Mahonia aquifolium</i> var. 'Compact'	#2 Pot
SMALL SHRUBS	14	Creeper Eucalyptus	<i>Eucalyptus fortunei</i> var. 'Emerald Gaiety'	#1 Pot
EUOF	95	Dwarf Lily of the Valley Shrub	<i>Lilium japonica</i> var. 'Elegant'	#1 Pot
POLY	15	Beard Fern	<i>Polystichum munitum</i>	#1 Pot
DWRH	12	Dwarf Rhododendron	<i>Rhododendron</i> var. 'Asteria'	#1 Pot
AZAP	28	Evergreen Azalea	<i>Asarum var. 'Sumpo Pink'</i>	#1 Pot
GROUND	240	Bearberry	<i>Arctostaphylos uva-ursi</i> var. 'Vancover Jade'	SP4
BEESG	48	Heartleaf Bergenia	<i>Bergenia cordifolia</i> var. 'Bismarck Ruby'	SP5
COVERS	25	Wintergreen	<i>Gaultheria procumbens</i>	SP4
VINES	2	Evergreen Clematis	<i>Clematis amurensis</i>	#2 Pot
PERENNIALS	28	Flame Sedge	<i>Carex testacea</i>	SP5
GRASSES	44	Vancouver Sedge	<i>Carex moenchii</i> var. 'Vancouveria'	SP5
MISC	18	Maiden Hair Grass	<i>Miscanthus sinensis</i>	SP5
SCIZ	72	Kaffir Lily	<i>Strobilanthes coccinea</i> var. 'Oregon Sunset'	SP5
HEUC	36	Coral Bells	<i>Heuchera</i> var. 'Palace Purple'	SP5
STIP	14	Spirea Grass	<i>Spiraea japonica</i>	SP5

Notes: - All landscape work to conform with B.C.S.I.A. / B.C.N.T.A. standard specification.  
- All areas to be irrigated with an automatic underground system.



**TREE PLANTING REQUIREMENTS:**  
- IT IS REQUIRED THAT THE ONSITE TREES MEET BC LANDSCAPE STANDARDS FOR TREE PLANTING AND REQUIRES A MINIMUM AVAILABLE SOIL VOLUME OF 8 M³ FOR SMALL CLASS TREES, 20 M³ FOR MEDIUM CLASS TREES AND 35 M³ FOR LARGE CLASS TREES. (TREE PROTECTION BYLAW, PART 4)

**FORSITE LANDSCAPE ARCHITECTURE**  
#408-1581H HILLSIDE AVENUE  
VICTORIA, BC V8T 2C1  
forsiteland@hotmail.com

ARCH. STAMP  
THE DRAWINGS, DESIGN IDEAS AND FEATURES OF CONSTRUCTION DEPICTED HEREIN ARE THE EXCLUSIVE PROPERTY OF JOYCE REID TROOST ARCHITECT. ALL COPIES, REPRODUCTIONS AND ANY PARTS THEREOF ARE EXPRESSLY RESERVED. THEY ARE NOT TO BE REPRODUCED, COPIED, REPRODUCED, OR USED FOR ANY PURPOSES WITHOUT THE WRITTEN CONSENT OF JOYCE REID TROOST ARCHITECT. IN THE EVENT OF ANY UNAUTHORIZED USE OF THESE PLANS BY A THIRD PARTY, THE THIRD PARTY SHALL NOT HOLD JOYCE REID TROOST ARCHITECT RESPONSIBLE.

4551 VIEWMONT  
VICTORIA, BC

CLIENT

REV. DATE	NUMBER	DESCRIPTION
03-02-2023	1	PRELIM. CONCEPT PLAN - FOR REVIEW
03-16-2023	2	ISSUED FOR DEVELOPMENT PERMIT

DATE: MARCH 16, 2023  
SCALE: 1:100  
DRAWN BY: BF

LANDSCAPE CONCEPT & PLANTING PLAN  
**L100**