

\*\*\*\*\*

# The WINDSHEET

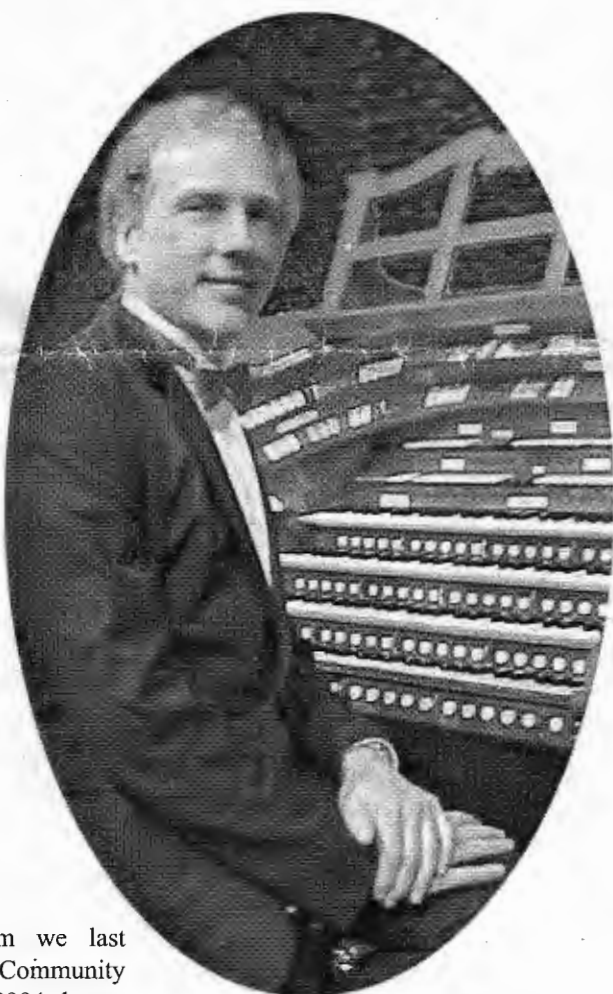


Newsletter of the NORCAL THEATRE ORGAN SOCIETY  
PO Box 27238, Oakland, California 94602-0438 510/644-2707

www.theatreorgans.com/norcal

February 2007

## CHRIS GORSUCH at the Berkeley Community Theatre February 11, 2007 — 2:30 PM



**C**hris Gorsuch, whom we last heard at Berkeley Community Theater in March of 2004, began organ studies at age 14 in his home town of Springfield, Ohio. At 20, he moved to San Diego and played for Organ Power Pizza restaurants, including the famed 5 manual *Reginald Foort Traveling Möller Theatre Pipe Organ*, now at the Pasadena Civic Center. In San Diego, Chris studied with **Lyn Larsen**. Many musicians have contributed their influence to Chris's musical style. Music of the *Big Band* era is a particular favorite, as well as classical, jazz and the music of the 20's and 30's.

In 1979 he formed his own company to design and manufacture electronic systems for pipe and electronic organs. Chris is also a superb pipe voicer and tonal finisher and he is as much at home in a pipe organ chamber as he is on the bench playing the finished product.

NorCal is thrilled to present Chris in concert on our *4/40 Wurlitzer* at the Berkeley Community Theater. We know that all who attend will enjoy the stylings of Chris Gorsuch.

**R**emember: first time concert goes are admitted free, so bring your friends and neighbors who have never experienced the power and drama of a Theatre Pipe Organ concert.

### Report of Annual Business Meeting and Concert held on January 21, 2007

**M**embers may request complete Minutes of the Annual Membership Meeting from NorCal Secretary, **Art Woodworth**, but here are some important highlights from the meeting:

Treasurer **Ron Bingaman** presented a very favorable report on NorCal's financial condition. Due to three factors, Ron said, our net cash flow was positive for 2006, despite the fact that the presentation of public concerts continues to be a 'loss leader.' The three favorable factors were:

- ✓ Organ maintenance expense control
- ✓ Donations
- ✓ Financial Equity Investing

Membership Chairman **Neal Wood** reported that our year-end membership was slightly down at **179**, including 128 Active members (NorCal and ATOS members), 46 Associate members (NorCal only) and 4 Lifetime members.

Program Chairman **Gordon Pratt** reviewed the active 2006 year of events, which featured a stellar event nearly every month of the year.

Federal Employer Identification Number 23-741594-7 • State Charitable Trust No. CT 45966 • State Organization Number D-072 6636 NT20S M12

<b>CHAIRMAN</b> Kevin J. King 2851 Creston Road Walnut Creek, CA 94597 925/256-7436 kevjking@juno.com	<b>VICE CHAIRMAN</b> Neal R. Wood 523 Corbett Avenue San Francisco, CA 94114 415/861-7082 nealwood@pacbell.net	<b>SECRETARY</b> Arthur Woodworth 600 Coventry Road Kensington, CA 94707 510/524-7452 awoodworth@bigfoot.com	<b>TREASURER</b> Ronald D. Bingaman 837 Redwood Dr. Danville, CA 94506 925/736-4512 ron.bingaman@safeway.com	<b>EDITOR</b> Don Ravey 127 Chukker Ct. San Mateo, CA 94403 650/573-8027 don@ravey.net	<b>PROGRAM</b> Gordon A. Pratt 15942 Via Cordoba San Lorenzo, CA 94580 510/276-8102 aznme2@webtv.net	<b>MEMBERSHIP</b> Neal R. Wood 523 Corbett Avenue San Francisco, CA 94114 415/861-7082 nealwood@pacbell.net
--	---	---	---	---	---	--

When emailing, include ATOS in the subject line. Otherwise, if you are unknown to the recipient's computer, its SPAM filter may divert your mail.

**SOLO STRINGER**  
Dean Cook



The genial **Jerry Nagano** was our artist for the annual membership meeting and concert on January 21, opening with a sprightly played console-riser, *Fine And Dandy*. The second number was introduced with a sly comment about the temperature in the Berkeley Community Theatre's auditorium... *Button Up Your Overcoat*. Perhaps it should be called the BRRRRRkeley Community Theatre! Next up was a short medley of three tunes from the vaults of 20<sup>th</sup> Century Fox Studios motion picture scores, including a lush *Laura*, and a seldom heard *Animal Crackers In My Soup*. Cracklin' good fun! Jerry said his next tune was reminiscent of "smoky lounge music..." *I Remember You* brought to mind images of a late hour, nearly deserted bar room somewhere way down on the south end of the strip, circa 1964. Next, the Lerner & Loewe 'geographical medley' had three well-known selections from that perennial pair: *Heather On The Hill* from Ireland, and *What Do The Simple Folk Do?* represented England (albeit in the Middle Ages), and one of **Maurice Chevalier's** signature pieces, *Thank Heaven For Little Girls* from (where else) France. Two big medleys closed the first half, both from the pen of the great **Richard Rogers**. We began with music from the Rogers & Hart era, and included *This Can't Be Love*, a bewitching *Bewitched, Bothered And Bewildered* and a snappy *[The] Lady Is A Tramp*. Jerry finished the first half with a well constructed medley from *Oklahoma!*, evoking the later Rogers & Hammerstein era. Rather than the usual slam-bang opening, Jerry chose to open this one "soft and pretty," with *Oh, What A Beautiful Morning*, and built up from there. Gorgeous!

The second act began with a snappy **Burton Lane** number, followed by *How About You? Time After Time* was a lush ballad, and then *The Capitol March*, composed for the Capitol Theatre in New York to introduce the newsreels. Quoting

the late **John Muri**, Jerry introduced his next medley, "**Richard Whiting** wrote many fine pieces; here are three that aren't!" No need to fear, all three were great; your Solo Stringer can't get enough *Hooray For Hollywood!* A haunting, too seldom performed *Pavanne (Fauré)* was next, expertly utilizing the BCT Wurlitzer's Harmonic Flute, complete with delayed *vibrato*, courtesy the second-touch. Referencing the late **George Wright's** Saturday Night Dance Medley, Jerry offered up **Bunny Berigan's** theme, *I Can't Get Started*, followed by *Dream*, and then *Wrap Your Troubles In Dreams*. **Eric Coates' Dam Buster's March** was the concert closer. For the encore Jerry wowed us with *Finger Fling*, one of those piano novelties one just doesn't hear much anymore.

A **Jerry Nagano** concert always displays several hallmarks...well thought-out and constructed registrations; expert use of second-touch; clean, snappy pedal work; and lovely harmonic textures. Bravo!

I do have an addendum about *The Dambuster's March* that might be interesting, quoting from *FlyPast Magazine*, May 2005 issue: "**Leighton Lucas** was commissioned to write the score for *The Dam Busters*, but today, only **Eric Coates's** famous theme is remembered. Coates had already written the piece when he was contacted by **Louis Levy**, Associated British Picture Corporation's Music Director. According

## Membership Badges

Have you admired the blue membership badges that many NorCal members wear to concerts? **Bill Schlotter** advises that Costco no longer makes these custom items and he had to find a new source, which will be K-Mart. Alas, their price is higher, so new badges will cost NorCal members \$13 to have manufactured and shipped prepaid to their address. Send your checks and the exact spelling of your name as you want it to appear on the badge to:

**Bill Schlotter**  
6203 Elderberry Dr  
Oakland, CA 94611-1621

Order yours while we have this

**CHAIRMAN'S  
WINDLINE**



Hello NorCal members!

As I write this, we have just completed our annual business meeting. The best part of these meetings is that we have a great concert as well. We were treated to one of our own local artists, **Jerry Nagano**. Jerry provided a most varied and entertaining program. It was great to hear him again.

A second, equal highlight, was the dinner 'get-together' that followed. We had somewhere around 40 people gather at *Henry's* at the Hotel Durant for dinner and socializing. Members **Frank** and **Jan La Fetra** did an outstanding job of researching venues and planning for the dinner. One thing often missed at our NorCal programs is the social aspect. There is seldom the chance to relax and visit with other members and guests. Often the crew people running the show are so busy backstage that we never see who is attending a concert, or have a chance to even say hello and welcome.

Many who attended the post-concert dinner commented on how much fun it was, and the desire to do it again soon. Hopefully we won't have to wait a full year. This might be a fun way to kick off a new concert season when it begins next fall.

Too often a group dinner will offer one or two choices only. One of the great things was that we were able to order off of the regular menu. That way the dinner could suit each taste (no rubber chicken for all), and suit each wallet (no \$50.00 for the rubber chicken).

One of the possible nightmares of a large dinner gathering is the check! I want to give a SPECIAL thanks to **Frank La Fetra** and **Ron Bingaman** who made dealing with the dinner check effortless for the rest of us. They wisely brought a printing calculator along and came to each guest with a printout of their dinner costs. This was a brilliant idea and helped to make things even more perfect.

Please plan to join all of us next time.  
Best wishes.

**DINNER AT  
HENRY'S  
AFTER  
ANNUAL MEETING  
ON  
21 JANUARY 2007**







Photos by Jan La Petra



## EDITOR'S RAVINGS

We are NorCal Theatre Organ Society – notice that last word, *Society*.

Another related word is *social* – both words are derived from Latin, through French. Note these etymologies:

*social* (adj) - “friendly association with others,” from O.Fr. *societe*, from L. *societatem*, from *socius* “companion.”

*society* (n) - “characterized by friendliness or geniality,” also “allied, associated,” from M.Fr. *social* (14c.), from L. *socialis* “united, living with others,” from *socius* “companion,” probably originally “follower,” and related to *sequi* “to follow” (cf. O.E. *secg*, O.N. *seggr* “companion,” which seem to have been formed on the same notion).

Well now, aren't you glad I told you that? I hope so, because what I'm trying to

say is that NorCal Theatre Organ Society is based on concepts of *friendliness, geniality, and companionship*. Recently your Board of Directors has been trying to develop and encourage activities that promote just exactly those concepts.

Our January annual membership meeting was an example of combining a free concert and an optional dinner with the necessary business meeting. We counted approximately 50 attendees at the meeting, better than in several recent years, and over 30 joined us after the meeting for a delicious and sociable dinner in warm surroundings at Henry's restaurant in the Durant Hotel, about a mile from the theater.

Speaking as one member of the Board, I would really like to hear from members who have suggestions for ways in which we can create more social interaction at NorCal events. What kind of new events would *you* find attractive? At our usual events, are there ways we could make it easier to meet and socialize with other members? Anyone for singalongs?

## OPEN CONSOLE Hosted by Chris Nichols



This is an opportunity for NorCal members to try their hand at playing the Chapter's Wurlitzer at the Berkeley Community Theatre. When the theatre is available, these sessions run from 1:00 to 5:00 PM. The next scheduled dates are:

**Sunday, February 18, 2007**

**Sunday, March 11, 2007**

Open Consoles are informal and our genial host, Chris Nichols, ensures that any NorCal member feels comfortable. He lends help and support to anyone who needs it. Depending on how many members are present, each has one or more 15-minute sessions at the console.

Important: Call the NorCal voice mail at (510) 644-2707 on that Sunday morning to confirm theatre availability. If there will be Open Console, enter via the back-stage door at 1930 Allston Way.

## ATOS Competition

The American Theatre Organ Society is pleased to announce the 2007 ATOS Amateur Theatre Organist Competition which is a merger of the former Electronic and Hobbyist organ contests. The Amateur Theatre Organist Competition provides for prizes and recognition, as well as an opportunity to receive constructive feedback from highly qualified judges.

In an effort to increase participation in this competition, several important changes to the rules for this year's event have been made and the complete competition rules are available on the ATOS website.

❖ The new competition is open to ATOS members and non-members alike. Entrants who are members of ATOS chapters may still be sponsored by their home chapter. Entrants who are ATOS members, but not affiliated with a chapter, or individuals who are not members of ATOS, may enter as entrants "at large."

❖ The age limits have been changed to mirror similar changes in the Young Theatre Organists Competition. Youth Division will be 13 - 24, and Adult Division will be 25 and up.

❖ Youth entries may enter on Electronic Theatre Organs and Adult entrants may enter on either a Theatre Pipe Organ or an Electronic Theatre Organ. (Entrants less than 25 years of age interested in entering on a theatre pipe organ must enter the Young Theatre Organist Competition.)

❖ The time limit for entries has been increased to a total of twenty (20) minutes so that all entrants can better present their musical abilities. In addition, the three required selections have been modified to include an up-tempo selection (console riser), a ballad, and a medley.

❖ The 'amateur' requirement for the competition has been clarified to allow for participation by entrants who are amateurs, but nonetheless play for church services or occasionally play in other venues. Specific guidelines are provided for eligibility determination.

❖ The top finishers of each Division will receive an official ATOS plaque recognizing their achievements. ATOS is also pleased to award a one (1) year complimentary ATOS membership or membership renewal to the top placing entrant in each Division. The winners of

each Division who are not members of ATOS will be provided a complimentary one-year membership.

We hope that many of you will consider entering this musical event. Again, complete rules, information, and entry forms are available at the ATOS website [www.atos.org] or by contacting the Chairman at b.acker@atos.org.

## Console Available

### Unfinished 2-manual console available from NorCal member

Back in the '60s my father, a professional carpenter, built an organ console with plans and parts from suppliers furnished by **Ray deVault**; they knew each other at Lockheed. Later, my father owned a business that supplied Devtronix with magnetic components. My father never actually figured out what to do with this console, so it has been sitting in our garage, totally unused, for about 40 years, protected from the elements.

This is a real, home-living-room-type theatre organ console; a true piece of furniture.

#### Specs:

- Console: Height: 45.5", Width: "55.5", Depth: 29.25"

- Walnut veneer.

- Matching bench. Height: 25.75", Width: "48.0", Depth: 13.75", with a 'heel rest rail.'

- Genuine horseshoe-curved stop rail.

- Two manuals; never used; new and shiny.

- Full 32-note radiating concave pedal board; never used; new and shiny.

#### What it lacks:

- Finish. Console (and bench) needs stain/varnish/lacquer/paint, whatever.

- Stop keys. A slot will have to be cut in the stop rail to accommodate stop keys.

- A swell pedal. A hole will have to be cut in the front for a swell pedal.

- Combination action. Holes will have to be drilled under the manuals for combination pistons.

- A music rack.

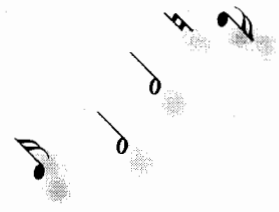
Note that the only internal parts are key contacts attached to the manuals. The pedal board is detachable and there is nothing in the console yet for it to be connected to.

Once the above-mentioned augmentations are added, it is ready to be connected to pipes, electronic tone generators or a computer.

Anyone can have console/bench/pedal board *for free*, all or separately, if they will haul it away for us (like I said, it is a real piece of furniture, and it is heavy). We live in Sunnyvale.

Real horseshoe consoles are hard to come by, much less build, so...if you want it, contact me:

**John C. Onia**,  
Sunnyvale, CA  
(408)-252-4168  
(to\_jol@all2easy.net)



## FOR SALE

Allen R211D theatre organ, AGO size model built in 2003; has latest software, double audio (two M5 amps), headphone jack and internal/external audio switches. Ensemble II and Console Controller in drawers. Comes with two non-Allen, small footprint, audio quality, finished, tower speakers with built-in powered subs. Always in my home.

Available to see, hear and play. Call **Jerry Cecere** at 916-987-1333 in Folsom. Mint condition. Asking \$15,495. Without speakers, \$14,495. Voiced in October 2003 by Walt Strony. Purchaser to arrange move.

# UPCOMING EVENTS

Sunday, February 11, 2007 – 2:30 PM:  
NorCal presents

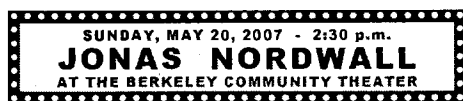


Sunday, March 18, 2007 – 2:30 PM:  
NorCal presents



April 14, 2007 – 1:00 PM: **Morton Madness** – Two concerts on two Robert Morton pipe organs. Both concerts will be performed by *Paul Quarino*. Visit *Sierra Chapter's* web site: [sierrachapterATOS.org] for more information and for driving instructions.

Sunday, May 20, 2007 – 2:30 PM:  
NorCal presents



**NOTE:** Due to a double booking error at the BCT, we are asking **Richard Hills** if he can perform for us on **Saturday, June 9** instead of Sunday, June 10. We will confirm his reply in the next Windsheet. Please change your calendar and the date on your tickets.

Saturday, June 9, 2007 – 2:30 PM:



## Events on NorCal Web Site

We have a new Calendar of Events on NorCal's web site: [theatreorgans.com/norcal](http://theatreorgans.com/norcal)

We think you will find it easier to read and more attractive. Be sure to visit it!

## OTHER VENUES

**Angelino's**, 3/13 *Wurlitzer*, 3132 Williams Rd, San Jose, CA. Fridays & Saturdays, 6 to 9 PM. **Dean Cook**. (408) 243-6095.

**Bella Roma Pizza**, 3/16 *Wurlitzer*, 4040 Alhambra Ave., Martinez, CA. **Dave Moreno**, **Bob Reichert** or **Kevin King** at the console. (925) 228-4935.

**Castro Theatre**, 4/22 *Wurlitzer*, 429 Castro St., SF, CA. Intermission music played daily by **David Hegarty**, **Warren Lubich**, **Mark Putterbaugh** or **Harry Garland**. (415) 621-6120.

<[www.castrotheatre.com](http://www.castrotheatre.com)>

**Grand Lake Theatre**, 3/18 *Wurlitzer*, 3200 Grand Ave., Oakland, CA. Intermission music: **Warren Lubich** (Fridays) & **Kevin King** (Saturdays). (510) 452-3556.

**Palace of the Legion of Honor**, 4/63 *E. M. Skinner*, Lincoln Park, San Francisco Presidio. Saturdays and Sundays from 4:00 to 4:45 PM. Free after museum admission. **David Hegarty** plays an *Organ Pops Concert* on some weekends, other artists play classical concerts on other weekends. (415) 750-3600.

<[www.legionofhonor.org](http://www.legionofhonor.org)>

**Paramount Theatre**, 4/26 *Wurlitzer*, 2025 Broadway, Oakland, CA. Public tours on first and third Saturdays of month at 10 AM. (510) 465-6400.

**Stanford Theatre**, 3/21 *Wurlitzer*, 221 University Ave, Palo Alto, CA. (650) 324-3700.

<[www.stanfordtheatre.org](http://www.stanfordtheatre.org)>

**Towe Auto Museum**, 3/16 *Wurlitzer*, 2200 Front St., Sacramento, CA. Free Sunday concerts with Museum Admission. Sierra Chapter presents silent movies on Friday night, four times each year.

<[www.sierrachapterATOS.org](http://www.sierrachapterATOS.org)>

**Visalia Fox Theatre**, 4/22 *Wurlitzer*, 300 W. Main St., Visalia, CA. (559) 625-

## OTHER CHAPTERS

**Sierra Chapter, Sacramento, CA**  
<[www.sierrachapterATOS.org](http://www.sierrachapterATOS.org)>

**Mount Shasta Chapter TOS**  
Contact Al Schoenstein  
(DSchoen940@aol.com)

### MEMBERSHIP APPLICATION

NORCAL THEATRE ORGAN SOCIETY, Inc.

*A Chapter of the American Theatre Organ Society*

ATOS is dedicated to promoting the tradition of the theatre pipe organ and public understanding and appreciation of the instrument and its music, and shall aid in any way possible the preservation of theatre organs through rehabilitation of instruments and fostering the arts of playing, building, voicing and maintenance. If you would like to join us, please write or call: **Mr. Neal R. Wood** at (415)861-7082 <[nealwood@pacbell.net](mailto:nealwood@pacbell.net)> , PO Box 27238, Oakland, California 94602-0438.

Your Name: \_\_\_\_\_ Your Spouse's Name: \_\_\_\_\_

Address: \_\_\_\_\_

Phone: \_\_\_\_\_ Occupation: \_\_\_\_\_

Dues are \$20 for NorCal TOS only and an additional \$40 for National ATOS (\$60 total) per year for full voting membership and subscription to *Theatre Organ* the six times a year glossy journal of ATOS. Spouse and children living at home may be included in your membership. We hope you will join us to help preserve and enjoy these great instruments.