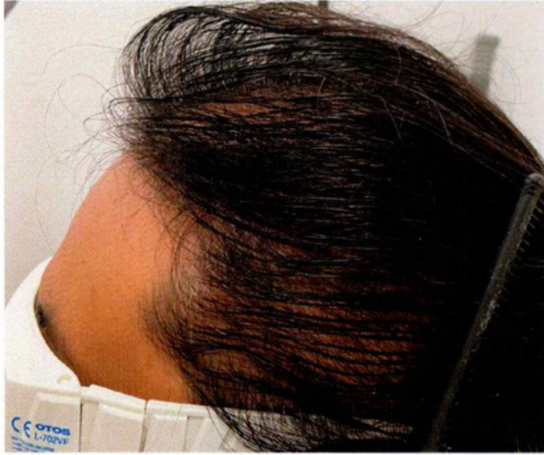


COMPELLING  
**KERALASE™** RESULTS

**BEFORE**



**AFTER**



Courtesy of Rumur Aesthetics

RESULTS MAY VARY

# Keralasé™

Intelligent Care for Hair™

*INTRIGUED?*

Learn more about KeraLase by  
visiting our website:



**LUTRONIC**  
Intelligent Care™

©2023 LUTRONIC. ALL RIGHTS RESERVED. LUTRONIC, Lutronic Intelligent Care, KeraLase, LaseMD and associated logos are service marks, trademarks, and/or registered trademarks of Lutronic Corp. and/or its subsidiaries in the USA and/or other countries. KeraFactor and KFP are trademarks of SkinQRI. MARK\_KEL\_BRO\_002

# Keralasé™

BREAKTHROUGH THERAPY  
FOR THINNING HAIR



*COMFORTABLE*  
Lutronic Ultra® Laser Treatment  
*COMPLEMENTS*  
KeraFactorMD® Topical Growth Factors

**LUTRONIC**  
Intelligent Care™



BEFORE

AFTER



Courtesy of Vanish, Inc.

BEFORE

AFTER



Courtesy of Jeanie Downie, MD

BEFORE

AFTER



Courtesy of Aesthetic Assets

## WHAT IS KERALASE™ IN OFFICE THERAPY?

Your skin is naturally designed to keep things out. Your doctor will first use the Lutronic Ultra® to create microchannels on the scalp.

The unique LaseMD Ultra laser delivery system has been proven to prepare the skin for increased absorption of nanoliposomes by 5 to 7 times.\*

After the scalp is pre-conditioned with the LaseMD Ultra® laser, KeraFactorMD® serum is topically applied to promote stronger, thicker, and fuller looking hair in both men and woman.

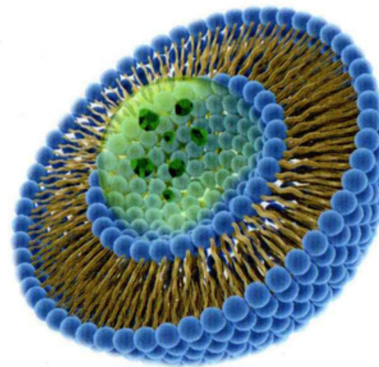
## HOW MUCH TIME DOES KERALASE TAKE?

- Comfortable (no injections) and fast (less than 30 minutes)
- Six-month treatment program is typical. Ask your doctor for options.
- Hair improvement continues over the following 6-12 months after a series of six\*\*

## WHAT IS KERAFACTORMD™ TOPICAL SERUM?

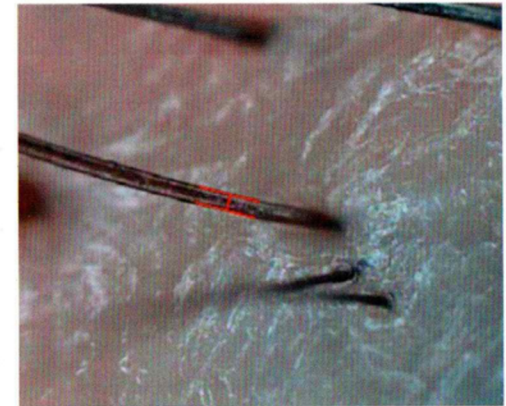
KeraFactor serum:

- Is a **proprietary and patented formulation**, only available through your doctor
- Targets known deficiencies and problems which can cause poor scalp health
- Contains six bio-identical growth factors, two skin proteins and two compounds, each:
  - Chosen to improve thinning hair
  - Developed in high concentrations not available from other sources
  - Delivered in a nanoliposome carrier for increased absorption



Artist Rendition: Nanoliposome cross-section, showing lipid outer layer encapsulating protein

**BEFORE:** DIAMETER 0.480mm



**AFTER:** DIAMETER 0.913mm



Courtesy of S. Cho, MD

Circles indicate revitalized hair follicles. Lines indicate increased hair diameter\*\*\*

\*\*\* Hair pictured had a 90% increase in diameter, results may vary.

\* Internally generated, data on file, Lutronic Corp.

\*\* Your doctor may recommend maintenance therapies