

HOW CAN YOU HELP?

Please help by –

- Signing our petition
 - Writing to Ministers, MPs and Local Government decision makers
 - Taking part in our social media campaign
 - Asking friends and colleagues to do the same
- See - [SAVEOTMOOR.ORG](https://saveotmoor.org)

SAVE

OTMOOR

FROM THE

EXPRESSWAY!

[SAVEOTMOOR.ORG](https://saveotmoor.org)

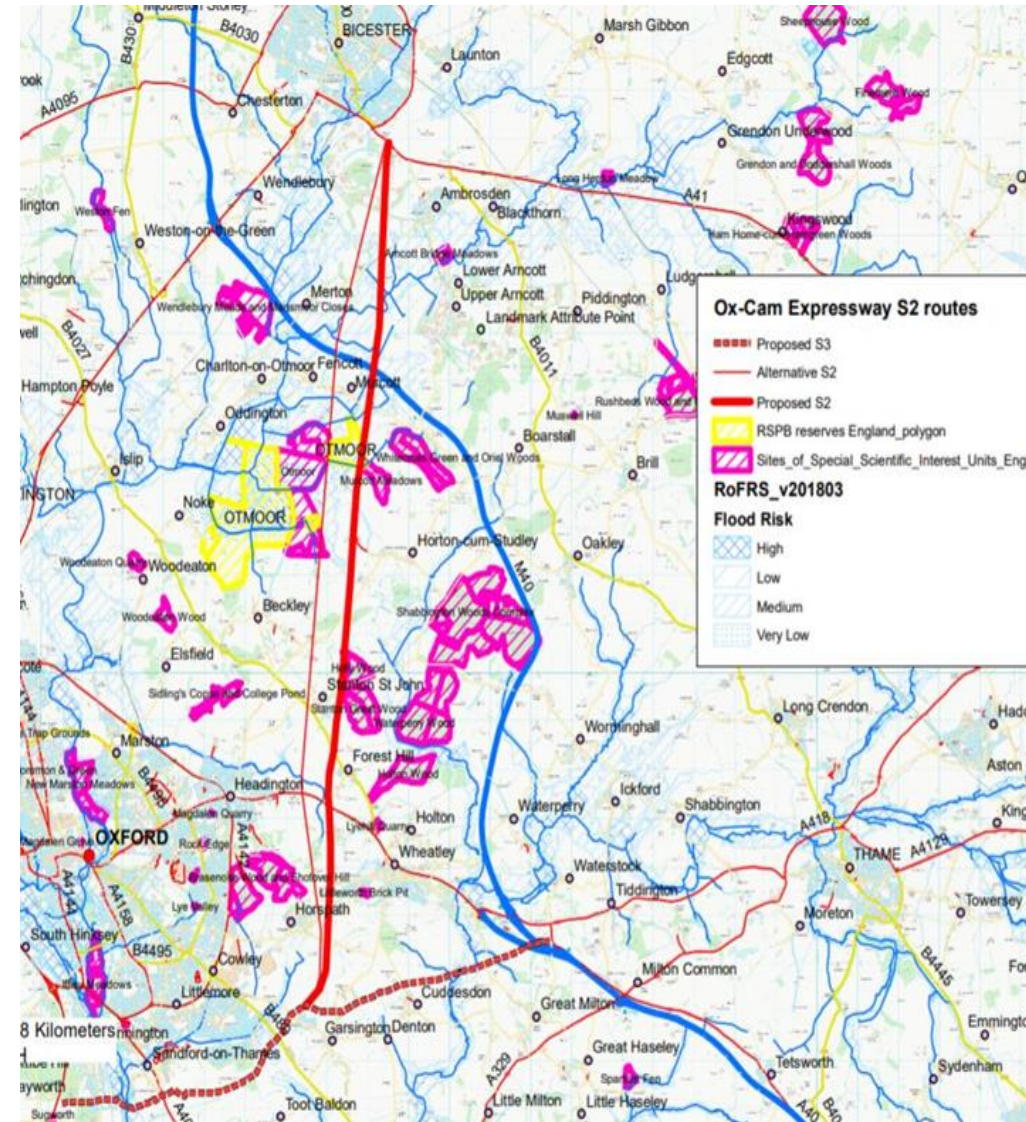
A new Expressway between Oxford, Milton Keynes and Cambridge is part of the government's 'growth corridor' plan to build 1,000,000 new houses, including 320,000 houses for Oxfordshire – equivalent to six new towns the size of Oxford.

One of the potential routes, 'S2', goes from Bicester, around the east of Oxford, cutting through twelve miles of Green Belt before joining the A34 near Abingdon. It would have to go across, or alongside, the RSPB Reserve of Otmoor, impacting SSSIs, ancient forests and nature reserves. The CPRE believe it will follow the route over the page.

There has been no Strategic Environmental Assessment and no public consultation or enquiry. The Minister, Chris Grayling, and Highways England intend to decide their favoured corridor behind closed doors by July 2018. The Expressway would be built in 2025-2030.

Otmoor and the surrounding area is one of our county's most precious assets. Now it needs your help.

Please see the back page for how you can help.



Route S2 adapted from CPRE and NIC maps