

Meeting Info:

Meeting location:
8361A Dayton Pike
Soddy Daisy, TN
(Horsin' Around)
At 1:00 p.m. Sat.
August 17 2024

IN THIS ISSUE

August Demonstrator	1
July meeting	2
Officers	3
Donations projects	
Sponsors	
Treasurer's report	4
The Web	
Club challenges 2024	
Safety	5
Updates	
Show & Tell Pictures	6
Demonstrator Notes	12

August Demonstrator

Anne Ogg

An Artisan in the International Guild of Miniature Artisans, I am a woodturner specializing in miniatures, specifically 18th and 19th century replicas in a scale of one inch to one foot. I teach woodturning at UNC Asheville in Skill-Set, a community outreach program that began in 2018 as a shop class for girls and now expands its reach to all members of the community. I served 6 years on the board of Carolina Mountain Woodturners, 2 as vice president and 2 as president. CMW is the largest chapter of the American Association of Woodturners. I have demonstrated for clubs in Maine, Tennessee, and North Carolina, and online for the International Guild of Miniature Artisans.

I will demonstrate scaling objects from full size down to 1:12 and show how turning miniatures helps with tool control. My expertise is in 18th and 19th century replica antiques. I will turn to scale a lidded wood bowl, a replica from the Winterthur Museum in Delaware. I will also talk about tools for turning miniatures. (I will bring a variety



Tri-State Woodturners
An official AAW chapter



of different brands with varying levels of metal quality.) And most recently I have been making my own tools for turning miniatures which, if there is time, I will talk about that process. That led me to make tiny metal collets with tiny set screws.

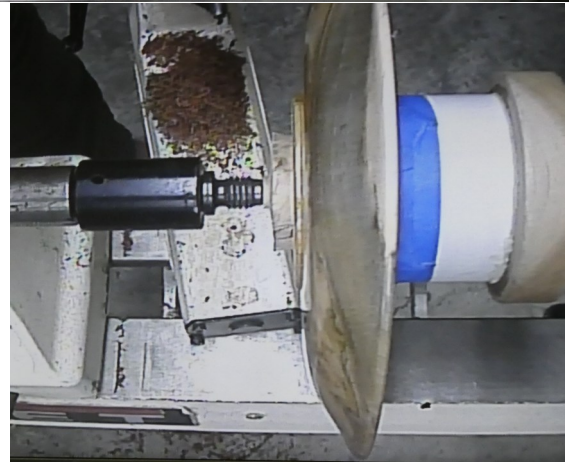
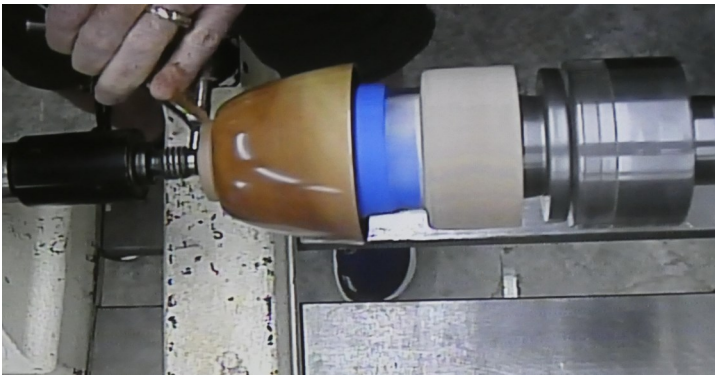
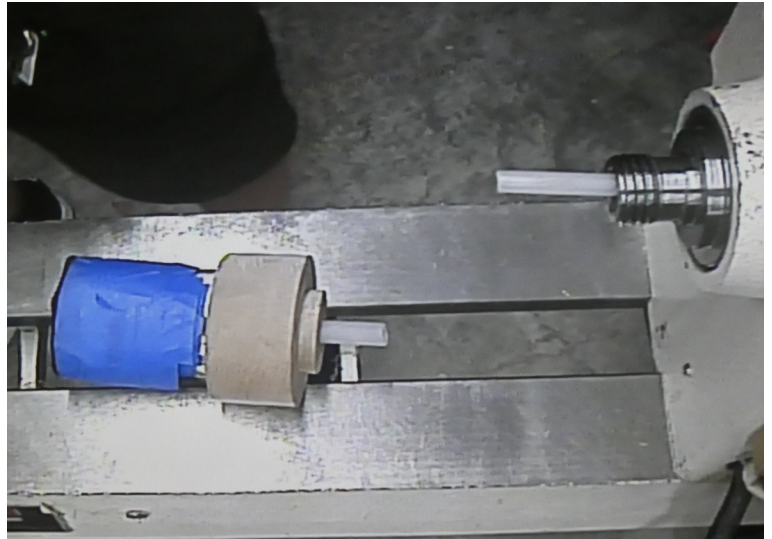
This is a very different demonstration from any we have had before so you will want to attend.

July Demonstration

Vacuum Chucks



Tim Mehling demonstrated the use of a vacuum chuck and how to mount pieces for the removal of the foot as well as other informative tips.



The Hold Fast Vacuum Chuck System was displayed for a total cost of ← about \$250 for people with an air compressor.

Doug Spohn showed his system which is shown here →





President, Doug Spohn

TSW CLUB OFFICERS

Doug Spohn President
(423)240-4386 djspohn@epbfi.com

Jerry Schnelzer Vice President
(423)280-9757 Jerry.Schnelzer@gmail.com

John Fortmiller Treasurer
(423)280-5904 Leowen@Epbfi.com

John Dekle Secretary/Newsltr Editor
(423) 364-1268 Turning411@Yahoo.com

Doug Spohn Program Director
(423) 240-4386 djspohn@epbfi.com

Most above officers are official
Tri-state Woodturner Mentors



Don't forget the opportunity to give to others by turning one of the donation projects; Beads of Courage Box, Pens for the Troops or Ornaments.



NEW MEMBER MENTOR: Are you new to wood turning or at least have an interest in it? TSW provides an opportunity for you to learn from other turners who are willing to give you personal instruction and guidance. There is no fee for this instruction for TSW members. Contact one of the listed officers who will guide you to select a helpful mentor for you.

The following sponsors give generously to Tri-State Woodturners and we want to encourage members to support them generously



5824 Brainerd Rd., Chatt. TN 373411 + (423) 710-8001

Ask about their discounts for AAW club members



Treasurer's Report



The Web

Beginning Balance May	2,354.74
Income	96.00
Raffle	56.00
Dues	40.00
Expenses	72.00
Rent	72.00
Ending Balance May	2,378.74
AV special contribution fund	300.00

Google can definitely be your friend in finding videos for certain projects. This month the challenge is a flashlight, a search yields both simple and more complex ways to turn a flashlight. Here is a simple one. [\(1242\) Turn a Wooden Flashlight on the Lathe | Beginning Woodturning - YouTube](#).

Next month is a natural edge goblet. While a Google search provides many options here is one by Mike Waldt. <https://www.bing.com/videos/riverview/relatedvideo?q=Stabelize+wood+with+catus+juice&&view=riverview&mmscn=mtsc&mid=48E0BFAD1D1EE0FA7A1448E0BFAD1D1EE0FA7A14&&aps=2&FORM=VMSOVR>

2024 TSW Club Challenges

Each member that brings a "Challenge Piece" and signs it in at the meeting, for the month of the challenge, is entered into a drawing for a gift certificate. You may do what was demonstrated the previous month as well. Doing the challenges provides you with experience in trying something new and will give others ideas of what they can make. If you previously made the challenge, try making another one with some kind of improvement.

Month	Item
January	Something from scrap wood—8
February	Heart— 5
March	Mug—5
April	Kaleidoscope—6
May	Tippe Top—5
June	Useful homemade Jig—4
July	Wig/Hat Stand—4
August	Flashlight -
September	Natural edge Goblet
October	Ghost
November	Ice Pick

If you have questions contact John Dekle at (423)364-1268 or email - Turning411@Yahoo.com





Safety Tips

When working with resins and finishes it is advisable to wear gloves as they can be very messy. In addition why expose your skin to possible toxins? Do you know what is in the resins or finishes you use? It is safer to use gloves that can be discarded after use and avoid messy clean ups and the potential of dangerous toxins.



Updates

Friends of Special Children Donations

Thank you to everyone who donated items for this special cause. I'm sure it will be a blessing to them.

Virtual AAW Symposium

If you signed up for the Virtual AAW Symposium videos are still up online to watch until September 3. Take advantage of viewing them while they are still available. This was an inexpensive way to see a lot of professional turners and learn from them provided you watch the videos.

FREE

Yes you read that right and who doesn't like free? John Dekle was able to purchase a huge quantity of snack size zip lock bags for a good price. He will make some available to members who are turning pens for the troops and bag them. These will be available at the meeting. The pens cannot be returned in the original bags as they say, "Made in Taiwan" so they need to be put in different bags. These also make it possible to include a note of appreciation and the makers info. The purpose of these free bags is for this cause.

If you pouring resin for handles and are interested in molds let John know at the meeting. He was able to pick-up some plastic tubes 1.5" x 6" that worked great for handles on pizza cutters and ice cream paddles. He has some to share if you are interested.



Show and Tell



Top 4 pictures are
items made by
John Dekle



← Jeff Brocket created these items ↓



Show and Tell



These items turned by
Charles Jennings



Pens for the Troops donated by →
John Fortmiller



Show and Tell



The six items above were created
by Jerry Schnelzer



← Suzanne Ruckman turned the
six items below

CUTS AND SCRAPES

Show and Tell



Johnny Renfro created these items for donation



Large Bowl, Key Ring, Stylus, 2 pens, and 20 Pens for the Troops were made by Les Isbell

← 6 items to the left were turned by Eric Schaffer



Show and Tell



Above Lidded Box, 2 Fountain Pens, Rollerball Pen and Pens for Troops by Ron Plumley

↓ Wig Stand by
Jerry Bowman



Wig Stand →
and Bowls ↓ turned
by Roger Kent



Show and Tell



All the items on this
page are attributed
to Jim Thomas

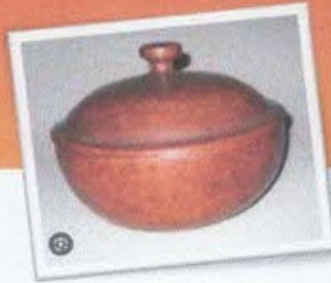


Notes from Demonstrator

Let's turn miniatures!

Anne Ogg

www.annieswoodturning.com



Scaling from 1' to 1"

The math is easy! Just divide by 12. In this example, we are taking a lidded dish that is approximately 7 inches high and 8.37 inches in diameter.

Height .58"

Diameter .7

1. Use straight and tight-grained wood for best results.
2. Mount the wood in the chuck with the center punched end toward the live center. Position the wood using the live center as a guide. Do not drive the wood flush in the chuck against the chuck wall but leave a thread or two.
3. True up the block, as much as you need for the item you are turning and then some.
4. Mark the diameter with the calipers



13. Using the spindle gouge and skew, shape the lid



10. Using a miniature or thin parting tool, create a lip to sit inside the dish.

11. Part off the lid.

12. Using the calipers, measure the interior rim of the cap.



9. Begin to hollow out the inside of the dish leaving enough on the inside edge to match the lid.



6. Once the lid fits, measure the height with the lid in place.

7. Shape the exterior.

8. Fine-tune the interior as the exterior shape emerges and part off.

5. Using a scrap block, create jam chucks to finish the inside lid and the bottom of the dish.

