

## TRI-STATE WOODTURNERS



Meeting Location:  
8361A Dayton Pike  
Soddy Daisy TN  
(Horsin' Around fac.)

### IN THIS ISSUE

Feb. demo	1
Jan. meeting	2
President's Corner Treasurer & Web	3
President's Corner Club Challenge 2018 Officers & Sponsors	3
Treasurer's Report The Web Upcoming Events Help Available	4
Interview	5
Club Challenge Pics	6
Show & Tell Pics	8
AAW Project	12
Notes for Demo Announcements	14

# Cuts and Scrapes

WWW.TRISTATEWOODTURNERS.COM

FEBRUARY 2018 NEWSLETTER



Tri-State Woodturners an  
official chapter of AAW

## Wayne Loveless

### Feb. Demonstrator

Wayne is no stranger to the Tri-state Wood-turners as he has demonstrated numerous times and is a vital part of the Woodcraft store, at 5824 East Brainerd Road.

Wayne lives in Ringgold, GA where his studio is located. He began his career in cabinet and furniture making in the mid 80's. While he enjoys all phases of woodturning, his forte is spindle work such as custom legs, finials, and architectural turnings. He has duplicated spindles for individuals, as well as furniture restoration businesses. He is known for his competence in maneuvering the skew chisel.

His time and passion for the craft is shared in teaching the art of woodturning to various students across the country. Wayne began teaching woodturning at the local



Woodcraft store. For the past few years, Wayne has taught and demonstrated wood-turning at local high schools, woodturning clubs, craft shows, and woodturning shows.

He will demonstrate turning a candle holder at the TSW club meeting this coming Sat. Feb. 17 at 1:00. Then Wayne will show how

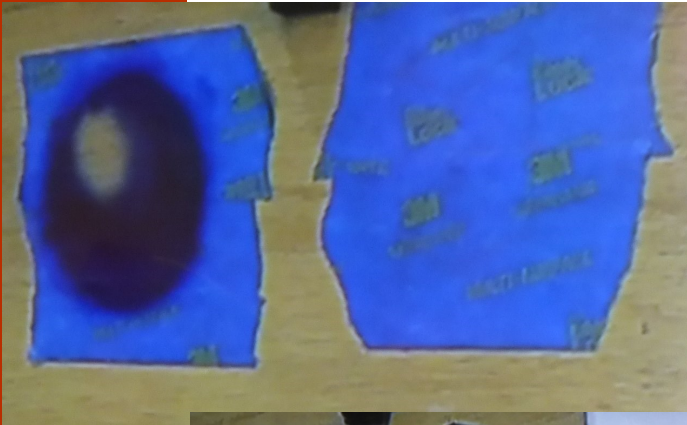
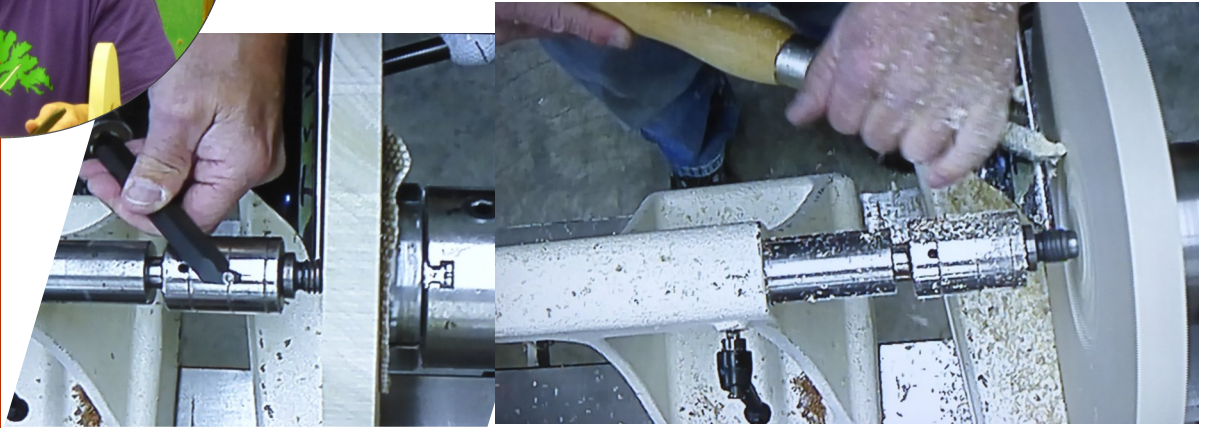
to apply milk paint as a finish. This is a great opportunity to see a master at work making a candle holder and maybe a new method of finishing a project. Invite a friend to come along with you for this practical demonstration.

See you at 1:00 this Sat. at Horsin' Around.

# January Meeting with John Lucas



John showed us how to turn a platter then discussed the art of air brushing it. In turning the platter he used a Hunter tool and discussed its benefits. The second half of the meeting he focused on air brush techniques and various types of air brush equipment and paints to use. He demonstrated ways to create interesting designs and patterns. The importance cleaning the equipment was also discussed.





# President's Corner

Remember the Feb. meetings presidents' challenge is wall art. Yep if you can hang it or stick it to the wall, it can be entered. I've seen really nice stuff that members and other turners have made. Remember the more you participate the more likely you'll win a special prize at the end of the year. We'll have a drawing at the meeting for a challenge and instant gallery participant to win a Woodcraft gift certificate.

certificates to the "wood auction" this year. I'd like to see us get away from "firewood" and have wood with good value. What I mean by this is wood that is prepped for mounting on the lathe or wood that has nice figure, etc.

We will need to begin thinking of a new president for next year. I also feel it's time for new ideas to keep the club on track.

Finally shop safety: Let's talk about drugs, the ones we take for cold and flu season. Many of these can have adverse effects in our ability to operate equipment safely. They can make you dizzy and sleepy. Use good judgment in the shop if you're having to take such drugs. Work safe.

I'd like our instant gallery to change just a bit. **When you drop your things off, fill out a provided form that will have your name, type of wood and finish on the piece. This will help members as well as John as he does our newsletter.**

We are still adding Woodcraft gift

## TSW CLUB OFFICERS

**Josh Bowman** President  
(423) 280-0954 jsbowman@bellsouth.net

**Jim Dvorak** Vice President  
(423) 883-2212 dvorak6258@epbf.com

**Charles Jennings** Treasurer  
(423) 902-1482 cwjwoodturner@epbf.com

**John Dekle** Secretary/Newsltr Editor  
(423) 508-8051 Turning411@Yahoo.com

**Doug Spohn** Program Director  
(423) 240-4386 djspohn@epbf.com

**Ed Lewis** New Member Mentor  
(423) 344-7295 EdLewis3267@gmail.com

**Beverly deYampert** Librarian  
(423) 760-8125 loveps139@gmail.com

## 2018 Club Challenge

January	Spindle— 10 submitted
February	Wall Art
March	Scoop
April	Beads of Courage Box
May	Goblet
June	Natural Edge

July	Utilitarian
August	Plate
September	Celtic Knot
October	Snowman
November	Inside Out
December	Silent Auction Item

**NEW MEMBER MENTOR:** Are you new to wood turning or at least have an interest in it? TSW club is providing opportunity for you to learn from an expert turner who has provided instruction and guidance to many in the club and others. Ed Lewis opens his workshop on Saturdays and would love to help you. Contact him at (423) 344-7295. There is no fee for this instruction from an excellent turner & teacher.

The following sponsors give generously to Tri-State Woodturners and we want to encourage members to support them generously



5824 Brainerd Rd., Chatt. TN 373411 + (423) 710-8001



CRAFT SUPPLIES USA  
THE WOODTURNERS CATALOG

www.woodturnerscatalog.com +(800)551-8876

# Treasurer's Report



# The Web

Starting Balance		4,723.04
Income:		829.00
Wood Raffle	167.00	
Snack collection	22.00	
Dues	640.00	
Expenses:		130.00
Demonstrator	130.00	
Ending Balance		5,422.04

One of our TSW Sponsors that provide gift certificates regularly is Craft Supplies, The Woodturners Catalog. They send out short videos on a regular basis as well to those who subscribe to their channel. You can check out their videos and tips at this web site <http://blog.woodturnerscatalog.com/category/woodturning-videos/pro-tips/>. When you watch a video subscribe and you will receive their videos to you email inbox. The current video is an evaluation of various tool steels used for turning tools, their ability to be sharpened to a keen edge, durability to hold that edge and affordability or price range.

Next months challenge is a "Scoop". If you do a search online for "Turning a wooden scoop" you will find a wide variety of designs and methods for making a scoop.



## AAW SYMPOSIUM

JUNE 14-17, 2018

PORTLAND, OR

It is a long way off in the future but to attend you may need some lead time to plan. It is a great experience to attend the AAW International Symposium. Portland is a long distance from TN but if you have another event out there you might want to consider combining them.

## TURNING SOUTHERN STYLE

SEPT. 21-23, 2018

DALTON, GA

Distance is no excuse for not attending this Symposium as it's only 30 miles from Chattanooga. In one week-end you can gain a wealth of information on turning. This might be a good time to put this on your calendar for this fall. You can stay in Dalton or drive back and forth daily.

# Free personalized help in Turning



Ed Lewis has been turning for 42 years and has graciously offered to open his shop on Saturday mornings to help newbies. This is as good as it comes. Ed is not only skilled as a turner but an excellent teacher. Many TSW have gained valuable lessons from him over the years to where they are now very proficient. Call Ed at (423) 344-7295 or talk with him at the TSW meeting Sat. This is an official function of TSW.

# Next TSW Meeting Sat. Feb. 17, 2018

# Interview with TSW Member



Not everyone in Tri-state Woodturners has been turning forever with all kinds of experience. Jim Dvorak has only been turning about a year. After 12

years in the Navy Jim went to work for Westinghouse in the nuclear field. They sent him to Sequoia and he stayed for the next 32 years working in top management. He then spent a little time at Watts Bar before retiring a year ago.

Like many others, Jim often found himself working with wood. A number of years ago his wife gave him a Craftsman Pro lathe which is now getting lots of use.



Knowing some woodturners at work, like Josh Bowman, they encourage Jim to attend TSW, which really opened his eyes to the craft. The club has been Jim's greatest influence in learning

to turn and developing his skills.

Jim and his wife are very involved in their local church where he plays tuba in a band. He also plays in a couple other groups including the Chatt Community Orchestra and Cleveland Pops band. Another passion of Jim's is the Patriotic Guard Riders who provide escort service at the funeral for veterans. His first turning project was the holder for flags on the back of his motorcycle.



Spindle turning is a favorite for Jim and he finds his Craftsman tools that came with his lathe quite adequate. A jig that got a lot of use

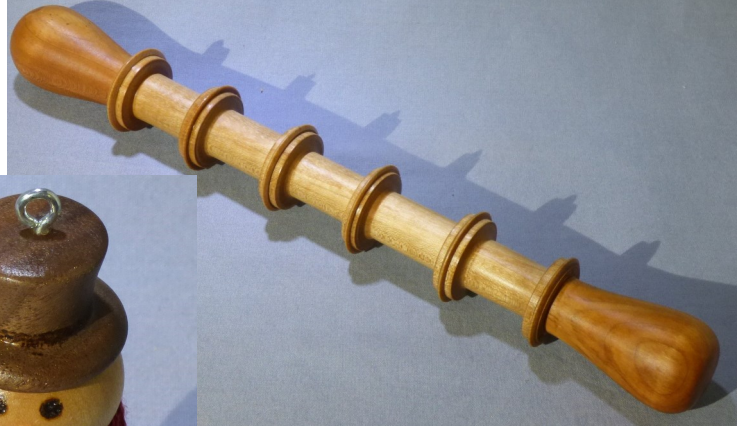
last year was the set-up on his old Rockwell/Delta band saw which he used to turn 107 pens for the troops and many Christmas gifts for friends and relatives. 4-5 nights a week Jim finds time to turn. A favorite finish is Watco Butcher Block finish and a favorite item turned would probably be the wedding goblet set he turned last year that was used in a relatives wedding.



# Club Challenge for Jan. - Spindle Project



Bob Hough



← Bev deYampert



↓ Doug Spohn

↓ Don Nelson

↑ Charles Jennings ↑

↓ John Dekle ↓



# Club Challenge for Jan. - Spindle Project



Jim Dvorak ↑  
Les Isbell →



Table at the top—Jerry Bowman



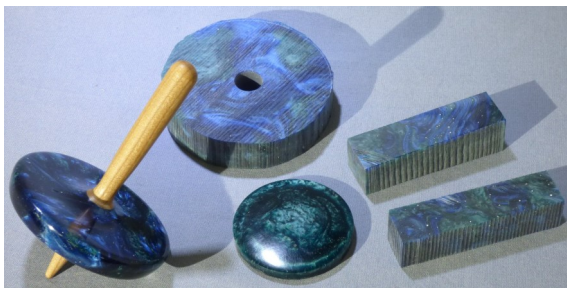
↑ Don Moore

# Challenge for Mar. is a Scoop

# Show, Tell & Learn - Instant Gallery



Items above crafted by John Dekle



← Doug Spohn

Don → Moore



# Show, Tell & Learn - Instant Gallery



↑ Top 20" bowl ↑  
turned by  
Alan Vandergriff  
← Les Isbell →  
↓ ↓ ↓



# Show, Tell & Learn - Instant Gallery



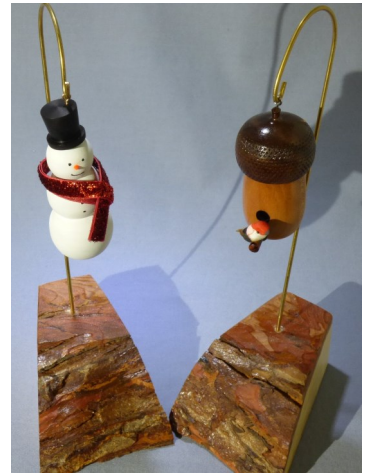
↑ Bob Hough ↑

↓ John Lucas

Rod Smith ↓



# Show, Tell & Learn - Instant Gallery



Charles Jennings —challenge projects for 2018



THE TOOL SHOP

# Cut Bowl Bottoms with Confidence

By Bill Small

## With These Three Easy-to-Make Depth Gauges

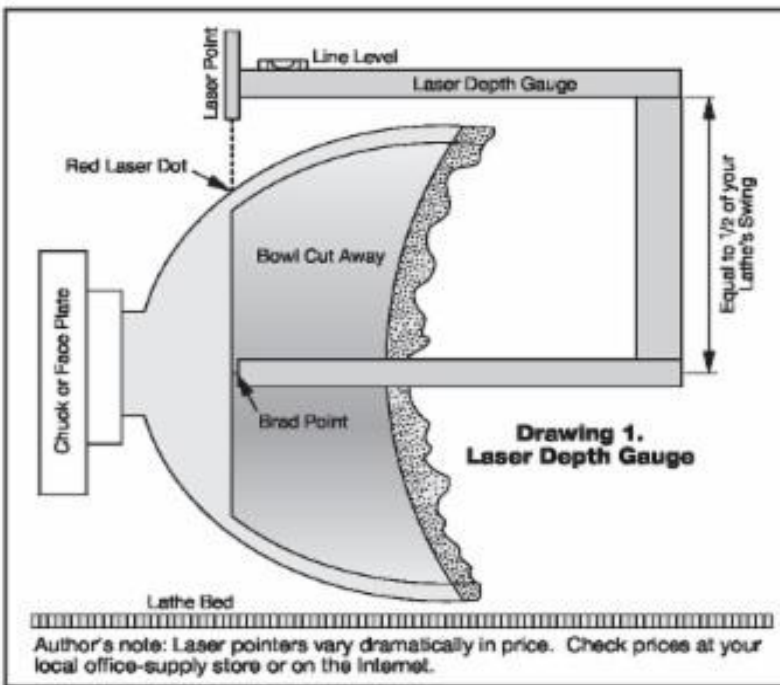
All of us have blown through the bottom of a bowl or left a chunky bottom for fear of cutting any deeper. Determining the exact thickness of a bowl bottom is particularly difficult with a natural edge bowl or one with a foot that has a recess cut into its underside. The three depth gauges described here take the guesswork out of these challenges. And the bonus: Each is easy and inexpensive to make.

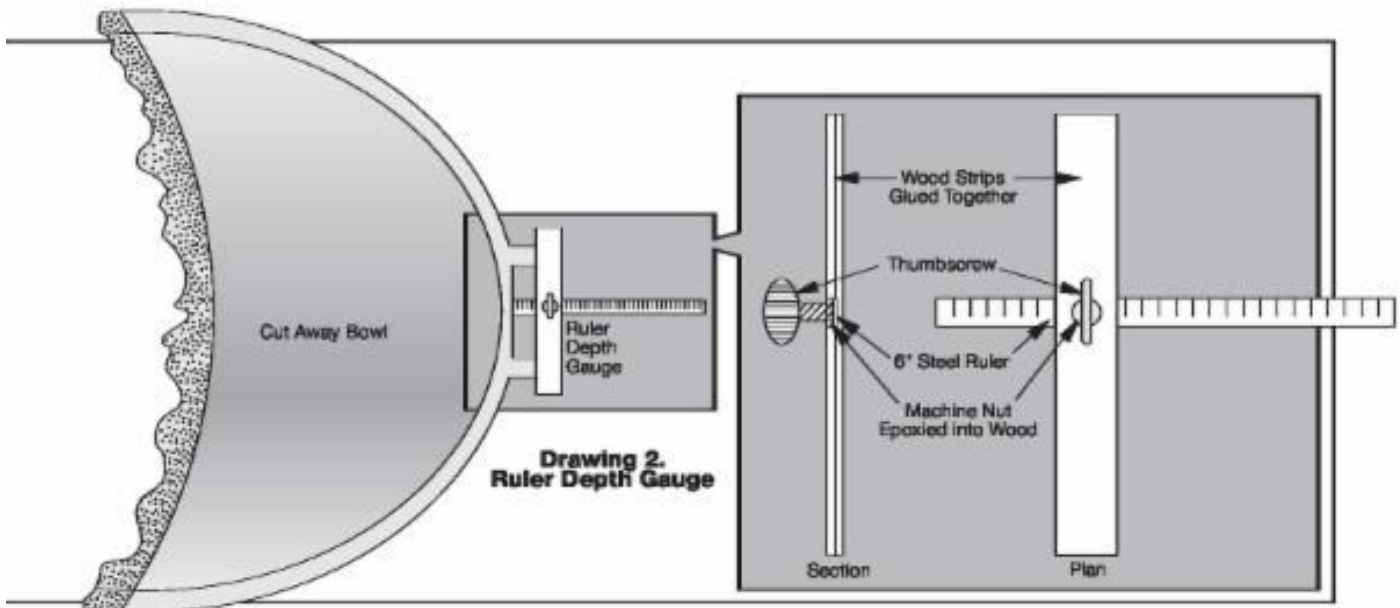
### Ruler Depth Gauge

If your bowl has a foot with a recess, you need another way to determine the depth of the recess (on or off the lathe). Drawing 2 shows a simple gauge made using a 6" steel ruler, two wood strips, a 10-24 x 1/2" thumbscrew and matching machine nut. Cut a channel in one wood strip to hold the ruler. In the other strip, drill a hole and epoxy the nut in place. Then glue together the two wood strips. Make wooden cross members of varying lengths to accommodate bowl feet of varying diameters.

### Laser Depth Gauge

Grab this C-shaped gauge to locate the inside bottom while the bowl is mounted on the lathe. You can use it when initially cutting a green wood bowl blank or when re-turning a dry blank into final form. A laser pointer (see author's note at right) is mounted on the frame so that the laser dot hits the outside of the bowl at the same depth as the inside cut. The key is to have the laser beam perpendicular to the lathe bed to get an accurate reading. You can achieve this alignment with a plastic line level glued to the top of the frame. A brad point helps keep the frame aligned to the bowl bottom while in use. As long as the frame is lightweight and resilient, you can build it from wood, metal, or plastic.

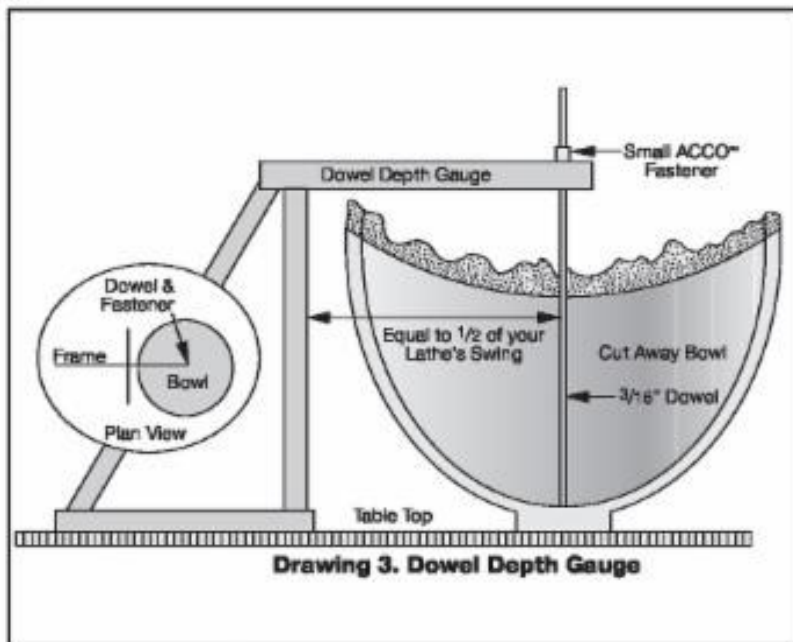




### Dowel Depth Gauge

Use this gauge to locate the inside bottom when the bowl is off the lathe. Set the bowl on a tabletop with the gauge's frame extending over the bowl as shown at right in Drawing 3. Note that you'll need to construct the frame (made from wood, metal, or plastic) with at least three feet on the tabletop for stability.

Pass a  $\frac{3}{16}$ " dowel through a hole in the frame and lower it until it hits the bowl bottom. Slip a small ACCO™ fastener (available at office supply stores) over the dowel and resting on the frame. Lift up the dowel and remove the bowl. Lower the dowel until the fastener again rests on the frame. The distance between the end of the dowel and the tabletop indicates the thickness of the bowl bottom.



Bill Small (williamsmall@comcast.net) lives in Danville, CA and is president-elect of the Bay Area Woodturners Association.

## Notes from Demonstrator

# TURNING A CANDLE HOLDER AND APPLYING MILK PAINT

by Wayne Loveless

### Stock preparation:

Start with a blank of wood that is four inches square by roughly seven inches long. Mount the blank between centers and turn to a round cylinder. Turn a 3/8 inch long tenon on what will be the top of the candle holder to receive your chuck. Mount the piece into the chuck and make a cut across the cylinder to true the cylinder.

### Turning the candle holder:

With the blank mounted in the chuck turn a recess to fit your chuck on the opposite end of the headstock. Reverse the blank into the recess you just turned and remove the tenon. You are now ready to turn the cylinder to its final shape. Sand to 220 grit being careful not to round any “crisp” transitions.

### Applying Milk paint and glaze ( All Finishes are General Finishes Product)

Apply your base coat of Millstone color water base milk paint. (Woodcraft item #Item 828545) After base coat dries, sand with 0000 steel wool. Next step is to apply the Van Dyke Brown glaze. (Woodcraft item #Item 825785). This is done by using the “dry brush” technique. Simply load the tip of your brush with the glaze paint and dab it off on a dry paper towel. Repeat this step again using the Winter White color glaze (Woodcraft item #Item 825779).

## Announcements

1. The TSW Board have been working to come up with a way to structure the “Show, Tell and Learn” portion of the meetings to be educational and yet not boring. We want to try a new approach to see if it will enhance this part of the meetings. Both the Challenge and Instant Gallery pieces will be displayed—possibly in a couple locations to lessen the congestion that currently exists. Pictures will again be shown but basically it will be a quick review of pieces submitted. Participants will have opportunity to speak about ONE piece IF IT HAS SOME UNIQUE FACTOR. What does this mean for you? When you bring items to show you need to fill out the new sign-in sheet. If you have something helpful to share A. indicate that to John Dekle when he takes the pictures so he can mark the item accordingly. B. Know what you want to share and do it in a succinct way. Keep it brief and clear and speak up so everyone can hear.
2. Be prepared to sign-in each piece you bring with the type of wood and finish used. This will help move things along quickly and yet allow for it to be educational.
3. Feel free to share comments with any TSW officers regarding the Show, Tell and Learn. Remember we have a pretty wide variety of experience which makes it hard to please everyone.
4. **Ed Langham**, life time member of TSW is recovering at home following a heart attack in Knoxville this past month. He was sent to the hospital in Chattanooga and then taken home. As of 2/14/18 he says he is doing well with no pain and doing minimal things around the house. He even went out to his shop yesterday. Ed sends his regards to the club. Your prayers and words of encouragement would be appreciated.