



Meeting Info:

Meeting location:
8361A Dayton Pike
Soddy Daisy, TN
(Horsin' Around)
At 1:00 p.m.

IN THIS ISSUE

Feb. Demonstrator	1
Jan. meeting	2
President's Corner Officers	3
Sponsors Mentors	
Treasurer's report The Web Club challenges 2022	4
Safety	5
AAW Symposium	6
Announcements	7
Sawdust Session	8
Show & Tell Pictures	9
Demo Notes/Resources	13
Membership form	14

Feb. Demonstrator

Allen Quandee

I have always been captivated by the spiritual beauty inherent in nature and wood. Although my work has won numerous awards it is my desire that my work speaks to you, or stirs an emotion or feeling.

I am especially drawn to the process of creating art on the lathe, although I also enjoy other forms of working with wood, especially band saw jewelry boxes.

From the initial experience of turning my first piece over 25 years ago, I was hooked. My goal is to produce art in simple, classic shapes whether it be polychromatic segmented or pieces pierced with intricate patterns.

My work consists of many different styles and techniques of woodworking. To grow as an artist I feel it is important to constantly explore and experiment with different styles and techniques.

The demo this Saturday will be about segmented turning also known as polychromatic turning.

With segmented turning, the size and patterns are limited only by your imagination and size of your lathe and you don't have to wait months for the wood to dry. I have said for years "the Chinese and Native Americans have been stealing my designs for thousands of years".



Tri-State Woodturners
An official AAW chapter



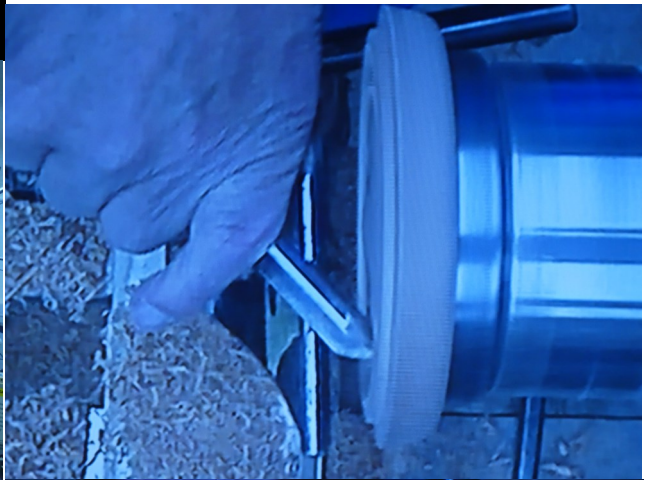
While the vast majority of segmented turnings are vessels of one sort or another, strictly speaking, any turned object comprising multiple pieces of glued wood could be classified as a segmented turning. Examples include pens, bowls, vases, salt mills, pepper mills, and rolling pins.

You can ask 10 segmented turners the best method for segmenting and get 25 different answers.

There are different types of segmenting, "closed/ring, open, stave, bowl from a board and stacked laminated", all of which I have done. This demo will be focusing only on closed/ring segmenting. I will be demonstrating the method I currently use, which has evolved over 25+ years of segmenting. I will also be showing a few "best methods" I use for the same tasks such as designing, gluing the segments together and gluing the piece for turning.

Jan. Demonstation

John Lucas is a regular demonstrator for TSW showing us how to turn a hand mirror that can be an heirloom. John is known for turning fabulous hand mirrors and is an excellent teacher. In addition to turning the mirror he talked about tool control and techniques useful for all either as new info or reminders of things helpful in helping attendees become better turners. Thanks John for an excellent demonstration in January.





President's Corner

As you all know, the international AAW symposium is coming to Chattanooga in June. We have a great opportunity to support not only the AAW and our craft, but also to support our community economically as the symposium will bring a significant amount of revenue into the Chattanooga area. I encourage all of you to volunteer to work at the symposium this summer. You can sign-up via the AAW website for specific time slots and volunteer groups during the symposium. We still need two lead volunteer positions filled. They are the registration lead and the youth turning group lead. If you

are interested in either of the lead positions, please contact me or talk to me about it during our meeting this Saturday. I want to thank those of you that attended our lead volunteer kickoff at the convention center a few weeks ago. It was enjoyable and I hope it benefited you as much as it did me.

I encourage you to continue supporting our service projects, the pens for troops and Christmas ornaments for the food bank. Be safe and keep those lathes turning.

TSW CLUB OFFICERS

- Jim Dvorak** President
(423) 883-2212 dvorak6258@epbf.com
- Josh Bowman** Vice President
(423) 280-0954 jsbowman@bellsouth.net
- John Fortmiller** Treasurer
(423)280-5904 Leowen@Epbfi.com
- John Dekle** Secretary/Newsltr Editor
(423) 508-8051 Turning411@Yahoo.com
- Doug Spohn** Program Director
(423) 240-4386 djspohn@epbf.com

Most above officers are official
Tri-state Woodturner Mentors



TSW club meeting is
Feb. 19th (1:00)
At Horsin'Around

NEW MEMBER MENTOR: Are you new to wood turning or at least have an interest in it? TSW provides an opportunity for you to learn from other turners who will be willing to give you personal instruction and guidance. There is no fee for this instruction for TSW members. Contact one of the listed officers who will guide you to select a helpful mentor for you.

The following sponsors give generously to Tri-State Woodturners and we want to encourage members to support them generously



5824 Brainerd Rd., Chatt. TN 373411 + (423) 710-8001

CUTS AND SCRAPES



CRAFT SUPPLIES USA
THE WOODTURNERS CATALOG

www.woodturnerscatalog.com +(800)551-8876

Treasurer's Report



The Web

Beginning Balance Nov		3,664.53
Income		2,388.33
Dues	880.00	
Raffle	188.00	
Ornament Sales	700.00	
Silent Auction	620.33	
Expenses		879.03
Demonstrators	800.00	
Xmas Party	79.03	
Ending Balance (Jan. 31)		5,173.83

I found this video on sharpening negative rake scrapers that will be interesting and useful, if you follow this link:

<https://d-waytools.com/video-library/>

Click on the link for Negative Rake Scaper Use and Sharpening near the bottom of the videos. The Boxmaster tools are now sold by D-Way tools. Their web-site will also have some good videos that you will find helpful..

Pass along good web-sites for the newsletter.

2022 TSW Club Challenges

Turn the item the month before as a sample for new turners or turn the item for the month but the same item cannot be used twice or two months in a row. (Example in March turn a mallet for a sample of what a new turner could turn in April.) There is a wide spectrum available to be as simple or complex as you want and your skills allow. If you are a confident turner you can help new turners by submitting ideas for them to do the following month.

- Jan **Multi-media** (more than 1 material, i.e. species of wood, wood & acrylic or metal) (8)
- Feb **Garden** (useful item for gardening or for the garden)
- Mar **Multi-finish** (more than 1 item, could be a combination of items)
- Apr **Workshop** (something to be used in a workshop handle, jig, mallet, etc.)
- May **Bowl** for symposium (donation for the Empty Bowl project)
- Jun **Kitchen** (things that could be useful in the kitchen, spurtle, spoon holder, handle, etc)
- July **Sports** (related to a sports team or to use in a sport)
- Aug **Home** (anything useful for a home, art, clock, lamp, door stop, stool, etc.)
- Sept **Jewelry** (necklace, ear ring set, ring, shawl pin, ring holder, etc)
- Oct **Ornament** (be creative try something unique)
- Nov **Personal** (gift for someone, something a person could use)
- Dec **Silent Auction** (to be donated for the Christmas dinner)



Safety Tips

Safety is YOUR Responsibility.

- Use a full face shield when ever the lath is turned on.
- Tie back long hair, do not wear gloves, and avoid loose clothing objects that may catch on rotating parts or accessories.
- Always check the speed of the lathe before turning it on. Use slower speeds for larger diameters or rough pieces, and higher speeds for smaller diameters and pieces that are balanced. Always start a piece at a slower speed until the work piece is balanced. If the lathe is shaking or vibrating, lower the speed. If the workpiece vibrates, always stop the machine to check the reason.
- Check that all locking devices on the tailstock and tool rest assembly (rest and base) are tight before operating the lathe.
- Position the tool rest close to work, almost touching the wood. Check tool rest position often and as wood is removed, turn off the lathe and re-position the tool rest.

Useful Ideas, Tips, Tools & Techniques

Gouges, skewes, scrapers, parting tools etc. are used constantly while turning. Keeping them close at hand to easily use them and yet providing safety in the working area is critical. Large rolling tool chests with many drawers is a potential for tool storage. Some drawers could contain similar tools i.e. bowl gouges or tools of the same maker like Easy Wood Tools. Caps and covers for tools help protect the sharp tool edges from damage or personal injure.

These tool boxes are within easy reach of the lathe giving immediate access to any turning tool needed.



CUTS AND SCRAPES



AAW Symposium

What does it mean to be the Symposium Host?

It is an honor to be selected as the host city and club to host this international event. Honestly, it also means a lot of work to make it a successful event. AAW would not have selected us to host this event if they did not believe we could do it. Let's show them and all attending we are capable of the task.

There could easily be 15-1600 people attending the 2022 Symposium. If you have ever been involved in large conventions you know this is a very daunting task but if we all pitch in and help it will be an exciting adventure and very rewarding.

How can you help?

There really is something everyone can help with and it will take all of us to do this successfully. On the TSW web site is a list of all the lead positions. Someone is needed to volunteer for each of these plus volunteers to help them. PLEASE look over the list and find your place. Then let Jim Dvorak know how you will help. (423) 883-2212

The AAW Symposium is a tremendous opportunity to attend. Often it is expensive, having to travel to it plus a hotel and the registration fee but it is very worthwhile attending. The benefits are extraordinary. Due to covid-19, the in-person symposium had to be cancelled and was being done on-line via Zoom the past two years. It's not quite the same as being at one in person but was valuable for all who attend. You are highly encouraged to register and take advantage of the symposium in Chattanooga this year.



While the AAW Symposium is a great opportunity for us and the city of Chattanooga, it also will require a lot of volunteers both from our club and others, even non-turners. In order to volunteer it will be extremely helpful to have people volunteer in advance. To volunteer click on this link <https://www.woodturner.org/Woodturner/2022Chattanooga/2022-AAW-Symposium---Chattanooga--Tennessee.aspx?d12524dfc095=8#d12524dfc095> then click on the "sign up!" box.

Dates: June 23 - 26, 2022

Mark your calendar now
Reserve these dates
You will be needed

June 2022						
S	M	T	W	T	F	S
			1	2	3	4
5	6	7	8	9	10	11
12	13	14	15	16	17	18
19	20	21	22	23	24	25
26	27	28	29	30		

Announcements

MEETING DAYS

At the January meeting it was voted on to change the meeting days as follows:

October—March continue meeting on the third Saturday of the month at 1:00 p.m.

April—September meet on the third Thursday of the month at 6:30 p.m. (During these months of Daylight Savings gather at 6:00 for fellowship & visiting and the meeting would actually start at 6:30 and target ending by 8:30 p.m.)

SAWDUST SESSIONS

They will meet at various members workspace on the Saturday following the meeting at 10:00 until noon unless announced differently. Place to be announced in the newsletter each month prior. If interested in hosting one contact Doug Spohn.

SYMPOSIUM VOLUNTEERS

It is a rare opportunity to get to have the AAW Symposium in our city. We are the Volunteer state so let's maintain that status and help by volunteering to help make the AAW Symposium a success in Chattanooga. Our club may be small but let the world see we are generous.

MEMBERSHIP

You can be a big help by taking care of you membership dues at the Feb. meeting or by mail before the end of the month. AAW is asking for the number of members and a couple companies offer gift certificates or discounts for TSW members. These matters need to be taken care of this month so PLEASE help by joining this month. A membership form is available at the last page of this newsletter. However, if you have been a member you can avoid filling out the membership form by confirming your info at the next TSW meeting.

Sawdust Session

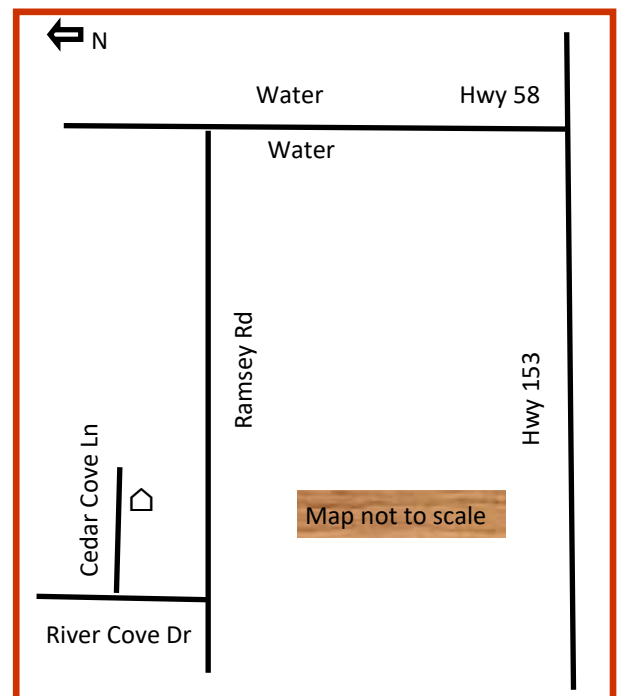
These informal sessions held in the workspace of one of the TSW members for people to gather and talk about any pertinent issue or get help in an area of their choice. At the January session, meeting in Charles Jennings studio, 9 people turned out. We got to see how his workspace was organized. Seth got to get some personalize instruction on turning a bowl. Others discussed sharpening of specific tools and other issues related to turning. It was also a good time of fellowship with other turners and spouses.



Next Sawdust Session Feb. 26

Saturday Feb. 26 from 10:00 to noon you are welcome to attend. This will be an informal get-together. If you have questions bring them. If you have tools needing sharpening bring them. Would you just like to have some fellowship with other turners this will be a good opportunity for that. If you have questions about something you are making bring it along.

DIRECTIONS: It is a pretty direct shot to John Dekle’s workshop. From Hwy 153 drive north on Hwy 58 about 10 miles. After Hunter Rd you go over water (both sides of the road). The next left goes to Harrison Bay State Park, go past that to the next left. Turn left on Ramsey Rd and go 1 mile. Turn right into River Cove subdivision and immediately turn right onto Cedar Cove Ln (short cul-de-sac). 4th house on the right. Plenty of parking down the driveway. 6310 Cedar Cove Ln, Harrison, TN (423) 364-1268



Show and Tell



Top three items
made by
Allen Quandee



Bottom three created by
John Dekle



Show and Tell



This whole page of items were created by Charles Jennings



Show and Tell

Designed and turned
by Jerry Schnelzer



Doug Spohn
made these
items



Turned by
Don
Moore



Show and Tell



Gary
Farlow's
Duck Call
& Bowl



Pens made by
Seth Eichenberger ↓



Pen, Vases, & Candle holder
made by Jerry Bowman



Cuts and Scrapes

Segmented Turning

Allen Quandee - 678-454-0282

Formulas

Circumference = Diameter * Pi (3.1415)

Segment Length = Circumference / Number of Segments

Segment Width = (Outside Dia. – Inside Dia.) / 2

Segment Angle = 360 / (2 / Number of Segments) or short cut

Segment Angle = 180 / Number of Segments

Board Length = (Segment Width * # Segments) + Fudge Factor

Fudge Factor = 2 – 3 Inches to keep fingers away from saw blade

Software (that I use)

Woodturner Pro 3d Pro (free)

<https://woodturnerpro.com/software/woodturnerpro.htm>

Hose Clamps

Home Depot / Lowes / Hardware Stores - HoseXpress

www.hosexpress.com/clampsandtools/wormgearclamps.htm

Books

Segmented Turning A Complete Guide by Ron Hampton

ISBN 1-86108-337-8

The Art of Segmented Woodturning by Malcolm Tibbetts

ISBN 0941936-86-4

Woodturning with Ray Allen by Dale L. Nish

ISBN 1-56523-217-8

Web Sites

Kevin Neeley www.turnedwood.com

Malcolm Tibbetts www.tahoeturner.com

Printable Graph Paper <http://print-graph-paper.com>

Segment Calculator www.jackmanworks.com/shop/jackman-segmented-ring-calculator/

Tri-State Woodturners Membership Form

PLEASE print or write legibly and complete each area - Thank you!

Name: _____

Address: _____

Email: _____

Phone 1: _____ Phone 2:(cell) _____

Member's website (if you have one): _____

May the above info be placed in the club directory on line? (check one) Yes No

Would you consider yourself a: Novice Confident Advanced woodturner

Year you started turning: _____ Would you be a mentor? _____

Type of lathe(s) you own and use: _____

Year you first joined TSW: _____ Are you currently an AAW member?: Yes No

**MAIL THIS FORM WITH YOUR CHECK (to: Tri-state Wood Turners) with \$40 TO:
TSW C/O, Dr. John Dekle, 6310 Cedar Cove Lane, Harrison, TN 37341**

.....
do not write below this line

Dues paid	date:	Amt:	date form updated
-----------	-------	------	-------------------