

Meeting Info:

Meeting location:
8361A Dayton Pike
Soddy Daisy, TN
(Horsin' Around)
At 6:30 p.m.

IN THIS ISSUE

June Demonstration	1
May meeting	2
President's Corner Officers	3
Sponsors Mentors	
Treasurer's report	4
The Web Club challenges 2022	
Safety	5
AAW Symposium	6
Sawdust Sessions	7
Useful Ideas TTT	
Show & Tell Pictures	8

June Demonstration Finishes



Tri-State Woodturners
An official AAW chapter

What kind of finish do you like to see on turned items? I've heard some say they like shiny finishes while others say they don't like the plastic look of shiny finishes. Some feel men prefer the look of wood while women like the high gloss look. That's just the opinion of what the final product looks like.

Another aspect is the ease or difficulty of applying the finish. Some finishes can be nearly instant while others take days to apply. Some finishes are added to the top or surface of the turned items. Other finishes such as oils penetrate the surface of the wood.

How durable is the finish? The type of item may determine the need for durability. Some items need to withstand a lot of handling and use while others may simply be artistic that will be primarily viewed. Is the turned item destined to be sold? Some finishes are better for items headed to the marketplace. Considering the end user or person who will purchase products will play an important part in the decision of finish.



One of the most popular demonstrations in the past for TSW has been how to apply various finishes. Charles Jennings will be showing attendees how to apply durable finish with a slow turn apparatus. John Dekle will be discussing and demonstrating a CA and boiled linseed oil and the use of a Beall buffing system. Doug Spohn will present using spray finishes. These displays will provide a lot of practical help and opportunity to discuss various types of finishes. If you have questions about finishes this might be a great way for find a solution.

May Demonstration



There is a current trend toward casting resin for turning projects so in May John Dekle presented a simple demonstration on how to get started casting resin and using a pressure pot.

He began with a PowerPoint presentation discussing safety, types of resin and how they work. Various molds were shown and how to color the resin. He talked about tools needed to do this type of turning. Projects were shown and resources available to help beginners. The presentation showed how to remove projects from the pressure pot, tools for turning and a finish easy to use. How to get ready to pour resin with an order for steps to do so with success was discussed.



Finally, John turned a resin project previously cast and finished it. A request was made to post the PowerPoint presentation on the Club website which was done and can be found at www.tristatewoodturners.com.





President's Corner

Well, it is almost here, the Chattanooga AAW Symposium. If you have not signed up to volunteer to help during the symposium week, I strongly urge you to do so. It is a great opportunity to help promote our craft as well as meet other wood turners from around the world.

symposium. After the symposium, TSW will periodically meet with Signal Center clients to continue the instruction. If you are interested in supporting this program, please talk to me about it.

Please continue to support our service projects, pens for troops, Christmas ornaments, and beads of courage boxes (up until the symposium). It is not too early to start making Christmas ornaments, so let's get those lathes turning.

As mentioned in the last newsletter, we will be partnering with the Signal Center to continue a wood turners mentoring program that will be initiated during the

TSW CLUB OFFICERS

Jim Dvorak President
(423) 883-2212 dvorak6258@epbfi.com

Josh Bowman Vice President
(423) 280-0954 jsbowman@bellsouth.net

John Fortmiller Treasurer
(423)280-5904 Leowen@Epbfi.com

John Dekle Secretary/Newsltr Editor
(423) 508-8051 Turning411@Yahoo.com

Doug Spohn Program Director
(423) 240-4386 djspohn@epbfi.com

Most above officers are official
Tri-state Woodturner Mentors



**TSW club meeting is
June 16 (6:30)
At Horsin'Around**

NEW MEMBER MENTOR: Are you new to wood turning or at least have an interest in it? TSW provides an opportunity for you to learn from other turners who will be willing to give you personal instruction and guidance. There is no fee for this instruction for TSW members. Contact one of the listed officers who will guide you to select a helpful mentor for you.

The following sponsors give generously to Tri-State Woodturners and we want to encourage members to support them generously



5824 Brainerd Rd., Chatt. TN 373411 + (423) 710-8001

CUTS AND SCRAPES



www.woodturnerscatalog.com +(800)551-8876

Treasurer's Report



The Web

Beginning Balance April		5,551.83
Income		127.00
Dues	80.00	
Raffle	47.00	
Expenses		00
Ending Balance April		5,678.83

Along the same theme as our demonstration this month of finishes there are literally hundreds of online presentations of finishes. Any type of finish you might be interested in is probably covered on some YouTube channel or other media. Simply type into your browser "how to finish woodturning projects" and you will have lots from which to choose. Select a couple and focusing on learning them well may be more beneficial than constantly trying different ones. Remember a finish does not improve your turning skills.

2022 TSW Club Challenges

Turn the item the month before as a sample for new turners or turn the item for the month but the same item cannot be used twice or two months in a row. (Example in March turn a mallet for a sample of what a new turner could turn in April.) There is a wide spectrum available to be as simple or complex as you want and your skills allow. If you are a confident turner you can help new turners by submitting ideas for them to do the following month.

- Jan **Multi-media** (more than 1 material, i.e. species of wood, wood & acrylic or metal) (8)
- Feb **Garden** (useful item for gardening or for the garden) (7)
- Mar **Multi-finish** (more than 1 item, could be a combination of items) (6)
- Apr **Workshop** (something to be used in a workshop handle, jig, mallet, etc.) (4)
- May **Bowl** for symposium (donation for the Empty Bowl project) (3)
- Jun **Kitchen** (things that could be useful in the kitchen, spurtle, spoon holder, handle, etc)
- July **Sports** (related to a sports team or to use in a sport)
- Aug **Home** (anything useful for a home, art, clock, lamp, door stop, stool, etc.)
- Sept **Jewelry** (necklace, earring set, ring, shawl pin, ring holder, etc)
- Oct **Ornament** (be creative try something unique)
- Nov **Personal** (gift for someone, something a person could use)
- Dec **Silent Auction** (to be donated for the Christmas dinner)

Safety Tips



For the past five years, AAW has continued to monitor reports of death and serious injury resulting from the technique known as fractal burning. The AAW Board of Directors established a policy prohibiting this practice across all areas under AAW's control in 2017.

Following two recent deaths in Wisconsin attributed to fractal burning, AAW's Safety Committee, which is responsible for promoting safe woodturning practices, again wants to raise awareness in the woodturning community about the inherent dangers surrounding this technique.

From the AAW Safety Committee

Fractal Burning Kills; AAW Reiterates the Dangers

The AAW Board, through its Safety Committee, wants to re-emphasize the dangers associated with the process known as Lichtenberg, or "fractal," burning, an embellishing technique that uses high-voltage electrical current to burn patterns on wood. This often unsafe, life-threatening practice has once again surfaced in the news and on social media, following a two-victim incident in April 2022.

In 2017, the AAW Board of Directors voted to ban any fractal-burning demonstrations and equipment sales at AAW-sponsored events. The ban prohibits displaying fractal-burned pieces at any AAW-sponsored event and promoting the practice via articles in AAW publications. Sadly, since the AAW Board adopted its policy on fractal burning in 2017, there have been thirty-three reported deaths directly attributed to fractal burning, and an unknown number of injuries and close calls

Learn About the Hidden Dangers

Fractal burning poses a significant hidden risk of electrocution. It speaks volumes that there are no UL-rated fractal burning units commercially available. Many of the YouTube videos that show how to build these devices at home do not adequately address the inherent safety concerns. Many users think they are being safe, but the number of serious injuries and deaths says otherwise.

To learn more about what makes fractal burning dangerous, [visit the AAW website](#). This webpage lists known deaths, the AAW's official position on fractal burning, as well as other resources.

AAW Chapters Take Note

The AAW Board's 2017 policy explicitly extends its position to its chapters: **"AAW-chartered chapters are strongly urged to refrain from demonstrating or featuring the process in chapter events."** Yet the practice persists at the chapter level. The AAW Safety Committee, with endorsement from the Board of Directors, requests once again that its members and chapter leaders join in the AAW's efforts to discourage the use of fractal burning. Do not promote the practice via newsletter articles or social media posts, and do not allow fractal-burned pieces to be displayed in instant galleries, exhibitions, at chapter meetings, or on chapter websites.

Further, due to liability concerns, **the AAW Board has decided to disallow chapters that promote, demonstrate, or allow the use of fractal burning to be eligible to obtain, or renew, insurance through the AAW for their chapter.**

—AAW Safety Committee: John Beechwood III (Chair), Steve Pritchard, Kevin Jesequel, Kent Crowell



AAW Symposium

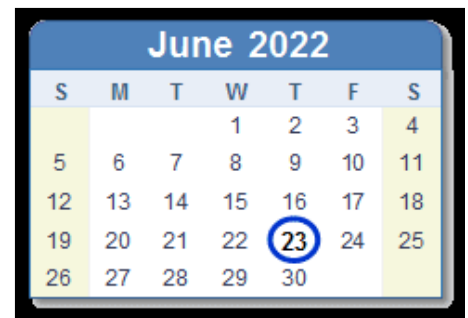
How can you help?

Thank you for your generous support to loan tools and supplies for the symposium at the last TSW meeting. This is a big help. If you forgot what you offered or need info on when or how to get things to Alan please contact him at the meeting Thur or contact him at [423-400-3499](tel:423-400-3499) or alanvandegriff@hotmail.com

While the AAW Symposium is a great opportunity for us and the city of Chattanooga, it also will require a lot of volunteers both from our club and others, even non-turners. In order to volunteer, people need to go to <https://www.woodturner.org/Woodturner/2022Chattanooga/2022-AAW-Symposium---Chattanooga--Tennessee.aspx?d12524dfc095=8#d12524dfc095> then click on the "sign up!" box.

Mark your calendar now Reserve these dates

June 23-26, 2022



Empty Bowls

Turners attending the AAW Symposium from around the world will donate bowls which are sold during the Symposium for \$25. The proceeds from this sale go to a local charity. It has been decided the Friends of Special Children in Chattanooga will be the recipient of this project. TSW members are encouraged to donate bowls for this project which is the challenge for this month.



Don't live with regrets. This is a once in a lifetime opportunity to attend an AAW Symposium right in your own community.

Next month the opportunity will be gone!

Register NOW and take advantage of having this event right here in our own town.

Sawdust Session

The May Sawdust Session was held at John Dekle's shop where we opened the pressure pot from Thurs. and some tried making a Celtic knot..



No Sawdust Session in June since AAW Symposium follows the week after our club meeting

Useful Ideas, Tips, Tools & Techniques

The layout of a workshop will be very personal. For one person, "everything has a place and everything should be in their place", while another may just have general areas for items. For the second type taking time to put everything in a certain place would be stressful and the first type might find hunting for items very stressful. The 3,000 square foot work space will have different logistics over the a work area of 300 square feet. The variety of work a person does in their work area will also bring another element into the layout of the shop or studio. If space is needed for painting that is dust free with a lot of ventilation that would change the layout verses a person who only applies a quick finish on the lathe.

There are some things to consider regardless of your personal preference and the type of work you do. For example, what tools are used the most? Situating them close together will be advantageous in having an efficient work space. While this has been referenced previously in this column it is a good reminder and relates closely to layout.

Where do you do your planning for the items you are going to create? Benjamin Franklin is credited with saying, "Failing to prepare, is preparing to fail". Planning is essential in producing good products. Proper planning requires space and tools for accomplishing this task. That might be on a work bench, table or desk. Where is that in your work space layout? Do you have available tools for that task such as paper, pencils, erasers, ruler, templates etc. Are those designs or patterns kept for future reference? If you want to duplicate something in the future, saving plans may save a lot of time. If something does not turn out, or once it is finished you see improvements that could be made, the plans can be tweaked or modified for the next time it is made.

Show and Tell



Pens for the Troops donated by Charles Abercrombie

Bowl turned by Jared Bruckner



Lanterns and Pens for the Troops made by Jerry Bowman



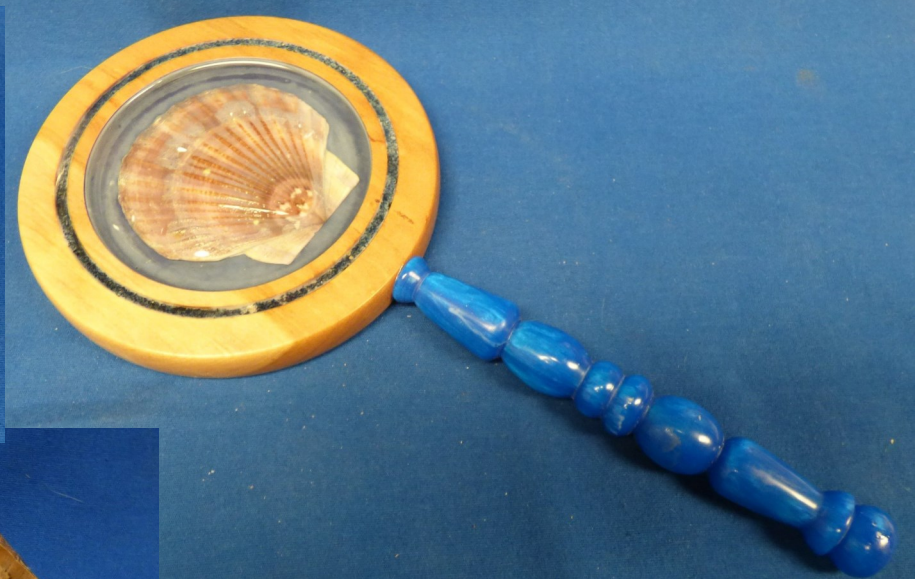
Show and Tell



All of the items
on this page
were created by
Charles Jennings



Show and Tell



All the projects above were created by John Dekle

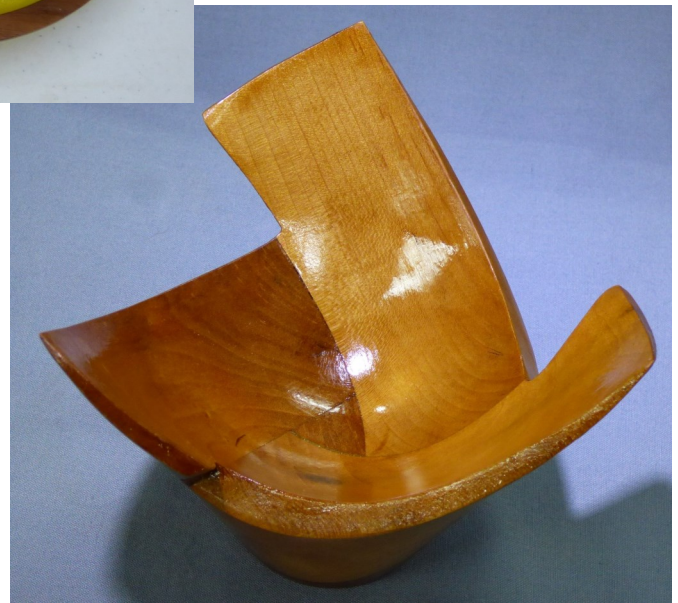
Pens turned by Seth Eichenberger →

Show and Tell



← Projects made by Doug Spohn

Pipe Wrench & 3 Winged Bowl (below) created by Johnny Renfro



← Bowl & Pens for Troops ↓ by Roger Kent



Show and Tell

This page all
created by
Les Isbell

