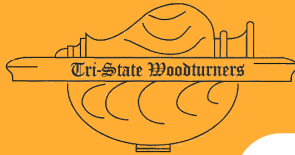


TRI-STATE  
WOODTURNERS



**PRESIDENT:**  
**Josh Bowman**  
(423) 280-0954  
jsbowman@bellsouth.net

**VP:**  
**Doug Spohn**  
(423) 240-4386  
djspohn@epbf.com

**SECRETARY:**  
**John Dekle**  
(423) 508-8051  
Turning411@Yahoo.com

**TREASURER:**  
**Barbara Suarez**  
(423) 855-4149  
drag0n0wl1955@gmail.com

**Meeting Location:**  
8361A Dayton Pike  
Soddy Daisy TN

**IN THIS ISSUE**

Mar. demo	1
Feb meeting	2
Sawdust Session	3
Treasurer Report	3
Challenge, Lathe sale & President's	
Pens & Web	5
Challenge Pics	6-7
Show & Tell Pics	7
Caliper pattern	11
CA Glue	12
Hand Adze	13

# Cuts and Scrapes

WWW.TRISTATEWOODTURNERS.COM

MARCH 2017 NEWSLETTER

## Tommy Hartline

### March Demonstrator



Tri-State Woodturners an  
official chapter of AAW

Tommy Hartline from Atalla, Alabama is married to Donna Hartline and they have two sons and four granddaughters. He works at Gadsden State Community College where he serves as the Division Chair for Engineering Technologies and teaches Electronics.

He has been turning for about 9 years and was a founding member of the North Alabama Woodturners. He also is a member of the Alabama Woodturners Association, the Northwest Georgia Woodturners and the American Association of Woodturners. Some of the things he has turned are bowls, hollow forms and boxes, but his favorite things to turn are Christmas ornaments. He turns several styles including inside-out and segmented.



He has turned with Jimmy Clewes, John Jordan, Michael Mocho, Joe Ru-minski, Rudy Lopez, Don Russel, Kim-berly Winkle, Mark StLeger and many local turners. He is always looking to learn something new.

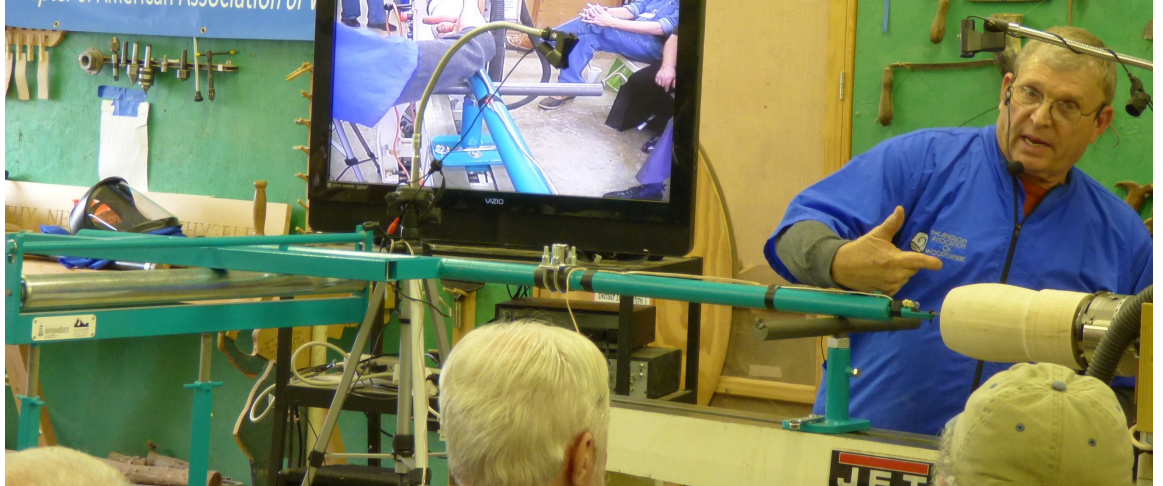
Tommy will be the featured demonstrator at the Tri-State Woodturners meeting this coming Saturday, March 18th 1:00 p.m. at Horsin' Around. He will be demonstrating how to turn a two piece hollow form. This is a fascinating way to turn very impressive objects without a lot of specialized tools.

***We are anticipating a great TSW meeting Sat so plan to be there - 1:00 March 18th***

***See you then.***

# February Meeting—Hollowing Systems

Doug began showing the Captive bar systems from relatively small ones like a Jamison to a massive one that is very stable and can bore quite deep into a vessel. He also showed the use of a light to determine the depth of cut and getting an even thin wall thickness



Thanks for  
Great  
Demonstrations



Doug Spohn, Josh Bowman Showed an articulating arm system and of course had some neat gadgets like the laser light & camera then Charles Jennings Showed hollowing economically with hand held & home-made tools

# Practical Sawdust Session



There was a great turnout for the Sawdust Session February 25th. Many members brought tools to sharpen and were able to learn how to properly sharpen their tools. With several sharpening systems available they could compare and try them out. While that was going on, two lathes were turning from 8—noon making pens for the troops. This was a learning time for most who had never turned a pen before.



## Another Sawdust session is planned for April 29

This time we want to have 5 lathes available with a monitor available at each one to help guide people through the process of turning a pen. All of these pen kits have been donated by Woodcraft as part of the Turn a Pen for the Troops. What a great way to show our appreciation for the troops serving our country.

When you arrive that Sat. you can select the type of slimline pen you want to turn and the wood for it which will already be cut and drilled. After gluing in the tubes and milling the ends you will go to a lathe to turn and finish it. Then assemble the pen and another will be complete

The session will be open from 9:00 a.m.—Noon at Horsin' Around. We would like to have someone available to set up the refreshments (coffee & donuts) and clean it up at the end. It would be helpful to have some take pictures too. If you have experience turning pens you could help as a lathe monitor guiding turners in how to turn, finish and assemble a pen. Monitors need to bring tools, including a pen mandrel, sandpaper and finish for pens. The purpose is to help turners, new to making pens, learn and become confident to turn pens in the future. Pen kits, wood blanks, pen press and refreshments will be provided by TSW.



# Treasurer's Report Apr-May Club Challenge

Starting Balance	5,027.94
Income	372.00
Dues	280.00
Wood Raffle	75.00
Snacks	17.00
Expenses	268.25
Subscriptions	132.25
Insurance	75.00
Snacks	41.00
Ending Balance	5,131.69

**April**      **Tooth Pick Holder**

**May**        **Magnifying Glass**

.....

## Powermatic 3520 Lathe for sale

This lathe has had off and on weekend use for about 5 years and I'm asking \$3125 which includes a tailstock swing away. I think that's a fair price. Lathe is in good working order. It's near Normandy, Tennessee and I would certainly consider assisting with or delivering the lathe in the Nashville area. Contact Noel Johnson for more information. My home email address is [noelj7767@gmail.com](mailto:noelj7767@gmail.com) and my cell number is 931.607.7767.

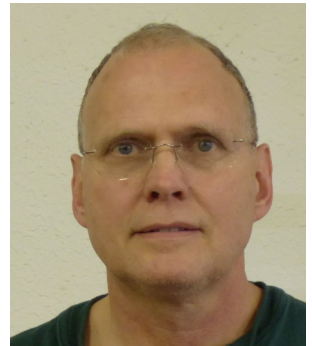
# President's Corner

Remember the February meetings presidents' challenge is a Gavel or Mallet.

Let's talk a bit about American Association of Woodturners (AAW) membership. Most organizations that you become a member of simply send out an occasional newsletter, and a few emails in a year. The AAW is nothing like that. It offers one of the best woodturning magazines available. They provide lessons and video's on turning, fundamentals, turning safety and a great forum to share ideas and get new ones. The AAW also offers grants, check out the three Jet lathes we own, yep that was from an AAW grant. It offers scholarships to some of the best woodturning schools in the United States. To top it off, membership is a bargain at just \$60 per year. Check the web address below for additional information: <https://aaw.site-ym.com/default.asp?page=JoinAAW>

On Thursday night Phil McDonald, President of the AAW, had an online meeting with chapter officers. In the meeting, he announced an exciting new opportunity for folks who have never been an AAW member. During the period of April 1, 2017 to June 30, 2017 a turner who has never been an AAW member can sign

up for full membership for 1 year at a 50% off rate of \$30, this includes a mailed copy of the American Woodturner magazine. It includes full access to the AAW website and all its publications! Folks that's a bargain. I would like to see our non-AAW members take advantage of this, trust me it's well worth it. Starting April 1 you can access the membership here: <http://tiny.cc/AAWNewGen>



In addition, he clarified the "Guest" membership is good for 60 days and has limited access to the AAW resources. It is open to new members at any time to kind of kick the AAW tires. You can check it out here by cutting and pasting this address in your browser: <http://www.woodturner.org/page/GuestMemberLanding>

Finally shop safety: You might not want to believe everything you hear, but when your lathe speaks experienced woodturners listen. So, stop the lathe and see what is it trying to tell you. What I mean is, as you're turning and expose deeper portions of wood, you might open a hole or crack in the wood. That will usually cause a difference in sound.

# Pens for Troops

If you have completed the kits you took, **please return them this Sat.** Woodcraft would like us to keep returning pens as they give us more kits to make. We have 100 more kits to distribute at the TSW meeting.

Remember TSW is having a friendly competition with the DAWG club to see which club can turn the most pens by Nov.



## The Web

Next month the Club Challenge is a tooth pick holder so here are a couple videos you can view for ideas:

[https://video.search.yahoo.com/search/video:\\_ylt=AwrBT8fp8b5Yc4UAiaVXNyoA;\\_ylu=X3oDMTE00T11ODc3BGNvbG8DYmYxBHBvcwMxBHZ0aWQDQjM2MDRfMQRzZWMDcGI2cw--?p=turn+a+wood+toothpick+holder&fr2=piv-web&fr=yfp-t#action=view&id=1&vid=3f2fc905f8e56de451ea0ab42d01849e](https://video.search.yahoo.com/search/video:_ylt=AwrBT8fp8b5Yc4UAiaVXNyoA;_ylu=X3oDMTE00T11ODc3BGNvbG8DYmYxBHBvcwMxBHZ0aWQDQjM2MDRfMQRzZWMDcGI2cw--?p=turn+a+wood+toothpick+holder&fr2=piv-web&fr=yfp-t#action=view&id=1&vid=3f2fc905f8e56de451ea0ab42d01849e)

[https://video.search.yahoo.com/search/video:\\_ylt=AwrBT8fp8b5Yc4UAiaVXNyoA;\\_ylu=X3oDMTE00T11ODc3BGNvbG8DYmYxBHBvcwMxBHZ0aWQDQjM2MDRfMQRzZWMDcGI2cw--?p=turn+a+wood+toothpick+holder&fr2=piv-web&fr=yfp-t#action=view&id=2&vid=bf33cd408072cd5b1b57844dcd27c5f0](https://video.search.yahoo.com/search/video:_ylt=AwrBT8fp8b5Yc4UAiaVXNyoA;_ylu=X3oDMTE00T11ODc3BGNvbG8DYmYxBHBvcwMxBHZ0aWQDQjM2MDRfMQRzZWMDcGI2cw--?p=turn+a+wood+toothpick+holder&fr2=piv-web&fr=yfp-t#action=view&id=2&vid=bf33cd408072cd5b1b57844dcd27c5f0)

You may copy either of the above links and paste it in your browser to view the video. You could also do a search of turning a wood tooth pick holder— there are a lot of them available. One of these videos may spark a new idea for you or help inspire you to turn a unique tooth pick holder for next month's challenge.

***Welcome New Member — Ken Bagdon (& son Koen)***

## Sign in for Challenge/Instant Gallery

In order to be credited with a Club Challenge you need to sign-in and it really helps if you do the same with anything you bring for the Show, Tell and Learn/Instant Gallery. It gets a little confusing and difficult to keep every thing credited to the right person, when taking pictures before the club meetings start, so your help by signing-in your contributions really helps—Thanks a million!

# Club Challenge for February



(left)

Art Parry

(Right)

Charles  
Jennings

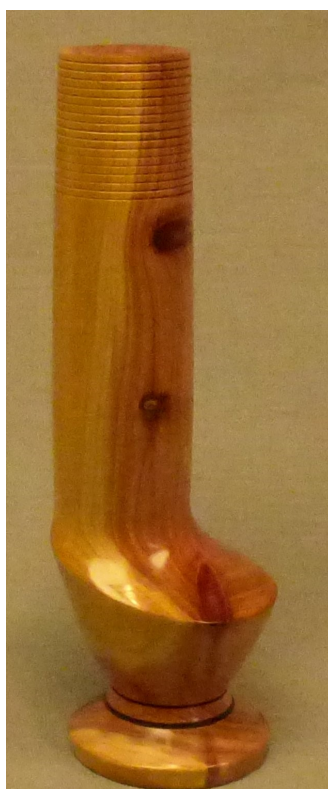
(Below L to R)

Doug Spohn

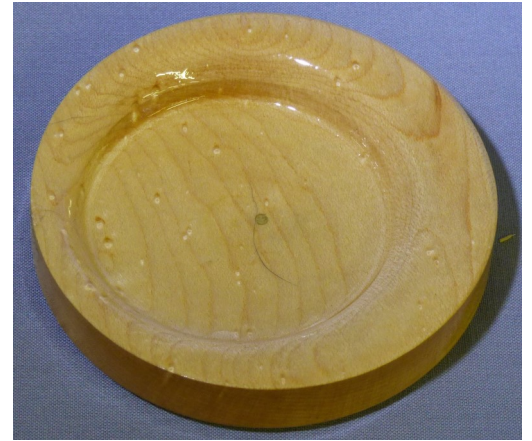
Les Isbell

John Dekle

Jeff Wheeler



# Challenge, Show, Tell & Learn



Tony & Barbara Suarez ↑ ↓  
← Ed Langham

Bev deYampert ↑  
↓ Koen Bagdon ↓



Tony & Barbara Suarez ↑  
← Jeff Wheeler ↓



# Show, Tell & Learn - Instant Gallery



4 above

Charles Jennings  
below Doug Spohn





# Show, Tell & Learn - Instant Gallery



Top 3  
Designed  
and turned  
by  
Charles  
Helton



Bottom 3  
Designed  
and turned

By

Les Isbell

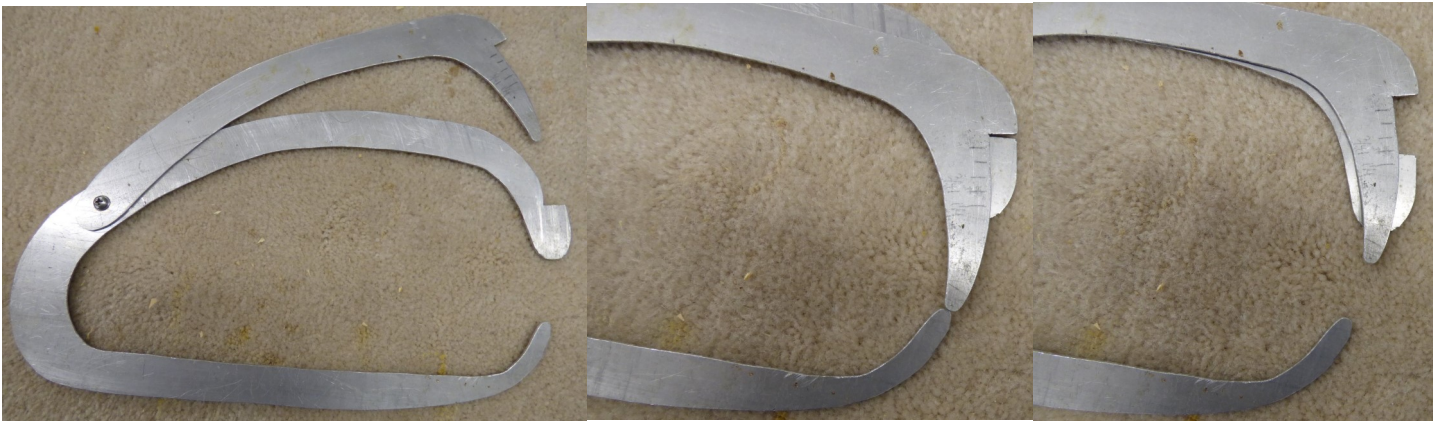


# Show, Tell & Learn - Instant Gallery



Designed and created by John Dekle

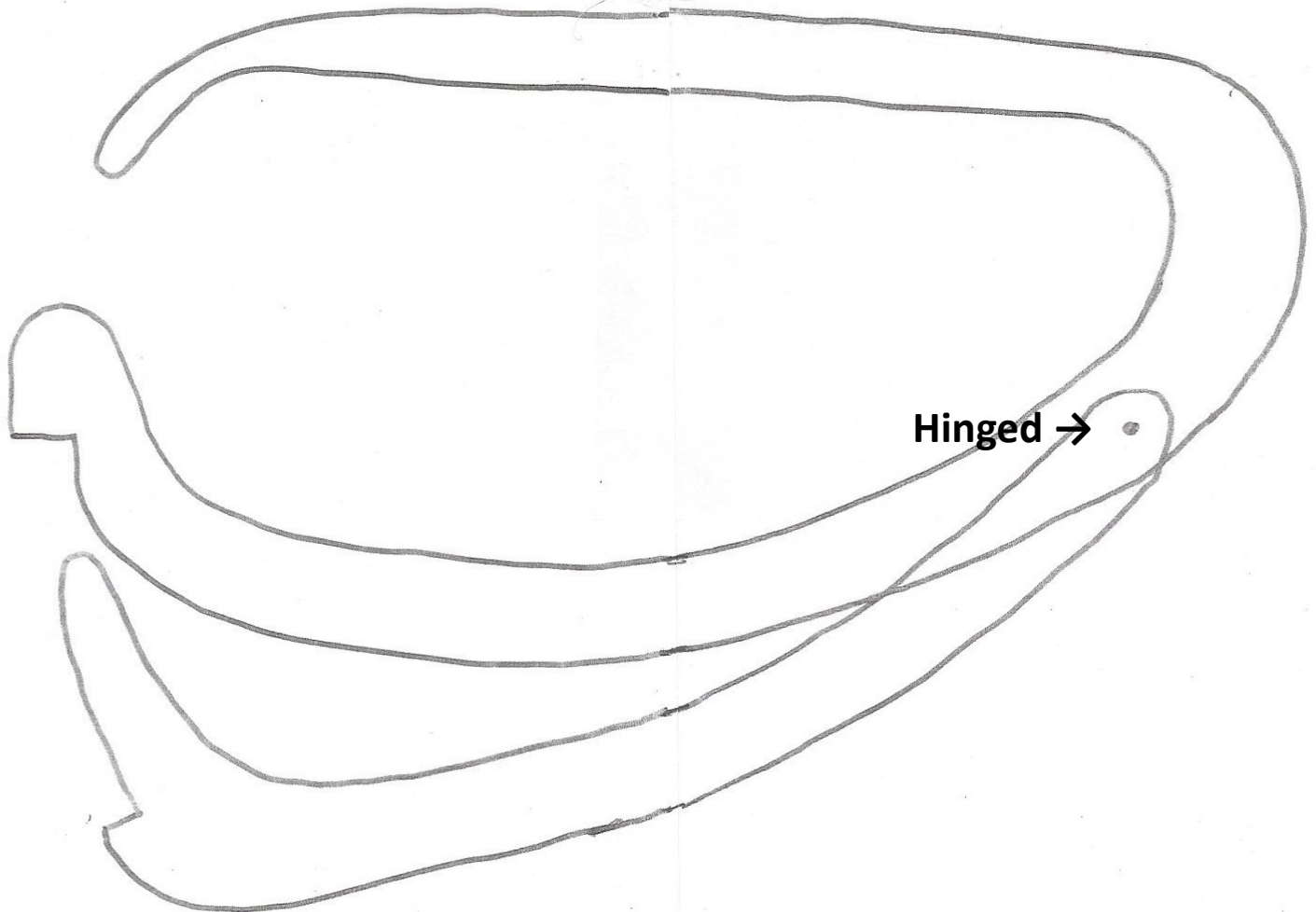
Below pictures of the calipers Charles Jennings showed in the demonstration. The pattern is on page 11



## Caliper Pattern

At the Feb. TSW meeting Charles Jennings showed a set of home made calipers and several people wanted the pattern so here it is. It was reduced 50% to fit in the newsletter. Enlarge it so the main body measures 7.5" x 14" .

Calipers were made from a metal street sign.



John Dekle will place an order for CA glue from Starbond following the March 18 meeting. If you want to take advantage of the club discount take inventory of your glue and fill out the order form. If you want more information regarding any particular item you can get information from the Starbond Web site at:

[www.starbond.com](http://www.starbond.com) If you click on the "Products" tab it will provide information regarding each glue and what it is designed to be used for. 16 oz bottles come with 2oz bottles, caps and extension tips. The FAQ tab also provides good info regarding CA glue. The goal is to receive the glue and have it ready to distribute at the April TSW meeting. John will provide you with a bill once the glue arrives. See page 12 for order form.

## CA Glue Order Form

Name \_\_\_\_\_ Total est. cost \_\_\_\_\_  
 (Payment due when the glue is delivered  
 Hopefully at the April meeting) Email/Phone \_\_\_\_\_

15% discount for AAW club with \$150 orders - Postage will be prorated and added to each bill

<b>Standard CA Glue</b>			
type	2oz - \$6	16oz - \$32	
Very Thin EM-02			
Medium Thin EM-40			
Medium EM-150			
Medium Thick EM-600			
Thick EM-2000			
<b>Flexible Clear CA</b>			
Glues listed below	2oz - \$11	16oz - \$62	
Thin KEG-50			
Medium Thick KEG-500			
<b>Rubber Toughened Black CA</b>			
Flexible Black Thin KBL-50			
Black Medium KE-150			
Flexible Black Medium Thick KBL500			
<b>Colored &amp; Other CA</b>			
Flexible Brown Thin BR-50			
Brown Medium BR-150			
White Medium Thick DW-500			
Odorless Thin N/O-05			
<b>Other Items</b>			
Accelerator 10oz Aerosol - \$13			
Accelerator Pump sprayer 8oz - \$8			
Accelerator Pump sprayer 16 oz refill \$13			

## Debark SAFELY with a Hand Adze

by Bob Heltman

Once upon a time, about 20 plus years ago, I had a forge and became quite interested in blacksmithing. Pounding on red hot steel, especially on a hot day, gives one a deeper appreciation for what our forefathers did in developing our country! At around the same time, I was beginning in woodturning, and forged a number of gouges and scrapers. Two related tools I developed were to aid in larger scale wood carving; these were hand adzes. As it turned out, I became more interested in woodturning, and the adze pictured in Figure 1 was ideal for removing bark from the center of half-logs prior to pinning a log in place between Steb center in headstock and the tailstock.

There were, and are, two approaches to mounting a half log. One is to trust in the firmness of the bark, which often leads to the log coming loose. After a few such accidents, particularly if damage to toes occurs, the second way is to use a hand axe and remove bark in the center of the log. The problem here is that the downward swing can come close to your thumb as your hand steadies the log!



When using the hand adze, one is facing the full bark side of the half-log. If necessary, the other hand can steady the log and tends to naturally hold the log at its upper left, out of harm's way. A few carving strokes with the adze gets one down to the wood itself which is a safer grabbing point for the tailstock's center. Figure 2 shows my two adzes.

**Figure 1. Hand adze that the author made for stripping bark from a piece to be turned.**



**Figure 2. This photo shows the author's two adzes.**



**Figure 3. This photo shows the heads of the two adzes of Figure 2.**

I tend to use the longer end of the adze's blade on the left. The "funny stuff" on the handles is a gripping material that forms to hand-fit by using a hot air gun. (Sorry, source was lost years ago.) Handles were carved on a shaving horse, with the steel heads held in place using epoxy and a carriage bolt, on the left one, and a wedge and epoxy on the right one. Figure 3 shows the heads. I tape-wrapped the one handle near the head to cushion against striking wood when sculpting.

In 22 years of use, these tools have stood up perfectly well. While these heads were forged, you can make a very functional adze head with most any piece of flat steel that is about 1/4" thick by 1 1/2" wide, and 4 to 5 inches long. Just drill a good-sized hole in the center and sharpened the edges "lopsided" with the cutting edge at bottom. See Figure 4 to get the idea.



**Figure 4. Side view of the head on one of the adzes.**

The angle of attack at the cutting edge can be adjusted by grinding, to where the adze functions comfortably within your normal chopping stroke.

Another point concerns the handle. Naturally, a woodturner will be tempted to turn the handle. HOWEVER, it is important that the adze NOT twist when striking wood! This is more likely to happen when your arm is tired, like when you have bucked some logs, split them, and are in a hurry to mount a half-log for green bowl turning. Twisting can result in dangerous glancing blows which may not be appreciated by near body parts! SO, turn the handle off center so it is oblong. Wrapping it with tape that provides extra friction between hand and handle is also a good idea. Ash or hickory are ideal woods.

An adze may not normally be considered a woodturning tool, but if one fells one's own trees, bucks the logs, paints the ends to ward off checking, and splits the logs lengthwise for bowl blanks, THEN the hand adze becomes as, or more important than, a chain saw.

By the way, sometimes a log will have some loose bark that can fly off dangerously. The hand adze is a fast and ideal way to remove some or all the bark. Since dust, sand, and grit get trapped in rough bark, and will erode the edges of your gouges more quickly, removing all bark first is often a good idea.

Besides, guys never have all the tools they need. Make yourself a hand adze. You will be glad you did.

This information is provided by  
*More Woodturning Magazine.*

Please visit their web site:

[www.morewoodturningmagazine.com](http://www.morewoodturningmagazine.com)