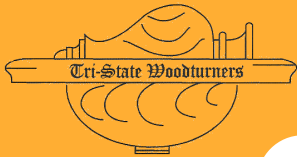


**TRI-STATE
WOODTURNERS**



Meeting Location:
8361A Dayton Pike
Soddy Daisy TN
(Horsin' Around fac.)

IN THIS ISSUE

May demo	1
April demo	2
President's Corner Officers & Sponsors Help Available	3
Treasurer & Web AAW Symposium	4
2019 Club Challenges	
Apr Challenge Pics	5
Apr Donations Pics	6
Apr Show & Tell Pics	6
Project—Door Stop	9

Cuts and Scrapes

WWW.TRISTATEWOODTURNERS.COM

MAY 2019 NEWSLETTER

Drue Hogland



Tri-State Woodturners an
official chapter of AAW

May Demonstrator

Drue Hogland was born and raised in Albuquerque, New Mexico, where the trees were few and far between. After a military tour of duty in Korea, Drue got into the heavy equipment business, with Caterpillar Dealerships. That took him from New Mexico to Texas and then to Knoxville. Drue retired from Stowers Machinery in 2008. He spent 42 years with three Dealerships, in three states, managing parts operations.

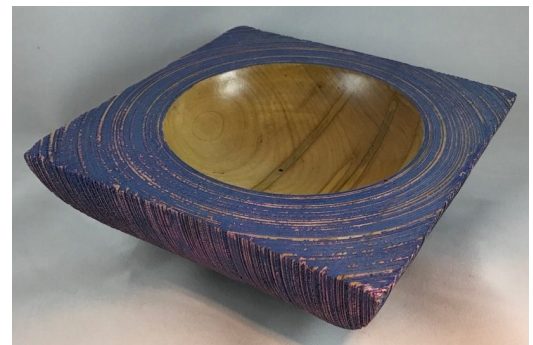
After piddling around in some flat work building book cases and such he took his first bowl turning class. It was love at first turn and never looked back. After twenty-some years he is still addicted to making shavings.

Drue has studied wood turning with some of the masters like David Ellsworth and many more. He has studied at John C Campbell and Arrowmont. Drue has demonstrated all over East Tennessee. He is the lathe in-



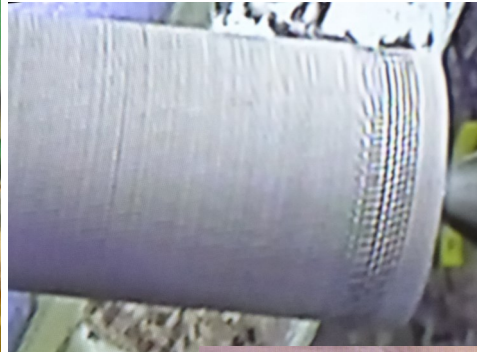
structor at WoodCraft in Knoxville. Drue has taught classes at Arrowmont.

Drue is a X-member of the Carolina Mountain Woodturners, a current member of the Cumberland Woodturners, and a lifetime member of the Smoky Mountain Woodturners. Drue has been a member of AAW for over 20 years.



April Meeting

John Jordan the demonstrator in April showed many slides of his work and talked about sources for inspiration and design. He demonstrated some technique for applying texture with a brass wire brush and various tools. Some of his embellishments were carved and textured which he also showed.





President's Corner

Wow! What a great 'Sawdust Session' we had yesterday. Doug Spohn led us through the making of Christmas ornaments and I for one learned some good techniques for turning an ornament. A special thanks to Doug for taking the time to prepare and guide us through the session as well as providing us with the necessary blanks. As you are aware, we will be selling Christmas ornaments this fall to support the Chattanooga Food Bank and now have a good start on our inventory for that project coming out of yesterday's session.

I encourage all of you to support this project by turning your own ornaments. It's not too early to start and I challenge each of you to turn at least one ornament this year. Don't forget the other service projects as well. Please continue to support the beads of courage program and the pens for troops project.

Keep wearing those face shields!

TSW CLUB OFFICERS

Jim Dvorak President(423)
883-2212 dvorak6258@epbfi.com

Josh Bowman Vice President
(423) 280-0954 jsbowman@bellsouth.net

Charles Jennings Treasurer
(423)902-1482 cwjwoodturner@epbfi.com

John Dekle Secretary/Newsltr Editor
423) 508-8051 Turning411@Yahoo.com

Doug Spohn Program Director
(423) 240-4386 djspohn@epbfi.com

Ed Lewis New Member Mentor
(423) 344-7295 EdLewis3267@gmail.com

The above officers are also official
Tri-state Woodturner Mentors



Ed Lewis has been turning for 43 years and has graciously offered to open his shop on Saturday mornings to help newbies. This is as good as it comes. Ed is not only skilled as a turner but an excellent teacher. Many TSW have gained valuable lessons from him over the years to where they are now very proficient. Call Ed at (423) 344-7295 or talk with him at the TSW meeting Sat. This is an official function of TSW.

NEW MEMBER MENTOR: Are you new to wood turning or at least have an interest in it? TSW club is providing opportunity for you to learn from an expert turner who has provided instruction and guidance to many in the club and others. Ed Lewis opens his workshop on Saturdays and would love to help you. Contact him at (423) 344-7295. There is no fee for this instruction from an excellent turner & teacher.

The following sponsors give generously to Tri-State Woodturners and we want to encourage members to support them generously



5824 Brainerd Rd., Chatt. TN 373411 + (423) 710-8001

CUTS AND SCRAPES



CRAFT SUPPLIES USA
THE WOODTURNERS CATALOG

www.woodturnerscatalog.com +(800)551-8876

Treasurer's Report



The Web

Starting Balance	4,669.94
Income:	393.06
Wood Raffle/Donation	273.06
Dues	120.00
Expenses:	300.00
Demonstrator	300.00
Ending Balance	4,763.00

Just for fun, and we need that occasionally, here is a web site for the BIG stuff. Most of us could not do this, maybe Ed on his Nichols lathe. Personally, I've never used lag bolts to secure a piece of wood on a face plate. It is a short 5 minute video and I think you will enjoy it: <https://www.youtube.com/watch?v=w8uknJY6IN4>

If you want a video for turning a door stop for next month's challenge try a google search and you will find plenty videos available.





There is a place for you in Raleigh, NC, July 11-14, 2019. Learn more.
<https://www.woodturner.org/general/custom.asp?page=2019RaleighMain>

2019 TSW Club Challenges

January Weed Pot—7 submitted	July Made 100% with a Skew
February Ring Box/Holder—9 submitted	August Threaded Item
March Segmented Pencil Cup—10 submitted (at least 24 pieces)	September Toy (not top)
April Desk Set— 6 submitted	October Mortar and Pestle
May Compote	November Triplet (3 identical items)
June Door Stop	December Silent Auction Item

Club Challenge for April - Desk Set



Charles Jennings ↑



Jerry Bowman ↑



↓ John Dekle ↑



Squarish
Plates
March
demo

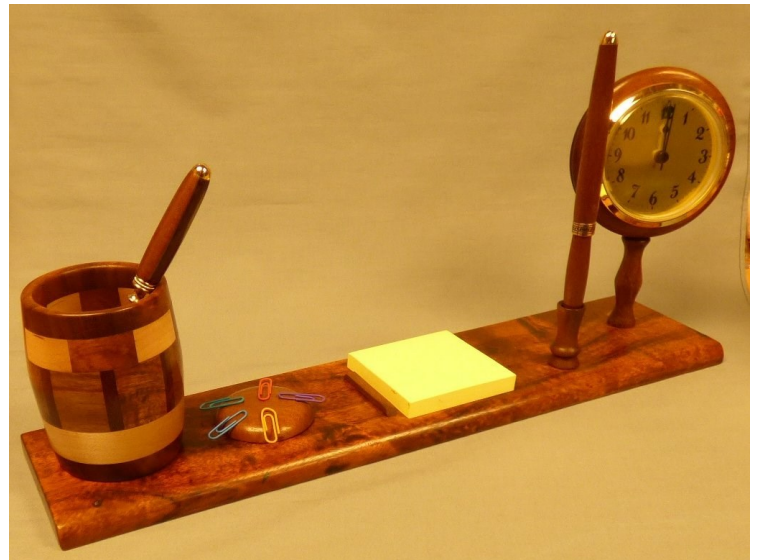
← Chad
Poole



← Les
Isbell



← Doug
Spohn
Jerry →
Schnelzer



Previous Month's demonstration by John K. Jordan was a Squarish Plate submitted in lieu of challenge



Donation Projects in April



Beads of Courage Box by John Dekle



Pens for the troops Top 10 by Les Isbel Bottom 2 Jerry Schnelzer

Show, Tell & Learn - Instant Gallery



These vessels were made by Ed Lewis Process in center

Show, Tell & Learn - Instant Gallery



↓ Art Parry ↑



Bev deYampert ↓ ↑ Art Parry



Doug
Spohn
← →



Show, Tell & Learn - Instant Gallery



Top four created by Charles Jennings

Chad Poole →



← John Dekle

Jerry Schnelzer ↓



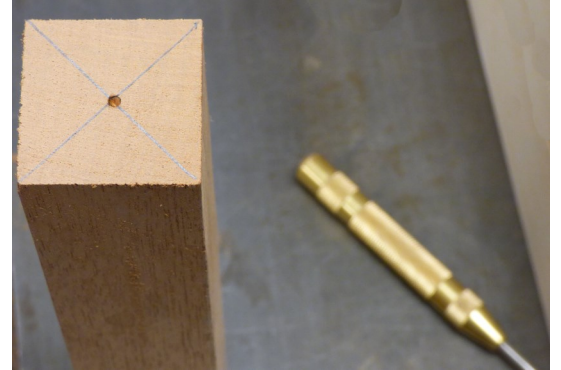
Creating a Door Stop by Dr. John Dekle

This is a great project for the summer when you may be busy doing other things as it takes very little time or skill. Two variations will be shown from which you may select one or create your own design. The first is a rather traditional door stop but I had someone comment to me they really liked it and would buy something like that, so I gave him one.



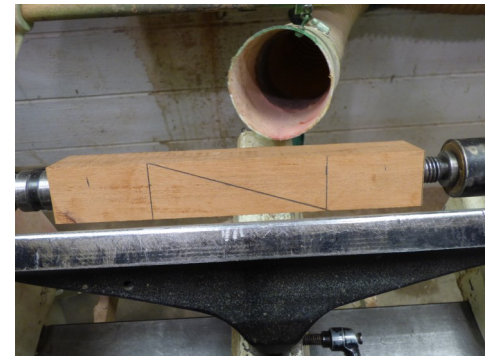
Step 1:

Select your piece of hardwood and square it up to about 1.5" and about 9.5" long. (If you are making a door stop for a door that has a larger than normal gap to the floor you may need to make it larger than 1.5".) Mark the center to turn between centers.



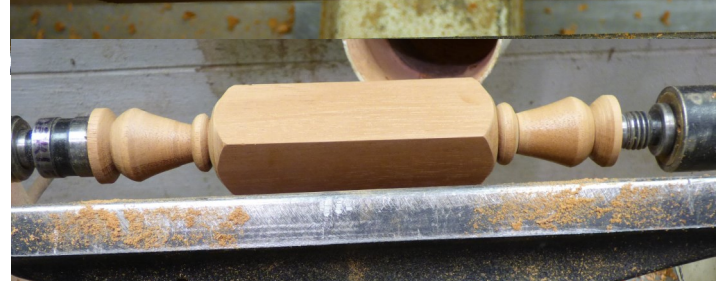
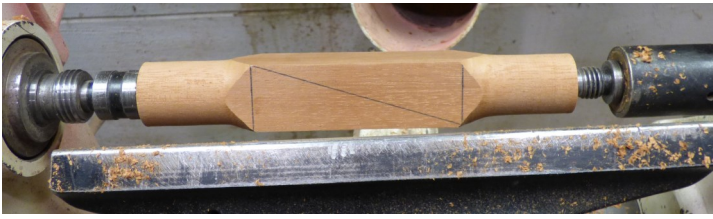
Step 2:

Mount between centers and sand, especially the center, to the final grit you wish to sand the edges of the project. You can measure out the project first (next step) if you wish but the lines will be sanded off. After sanding you will need to mark out the project on the wood. I left about 1/2" waste on each end. The handles are about 1 1/2" on each end.



Step 3:

DO NOT turn the entire piece round! You want to turn a pommel going from square to round. It is important to follow your marked out pattern. You may use a bowl gouge to start the transition and then refine it with a detail gouge or skew. Since you turn a handle on both ends leave sufficient mass to support the turning on the other end. Turn to the point where both ends may be cut off with a saw. Sand the handles before cutting and apply finish while it is still on the lathe. (Pictures on next page)



Step 4:

Cut the piece from the lathe to avoid tearing out the fibers on the end. Then finish the ends of the handles. A sanding pad on a drill press or lathe is helpful. Apply finish to the freshly sanded ends. My next step was to buff the project on a Beall System.



Step 5:

Take the project to the band saw to cut the two door stops apart. If you do not have a band saw use a hand saw.



Step 6:

If necessary sand the bottom which you just cut. If necessary knock off burrs with fine sand paper.



Project— Alternative Door Stop Challenge for June

Creating an Alternative Door Stop

by Dr. John Dekle

Step 1:

I used a piece of Brazilian Cherry 5½” x 5½” x 1½”. Drilled a Hole 2¼” deep enough for a spigot to chuck the piece on the lathe. With a Band Saw rough cut it into a 5½” circle or chuck it and turn it round.



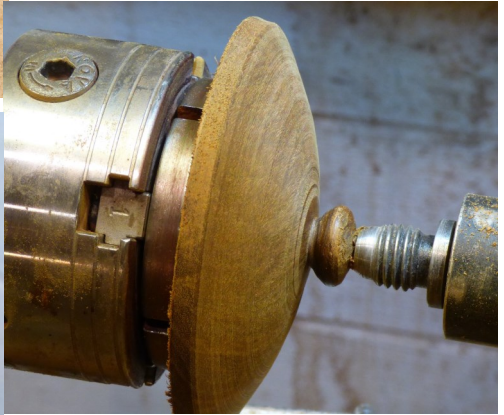
Step 2:

Between centers face off the bottom (where the hole is) so it will sit flat on the floor. Chuck the piece and turn the top in a dome shape. You can form a small handle on the top.



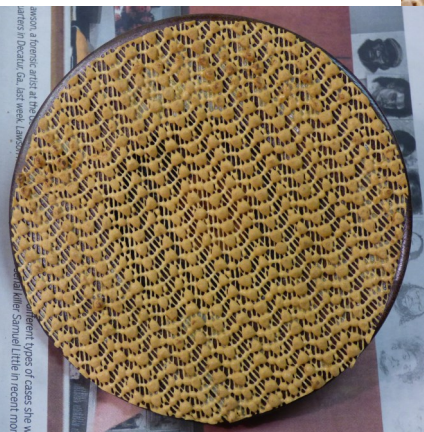
Step 3:

Sand and finish the top.



Step 4:

Remove and sand the base. Cut rubber shelf liner to fit the base and glue it in place. I used Weldwood Contact Cement.



The finish on this door stop is Walnut Oil and it is Beall buffed.

Inspiration for the door stops came from “Wood Turning 319” and Wood Turner.org