



Meeting Info:

Meeting location:
8361A Dayton Pike
Soddy Daisy, TN
(Horsin' Around)
At 6:30 p.m.

IN THIS ISSUE

May. Demonstrator	1
April meeting	2
President's Corner	3
Officers	
Sponsors	
Mentors	
Treasurer's report	4
The Web	
Club challenges 2022	
Safety Tips	5
Useful Ideas TTT	
AAW Symposium	6
Sawdust Sessions	7
TSW Membership	8
Show & Tell Pictures	9

May Demonstrator

John Dekle

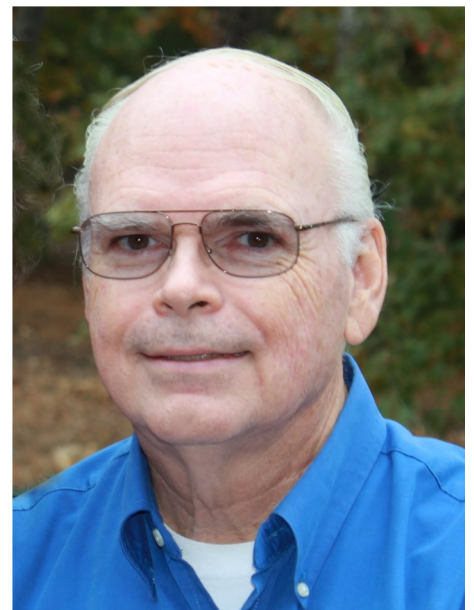
Dr. John Dekle bought his first lathe in 1996 while living in Hawaii. Shortly after that a friend visited and gave him a segmented pencil cup. He was happy to show him how to make segmented items and that started a passion for turning. After spending 35 years in Hawaii as the State Director for Child Evangelism Fellowship and teaching in a Seminary he retired to TN the end of 2011 when he immediately joined TSW.

The secretary for TSW was moving and John accepted the position. In recent years he has dabbled a little in casting and turning acrylics. Finally, the move was made to buy a pressure pot and work more with casting his own resin.

Due to the popularity of casting resin recently and turning it, we are going to have a discussion on this subject. If you are doing some casting you may be able to shed light on the subject for those not yet into this avenue of the craft. John will actually mix some resin and discuss the process. Then he will turn a piece and talk about that part of the process. Casting provides another avenue for creativity with the large spectrum of materials available, colors and possibilities.



Tri-State Woodturners
An official AAW chapter



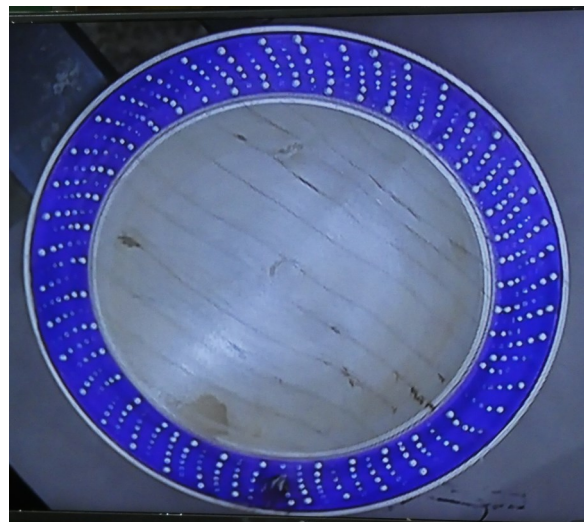
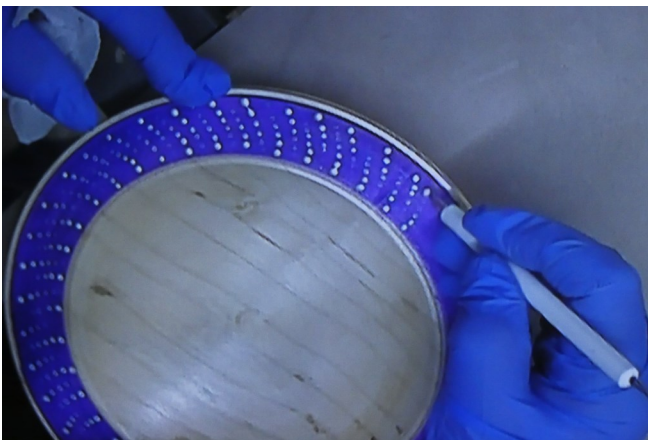
If you have some items you have cast or turned bring them along on Thursday night to show..



April Demonstration



Peggy Schmid mounted a roughed out timber on the lathe and turned a wide rim shallow platter. After clearly identifying the area to be embellished she painted the undercoat. Then with a special Mandela dotting tool applied dots around the rim



Completed Embellished Platter →



President's Corner

Have you signed up to volunteer at the AAW annual symposium this June? If not, I strongly urge you to do so. It is a great opportunity to help promote our craft as well as meet other wood turners from around the world. If you have questions about volunteering, please talk to me.

of woodturning. After the symposium, TSW will periodically meet with Signal Center clients to continue the instruction. If you are interested in supporting this program, please talk to me about it.

I encourage you to continue supporting our service projects, the pens for troops and Christmas ornaments for the food bank. Also, we have agreement with the Beads of Courage organization to take all boxes brought to the symposium with them for distribution across the country where needed. So let's turn out beads of courage boxes to bring to the symposium. Be safe and keep those lathes turning.

As mentioned last month, we will be partnering with the Signal Center to continue a wood turners mentoring program that will be initiated during the symposium. During the symposium, Andi Sullivan, who is visually impaired, will lead a couple of rotations instructing visually impaired clients from the Signal Center the basics

TSW CLUB OFFICERS

- | | |
|------------------------|--------------------------|
| Jim Dvorak | President |
| (423) 883-2212 | dvorak6258@epbfi.com |
| Josh Bowman | Vice President |
| (423) 280-0954 | jsbowman@bellsouth.net |
| John Fortmiller | Treasurer |
| (423)280-5904 | Leowen@Epbfi.com |
| John Dekle | Secretary/Newsltr Editor |
| (423) 508-8051 | Turning411@Yahoo.com |
| Doug Spohn | Program Director |
| (423) 240-4386 | djspohn@epbfi.com |

Most above officers are official
Tri-state Woodturner Mentors



TSW club meeting is
May 19 (6:30)
At Horsin'Around

NEW MEMBER MENTOR: Are you new to wood turning or at least have an interest in it? TSW provides an opportunity for you to learn from other turners who will be willing to give you personal instruction and guidance. There is no fee for this instruction for TSW members. Contact one of the listed officers who will guide you to select a helpful mentor for you.

The following sponsors give generously to Tri-State Woodturners and we want to encourage members to support them generously



5824 Brainerd Rd., Chatt. TN 373411 + (423) 710-8001

CUTS AND SCRAPES



CRAFT SUPPLIES USA
THE WOODTURNERS CATALOG

www.woodturnerscatalog.com +(800)551-8876

Treasurer's Report



The Web

Beginning Balance April		5,746.83
Income		145.00
Dues	40.00	
Raffle	105.00	
Expenses		300.00
Demonstrator	300.00	
Ending Balance April		5,591.83

Are you interested in resin casting? Fortunately for us today we have access to a lot of info on the internet. I suggest you just do a web search for resin casting. There are a couple sources I highly recommend in relation to turning and casting resin.

Alumilite provides good resources

Turners Warehouse with Chad Schimmels has a lot of videos and resources

Zac Higgins does a lot of creative things turning and casting acrylics at NVWoodwerks

2022 TSW Club Challenges

Turn the item the month before as a sample for new turners or turn the item for the month but the same item cannot be used twice or two months in a row. (Example in March turn a mallet for a sample of what a new turner could turn in April.) There is a wide spectrum available to be as simple or complex as you want and your skills allow. If you are a confident turner you can help new turners by submitting ideas for them to do the following month.

- Jan **Multi-media** (more than 1 material, i.e. species of wood, wood & acrylic or metal) (8)
- Feb **Garden** (useful item for gardening or for the garden) (7)
- Mar **Multi-finish** (more than 1 item, could be a combination of items) (6)
- Apr **Workshop** (something to be used in a workshop handle, jig, mallet, etc.) (4)
- May **Bowl** for symposium (donation for the Empty Bowl project)
- Jun **Kitchen** (things that could be useful in the kitchen, spurtle, spoon holder, handle, etc)
- July **Sports** (related to a sports team or to use in a sport)
- Aug **Home** (anything useful for a home, art, clock, lamp, door stop, stool, etc.)
- Sept **Jewelry** (necklace, ear ring set, ring, shawl pin, ring holder, etc)
- Oct **Ornament** (be creative try something unique)
- Nov **Personal** (gift for someone, something a person could use)
- Dec **Silent Auction** (to be donated for the Christmas dinner)



Safety Tips

Safety is YOUR Responsibility

Turners cannot expect someone else to protect them. We have to take the responsibility for our own safety. Tool manufactures often provide safety features on their tools but if we ignore them we endanger ourselves. AAW and TSW are constantly putting out safety tips to encourage us to be safe when turning. Danger is not always immediate. Accidents often do happen in a split second but there are dangers like breathing harmful dust that can occur after years of abuse. Let's pay attention to safety tips and enjoy this wonderful hobby of turning for years to come.

Useful Ideas, Tips, Tools & Techniques

How is your workspace laid out? What do you use the most when turning? Those things should be close at hand to maximize your turning time. If you have to journey across the shop to access your sharpening system, you may spend less time sharpening or more time because of the distance to access the grinder or what you use to sharpen your tools. Is there a way to rearrange your work space so the sharpening system is close to the lathe? Are the accessories needed to sharpen tool close at hand to the sharpening station? Things like a magic marker, if used to mark a bevel to be sure the grinder is set up correctly could be permanently stored in a drawer or attached to the sharpening station. What about those gauges to set the correct angles, are they available at this station? I use a Tilt Box (digital angle guage) to set the angle on my Oneway Wolverine flat platform which is stored in a drawer under the grinder. In that drawer are other diamond hones and sharpening tools. Tools and sandpaper are regularly used as well and they will be addressed in a future issue of Cuts and Scrapes.



This drawer under the grinder contains needed accessories for sharpening tools



AAW Symposium

How can you help?

Thank you for your generous support to loan tools and supplies for the symposium at the last TSW meeting. This is a big help. If you forgot what you offered or need info on when or how to get things to Alan please contact him at the meeting Thur or contact him at [423-400-3499](tel:423-400-3499) or alanvandegriff@hotmail.com

While the AAW Symposium is a great opportunity for us and the city of Chattanooga, it also will require a lot of volunteers both from our club and others, even non-turners. In order to volunteer, people need to go to <https://www.woodturner.org/Woodturner/2022Chattanooga/2022-AAW-Symposium---Chattanooga--Tennessee.aspx?d12524dfc095=8#d12524dfc095> then click on the "sign up!" box.

Mark your calendar now Reserve these dates

June 23-26, 2022

June 2022						
S	M	T	W	T	F	S
			1	2	3	4
5	6	7	8	9	10	11
12	13	14	15	16	17	18
19	20	21	22	23	24	25
26	27	28	29	30		

Empty Bowls

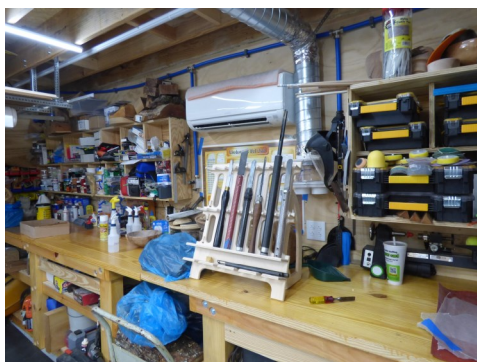
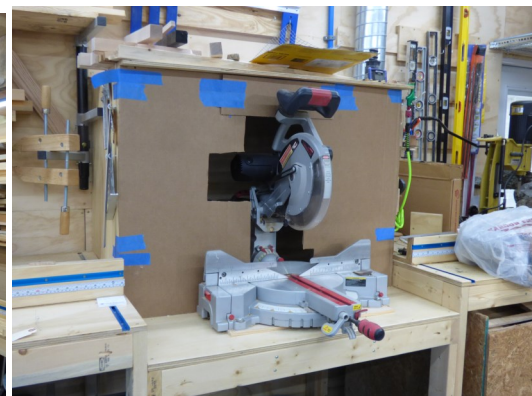
Turners attending the AAW Symposium from around the world will donate bowls which are sold during the Symposium for \$25. The proceeds from this sale go to a local charity. It has been decided the Friends of Special Children in Chattanooga will be the recipient of this project. TSW members are encouraged to donate bowls for this project which is the challenge for this month.



Sawdust Session



Thanks Alan for the tour of your new work shop and to see how you have it laid out. It was very interesting and a great time to spend with other TSW members.



Next Sawdust Session May 21

John Dekle will host the Sawdust Session in his workshop Sat. May 21. If you would like to make a Celtic Knot bring a square piece of wood at least 4" long. This could be for a pen blank, handle, honey dipper etc. We will talk about how to make them and make some. Of course if you have other projects to discuss they will be welcome.

DIRECTIONS: From Hwy 153 drive north on Hwy 58 about 10 miles. After Hunter Rd you go over water both sides of the road. The next left goes to Harrison Bay State Park, go past that to the next left. Turn left on Ramsey Rd and go 1 mile. Turn right into River Cove subdivision and immediately turn right onto Cedar Cove Ln (short cul-de-sac). 4th house on the right. Plenty of parking down the driveway. 6310 Cedar Cove Ln, Harrison, TN (423) 364-1268. If you need a map check out the Feb. TSW newsletter on-line.

Would you be willing to host a Sawdust Session?

Sessions are usually the Sat. following the TSW meeting from 10-Noon

You don't have to plan anything special although you are welcome to do so. It's a time for club members to meet and talk, ask questions and see where and how others turn.

Talk with John Dekle if interested in hosting one

Tristate Woodturners Membership

Membership dues according to our Constitution are set at \$40 per year. What does that money go for and what are the benefits of being a member of Tristate Woodturners?

The dues collected are the major source of income for the club. The December silent auction, monthly wood raffle, and donations make up the rest of the income for the club. These funds pay for insurance, demonstrators, rent for storage of equipment and place for our meetings. In addition, tools, equipment used by the club (cameras, tripods, lathe, tools etc.), web site, internet access and other miscellaneous expenses are met. The generosity of members continues to make it possible for the club to exist and provide the following benefits to the club members and the community benefits from the contribution of members via service projects and the availability of this resource.

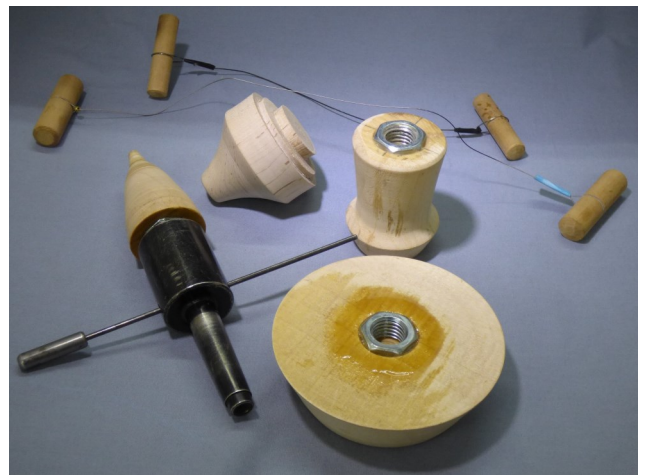
Benefits to members of TSW include:

- Monthly demonstrations by excellent instructors
- Comradery with other wood turners
- Inspiration from other turners
- Opportunity to participate in Saw Dust Sessions or host one
- Education from demonstrations and interaction with other turners
- Participation via Show and Tell - share insights with others and learn from their experiences
- Positive and helpful critique toward improving ones skills
- Opportunity to receive Gift Certificates in monthly drawings
- Discounts from Vendors (example Klingspor)
- Access to demo videos (coming for members only)
- Access to member mailing list on the web
- Availability to personal mentors
- Potential of serving as a mentor or demonstrator
- Receive emails for wood alerts, special events and sales opportunities
- Regular reminders of safety issues and concerns
- Opportunity to be involved in TSW leadership
- Access to the TSW library of magazines, books and DVDs/videos
- Insurance protection when demonstrating

Coming Soon:

We are in the process of developing a system whereby the Demonstrations can be recorded and made available for a period of time following each meeting on the web-site. This will be a valuable resource to be able to go back and view a demonstration to pick up helps share or a process that you may not fully remember. If you are unable to attend a meeting you will be able to access it via the internet. If you are interested in helping with this project please talk with Jim Dvorak. These recorded sessions will only be available to current TSW members.

Show and Tell



The items on this page were all made by Charles Jennings



Cuts and Scrapes

Show and Tell



This page was created by Jared Bruckner



Show and Tell



Three plates made by Dieter Kuberg



Bowl and mallets made by Jerry Schnelzer

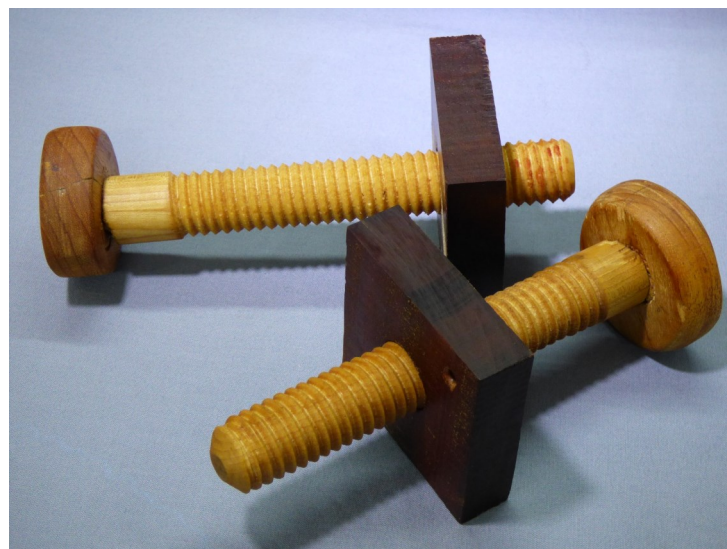
Show and Tell

Top 3 items made by John Dekle



← Mallet made by
Johnny Renfro

Segmented bowl made by
Jerry Reed ↓



Wooden bolts & nuts created by
Jeff Wheeler

