

TRI-STATE  
WOODTURNERS



**PRESIDENT:**  
**Josh Bowman**  
(423) 280-0954  
jsbowman@bellsouth.net

**VP:**  
**Doug Spohn**  
(423) 240-4386  
djspohn@epbf.com

**SECRETARY:**  
**John Dekle**  
(423) 508-8051  
Turning411@Yahoo.com

**TREASURER:**  
**Barbara Suarez**  
(423) 855-4149  
drag0n0wl1955@gmail.com

**Meeting Location:**  
8361A Dayton Pike  
Soddy Daisy TN

**IN THIS ISSUE**

Nov. demo	1
Oct. meeting	2
Instant Gallery	
President's Corner	3
Treasurer & Web	
Pens for Troops	4
Christmas dinner	5
Club Challenge	6
Show & Tell Pics	7
AAW Project	11

# Cuts and Scrapes

WWW.TRISTATEWOODTURNERS.COM

NOVEMBER 2017 NEWSLETTER

## Keith Rueckert

### Nov. Demonstrator

R. Keith Rueckert was born in the dairy county of Clear Lake, WI. He later settled in Michigan. While visiting a friend in Atlanta, GA in 1964, the contract in weather extremes persuaded him to relocate and make it his home. He met his wife there, marrying her in 1969.

Both his father and step-father had been building contractors. Thus it was natural that he would migrate into that field as a builder of single family homes.

During his years in Atlanta, Keith developed an appreciation for the works of Ed and Philip Moulthrop-well-known father and son woodturners from the Atlanta area. His admiration of the beauty of the wood in the bowls they created grew into a desire to, one day, try his hand at woodturning.

Keith retired to Gilmer County in the North Carolina Mountains in 1998. With time on his hands and a need to 'supervise' something or someone, his wife gently reminded him that it was time to pursue that wish. After taking a one-day lesson from a fellow turner, purchasing a lathe and a few tools, he was on his way to a very satisfying hobby.

Keith's long experience working with wood in his business gave him a deep appreciation for the various grains, textures and colors. Most all of his creations come from trees on his own acreage that have died or been felled by nature's will. Other wood is obtained from friends in the tree removal business who watch for trees that have distinctive color and or grain with unusual knots or burls. Fungus growth-known as spalting- will cause unique flaws, cracks or patterns in the wood as will the insects that commonly inhabit the trees. What may appear to be a rotting log to one is a challenge and inspiration to the turner. The defects of nature give him an opportunity to make each vessel truly one of a kind.

When Keith is asked to duplicate a certain piece, he responds: 'No two pieces of wood are alike. Each one offers to me its unique character which I attempt to define through form and expression. While some ventures wind up as fuel for the fireplace, I find deep satisfaction in the process. The end result



Tri-State Woodturners an  
official chapter of AAW



may differ from what I envisioned at the beginning.'

Keith Rueckert has served as the president of the Apple Ridge Woodturners for many years and is still active in that club.

This Saturday Keith will be demonstrating how to make Bottle Stoppers, Candle stick holders, Napkin holders and possibly other small items. While you may have made some of these items in the past there is almost always extra little tips shared by demonstrators that we can find helpful in making us better turners.

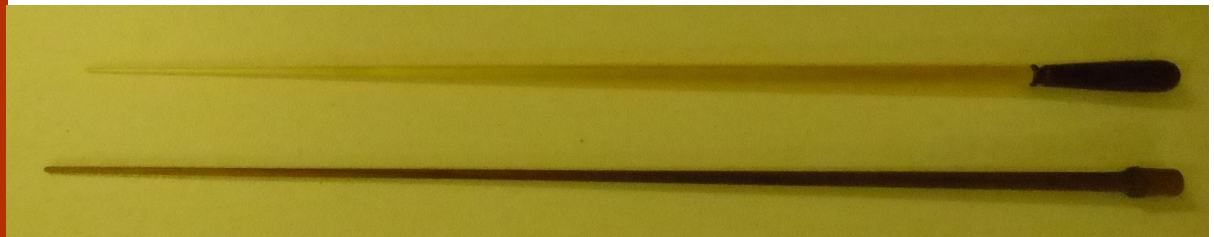
# October Meeting with John K. Jordan



John demonstrated a simple way to turn a beads of courage bowl in sections so there is not as much deep hollowing to do. This was a very practical demonstration as we want to make an effort this coming year to produce a number of these projects to help children going through traumatic experiences in the coming year. The second portion of the demonstration John showed how to make long thin spindles which can be used for pointers, conductor's baton, Harry Potter type wand, riding crop, etc.



Wands John made previously and the one he made for the demonstration



Instant Gallery

The monthly Club Challenge offers opportunity to learn by doing things that may be new or a challenge. The Instant Gallery or Show, Tell and Learn is an opportunity to encourage others by showing what you have made. Your creations may give others ideas, even if they don't make exactly what you made.

# Treasurer's Report



# The Web

Starting Balance		4,084.19
Income:		131.00
Wood Raffle	65.00	
Snack collection	16.00	
Dues	50.00	
Expenses:		185.00
Demonstrator	100.00	
Uhaul—fair	85.00	
Ending Balance		4,030.19

Here is AAW's new Total Experience video tip, "**Sharpening and Using the Microbevel**," featuring Jimmy Clewes. This video begins with some good info regarding AAW and benefits it offers members. Here is the link: <http://www.woodturner.org/default.asp?page=TEVideoMicroBevelCle>

If you are not an AAW member you can get a **FREE** 60-day AAW Guest membership so you can access a complete issue of Woodturning FUNDamentals, November issue. The issue will include an assortment of projects, techniques, tips, and a video to help build essential woodturning skills. Features include "Turn a Side-Hollowed Christmas Ornament," by John Lucas, and "Put a Proper Lid on It," by Walt Wager. <https://aaw.site-ym.com/default.asp?page=JoinAAW>



## President's Corner

Remember the November meetings presidents' challenge is a Christmas Ornament. And the more you participate the more likely you'll win a special prize at the end of the year.

Speaking of Christmas Ornaments, our yearly Christmas banquet will be again this year at **Privateer Yacht Club, 4713 Privateer Rd, Hixson, TN 37343 on December 9 at 6 pm.** The meats are taken care of, but be

thinking of vegetables, tea (sweet and unsweet), coffee, water, deserts and breads to bring. We'll have a signup sheet at this coming meeting.

At the Christmas party we'll have the silent auction. **We ask you to bring anything you're willing to donate for the auction. We rely on the annual silent auction to keep our yearly dues down and support the great demo's that Doug brings in.** Simple or complicated all will be accepted. Tools, turnings, crafts of all kinds. I hope all of you will have fun with the bidding as I do. Along with the Christmas party, we also start our new year for dues.

John Dekle sent me some great news. Our club came in 1<sup>st</sup> place in this area for the Pens for Troops sponsored by Woodcraft. At the December Christmas Party the folks that helped toward that effort will be included in a special drawing for Woodcraft \$25 gift certificates.

And lastly a word on safety. It's now getting cold outside and many of us have shops that are not normally heated, so use portable heaters. There are 2 issues with this, allowing the heaters to come in contact with wood chips can start a fire. Also open flame type heaters, such as kerosene can cause carbon monoxide in an enclosed area.

# Next TSW Meeting Sat. Nov. 18, 2017



# Pens for Troops



It has been an interesting and rewarding project this year to focus on making pens for our troops. This is a fabulous way for us to express our appreciation to them for their sacrifice on our behalf. If you served in the military you know how special it is to hear someone express appreciation for your service. 20 turners from TSW got involved making pens this year. We completed **560** pens that will be donated to service members by Woodcraft.

Every pen made is greatly appreciated. A special thanks is extended to the following who made 40 or more pens: Bill Moore, Richard Nobel, Charles Jennings, Les Isbell, Jim Dvorak and John Dekle.



In 2018 we want to focus on making Beads of Courage boxes but Woodcraft will still provide pen kits if you want to make pens for the troops in 2018. Please let John Dekle know if you are interested.



**Welcome  
Donald T. Nelson  
As a new member to  
Tristate Woodturners**



It is really terrific to have a Woodcraft store here locally where we get great support for our craft of woodturning. The store has been super supportive of TSW and we encourage you to shop there, attend a free demo or take one of the many classes they offer. They have a wide selection of tools for all kinds of woodworking. The staff are very helpful if you need advise on projects or selection of tools, wood, finishes, etc. Let's support them and keep them here in our community. Thank you Wayne and staff at Woodcraft—we appreciate you!

Next TSW meeting  
Nov. 18, 2017—1:00  
Horsin' Around  
8361A Dayton Blvd.  
Soddy Daisy, TN







# Christmas Dinner

**Saturday—December 9, 2017 at 6:00 p.m.**

**Privateer Yacht Club**

4713 Privateer Rd. Hixson, TN

Pot luck dinner (club provides the meat)

Bring your spouse & food you signed up for (otherwise bring a salad, veggie or desert)

Bring something for the Silent Auction and be ready to purchase items.

It will be an evening filled with good food, enjoyable company and lots of fun.

## Silent Auction

Now would be a good time to start thinking, if you haven't already, about what you could donate to the Silent Auction. You may have something you made, (can be turned or something totally different), a tool, some wood a turner could use or a jig you find helpful and made to share with someone else. Maybe a spouse or friend made something that could be donated. How about a gift card to Walmart, Food City or Woodcraft? This is for a good cause—proceeds go to Tristate Woodturners Club and help to keep the membership dues to a minimum. Be sure to bring cash, check or a credit card so you can purchase items. It's always a lot of fun to out bid someone else for some neat item.

# Club Challenge for October A Hat



← Bev deYampert ↑ Don Moore

← John Dekle ↓ Les Isbell



Mini hats made by Charles Jennings



# Show, Tell & Learn - Instant Gallery



Items on this page were all created by Charles Jennings



# Show, Tell & Learn - Instant Gallery



↖ Bev deYampert      ↑ Bob Hale

↙ Don Moore      ↓ Jerry Bowman



Les Isbell →





# Show, Tell & Learn - Instant Gallery



Desk sets, Pendant and Weed Pot  
made by John Dekle



Pens for the Troops and  
Tri-cornered bowls made by

Jim Dvorak





# Show, Tell & Learn - Instant Gallery



↖ Sphere & Bowl ↑ by Doug Spohn

← Bowl by Ed Langham

Ornaments by Jake Neidling ↓



↑ Richard Nobel ↑





# BOX LID ALIGNMENT PIN

Alan Falk

Like making lidded boxes from a single piece of wood with interesting grain or figure. Making the lid and box from the same piece of wood allows for the grain to flow continuously from box to lid, but it bothers me when the lid is rotated and the grain becomes misaligned. One simple, unobtrusive way to keep the lid aligned properly is to install a very small alignment pin where the lid meets the box. The pin is glued into a hole in either the lid or the box, depending on your lid design. When the lid is rotated, it “clicks” into place in exactly the right position.

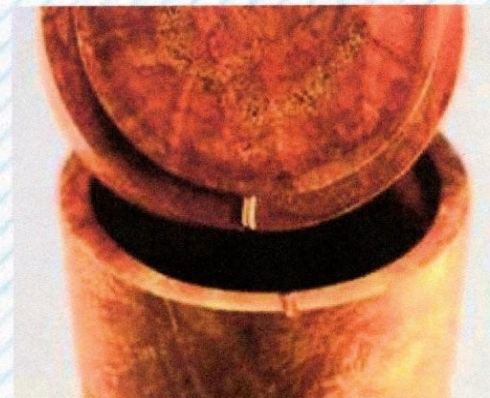
The idea is to align the grain as you like, drill a hole centered on the joint line between the lid and base, and glue in a pin. A short length of 14/2-gauge copper wire (Photo 1), stripped of its sheathing, works well for the pin, though you could use skewer sticks or another type of thin cylindrical material. My copper wire measured about .080" on the digital calipers, so I drilled a  $\frac{3}{32}$ " (2.4mm) hole to accept it. You'll have to size your hole according to the pin material you choose.

## Drill pinhole

After you've turned your box, firmly tape the lid to the base with the grain aligned to your satisfaction. The tape keeps the grain in proper alignment



An unobtrusive pin affixed at the box/lid juncture registers the lid at the correct grain orientation.



and holds the lid tight against the box. The hole should be drilled straight into the box, not at an angle, so I use a V-block type jig to hold the box securely in place on the drill press table (Photo 2).

Align your drill bit exactly where the lid and box meet (Photo 3), so half the hole will be in the lid and half will be in the top edge of the box. Drill to a depth appropriate for your box lid design; my lid design allows me to drill

about  $\frac{3}{4}$ " (19mm) deep.

## Affix the pin

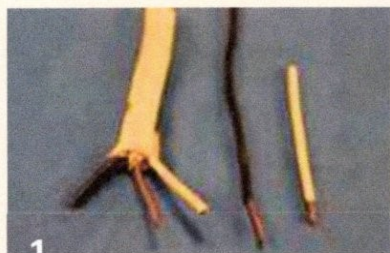
Cut a piece of stripped wire about 1" (25mm) long. Smooth one end with abrasives to remove any sharp corners. Separate the lid from the box. Apply a bit of epoxy or cyanoacrylate (CA) glue to the

hole in the lid (or box, depending on your design) and push the pin material into the hole. Allow the adhesive to cure, then trim the short length sticking out so it doesn't extend beyond the circumference of the lid, as shown in the opening image.

Now a simple turn of the top will “click” the lid into place with the most attractive grain pattern aligned beautifully. Someone suggested a dab of black marker to disguise the pin, but I like the look of the copper dot on the side of the box. ■

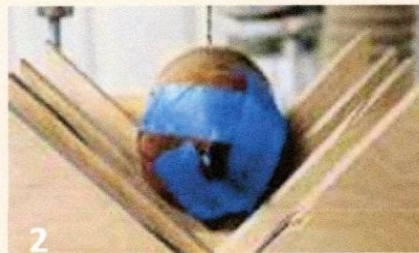
*Alan Falk has been turning wood for about five years, after getting his start with a class taught by Alan Leland. His work can be seen at [plusaf.com/woodshop/woodshop.htm](http://plusaf.com/woodshop/woodshop.htm) and at a few local craft fairs. Alan, a member of the Woodturners Guild of North Carolina, is happily retired in Raleigh, North Carolina, with his wife Claudia.*

## Pin material



The copper core of 14/2-gauge electrical wire is a good choice of pin material.

## Drill pinhole



Tape the lid to the box securely before drilling. Use a shopmade V-block to hold the round box and then drill a pinhole centered on the box/lid juncture.