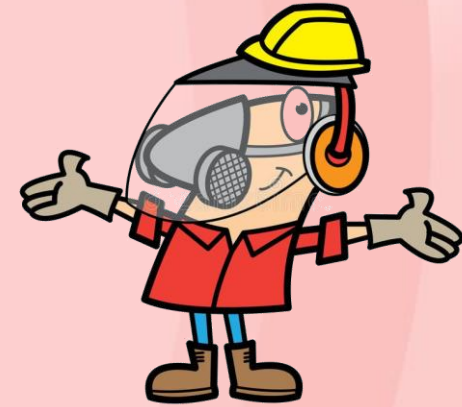
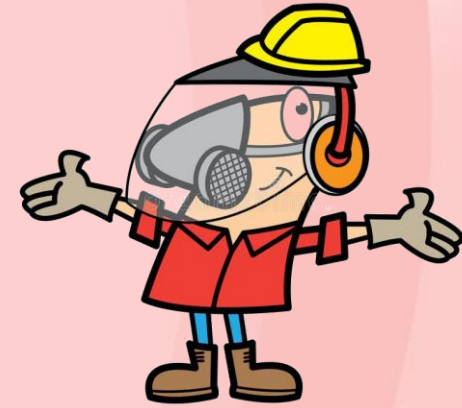


Welcome to
Tri-state Woodturners
Tonight – Casting Resin
with John Dekle



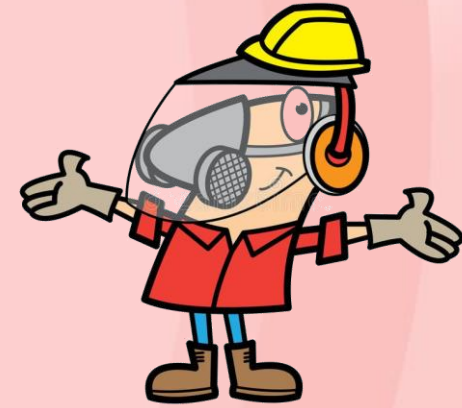
SAFETY

- Avoid Skin Contact
- Avoid Breathing Fumes
- Avoid Breathing Dust.



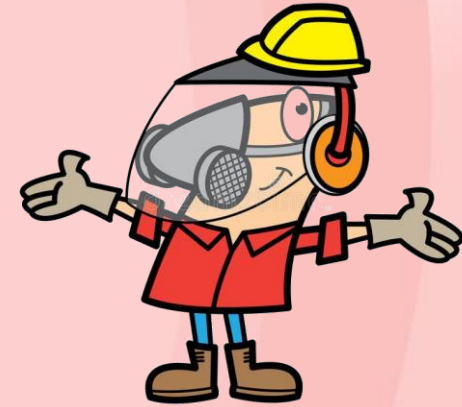
3 TYPES OF RESIN

- Epoxy
- Polyester Resin
- Polyurethane Resin – Focus tonight.



HOW THEY WORK

- Two parts
 - Resin
 - Hardener
- Read directions – Mix differently
- Once mixed chemical reaction.



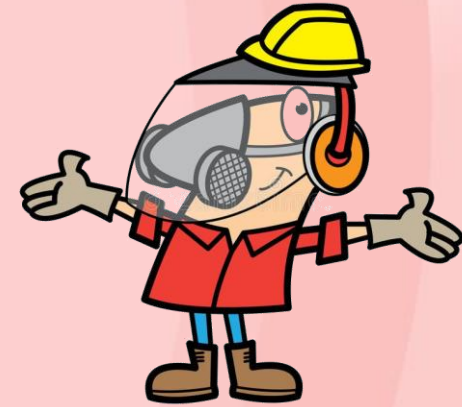
WORK TIME = RESIN



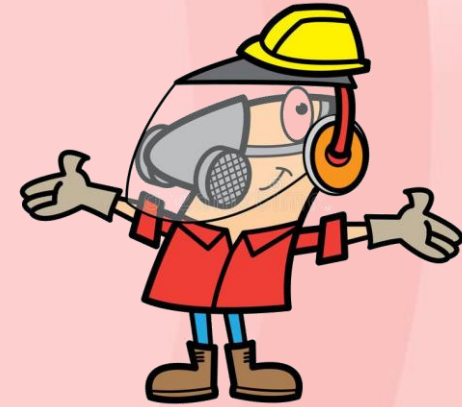
- Change from liquid to solid – Short – 12 min
- Demold – fast – 4 hours
- Toxicity – low
- Workability/Durability – Good (not too brittle).

PROS & CONS

- Expensive
- Good open time to work
- NO water (no green wood)
- Limited shelf life – 3 months
- Sensitive to temperature – no cold.



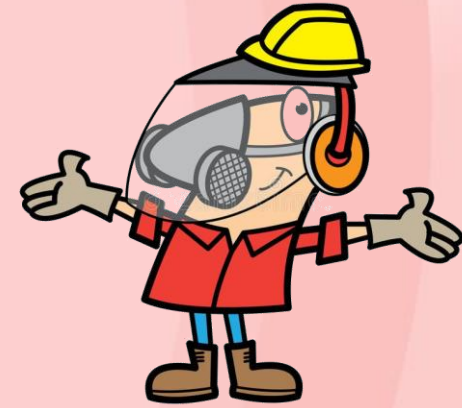
MOLDS



- Vertical
 - PVC (need a base for standing in the pot)
 - M&M containers/Rx bottles
 - Juice containers – plastic
 - Loose particles will sink to the bottom.

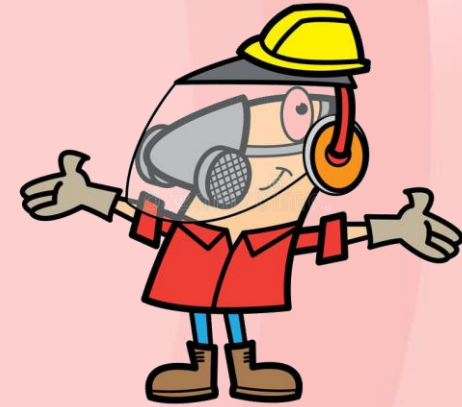
MOLDS

- Horizontal
 - Silicone
 - Home made – High density polyethylene (HDPE)
 - Purchased molds.



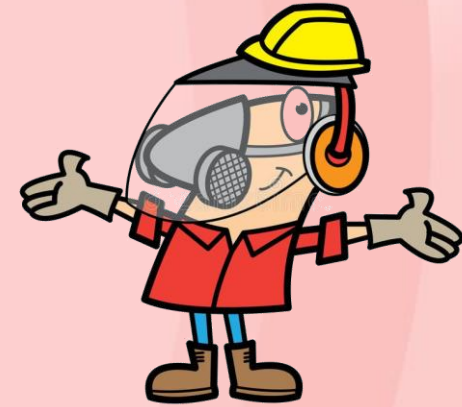
COLOR

- Don't use water based
- Dry Powder – Pearl Ex
- Liquid.



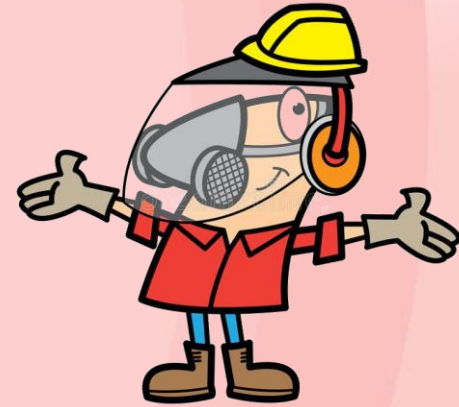
SUPPLIES

- Gloves
 - Cup for mixing
 - Molds (extra)
 - Gram Scale
 - Notebook
 - Pressure Pot & air compressor.
- Colors
 - Sticks for mixing
 - Mold release (Pam)
 - Measuring spoons
 - Timer (thermometer)

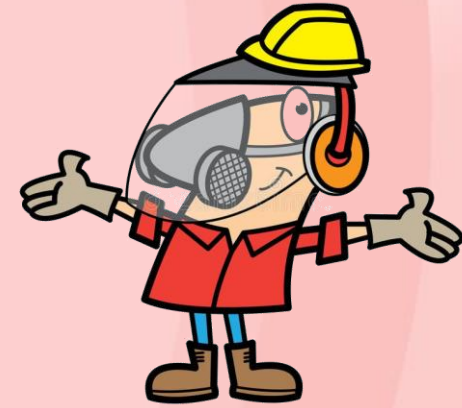


PROJECTS

- Pen blanks - Handles
- Bottle stoppers - Bowls
- Jewelry – Encapsulation & free forms
- Filling cracks and embellishments.

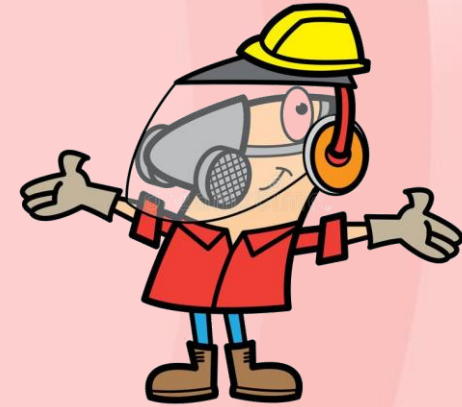


SAMPLES

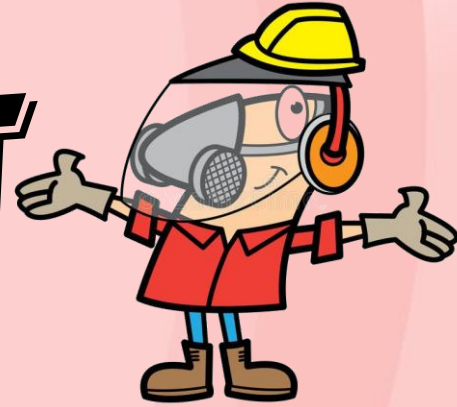


RESOURCES

- Zac Higgins – The Beginners Guide to Resin Casting - \$10
- www.nvwoodwerks.com .



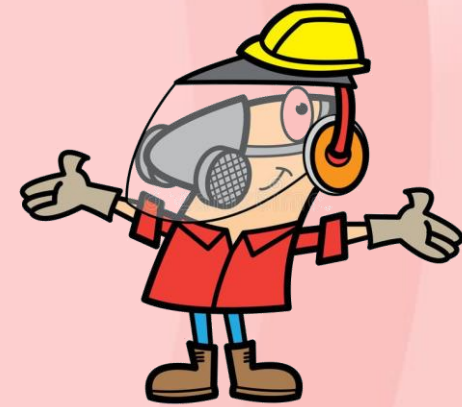
REMOVING FROM POT



- After 4 hours
- Release the air
- Open the pot & remove items
- Demold items.

SAMPLE KEY RING

- After demolding
- Mill the ends
- Knock off square corners
- Mount on Lathe and turn.



TOOLS & FINISH



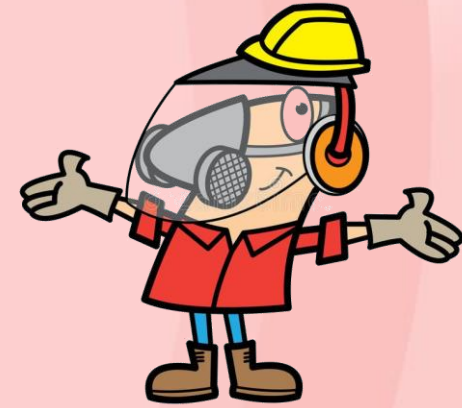
- Regular turning tools (roughing gouge and maybe a detail spindle gouge)
- Some prefer negative rake carbide tool
- Wet sand with micromesh
- Dry
- Hut Ultra Gloss Plastic Polish & Buff.

READY TO POUR



- Be sure Pot is ready – Hose connected
- Seal is properly in place
- Molds ready with extra if needed
- Colors ready & cups for mixing
- Timer ready – gloves on – scale set up
- Paper towels available – notes ready.

READY TO POUR



- Measure by weight
- The smaller the more accurate
- Pour
- Start timer once together
- Stir thoroughly, scrape edges
- Separate cups for different colors.