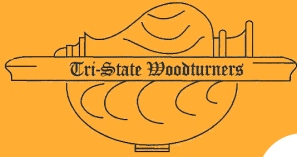


## TRI-STATE WOODTURNERS



Meeting Location:

8361A Dayton Pike

Soddy Daisy TN

(Horsin' Around fac.)

### IN THIS ISSUE

Sept. demo	1
Aug. meeting	2
President's Corner	3
Club Challenge 2018	
Officers & Sponsors	
Treasurer Rpt & Web	4
Up coming	
Help available	
Interview	5
Club Challenge Pics	6
Show & Tell Pics	8
Pens for Troops	12
Project Globe ornament	13

# Cuts and Scrapes

WWW.TRISTATEWOODTURNERS.COM

SEPTEMBER 2018 NEWSLETTER

## David Sapp

### Sep. Demonstrator

David has been interested in woodworking from a very young age. He was introduced to woodturning in High School Shop Class. Another student had started a laminated Cherry bowl but the tearout was so bad he was going to throw it away. David took the bowl, sanded it to completion over the course of several shop classes and what emerged was a beautiful bowl. He was hooked. As with most Woodturners, David was largely self-taught, taking a few Woodturning classes along the way and attending some demonstrations.

After starting up the Woodcraft Store in 2003, He had lots of opportunities to learn from other Woodturners, and at the same time he joined the TAW. Being an active member in the TAW afforded David the opportunity to really improve his turning skills. His focus was always on learning how to turn like the masters! Richard Raffan was the turner he admired most. Richard was in Nashville for demonstrations and classes, and David was afforded a lot of time with Richard. He was going to take one of the classes, but Richard gave David the best piece of turning advice he ever received..." You will learn more by teaching others than you will ever learn by taking a class,

you should be out here teaching instead of behind that lathe!" How right he was!!! Teaching others forc-

es you to understand what you are doing with the turning tool, with your stance, with your designs and this forces you to learn as well!

David has been teaching various turning classes at Woodcraft for more than 10 years. He likes to turn projects that are smaller in scale, like Boxes and Ornaments.

David will be demonstrating a basic bowl. After teaching beginning students for the last eight years at the Woodcraft store in Nashville he has learned how to demonstrate the basic cuts needed to turn a great looking

Tri-State Woodturners an  
official chapter of AAW

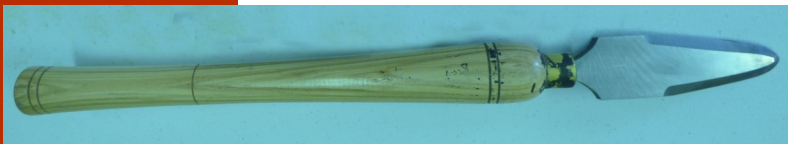
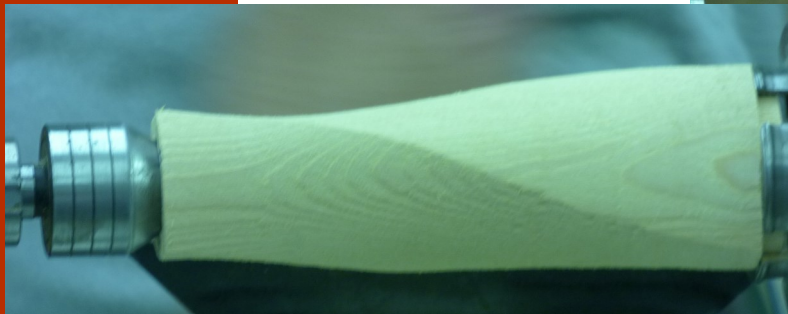


basic bowl. He will cover the basic cuts, tool presentation to the wood and most importantly how to rub the bevel and prevent a catch! He will also show how the curvature of the bowl is made with the legs not the hands. Time permitting he will cover how to sharpen and properly utilize the skew to do a v-cut and turn a bead. This demo will cover the role of each and in the execution of this simple but hard to master cuts.

# August Meeting with Brian Horais



Brian demonstrated turning things that were not round by making them off-set on the lathe. Once you get away from thinking turning has to be round there is a whole world of possibilities available. He showed how to mark pieces and turn off-center then went on to show how to plan this type of turning into things like segmented pieces. Brian provided excellent extensive notes to help turners remember and implement the principles he taught. A couple of the tools pictured below, used and recommended by Brian, were the Microplane carving tools and the home-made negative rake scraper.







# President's Corner

I still want to encourage members to support the Beads of Courage effort. We'll have a gift certificate drawing this month just for that category.

Remember the September's president's challenge is a Celtic Knot. On anything, let your mind go wild. The more you participate the more likely you'll win a special prize at the end of the year. And we'll have a drawing at each meeting for challenge participants to win a Woodcraft gift certificate. I'd like to thank all that participate in the challenges.

Brian Horais did a great job doing off center turning. I went home that night and tried my hand at it. I can see already a new tool for the lathe, seems I need a smaller drive center. At any rate turning these are very interesting. If you haven't tried one, you should.

This month will be business as usual. So bring your show and tell and other items. Also support the wood auction.

**Remember when you drop your things off for the Presidents Challenge or Show and Tell, fill out a provided form that will have your name, type of wood and finish on the piece. This will help during the Show and Tell segment as well as John as he does our newsletter.**

Finally a word about safety. Wear Appropriate Clothing. Whenever working in the wood shop, remember to avoid loose-fitting clothing, as you wouldn't want any of your attire to become entangled in your lathe. Wear clothes that are comfortable for the environment in which you're working, but also will protect your body from any wayward wood chips that might result from cutting. Before beginning, remember to remove any dangling jewelry such as neck chains, bracelets or loose watches.

## TSW CLUB OFFICERS

- |   |  |
|---|--|
| <b>Josh Bowman</b><br>(423) 280-0954      | President<br>jsbowman@bellsouth.net              |
| <b>Jim Dvorak</b><br>(423) 883-2212       | Vice President<br>dvorak6258@epbf.com            |
| <b>Charles Jennings</b><br>(423) 902-1482 | Treasurer<br>cwjwoodturner@epbf.com              |
| <b>John Dekle</b><br>(423) 508-8051       | Secretary/Newsltr Editor<br>Turning411@Yahoo.com |
| <b>Doug Spohn</b><br>(423) 240-4386       | Program Director<br>djspohn@epbf.com             |
| <b>Ed Lewis</b><br>(423) 344-7295         | New Member Mentor<br>EdLewis3267@gmail.com       |
| <b>Jeff Wheeler</b><br>(201) 841-8896     | Librarian<br>47wheeler@gmail.com                 |

A chapter of the  
American Association  
of Woodturners



2018 Club Challenge					
January	Spindle—	10 submitted	July	Utilitarian—	8 submit
February	Wall Art -	11 submitted	August	Plate—	8 submitted
March	Scoop—	9 submitted	September	Celtic Knot	
April	Beads of Courage—	6 sub	October	Snowman	
May	Goblet—	9 submitted	November	Inside Out	
June	Natural Edge -	7 submit	December	Silent Auction Item	

The following sponsors give generously to Tri-State Woodturners and we want to encourage members to support them generously



5824 Brainerd Rd., Chatt. TN 373411 + (423) 710-8001



CRAFT SUPPLIES USA  
THE WOODTURNERS CATALOG

www.woodturnerscatalog.com +(800)551-8876

# Treasurer's Report



# The Web

Starting Balance		3,513.04
Income:		154.00
Wood Raffle	110.00	
Donation	4.00	
Dues	40.00	
Expenses:		125.00
Demonstrator	125.00	
Ending Balance		3,542.04

The challenge next month is a Snowman. How simple— anyone or should I say EVERYONE could do this one. Maybe you've made one before but the idea of the challenge is not to bring old stuff you did before but to try new things. Like be creative in making your snowman (could be a snowlady). Or how about a couple? The internet has a host of YouTube videos on making snowmen. Do a google search and get some new ideas.

Maybe you will see something on-line that will trigger your creative imagination and you can come up with something new or unusual. I've seen a lot of ornaments but what about a candle holder or salt & pepper shakers? You may want to use your snowman as part of a clock or music box or on a Beads of Courage Box. The sky is the limit, let's show our creativity.



## TURNING SOUTHERN STYLE    OTHER OPPORTUNITIES

SEPT. 21—23, 2018

DALTON, GA

### Segmented Woodturners Symposium

**Location:** St. Louis, Missouri

**Dates:** Oct. 11— Oct. 14, 2018

### Virginia Woodturning Symposium 2018

**Location:** Fishersville, VA

**Dates:** Nov. 3— Nov. 04, 2018

### Tenn Association of Woodturners Sym.

**Location:** Franklin, TN

**Dates:** Jan. 25—Jan. 26, 2019

Jan was grateful for the donation of \$140 members gave last month for tools and motors etc. from Ed Langham.

That symposium is next week-end. Follow this link to get all the info about the Turning Southern Style 2018 <https://gawoodturner.org/symposium/>

A full list of demonstrators and the topics they will cover is available on this web site. This is a great event many attend.

# Free personalized help in Turning

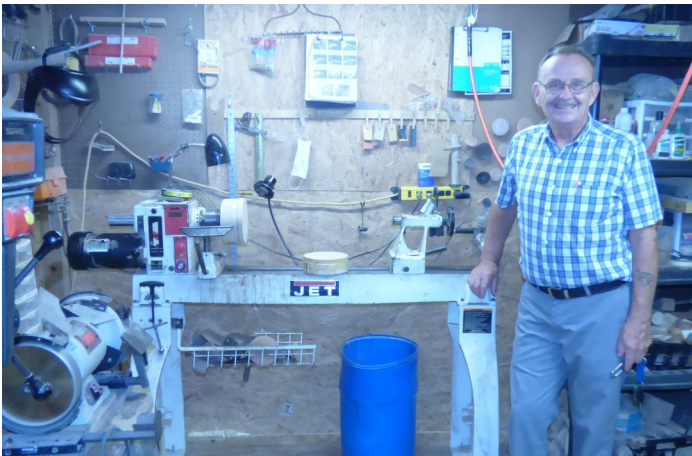


Ed Lewis has been turning for 42 years and has graciously offered to open his shop on Saturday mornings to help newbies. This is as good as it comes. Ed is not only skilled as a turner but an excellent teacher. Many TSW have gained valuable lessons from him over the years to where they are now very proficient. Call Ed at (423) 344-7295 or talk with him at the TSW meeting Sat. This is an official function of TSW.

# Next TSW Meeting Sat. Sept. 15, 2018



# Interview with TSW Member



The size of ones work space does not determine the quality of turning they do. Working out of a 12 x 12 shop Les Isbell produces a lot of beautiful creations. Being retired from 30 years as the head biomedical engineer at Memorial and another 13 years as manager of the service department for a copier service gives him time to almost daily go to his shop and exercise his creativity. In 2013 John Dekle encouraged him to take up the activity of woodturning at which time he joined TSW and has learned so much from the demonstrations.

His first mini Jet was soon replaced with a Jet 1642. The smaller Jet was loaned to a friend who turned many pens before passing away from cancer, then the lathe came back to Les to continue it's usefulness in turning pens. Les emphatically says the Turning Southern Style Symposium has been one of his greatest influences in turning. This Walnut vase was one of Les' favorite pieces which was given to a young lady for graduation.



When asked what he likes turning most, his quick response was "wood". He turns a lot of different things and finds great joy in the variety. The club challenges have stretched him to turn items he otherwise would not have tried. His favorite wood to turn is Dogwood and his favorite tools are the bowl gouge and skew. Slot turn poly and spray lacquer are some of his favorite finishes

**CUTS AND SCRAPES**

Les often turns wood daily and most of it he gives away. He often shares some of his unique creations with the club in the challenge and



instant gallery like these in March.

His homemade doughnut chuck is one of his favorite jigs which has been very helpful in turning the bottom of bowls. His rolling tool



storage cart can easily be moved where needed and keeps tools handy. Some-

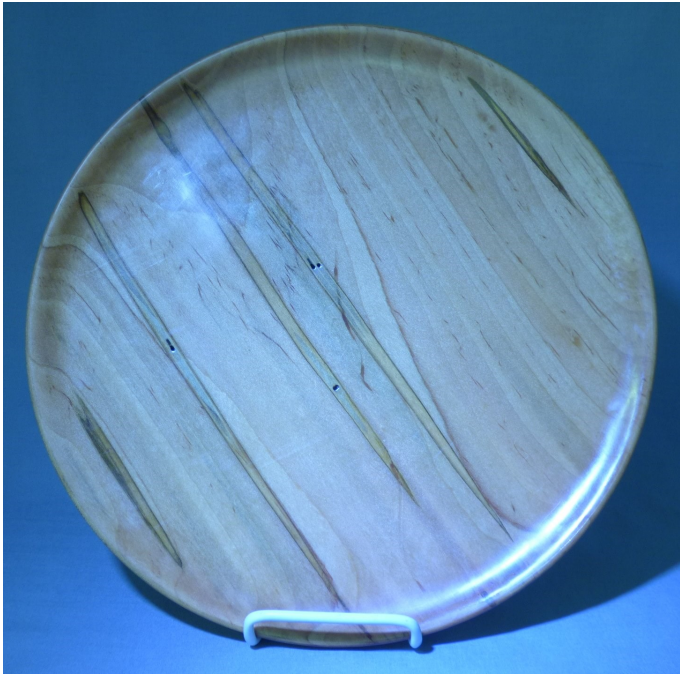
thing new Les is trying is to use Elmer's Glue to seal green wood.

When asked about what he needs help from TSW he replied, "how to say NO when someone offers him wood." Can you relate? He did share some good advise for new turners: "Keep you tools sharp, don't get in a hurry and don't turn when you are tired." A great reminder for all turners.





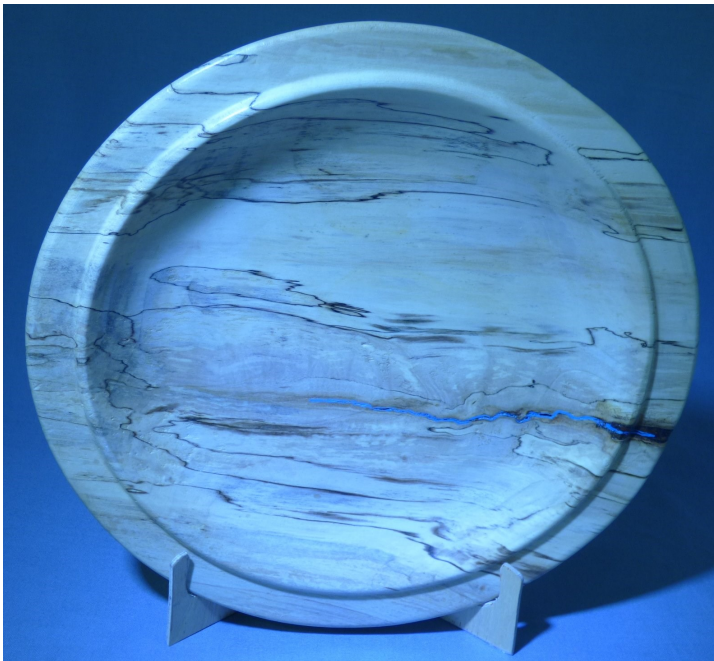
# Club Challenge for Aug. - Plate



Beverly deYampert  
Ambrosia Maple Plate



John Dekle  
A Little Bear in the Tree Plate (Maple)



Don Moore  
A River Running Through (Maple)



Doug Spohn  
Ambrosia Maple Plate



# Club Challenge for Aug. - Plate



Jim Dvorak—Glittering Cherry Plate

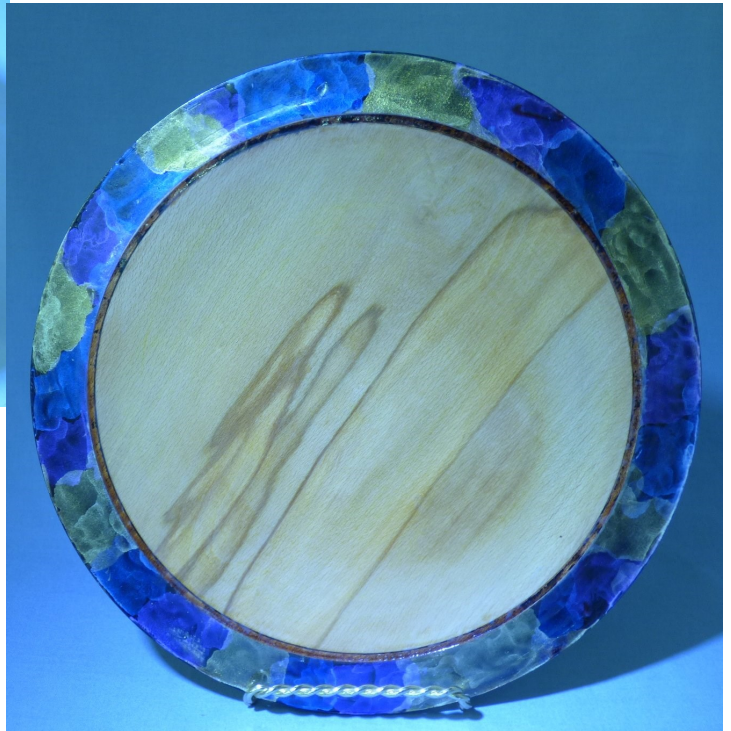


Les Isbell—Pithy Box Elder Plate



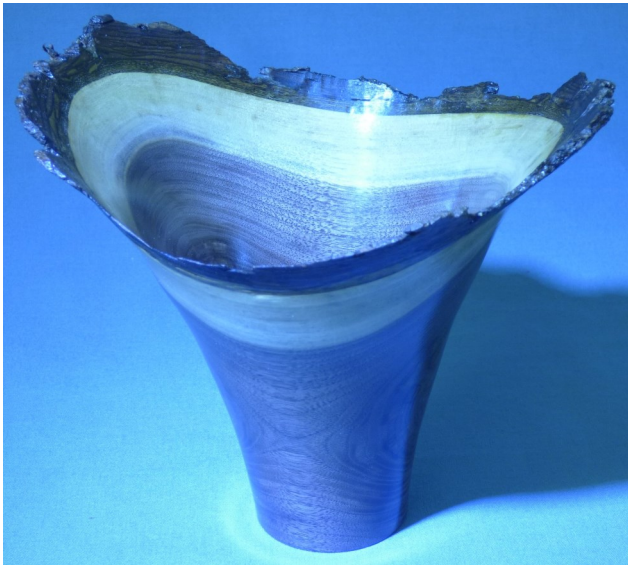
Charles Jennings  
Walnut Cake Plate on Stand

Larry Skaggs  
Cosmic Cloud Plate





# Show, Tell & Learn - Instant Gallery



Art Parry  
Walnut Vase



Bob Hough  
Pyrography  
on a recipe  
box



Don Moore  
2 Beads of  
Courage Boxes  
& 2 Bowls  
Look at the  
difference the  
Epoxy finish  
makes on it





# Show, Tell & Learn - Instant Gallery



Created by Les Isbell

2 Utility Peelers and 4 Bowls



Made by John Dekle

2 Weed Pots

Feather Pot

Box Top

Executive top





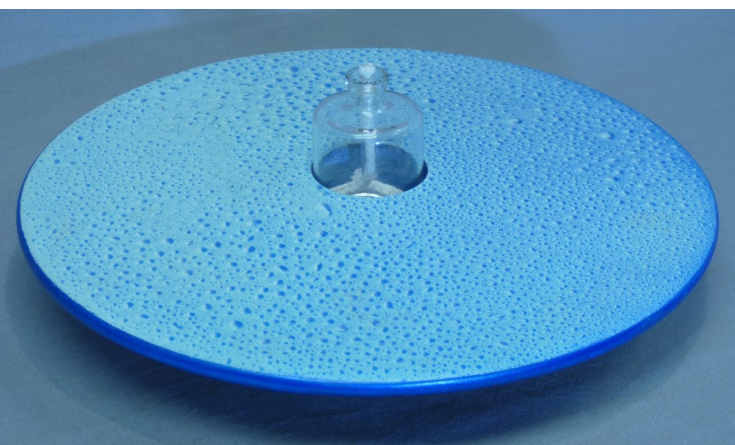
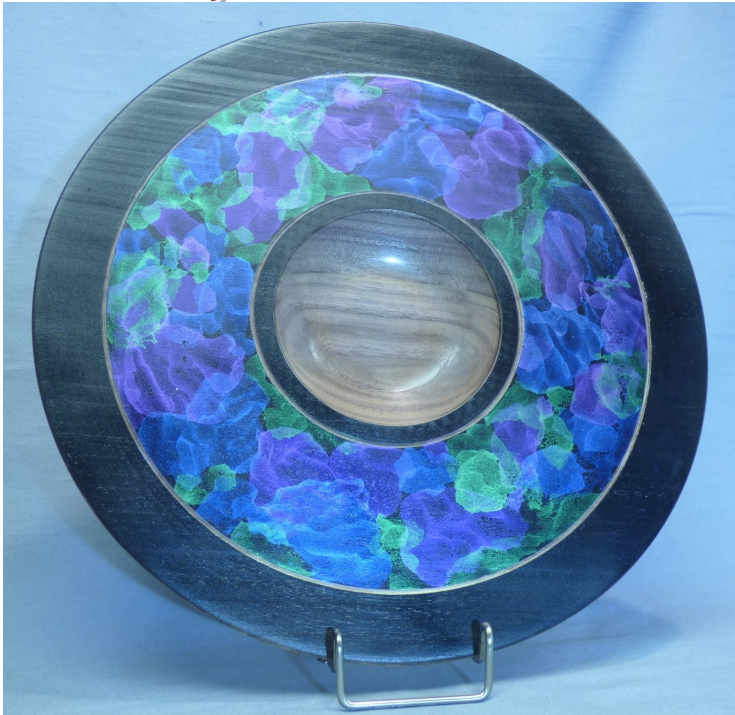
# Show, Tell & Learn - Instant Gallery



The above cake plates, Oak natural edge bowl, two small bowls (Black Maple & Dogwood) and the two decorative plates originated in Charles Jennings' studio



# Show, Tell & Learn - Instant Gallery



This page created by John Dekle  
 Left side: Cosmic Cloud Bowl, Cosmic Candle holder, Rain Storm Candle—Right side: M&M Box Elder Bowl, Natural Edge Poplar Bowl, Blue Wave Bradford Pear Bowl, Cosmic Pen



# Show, Tell & Learn - Instant Gallery



Josh Bowman—practicing the Pyrography taught by Myra Orton in the July TSW Workshop & meeting



John Dekle—Design opportunity from a failed Walnut Plate with a little Maple for accent

## Pens for the Troops



Kits available for you at the next meeting

These pens were made by  
Les Isbell, John Dekle & Jim Dvorak



TSW have made and turned in 120 pens so far this year



## Project—Globe Ornament

by Jake Niedling 8-28-2018



This Globe style ornament is an easy and quick project. Time to complete should be around 60 minutes. Hopefully, you will enjoy making them for your family, friends or local charity. Also, fun to make a bunch (unpainted) and let your children or grandchildren paint them up for a special memorable ornament.

I have taken photographs of the steps, so you can see how I make these ornaments. Of course, if you have questions, call me at 865-607-4808 or email me at [jakej@frontiernet.net](mailto:jakej@frontiernet.net).

Let's get started: You will need to turn two pieces, the Globe and Cap.

**Remember to wear your safety equipment whenever the lathe is on, such as eye and dust protection.**

### Turn the Globe:

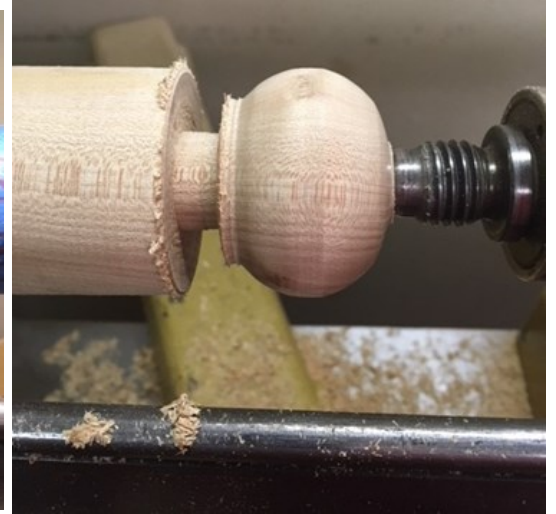
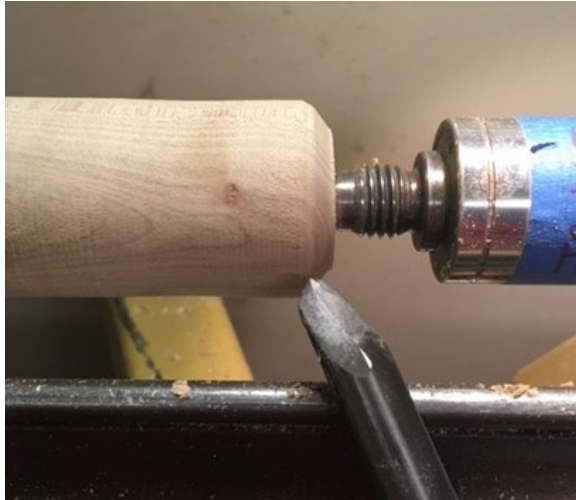
**Step 1**— Mount a piece of wood that is approximately 2" x 2" x 4 to 5" long between centers on the lathe. Any kind of wood will work, but light colored wood works best for coloring. Turn a tenon on one end to fit your scroll chuck. I turn the tenon down to about 2" diameter to fit my jaws. This will just leave the 4 corners to rest up against the scroll chuck. If you don't have a scroll chuck, you will need to glue the tenon into a glue block mounted on a face plate.



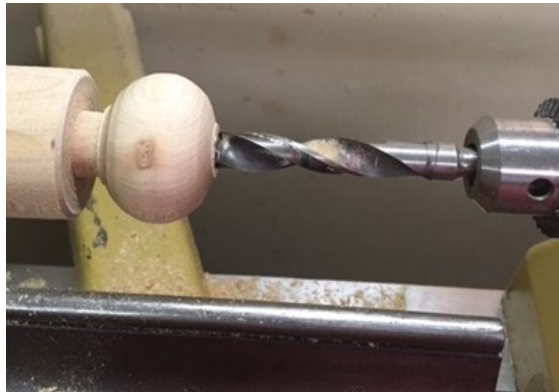


## Project—Globe Ornament

**Step 2** – Begin rough shaping the globe with a 3/8" bowl or spindle gouge. The shape can be any design ( round, egg shape, squatty globe, tear drop, flat center band with curved top and bottom, etc.). I try to turn at least 1/2 of the backside, so I can envision where the bottom will end up.



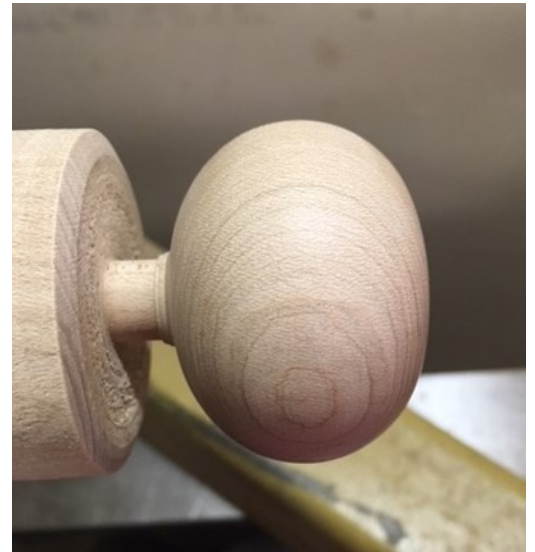
**Step 3** - Drill a 1/2" hole about 3/4 of the way through the globe using a drill chuck in the tail stock.



**Step 4** - Take the stem down to around 3/4" diameter. You will probably want to do this with a parting tool. Do the final the shaping of the top and bottom of the globe using a 3/8" spindle gouge.



**Step 5** – Sand the globe starting with 180, 220 then 320 grit.





**Step 6** – Part off the globe using a parting tool and a saw.



**Step 7** - Using the wood still in the scroll chuck, make a jamb chuck with a 1/2" tenon to fit the top of the globe. The jamb chuck should be curved inward to match the curve of the globe to



**Step 8-**

With a good tight fit, you should be able to turn off the bottom side with a 3/8" spindle gouge. If needed, wrap some blue painters tape around the globe and the jamb chuck before turning the bottom. Sand the globe starting with 180, 220 then 320 grit



**Step 9** - Remove the completed globe.

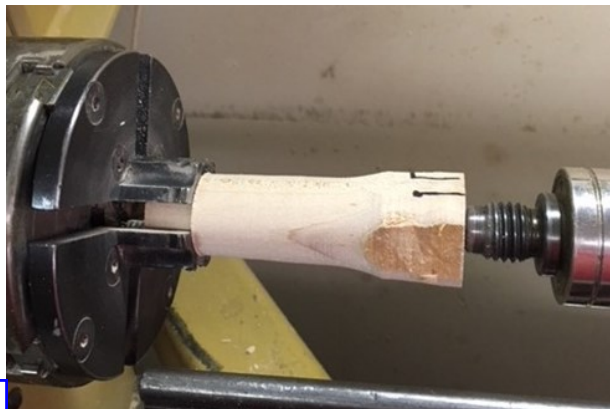
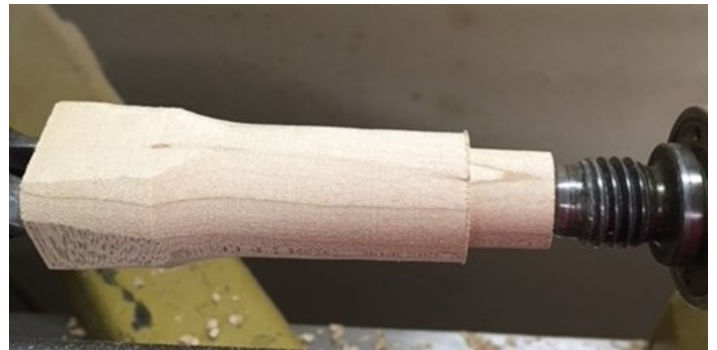




# Project—Globe Ornament

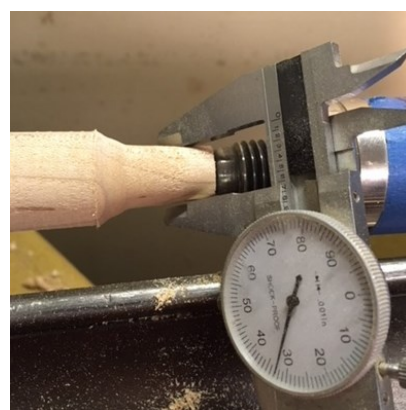
## Turn the Cap

**Step 10 -** A piece of wood that is 1" x 1" x 2 to 3" long. The cap should be a contrasting color to the globe. I like to use maple and dye it black. Other woods or colors will work as well. Turn a tenon on one end using a parting tool to fit your small pin jaws or collet chuck. If you don't have small jaws, then glue the tenon into a waste block on a face plate or larger chuck jaws.

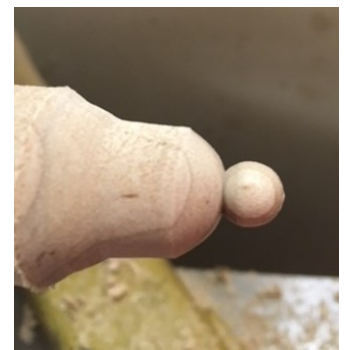


**Step 11**

Measure the size of the cap required for the globe using calipers. For a 1/2" hole in the globe, the cap should be around 3/4" to 7/8" diameter. Turn a 2" section near the tail stock down to this cap size.



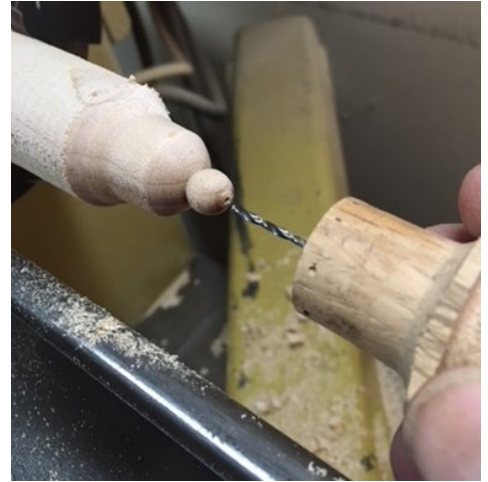
**Step 12-** Begin shaping the cap. Again, the design is what ever you like. I like a small ball on top of a curved cap





# Project—Globe Ornament

**Step 13 -** Drill a hole in the ball for a screw eye. I like to use a skew on its side and use the long point to make a starter hole. Drill 1/16" hole for 217-1/2 size screw eye. If you use a larger screw eye size, then use the appropriate size drill bit. I use a drill mounted in a block of wood and hold it by hand. You could use a drill chuck, pliers or pen chuck to hold the drill bit.



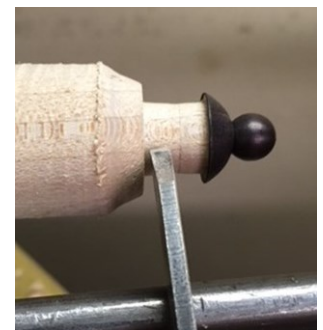
**Step 14 -** Use a parting tool to carefully cut the tenon on the cap to fit the globe. Measure the hole which should be 1/2" diameter. Turn and check the tenon often to get a close fit to the globe.



**Step 15 -** Use a small skew on its side to undercut the cap, so it will fit tightly against the globe. Sand the Cap starting with 180, 220 then 320 grit.



**Step 16 -** Coloring the cap is optional. I like to use a black stain or dye on maple. Other options are endless, like acrylic paints, India inks or colored markers. Caution when using color markers, they may run when the finish is applied. Once dry, part off the cap, leaving at least 1/2" to glue into the globe.





# Project—Globe Ornament

**Step 17** - Glue the cap into the globe. The glue choice is whatever you prefer. I have always used medium CA glue without any problems. If the fit is loose, then an epoxy glue would be better.

**Step 18**- The globe can now be decorated, if you choose. One option is to use a woodburner to add some decoration. I often will burn 4 star patterns around the globe. Many other options are possible, using paints as well.



**Step 19**- For final finish, I use a gloss spray can lacquer. I will apply 3 to 4 light coats. I will rub between coats with a fine steel wool.

**Step 20**- Finished Globes. Have fun and I hope you enjoy making these ornaments.

