



The Hiking Reindeer

Notes on our changes and additions to the basic pattern

Original design by
TheTwistedYarn.com

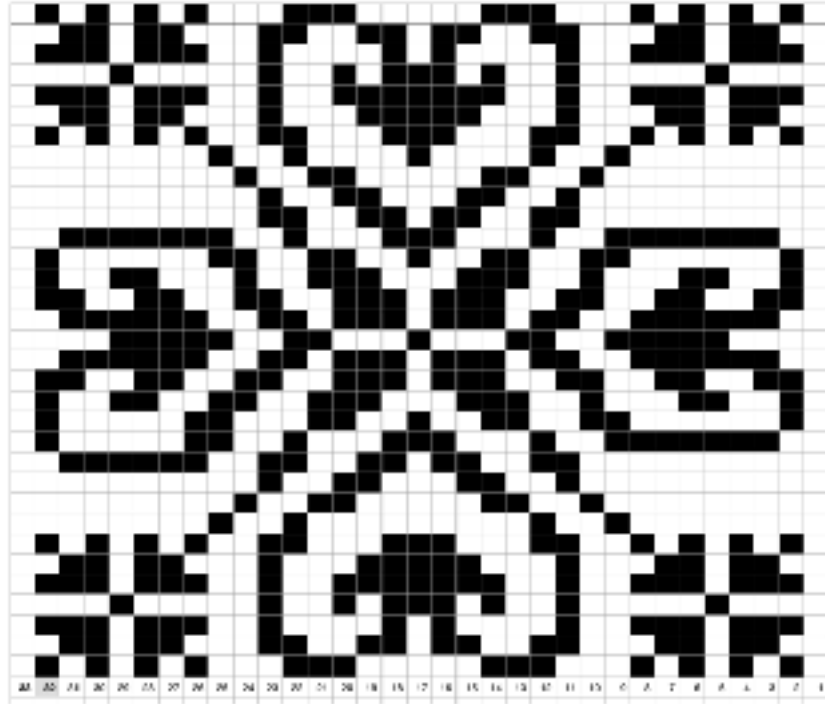
Our pattern variation is a modified version of the original design by TheTwistedYarn.com. We modified the cowl in these ways:

- Knit an interior of equal height to line the cowl and hide the stranding.
- Employed a faux picot edge to create a delightful folding edge for the interior pattern.
- Ditched the rib edging.

Color Work Interior

The color work pattern in green and white is 33 stitches wide and repeated 6 times. Your total stitch count is 198 stitches. The yarn provided in the kit is only for the exterior. We do suggest doing a lining to hide your stranding, but also to protect it as well. For warmer climates this may be a bit much. Our suggestion then is to use a twist or pick up method to decrease width of strands. For

longer distances between color A and B, you can employ the “Ladderback Jacquard” method to maintain a stretchier finish.



Above: Sewn edge and interior view. Below: Picot edge and interior view.



Faux Picot Edge

You will have a number of stitches cast on divisible by 2. A faux picot edge is simply the pattern repeat of:

*Yarn Over (yo), Knit 2 Together (k2tog), *repeat back to beginning of round (bor).

Then switch to interior colors and begin knitting alternate patterns. You can do a solid interior but you will get bored so try to spice it up with a pattern. See above chart for our choice.

Once you have completed front and interior then you will fold the pieces so that the interior lines up with the reindeer pattern and sew edges. You can crochet but it will give you a heavy edge. Better to keep it simple. See images to the left.