



Certificate of Analysis

CANNABUSINESS LABORATORIES, LLC

Customer:

PJ Smith Enterprises, LLC
PO Box 685
New Castle, KY 40050

Received Date **1/13/2025**
COA Released **1/15/2025**

Comments

Sample ID **250113014**
Order Number **CB250113005**
Sample Name **J227E**

External Sample ID

Batch Number **J227E**

Product Type **Other**
Sample Type **Other**

CANNABINOID PROFILE

Analyte	LOQ (%)	% Weight	mg/mL
CBC	0.01	0.166	1.548
CBD	0.01	3.771	35.07
CBDa	0.01	0.040	0.369
CBDV	0.01	0.016	0.145
CBG	0.01	0.920	8.557
CBGa	0.01	ND	ND
CBN	0.01	ND	ND
d8-THC	0.01	ND	ND
d9-THC	0.01	0.143	1.329
THCa	0.01	ND	ND
Total Cannabinoids		5.055	47.01
Total Potential THC		0.143	1.329
Total Potential CBD		3.805	35.39
Total Potential CBG		0.920	8.557

Ratio of Total Potential CBD to Total Potential THC **26.61 : 1**

Ratio of Total Potential CBG to Total Potential THC **6.43 : 1**

**Total Cannabinoids refers to the sum of all cannabinoids detected.*

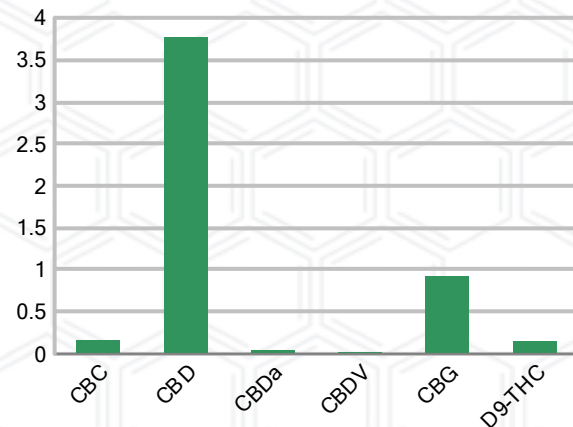
**Total Potential CBD = (0.877 x CBDa) + CBD. *Total Potential THC = (0.877 x THCa) + THC. *Total Potential CBG = (0.877 x CBGa) + CBG.*

**Total Potential THC/CBD are calculated to take into account the loss of an acid group during decarboxylation.*

SAMPLE IMAGE



CANNABINOIDS % Weight



J. Hobgood
Laboratory Manager

SIGNATURE

Jamie Hobgood

LABORATORY MANAGER

01/15/2025 12:03 PM

DATE

This product has been tested by CannaBusiness Laboratories using validated testing methodologies and a quality system. Values reported relate only to the product tested. CannaBusiness Laboratories makes no claims as to the efficacy, safety, or other risks associated with any detected or non-detected levels of any compounds reported herein. This Certificate shall not be reproduced except in full, without the written permission of CannaBusiness Laboratories. Photo is of sample received by the lab and may vary from final packaging. The results apply to the sample as received.





Certificate of Analysis

CANNABUSINESS LABORATORIES, LLC

Customer

PJ Smith Enterprises, LLC
PO Box 685
New Castle, KY 40050



Sample Name: J227E

Sample ID: 250113014

Order Number: CB250113005

Product Type: Other

Sample Type: Other

Received Date: 01/13/2025

Batch Number: J227E

COA released: 01/15/2025 12:03 PM

Potency (mg/mL)

Date Tested: 01/14/2025

Method: CB-SOP-028

Instrument:

0.143 %	3.805 %	5.055 %	47.01 mg/mL
Total THC	Total CBD	Total Cannabinoids	Total Cannabinoids

Analyte	Result	Units	LOQ	Result	Units
CBC (Cannabichromene)	0.166	%	0.010	1.548	mg/mL
CBD (Cannabidiol)	3.771	%	0.010	35.07	mg/mL
CBDa (Cannabidiolic Acid)	0.040	%	0.010	0.369	mg/mL
CBDV (Cannabidivarin)	0.016	%	0.010	0.145	mg/mL
CBG (Cannabigerol)	0.920	%	0.010	8.557	mg/mL
CBGa (Cannabigerolic Acid)	ND	%	0.010	ND	mg/mL
CBN (Cannabinol)	ND	%	0.010	ND	mg/mL
D8-THC (D8-Tetrahydrocannabinol)	ND	%	0.010	ND	mg/mL
D9-THC (D9-Tetrahydrocannabinol)	0.143	%	0.010	1.329	mg/mL
THCa (Tetrahydrocannabinolic Acid)	ND	%	0.010	ND	mg/mL



J. Hobgood
Laboratory Manager

SIGNATURE

Jamie Hobgood

01/15/2025 12:03 PM

DATE

NT = Not tested, ND = Not detected; LOQ = Limit of Quantitation; <LOQ = Detected; >ULOL = Above upper limit of linearity; CFU/g = Colony forming units per 1 gram; TNTC = Too numerous to count

This product has been tested by CannaBusiness Laboratories using validated testing methodologies and a quality system. Values reported relate only to the product tested. CannaBusiness Laboratories makes no claims as to the efficacy, safety, or other risks associated with any detected or non-detected levels of any compounds reported herein. This Certificate shall not be reproduced except in full, without the written permission of CannaBusiness Laboratories. Photo is of sample received by the lab and may vary from final packaging. The results apply to the sample as received.