



Certificate of Analysis

CANNABUSINESS LABORATORIES, LLC

Customer:

PJ Smith Enterprises, LLC
PO Box 685
New Castle, KY 40050

Received Date **12/8/2022**
COA Released **12/12/2022**

Comments

Sample ID **221208007**
Order Number **CB221208002**
Sample Name **CBD 2400mg**

External Sample ID

Batch Number **J222E**
Product Type **Other**
Sample Type **Other**

CANNABINOID PROFILE

Analyte	LOQ (%)	% Weight	mg/g
CBC	0.01	0.178	1.779
CBD	0.01	4.335	43.35
CBDa	0.01	0.061	0.611
CBDV	0.01	0.020	0.199
CBG	0.01	0.641	6.414
CBGa	0.01	ND	ND
CBN	0.01	ND	ND
d8-THC	0.01	ND	ND
d9-THC	0.01	0.151	1.509
THCa	0.01	ND	ND
Total Cannabinoids		5.386	53.86
Total Potential THC		0.151	1.509
Total Potential CBD		4.389	43.89
Total Potential CBG		0.641	6.414

Ratio of Total Potential CBD to Total Potential THC **29.07 : 1**

Ratio of Total Potential CBG to Total Potential THC **4.25 : 1**

**Total Cannabinoids refers to the sum of all cannabinoids detected.*

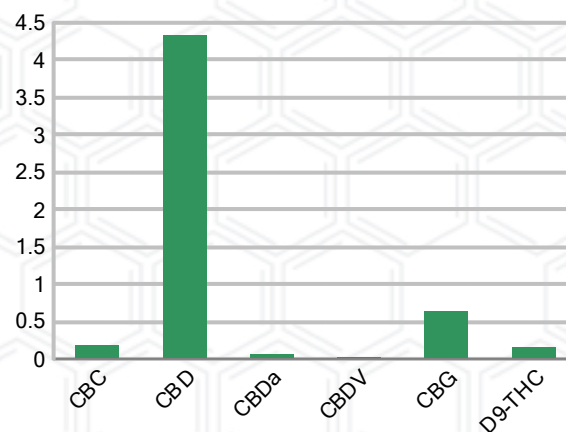
**Total Potential CBD = (0.877 x CBDa) + CBD. *Total Potential THC = (0.877 x THCa) + THC. *Total Potential CBG = (0.877 x CBGa) + CBG.*

**Total Potential THC/CBD are calculated to take into account the loss of an acid group during decarboxylation.*

SAMPLE IMAGE



CANNABINOIDS % Weight



J. Hobgood
Laboratory Manager

SIGNATURE

Jamie Hobgood

LABORATORY MANAGER

12/12/2022 10:08 AM

DATE

This product has been tested by CannaBusiness Laboratories using validated testing methodologies and a quality system. Values reported relate only to the product tested. CannaBusiness Laboratories makes no claims as to the efficacy, safety, or other risks associated with any detected or non-detected levels of any compounds reported herein. This Certificate shall not be reproduced except in full, without the written permission of CannaBusiness Laboratories. Photo is of sample received by the lab and may vary from final packaging. The results apply to the sample as received.



Certificate of Analysis

CANNABUSINESS LABORATORIES, LLC

Customer

PJ Smith Enterprises, LLC
PO Box 685
New Castle, KY 40050



Overall Batch Results	
Microbial Screen	Residual Solvents
Terpenoids	
Pesticide	Moisture Content
Potency	Water Activity
Mycotoxins	Heavy Metals

Sample Name: CBD 2400mg

Sample ID: 221208007

Order Number: CB221208002

Product Type: Other

Sample Type: Other

Received Date: 12/08/2022

Batch Number: J222E

COA released: 12/12/2022 10:08 AM

Potency (mg/g)

Date Tested: 12/09/2022

Method: CB-SOP-028

Instrument:

0.151 %	4.389 %	5.386 %	53.86 mg/g
Total THC	Total CBD	Total Cannabinoids	Total Cannabinoids

Analyte	Result	Units	LOQ	Result	Units
CBC (Cannabichromene)	0.178	%	0.010	1.779	mg/g
CBD (Cannabidiol)	4.335	%	0.010	43.35	mg/g
CBDa (Cannabidiolic Acid)	0.061	%	0.010	0.611	mg/g
CBDV (Cannabidivarin)	0.020	%	0.010	0.199	mg/g
CBG (Cannabigerol)	0.641	%	0.010	6.414	mg/g
CBGa (Cannabigerolic Acid)	ND	%	0.010	ND	mg/g
CBN (Cannabinol)	ND	%	0.010	ND	mg/g
D8-THC (D8-Tetrahydrocannabinol)	ND	%	0.010	ND	mg/g
D9-THC (D9-Tetrahydrocannabinol)	0.151	%	0.010	1.509	mg/g
THCa (Tetrahydrocannabinolic Acid)	ND	%	0.010	ND	mg/g



J. Hobgood
Laboratory Manager

Jamie Hobgood

12/12/2022 10:08 AM

SIGNATURE

DATE

NT = Not tested, ND = Not detected; LOQ = Limit of Quantitation; <LOQ = Detected; >ULOL = Above upper limit of linearity; CFU/g = Colony forming units per 1 gram; TNTC = Too numerous to count

This product has been tested by CannaBusiness Laboratories using validated testing methodologies and a quality system. Values reported relate only to the product tested. CannaBusiness Laboratories makes no claims as to the efficacy, safety, or other risks associated with any detected or non-detected levels of any compounds reported herein. This Certificate shall not be reproduced except in full, without the written permission of CannaBusiness Laboratories. Photo is of sample received by the lab and may vary from final packaging. The results apply to the sample as received.