

**MATERIAL:**

1. ALL COLD FORMED STEEL MATERIAL SHALL HAVE A MINIMUM FY=250 MPA.
2. ALL STRUCTURAL BOLT ARE SS304/HDG8.8 GRADE AND SHALL CONFIRM TO IS 4000 UNLESS OTHERWISE SPECIFIED
3. NUTS SHALL CONFIRM TO IS:1363 (PART-3). THE MECHANICAL PROPERTIES SHALL CONFIRM TO PROPERTY CLASS 8 (FOR BOLT OF SS304/KUN80 GRADE) AS SPECIFIED IN IS 1367 (PART-6).
4. MODULE MOUNTING BOLTS SHALL BE M8 STAINLESS STEEL SS304/KUN80.
5. YIELD STRENGTH FOR EACH MEMBER TO BE UPDATED AS PER DESIGN DOCUMENT.

**GENERAL NOTES:**

1. ALL DIMENSION ARE IN MILLIMETER UNLESS OTHERWISE SPECIFIED
2. DO NOT SCALE THE DRG. ONLY WRITTEN DIMENSIONS SHALL BE FOLLOWED.
3. ALL BOLTS SHALL BE SNUG TIGHTENED AND FULL TIGHTNESS TO BE ENSURED BY "TORQUE WRENCH METHOD".
4. FABRICATION AND ERECTION SHALL BE CARRIED OUT IN ACCORDANCE WITH IS:802.
5. BOLT SET :1 BOLT + 1 NUT + 1 SPRING WASHER + 2PLAIN WASHER.

**GALVANIZATION:**

1. STRUCTURAL MEMBERS SHALL BE GALVANIZED IN ACCORDANCE WITH IS:4759:1996
2. PRE-GALVANIZED MEMBERS SHOULD BE OF 550 / 275 GSM THICKNESS OF COATING.

**CONCRETE WORK:**

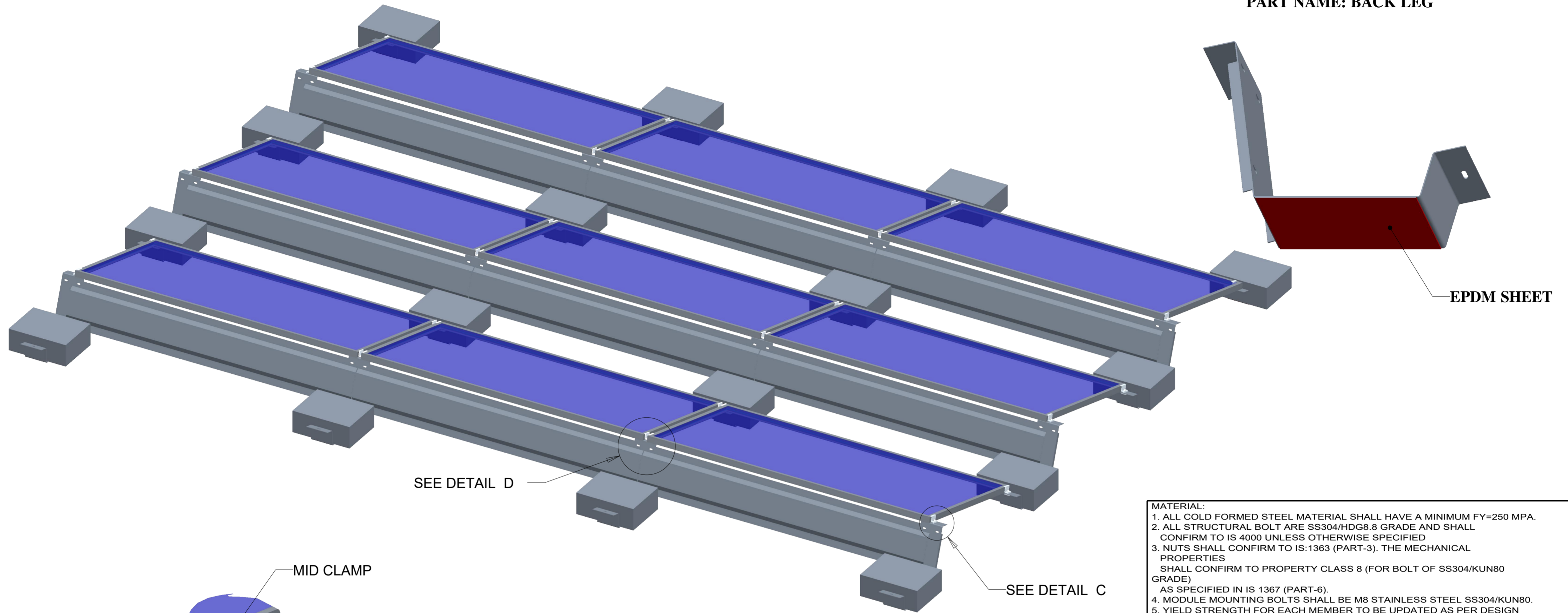
1. FOUNDATION TYPE-PILE
2. PILE FOUNDATION M20 GRADE WITH OPC 43 GRADE CEMENT SHOULD BE USED.

D:\back up e\MAYUR\CREO\STRUCTURES\DATABASE\6.RAPIDFIX\RAPIDFIX_12°_2.5THK_HDG\CREO\				TOLERANCE - (EXCEPT AS NOTED) AS PER ISO 2768-C		LINEAR DIMENSIONS		ANGULAR DIMENSIONS	
				ALL DIMENSIONS ARE IN mm.		DIMENSION	TOLERANCE	LENGTH	TOLERANCE
						0-30	± 0.2	0-10	± 1° -30'
						30-120	± 0.8	10-50	± 1'
						120-400	± 1.2	50-120	± 0.30'
						400-1000	± 2.0	120-400	± 0.15'
						1000-2000	± 3.0	400above	± 0.10'
				CLIENT:		SCALE: NTS			
				PROJECT NAME:		SHEET NO.: 01 OF 02			
				TITLE:		DRG. NO.:			
				ASSEMBLY-1					

NO.	DATE	ALTERATIONS	DRN. BY	APPRD. BY

COPYRIGHT: The Drawing/Information is Copyright and the Property of ARS Solar Tech Pvt. Ltd. It Must Not Be Copied in Whole or Part For any Purpose or Published Without the Consent of the Company.

**PART NAME: BACK LEG**



EPDM SHEET

SEE DETAIL D

SEE DETAIL C

MID CLAMP

WIND SHIELD

BACK LEG

DETAIL D  
SCALE 0.120

PANEL

END CLAMP

END CLAMP TO  
BACK LEG JOINT  
BY M8 NUT & BOLT

BACK LEG

**MATERIAL:**  
 1. ALL COLD FORMED STEEL MATERIAL SHALL HAVE A MINIMUM FY=250 MPA.  
 2. ALL STRUCTURAL BOLT ARE SS304/HDG8.8 GRADE AND SHALL CONFIRM TO IS 4000 UNLESS OTHERWISE SPECIFIED  
 3. NUTS SHALL CONFIRM TO IS:1363 (PART-3). THE MECHANICAL PROPERTIES SHALL CONFIRM TO PROPERTY CLASS 8 (FOR BOLT OF SS304/KUN80 GRADE)  
 AS SPECIFIED IN IS 1367 (PART-6).  
 4. MODULE MOUNTING BOLTS SHALL BE M8 STAINLESS STEEL SS304/KUN80.  
 5. YIELD STRENGTH FOR EACH MEMBER TO BE UPDATED AS PER DESIGN DOCUMENT.

**GENERAL NOTES:**  
 1. ALL DIMENSION ARE IN MILLIMETER UNLESS OTHERWISE SPECIFIED  
 2. DO NOT SCALE THE DRG. ONLY WRITTEN DIMENSIONS SHALL BE FOLLOWED.  
 3. ALL BOLTS SHALL BE SNUG TIGHTENED AND FULL TIGHTNESS TO BE ENSURED BY "TORQUE WRENCH METHOD".  
 4. FABRICATION AND ERECTION SHALL BE CARRIED OUT IN ACCORDANCE WITH IS:802.  
 5. BOLT SET :1 BOLT + 1 NUT + 1 SPRING WASHER + 2PLAIN WASHER.

**GALVANIZATION:**  
 1. STRUCTURAL MEMBERS SHALL BE GALVANIZED IN ACCORDANCE WITH IS:4759:1996  
 2. PRE-GALVANIZED MEMBERS SHOULD BE OF 550 / 275 GSM THICKNESS OF COATING.

**CONCRETE WORK:**  
 1. FOUNDATION TYPE-PILE  
 2. PILE FOUNDATION M20 GRADE WITH OPC 43 GRADE CEMENT SHOULD BE USED.

**DETAILS : D**

ITEM NO	PART NUMBER	QTY	DESCRIPTION	MATERIAL
1	BACK_LEG	12	SHEET_936X186X2.5THK.	PRE GALVANISED
2	ENDCLAMP	12	STD	ALUMINIUM
3	FRONT_LEG	4	SHEET_540X150X2.5THK.	PRE GALVANISED
4	M8X25MM_SHCS	24	M8X25MM	SS : 304
5	MIDCLAMP	12	STD	ALUMINIUM
6	NUT	24	M8	SS : 304
7	WIND_SHIELD	9	SHEET_295X0.5THK.	PRE GALVANISED
8	EPDM RUBBER SHEET	16	SHEET 5THK.	EPDM RUBBER

**DETAILS : C**

D:\back up e\MAYUR\CREO\STRUCTURES\ID NO.: DATABASE\6.RAPIDFIX\RAPIDFIX_12_2.5THK_HDG\CREO\				TOLERANCE - (EXCEPT AS NOTED) AS PER ISO 2768-C		LINEAR DIMENSIONS		ANGULAR DIMENSIONS	
						DIMENSION	TOLERANCE	LENGTH	TOLERANCE
						0-30	± 0.2	0-10	± 1° -30'
						30-120	± 0.8	10-50	± 1'
						120-400	± 1.2	50-120	± 0.30'
						400-1000	± 2.0	120-400	± 0.15'
						1000-2000	± 3.0	400above	± 0.10'
						ALL DIMENSIONS ARE IN mm.			
		NAME	SIGN	DATE	CLIENT:		SCALE: NTS		
DRN. BY		SRB		16.04.18	PROJECT NAME:		SHEET NO.: 02 OF 02		
CHKD. BY		MJ		16.04.18	RAPIDFIX-15°-2.5THK_ HDG		DRG. NO.:		
APPRD. BY		SSS		16.04.18	TITLE: ASSEMBLY-2				

NO.	DATE	ALTERATIONS	DRN. BY	APPRD. BY

COPYRIGHT: The Drawing Information is Copyright and the Property of ARS Solar Tech Pvt. Ltd. It Must Not Be Copied in Whole or Part for any Purpose or Released Without Prior Consent of the Company.