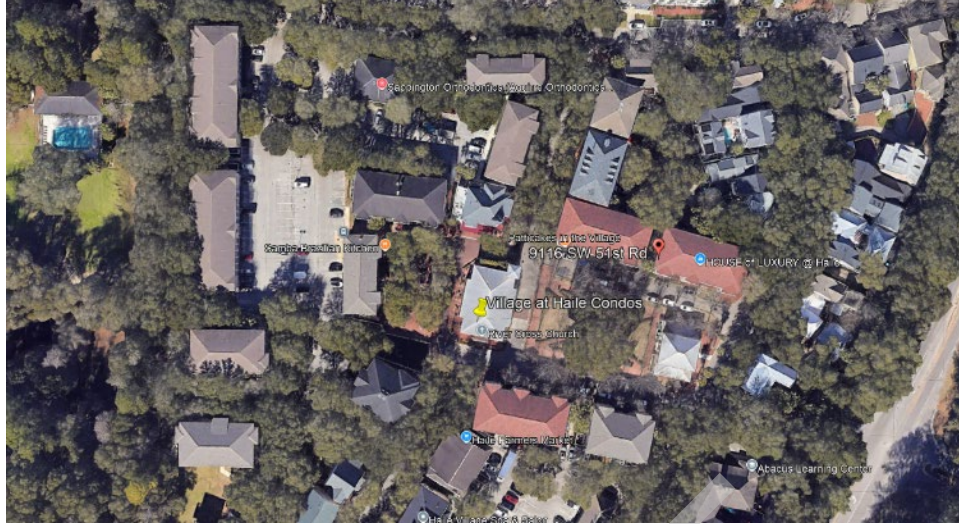


VILLAGE AT HAILE CONDOS



1. View of all buildings in the community.



2. View of the typical front elevation of the subject complex.

VILLAGE AT HAILE CONDOS



3. View of the typical rear elevation of the subject complex.



4. View of the typical side elevation of the subject complex.

VILLAGE AT HAILE CONDOS

All Buildings



5. View of typical breezeways throughout the buildings.



6. View of staining around the fascias of each building.

VILLAGE AT HAILE CONDOS



7. View of staining along the finish around the windows.



8. View of staining observed along the walls, columns, and beams of the balconies of all buildings.

VILLAGE AT HAILE CONDOS



9. View of paint delamination along the breezeway railing at each building.



10. View of cracking underneath the railing alcoves at each building.

VILLAGE AT HAILE CONDOS



11. View of cracking in the concrete topping in the stairwells.



12. View of cracks in the breezeways of the building.

VILLAGE AT HAILE CONDOS



13. View of paint delamination along the ceiling of the stairwells.

Building A



14. View of an area of Building A where stucco is unrepaired and paint delamination below.

VILLAGE AT HAILE CONDOS



15. View of paint delamination along the walls of Building A.



16. View of staining observed on the ceiling of a balcony of Building A.

VILLAGE AT HAILE CONDOS



17. View of staining and corrosion along the base of the window of Suite A-103.



18. View of corrosion observed at the base of the metal columns along the rear of Building A.

VILLAGE AT HAILE CONDOS



19. View of cracked section of beam below the Building A breezeway. The paint and stucco will need to be removed to expose the beam for Phase II.



20. View of cracked section of wall next to unit A303. The paint and stucco will need to be removed to expose the wall for Phase II.

VILLAGE AT HAILE CONDOS



21. View of paint delamination along the stairwells.



22. View of corrosion below the metal stairs.

VILLAGE AT HAILE CONDOS



23. View of horizontal cracking between windows on the second level.



24. View of horizontal cracking between the breezeway slab and the wall.

VILLAGE AT HAILE CONDOS



25. View of cracking along wall and breezeway slab flooring that extends through the floor slab.



26. View of cracking in the column next to the third level breezeway.

Building B



27. View of cracked section of wall next to unit B303. The paint and stucco will need to be removed to expose the wall for Phase II.



28. View of spalling in decorative beam below balcony above unit B101.

VILLAGE AT HAILE CONDOS



29. View of staining along the walls of the building.



30. View of spalled concrete above steel column base plate at rear elevation.

VILLAGE AT HAILE CONDOS



31. View of corrosion along edges of column in rear elevation.



32. View of corrosion under stairs in stairwell.

VILLAGE AT HAILE CONDOS



33. View of cracking along control joint and delamination along the breezeway floors.



34. View of finish cracking along column near unit B201.

VILLAGE AT HAILE CONDOS



35. View of delamination on the concrete topping along the stairs.



36. View of stair step cracking on the exterior wall.

VILLAGE AT HAILE CONDOS



37. View of cracking along the finish around the entry door to suite B-102



38. View of cracking along the interface between the window and the sill in suite B-102.

VILLAGE AT HAILE CONDOS



39. View of unrepaired walls in suite B-102.



40. View of water intrusion along a ceiling panel in suite B-103.

VILLAGE AT HAILE CONDOS



41. View of crack in the finish around a window in suite B-103.

Building C



42. View of open electrical receptical in unit C101.

VILLAGE AT HAILE CONDOS



43. View of paint bubbling along all the walls.



44. View of holes and cracks in the finish for the beams above unit C101.

VILLAGE AT HAILE CONDOS



45. View of stair-step cracks in the wall finish.



46. View of staining and cracking around the foundation of the building.

VILLAGE AT HAILE CONDOS



47. View of major staining along the first level slab.



48. View of corrosion along the stairs.

VILLAGE AT HAILE CONDOS



49. View of paint delamination along the stairs.



50. View of cracking around the control joint.

VILLAGE AT HAILE CONDOS



51. View of staining along the breezeway floor in front of unit C201.

Building D



52. View of cracked section of wall next to unit D201 balcony. The paint and stucco will need to be removed to expose the wall for Phase II.

VILLAGE AT HAILE CONDOS



53. View of cracked section along the west elevation fascia. The fascia will need to be removed to expose the trusses for Phase II.



54. View of cracked section along the exterior column near D203. The stucco will need to be removed to expose the column for Phase II.

VILLAGE AT HAILE CONDOS



55. View of crack observed in the finish of the exterior wall of suite D-102.



56. View of staining and cracking along the base of the walls around the building.

VILLAGE AT HAILE CONDOS



57. View of minor vertical crack in the wall near the window to unit D-102.



58. View of cracking and holes in the finish of the beams above unit D-103.

VILLAGE AT HAILE CONDOS



59. View of corrosion at the corners of the building.



60. View of cracking at a corner of the building.

Building E



61. View of staining under the balconies.



62. View of paint delamination along the walls around the building.

VILLAGE AT HAILE CONDOS



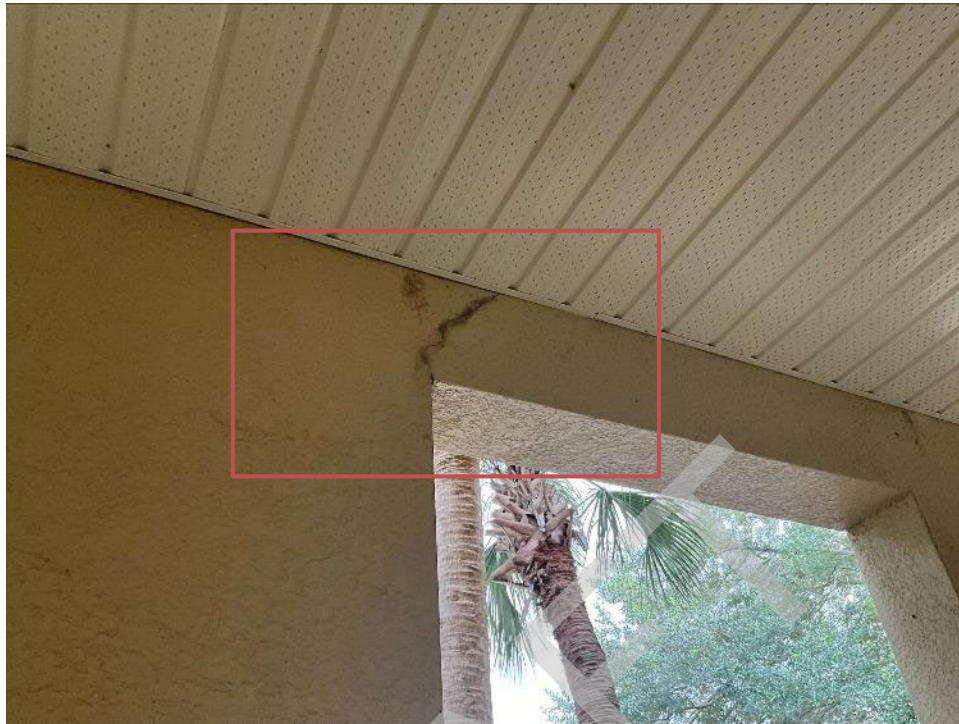
63. View of corrosion around the railing alcoves around the building.

Building F



64. **View of cracked section along the exterior column near F103. The stucco will need to be removed to expose the column for Phase II.**

VILLAGE AT HAILE CONDOS



65. View of cracked section along the wall and beam near unit F101. The stucco will need to be removed to expose the interface for Phase II.



66. View of cracked section along the wall and beam near unit F203. The stucco will need to be removed to expose the interface for Phase II.

VILLAGE AT HAILE CONDOS

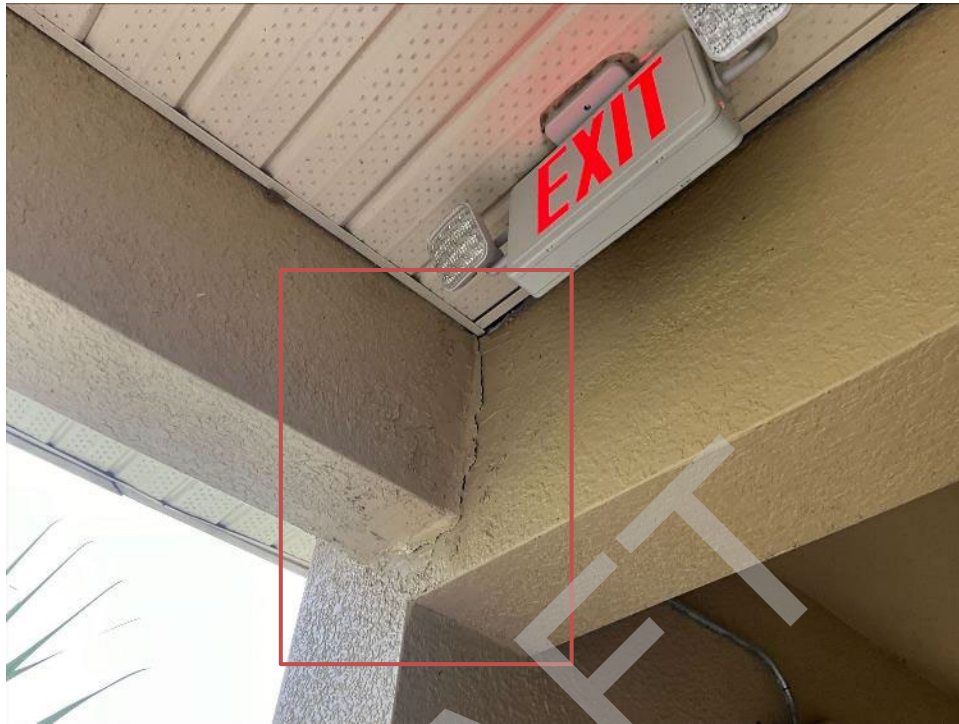


67. View of cracked section along the wall between units F201 and F202. The stucco will need to be removed to expose the column for Phase II.



68. View of cracked section along the wall and beam near unit F201. The stucco will need to be removed to expose the interface for Phase II.

VILLAGE AT HAILE CONDOS



69. View of cracked section along the beam to wall interface near unit F301. The stucco will need to be removed to expose the interface for Phase II.



70. View of an opening that is observed to be left open.

Building G



71. View of cracked section along the beam to column interface near unit G104. The stucco will need to be removed to expose the interface for Phase II.



72. View of cracked section that runs along each side of the beam to column interface near units G102 and G104. The stucco will need to be removed to expose the interface for Phase II.

VILLAGE AT HAILE CONDOS



73. View of cracked section along the bottom of the beam near units G302 and G303. The stucco will need to be removed to expose the beam for Phase II.



74. View of cracked sections along the beam and wall near unit G304. The stucco will need to be removed to expose this area for Phase II.

VILLAGE AT HAILE CONDOS



75. View of cracked section along the wall near unit G204. The stucco will need to be removed to expose the wall for Phase II.



76. View of cracked section along both sides of the beam to column interface near unit G204. The stucco will need to be removed to expose the interface for Phase II.

VILLAGE AT HAILE CONDOS



77. View of cracked section along the beam near unit G201. The stucco will need to be removed to expose the beam for Phase II.



78. View of crack in bottom of the column in front of unit G104.

VILLAGE AT HAILE CONDOS



79. View of corrosion in the corner of a column on the first level.



80. View of bulging on the front of a first level column.

VILLAGE AT HAILE CONDOS



81. View of bulging along the siding of the building.



82. View of delamination on the exterior of the building.

VILLAGE AT HAILE CONDOS



83. View of bulging along the stairs leading to unit G102.

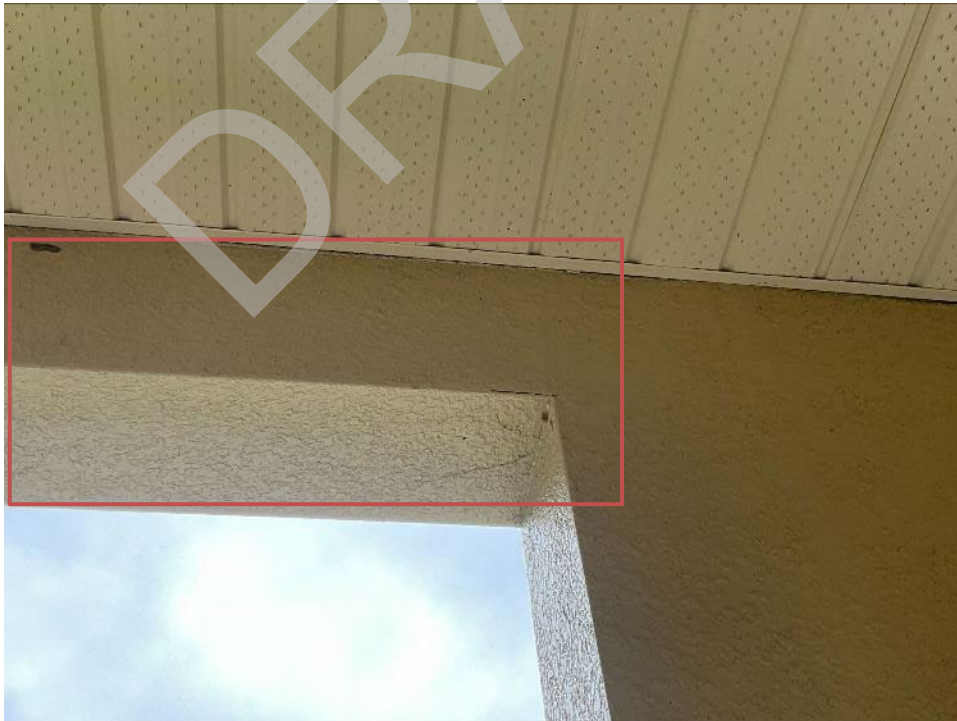


84. View of minor corrosion under the metal stairs.



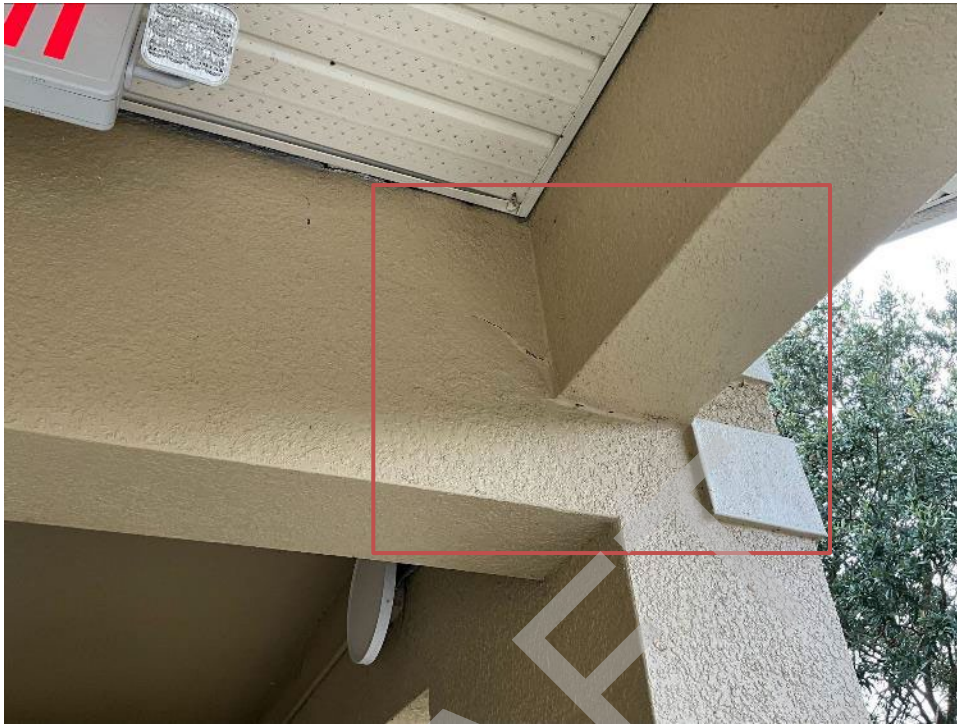
85. View of finish cracking in the beam near the stairwell.

Building H



86. View of cracked section along the beam near unit H102. Cracks are observed along all faces of the beam. The stucco will need to be removed to expose the beam for Phase II.

VILLAGE AT HAILE CONDOS



87. View of cracked section along the beam to beam interface near unit H301. The stucco will need to be removed to expose the interface for Phase II.



88. View of cracked section along the beam near unit H201. The stucco will need to be removed to expose the beam for Phase II.

VILLAGE AT HAILE CONDOS



89. View of a crack in the balcony of unit H201.



90. View of unrepaired column section unit H104.

VILLAGE AT HAILE CONDOS



91. View of missing section of stucco at the bottom of a column near unit H104.



92. View of spalled concrete column near unit H103.

VILLAGE AT HAILE CONDOS



93. View of missing section of bottom of column in balcony near unit H201.



94. View of spalled section of concrete stairs.

VILLAGE AT HAILE CONDOS



95. View of bulging in siding along the rear elevation.



96. View of spalled section and minor bulging along the concrete stairs of unit H104.

VILLAGE AT HAILE CONDOS



97. View of spalling at the corner of the building.



98. View of bubbling in the paint in the column near unit H304.

VILLAGE AT HAILE CONDOS



99. View of cracks in the interface of the column top and the column.



100. View of finish cracking in the beam near the stairwell and unit H301.

VILLAGE AT HAILE CONDOS



101. View of finish cracking in the column near the stairwell and unit H201.

Building I



102. View of stair-step cracking observed in multiple walls around the building.

VILLAGE AT HAILE CONDOS



103. View of vertical cracking in base of walls.



104. View of staining along a ventilation stack.

Building J



105. **View of cracked section on both sides of the beam to wall interface near unit J201. The stucco will need to be removed to expose the interface for Phase II.**



106. **View of section observed with bulging and cracking along the first level beam along the rear elevation. The stucco will need to be removed to expose the interface for Phase II.**

VILLAGE AT HAILE CONDOS



107. View of bulging siding observed around the building.



108. View of cracking in the base of the walls.

VILLAGE AT HAILE CONDOS



109. View of crack running from the corner of the window to the bottom of the wall.



110. View of stair-step crack in the wall near the window.

VILLAGE AT HAILE CONDOS



111. View of vertical cracking observed around the base of the wall.



112. View of cracking in the stucco in front of the bottom slab.

VILLAGE AT HAILE CONDOS



113. View of repaired slab.



114. View of corroded edge of wall base.

VILLAGE AT HAILE CONDOS



115. View of cracked wall behind AC stand.



116. View of stair-step cracks along north wall.

VILLAGE AT HAILE CONDOS



117. View of crack in the edge of the second level breezeway floor.

Building K



118. View of paint bubbling and finish cracks in multiple areas around the building.

VILLAGE AT HAILE CONDOS



119. View of stair-step crack observed in multiple areas around the building.



120. View of bulging under the siding around the building.



121. View of missing area in the fascia with vegetation growth located on the west side of the roof. The fascia will need to be removed to expose the trusses for Phase II.

Building L



122. View of missing soffit material at the roof of a balcony on the west elevation.

VILLAGE AT HAILE CONDOS



123. View of horizontal crack at the base of the wall next to the opening on the west elevation.



124. View of cracking under a window-sill.

VILLAGE AT HAILE CONDOS



125. View of hole dug out under the building.



126. View of missing piece of the finish on the fascia along the east elevation.

VILLAGE AT HAILE CONDOS



127. View of crack in the finish along the interior breezeway.

Utilities

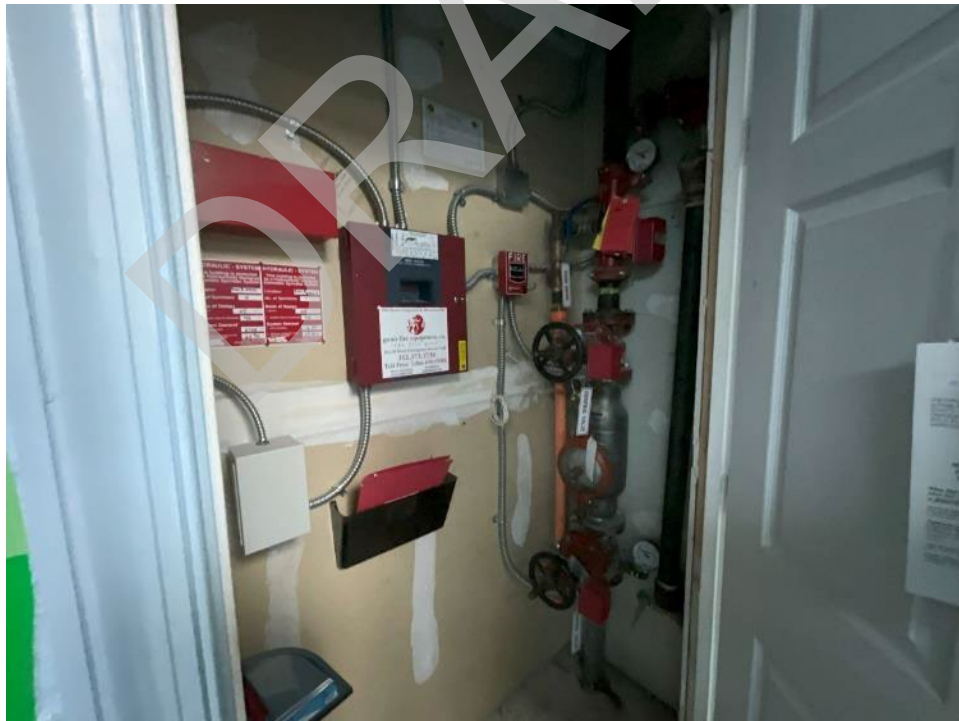


128. View of typical electrical meters.

VILLAGE AT HAILE CONDOS



129. View of typical sprinklers through out the buildings.

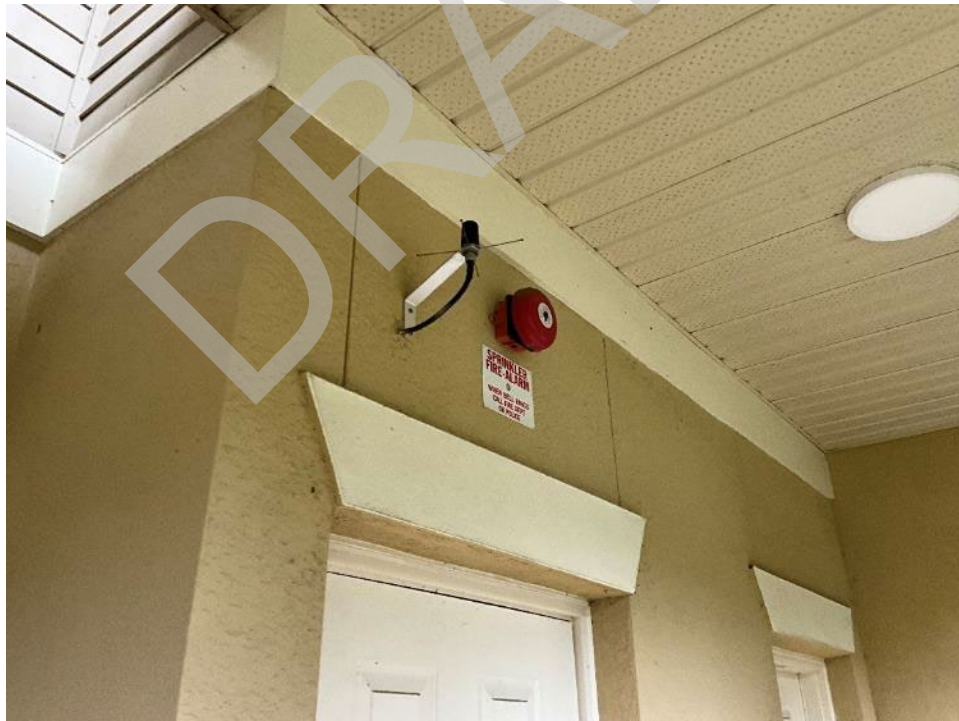


130. View of typical fire alarm control panel.

VILLAGE AT HAILE CONDOS



131. View of typical fire equipment around the community.



132. View of fire equipment around the community.