

EST. 1991



# PRISTINE HOMES

*Residential | Commercial | Group Housing*

Developer | Builder | Contractor | Collaborator



## D - 109

## RAMPRASTHA



## Plot Features.....

- Plot Size 226 Sq yd (30' x 68')
- Facing 30' wide road
- Plot Facing EAST and PARK facing
- Each floor with 4 Bedrooms with 3 attached bathrooms and 1 Powder Room
- Designing by leading architecture and interior designing firm
- Vaastu compliant floor plan
- Possession by July 2024



## General Features.....

- Passenger lift of brand OTIS (Stainless Steel)
- Lift access on the terrace & basement also
- Imported Marble flooring in all bedrooms and living room (Rs. 300>350 FOR)
- Top quality Granite for Staircase and Balconies (Rs. 125>175 FOR)
- Designer POP ceiling
- 32MM thick flush doors with 4MM Natural Veneer on both sides
- Ivory Coast Teak Frames of 6" x 2.5" for all internal doors and windows
- Separate video door intercom for each floor of brand Hawk-Vision (or equivalent)
- Designer SS Railing in Staircase



# Elevation.....

- Modern classic elevation inspired by top architecture designs worldwide
- TOSTEM aluminum sliding doors and windows
- Designer LED wall lights
- Imported Granite work on ramp and parking area
- Modern & Contemporary Design Railing Balcony
- Contemporary Design CNC ceilings in Balcony
- Designer MS gates as per elevation design

EST. 1991



**PRISTINE HOMES**

# FRONT ELEVATION



\*Elevation may vary as per actual structure



EST. 1991



**PRISTINE HOMES**

# LEFT SIDE ELEVATION



\*Elevation may vary as per actual structure

EST. 1991



**PRISTINE HOMES**

# RIGHT SIDE ELEVATION



\*Elevation may vary as per actual structure



**PRISTINE HOMES**

## Dining & Living.....

- Lobby fitted with TV Cabinet
- Wall highlights in living area
- Electronic biometric lock on main door by brand Hawk Vision (or equivalent)
- Copper Piping and Provisions for 2 split AC's

## Bedrooms.....

- Modular Wardrobes and Coordinated TV Cabinet of ply-board and sun mica/PVC sheet/acrylic sheet
- Wardrobe fittings (telescopic channels and hinges) of brand Enoxi/Peacock
- TOSTEM aluminum sliding Doors and Windows
- Copper Piping & Provision made for split AC





## Bathrooms.....

- 25 Lts Geysers pre-fitted of brand Jaquar (or equivalent)
- Sanitary by brand Jaquar
- Faucets by brand Jaquar
- Overhead Shower of 12” in all bathrooms
- Designer Vanity in Bathrooms
- Modern wall mirrors
- Exhaust fans of brand Havells (or equivalent)
- GVT/PGVT wall-tiles (Ranging Rs. 80>100)
- PVC drainage pipes of brand Prince
- CPVC pipes of brand Prince
- Electronic smart toilet seat for powder room by brand Mozio



## Kitchen.....

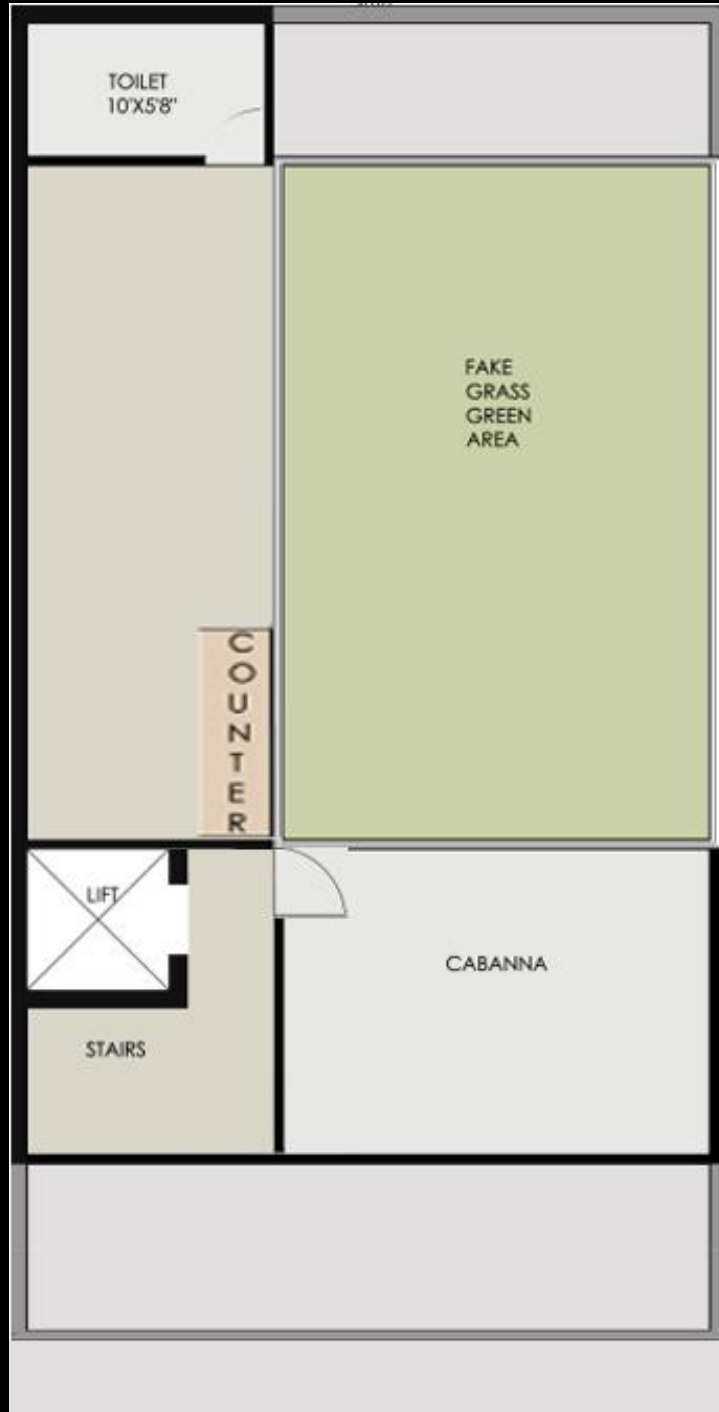
- Modular with Hafele hinges & channels
- Pre-fitted 3 lts Geyser of brand Jaquar (or equivalent)
- Pre-fitted hob of brand Kaff (or equivalent)
- Pre-fitted Chimney of brand Kaff (or equivalent)
- Imported Granite top counter

## Terrace.....

- Direct lift access
- Separate bathroom
- Anti-skid Vitrified Tiles flooring
- Pre-Installed Cabana seating area (Optional)
- Separate Granite Counter (Optional)
- Terrace garden (Optional)



# TERRACE PLAN



\*Terrace Plan may vary as per actual structure



## Electrical Works.....

- Ceiling lights of brand Panasonic (or equivalent)
- Wiring of brand Havells ( or equivalent)
- MCBs of brand Havells (or equivalent)
- Switches of brand Anchor by Panasonic (or equivalent)
- Fans by brand Havells (or equivalent)
- Air Conditioner Copper Piping and Provisions

## Other features.....

- Separate submersible pump for the plot
- IGL gas pipeline available
- Corporation water supply available
- Space for drying clothes in both rear and front
- Common electricity meter for common services
- MS jaal at the rear
- Invertor wiring provided in each floor
- And much more.....



# TYPICAL FLOOR PLAN



EST. 1991

## PRISTINE HOMES



\*Floor Plan may vary as per actual structure

EST. 1991



PRISTINE HOMES

H.O.M.E

HAPPINESS

OWNERSHIP

MEMORIES

EVERYTHING

@

D-109, Ramprastha,  
Ghaziabad, UP 201011