



MR-GLASS

DOORS & WINDOWS

MANUFACTURING LLC.

Ph. 954-444-3374

Email Joe@renewmyplace.com



In cooperation with

SCHÜCO



WHERE QUALITY MATTERS

Mr-Glass Doors & Windows is a company with 30 years of combined experience. Through our experience, we have learned that the best opportunity for growth, as a leading company, lies in the use of first-rate products, superior service and customer satisfaction. Our goal consists of responding and providing service in a timely and courteous manner.

We take pride in the distinct of quality of our craftsmanship and use only the best materials in the fabrication of our products. Our commitment is to our clients, products and services. Through meticulous work and first-rate quality products, we manage to ensure our customers of our standing as an insuperable manufacturing company.

The Miami city skyline and luxury housing development in the region are craving a high end, sophisticated product. Therefore, we have started a strategic alliance with Schüco USA LLLP. Headquartered in Germany and operating in more than 80 countries worldwide, the company has 5,400 employees and a network of 12,000 partners. Schüco is one of the world's leaders in terms of innovative aluminum windows, door and facade solutions.

The alliance with Schüco will allow Mr-Glass to introduce clients to a sophisticated product that meets the highest requirements in terms of design, comfort, security and energy efficiency.







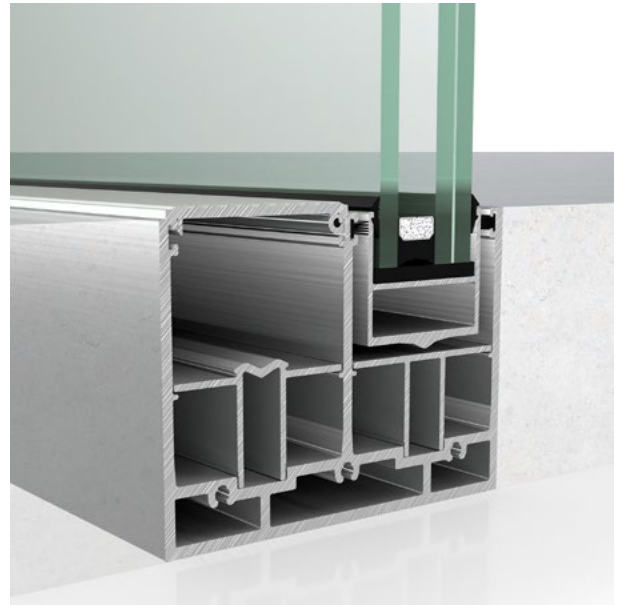
IMPACT SLIDING DOOR

SCHÜCO SLIDING SYSTEM ASS 39 PD

An exceptional, highly transparent sliding system solution with floor-to-ceiling glazing for areas without thermal insulation requirements.

The Schüco Sliding System ASS 39 PD impresses with its clear design thanks to concealed operation in the interlocking section or by means of an elegant, continuous pull grip.

A new locking point and optional locking feature for the system from the inside and outside ensure a high level of security and comfort.



FOR MAXIMUM FREEDOM

Thanks to narrow face widths and a concealed outer frame, the Panorama Design system ensures maximum transparency and light penetration.

WITH MINIMAL FACE WIDTHS

The Panorama Design system stands out with its narrow face widths from just 1-9/16" (39mm) in the interlock section.

FLEXIBLE VENT DESIGN

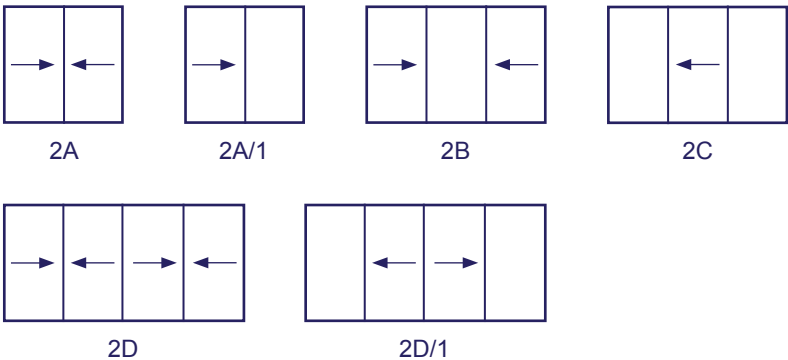
Unit heights of up to 12' (3650mm) provide a variety of designs for an attractive living environment.



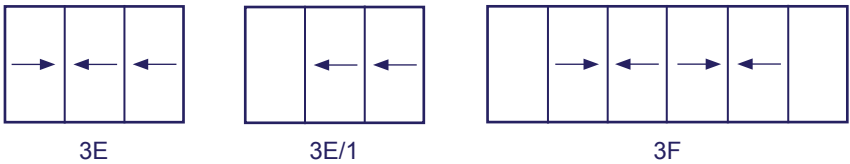
TESTING OVERVIEW

CONFIGURATIONS

DOUBLE TRACK



TRIPLE TRACK



PERFORMANCE

Maximum Vent Dimension Maximum Overall Dimension	5' x 12' (1500mm x 3650mm) Up to 30' x 12' (9100mm x 3650mm)
Glass Thickness	Vent frame 461 070: 1-3/16" Insulated Laminated Glass Vent frame 461 050: 9/16" Laminated Glass
Maximum Weight	Up to 661 lb (300kg)
Wind Load	+63/ -70 psf for vents at 4' x 12' (1200mm x 3650mm) +60/ -60 psf for vents at 5' x 12' (1500mm x 3650mm)
Hardware	Sliding, pull handle and retaining catch handle
Thermal Performance*	Overall U Value 0.52 Btu/hr-ft ² /-°F SHGC Value 0.24

*with Solarban 70 on #2 at standard NFRC size / NFRC values can slightly change if the sill, head, or jambs are buried.





IMPACT WINDOW

SCHÜCO WINDOW SYSTEM AWS 65

The concept of the continuous center gasket with Schüco SimplySmart is a tried-and-tested solution for an operable tilt and turn or inward opening casement window. Markets with only average thermal insulation requirements can benefit from this technology.

The system, which consists of a newly designed center gasket contour made from fabrication-friendly micro cellular rubber and a corner seal, offers an intelligent combination of several functions – self-positioning of the center gasket, sealing of the miter cut on the profile, and sealant control for optimum sealing of the corner area.

The Schüco Window AWS 65 is also available as fixed window, possibly outward casement.



STANDARD SYSTEM

The standard aluminum window system for international requirements has a face width of 2-9/16" (65mm).

SIMPLYSMART TECHNOLOGY

The innovations in Schüco AWS SimplySmart technology are characterized by efficient planning, fault-tolerant production and installation, and the optimization of energy efficiency and sustainability.

VARIOUS OPENING TYPES

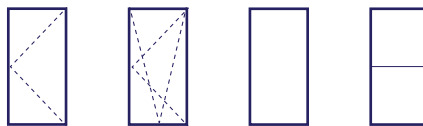
Whether you choose a fixed, inward tilt turn or casement, the options are more flexible than ever before.



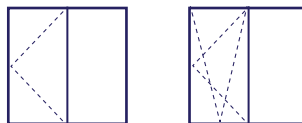
TESTING OVERVIEW

CONFIGURATIONS

CASEMENT, INWARD TILT
AND TURN, FIXED, FIXED
WITH TRANSOM



TILT AND TURN/ FIXED,
CASEMENT/ FIXED



TILT AND TURN/ FIXED/
TILT AND TURN



PERFORMANCE

Dimensions	Inward Casement + Tilt and Turn: 4' x 6' (1200mm x 1800mm) Outward Casement: 3'-6" x 7" (1000mm x 2100mm) Fixed: 5' x 12' (1500mm x 3600mm)	
Maximum Weight	Up to 287 lb (130 kg)	
Wind Load	+/- 70 psf	
AAMA Rating	AW-PG 70 for tilt and turn, inward opening casement	
Hardware	Concealed hinge	
Accessories	Limiting restrictor	
Thermal Performance*	Fixed Overall U Value: 0.33 Btu/hr-ft ² /-°F SHGC Value: 0.23	Tilt and Turn Overall U Value: 0.36 Btu/hr-ft ² /-°F SHGC Value: 0.20

*with Solarban 70 on #2 at standard NFRC size.

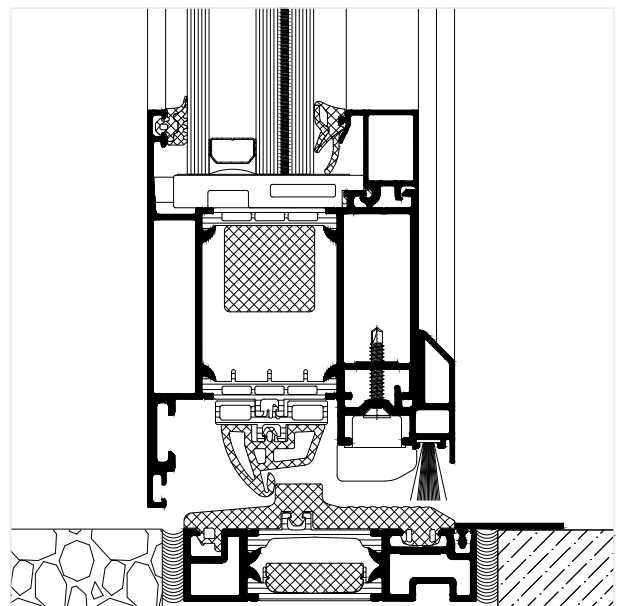
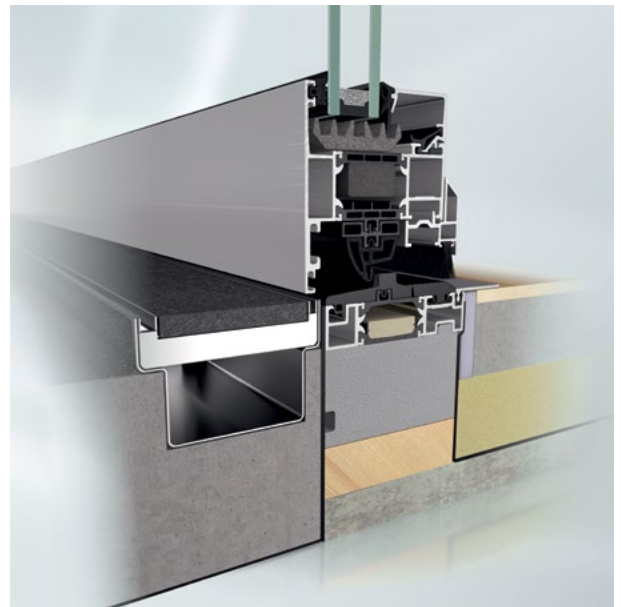


IMPACT TERRACE DOOR

SCHÜCO TERRACE DOOR SYSTEM AWS 75.SI+

The Schüco AWS 75.SI+ outward opening terrace door consist of an easy-access threshold option which meets ADA 1/2" (13mm) threshold height limitation while maintaining a 15 psf water resistance test performance. Using the Group V vent profile increases the maximum overall size to 4' x 8-1/3" (1200mm x 2500mm) and the maximum weight to 286 lb (130 kg) with 90° opening.

The system allows insulated glass units of 1-5/16" (33mm) thick, thus meeting today's rigorous energy saving demands. By burying the 13/16" (20mm) threshold into the floor, a smooth and easy ADA compliant access to the exterior is provided.



TESTING OVERVIEW

CONFIGURATIONS

SINGLE VENT,
OUTWARD ADA TERRACE DOOR



DOUBLE VENT,
OUTWARD ADA TERRACE DOOR*



*to be tested in 2019

PERFORMANCE

Dimensions	4' x 8'-4" (1200mm X 2500mm)
Maximum Weight	Up to 287 lb (130 kg)
Wind Load	+/- 70 psf
AAMA Rating	AW-PG 70
Hardware	Exposed barrel hinge
Accessories	Dorma door closer
Thermal Performance*	Overall U Value: 0.35 Btu/hr-ft2/-°F SHGC Value: 0.18

*with Solarban 70 on #2 at standard NFRC size.



Ph. 954-444-3374

Email Joe@renewmyplace.com