

h<sup>2.0</sup>



**NEXGEN**  
Ergonomics

LESS = MORE





h<sup>2.0</sup>

### NEW SIT AND PLAY OFFICE CHAIR

Designed by the world renowned ITO Designs, HU2.0 wComposed entirely of flowing shapes that interact with each other, HU2.0 incorporates a self-balancing system which is directly integrated into the core structure of the chair, resulting in a seamless design without any visible mechanical parts.







**h**2.0

## DYNAMICS

Lightweight to provide the feeling of home in the workplace drives the HU2.0 series design. Abandon a large number of complex shapes and run through the overall product design with concise lines, which is more suitable for matching simple office space and colorful home space. For the first time, the HU2.0 series eliminated the traditional complex structural design and promoted the function of the overall structure with the principle of material deformation techniques to reduce materials and lines.

It reduces the burden of material recycling, yet promotes that the overall design is lightweight, organic, and fluid.

h<sup>2.0</sup>





h<sup>2.0</sup>



h2o





h<sup>2.0</sup>



h<sup>2</sup>.o





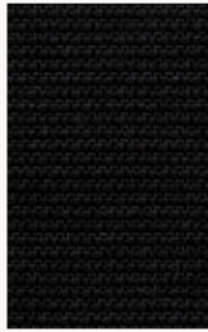


*Chocolate*

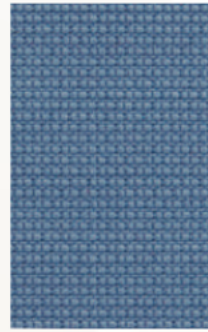
*Vanilla*



HY-6801B  
Grey



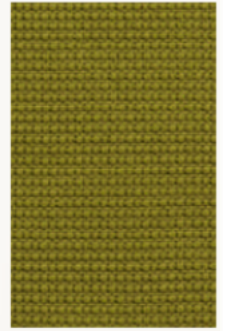
HY-6804B  
Black



HY-6836B  
Grayish Blue



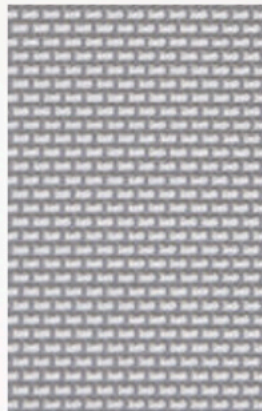
HY-6826B  
Red



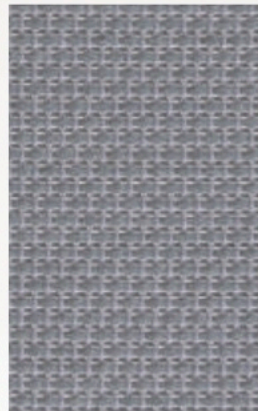
HY-6858B  
Grass Green

**STANDARD  
SEAT UPHOLSTERY  
COLORS**

**STANDARD  
BACK MESH  
COLORS**



YN80-17C  
White

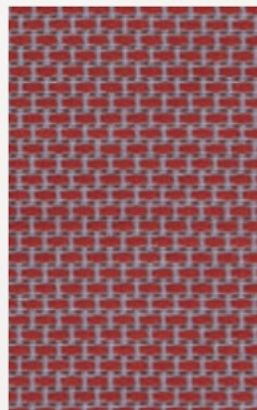


YN80-10C-5  
Grey



YN80-11C  
Black

**h<sub>2</sub>O**  
**WHAT'S  
YOUR  
FLAVOR  
FAVE?**

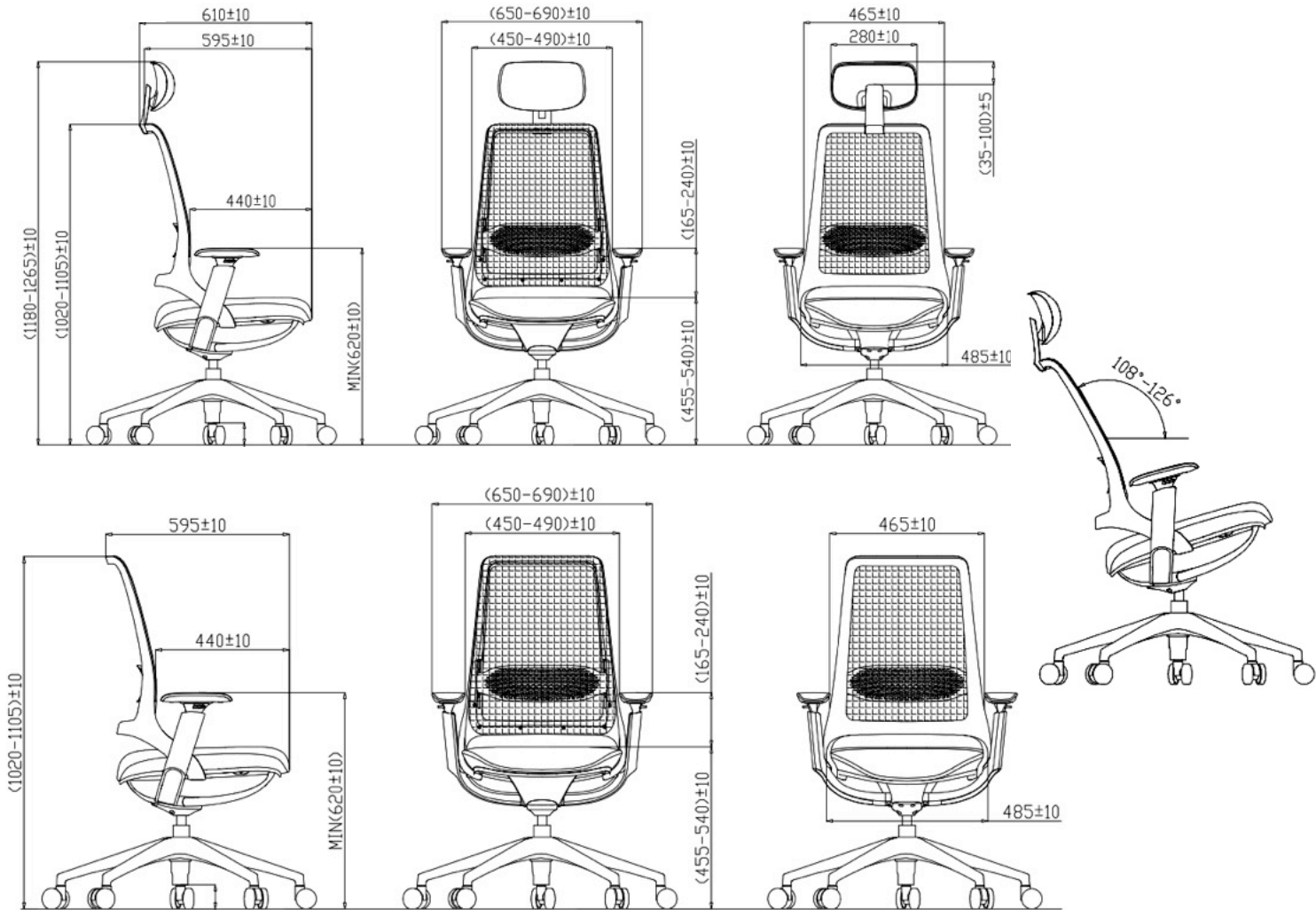


YN80-12C-3  
Red



YN80-15C-7  
Blue





## Shipping

20 Foot Standard 87 Chairs  
40 Foot HQ 229 Chairs



[www.axessoem.com](http://www.axessoem.com)



4641 Stag Thicket Ln.  
Brunswick, Ohio 44212 (USA)

T: +1 (330) 460-4840

[general@axess-int.com](mailto:general@axess-int.com)

