





DESIGN DYNAMICS

The most prominent feature of the eLARK series is the "Y" inner frame that is made of super-tough nylon material, which can achieve a certain degree of back frame twist. The inner frame is designed according to the distribution of the shoulders and spine of the human body.

The back frame provides effective support when the human body is lowered. The support is reactive, elastic and flexible enhancing support for the spine. The entire back frame twists with the human body. The design boldly subverts the traditional concept of mesh chairs.







BIFMA X5.1





Adjustable Headrest
(Optional)

Fiberglass Reinforced Ultra Tough
'Y' Frame With Lateral Twist Motion
For The Back And Shoulders

Semi Translucent Breathable
Back Mesh in Various Colors

4 Way Multi-Flex
Lumbar Support

3 Way
Adjustable Arms

Sleek Concealed
Adjustment controls

Advanced Weight
Activated Synchro
Tilt Mechanism
With Seat Slider

Class 4
Pneumatic
Cylinder

Multi-Surface
Soft Noiseless
Casters





Chocolate

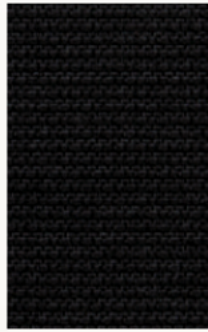


Vanilla

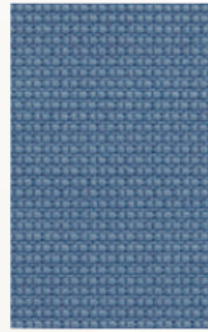




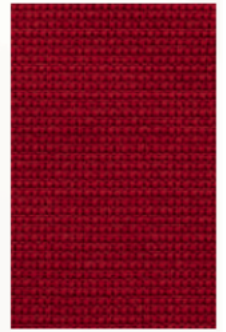
HY-6801B
Grey



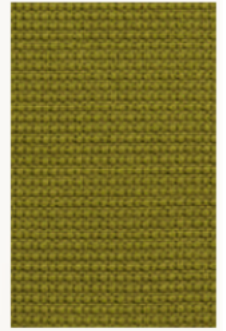
HY-6804B
Black



HY-6836B
Grayish Blue



HY-6826B
Red



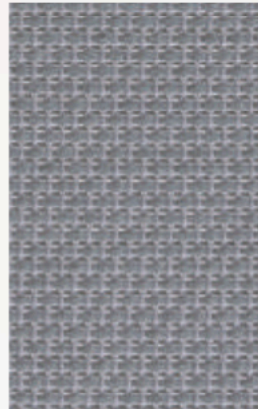
HY-6858B
Grass Green

**STANDARD
SEAT UPHOLSTERY
COLORS**

**STANDARD
BACK MESH
COLORS**



YN80-17C
White



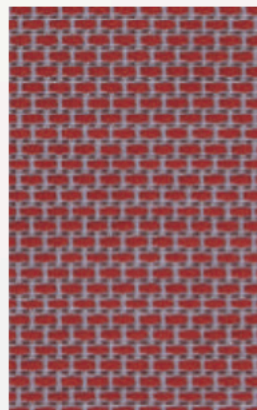
YN80-10C-5
Grey



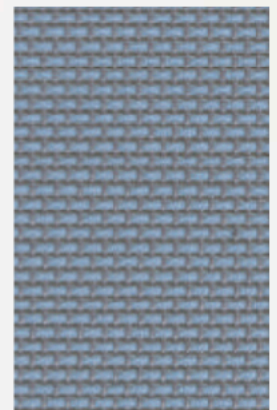
YN80-11C
Black



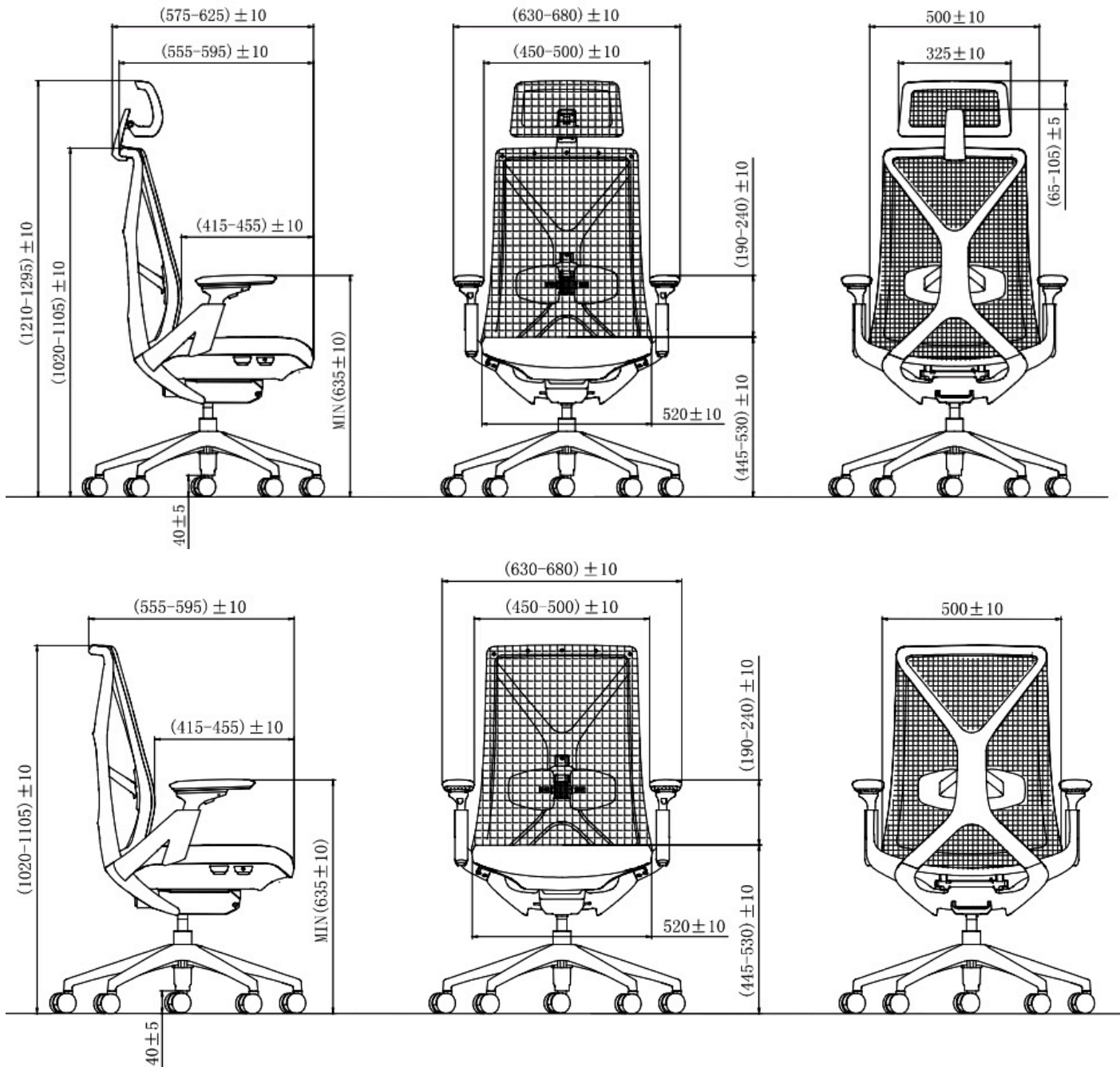
**WHAT'S
YOUR
FLAVOR
FAVE?**



YN80-12C-3
Red



YN80-15C-7
Blue



Shipping

20 Foot Standard 125 Chairs
40 Foot HQ 330 Chairs



www.axessoem.com



4641 Stag Thicket Ln.
Brunswick, Ohio 44212 (USA)
T: +1 (330) 460-4840
general@axess-int.com

