

andes



COMFORT

QUALITY

VALUE



andes

THE SUPPORT WORKERS
NEED. THE VERSATILITY
COMPANIES **DESIRE.**



**Hybrid Back
Headrest & Coat Hanger**



**Hybrid Back
Headrest**



Hybrid Back

Designed with support in mind

Comfort and support are key deciding elements when choosing a task chair. Designed for those who log many hours at their desks, Andes provides the adjustability and support today's workers require.

Generously proportioned seat cushion, proper lumbar support, arm adjustability, proper seat height, and a balance synchro-tilt mechanisms that conforms perfectly to a range of body types which also provides back tension automatically based on the user weight.

ANDES is also highly versatile. An optional headrest with or without a coat hanger, it's the task chair that goes from the reception desk, to the conference room and the executive office.

andes



Features

- Hybrid (Mid ~ High) Back
- Fabric Seat With Mesh Back
- Contract High Density Molded Foam
- Adjustable Height Adjustment (Class 3) Pneumatic Lift.
- Height Adjustable Arms
- No Arm Option Also Available
- Synchro Tilt Mechanism, With 3 Position Tilt Lock
- Height Adjustable Lumbar Support
- Optional Headrest With Or Without Coat Hanger
- Black Nylon Base With Dual Wheel Castors

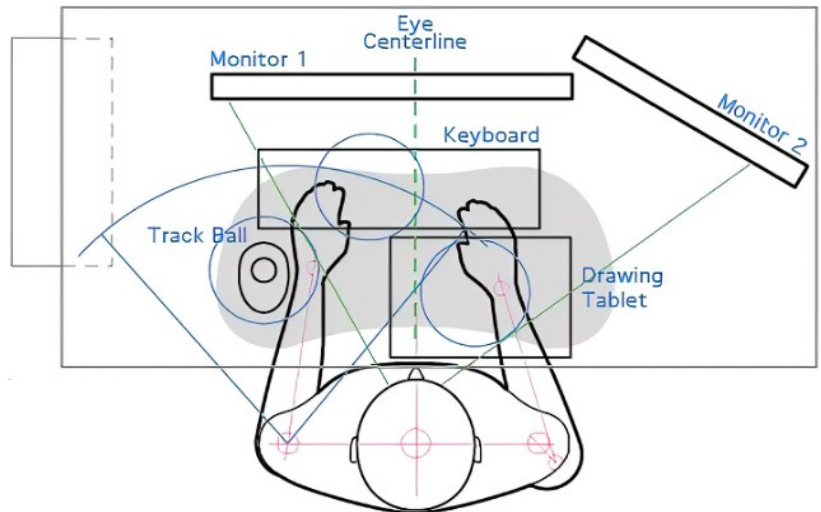
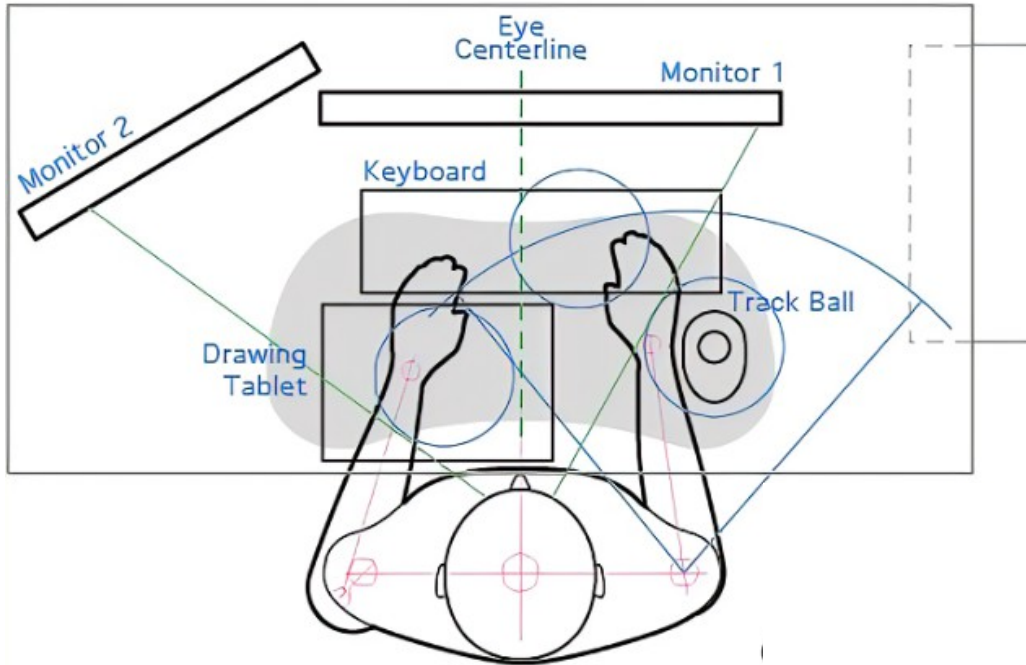
er·go·nom·ics

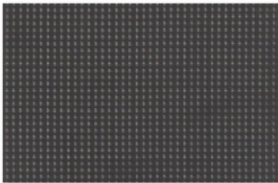
[ərgə'nāmiks]

NOUN

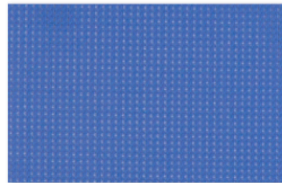
the study of people's efficiency in their working environment.

andes





Black



Blue



Grey



Red

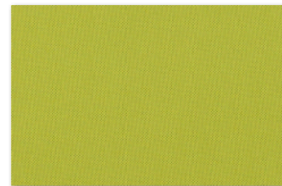
MESH BACK COLOR SELECTION



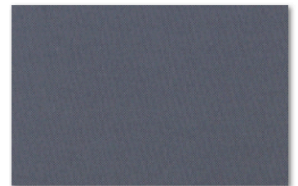
Black



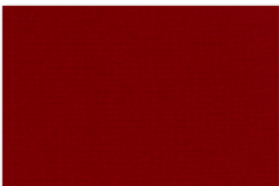
Blue



Green



Grey



Red

FABRIC SELECTION



andes

COMFORT | QUALITY | VALUE

Shipping

40 Foot HQ		550 Chairs
40 Foot		462 Chairs
20 Foot		231 Chairs

Weight

Net Weight:	17.8 Kgs.
Gross Weight:	20.3 Kgs.
Carton Size:	74 x 28 x 54 cm



www.axessoem.com



4641 Stag Thicket Ln.
Brunswick, Ohio 44212 (USA)
T: +1 (330) 460-4840
general@axess-int.com