





### **MULTIPLE LEARNING MODES**

Thesis 2.0 is flexible, mobile, and configurable that could be arranged and used wherever needed to create a diversified, interactive environments.

### **FLUID**

Designed not only for the modern 21st Century learning environments, The Thesis 2.0 seating can be used in every area to promote communications, creativity, and teaming environment. It's vibrant colors and features makes Thesis 2.0 use multi-functional and multi-disciplined.





## WE'VE GOT THE LOOK !!

Thesis 2.0 is simple yet stylish. Providing a modern & organic beauty with unparalleled durability. Thesis can be ordered in cushioned & upholstered seat or without the cushion. Select from four seat shell colors and two upholstered cushioned colors. Mix and match freely to meet your environment and aesthetic needs

**Build It**  
**YOURWAY**







### FEATURES & OPTIONS

- Fiber Glass Reinforced Poly Shell
- Integrated Panel Flare Arms (Standard)
- Flexible Contoured Back
- Optional Upholstered / Cushioned Seat
- Multi-Directional Tablet Arm (Left or Right)
- Optional Drink Holder (Standard)
- Mobile Storage Base
- Four Standard Poly Colors
- Two Standard Fabric Upholstery Colors



360° rotating

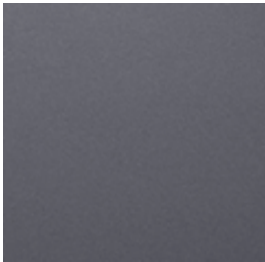


68kg bearing



55cm tablet

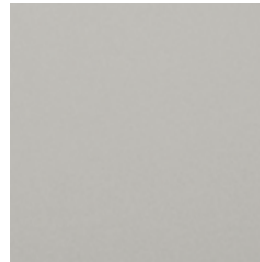




Blue Grey



Green

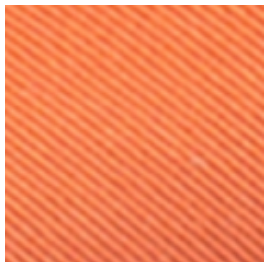


Grey

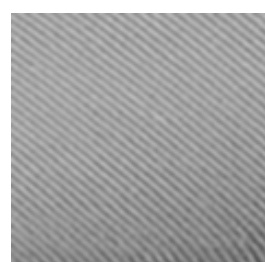


Orange

## UPHOLSTERY



Orange



Grey

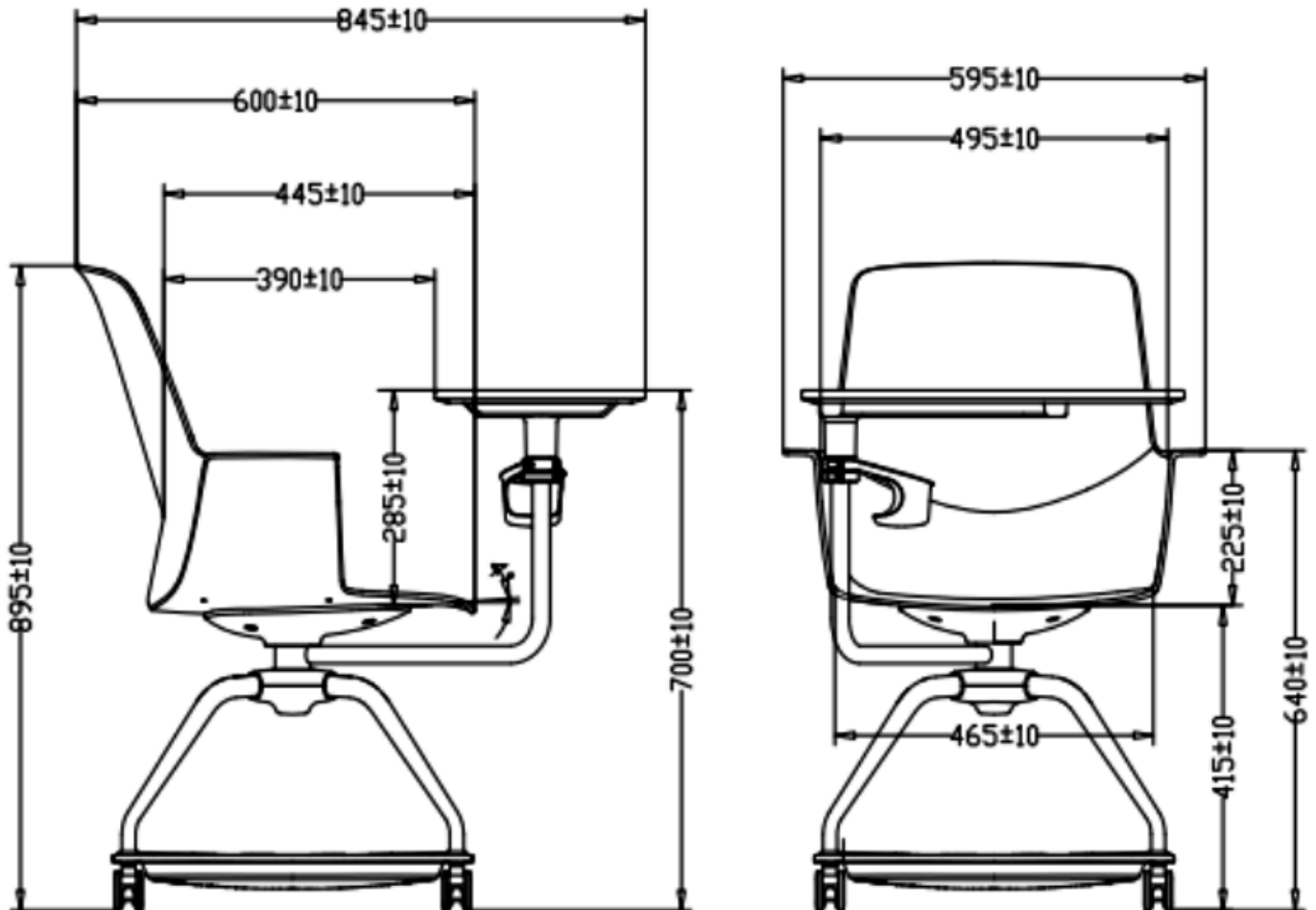
## STORAGE BASE COLORS



Gun Metal Black



## Dimensions



### Shipping

20 Foot Standard 126 Chairs  
 40 Foot Standard 252 Chairs  
 40 Foot HQ 300 Chairs





[www.axessoem.com](http://www.axessoem.com)



4641 Stag Thicket Ln.  
Brunswick, Ohio 44212 (USA)

T: +1 (330) 460-4840

| [general@axess-int.com](mailto:general@axess-int.com)