



... Be Our Guest



I can be used **EVERYWHERE**

Designed to withstand the high demands of our modern spaces, Allround Guest chair is durable and reliable while providing the comfort your team & your guests deserve.

A sturdy stack chair with a weighted base and contoured rear feet that give it a grounded stability with an Elegant, slim silhouette makes all-round Guest versatile to be used in both contract office and healthcare environments.



BIFMA X5.1





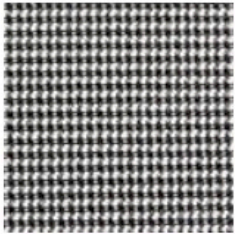
FEATURES

- Upholstered Cushioned Seat Using Contract Grade High Density Foam
- Mesh Back (8) Colors to Select From
- Black Poly Arms -or- Optional Polished Aluminum Arm Caps
- Weighted Base and Contoured Rear Feet
- Black - or - Grey Powder-Coated Legs With Polished Aluminum Detail
- Anti-Tip Rear Legs
- Stackable Up to 3 Chairs
- 300 Lbs. Weight Rating
- Meets & Exceeds ANSI / BIFMA Standards
- Green Guard Gold Certified
- Ships 2 per Carton

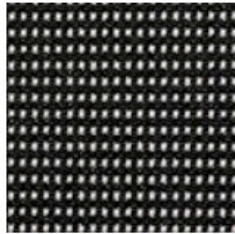
... Be Our Guest



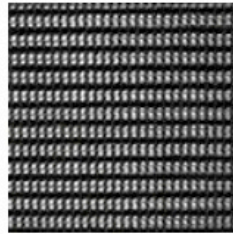
BEAUTY | **F**UNCTION | **V**ALUE



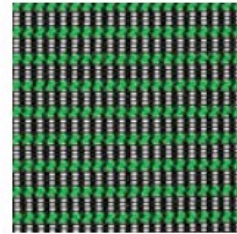
FB-0203



FB-0201



FB-0101



FB-0105



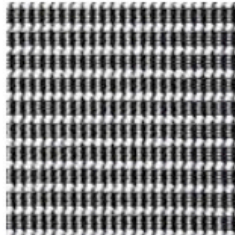
FB-0103



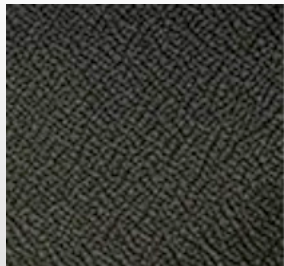
FB-0102



FB-0106



FB-0104



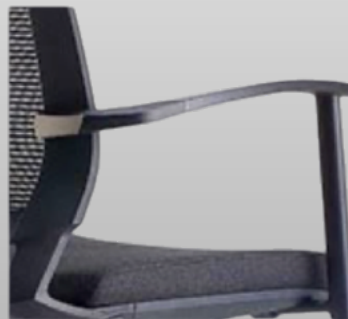
FC-0101
Textured Black



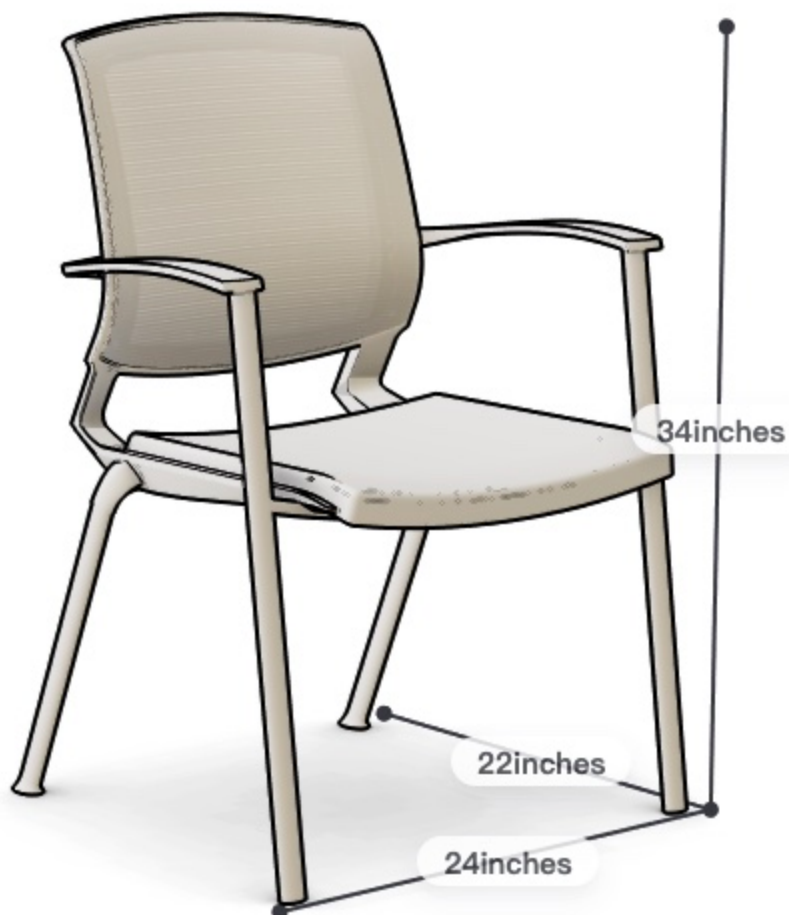
FC-0201
Smooth Black



Polished Aluminum Arms
Grey Frame



Black Poly Arms
Black Frame



Shipping

20 Foot		116 Chairs
40 Foot		248 Chairs
40 Foot HQ		272 Chairs

Weight

Net Weight:	22 Kgs.
Gross Weight:	27 Kgs.



www.axessoem.com



4641 Stag Thicket Ln.
Brunswick, Ohio 44212 (USA)
T: +1 (330) 460-4840
general@axess-int.com