



Designed By:
HANS THYGE & CO

**The Ergonomics You Don't
Know About**





The **COMFORT** chair is designed in pure Scandinavian style which combines aesthetics and functionality. The backrest comes in 2 parts so that the lumbar support could be height adjusted according to different body types to provide customized support and comfort. This innovative system offers firm support to the users lower back that promotes the correct posture while at work and to reduce the fatigue from sitting stationary throughout the day. When you get tired of sitting, lean back and enjoy its superb comfort, balance and support.



31

Lumbar support
engineering experiments

12

Prototypes

99

Structural Tests

FOR THE ULTIMATE SITTING EXPERIENCE



Features

- Executive Mid-Back
- Upholstered Seat (Black Or Grey Fabric)
- Mesh Back In Black or Gray
- F20 Synchro Tilt Auto Mechanism
- Weight Sensing Mechanism
- Seat Slider
- Height Adjustable Upper Back
- Automatic Synchro tilt mechanism
- 4-Position Tilt Lock
- 3-D Adjustable Arms
- Black Nylon base
- Class 4 Gas lift
- Fiberglass Reinforced Poly



OPTIONAL ADD-ON FEATURES

- High Back / Non Detachable Upholstered Headrest
- Aluminum Base



Ergonomic Desk Chair



Seat Height Adjustment



Tilt Back Function



Reclining Tension Adjustment

Adjustable Lumbar Support Chair

Adjustable backrest fits perfectly around the waist



Adjustable 7 Gears



There are seven gears to adjust the height, you need to pull it up slowly with two hands.





Enjoy The Softness & Comfort

COMFORT adopts a premium molded foam, The backrest of 65kg/m³ foam offers you 360-degree perfect support while leaning back.

The seat is designed with waterfall seat cushion to minimize the pressure distribution of the



Bigger and Larger Office Chair

Heavy Duty 300 lbs.



THE COLLECTION



Executive Upholstered Seat



Executive Mesh Seat



Managerial Upholstered Seat

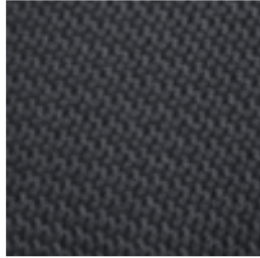


Managerial Mesh Seat

Seat

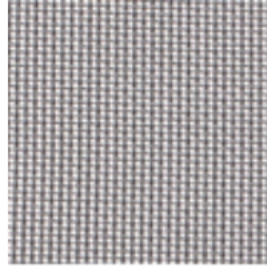


FC2202 Grey

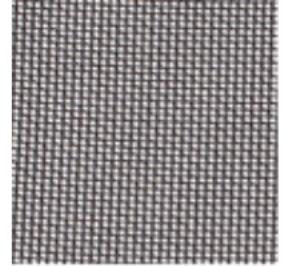


FC2201 Black

Mesh



FB2302 Grey



FB2301 Black

J-bar



Black powder coated J-bar



Aluminum polished J-bar

Base



BJ-AL350-2 Aluminum Base



BJ-N350-B Plastic Base

Dimensions (in mm)



Shipping MIDBACK

40 Foot HQ	352 Chairs
40 Foot GP	309 Chairs
20 Foot GP	148 Chairs

Packaging

84cm x 37cm x 66cm

Shipping HIGH BACK

40 Foot HQ	316 Chairs
40 Foot GP	281 Chairs
20 Foot GP	134 Chairs

Packaging

89cm x 37cm x 66cm

Weight

Net Weight: 22 Kgs.
Gross Weight: 25 Kgs.





www.axessoem.com



4641 Stag Thicket Ln.
Brunswick, Ohio 44212 (USA)
T: +1 (330) 460-4840
general@axess-int.com